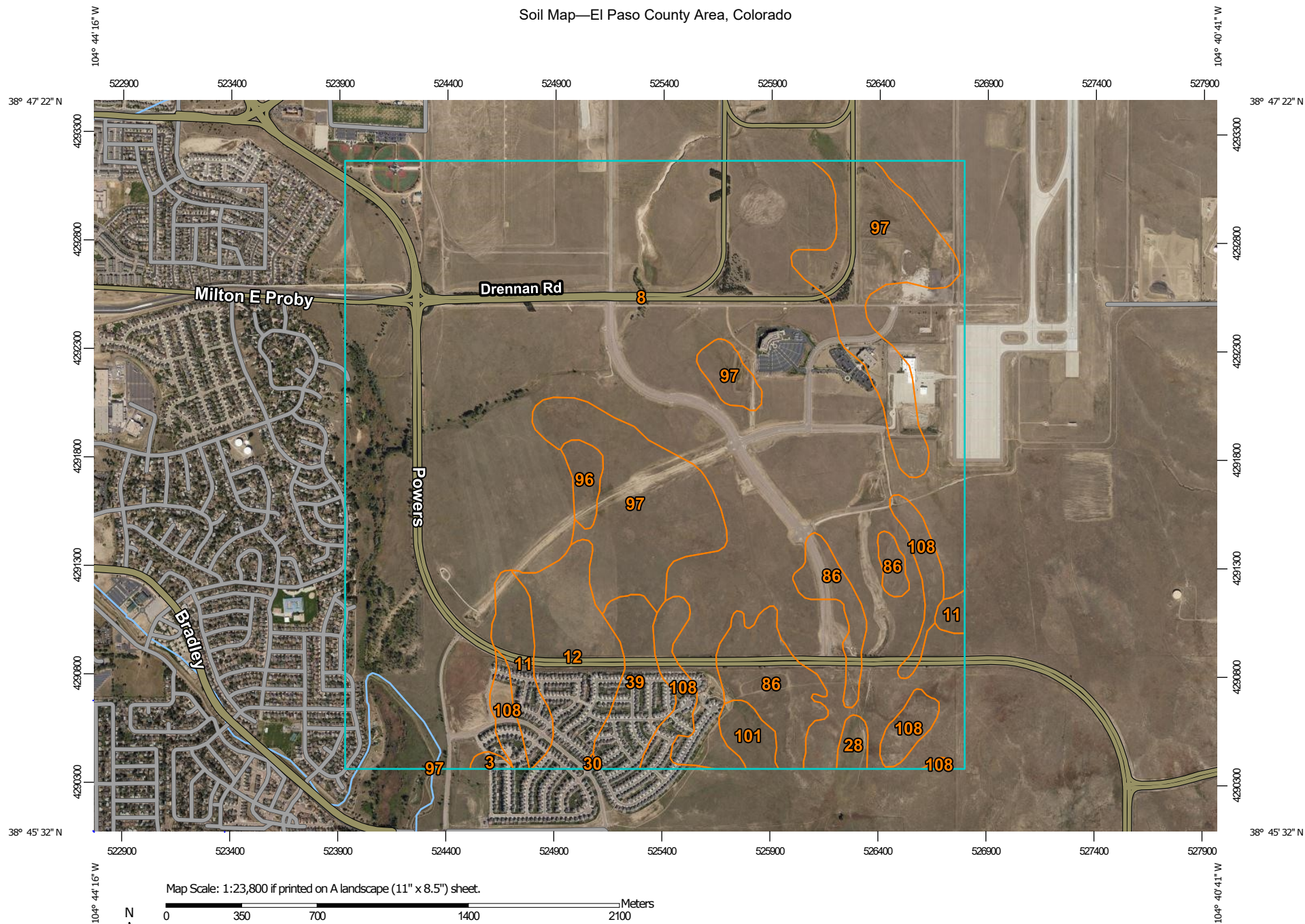


Soil Map—El Paso County Area, Colorado



**Natural Resources
Conservation Service**

Web Soil Survey
National Cooperative Soil Survey

3/1/2021
Page 1 of 3

MAP LEGEND

Area of Interest (AOI)

 Area of Interest (AOI)

Soils

 Soil Map Unit Polygons

 Soil Map Unit Lines

 Soil Map Unit Points

Special Point Features



Blowout



Borrow Pit



Clay Spot



Closed Depression



Gravel Pit



Gravelly Spot



Landfill



Lava Flow



Marsh or swamp



Mine or Quarry



Miscellaneous Water



Perennial Water



Rock Outcrop



Saline Spot



Sandy Spot



Severely Eroded Spot



Sinkhole



Slide or Slip



Sodic Spot



Spoil Area



Stony Spot



Very Stony Spot



Wet Spot



Other



Special Line Features

Water Features



Streams and Canals

Transportation



Rails



Interstate Highways



US Routes



Major Roads



Local Roads

Background



Aerial Photography

MAP INFORMATION

The soil surveys that comprise your AOI were mapped at 1:24,000.

Please rely on the bar scale on each map sheet for map measurements.

Source of Map: Natural Resources Conservation Service

Web Soil Survey URL:

Coordinate System: Web Mercator (EPSG:3857)

Maps from the Web Soil Survey are based on the Web Mercator projection, which preserves direction and shape but distorts distance and area. A projection that preserves area, such as the Albers equal-area conic projection, should be used if more accurate calculations of distance or area are required.

This product is generated from the USDA-NRCS certified data as of the version date(s) listed below.

Soil Survey Area: El Paso County Area, Colorado

Survey Area Data: Version 18, Jun 5, 2020

Soil map units are labeled (as space allows) for map scales 1:50,000 or larger.

Date(s) aerial images were photographed: Aug 19, 2018—Sep 23, 2018

The orthophoto or other base map on which the soil lines were compiled and digitized probably differs from the background imagery displayed on these maps. As a result, some minor shifting of map unit boundaries may be evident.

Map Unit Legend

Map Unit Symbol	Map Unit Name	Acres in AOI	Percent of AOI
3	Ascalon sandy loam, 3 to 9 percent slopes	2.8	0.1%
8	Blakeland loamy sand, 1 to 9 percent slopes	1,423.7	71.4%
11	Bresser sandy loam, cool, 0 to 3 percent slopes	36.5	1.8%
12	Bresser sandy loam, cool, 3 to 5 percent slopes	76.8	3.9%
28	Ellicott loamy coarse sand, 0 to 5 percent slopes	7.3	0.4%
30	Fort Collins loam, 0 to 3 percent slopes	0.6	0.0%
39	Keith silt loam, 0 to 3 percent slopes	43.2	2.2%
86	Stoneham sandy loam, 3 to 8 percent slopes	80.3	4.0%
96	Truckton sandy loam, 0 to 3 percent slopes	12.5	0.6%
97	Truckton sandy loam, 3 to 9 percent slopes	228.4	11.5%
101	Ustic Torrifluvents, loamy	14.8	0.7%
108	Wiley silt loam, 3 to 9 percent slopes	67.4	3.4%
Totals for Area of Interest		1,994.3	100.0%

RUSLE2 Related Attributes

This report summarizes those soil attributes used by the Revised Universal Soil Loss Equation Version 2 (RUSLE2) for the map units in the selected area. The report includes the map unit symbol, the component name, and the percent of the component in the map unit. Soil property data for each map unit component include the hydrologic soil group, erosion factor Kf for the surface horizon, erosion factor T, and the representative percentage of sand, silt, and clay in the mineral surface horizon. Missing surface data may indicate the presence of an organic layer.

Report—RUSLE2 Related Attributes

Soil properties and interpretations for erosion runoff calculations. The surface mineral horizon properties are displayed or the first mineral horizon below an organic surface horizon. Organic horizons are not displayed.

RUSLE2 Related Attributes—El Paso County Area, Colorado								
Map symbol and soil name	Pct. of map unit	Slope length (ft)	Hydrologic group	Kf	T factor	Representative value		
						% Sand	% Silt	% Clay
3—Ascalon sandy loam, 3 to 9 percent slopes								
Ascalon	85	151	B	.17	5	66.8	19.2	14.0
8—Blakeland loamy sand, 1 to 9 percent slopes								
Blakeland	98	—	A	.10	5	85.3	9.2	5.5
11—Bresser sandy loam, cool, 0 to 3 percent slopes								
Bresser, cool	85	200	B	.15	3	66.8	19.2	14.0
12—Bresser sandy loam, cool, 3 to 5 percent slopes								
Bresser, cool	85	180	B	.15	3	66.8	19.2	14.0
28—Ellicott loamy coarse sand, 0 to 5 percent slopes								
Ellicott	97	—	A	.17	5	84.0	11.0	5.0
30—Fort Collins loam, 0 to 3 percent slopes								
Fort Collins	98	—	B	.28	5	44.3	40.7	15.0
39—Keith silt loam, 0 to 3 percent slopes								
Keith	98	—	C	.37	5	11.3	67.7	21.0
86—Stoneham sandy loam, 3 to 8 percent slopes								
Stoneham	95	—	B	.28	5	65.9	19.1	15.0

RUSLE2 Related Attributes--El Paso County Area, Colorado								
Map symbol and soil name	Pct. of map unit	Slope length (ft)	Hydrologic group	Kf	T factor	Representative value		
						% Sand	% Silt	% Clay
96—Truckton sandy loam, 0 to 3 percent slopes								
Truckton	85	200	A	.28	5	68.0	24.0	8.0
97—Truckton sandy loam, 3 to 9 percent slopes								
Truckton	85	161	A	.28	5	68.0	24.0	8.0
101—Ustic Torrifluvents, loamy								
Ustic Torrifluvents	95	—	B	—	5	—	—	—
108—Wiley silt loam, 3 to 9 percent slopes								
Wiley	95	—	B	.43	5	11.3	67.7	21.0

Data Source Information

Soil Survey Area: El Paso County Area, Colorado
 Survey Area Data: Version 18, Jun 5, 2020