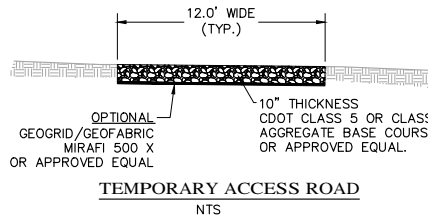
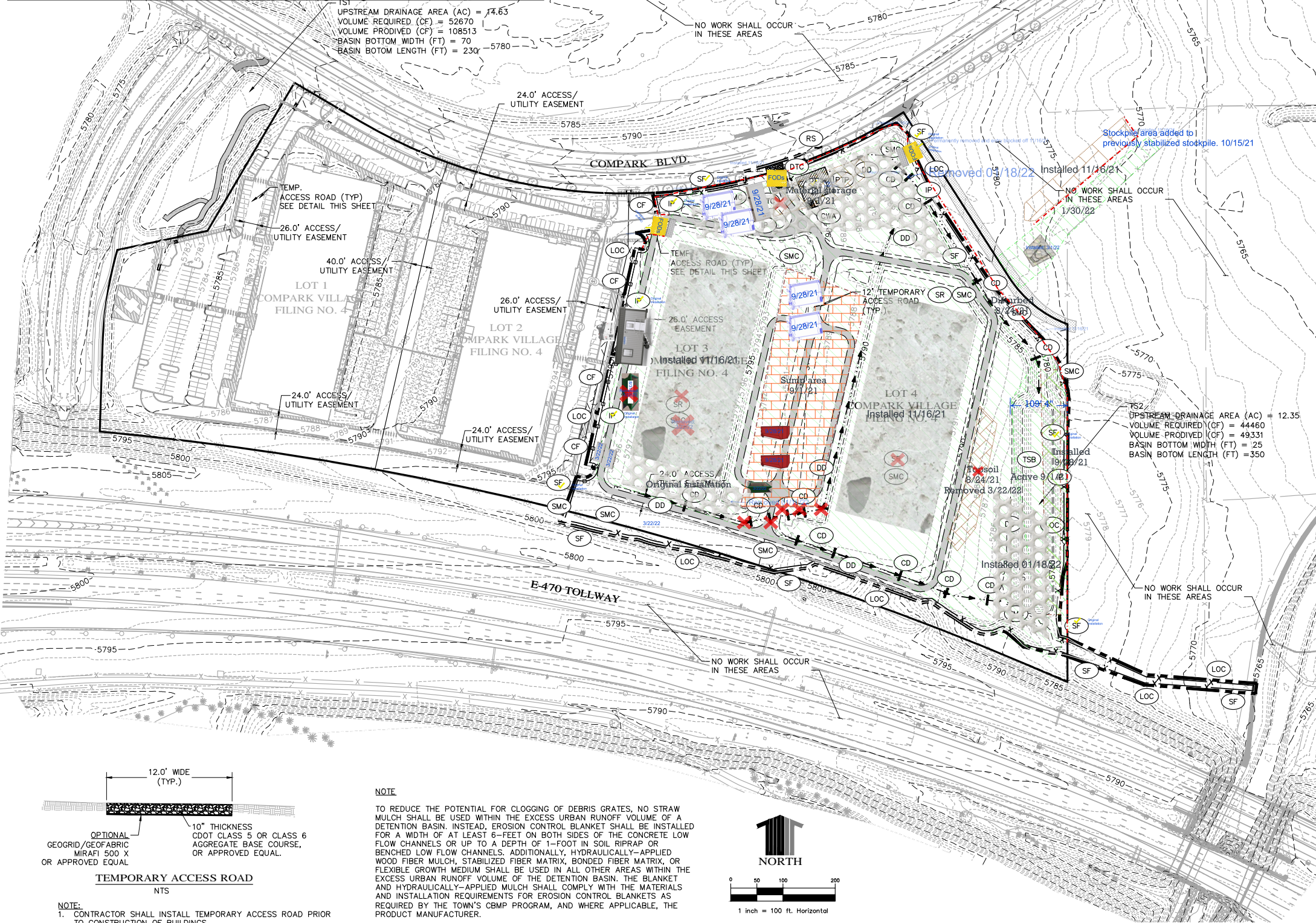


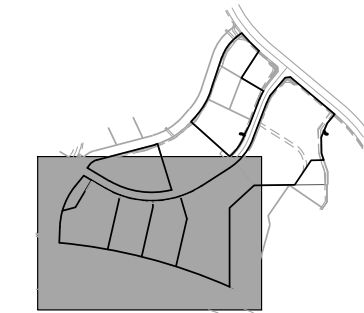
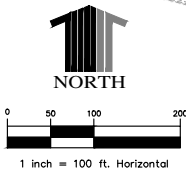
Supplemental Legend			
Active lot/area	Concrete Surface	Concrete Washout - Ecopan	Construction Office
Dumpster	Generator	Grade Differential	Materials storage
Outfall - Stabilized	Portable Toilet	Rip-Rap	Siltfence
Stockpile	Storage - conex	Surface Roughening	VTC -FODS



- NOTE:
- CONTRACTOR SHALL INSTALL TEMPORARY ACCESS ROAD PRIOR TO CONSTRUCTION OF BUILDINGS.
 - CONTRACTOR SHALL PERFORM ROUTINE MAINTENANCE TO PREVENT RUTTING AND KEEP THE TEMPORARY ROAD IN A SERVICEABLE CONDITION.
 - IF GEOGRID/GEOFABRIC IS USED, THE 10" THICK SECTION CAN BE SUBSTITUTED WITH AN 8" THICK SECTION.
 - RECYCLED ASPHALT, RECYCLED CONCRETE, OR AGGREGATE BASE, OR A COMBINATION OF THESE MATERIAL MAY BE USED WITH GEOTECHNICAL ENGINEER'S APPROVAL.

NOTE

TO REDUCE THE POTENTIAL FOR CLOGGING OF DEBRIS GRATES, NO STRAW MULCH SHALL BE USED WITHIN THE EXCESS URBAN RUNOFF VOLUME OF A DETENTION BASIN. INSTEAD, EROSION CONTROL BLANKET SHALL BE INSTALLED FOR A WIDTH OF AT LEAST 6- FEET ON BOTH SIDES OF THE CONCRETE LOW FLOW CHANNELS OR UP TO A DEPTH OF 1-FOOT IN SOIL RIPRAP OR BENCHED LOW FLOW CHANNELS. ADDITIONALLY, HYDRAULICALLY-APPLIED WOOD FIBER MULCH, STABILIZED FIBER MATRIX, BONDED FIBER MATRIX, OR FLEXIBLE GROWTH MEDIUM SHALL BE USED IN ALL OTHER AREAS WITHIN THE EXCESS URBAN RUNOFF VOLUME OF THE DETENTION BASIN. THE BLANKET AND HYDRAULICALLY-APPLIED MULCH SHALL COMPLY WITH THE MATERIALS AND INSTALLATION REQUIREMENTS FOR EROSION CONTROL BLANKETS AS REQUIRED BY THE TOWN'S CBMP PROGRAM, AND WHERE APPLICABLE, THE PRODUCT MANUFACTURER.



KEYMAP:



- CONSTRUCTION NOTES:
- WHERE CONSTRUCTION DETAILS AND SPECIFICATIONS ARE NOTED ON THESE PLANS USE THE TOWN OF PARKER STANDARD SPECIFICATIONS FOR DESIGN AND CONSTRUCTION.
 - ALL DIMENSIONS ARE TO FLOWLINE, EXCEPT PROFILES, WHICH ARE CENTERLINE DIMENSIONS, OR UNLESS OTHERWISE NOTED.
 - SEE SHEET T1.1 FOR BENCHMARK, BASIS OF BEARINGS.
 - LOT PROTECTION IS REQUIRED ON COMMERCIAL LOTS WHEN LANDSCAPING IS NOT POSSIBLE.
 - THE TRUE LOCATION OF THE PTP MAY BE DETERMINED BY THE TOWN AND ECS.

LEGEND	
CD	CHECK DAM
CP	CULVERT PROTECTION
CWA	CONCRETE WASHOUT AREA
CF	CONSTRUCTION FENCE
DD	DIVERSION DITCH
DTC	DEBRIS TRASH CONTROL (PER TOWN REQUIREMENTS)
ECB	EROSION CONTROL BLANKET
FCOS	INLET PROTECTION, CURB ON SUMP
LOC	LIMITS OF CONSTRUCTION
PTP	PORTABLE TOILET PROTECTION
RS	ROCK SOCK
SCL	SEDIMENT CONTROL LOGS
SF	SILT FENCE
SMC	SEEDING, MULCHING AND CRIMPING (PER TOWN REQUIREMENTS)
SR	SURFACE ROUGHENING
SSA	STABILIZED STAGING AREA
STP	SIDEWALK TRANSITION PROTECTION
TSB	TEMPORARY SEDIMENT BASIN
VTC	VEHICLE TRACKING CONTROL
REMOVAL	REMOVAL
FLOW ARROW	FLOW ARROW

THE TOWN OF PARKER REVIEW CONSTITUTES GENERAL COMPLIANCE WITH THE TOWN'S STANDARDS AND APPROVED VARIANCES SUBJECT TO THESE PLANS BEING STAMPED, SIGNED, AND DATED BY THE PROFESSIONAL ENGINEER OF RECORD. REVIEW BY THE TOWN DOES NOT CONSTITUTE APPROVAL OF THE PLAN DESIGN OR ACCURACY AND CORRECTNESS OF ENGINEERING CALCULATIONS. ERRORS IN THE DESIGN OR CALCULATIONS REMAIN THE RESPONSIBILITY OF THE REGISTERED PROFESSIONAL ENGINEER WHOSE STAMP AND SIGNATURE ARE AFFIXED TO THIS DOCUMENT.

THE REVIEW DOES NOT CONSTITUTE APPROVAL OF ANY PRIVATE ON-SITE IMPROVEMENTS WHICH MAY BE SHOWN. CONSTRUCTION CANNOT COMMENCE UNTIL ALL REQUIRED DRAINAGE/TRAFFIC REPORT(S), FINAL DEVELOPMENT PLAN(S), SPECIAL REVIEW(S), GRADING PERMIT, AND/OR OTHER PERMITS ARE COMPLETE, APPROVED AND ON FILE WITH THE TOWN OF PARKER.

TOWN OF PARKER, DIRECTOR OF ENGINEERING/PUBLIC WORKS DATE

powers brown architect ure

2100 Travis St., Suite 501
Houston, Texas 77002
713.224.0456
713.224.0457 fax
www.powersbrown.com

PROJECT TITLE

THE EDGE AT E470
EDGE/470
XXXXX Compark Blvd.
Parker, Colorado 80134

A PROJECT FOR
ETKIN JOHNSON REAL ESTATE PARTNERS
ETKIN JOHNSON
REAL ESTATE PARTNERS

GENERAL NOTES

Calibre
Calibre Engineering, Inc.
9090 South Ridgeline Boulevard, Suite 105
Highlands Ranch, CO 80129 (303) 730-0434
www.calibre-engineering.com
Construction Management Civil Engineering Surveying

DATE	REVISION
07/12/2019	ADDENDUM 1
Initial controls installed 8/18/21	
Disturbed areas will be specifically noted	

PROJECT NO: 184068
DRAWN BY: JAH
CHECKED BY: BKM

SHEET TITLE
INITIAL EROSION CONTROL

SEAL	SHEET NUMBER
	EC2.1

Copyright © 2018 POWERS BROWN ARCHITECTURE this drawing and the architectural work depicted therein are the sole property of Powers Brown Architecture. No portion of this drawing may be copied without the express written consent of the Architect.