

## CONSTRUCTION STORMWATER SITE INSPECTION REPORT

Facility Name	Erie Commons F4	Permittee	Community Development Group Of Erie Inc
Date of Inspection	11/03/2021	Weather Conditions	Sunny
Permit Certification #	COR413407	Approx. Temperature	52
Phase of Construction	grading and utilites	Disturbed Acreage	12.5 ac
Inspector Name	Adam Buckreis	Inspector Title	Qualified Stormwater Manager

### INSPECTION FREQUENCY - Minimum frequency for each site.

☒ At least one inspection every 7 calendar days

☐ At least one inspection every 14 calendar days

☐ Post-storm event within 24 hours from end of precipitation or snowmelt event that causes surface erosion. Event Date:

☐ Post-storm event at temporarily idle site

☐ Inspections at completed sites

☐ A deviation from the minimum inspection schedule has occurred.  
Describe if deviation occurred:

Changes made to the SWMP since the last inspection or during this inspection:  
Exact changes and permit compliance notification noted where change occurred.

☐ Map ☐ Acreage ☐ Schedule ☐ Details ☐ Documentation Added ☐ Active Areas Modified

(Per standard industry practices, the act of ordering supplies and/or scheduling the work is the first step in responding to either routine maintenance or corrective actions. Corrective actions identified in this site inspection are being actively worked on as soon as the inspection report is transmitted to the individuals on the permittee's staff or the third party responsible for resolving the item.)

After adequate corrective action(s) and maintenance have been taken, or where a report does not identify any incidents requiring corrective action or maintenance, the individual(s) designated as the Qualified Stormwater Manager, shall sign and certify the below statement:

"I verify that, to the best of my knowledge and belief, all corrective action and maintenance items identified during the inspection are complete, and the site is currently in compliance with the permit."

Peter Zana

Name of Qualified Stormwater Manager



Signature of Qualified Stormwater Manager

Qualified Stormwater Manager

Title of Qualified Stormwater Manager

11/04/2021

Date

Notes/Comments:

### SITE INSPECTION: ROUTINE OPERATIONS AND ROUTINE MAINTENANCE.

Are there new potential sources of pollutants on site, since the previous inspection, requiring routine SWMP updates or modified control measure(s)?

☐ Yes ☒ No

Are there areas of the site for which control measures to minimize potential pollutant discharges are required in addition to (or modified from) control measure(s) currently on site?

☐ Yes ☒ No

Is there evidence of, or the potential for, pollutants to potentially leave the construction site boundaries for which routine operations or maintenance can reduce potential discharges from entering the drainage system or discharging to state waters.

☐ Yes ☒ No

Areas of routine operations or maintenance that remain operating in accordance with its design and the requirements of the permit require: Additional or modified control measures to minimize potential discharge(s); maintenance to prevent a breach of the control measure; or control measures to be installed to address upcoming changes in the phase of construction.

Construction site perimeter

☒ Satisfactory ☐ Unsatisfactory

All disturbed areas (including disturbed areas subject to temporary stabilization requirements)

☒ Satisfactory ☐ Unsatisfactory

Designated haul routes, safety or other travel areas.

☒ Satisfactory ☐ Unsatisfactory

Material(s), materials storage areas (including stockpiles), waste storage areas, secondary containment, spill prevention or vehicle maintenance and fueling operations exposed to precipitation

☒ Satisfactory ☐ Unsatisfactory

Locations where stormwater has the potential to discharge offsite including Inlets, outfalls, offsite controls, and detention basins

☒ Satisfactory ☐ Unsatisfactory

Locations where vehicles exit the site / vehicle tracking control

☐ Satisfactory ☒ Unsatisfactory

Concrete washout operations, control measures and cementitious material waste

☒ Satisfactory ☐ Unsatisfactory

Trash, debris and construction waste.

☒ Satisfactory ☐ Unsatisfactory

Portable toilets appropriately located

☒ Satisfactory ☐ Unsatisfactory

Paved surfaces clear of uncontained potential pollutants (tracking or construction materials)

☒ Satisfactory ☐ Unsatisfactory

Other implemented control measures, not specifically addressed above, requiring routine maintenance. Including, but not limited to, SWMP narrative and plans and other documentation.

☒ Satisfactory ☐ Unsatisfactory



**IDENTIFICATION OF INADEQUATE CONTROL MEASURES REQUIRING CORRECTIVE ACTION**

Are there new, uncontained, potential sources of pollutants on site since the previous inspection for which control measures need to be implemented?

☐ Yes ☒ No

Is there evidence of pollutants (or potential pollutants) leaving the construction site boundaries, entering the stormwater drainage system or discharging to state waters?

☐ Yes ☒ No

Since the previous inspection have there been any instance of endangerment to health or the environment, bypass or upset conditions (including numeric effluent limit violations) requiring 24-hour notification?

☐ Yes ☒ No

Areas of the site for which new or modified control measures are required to minimize potential discharges, where control measures are not designed or implemented in accordance with the requirements of the permit or control measures are not installed/implemented to operate in accordance with its design:

Construction site perimeter

☒ Pass ☐ Action Required

All disturbed areas (including disturbed areas subject to temporary stabilization requirements)

☒ Pass ☐ Action Required

Designated haul routes, safety or travel areas.

☒ Pass ☐ Action Required

Material(s) materials storage areas (including stockpiles) and waste storage areas, secondary containment, spill prevention or vehicle maintenance and fueling operations exposed to precipitation

☒ Pass ☐ Action Required

Locations where stormwater has the potential to discharge offsite including outfalls, offsite controls, and detention basins.

☒ Pass ☐ Action Required

Locations where vehicles exit the site / vehicle tracking control

☒ Pass ☐ Action Required

Concrete washout operations and/or control measures and cementitious material waste.

☒ Pass ☐ Action Required

Trash, debris and construction waste.

☒ Pass ☐ Action Required

Portable toilets appropriately located

☒ Pass ☐ Action Required

Paved surfaces clear of uncontained potential pollutants (tracking or construction material)

☒ Pass ☐ Action Required

Other control measures, not specifically addressed above, missing, not designed or implemented in accordance with the requirements of the permit and/or not implemented to operate in accordance with its design. Including, but not limited to SWMP narrative and plans and other documentation

☒ Pass ☐ Action Required

**CONTROL MEASURES REQUIRING ROUTINE MAINTENANCE**

Definition: Any control measure that is still operating in accordance with its design and the requirements of the permit, but requires maintenance to prevent a breach of the control measure. These items are not subject to the corrective action requirements as specified in Part I.B.1.c of the permit.

Date Observed	Location	Control Measure	Maintenance Required / Action Taken	Date Completed / Initials
11/03/2021	ITEM 1	Tracking Control FODS	Clean.	11/04/2021 P.Z.

**INADEQUATE CONTROL MEASURES REQUIRING CORRECTIVE ACTION**

Definition: Any control measure that is not designed or implemented in accordance with the requirements of the permit and/or any control measure that is not implemented to operate in accordance with its design. This includes control measures that have not been implemented for pollutant sources. If it is infeasible to install or repair the control measure immediately after discovering the deficiency the reason must be documented and a schedule included to return the control measure to effective operating condition as possible.

Date Discovered	Location	Description of Inadequate Control Measure	Description of Corrective Action If deficiency not corrected immediately, reason and schedule to correct	Date Completed / Initials
-----------------	----------	---	--	---------------------------





## Inspection Maps

### Inspection

Site Name: Erie Commons

Customer: Community Development Group  
Of Erie Inc

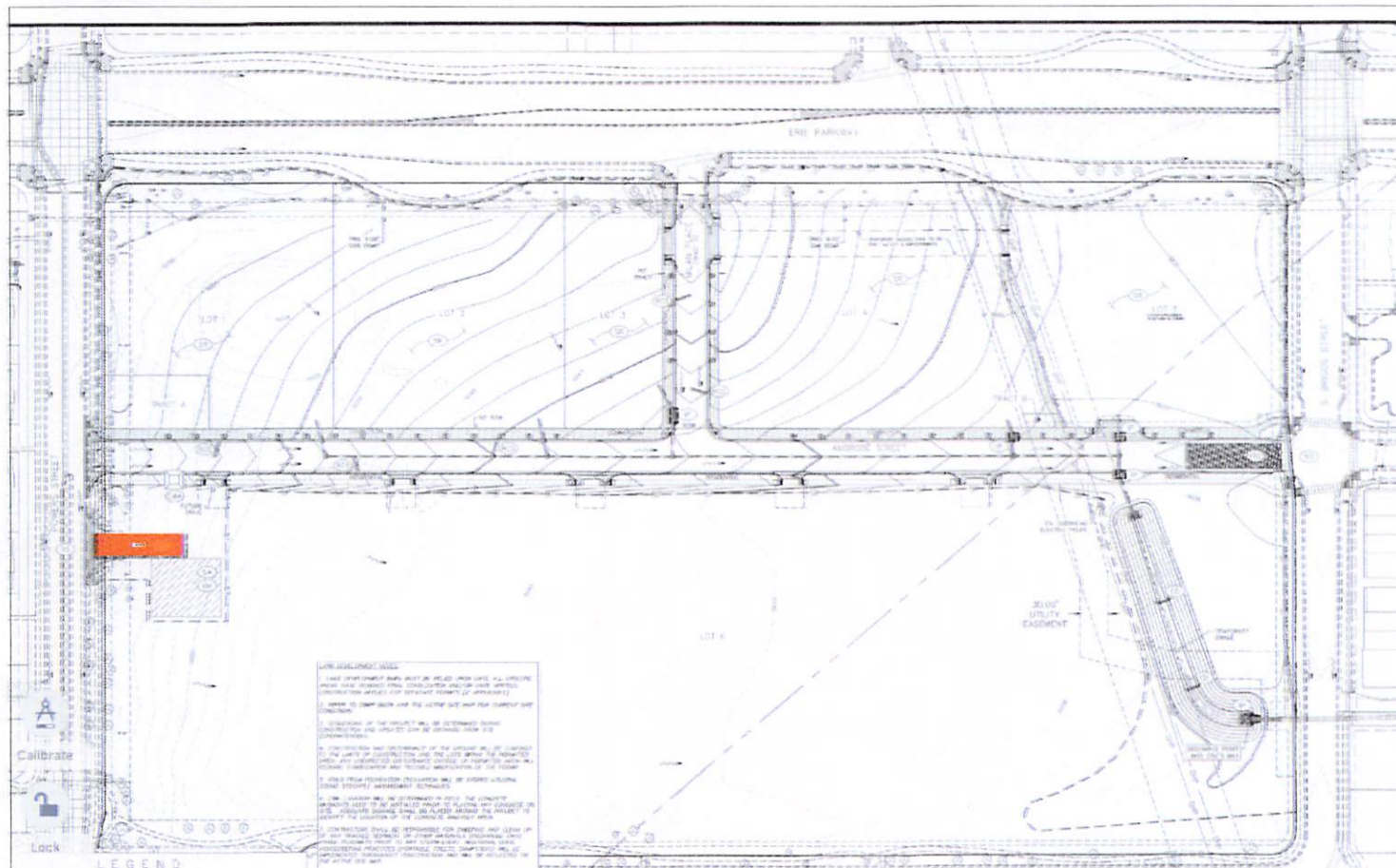
Permit Number: COR413407

Inspection Type: Routine Weekly

Permit Description: Erie Commons F4

Inspector: Adam Buckreis - Qualified  
Stormwater Manager  
Adam@earthx.us

Inspection Date: 11/03/2021 12:15PM



Color	Title	BMP	Link	Comments	Dates	Permanent
	Item 1	Tracking Control FODS	9 - Locations where vehicles exit the site / vehicle tracking control			False

## CONSTRUCTION STORMWATER SITE INSPECTION REPORT

Facility Name	Erie Commons F4	Permittee	Community Development Group Of Erie Inc
Date of Inspection	11/10/2021	Weather Conditions	Sunny
Permit Certification #	COR413407	Approx. Temperature	58
Phase of Construction	grading and utilites	Disturbed Acreage	12.5 ac
Inspector Name	Adam Buckreis	Inspector Title	Qualified Stormwater Manager

### INSPECTION FREQUENCY - Minimum frequency for each site.

☒ At least one inspection every 7 calendar days

☐ At least one inspection every 14 calendar days

☐ Post-storm event within 24 hours from end of precipitation or snowmelt event that causes surface erosion. Event Date:

☐ Post-storm event at temporarily idle site

☐ Inspections at completed sites

☐ A deviation from the minimum inspection schedule has occurred.  
Describe if deviation occurred:

Changes made to the SWMP since the last inspection or during this inspection:

Exact changes and permit compliance notification noted where change occurred.

☒ Map ☐ Acreage ☐ Schedule ☐ Details ☐ Documentation Added ☐ Active Areas Modified

(Per standard industry practices, the act of ordering supplies and/or scheduling the work is the first step in responding to either routine maintenance or corrective actions. Corrective actions identified in this site inspection are being actively worked on as soon as the inspection report is transmitted to the individuals on the permittee's staff or the third party responsible for resolving the item.)

After adequate corrective action(s) and maintenance have been taken, or where a report does not identify any incidents requiring corrective action or maintenance, the individual(s) designated as the Qualified Stormwater Manager, shall sign and certify the below statement:

"I verify that, to the best of my knowledge and belief, all corrective action and maintenance items identified during the inspection are complete, and the site is currently in compliance with the permit."

Peter Zana

Name of Qualified Stormwater Manager



Signature of Qualified Stormwater Manager

Qualified Stormwater Manager

Title of Qualified Stormwater Manager

11/15/2021

Date

Notes/Comments:



**SITE INSPECTION: ROUTINE OPERATIONS AND ROUTINE MAINTAINENCE.**

Are there new potential sources of pollutants on site, since the previous inspection, requiring routine SWMP updates or modified control measure(s)?

☐ Yes ☒ No

Are there areas of the site for which control measures to minimize potential pollutant discharges are required in addition to (or modified from) control measure(s) currently on site?

☐ Yes ☒ No

Is there evidence of, or the potential for, pollutants to potentially leave the construction site boundaries for which routine operations or maintenance can reduce potential discharges from entering the drainage system or discharging to state waters.

☐ Yes ☒ No

Areas of routine operations or maintenance that remain operating in accordance with its design and the requirements of the permit require: Additional or modified control measures to minimize potential discharge(s); maintenance to prevent a breach of the control measure; or control measures to be installed to address upcoming changes in the phase of construction.

Construction site perimeter

☒ Satisfactory ☐ Unsatisfactory

All disturbed areas (including disturbed areas subject to temporary stabilization requirements)

☒ Satisfactory ☐ Unsatisfactory

Designated haul routes, safety or other travel areas.

☒ Satisfactory ☐ Unsatisfactory

Material(s), materials storage areas (including stockpiles), waste storage areas, secondary containment, spill prevention or vehicle maintenance and fueling operations exposed to precipitation

☒ Satisfactory ☐ Unsatisfactory

Locations where stormwater has the potential to discharge offsite including Inlets, outfalls, offsite controls, and detention basins

☐ Satisfactory ☒ Unsatisfactory

Locations where vehicles exit the site / vehicle tracking control

☒ Satisfactory ☐ Unsatisfactory

Concrete washout operations, control measures and cementitious material waste

☒ Satisfactory ☐ Unsatisfactory

Trash, debris and construction waste.

☒ Satisfactory ☐ Unsatisfactory

Portable toilets appropriately located

☒ Satisfactory ☐ Unsatisfactory

Paved surfaces clear of uncontained potential pollutants (tracking or construction materials)

☒ Satisfactory ☐ Unsatisfactory

Other implemented control measures, not specifically addressed above, requiring routine maintenance. Including, but not limited to, SWMP narrative and plans and other documentation.

☒ Satisfactory ☐ Unsatisfactory

**IDENTIFICATION OF INADEQUATE CONTROL MEASURES REQUIRING CORRECTIVE ACTION**

Are there new, uncontained, potential sources of pollutants on site since the previous inspection for which control measures need to be implemented?

☐ Yes ☒ No

Is there evidence of pollutants (or potential pollutants) leaving the construction site boundaries, entering the stormwater drainage system or discharging to state waters?

☐ Yes ☒ No

Since the previous inspection have there been any instance of endangerment to health or the environment, bypass or upset conditions (including numeric effluent limit violations) requiring 24-hour notification?

☐ Yes ☒ No

Areas of the site for which new or modified control measures are required to minimize potential discharges, where control measures are not designed or implemented in accordance with the requirements of the permit or control measures are not installed/implemented to operate in accordance with its design:

Construction site perimeter

☒ Pass ☐ Action Required

All disturbed areas (including disturbed areas subject to temporary stabilization requirements)

☒ Pass ☐ Action Required

Designated haul routes, safety or travel areas.

☒ Pass ☐ Action Required

Material(s) materials storage areas (including stockpiles) and waste storage areas, secondary containment, spill prevention or vehicle maintenance and fueling operations exposed to precipitation

☒ Pass ☐ Action Required

Locations where stormwater has the potential to discharge offsite including outfalls, offsite controls, and detention basins.

☒ Pass ☐ Action Required

Locations where vehicles exit the site / vehicle tracking control

☒ Pass ☐ Action Required

Concrete washout operations and/or control measures and cementitious material waste.

☒ Pass ☐ Action Required

Trash, debris and construction waste.

☒ Pass ☐ Action Required

Portable toilets appropriately located

☒ Pass ☐ Action Required

Paved surfaces clear of uncontained potential pollutants (tracking or construction material)

☒ Pass ☐ Action Required

Other control measures, not specifically addressed above, missing, not designed or implemented in accordance with the requirements of the permit and/or not implemented to operate in accordance with its design. Including, but not limited to SWMP narrative and plans and other documentation

☒ Pass ☐ Action Required

**CONTROL MEASURES REQUIRING ROUTINE MAINTENANCE**

Definition: Any control measure that is still operating in accordance with its design and the requirements of the permit, but requires maintenance to prevent a breach of the control measure. These items are not subject to the corrective action requirements as specified in Part I.B.1.c of the permit.

Date Observed	Location	Control Measure	Maintenance Required / Action Taken	Date Completed / Initials
11/10/2021	ITEM 1	Silt Fence	Repair. (replace broken stakes, restaple fabric to posts, replace if needed & etc.).	11/11/2021 P.Z.
11/10/2021	ITEM 2	Silt Fence	Repair. (replace broken stakes, restaple fabric to posts, replace if needed & etc.).	11/11/2021 P.Z.

**INADEQUATE CONTROL MEASURES REQUIRING CORRECTIVE ACTION**

Definition: Any control measure that is not designed or implemented in accordance with the requirements of the permit and/or any control measure that is not implemented to operate in accordance with its design. This includes control measures that have not been implemented for pollutant sources. If it is infeasible to install or repair the control measure immediately after discovering the deficiency the reason must be documented and a schedule included to return the control measure to effective operating condition as possible.

Date Discovered	Location	Description of Inadequate Control Measure	Description of Corrective Action If deficiency not corrected immediately, reason and schedule to correct	Date Completed / Initials
-----------------	----------	---	--	---------------------------





## Inspection Maps

### Inspection

Site Name: Erie Commons

Customer: Community Development Group  
Of Erie Inc

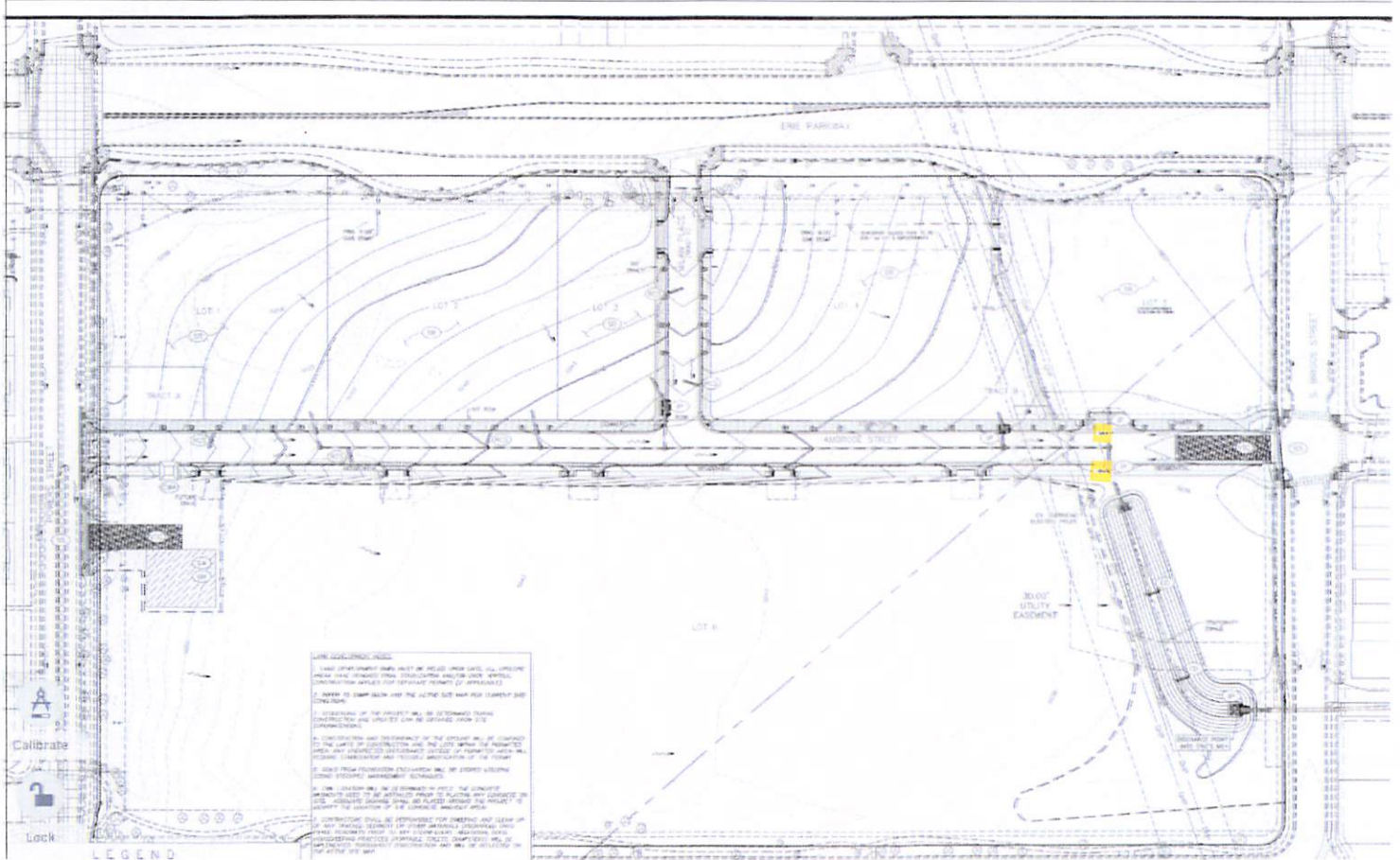
Permit Number: COR413407

Inspection Type: Routine Weekly

Permit Description: Erie Commons F4

Inspector: Adam Buckreis - Qualified  
Stormwater Manager  
Adam@earthx.us

Inspection Date: 11/10/2021 11:49AM



Color	Title	BMP	Link	Comments	Dates	Permanent
	Item 1	Silt Fence	8 - Locations where stormwater has the potential to discharge offsite including Inlets, outfalls, offsite controls, and detention basins			False

## Inspection Maps

	Item 2	Silt Fence	8 - Locations where stormwater has the potential to discharge offsite including Inlets, outfalls, offsite controls, and detention basins			False
--	--------	------------	--	--	--	-------



## CONSTRUCTION STORMWATER SITE INSPECTION REPORT

Facility Name	Erie Commons F4	Permittee	Community Development Group Of Erie Inc
Date of Inspection	11/17/2021	Weather Conditions	Sunny
Permit Certification #	COR413407	Approx. Temperature	37
Phase of Construction	grading and utilites	Disturbed Acreage	12.5 ac
Inspector Name	Adam Buckreis	Inspector Title	Qualified Stormwater Manager

### INSPECTION FREQUENCY - Minimum frequency for each site.

- ☒ At least one inspection every 7 calendar days
- ☐ At least one inspection every 14 calendar days
- ☐ Post-storm event within 24 hours from end of precipitation or snowmelt event that causes surface erosion. Event Date:
- ☐ Post-storm event at temporarily idle site

☐ Inspections at completed sites

☐ A deviation from the minimum inspection schedule has occurred.  
Describe if deviation occurred:

Changes made to the SWMP since the last inspection or during this inspection:

Exact changes and permit compliance notification noted where change occurred.

☐ Map ☐ Acreage ☐ Schedule ☐ Details ☐ Documentation Added ☐ Active Areas Modified

(Per standard industry practices, the act of ordering supplies and/or scheduling the work is the first step in responding to either routine maintenance or corrective actions. Corrective actions identified in this site inspection are being actively worked on as soon as the inspection report is transmitted to the individuals on the permittee's staff or the third party responsible for resolving the item.)

After adequate corrective action(s) and maintenance have been taken, or where a report does not identify any incidents requiring corrective action or maintenance, the individual(s) designated as the Qualified Stormwater Manager, shall sign and certify the below statement:

"I verify that, to the best of my knowledge and belief, all corrective action and maintenance items identified during the inspection are complete, and the site is currently in compliance with the permit."

Wade Duncan

Name of Qualified Stormwater Manager



Signature of Qualified Stormwater Manager

Project Manager

Title of Qualified Stormwater Manager

11/17/2021

Date

Notes/Comments:

**SITE INSPECTION: ROUTINE OPERATIONS AND ROUTINE MAINTAINENCE.**

Are there new potential sources of pollutants on site, since the previous inspection, requiring routine SWMP updates or modified control measure(s)?

☐ Yes ☒ No

Are there areas of the site for which control measures to minimize potential pollutant discharges are required in addition to (or modified from) control measure(s) currently on site?

☐ Yes ☒ No

Is there evidence of, or the potential for, pollutants to potentially leave the construction site boundaries for which routine operations or maintenance can reduce potential discharges from entering the drainage system or discharging to state waters.

☐ Yes ☒ No

Areas of routine operations or maintenance that remain operating in accordance with its design and the requirements of the permit require: Additional or modified control measures to minimize potential discharge(s); maintenance to prevent a breach of the control measure; or control measures to be installed to address upcoming changes in the phase of construction.

Construction site perimeter

☒ Satisfactory ☐ Unsatisfactory

All disturbed areas (including disturbed areas subject to temporary stabilization requirements)

☒ Satisfactory ☐ Unsatisfactory

Designated haul routes, safety or other travel areas.

☒ Satisfactory ☐ Unsatisfactory

Material(s), materials storage areas (including stockpiles), waste storage areas, secondary containment, spill prevention or vehicle maintenance and fueling operations exposed to precipitation

☒ Satisfactory ☐ Unsatisfactory

Locations where stormwater has the potential to discharge offsite including Inlets, outfalls, offsite controls, and detention basins

☒ Satisfactory ☐ Unsatisfactory

Locations where vehicles exit the site / vehicle tracking control

☒ Satisfactory ☐ Unsatisfactory

Concrete washout operations, control measures and cementitious material waste

☒ Satisfactory ☐ Unsatisfactory

Trash, debris and construction waste.

☒ Satisfactory ☐ Unsatisfactory

Portable toilets appropriately located

☒ Satisfactory ☐ Unsatisfactory

Paved surfaces clear of uncontained potential pollutants (tracking or construction materials)

☒ Satisfactory ☐ Unsatisfactory

Other implemented control measures, not specifically addressed above, requiring routine maintenance. Including, but not limited to, SWMP narrative and plans and other documentation.

☒ Satisfactory ☐ Unsatisfactory



**IDENTIFICATION OF INADEQUATE CONTROL MEASURES REQUIRING CORRECTIVE ACTION**

Are there new, uncontained, potential sources of pollutants on site since the previous inspection for which control measures need to be implemented?

☐ Yes ☒ No

Is there evidence of pollutants (or potential pollutants) leaving the construction site boundaries, entering the stormwater drainage system or discharging to state waters?

☐ Yes ☒ No

Since the previous inspection have there been any instance of endangerment to health or the environment, bypass or upset conditions (including numeric effluent limit violations) requiring 24-hour notification?

☐ Yes ☒ No

Areas of the site for which new or modified control measures are required to minimize potential discharges, where control measures are not designed or implemented in accordance with the requirements of the permit or control measures are not installed/implemented to operate in accordance with its design:

Construction site perimeter

☒ Pass ☐ Action Required

All disturbed areas (including disturbed areas subject to temporary stabilization requirements)

☒ Pass ☐ Action Required

Designated haul routes, safety or travel areas.

☒ Pass ☐ Action Required

Material(s) materials storage areas (including stockpiles) and waste storage areas, secondary containment, spill prevention or vehicle maintenance and fueling operations exposed to precipitation

☒ Pass ☐ Action Required

Locations where stormwater has the potential to discharge offsite including outfalls, offsite controls, and detention basins.

☒ Pass ☐ Action Required

Locations where vehicles exit the site / vehicle tracking control

☒ Pass ☐ Action Required

Concrete washout operations and/or control measures and cementitious material waste.

☒ Pass ☐ Action Required

Trash, debris and construction waste.

☒ Pass ☐ Action Required

Portable toilets appropriately located

☒ Pass ☐ Action Required

Paved surfaces clear of uncontained potential pollutants (tracking or construction material)

☒ Pass ☐ Action Required

Other control measures, not specifically addressed above, missing, not designed or implemented in accordance with the requirements of the permit and/or not implemented to operate in accordance with its design. Including, but not limited to SWMP narrative and plans and other documentation

☒ Pass ☐ Action Required



**CONTROL MEASURES REQUIRING ROUTINE MAINTENANCE**

Definition: Any control measure that is still operating in accordance with its design and the requirements of the permit, but requires maintenance to prevent a breach of the control measure. These items are not subject to the corrective action requirements as specified in Part I.B.1.c of the permit.

Date Observed	Location	Control Measure	Maintenance Required / Action Taken	Date Completed / Initials
---------------	----------	-----------------	--	------------------------------

**INADEQUATE CONTROL MEASURES REQUIRING CORRECTIVE ACTION**

Definition: Any control measure that is not designed or implemented in accordance with the requirements of the permit and/or any control measure that is not implemented to operate in accordance with its design. This includes control measures that have not been implemented for pollutant sources. If it is infeasible to install or repair the control measure immediately after discovering the deficiency the reason must be documented and a schedule included to return the control measure to effective operating condition as possible.

Date Discovered	Location	Description of Inadequate Control Measure	Description of Corrective Action If deficiency not corrected immediately, reason and schedule to correct	Date Completed / Initials
-----------------	----------	---	--	------------------------------

## CONSTRUCTION STORMWATER SITE INSPECTION REPORT

Facility Name	Erie Commons F4	Permittee	Community Development Group Of Erie Inc
Date of Inspection	11/24/2021	Weather Conditions	Overcast
Permit Certification #	COR413407	Approx. Temperature	42
Phase of Construction	grading and utilites	Disturbed Acreage	12.5 ac
Inspector Name	Adam Buckreis	Inspector Title	Qualified Stormwater Manager

### INSPECTION FREQUENCY - Minimum frequency for each site.

☒ At least one inspection every 7 calendar days

☐ At least one inspection every 14 calendar days

☐ Post-storm event within 24 hours from end of precipitation or snowmelt event that causes surface erosion. Event Date:

☐ Post-storm event at temporarily idle site

☐ Inspections at completed sites

☐ A deviation from the minimum inspection schedule has occurred.  
Describe if deviation occurred:

Changes made to the SWMP since the last inspection or during this inspection:  
Exact changes and permit compliance notification noted where change occurred.

☐ Map   ☐ Acreage   ☐ Schedule   ☐ Details   ☐ Documentation Added   ☐ Active Areas Modified

(Per standard industry practices, the act of ordering supplies and/or scheduling the work is the first step in responding to either routine maintenance or corrective actions. Corrective actions identified in this site inspection are being actively worked on as soon as the inspection report is transmitted to the individuals on the permittee's staff or the third party responsible for resolving the item.)

After adequate corrective action(s) and maintenance have been taken, or where a report does not identify any incidents requiring corrective action or maintenance, the individual(s) designated as the Qualified Stormwater Manager, shall sign and certify the below statement:

"I verify that, to the best of my knowledge and belief, all corrective action and maintenance items identified during the inspection are complete, and the site is currently in compliance with the permit."

Peter Zana

Name of Qualified Stormwater Manager



Signature of Qualified Stormwater Manager

Qualified Stormwater Manager

Title of Qualified Stormwater Manager

12/01/2021

Date

Notes/Comments:

**SITE INSPECTION: ROUTINE OPERATIONS AND ROUTINE MAINTAINENCE.**

Are there new potential sources of pollutants on site, since the previous inspection, requiring routine SWMP updates or modified control measure(s)?

☐ Yes ☒ No

Are there areas of the site for which control measures to minimize potential pollutant discharges are required in addition to (or modified from) control measure(s) currently on site?

☐ Yes ☒ No

Is there evidence of, or the potential for, pollutants to potentially leave the construction site boundaries for which routine operations or maintenance can reduce potential discharges from entering the drainage system or discharging to state waters.

☐ Yes ☒ No

Areas of routine operations or maintenance that remain operating in accordance with its design and the requirements of the permit require: Additional or modified control measures to minimize potential discharge(s); maintenance to prevent a breach of the control measure; or control measures to be installed to address upcoming changes in the phase of construction.

Construction site perimeter

☒ Satisfactory ☐ Unsatisfactory

All disturbed areas (including disturbed areas subject to temporary stabilization requirements)

☒ Satisfactory ☐ Unsatisfactory

Designated haul routes, safety or other travel areas.

☒ Satisfactory ☐ Unsatisfactory

Material(s), materials storage areas (including stockpiles), waste storage areas, secondary containment, spill prevention or vehicle maintenance and fueling operations exposed to precipitation

☒ Satisfactory ☐ Unsatisfactory

Locations where stormwater has the potential to discharge offsite including Inlets, outfalls, offsite controls, and detention basins

☐ Satisfactory ☒ Unsatisfactory

Locations where vehicles exit the site / vehicle tracking control

☒ Satisfactory ☐ Unsatisfactory

Concrete washout operations, control measures and cementitious material waste

☒ Satisfactory ☐ Unsatisfactory

Trash, debris and construction waste.

☒ Satisfactory ☐ Unsatisfactory

Portable toilets appropriately located

☒ Satisfactory ☐ Unsatisfactory

Paved surfaces clear of uncontained potential pollutants (tracking or construction materials)

☒ Satisfactory ☐ Unsatisfactory

Other implemented control measures, not specifically addressed above, requiring routine maintenance. Including, but not limited to, SWMP narrative and plans and other documentation.

☒ Satisfactory ☐ Unsatisfactory



**IDENTIFICATION OF INADEQUATE CONTROL MEASURES REQUIRING CORRECTIVE ACTION**

Are there new, uncontained, potential sources of pollutants on site since the previous inspection for which control measures need to be implemented?

☐ Yes ☒ No

Is there evidence of pollutants (or potential pollutants) leaving the construction site boundaries, entering the stormwater drainage system or discharging to state waters?

☐ Yes ☒ No

Since the previous inspection have there been any instance of endangerment to health or the environment, bypass or upset conditions (including numeric effluent limit violations) requiring 24-hour notification?

☐ Yes ☒ No

Areas of the site for which new or modified control measures are required to minimize potential discharges, where control measures are not designed or implemented in accordance with the requirements of the permit or control measures are not installed/implemented to operate in accordance with its design:

Construction site perimeter

☒ Pass ☐ Action Required

All disturbed areas (including disturbed areas subject to temporary stabilization requirements)

☒ Pass ☐ Action Required

Designated haul routes, safety or travel areas.

☒ Pass ☐ Action Required

Material(s) materials storage areas (including stockpiles) and waste storage areas, secondary containment, spill prevention or vehicle maintenance and fueling operations exposed to precipitation

☒ Pass ☐ Action Required

Locations where stormwater has the potential to discharge offsite including outfalls, offsite controls, and detention basins.

☒ Pass ☐ Action Required

Locations where vehicles exit the site / vehicle tracking control

☒ Pass ☐ Action Required

Concrete washout operations and/or control measures and cementitious material waste.

☒ Pass ☐ Action Required

Trash, debris and construction waste.

☒ Pass ☐ Action Required

Portable toilets appropriately located

☒ Pass ☐ Action Required

Paved surfaces clear of uncontained potential pollutants (tracking or construction material)

☒ Pass ☐ Action Required

Other control measures, not specifically addressed above, missing, not designed or implemented in accordance with the requirements of the permit and/or not implemented to operate in accordance with its design. Including, but not limited to SWMP narrative and plans and other documentation

☒ Pass ☐ Action Required

**CONTROL MEASURES REQUIRING ROUTINE MAINTENANCE**

Definition: Any control measure that is still operating in accordance with its design and the requirements of the permit, but requires maintenance to prevent a breach of the control measure. These items are not subject to the corrective action requirements as specified in Part I.B.1.c of the permit.

Date Observed	Location	Control Measure	Maintenance Required / Action Taken	Date Completed / Initials
11/24/2021	ITEM 2	Silt Fence	Repair. (replace broken stakes, restaple fabric to posts, replace if needed & etc.).	12/01/2021 P.Z.
11/24/2021	ITEM 1	Silt Fence	Repair. (replace broken stakes, restaple fabric to posts, replace if needed & etc.).	12/01/2021 P.Z.
11/24/2021	ITEM 3	Silt Fence	Repair. (replace broken stakes, restaple fabric to posts, replace if needed & etc.).	12/01/2021 P.Z.

**INADEQUATE CONTROL MEASURES REQUIRING CORRECTIVE ACTION**

Definition: Any control measure that is not designed or implemented in accordance with the requirements of the permit and/or any control measure that is not implemented to operate in accordance with its design. This includes control measures that have not been implemented for pollutant sources. If it is infeasible to install or repair the control measure immediately after discovering the deficiency the reason must be documented and a schedule included to return the control measure to effective operating condition as possible.

Date Discovered	Location	Description of Inadequate Control Measure	Description of Corrective Action If deficiency not corrected immediately, reason and schedule to correct	Date Completed / Initials
-----------------	----------	---	--	---------------------------



## Inspection Maps

### Inspection

Site Name: Erie Commons

Customer: Community Development Group  
Of Erie Inc

Permit Number: COR413407

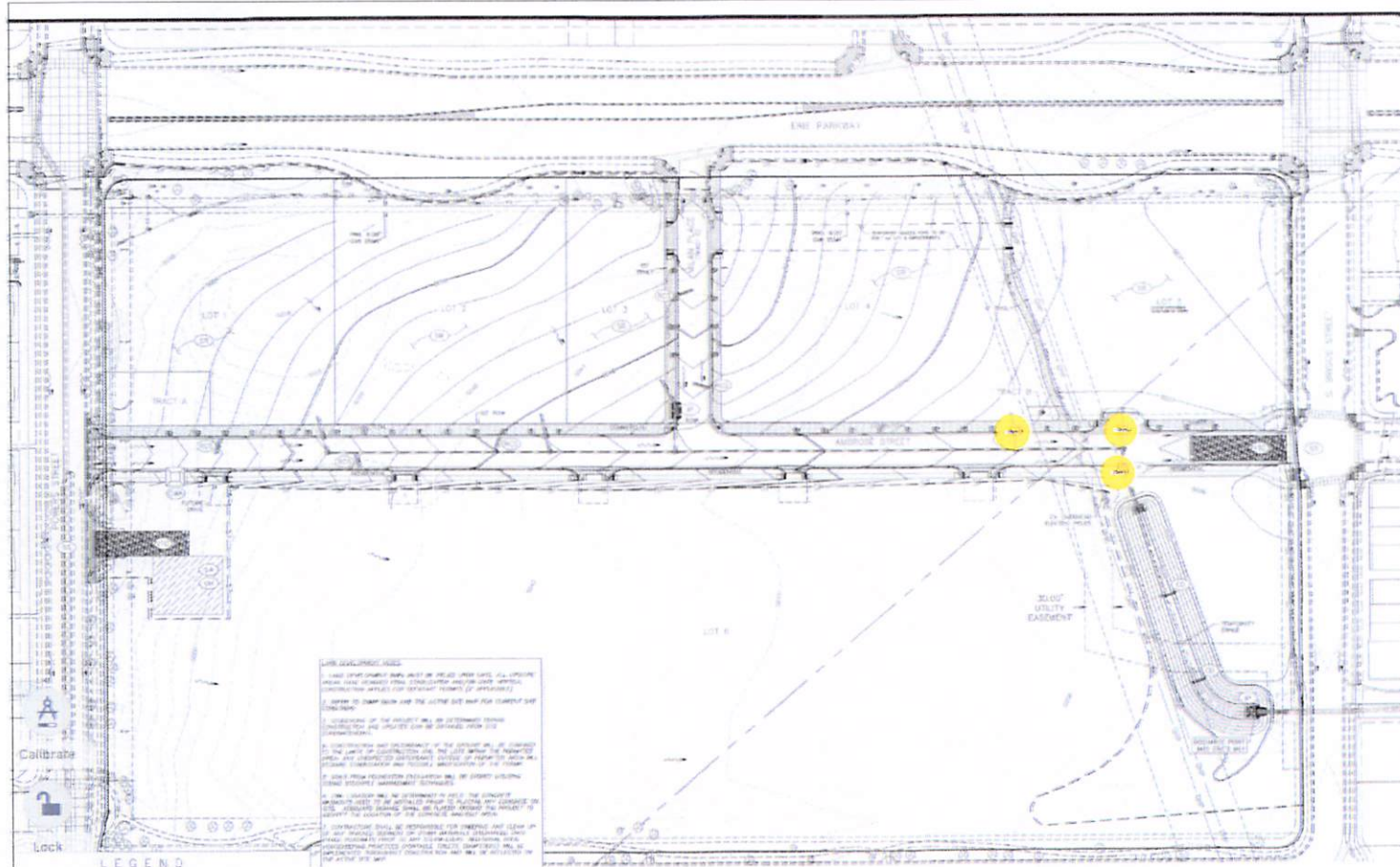
Inspection Type: Routine Weekly

Permit Description: Erie Commons F4

Inspector: Adam Buckreis - Qualified  
Stormwater Manager  
Adam@earthx.us

Inspection Date: 11/24/2021 11:01AM





Color	Title	BMP	Link	Comments	Dates	Permanent
	Item 1	Silt Fence	8 - Locations where stormwater has the potential to discharge offsite including Inlets, outfalls, offsite controls, and detention basins			True

## Inspection Maps

	Item 2	Silt Fence	8 - Locations where stormwater has the potential to discharge offsite including Inlets, outfalls, offsite controls, and detention basins			True
	Item 3	Silt Fence	8 - Locations where stormwater has the potential to discharge offsite including Inlets, outfalls, offsite controls, and detention basins			True

## CONSTRUCTION STORMWATER SITE INSPECTION REPORT

Facility Name	Erie Commons F4	Permittee	Community Development Group Of Erie Inc
Date of Inspection	12/01/2021	Weather Conditions	Sunny
Permit Certification #	COR413407	Approx. Temperature	61
Phase of Construction	grading and utilites	Disturbed Acreage	12.5 ac
Inspector Name	Adam Buckreis	Inspector Title	Qualified Stormwater Manager

### INSPECTION FREQUENCY - Minimum frequency for each site.

- ☒ At least one inspection every 7 calendar days
- ☐ At least one inspection every 14 calendar days
- ☐ Post-storm event within 24 hours from end of precipitation or snowmelt event that causes surface erosion. Event Date:
- ☐ Post-storm event at temporarily idle site

☐ Inspections at completed sites

☐ A deviation from the minimum inspection schedule has occurred.  
Describe if deviation occurred:

Changes made to the SWMP since the last inspection or during this inspection:

Exact changes and permit compliance notification noted where change occurred.

☐ Map ☐ Acreage ☐ Schedule ☐ Details ☐ Documentation Added ☐ Active Areas Modified

(Per standard industry practices, the act of ordering supplies and/or scheduling the work is the first step in responding to either routine maintenance or corrective actions. Corrective actions identified in this site inspection are being actively worked on as soon as the inspection report is transmitted to the individuals on the permittee's staff or the third party responsible for resolving the item.)

After adequate corrective action(s) and maintenance have been taken, or where a report does not identify any incidents requiring corrective action or maintenance, the individual(s) designated as the Qualified Stormwater Manager, shall sign and certify the below statement:

"I verify that, to the best of my knowledge and belief, all corrective action and maintenance items identified during the inspection are complete, and the site is currently in compliance with the permit."

Peter Zana

Name of Qualified Stormwater Manager



Signature of Qualified Stormwater Manager

Qualified Stormwater Manager

Title of Qualified Stormwater Manager

12/01/2021

Date

Notes/Comments:



**SITE INSPECTION: ROUTINE OPERATIONS AND ROUTINE MAINTAINENCE.**

Are there new potential sources of pollutants on site, since the previous inspection, requiring routine SWMP updates or modified control measure(s)?

☐ Yes ☒ No

Are there areas of the site for which control measures to minimize potential pollutant discharges are required in addition to (or modified from) control measure(s) currently on site?

☐ Yes ☒ No

Is there evidence of, or the potential for, pollutants to potentially leave the construction site boundaries for which routine operations or maintenance can reduce potential discharges from entering the drainage system or discharging to state waters.

☐ Yes ☒ No

Areas of routine operations or maintenance that remain operating in accordance with its design and the requirements of the permit require: Additional or modified control measures to minimize potential discharge(s); maintenance to prevent a breach of the control measure; or control measures to be installed to address upcoming changes in the phase of construction.

Construction site perimeter

☒ Satisfactory ☐ Unsatisfactory

All disturbed areas (including disturbed areas subject to temporary stabilization requirements)

☒ Satisfactory ☐ Unsatisfactory

Designated haul routes, safety or other travel areas.

☒ Satisfactory ☐ Unsatisfactory

Material(s), materials storage areas (including stockpiles), waste storage areas, secondary containment, spill prevention or vehicle maintenance and fueling operations exposed to precipitation

☒ Satisfactory ☐ Unsatisfactory

Locations where stormwater has the potential to discharge offsite including Inlets, outfalls, offsite controls, and detention basins

☐ Satisfactory ☒ Unsatisfactory

Locations where vehicles exit the site / vehicle tracking control

☒ Satisfactory ☐ Unsatisfactory

Concrete washout operations, control measures and cementitious material waste

☒ Satisfactory ☐ Unsatisfactory

Trash, debris and construction waste.

☒ Satisfactory ☐ Unsatisfactory

Portable toilets appropriately located

☒ Satisfactory ☐ Unsatisfactory

Paved surfaces clear of uncontained potential pollutants (tracking or construction materials)

☒ Satisfactory ☐ Unsatisfactory

Other implemented control measures, not specifically addressed above, requiring routine maintenance. Including, but not limited to, SWMP narrative and plans and other documentation.

☒ Satisfactory ☐ Unsatisfactory

**IDENTIFICATION OF INADEQUATE CONTROL MEASURES REQUIRING CORRECTIVE ACTION**

Are there new, uncontained, potential sources of pollutants on site since the previous inspection for which control measures need to be implemented?

☐ Yes ☒ No

Is there evidence of pollutants (or potential pollutants) leaving the construction site boundaries, entering the stormwater drainage system or discharging to state waters?

☐ Yes ☒ No

Since the previous inspection have there been any instance of endangerment to health or the environment, bypass or upset conditions (including numeric effluent limit violations) requiring 24-hour notification?

☐ Yes ☒ No

Areas of the site for which new or modified control measures are required to minimize potential discharges, where control measures are not designed or implemented in accordance with the requirements of the permit or control measures are not installed/implemented to operate in accordance with its design:

Construction site perimeter

☒ Pass ☐ Action Required

All disturbed areas (including disturbed areas subject to temporary stabilization requirements)

☒ Pass ☐ Action Required

Designated haul routes, safety or travel areas.

☒ Pass ☐ Action Required

Material(s) materials storage areas (including stockpiles) and waste storage areas, secondary containment, spill prevention or vehicle maintenance and fueling operations exposed to precipitation

☒ Pass ☐ Action Required

Locations where stormwater has the potential to discharge offsite including outfalls, offsite controls, and detention basins.

☒ Pass ☐ Action Required

Locations where vehicles exit the site / vehicle tracking control

☒ Pass ☐ Action Required

Concrete washout operations and/or control measures and cementitious material waste.

☒ Pass ☐ Action Required

Trash, debris and construction waste.

☒ Pass ☐ Action Required

Portable toilets appropriately located

☒ Pass ☐ Action Required

Paved surfaces clear of uncontained potential pollutants (tracking or construction material)

☒ Pass ☐ Action Required

Other control measures, not specifically addressed above, missing, not designed or implemented in accordance with the requirements of the permit and/or not implemented to operate in accordance with its design. Including, but not limited to SWMP narrative and plans and other documentation

☒ Pass ☐ Action Required

**CONTROL MEASURES REQUIRING ROUTINE MAINTENANCE**

Definition: Any control measure that is still operating in accordance with its design and the requirements of the permit, but requires maintenance to prevent a breach of the control measure. These items are not subject to the corrective action requirements as specified in Part I.B.1.c of the permit.

Date Observed	Location	Control Measure	Maintenance Required / Action Taken	Date Completed / Initials
11/24/2021	ITEM 2	Silt Fence	Repair. (replace broken stakes, restaple fabric to posts, replace if needed & etc.).	12/01/2021 P.Z.
11/24/2021	ITEM 1	Silt Fence	Repair. (replace broken stakes, restaple fabric to posts, replace if needed & etc.).	12/01/2021 P.Z.
11/24/2021	ITEM 3	Silt Fence	Repair. (replace broken stakes, restaple fabric to posts, replace if needed & etc.).	12/01/2021 P.Z.

**INADEQUATE CONTROL MEASURES REQUIRING CORRECTIVE ACTION**

Definition: Any control measure that is not designed or implemented in accordance with the requirements of the permit and/or any control measure that is not implemented to operate in accordance with its design. This includes control measures that have not been implemented for pollutant sources. If it is infeasible to install or repair the control measure immediately after discovering the deficiency the reason must be documented and a schedule included to return the control measure to effective operating condition as possible.

Date Discovered	Location	Description of Inadequate Control Measure	Description of Corrective Action If deficiency not corrected immediately, reason and schedule to correct	Date Completed / Initials
-----------------	----------	---	--	---------------------------





## Inspection Maps

### Inspection

Site Name: Erie Commons

Customer: Community Development Group  
Of Erie Inc

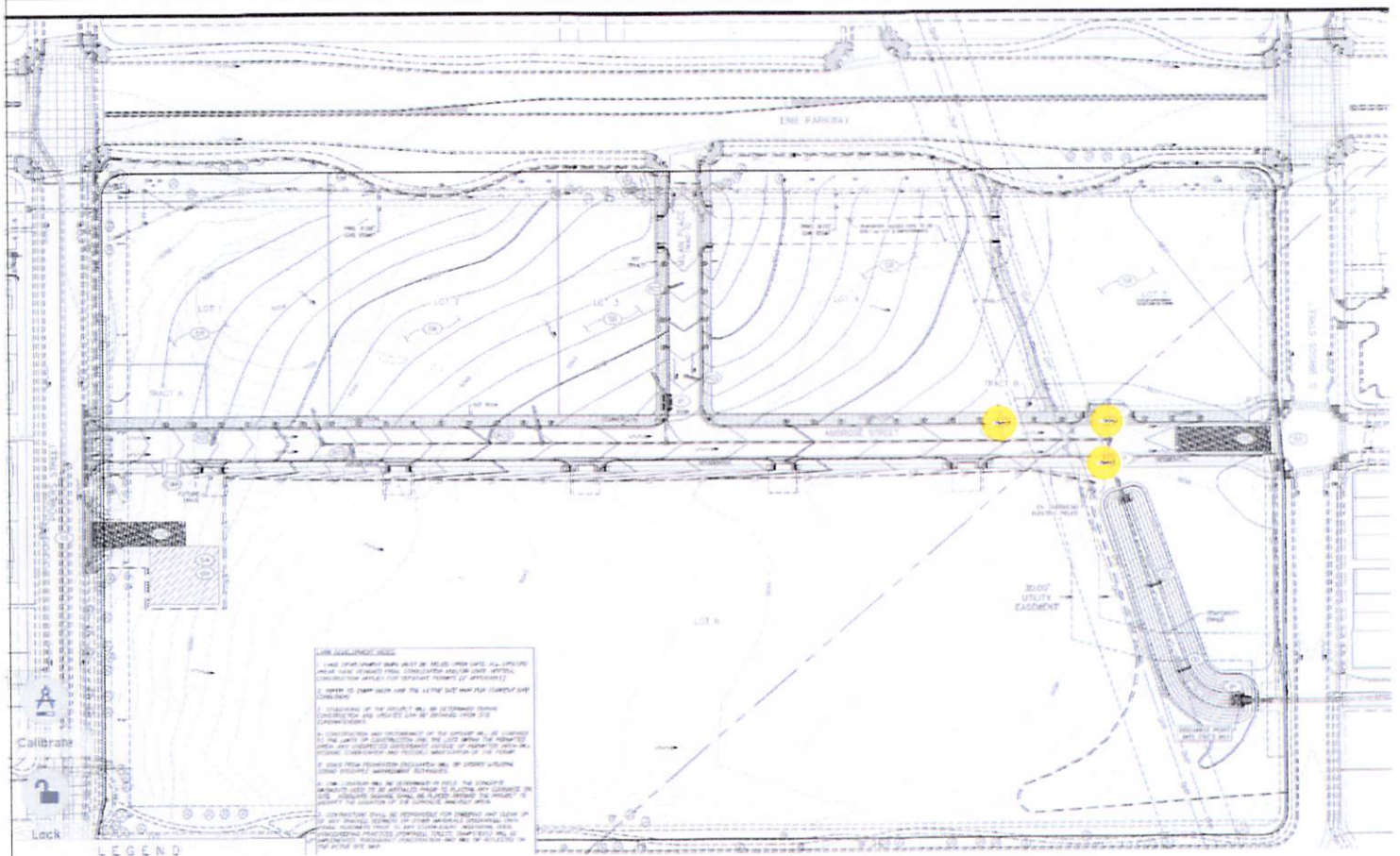
Permit Number: COR413407

Inspection Type: Routine Weekly

Permit Description: Erie Commons F4

Inspector: Adam Buckreis - Qualified  
Stormwater Manager  
Adam@earthx.us

Inspection Date: 12/01/2021 11:20AM



Color	Title	BMP	Link	Comments	Dates	Permanent
Yellow	Item 1	Silt Fence	8 - Locations where stormwater has the potential to discharge offsite including Inlets, outfalls, offsite controls, and detention basins			False

## Inspection Maps

	Item 2	Silt Fence	8 - Locations where stormwater has the potential to discharge offsite including Inlets, outfalls, offsite controls, and detention basins			False
	Item 3	Silt Fence	8 - Locations where stormwater has the potential to discharge offsite including Inlets, outfalls, offsite controls, and detention basins			False





## Inspection Maps

### Inspection

Site Name: Erie Commons

Customer: Community Development Group  
Of Erie Inc

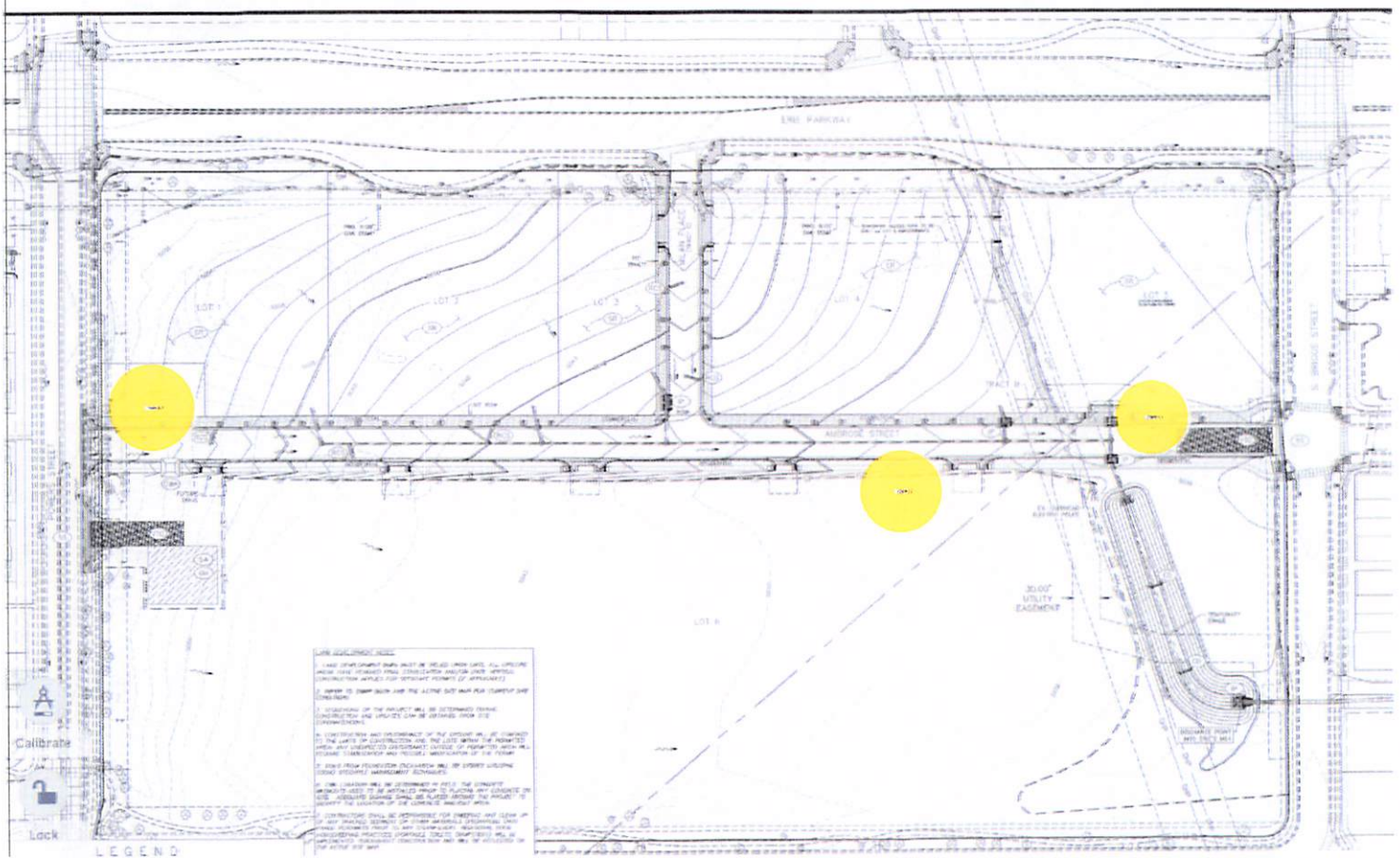
Permit Number: COR413407

Inspection Type: Routine Weekly

Permit Description: Erie Commons F4

Inspector: Adam Buckreis - Qualified  
Stormwater Manager  
Adam@earthx.us

Inspection Date: 12/08/2021 02:00PM



Color	Title	BMP	Link	Comments	Dates	Permanent
Yellow	Item 1	Concrete waste / tear out	10 - Concrete washout operations, control measures and cementitious material waste			False
Yellow	Item 2	Concrete waste / tear out	10 - Concrete washout operations, control measures and cementitious material waste			False



## Inspection Maps

	Item 3	Concrete waste / tear out	10 - Concrete washout operations, control measures and cementitious material waste			False
--	--------	------------------------------	---	--	--	-------



## CONSTRUCTION STORMWATER SITE INSPECTION REPORT

Facility Name	Erie Commons F4	Permittee	Community Development Group Of Erie Inc
Date of Inspection	12/15/2021	Weather Conditions	Sunny
Permit Certification #	COR413407	Approx. Temperature	49
Phase of Construction	grading and utilites	Disturbed Acreage	12.5 ac
Inspector Name	Adam Buckreis	Inspector Title	Qualified Stormwater Manager

### INSPECTION FREQUENCY - Minimum frequency for each site.

☒ At least one inspection every 7 calendar days

☐ At least one inspection every 14 calendar days

☐ Post-storm event within 24 hours from end of precipitation or snowmelt event that causes surface erosion. Event Date:

☐ Post-storm event at temporarily idle site

☐ Inspections at completed sites

☐ A deviation from the minimum inspection schedule has occurred.  
Describe if deviation occurred:

Changes made to the SWMP since the last inspection or during this inspection:

Exact changes and permit compliance notification noted where change occurred.

☒ Map ☐ Acreage ☐ Schedule ☐ Details ☐ Documentation Added ☐ Active Areas Modified

(Per standard industry practices, the act of ordering supplies and/or scheduling the work is the first step in responding to either routine maintenance or corrective actions. Corrective actions identified in this site inspection are being actively worked on as soon as the inspection report is transmitted to the individuals on the permittee's staff or the third party responsible for resolving the item.)

After adequate corrective action(s) and maintenance have been taken, or where a report does not identify any incidents requiring corrective action or maintenance, the individual(s) designated as the Qualified Stormwater Manager, shall sign and certify the below statement:

"I verify that, to the best of my knowledge and belief, all corrective action and maintenance items identified during the inspection are complete, and the site is currently in compliance with the permit."

Peter Zana

Name of Qualified Stormwater Manager



Signature of Qualified Stormwater Manager

Qualified Stormwater Manager

Title of Qualified Stormwater Manager

12/17/2021

Date

Notes/Comments:

**SITE INSPECTION: ROUTINE OPERATIONS AND ROUTINE MAINTAINENCE.**

Are there new potential sources of pollutants on site, since the previous inspection, requiring routine SWMP updates or modified control measure(s)?

☐ Yes ☒ No

Are there areas of the site for which control measures to minimize potential pollutant discharges are required in addition to (or modified from) control measure(s) currently on site?

☐ Yes ☒ No

Is there evidence of, or the potential for, pollutants to potentially leave the construction site boundaries for which routine operations or maintenance can reduce potential discharges from entering the drainage system or discharging to state waters.

☐ Yes ☒ No

Areas of routine operations or maintenance that remain operating in accordance with its design and the requirements of the permit require: Additional or modified control measures to minimize potential discharge(s); maintenance to prevent a breach of the control measure; or control measures to be installed to address upcoming changes in the phase of construction.

Construction site perimeter

☐ Satisfactory ☒ Unsatisfactory

All disturbed areas (including disturbed areas subject to temporary stabilization requirements)

☒ Satisfactory ☐ Unsatisfactory

Designated haul routes, safety or other travel areas.

☒ Satisfactory ☐ Unsatisfactory

Material(s), materials storage areas (including stockpiles), waste storage areas, secondary containment, spill prevention or vehicle maintenance and fueling operations exposed to precipitation

☒ Satisfactory ☐ Unsatisfactory

Locations where stormwater has the potential to discharge offsite including Inlets, outfalls, offsite controls, and detention basins

☒ Satisfactory ☐ Unsatisfactory

Locations where vehicles exit the site / vehicle tracking control

☒ Satisfactory ☐ Unsatisfactory

Concrete washout operations, control measures and cementitious material waste

☐ Satisfactory ☒ Unsatisfactory

Trash, debris and construction waste.

☒ Satisfactory ☐ Unsatisfactory

Portable toilets appropriately located

☒ Satisfactory ☐ Unsatisfactory

Paved surfaces clear of uncontained potential pollutants (tracking or construction materials)

☐ Satisfactory ☒ Unsatisfactory

Other implemented control measures, not specifically addressed above, requiring routine maintenance. Including, but not limited to, SWMP narrative and plans and other documentation.

☒ Satisfactory ☐ Unsatisfactory



**IDENTIFICATION OF INADEQUATE CONTROL MEASURES REQUIRING CORRECTIVE ACTION**

Are there new, uncontained, potential sources of pollutants on site since the previous inspection for which control measures need to be implemented?

☐ Yes ☒ No

Is there evidence of pollutants (or potential pollutants) leaving the construction site boundaries, entering the stormwater drainage system or discharging to state waters?

☐ Yes ☒ No

Since the previous inspection have there been any instance of endangerment to health or the environment, bypass or upset conditions (including numeric effluent limit violations) requiring 24-hour notification?

☐ Yes ☒ No

Areas of the site for which new or modified control measures are required to minimize potential discharges, where control measures are not designed or implemented in accordance with the requirements of the permit or control measures are not installed/implemented to operate in accordance with its design:

Construction site perimeter

☒ Pass ☐ Action Required

All disturbed areas (including disturbed areas subject to temporary stabilization requirements)

☒ Pass ☐ Action Required

Designated haul routes, safety or travel areas.

☒ Pass ☐ Action Required

Material(s) materials storage areas (including stockpiles) and waste storage areas, secondary containment, spill prevention or vehicle maintenance and fueling operations exposed to precipitation

☒ Pass ☐ Action Required

Locations where stormwater has the potential to discharge offsite including outfalls, offsite controls, and detention basins.

☒ Pass ☐ Action Required

Locations where vehicles exit the site / vehicle tracking control

☒ Pass ☐ Action Required

Concrete washout operations and/or control measures and cementitious material waste.

☒ Pass ☐ Action Required

Trash, debris and construction waste.

☒ Pass ☐ Action Required

Portable toilets appropriately located

☒ Pass ☐ Action Required

Paved surfaces clear of uncontained potential pollutants (tracking or construction material)

☒ Pass ☐ Action Required

Other control measures, not specifically addressed above, missing, not designed or implemented in accordance with the requirements of the permit and/or not implemented to operate in accordance with its design. Including, but not limited to SWMP narrative and plans and other documentation

☒ Pass ☐ Action Required



**CONTROL MEASURES REQUIRING ROUTINE MAINTENANCE**

Definition: Any control measure that is still operating in accordance with its design and the requirements of the permit, but requires maintenance to prevent a breach of the control measure. These items are not subject to the corrective action requirements as specified in Part I.B.1.c of the permit.

Date Observed	Location	Control Measure	Maintenance Required / Action Taken	Date Completed / Initials
12/15/2021	ITEM 1	Silt Fence	Repair. (replace broken stakes, restaple fabric to posts, replace if needed & etc.). fence is boulder creek jobsite	12/17/2021 P.Z.

**INADEQUATE CONTROL MEASURES REQUIRING CORRECTIVE ACTION**

Definition: Any control measure that is not designed or implemented in accordance with the requirements of the permit and/or any control measure that is not implemented to operate in accordance with its design. This includes control measures that have not been implemented for pollutant sources. If it is infeasible to install or repair the control measure immediately after discovering the deficiency the reason must be documented and a schedule included to return the control measure to effective operating condition as possible.

Date Discovered	Location	Description of Inadequate Control Measure	Description of Corrective Action If deficiency not corrected immediately, reason and schedule to correct	Date Completed / Initials
-----------------	----------	---	--	---------------------------



## Inspection Maps

### Inspection

Site Name: Erie Commons

Customer: Community Development Group  
Of Erie Inc

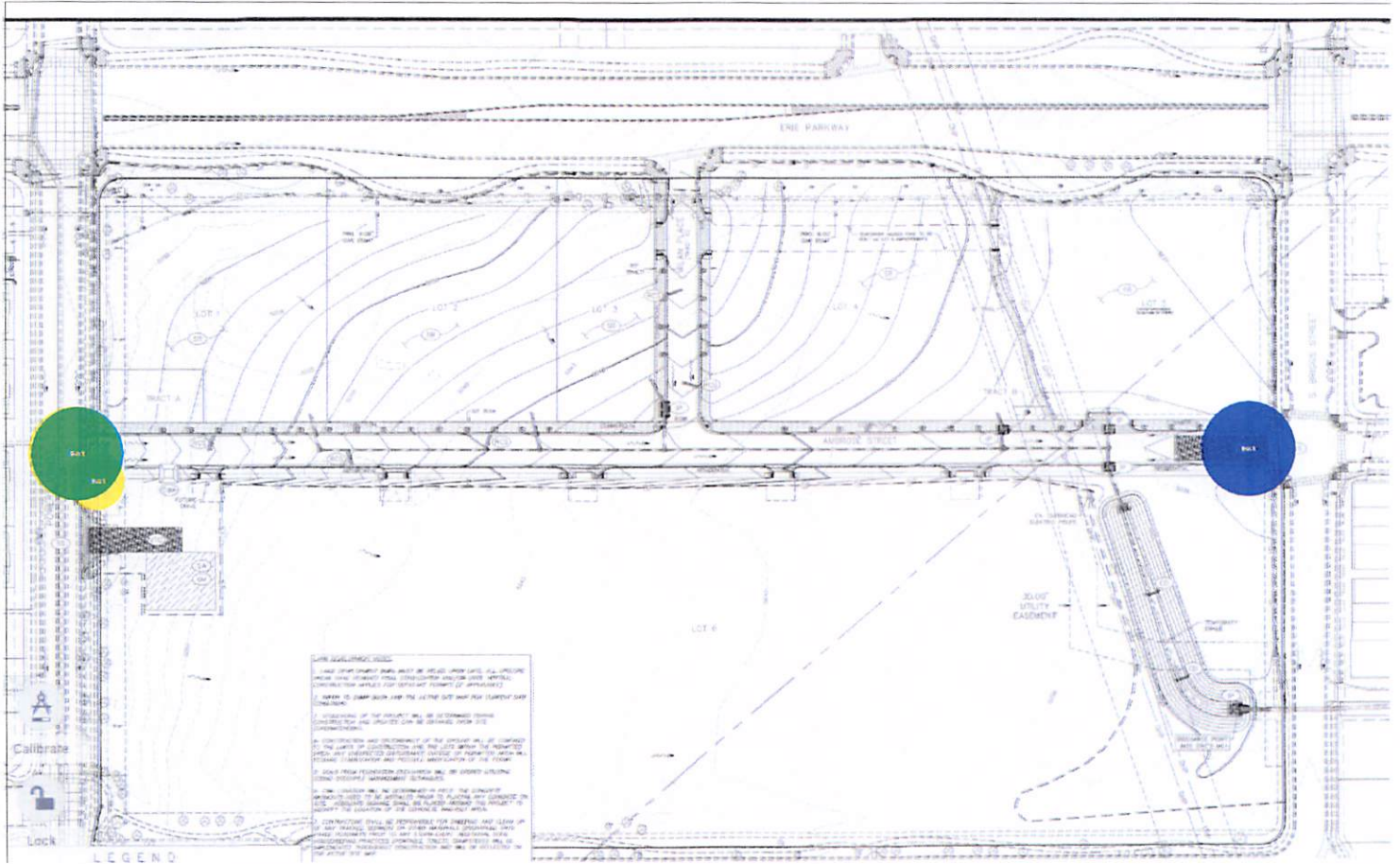
Permit Number: COR413407

Inspection Type: Routine Weekly

Permit Description: Erie Commons F4

Inspector: Adam Buckreis - Qualified  
Stormwater Manager  
Adam@earthx.us

Inspection Date: 12/15/2021 12:33PM



Color	Title	BMP	Link	Comments	Dates	Permanent
Yellow	Item 1	Silt Fence	4 - Construction site perimeter			False
Green	Item 2	Paved Surfaces	13 - Paved surfaces clear of uncontained potential pollutants (tracking or construction materials)			False





## Inspection Maps

	Item 3	Concrete waste / tear out	10 - Concrete washout operations, control measures and cementitious material waste			False
--	--------	------------------------------	---	--	--	-------

## CONSTRUCTION STORMWATER SITE INSPECTION REPORT

Facility Name	Erie Commons F4	Permittee	Community Development Group Of Erie Inc
Date of Inspection	12/22/2021	Weather Conditions	Sunny
Permit Certification #	COR413407	Approx. Temperature	62
Phase of Construction	grading and utilites	Disturbed Acreage	12.5 ac
Inspector Name	Adam Buckreis	Inspector Title	Qualified Stormwater Manager

### INSPECTION FREQUENCY - Minimum frequency for each site.

- ☒ At least one inspection every 7 calendar days
- ☐ At least one inspection every 14 calendar days
- ☐ Post-storm event within 24 hours from end of precipitation or snowmelt event that causes surface erosion. Event Date:
- ☐ Post-storm event at temporarily idle site

☐ Inspections at completed sites

☐ A deviation from the minimum inspection schedule has occurred.  
Describe if deviation occurred:

Changes made to the SWMP since the last inspection or during this inspection:

Exact changes and permit compliance notification noted where change occurred.

☒ Map ☐ Acreage ☐ Schedule ☐ Details ☐ Documentation Added ☐ Active Areas Modified

(Per standard industry practices, the act of ordering supplies and/or scheduling the work is the first step in responding to either routine maintenance or corrective actions. Corrective actions identified in this site inspection are being actively worked on as soon as the inspection report is transmitted to the individuals on the permittee's staff or the third party responsible for resolving the item.)

After adequate corrective action(s) and maintenance have been taken, or where a report does not identify any incidents requiring corrective action or maintenance, the individual(s) designated as the Qualified Stormwater Manager, shall sign and certify the below statement:

"I verify that, to the best of my knowledge and belief, all corrective action and maintenance items identified during the inspection are complete, and the site is currently in compliance with the permit."

Peter Zana

Name of Qualified Stormwater Manager



Signature of Qualified Stormwater Manager

Qualified Stormwater Manager

Title of Qualified Stormwater Manager

12/22/2021

Date

Notes/Comments:

**SITE INSPECTION: ROUTINE OPERATIONS AND ROUTINE MAINTAINENCE.**

Are there new potential sources of pollutants on site, since the previous inspection, requiring routine SWMP updates or modified control measure(s)?

☐ Yes ☒ No

Are there areas of the site for which control measures to minimize potential pollutant discharges are required in addition to (or modified from) control measure(s) currently on site?

☐ Yes ☒ No

Is there evidence of, or the potential for, pollutants to potentially leave the construction site boundaries for which routine operations or maintenance can reduce potential discharges from entering the drainage system or discharging to state waters.

☐ Yes ☒ No

Areas of routine operations or maintenance that remain operating in accordance with its design and the requirements of the permit require: Additional or modified control measures to minimize potential discharge(s); maintenance to prevent a breach of the control measure; or control measures to be installed to address upcoming changes in the phase of construction.

Construction site perimeter

☒ Satisfactory ☐ Unsatisfactory

All disturbed areas (including disturbed areas subject to temporary stabilization requirements)

☒ Satisfactory ☐ Unsatisfactory

Designated haul routes, safety or other travel areas.

☒ Satisfactory ☐ Unsatisfactory

Material(s), materials storage areas (including stockpiles), waste storage areas, secondary containment, spill prevention or vehicle maintenance and fueling operations exposed to precipitation

☒ Satisfactory ☐ Unsatisfactory

Locations where stormwater has the potential to discharge offsite including Inlets, outfalls, offsite controls, and detention basins

☒ Satisfactory ☐ Unsatisfactory

Locations where vehicles exit the site / vehicle tracking control

☒ Satisfactory ☐ Unsatisfactory

Concrete washout operations, control measures and cementitious material waste

☒ Satisfactory ☐ Unsatisfactory

Trash, debris and construction waste.

☒ Satisfactory ☐ Unsatisfactory

Portable toilets appropriately located

☒ Satisfactory ☐ Unsatisfactory

Paved surfaces clear of uncontained potential pollutants (tracking or construction materials)

☒ Satisfactory ☐ Unsatisfactory

Other implemented control measures, not specifically addressed above, requiring routine maintenance. Including, but not limited to, SWMP narrative and plans and other documentation.

☒ Satisfactory ☐ Unsatisfactory



**IDENTIFICATION OF INADEQUATE CONTROL MEASURES REQUIRING CORRECTIVE ACTION**

Are there new, uncontained, potential sources of pollutants on site since the previous inspection for which control measures need to be implemented?

☐ Yes ☒ No

Is there evidence of pollutants (or potential pollutants) leaving the construction site boundaries, entering the stormwater drainage system or discharging to state waters?

☐ Yes ☒ No

Since the previous inspection have there been any instance of endangerment to health or the environment, bypass or upset conditions (including numeric effluent limit violations) requiring 24-hour notification?

☐ Yes ☒ No

Areas of the site for which new or modified control measures are required to minimize potential discharges, where control measures are not designed or implemented in accordance with the requirements of the permit or control measures are not installed/implemented to operate in accordance with its design:

Construction site perimeter

☒ Pass ☐ Action Required

All disturbed areas (including disturbed areas subject to temporary stabilization requirements)

☒ Pass ☐ Action Required

Designated haul routes, safety or travel areas.

☒ Pass ☐ Action Required

Material(s) materials storage areas (including stockpiles) and waste storage areas, secondary containment, spill prevention or vehicle maintenance and fueling operations exposed to precipitation

☒ Pass ☐ Action Required

Locations where stormwater has the potential to discharge offsite including outfalls, offsite controls, and detention basins.

☒ Pass ☐ Action Required

Locations where vehicles exit the site / vehicle tracking control

☒ Pass ☐ Action Required

Concrete washout operations and/or control measures and cementitious material waste.

☒ Pass ☐ Action Required

Trash, debris and construction waste.

☒ Pass ☐ Action Required

Portable toilets appropriately located

☒ Pass ☐ Action Required

Paved surfaces clear of uncontained potential pollutants (tracking or construction material)

☒ Pass ☐ Action Required

Other control measures, not specifically addressed above, missing, not designed or implemented in accordance with the requirements of the permit and/or not implemented to operate in accordance with its design. Including, but not limited to SWMP narrative and plans and other documentation

☒ Pass ☐ Action Required

**CONTROL MEASURES REQUIRING ROUTINE MAINTENANCE**

Definition: Any control measure that is still operating in accordance with its design and the requirements of the permit, but requires maintenance to prevent a breach of the control measure. These items are not subject to the corrective action requirements as specified in Part I.B.1.c of the permit.

Date Observed	Location	Control Measure	Maintenance Required / Action Taken	Date Completed / Initials
---------------	----------	-----------------	--	------------------------------

**INADEQUATE CONTROL MEASURES REQUIRING CORRECTIVE ACTION**

Definition: Any control measure that is not designed or implemented in accordance with the requirements of the permit and/or any control measure that is not implemented to operate in accordance with its design. This includes control measures that have not been implemented for pollutant sources. If it is infeasible to install or repair the control measure immediately after discovering the deficiency the reason must be documented and a schedule included to return the control measure to effective operating condition as possible.

Date Discovered	Location	Description of Inadequate Control Measure	Description of Corrective Action If deficiency not corrected immediately, reason and schedule to correct	Date Completed / Initials
-----------------	----------	---	--	------------------------------



## Inspection Maps

### Inspection

Site Name: Erie Commons

Customer: Community Development Group  
Of Erie Inc

Permit Number: COR413407

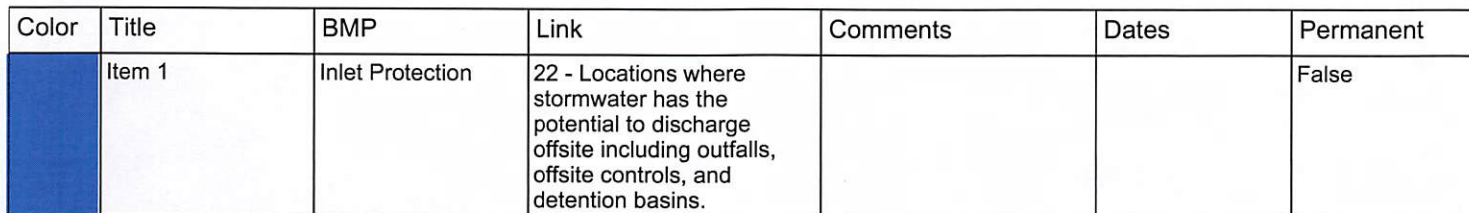
Inspection Type: Routine Weekly

Permit Description: Erie Commons F4

Inspector: Adam Buckreis - Qualified  
Stormwater Manager  
Adam@earthx.us

Inspection Date: 12/29/2021 11:34AM





## Inspection Maps

	Item 2	Inlet Protection	22 - Locations where stormwater has the potential to discharge offsite including outfalls, offsite controls, and detention basins.			False
	Item 3	Concrete waste / tear out	10 - Concrete washout operations, control measures and cementitious material waste			False

## CONSTRUCTION STORMWATER SITE INSPECTION REPORT

Facility Name	Erie Commons F4	Permittee	Community Development Group Of Erie Inc
Date of Inspection	01/04/2022	Weather Conditions	Snow Covered
Permit Certification #	COR413407	Approx. Temperature	45
Phase of Construction	grading and utilites	Disturbed Acreage	12.5 ac
Inspector Name	Brian Garber	Inspector Title	Qualified Stormwater Manager

### INSPECTION FREQUENCY - Minimum frequency for each site.

☒ At least one inspection every 7 calendar days

☐ At least one inspection every 14 calendar days

☐ Post-storm event within 24 hours from end of precipitation or snowmelt event that causes surface erosion. Event Date:

☐ Post-storm event at temporarily idle site

☐ Inspections at completed sites

☒ A deviation from the minimum inspection schedule has occurred.

Describe if deviation occurred: Inspection day early to maintain 7 day inspections schedule

Changes made to the SWMP since the last inspection or during this inspection:

Exact changes and permit compliance notification noted where change occurred.

☐ Map ☐ Acreage ☐ Schedule ☐ Details ☐ Documentation Added ☐ Active Areas Modified

(Per standard industry practices, the act of ordering supplies and/or scheduling the work is the first step in responding to either routine maintenance or corrective actions. Corrective actions identified in this site inspection are being actively worked on as soon as the inspection report is transmitted to the individuals on the permittee's staff or the third party responsible for resolving the item.)

After adequate corrective action(s) and maintenance have been taken, or where a report does not identify any incidents requiring corrective action or maintenance, the individual(s) designated as the Qualified Stormwater Manager, shall sign and certify the below statement:

"I verify that, to the best of my knowledge and belief, all corrective action and maintenance items identified during the inspection are complete, and the site is currently in compliance with the permit."

Wade Duncan

Name of Qualified Stormwater Manager



Signature of Qualified Stormwater Manager

Project Manager

Title of Qualified Stormwater Manager

01/04/2022

Date

Notes/Comments:

Site snow covered



**SITE INSPECTION: ROUTINE OPERATIONS AND ROUTINE MAINTAINENCE.**

Are there new potential sources of pollutants on site, since the previous inspection, requiring routine SWMP updates or modified control measure(s)?

☐ Yes ☒ No

Are there areas of the site for which control measures to minimize potential pollutant discharges are required in addition to (or modified from) control measure(s) currently on site?

☐ Yes ☒ No

Is there evidence of, or the potential for, pollutants to potentially leave the construction site boundaries for which routine operations or maintenance can reduce potential discharges from entering the drainage system or discharging to state waters.

☐ Yes ☒ No

Areas of routine operations or maintenance that remain operating in accordance with its design and the requirements of the permit require: Additional or modified control measures to minimize potential discharge(s); maintenance to prevent a breach of the control measure; or control measures to be installed to address upcoming changes in the phase of construction.

Construction site perimeter

☒ Satisfactory ☐ Unsatisfactory

All disturbed areas (including disturbed areas subject to temporary stabilization requirements)

☒ Satisfactory ☐ Unsatisfactory

Designated haul routes, safety or other travel areas.

☒ Satisfactory ☐ Unsatisfactory

Material(s), materials storage areas (including stockpiles), waste storage areas, secondary containment, spill prevention or vehicle maintenance and fueling operations exposed to precipitation

☒ Satisfactory ☐ Unsatisfactory

Locations where stormwater has the potential to discharge offsite including Inlets, outfalls, offsite controls, and detention basins

☒ Satisfactory ☐ Unsatisfactory

Locations where vehicles exit the site / vehicle tracking control

☒ Satisfactory ☐ Unsatisfactory

Concrete washout operations, control measures and cementitious material waste

☒ Satisfactory ☐ Unsatisfactory

Trash, debris and construction waste.

☒ Satisfactory ☐ Unsatisfactory

Portable toilets appropriately located

☒ Satisfactory ☐ Unsatisfactory

Paved surfaces clear of uncontained potential pollutants (tracking or construction materials)

☒ Satisfactory ☐ Unsatisfactory

Other implemented control measures, not specifically addressed above, requiring routine maintenance. Including, but not limited to, SWMP narrative and plans and other documentation.

☒ Satisfactory ☐ Unsatisfactory

**IDENTIFICATION OF INADEQUATE CONTROL MEASURES REQUIRING CORRECTIVE ACTION**

Are there new, uncontained, potential sources of pollutants on site since the previous inspection for which control measures need to be implemented?

☐ Yes ☒ No

Is there evidence of pollutants (or potential pollutants) leaving the construction site boundaries, entering the stormwater drainage system or discharging to state waters?

☐ Yes ☒ No

Since the previous inspection have there been any instance of endangerment to health or the environment, bypass or upset conditions (including numeric effluent limit violations) requiring 24-hour notification?

☐ Yes ☒ No

Areas of the site for which new or modified control measures are required to minimize potential discharges, where control measures are not designed or implemented in accordance with the requirements of the permit or control measures are not installed/implemented to operate in accordance with its design:

Construction site perimeter

☒ Pass ☐ Action Required

All disturbed areas (including disturbed areas subject to temporary stabilization requirements)

☒ Pass ☐ Action Required

Designated haul routes, safety or travel areas.

☒ Pass ☐ Action Required

Material(s) materials storage areas (including stockpiles) and waste storage areas, secondary containment, spill prevention or vehicle maintenance and fueling operations exposed to precipitation

☒ Pass ☐ Action Required

Locations where stormwater has the potential to discharge offsite including outfalls, offsite controls, and detention basins.

☒ Pass ☐ Action Required

Locations where vehicles exit the site / vehicle tracking control

☒ Pass ☐ Action Required

Concrete washout operations and/or control measures and cementitious material waste.

☒ Pass ☐ Action Required

Trash, debris and construction waste.

☒ Pass ☐ Action Required

Portable toilets appropriately located

☒ Pass ☐ Action Required

Paved surfaces clear of uncontained potential pollutants (tracking or construction material)

☒ Pass ☐ Action Required

Other control measures, not specifically addressed above, missing, not designed or implemented in accordance with the requirements of the permit and/or not implemented to operate in accordance with its design. Including, but not limited to SWMP narrative and plans and other documentation

☒ Pass ☐ Action Required

**CONTROL MEASURES REQUIRING ROUTINE MAINTENANCE**

Definition: Any control measure that is still operating in accordance with its design and the requirements of the permit, but requires maintenance to prevent a breach of the control measure. These items are not subject to the corrective action requirements as specified in Part I.B.1.c of the permit.

Date Observed	Location	Control Measure	Maintenance Required / Action Taken	Date Completed / Initials
---------------	----------	-----------------	--	------------------------------

**INADEQUATE CONTROL MEASURES REQUIRING CORRECTIVE ACTION**

Definition: Any control measure that is not designed or implemented in accordance with the requirements of the permit and/or any control measure that is not implemented to operate in accordance with its design. This includes control measures that have not been implemented for pollutant sources. If it is infeasible to install or repair the control measure immediately after discovering the deficiency the reason must be documented and a schedule included to return the control measure to effective operating condition as possible.

Date Discovered	Location	Description of Inadequate Control Measure	Description of Corrective Action If deficiency not corrected immediately, reason and schedule to correct	Date Completed / Initials
-----------------	----------	---	--	------------------------------



## CONSTRUCTION STORMWATER SITE INSPECTION REPORT

Facility Name	Erie Commons F4	Permittee	Community Development Group Of Erie Inc
Date of Inspection	01/07/2022	Weather Conditions	Snow Covered
Permit Certification #	COR413407	Approx. Temperature	26
Phase of Construction	grading and utilites	Disturbed Acreage	12.5 ac
Inspector Name	Adam Buckreis	Inspector Title	Qualified Stormwater Manager

### INSPECTION FREQUENCY - Minimum frequency for each site.

- ☒ At least one inspection every 7 calendar days
- ☐ At least one inspection every 14 calendar days
- ☐ Post-storm event within 24 hours from end of precipitation or snowmelt event that causes surface erosion. Event Date:
- ☐ Post-storm event at temporarily idle site

☐ Inspections at completed sites

☐ A deviation from the minimum inspection schedule has occurred.  
Describe if deviation occurred:

Changes made to the SWMP since the last inspection or during this inspection:

Exact changes and permit compliance notification noted where change occurred.

☐ Map ☐ Acreage ☐ Schedule ☐ Details ☐ Documentation Added ☐ Active Areas Modified

(Per standard industry practices, the act of ordering supplies and/or scheduling the work is the first step in responding to either routine maintenance or corrective actions. Corrective actions identified in this site inspection are being actively worked on as soon as the inspection report is transmitted to the individuals on the permittee's staff or the third party responsible for resolving the item.)

After adequate corrective action(s) and maintenance have been taken, or where a report does not identify any incidents requiring corrective action or maintenance, the individual(s) designated as the Qualified Stormwater Manager, shall sign and certify the below statement:

"I verify that, to the best of my knowledge and belief, all corrective action and maintenance items identified during the inspection are complete, and the site is currently in compliance with the permit."

Peter Zana

Name of Qualified Stormwater Manager



Signature of Qualified Stormwater Manager

Qualified Stormwater Manager

Title of Qualified Stormwater Manager

01/07/2022

Date

Notes/Comments:

Site is snow covered, low level bmp's not visible

**SITE INSPECTION: ROUTINE OPERATIONS AND ROUTINE MAINTAINENCE.**

Are there new potential sources of pollutants on site, since the previous inspection, requiring routine SWMP updates or modified control measure(s)?

☐ Yes ☒ No

Are there areas of the site for which control measures to minimize potential pollutant discharges are required in addition to (or modified from) control measure(s) currently on site?

☐ Yes ☒ No

Is there evidence of, or the potential for, pollutants to potentially leave the construction site boundaries for which routine operations or maintenance can reduce potential discharges from entering the drainage system or discharging to state waters.

☐ Yes ☒ No

Areas of routine operations or maintenance that remain operating in accordance with its design and the requirements of the permit require: Additional or modified control measures to minimize potential discharge(s); maintenance to prevent a breach of the control measure; or control measures to be installed to address upcoming changes in the phase of construction.

Construction site perimeter

☒ Satisfactory ☐ Unsatisfactory

All disturbed areas (including disturbed areas subject to temporary stabilization requirements)

☒ Satisfactory ☐ Unsatisfactory

Designated haul routes, safety or other travel areas.

☒ Satisfactory ☐ Unsatisfactory

Material(s), materials storage areas (including stockpiles), waste storage areas, secondary containment, spill prevention or vehicle maintenance and fueling operations exposed to precipitation

☒ Satisfactory ☐ Unsatisfactory

Locations where stormwater has the potential to discharge offsite including Inlets, outfalls, offsite controls, and detention basins

☒ Satisfactory ☐ Unsatisfactory

Locations where vehicles exit the site / vehicle tracking control

☒ Satisfactory ☐ Unsatisfactory

Concrete washout operations, control measures and cementitious material waste

☒ Satisfactory ☐ Unsatisfactory

Trash, debris and construction waste.

☒ Satisfactory ☐ Unsatisfactory

Portable toilets appropriately located

☒ Satisfactory ☐ Unsatisfactory

Paved surfaces clear of uncontained potential pollutants (tracking or construction materials)

☒ Satisfactory ☐ Unsatisfactory

Other implemented control measures, not specifically addressed above, requiring routine maintenance. Including, but not limited to, SWMP narrative and plans and other documentation.

☒ Satisfactory ☐ Unsatisfactory



**IDENTIFICATION OF INADEQUATE CONTROL MEASURES REQUIRING CORRECTIVE ACTION**

Are there new, uncontained, potential sources of pollutants on site since the previous inspection for which control measures need to be implemented?

☐ Yes ☒ No

Is there evidence of pollutants (or potential pollutants) leaving the construction site boundaries, entering the stormwater drainage system or discharging to state waters?

☐ Yes ☒ No

Since the previous inspection have there been any instance of endangerment to health or the environment, bypass or upset conditions (including numeric effluent limit violations) requiring 24-hour notification?

☐ Yes ☒ No

Areas of the site for which new or modified control measures are required to minimize potential discharges, where control measures are not designed or implemented in accordance with the requirements of the permit or control measures are not installed/implemented to operate in accordance with its design:

Construction site perimeter

☒ Pass ☐ Action Required

All disturbed areas (including disturbed areas subject to temporary stabilization requirements)

☒ Pass ☐ Action Required

Designated haul routes, safety or travel areas.

☒ Pass ☐ Action Required

Material(s) materials storage areas (including stockpiles) and waste storage areas, secondary containment, spill prevention or vehicle maintenance and fueling operations exposed to precipitation

☒ Pass ☐ Action Required

Locations where stormwater has the potential to discharge offsite including outfalls, offsite controls, and detention basins.

☒ Pass ☐ Action Required

Locations where vehicles exit the site / vehicle tracking control

☒ Pass ☐ Action Required

Concrete washout operations and/or control measures and cementitious material waste.

☒ Pass ☐ Action Required

Trash, debris and construction waste.

☒ Pass ☐ Action Required

Portable toilets appropriately located

☒ Pass ☐ Action Required

Paved surfaces clear of uncontained potential pollutants (tracking or construction material)

☒ Pass ☐ Action Required

Other control measures, not specifically addressed above, missing, not designed or implemented in accordance with the requirements of the permit and/or not implemented to operate in accordance with its design. Including, but not limited to SWMP narrative and plans and other documentation

☒ Pass ☐ Action Required



**CONTROL MEASURES REQUIRING ROUTINE MAINTENANCE**

Definition: Any control measure that is still operating in accordance with its design and the requirements of the permit, but requires maintenance to prevent a breach of the control measure. These items are not subject to the corrective action requirements as specified in Part I.B.1.c of the permit.

Date Observed	Location	Control Measure	Maintenance Required / Action Taken	Date Completed / Initials
---------------	----------	-----------------	--	------------------------------

**INADEQUATE CONTROL MEASURES REQUIRING CORRECTIVE ACTION**

Definition: Any control measure that is not designed or implemented in accordance with the requirements of the permit and/or any control measure that is not implemented to operate in accordance with its design. This includes control measures that have not been implemented for pollutant sources. If it is infeasible to install or repair the control measure immediately after discovering the deficiency the reason must be documented and a schedule included to return the control measure to effective operating condition as possible.

Date Discovered	Location	Description of Inadequate Control Measure	Description of Corrective Action If deficiency not corrected immediately, reason and schedule to correct	Date Completed / Initials
-----------------	----------	---	--	------------------------------

## CONSTRUCTION STORMWATER SITE INSPECTION REPORT

Facility Name	Erie Commons F4	Permittee	Community Development Group Of Erie Inc
Date of Inspection	01/12/2022	Weather Conditions	Overcast
Permit Certification #	COR413407	Approx. Temperature	41
Phase of Construction	grading and utilites	Disturbed Acreage	12.5 ac
Inspector Name	Adam Buckreis	Inspector Title	Qualified Stormwater Manager

### INSPECTION FREQUENCY - Minimum frequency for each site.

☒ At least one inspection every 7 calendar days

☐ At least one inspection every 14 calendar days

☐ Post-storm event within 24 hours from end of precipitation or snowmelt event that causes surface erosion. Event Date:

☐ Post-storm event at temporarily idle site

☐ Inspections at completed sites

☐ A deviation from the minimum inspection schedule has occurred.  
Describe if deviation occurred:

Changes made to the SWMP since the last inspection or during this inspection:

Exact changes and permit compliance notification noted where change occurred.

☐ Map ☐ Acreage ☐ Schedule ☐ Details ☐ Documentation Added ☐ Active Areas Modified

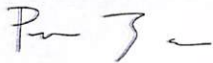
(Per standard industry practices, the act of ordering supplies and/or scheduling the work is the first step in responding to either routine maintenance or corrective actions. Corrective actions identified in this site inspection are being actively worked on as soon as the inspection report is transmitted to the individuals on the permittee's staff or the third party responsible for resolving the item.)

After adequate corrective action(s) and maintenance have been taken, or where a report does not identify any incidents requiring corrective action or maintenance, the individual(s) designated as the Qualified Stormwater Manager, shall sign and certify the below statement:

"I verify that, to the best of my knowledge and belief, all corrective action and maintenance items identified during the inspection are complete, and the site is currently in compliance with the permit."

Peter Zana

Name of Qualified Stormwater Manager



Signature of Qualified Stormwater Manager

Qualified Stormwater Manager

Title of Qualified Stormwater Manager

01/13/2022

Date

Notes/Comments:

**SITE INSPECTION: ROUTINE OPERATIONS AND ROUTINE MAINTAINENCE.**

Are there new potential sources of pollutants on site, since the previous inspection, requiring routine SWMP updates or modified control measure(s)?

☐ Yes ☒ No

Are there areas of the site for which control measures to minimize potential pollutant discharges are required in addition to (or modified from) control measure(s) currently on site?

☐ Yes ☒ No

Is there evidence of, or the potential for, pollutants to potentially leave the construction site boundaries for which routine operations or maintenance can reduce potential discharges from entering the drainage system or discharging to state waters.

☐ Yes ☒ No

Areas of routine operations or maintenance that remain operating in accordance with its design and the requirements of the permit require: Additional or modified control measures to minimize potential discharge(s); maintenance to prevent a breach of the control measure; or control measures to be installed to address upcoming changes in the phase of construction.

Construction site perimeter

☒ Satisfactory ☐ Unsatisfactory

All disturbed areas (including disturbed areas subject to temporary stabilization requirements)

☒ Satisfactory ☐ Unsatisfactory

Designated haul routes, safety or other travel areas.

☒ Satisfactory ☐ Unsatisfactory

Material(s), materials storage areas (including stockpiles), waste storage areas, secondary containment, spill prevention or vehicle maintenance and fueling operations exposed to precipitation

☒ Satisfactory ☐ Unsatisfactory

Locations where stormwater has the potential to discharge offsite including Inlets, outfalls, offsite controls, and detention basins

☒ Satisfactory ☐ Unsatisfactory

Locations where vehicles exit the site / vehicle tracking control

☒ Satisfactory ☐ Unsatisfactory

Concrete washout operations, control measures and cementitious material waste

☒ Satisfactory ☐ Unsatisfactory

Trash, debris and construction waste.

☒ Satisfactory ☐ Unsatisfactory

Portable toilets appropriately located

☒ Satisfactory ☐ Unsatisfactory

Paved surfaces clear of uncontained potential pollutants (tracking or construction materials)

☒ Satisfactory ☐ Unsatisfactory

Other implemented control measures, not specifically addressed above, requiring routine maintenance. Including, but not limited to, SWMP narrative and plans and other documentation.

☒ Satisfactory ☐ Unsatisfactory



## IDENTIFICATION OF INADEQUATE CONTROL MEASURES REQUIRING CORRECTIVE ACTION

Are there new, uncontained, potential sources of pollutants on site since the previous inspection for which control measures need to be implemented?

☐ Yes ☒ No

Is there evidence of pollutants (or potential pollutants) leaving the construction site boundaries, entering the stormwater drainage system or discharging to state waters?

☐ Yes ☒ No

Since the previous inspection have there been any instance of endangerment to health or the environment, bypass or upset conditions (including numeric effluent limit violations) requiring 24-hour notification?

☐ Yes ☒ No

Areas of the site for which new or modified control measures are required to minimize potential discharges, where control measures are not designed or implemented in accordance with the requirements of the permit or control measures are not installed/implemented to operate in accordance with its design:

Construction site perimeter

☒ Pass ☐ Action Required

All disturbed areas (including disturbed areas subject to temporary stabilization requirements)

☒ Pass ☐ Action Required

Designated haul routes, safety or travel areas.

☒ Pass ☐ Action Required

Material(s) materials storage areas (including stockpiles) and waste storage areas, secondary containment, spill prevention or vehicle maintenance and fueling operations exposed to precipitation

☒ Pass ☐ Action Required

Locations where stormwater has the potential to discharge offsite including outfalls, offsite controls, and detention basins.

☐ Pass ☒ Action Required

Locations where vehicles exit the site / vehicle tracking control

☒ Pass ☐ Action Required

Concrete washout operations and/or control measures and cementitious material waste.

☒ Pass ☐ Action Required

Trash, debris and construction waste.

☒ Pass ☐ Action Required

Portable toilets appropriately located

☒ Pass ☐ Action Required

Paved surfaces clear of uncontained potential pollutants (tracking or construction material)

☒ Pass ☐ Action Required

Other control measures, not specifically addressed above, missing, not designed or implemented in accordance with the requirements of the permit and/or not implemented to operate in accordance with its design. Including, but not limited to SWMP narrative and plans and other documentation

☒ Pass ☐ Action Required

**CONTROL MEASURES REQUIRING ROUTINE MAINTENANCE**

Definition: Any control measure that is still operating in accordance with its design and the requirements of the permit, but requires maintenance to prevent a breach of the control measure. These items are not subject to the corrective action requirements as specified in Part I.B.1.c of the permit.

Date Observed	Location	Control Measure	Maintenance Required / Action Taken	Date Completed / Initials
---------------	----------	-----------------	--	------------------------------

**INADEQUATE CONTROL MEASURES REQUIRING CORRECTIVE ACTION**

Definition: Any control measure that is not designed or implemented in accordance with the requirements of the permit and/or any control measure that is not implemented to operate in accordance with its design. This includes control measures that have not been implemented for pollutant sources. If it is infeasible to install or repair the control measure immediately after discovering the deficiency the reason must be documented and a schedule included to return the control measure to effective operating condition as possible.

Date Discovered	Location	Description of Inadequate Control Measure	Description of Corrective Action If deficiency not corrected immediately, reason and schedule to correct	Date Completed / Initials
01/12/2022	ITEM 1	Install Inlet Protection. Straighten back of inlet protection out and install inlet protection in front of blocks		01/13/2022 P.Z.
01/12/2022	ITEM 2	Install Inlet Protection. Straighten back of inlet protection out and install inlet protection in front of blocks		01/13/2022 P.Z.



## Inspection Maps

### Inspection

Site Name: Erie Commons

Customer: Community Development Group  
Of Erie Inc

Permit Number: COR413407

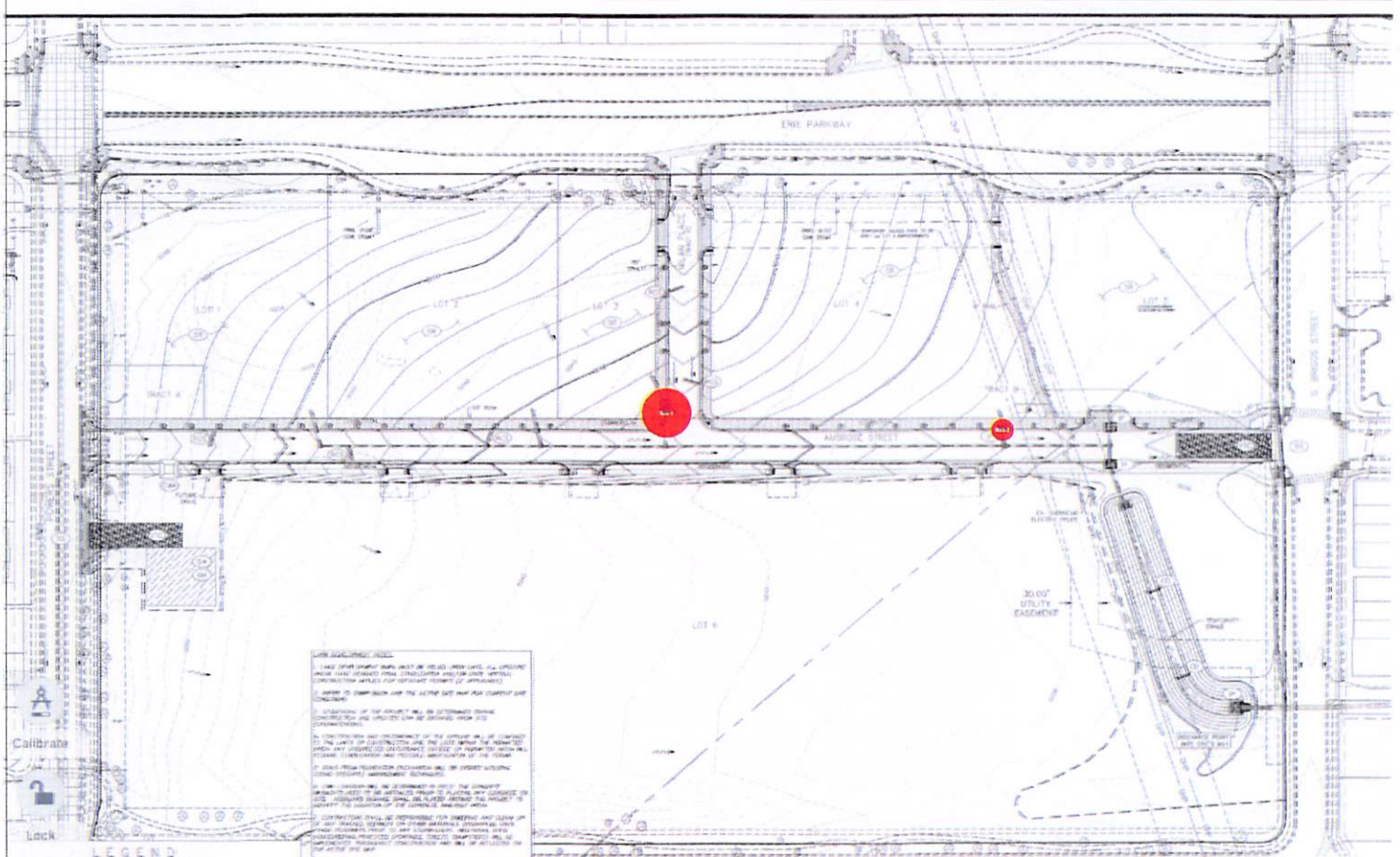
Inspection Type: Routine Weekly

Permit Description: Erie Commons F4

Inspector: Adam Buckreis - Qualified  
Stormwater Manager  
Adam@earthx.us

Inspection Date: 01/12/2022 09:36PM





Color	Title	BMP	Link	Comments	Dates	Permanent
	Item 1	Inlet Protection	22 - Locations where stormwater has the potential to discharge offsite including outfalls, offsite controls, and detention basins.			True



## Inspection Maps

	Item 2	Inlet Protection	22 - Locations where stormwater has the potential to discharge offsite including outfalls, offsite controls, and detention basins.			True
--	--------	------------------	--	--	--	------

## CONSTRUCTION STORMWATER SITE INSPECTION REPORT

Facility Name	Erie Commons F4	Permittee	Community Development Group Of Erie Inc
Date of Inspection	01/19/2022	Weather Conditions	Overcast
Permit Certification #	COR413407	Approx. Temperature	24
Phase of Construction	grading and utilites	Disturbed Acreage	12.5 ac
Inspector Name	Adam Buckreis	Inspector Title	Qualified Stormwater Manager

### INSPECTION FREQUENCY - Minimum frequency for each site.

- ☒ At least one inspection every 7 calendar days
- ☐ At least one inspection every 14 calendar days
- ☐ Post-storm event within 24 hours from end of precipitation or snowmelt event that causes surface erosion. Event Date:
- ☐ Post-storm event at temporarily idle site

☐ Inspections at completed sites

☐ A deviation from the minimum inspection schedule has occurred.  
Describe if deviation occurred:

Changes made to the SWMP since the last inspection or during this inspection:

Exact changes and permit compliance notification noted where change occurred.

☐ Map ☐ Acreage ☐ Schedule ☐ Details ☐ Documentation Added ☐ Active Areas Modified

(Per standard industry practices, the act of ordering supplies and/or scheduling the work is the first step in responding to either routine maintenance or corrective actions. Corrective actions identified in this site inspection are being actively worked on as soon as the inspection report is transmitted to the individuals on the permittee's staff or the third party responsible for resolving the item.)

After adequate corrective action(s) and maintenance have been taken, or where a report does not identify any incidents requiring corrective action or maintenance, the individual(s) designated as the Qualified Stormwater Manager, shall sign and certify the below statement:

"I verify that, to the best of my knowledge and belief, all corrective action and maintenance items identified during the inspection are complete, and the site is currently in compliance with the permit."

Wade Duncan

Name of Qualified Stormwater Manager



Signature of Qualified Stormwater Manager

Project Manager

Title of Qualified Stormwater Manager

01/19/2022

Date

Notes/Comments:



**SITE INSPECTION: ROUTINE OPERATIONS AND ROUTINE MAINTAINENCE.**

Are there new potential sources of pollutants on site, since the previous inspection, requiring routine SWMP updates or modified control measure(s)?

☐ Yes ☒ No

Are there areas of the site for which control measures to minimize potential pollutant discharges are required in addition to (or modified from) control measure(s) currently on site?

☐ Yes ☒ No

Is there evidence of, or the potential for, pollutants to potentially leave the construction site boundaries for which routine operations or maintenance can reduce potential discharges from entering the drainage system or discharging to state waters.

☐ Yes ☒ No

Areas of routine operations or maintenance that remain operating in accordance with its design and the requirements of the permit require: Additional or modified control measures to minimize potential discharge(s); maintenance to prevent a breach of the control measure; or control measures to be installed to address upcoming changes in the phase of construction.

Construction site perimeter

☒ Satisfactory ☐ Unsatisfactory

All disturbed areas (including disturbed areas subject to temporary stabilization requirements)

☒ Satisfactory ☐ Unsatisfactory

Designated haul routes, safety or other travel areas.

☒ Satisfactory ☐ Unsatisfactory

Material(s), materials storage areas (including stockpiles), waste storage areas, secondary containment, spill prevention or vehicle maintenance and fueling operations exposed to precipitation

☒ Satisfactory ☐ Unsatisfactory

Locations where stormwater has the potential to discharge offsite including Inlets, outfalls, offsite controls, and detention basins

☒ Satisfactory ☐ Unsatisfactory

Locations where vehicles exit the site / vehicle tracking control

☒ Satisfactory ☐ Unsatisfactory

Concrete washout operations, control measures and cementitious material waste

☒ Satisfactory ☐ Unsatisfactory

Trash, debris and construction waste.

☒ Satisfactory ☐ Unsatisfactory

Portable toilets appropriately located

☒ Satisfactory ☐ Unsatisfactory

Paved surfaces clear of uncontained potential pollutants (tracking or construction materials)

☒ Satisfactory ☐ Unsatisfactory

Other implemented control measures, not specifically addressed above, requiring routine maintenance. Including, but not limited to, SWMP narrative and plans and other documentation.

☒ Satisfactory ☐ Unsatisfactory

## IDENTIFICATION OF INADEQUATE CONTROL MEASURES REQUIRING CORRECTIVE ACTION

Are there new, uncontained, potential sources of pollutants on site since the previous inspection for which control measures need to be implemented?

☐ Yes ☒ No

Is there evidence of pollutants (or potential pollutants) leaving the construction site boundaries, entering the stormwater drainage system or discharging to state waters?

☐ Yes ☒ No

Since the previous inspection have there been any instance of endangerment to health or the environment, bypass or upset conditions (including numeric effluent limit violations) requiring 24-hour notification?

☐ Yes ☒ No

Areas of the site for which new or modified control measures are required to minimize potential discharges, where control measures are not designed or implemented in accordance with the requirements of the permit or control measures are not installed/implemented to operate in accordance with its design:

Construction site perimeter

☒ Pass ☐ Action Required

All disturbed areas (including disturbed areas subject to temporary stabilization requirements)

☒ Pass ☐ Action Required

Designated haul routes, safety or travel areas.

☒ Pass ☐ Action Required

Material(s) materials storage areas (including stockpiles) and waste storage areas, secondary containment, spill prevention or vehicle maintenance and fueling operations exposed to precipitation

☒ Pass ☐ Action Required

Locations where stormwater has the potential to discharge offsite including outfalls, offsite controls, and detention basins.

☒ Pass ☐ Action Required

Locations where vehicles exit the site / vehicle tracking control

☒ Pass ☐ Action Required

Concrete washout operations and/or control measures and cementitious material waste.

☒ Pass ☐ Action Required

Trash, debris and construction waste.

☒ Pass ☐ Action Required

Portable toilets appropriately located

☒ Pass ☐ Action Required

Paved surfaces clear of uncontained potential pollutants (tracking or construction material)

☒ Pass ☐ Action Required

Other control measures, not specifically addressed above, missing, not designed or implemented in accordance with the requirements of the permit and/or not implemented to operate in accordance with its design. Including, but not limited to SWMP narrative and plans and other documentation

☒ Pass ☐ Action Required

**CONTROL MEASURES REQUIRING ROUTINE MAINTENANCE**

Definition: Any control measure that is still operating in accordance with its design and the requirements of the permit, but requires maintenance to prevent a breach of the control measure. These items are not subject to the corrective action requirements as specified in Part I.B.1.c of the permit.

Date Observed	Location	Control Measure	Maintenance Required / Action Taken	Date Completed / Initials
---------------	----------	-----------------	--	------------------------------

**INADEQUATE CONTROL MEASURES REQUIRING CORRECTIVE ACTION**

Definition: Any control measure that is not designed or implemented in accordance with the requirements of the permit and/or any control measure that is not implemented to operate in accordance with its design. This includes control measures that have not been implemented for pollutant sources. If it is infeasible to install or repair the control measure immediately after discovering the deficiency the reason must be documented and a schedule included to return the control measure to effective operating condition as possible.

Date Discovered	Location	Description of Inadequate Control Measure	Description of Corrective Action If deficiency not corrected immediately, reason and schedule to correct	Date Completed / Initials
-----------------	----------	---	--	------------------------------



## CONSTRUCTION STORMWATER SITE INSPECTION REPORT

Facility Name	Erie Commons F4	Permittee	Community Development Group Of Erie Inc
Date of Inspection	01/26/2022	Weather Conditions	Snow Covered
Permit Certification #	COR413407	Approx. Temperature	48
Phase of Construction	grading and utilites	Disturbed Acreage	12.5 ac
Inspector Name	Adam Buckreis	Inspector Title	Qualified Stormwater Manager

### INSPECTION FREQUENCY - Minimum frequency for each site.

☒ At least one inspection every 7 calendar days

☐ At least one inspection every 14 calendar days

☐ Post-storm event within 24 hours from end of precipitation or snowmelt event that causes surface erosion. Event Date:

☐ Post-storm event at temporarily idle site

☐ Inspections at completed sites

☐ A deviation from the minimum inspection schedule has occurred.  
Describe if deviation occurred:

Changes made to the SWMP since the last inspection or during this inspection:

Exact changes and permit compliance notification noted where change occurred.

☐ Map ☐ Acreage ☐ Schedule ☐ Details ☐ Documentation Added ☐ Active Areas Modified

(Per standard industry practices, the act of ordering supplies and/or scheduling the work is the first step in responding to either routine maintenance or corrective actions. Corrective actions identified in this site inspection are being actively worked on as soon as the inspection report is transmitted to the individuals on the permittee's staff or the third party responsible for resolving the item.)

After adequate corrective action(s) and maintenance have been taken, or where a report does not identify any incidents requiring corrective action or maintenance, the individual(s) designated as the Qualified Stormwater Manager, shall sign and certify the below statement:

"I verify that, to the best of my knowledge and belief, all corrective action and maintenance items identified during the inspection are complete, and the site is currently in compliance with the permit."

Wade Duncan

Name of Qualified Stormwater Manager



Signature of Qualified Stormwater Manager

Project Manager

Title of Qualified Stormwater Manager

01/26/2022

Date

Notes/Comments:

Site is snow covered, low level bmp's not visible.

**SITE INSPECTION: ROUTINE OPERATIONS AND ROUTINE MAINTAINENCE.**

Are there new potential sources of pollutants on site, since the previous inspection, requiring routine SWMP updates or modified control measure(s)?

☐ Yes ☒ No

Are there areas of the site for which control measures to minimize potential pollutant discharges are required in addition to (or modified from) control measure(s) currently on site?

☐ Yes ☒ No

Is there evidence of, or the potential for, pollutants to potentially leave the construction site boundaries for which routine operations or maintenance can reduce potential discharges from entering the drainage system or discharging to state waters.

☐ Yes ☒ No

Areas of routine operations or maintenance that remain operating in accordance with its design and the requirements of the permit require: Additional or modified control measures to minimize potential discharge(s); maintenance to prevent a breach of the control measure; or control measures to be installed to address upcoming changes in the phase of construction.

Construction site perimeter

☒ Satisfactory ☐ Unsatisfactory

All disturbed areas (including disturbed areas subject to temporary stabilization requirements)

☒ Satisfactory ☐ Unsatisfactory

Designated haul routes, safety or other travel areas.

☒ Satisfactory ☐ Unsatisfactory

Material(s), materials storage areas (including stockpiles), waste storage areas, secondary containment, spill prevention or vehicle maintenance and fueling operations exposed to precipitation

☒ Satisfactory ☐ Unsatisfactory

Locations where stormwater has the potential to discharge offsite including Inlets, outfalls, offsite controls, and detention basins

☒ Satisfactory ☐ Unsatisfactory

Locations where vehicles exit the site / vehicle tracking control

☒ Satisfactory ☐ Unsatisfactory

Concrete washout operations, control measures and cementitious material waste

☒ Satisfactory ☐ Unsatisfactory

Trash, debris and construction waste.

☒ Satisfactory ☐ Unsatisfactory

Portable toilets appropriately located

☒ Satisfactory ☐ Unsatisfactory

Paved surfaces clear of uncontained potential pollutants (tracking or construction materials)

☒ Satisfactory ☐ Unsatisfactory

Other implemented control measures, not specifically addressed above, requiring routine maintenance. Including, but not limited to, SWMP narrative and plans and other documentation.

☒ Satisfactory ☐ Unsatisfactory



**IDENTIFICATION OF INADEQUATE CONTROL MEASURES REQUIRING CORRECTIVE ACTION**

Are there new, uncontained, potential sources of pollutants on site since the previous inspection for which control measures need to be implemented?

☐ Yes ☒ No

Is there evidence of pollutants (or potential pollutants) leaving the construction site boundaries, entering the stormwater drainage system or discharging to state waters?

☐ Yes ☒ No

Since the previous inspection have there been any instance of endangerment to health or the environment, bypass or upset conditions (including numeric effluent limit violations) requiring 24-hour notification?

☐ Yes ☒ No

Areas of the site for which new or modified control measures are required to minimize potential discharges, where control measures are not designed or implemented in accordance with the requirements of the permit or control measures are not installed/implemented to operate in accordance with its design:

Construction site perimeter

☒ Pass ☐ Action Required

All disturbed areas (including disturbed areas subject to temporary stabilization requirements)

☒ Pass ☐ Action Required

Designated haul routes, safety or travel areas.

☒ Pass ☐ Action Required

Material(s) materials storage areas (including stockpiles) and waste storage areas, secondary containment, spill prevention or vehicle maintenance and fueling operations exposed to precipitation

☒ Pass ☐ Action Required

Locations where stormwater has the potential to discharge offsite including outfalls, offsite controls, and detention basins.

☒ Pass ☐ Action Required

Locations where vehicles exit the site / vehicle tracking control

☒ Pass ☐ Action Required

Concrete washout operations and/or control measures and cementitious material waste.

☒ Pass ☐ Action Required

Trash, debris and construction waste.

☒ Pass ☐ Action Required

Portable toilets appropriately located

☒ Pass ☐ Action Required

Paved surfaces clear of uncontained potential pollutants (tracking or construction material)

☒ Pass ☐ Action Required

Other control measures, not specifically addressed above, missing, not designed or implemented in accordance with the requirements of the permit and/or not implemented to operate in accordance with its design. Including, but not limited to SWMP narrative and plans and other documentation

☒ Pass ☐ Action Required



**CONTROL MEASURES REQUIRING ROUTINE MAINTENANCE**

Definition: Any control measure that is still operating in accordance with its design and the requirements of the permit, but requires maintenance to prevent a breach of the control measure. These items are not subject to the corrective action requirements as specified in Part I.B.1.c of the permit.

Date Observed	Location	Control Measure	Maintenance Required / Action Taken	Date Completed / Initials
---------------	----------	-----------------	--	------------------------------

**INADEQUATE CONTROL MEASURES REQUIRING CORRECTIVE ACTION**

Definition: Any control measure that is not designed or implemented in accordance with the requirements of the permit and/or any control measure that is not implemented to operate in accordance with its design. This includes control measures that have not been implemented for pollutant sources. If it is infeasible to install or repair the control measure immediately after discovering the deficiency the reason must be documented and a schedule included to return the control measure to effective operating condition as possible.

Date Discovered	Location	Description of Inadequate Control Measure	Description of Corrective Action If deficiency not corrected immediately, reason and schedule to correct	Date Completed / Initials
-----------------	----------	---	--	------------------------------

## CONSTRUCTION STORMWATER SITE INSPECTION REPORT

Facility Name	Erie Commons F4	Permittee	Community Development Group Of Erie Inc
Date of Inspection	02/03/2022	Weather Conditions	Snow Covered
Permit Certification #	COR413407	Approx. Temperature	15
Phase of Construction	grading and utilites	Disturbed Acreage	12.5 ac
Inspector Name	Adam Buckreis	Inspector Title	Qualified Stormwater Manager

### INSPECTION FREQUENCY - Minimum frequency for each site.

- ☒ At least one inspection every 7 calendar days
- ☐ At least one inspection every 14 calendar days
- ☐ Post-storm event within 24 hours from end of precipitation or snowmelt event that causes surface erosion. Event Date:
- ☐ Post-storm event at temporarily idle site
- ☐ Inspections at completed sites
- ☒ A deviation from the minimum inspection schedule has occurred.  
Describe if deviation occurred: Inspection delayed 1 day due to unsafe / restricted travel conditions from snow event.

Changes made to the SWMP since the last inspection or during this inspection:

Exact changes and permit compliance notification noted where change occurred.

☐ Map ☐ Acreage ☐ Schedule ☐ Details ☐ Documentation Added ☐ Active Areas Modified

(Per standard industry practices, the act of ordering supplies and/or scheduling the work is the first step in responding to either routine maintenance or corrective actions. Corrective actions identified in this site inspection are being actively worked on as soon as the inspection report is transmitted to the individuals on the permittee's staff or the third party responsible for resolving the item.)

After adequate corrective action(s) and maintenance have been taken, or where a report does not identify any incidents requiring corrective action or maintenance, the individual(s) designated as the Qualified Stormwater Manager, shall sign and certify the below statement:

"I verify that, to the best of my knowledge and belief, all corrective action and maintenance items identified during the inspection are complete, and the site is currently in compliance with the permit."

Peter Zana

Name of Qualified Stormwater Manager



Signature of Qualified Stormwater Manager

Qualified Stormwater Manager

Title of Qualified Stormwater Manager

02/03/2022

Date

Notes/Comments:

Site is snow covered, low level bmp's not visible.

**SITE INSPECTION: ROUTINE OPERATIONS AND ROUTINE MAINTAINENCE.**

Are there new potential sources of pollutants on site, since the previous inspection, requiring routine SWMP updates or modified control measure(s)?

☐ Yes ☒ No

Are there areas of the site for which control measures to minimize potential pollutant discharges are required in addition to (or modified from) control measure(s) currently on site?

☐ Yes ☒ No

Is there evidence of, or the potential for, pollutants to potentially leave the construction site boundaries for which routine operations or maintenance can reduce potential discharges from entering the drainage system or discharging to state waters.

☐ Yes ☒ No

Areas of routine operations or maintenance that remain operating in accordance with its design and the requirements of the permit require: Additional or modified control measures to minimize potential discharge(s); maintenance to prevent a breach of the control measure; or control measures to be installed to address upcoming changes in the phase of construction.

Construction site perimeter

☒ Satisfactory ☐ Unsatisfactory

All disturbed areas (including disturbed areas subject to temporary stabilization requirements)

☒ Satisfactory ☐ Unsatisfactory

Designated haul routes, safety or other travel areas.

☒ Satisfactory ☐ Unsatisfactory

Material(s), materials storage areas (including stockpiles), waste storage areas, secondary containment, spill prevention or vehicle maintenance and fueling operations exposed to precipitation

☒ Satisfactory ☐ Unsatisfactory

Locations where stormwater has the potential to discharge offsite including Inlets, outfalls, offsite controls, and detention basins

☒ Satisfactory ☐ Unsatisfactory

Locations where vehicles exit the site / vehicle tracking control

☒ Satisfactory ☐ Unsatisfactory

Concrete washout operations, control measures and cementitious material waste

☒ Satisfactory ☐ Unsatisfactory

Trash, debris and construction waste.

☒ Satisfactory ☐ Unsatisfactory

Portable toilets appropriately located

☒ Satisfactory ☐ Unsatisfactory

Paved surfaces clear of uncontained potential pollutants (tracking or construction materials)

☒ Satisfactory ☐ Unsatisfactory

Other implemented control measures, not specifically addressed above, requiring routine maintenance. Including, but not limited to, SWMP narrative and plans and other documentation.

☒ Satisfactory ☐ Unsatisfactory



**IDENTIFICATION OF INADEQUATE CONTROL MEASURES REQUIRING CORRECTIVE ACTION**

Are there new, uncontained, potential sources of pollutants on site since the previous inspection for which control measures need to be implemented?

☐ Yes ☒ No

Is there evidence of pollutants (or potential pollutants) leaving the construction site boundaries, entering the stormwater drainage system or discharging to state waters?

☐ Yes ☒ No

Since the previous inspection have there been any instance of endangerment to health or the environment, bypass or upset conditions (including numeric effluent limit violations) requiring 24-hour notification?

☐ Yes ☒ No

Areas of the site for which new or modified control measures are required to minimize potential discharges, where control measures are not designed or implemented in accordance with the requirements of the permit or control measures are not installed/implemented to operate in accordance with its design:

Construction site perimeter

☒ Pass ☐ Action Required

All disturbed areas (including disturbed areas subject to temporary stabilization requirements)

☒ Pass ☐ Action Required

Designated haul routes, safety or travel areas.

☒ Pass ☐ Action Required

Material(s) materials storage areas (including stockpiles) and waste storage areas, secondary containment, spill prevention or vehicle maintenance and fueling operations exposed to precipitation

☒ Pass ☐ Action Required

Locations where stormwater has the potential to discharge offsite including outfalls, offsite controls, and detention basins.

☒ Pass ☐ Action Required

Locations where vehicles exit the site / vehicle tracking control

☒ Pass ☐ Action Required

Concrete washout operations and/or control measures and cementitious material waste.

☒ Pass ☐ Action Required

Trash, debris and construction waste.

☒ Pass ☐ Action Required

Portable toilets appropriately located

☒ Pass ☐ Action Required

Paved surfaces clear of uncontained potential pollutants (tracking or construction material)

☒ Pass ☐ Action Required

Other control measures, not specifically addressed above, missing, not designed or implemented in accordance with the requirements of the permit and/or not implemented to operate in accordance with its design. Including, but not limited to SWMP narrative and plans and other documentation

☒ Pass ☐ Action Required

**CONTROL MEASURES REQUIRING ROUTINE MAINTENANCE**

Definition: Any control measure that is still operating in accordance with its design and the requirements of the permit, but requires maintenance to prevent a breach of the control measure. These items are not subject to the corrective action requirements as specified in Part I.B.1.c of the permit.

Date Observed	Location	Control Measure	Maintenance Required / Action Taken	Date Completed / Initials
---------------	----------	-----------------	--	------------------------------

**INADEQUATE CONTROL MEASURES REQUIRING CORRECTIVE ACTION**

Definition: Any control measure that is not designed or implemented in accordance with the requirements of the permit and/or any control measure that is not implemented to operate in accordance with its design. This includes control measures that have not been implemented for pollutant sources. If it is infeasible to install or repair the control measure immediately after discovering the deficiency the reason must be documented and a schedule included to return the control measure to effective operating condition as possible.

Date Discovered	Location	Description of Inadequate Control Measure	Description of Corrective Action If deficiency not corrected immediately, reason and schedule to correct	Date Completed / Initials
-----------------	----------	---	--	------------------------------

## CONSTRUCTION STORMWATER SITE INSPECTION REPORT

Facility Name	Erie Commons F4	Permittee	Community Development Group Of Erie Inc
Date of Inspection	02/09/2022	Weather Conditions	Sunny
Permit Certification #	COR413407	Approx. Temperature	58
Phase of Construction	grading and utilites	Disturbed Acreage	9.2 ac
Inspector Name	Adam Buckreis	Inspector Title	Qualified Stormwater Manager

### INSPECTION FREQUENCY - Minimum frequency for each site.

☒ At least one inspection every 7 calendar days

☐ At least one inspection every 14 calendar days

☐ Post-storm event within 24 hours from end of precipitation or snowmelt event that causes surface erosion. Event Date:

☐ Post-storm event at temporarily idle site

☐ Inspections at completed sites

☐ A deviation from the minimum inspection schedule has occurred.  
Describe if deviation occurred:

Changes made to the SWMP since the last inspection or during this inspection:

Exact changes and permit compliance notification noted where change occurred.

☐ Map ☒ Acreage ☐ Schedule ☐ Details ☐ Documentation Added ☐ Active Areas Modified

(Per standard industry practices, the act of ordering supplies and/or scheduling the work is the first step in responding to either routine maintenance or corrective actions. Corrective actions identified in this site inspection are being actively worked on as soon as the inspection report is transmitted to the individuals on the permittee's staff or the third party responsible for resolving the item.)

After adequate corrective action(s) and maintenance have been taken, or where a report does not identify any incidents requiring corrective action or maintenance, the individual(s) designated as the Qualified Stormwater Manager, shall sign and certify the below statement:

"I verify that, to the best of my knowledge and belief, all corrective action and maintenance items identified during the inspection are complete, and the site is currently in compliance with the permit."

\_\_\_\_\_  
Name of Qualified Stormwater Manager

\_\_\_\_\_  
Title of Qualified Stormwater Manager

\_\_\_\_\_  
Signature of Qualified Stormwater Manager

\_\_\_\_\_  
Date

Notes/Comments:



**SITE INSPECTION: ROUTINE OPERATIONS AND ROUTINE MAINTAINENCE.**

Are there new potential sources of pollutants on site, since the previous inspection, requiring routine SWMP updates or modified control measure(s)?

☐ Yes ☒ No

Are there areas of the site for which control measures to minimize potential pollutant discharges are required in addition to (or modified from) control measure(s) currently on site?

☐ Yes ☒ No

Is there evidence of, or the potential for, pollutants to potentially leave the construction site boundaries for which routine operations or maintenance can reduce potential discharges from entering the drainage system or discharging to state waters.

☐ Yes ☒ No

Areas of routine operations or maintenance that remain operating in accordance with its design and the requirements of the permit require: Additional or modified control measures to minimize potential discharge(s); maintenance to prevent a breach of the control measure; or control measures to be installed to address upcoming changes in the phase of construction.

Construction site perimeter

☒ Satisfactory ☐ Unsatisfactory

All disturbed areas (including disturbed areas subject to temporary stabilization requirements)

☒ Satisfactory ☐ Unsatisfactory

Designated haul routes, safety or other travel areas.

☒ Satisfactory ☐ Unsatisfactory

Material(s), materials storage areas (including stockpiles), waste storage areas, secondary containment, spill prevention or vehicle maintenance and fueling operations exposed to precipitation

☒ Satisfactory ☐ Unsatisfactory

Locations where stormwater has the potential to discharge offsite including Inlets, outfalls, offsite controls, and detention basins

☒ Satisfactory ☐ Unsatisfactory

Locations where vehicles exit the site / vehicle tracking control

☒ Satisfactory ☐ Unsatisfactory

Concrete washout operations, control measures and cementitious material waste

☒ Satisfactory ☐ Unsatisfactory

Trash, debris and construction waste.

☒ Satisfactory ☐ Unsatisfactory

Portable toilets appropriately located

☒ Satisfactory ☐ Unsatisfactory

Paved surfaces clear of uncontained potential pollutants (tracking or construction materials)

☐ Satisfactory ☒ Unsatisfactory

Other implemented control measures, not specifically addressed above, requiring routine maintenance. Including, but not limited to, SWMP narrative and plans and other documentation.

☒ Satisfactory ☐ Unsatisfactory

**IDENTIFICATION OF INADEQUATE CONTROL MEASURES REQUIRING CORRECTIVE ACTION**

Are there new, uncontained, potential sources of pollutants on site since the previous inspection for which control measures need to be implemented?

☐ Yes ☒ No

Is there evidence of pollutants (or potential pollutants) leaving the construction site boundaries, entering the stormwater drainage system or discharging to state waters?

☐ Yes ☒ No

Since the previous inspection have there been any instance of endangerment to health or the environment, bypass or upset conditions (including numeric effluent limit violations) requiring 24-hour notification?

☐ Yes ☒ No

Areas of the site for which new or modified control measures are required to minimize potential discharges, where control measures are not designed or implemented in accordance with the requirements of the permit or control measures are not installed/implemented to operate in accordance with its design:

Construction site perimeter

☒ Pass ☐ Action Required

All disturbed areas (including disturbed areas subject to temporary stabilization requirements)

☒ Pass ☐ Action Required

Designated haul routes, safety or travel areas.

☒ Pass ☐ Action Required

Material(s) materials storage areas (including stockpiles) and waste storage areas, secondary containment, spill prevention or vehicle maintenance and fueling operations exposed to precipitation

☒ Pass ☐ Action Required

Locations where stormwater has the potential to discharge offsite including outfalls, offsite controls, and detention basins.

☒ Pass ☐ Action Required

Locations where vehicles exit the site / vehicle tracking control

☒ Pass ☐ Action Required

Concrete washout operations and/or control measures and cementitious material waste.

☒ Pass ☐ Action Required

Trash, debris and construction waste.

☒ Pass ☐ Action Required

Portable toilets appropriately located

☒ Pass ☐ Action Required

Paved surfaces clear of uncontained potential pollutants (tracking or construction material)

☒ Pass ☐ Action Required

Other control measures, not specifically addressed above, missing, not designed or implemented in accordance with the requirements of the permit and/or not implemented to operate in accordance with its design. Including, but not limited to SWMP narrative and plans and other documentation

☒ Pass ☐ Action Required

**CONTROL MEASURES REQUIRING ROUTINE MAINTENANCE**

Definition: Any control measure that is still operating in accordance with its design and the requirements of the permit, but requires maintenance to prevent a breach of the control measure. These items are not subject to the corrective action requirements as specified in Part I.B.1.c of the permit.

Date Observed	Location	Control Measure	Maintenance Required / Action Taken	Date Completed / Initials
02/09/2022	ITEM 1	Paved Surfaces	Sweep.	

**INADEQUATE CONTROL MEASURES REQUIRING CORRECTIVE ACTION**

Definition: Any control measure that is not designed or implemented in accordance with the requirements of the permit and/or any control measure that is not implemented to operate in accordance with its design. This includes control measures that have not been implemented for pollutant sources. If it is infeasible to install or repair the control measure immediately after discovering the deficiency the reason must be documented and a schedule included to return the control measure to effective operating condition as possible.

Date Discovered	Location	Description of Inadequate Control Measure	Description of Corrective Action If deficiency not corrected immediately, reason and schedule to correct	Date Completed / Initials
-----------------	----------	---	--	---------------------------





## Inspection Maps

### Inspection

Site Name: Erie Commons

Customer: Community Development Group  
Of Erie Inc

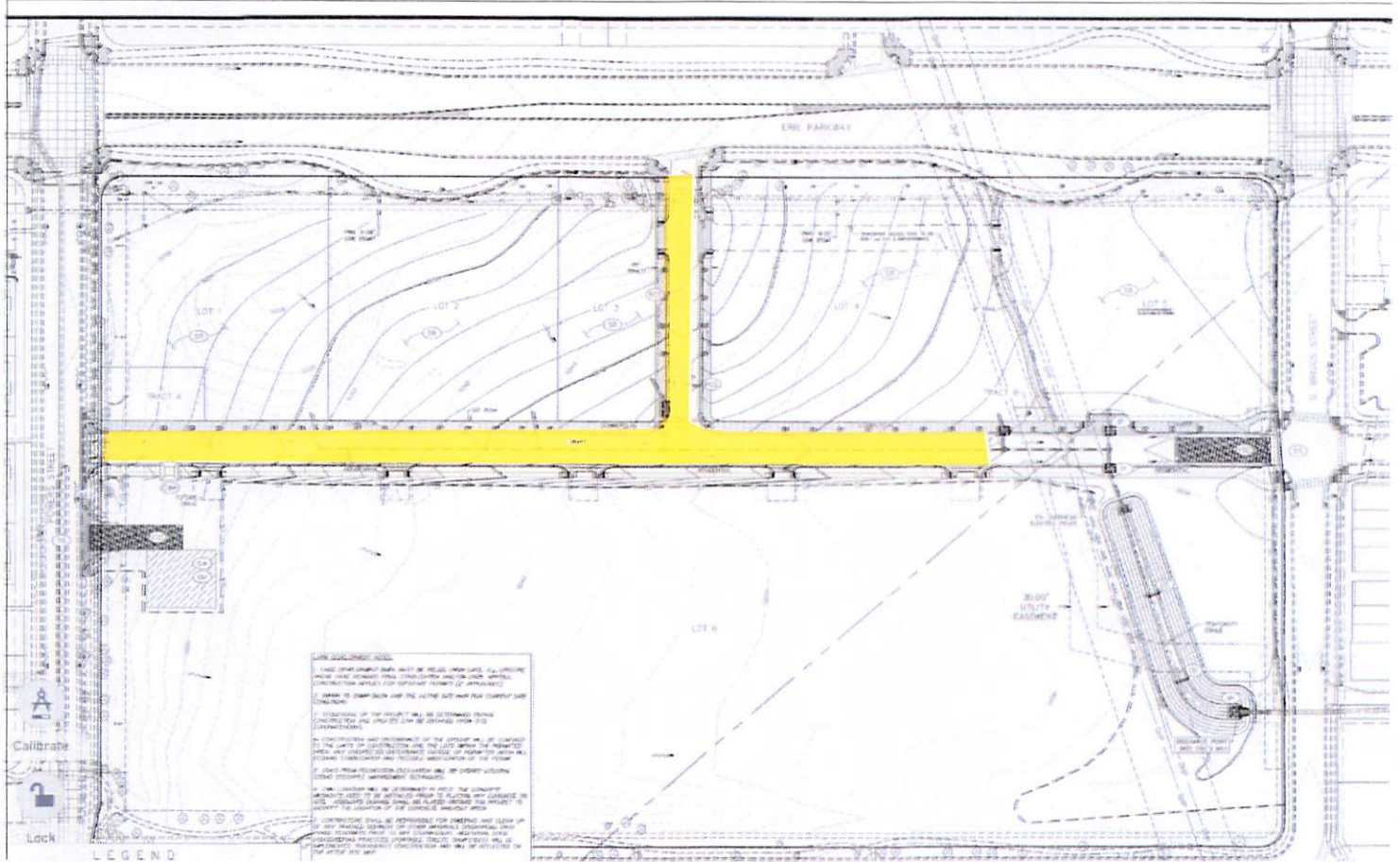
Permit Number: COR413407

Inspection Type: Routine Weekly

Permit Description: Erie Commons F4

Inspector: Adam Buckreis - Qualified  
Stormwater Manager  
Adam@earthx.us

Inspection Date: 02/09/2022 12:04PM



Color	Title	BMP	Link	Comments	Dates	Permanent
Yellow	Item 1	Paved Surfaces	13 - Paved surfaces clear of uncontained potential pollutants (tracking or construction materials)			False