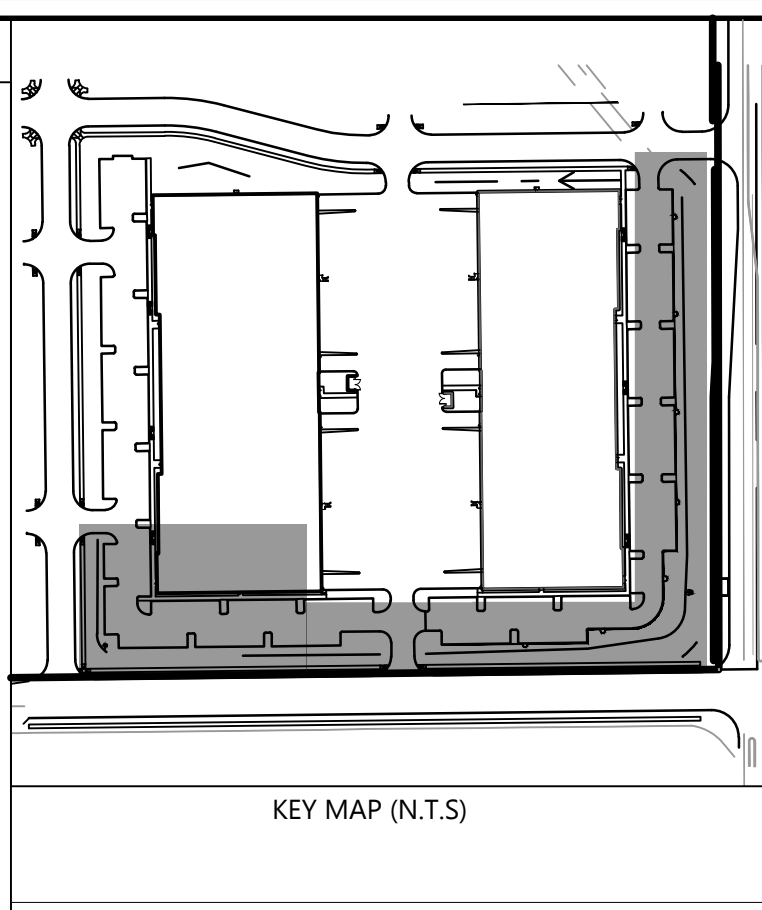
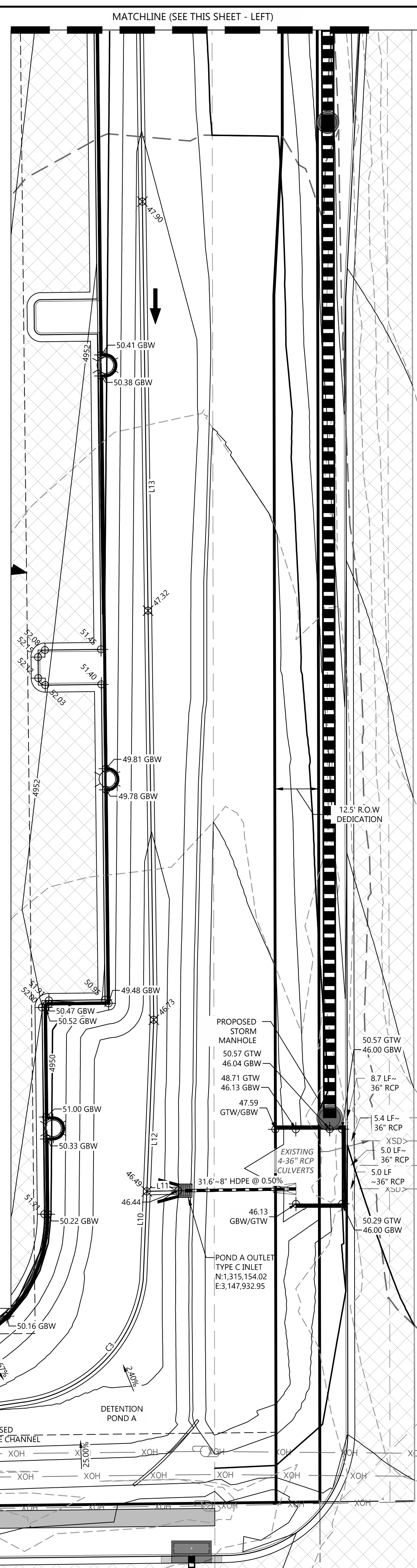
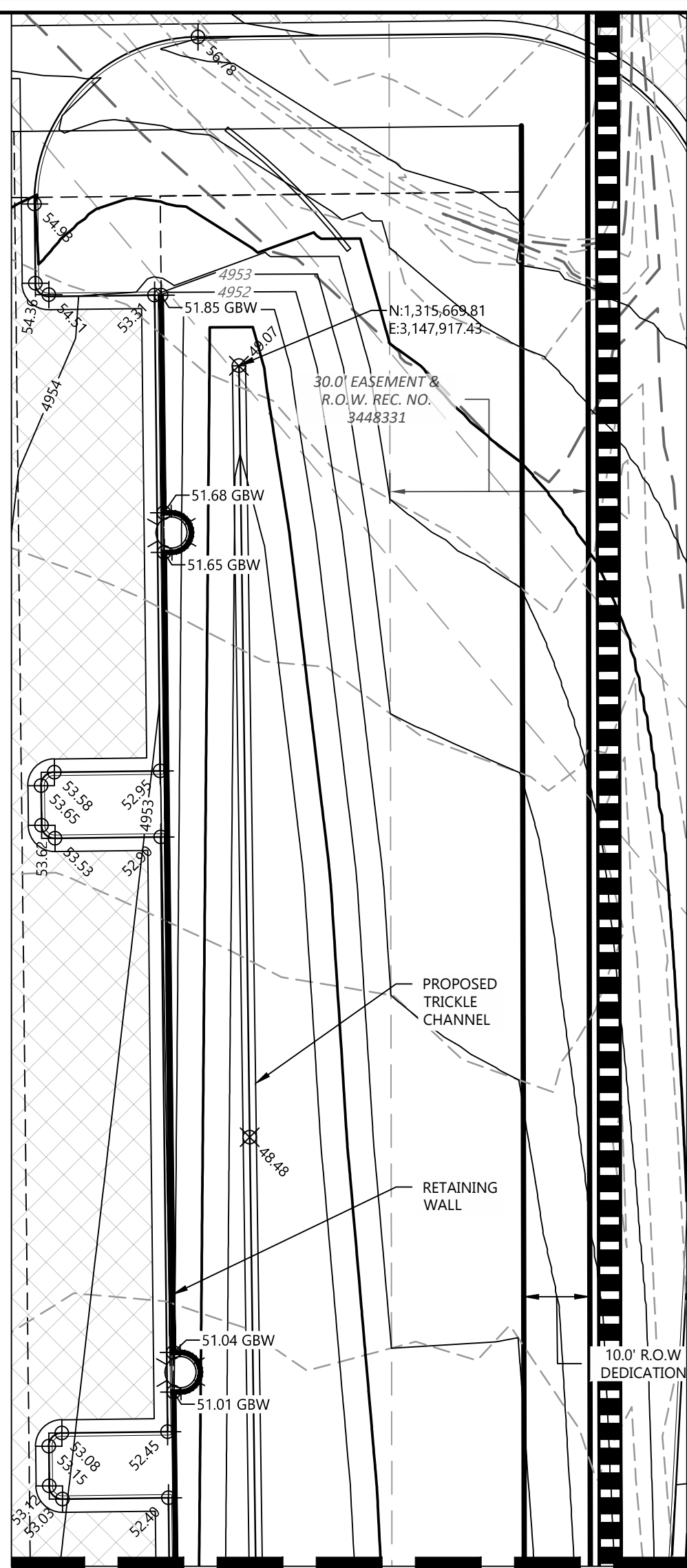
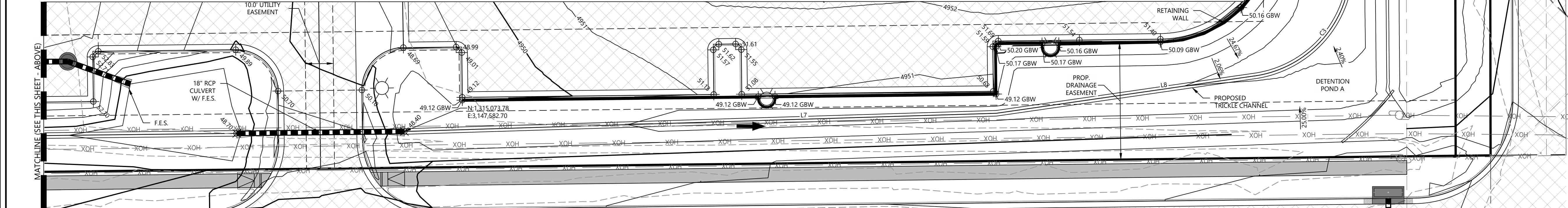


LINE TABLE		
LINE No.	LENGTH	DIRECTION
L1	39.13'	N80° 26' 43"E
L2	56.08'	N71° 44' 56"W
L3	122.63'	S0° 10' 19"W
L5	7.69'	N15° 37' 16"E
L6	178.98'	N89° 20' 48"E
L7	211.92'	N88° 14' 15"E
L8	93.40'	N81° 45' 10"E
L10	25.11'	N2° 20' 08"E
L11	9.02'	N88° 35' 33"E
L12	49.02'	S2° 20' 08"W
L13	467.05'	S0° 48' 13"E



SEE SHEET C1.0 & C1.1 FOR LEGEND AND GENERAL NOTES

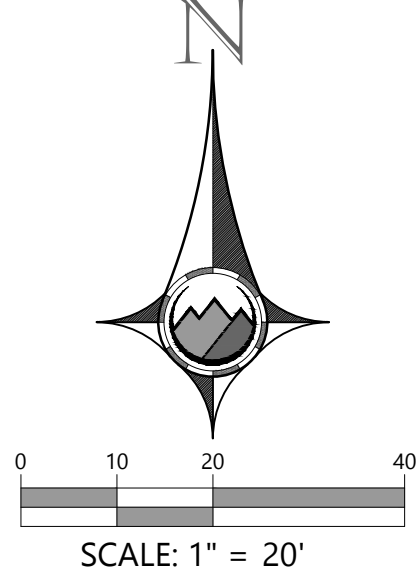
- BENCHMARK:**
- A GPS DERIVED ELEVATION WAS ESTABLISHED AT AN ONSITE BENCHMARK NEAR THE NORTH PROPERTY LINE OF SUBJECT PROPERTY, BEING A SET #4 REBAR WITH 1" PINK PLASTIC CAP "FLATIRON CONTROL" WITH AN ELEVATION OF 4965.65 FEET. A CHECK SHOT, 0.1%, WAS TAKEN ON NGS POINT P-329, BEING A BENCHMARK DISK ON CONCRETE MONUMENT LOCATED 0.8 MILES FROM SITE WITH A PUBLISHED ELEVATION OF 4953.57 FEET (NAVD88). NO DIFFERENTIAL LEVELING WAS PERFORMED TO ESTABLISH THIS ELEVATION.
- NOTES:**
- SPOT ELEVATION VALUES ARE BASED ON THE COLORADO STATE PLANE COORDINATE SYSTEM, NORTH AMERICAN DATUM 1983 (NAD 83), WITH THE TWO LEADING DIGITS TRUNCATED (ADD 4900'), AND DO NOT RELATE TO ARCHITECTURAL ELEVATIONS RELATIVE TO FINISHED FLOOR (I.E. +100'-0").
 - UNLESS SPECIFICALLY SHOWN OTHERWISE, ALL SIDEWALKS TO SLOPE 1.8% AWAY FROM BUILDINGS OR STRUCTURES TOWARD PARKING LOTS, DRIVE LANES, ROADS OR LOW POINTS.
 - UNLESS SPECIFICALLY SHOWN OTHERWISE, ALL PROPOSED WALKS AND TRAILS SHALL BE ADA ACCESSIBLE WITH A MAXIMUM LONGITUDINAL SLOPE OF 5.0%.
 - ALL GRADING SHALL CONFORM WITH THE GEOTECHNICAL RECOMMENDATIONS FROM THE CURRENT GEOTECHNICAL STUDY FOR THIS PROJECT.
 - PROPOSED ACCESSIBLE PARKING SPOTS SHALL HAVE 2.0% MAX SLOPE IN ANY DIRECTION.
 - ALL ELEVATION SPOTS ALONG CURB INDICATE FLOWLINE ELEVATION UNLESS OTHERWISE NOTED.
 - TOP OF RETAINING WALL IS TO BE FLUSH WITH BACK OF CURB.
 - MAXIMUM FINISHED GRADES SHALL BE 4:1 (H:V).
 - THE CONTRACTOR IS RESPONSIBLE TO LOCATE ALL EXISTING UTILITIES ONSITE PRIOR TO CONSTRUCTION AND PROTECT OR RELOCATE ALL EXISTING UTILITIES DURING GRADING OPERATIONS. THIS PLAN DOES NOT CONSTITUTE A UTILITY LOCATE.
 - THE CONTRACTOR SHALL NOTIFY THE ENGINEER IMMEDIATELY OF ANY DISCREPANCIES WITH THESE PLANS.



TOWN OF MEAD APPROVAL
THESE PLANS ARE HEREBY APPROVED FOR ONE YEAR FROM DATE OF THE TOWN ENGINEER'S APPROVAL

APPROVED BY: _____ DATE: _____

TOWN ENGINEER _____



PROOF CIVIL
consulting engineers
600 Grant Street | Suite 210 | Denver, CO

SEAL: _____

FOR AND ON BEHALF OF PROOF CIVIL CO.

REVISIONS		NO.		DATE		DESCRIPTION	

PROJ. NO.: 21029

DATE: 8/25/2021

DRAWN BY: _____

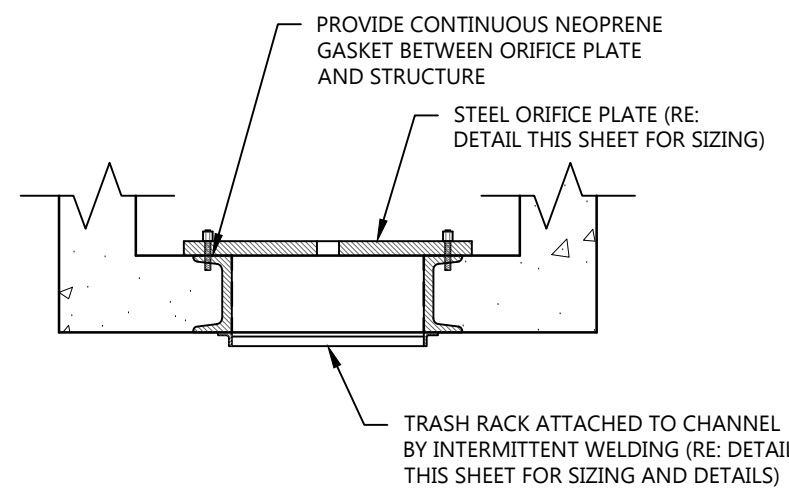
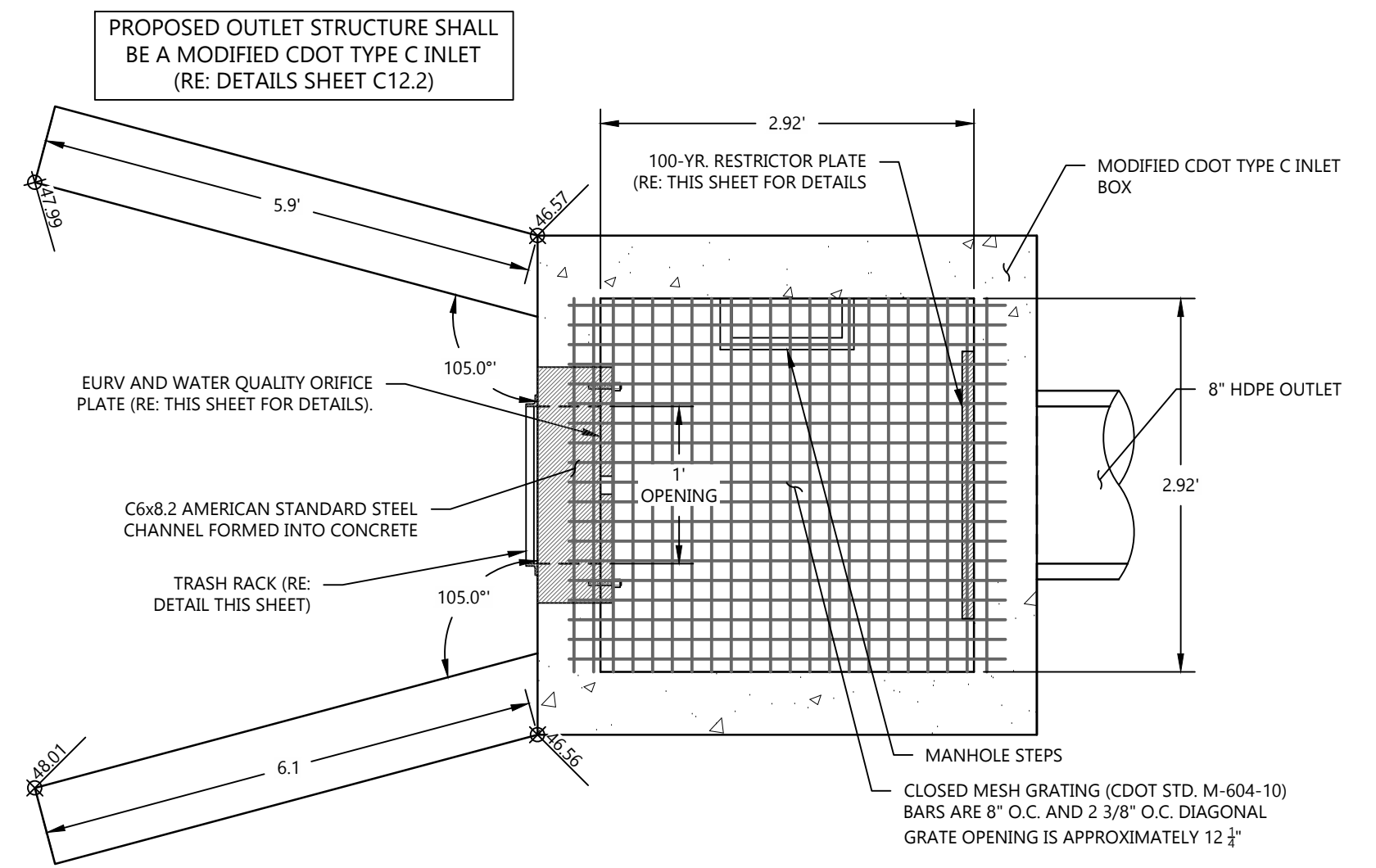
CHECKED BY: _____

POND A & B PLANS
DETENTION POND A & B

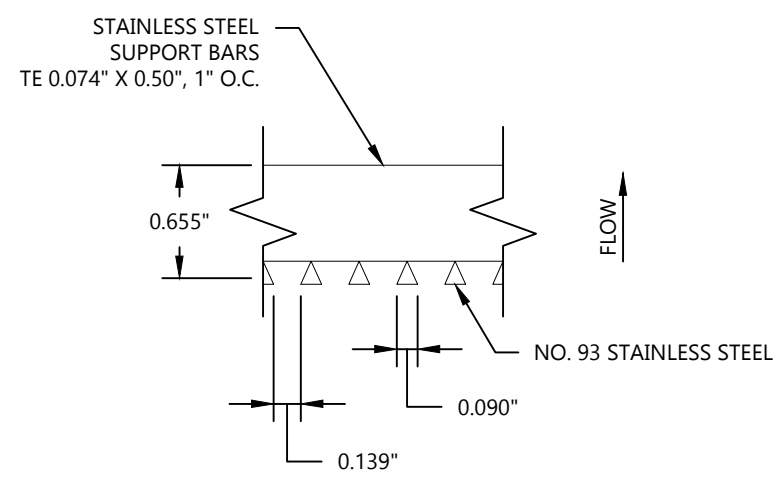
ELEVATION 25 - PHASE 1
CIVIL CONSTRUCTION DRAWINGS

MEAD

DRAWING NO. C6.0



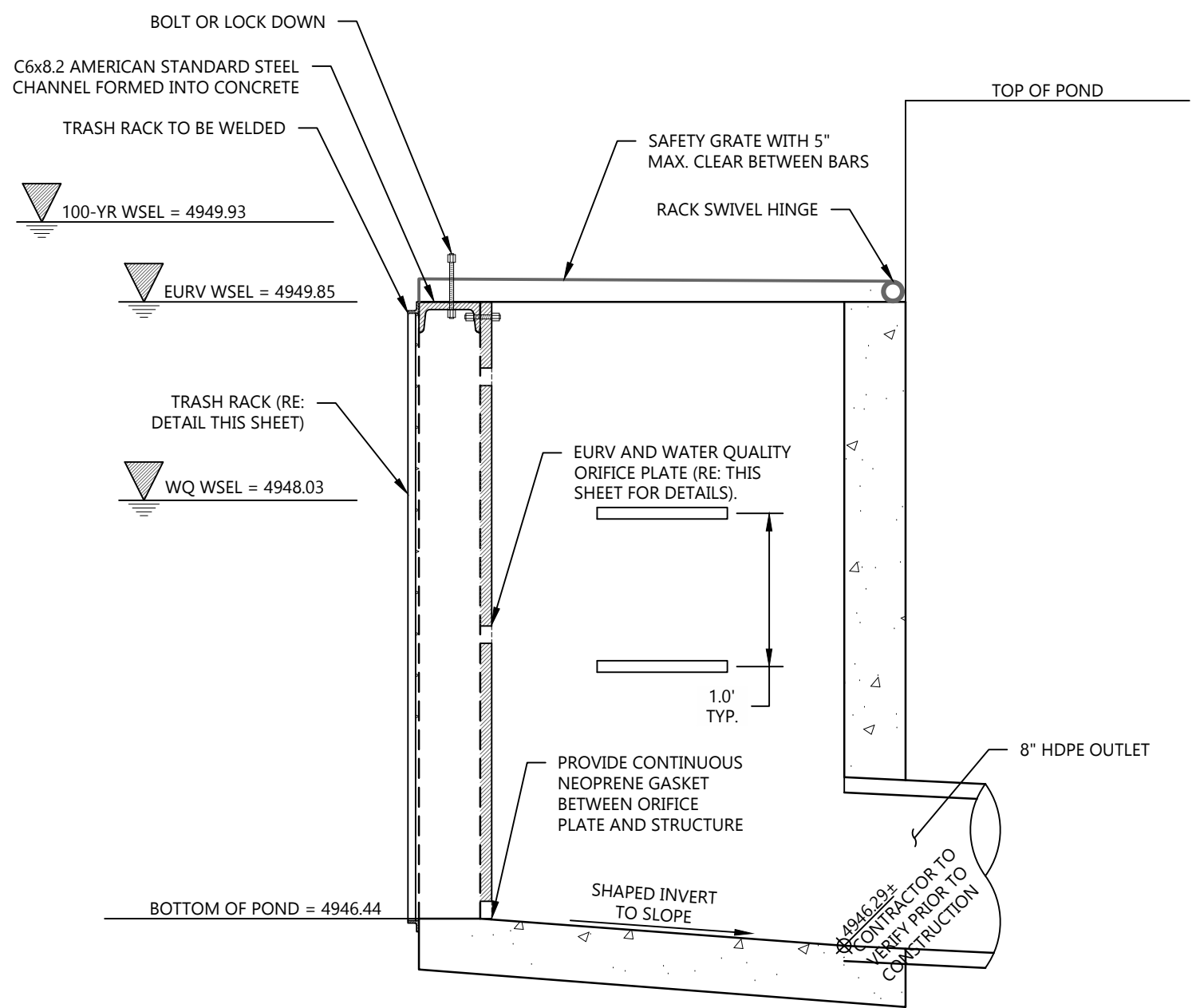
OUTLET STRUCTURE OPENING DETAIL
SCALE: N.T.S.



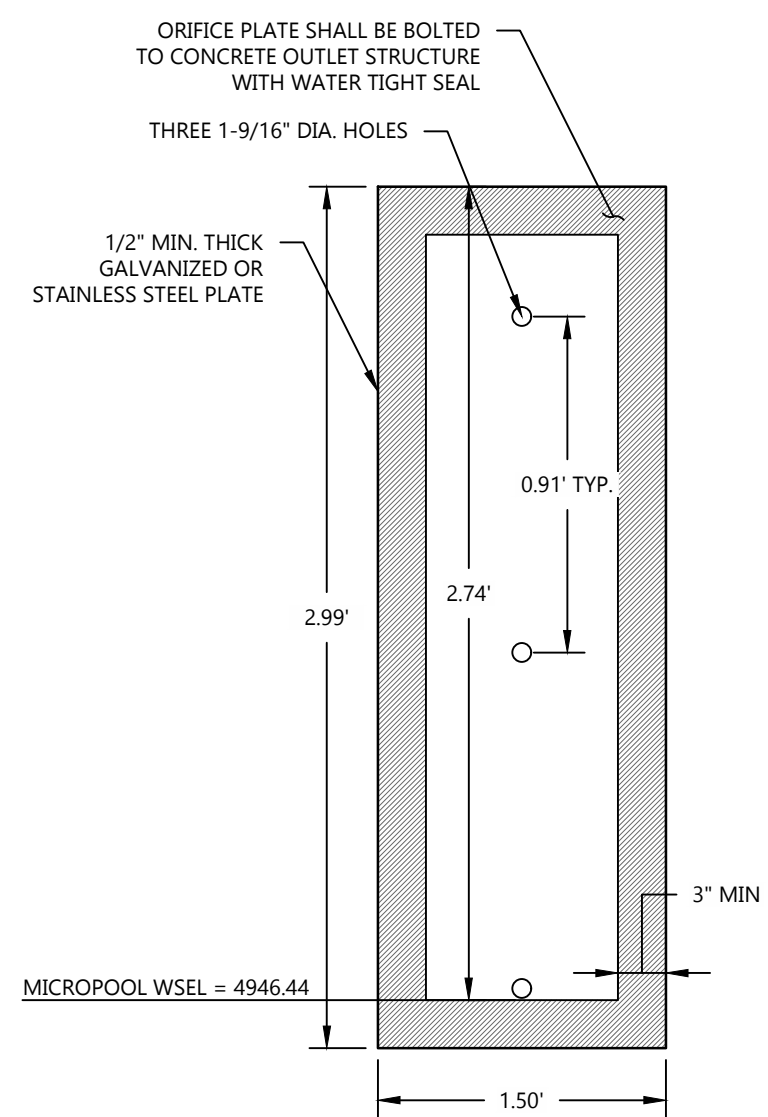
DIMENSIONS OF TRASH RACK WITHIN THE MOUNTING
FRAME = 23 INCHES WIDE X 60 INCHES HIGH

- ORDERING SPECIFICATION:
- 0.139" OPENINGS BETWEEN WIRES
 - TE 0.0074" X 0.75" SUPPORT RODS ON 1" SPACING (O.C.)
 - TOTAL SCREEN THICKNESS = 1.03"
 - #93 VEE WIRE

TRASH RACK DETAIL
SCALE: N.T.S.



OUTLET STRUCTURE SECTION
SCALE: N.T.S.



ORIFICE PLATE
SCALE: N.T.S.

TOWN OF MEAD APPROVAL
THESE PLANS ARE HEREBY APPROVED FOR ONE YEAR FROM DATE OF THE TOWN ENGINEER'S APPROVAL

APPROVED BY: _____ DATE _____

TOWN ENGINEER _____

600 Grant Street | Suite 210 | Denver, CO

SEAL:

FOR AND ON BEHALF OF PROOF CIVIL CO.

REVISIONS		NO.		DATE		DESCRIPTION	

PROJ. NO.: 21029

DATE: 8/25/2021

DRAWN BY: _____

CHECKED BY: _____

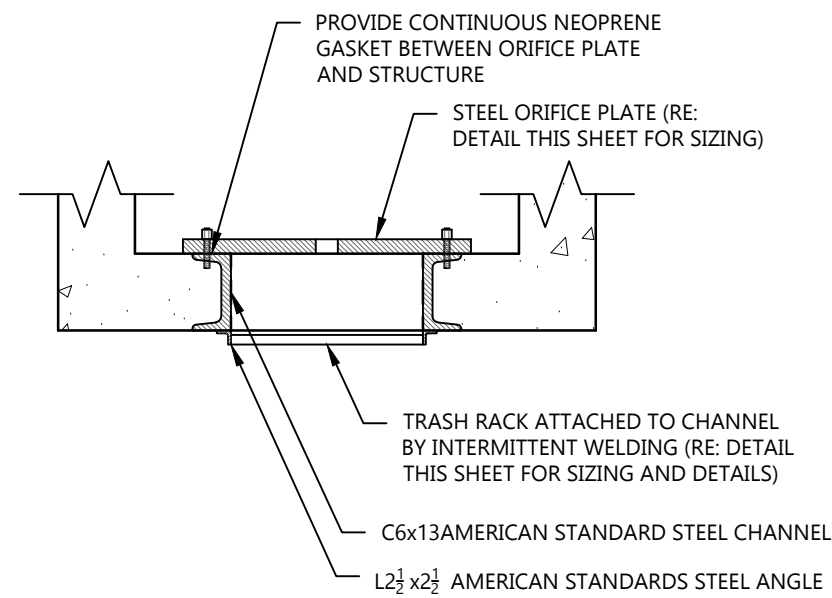
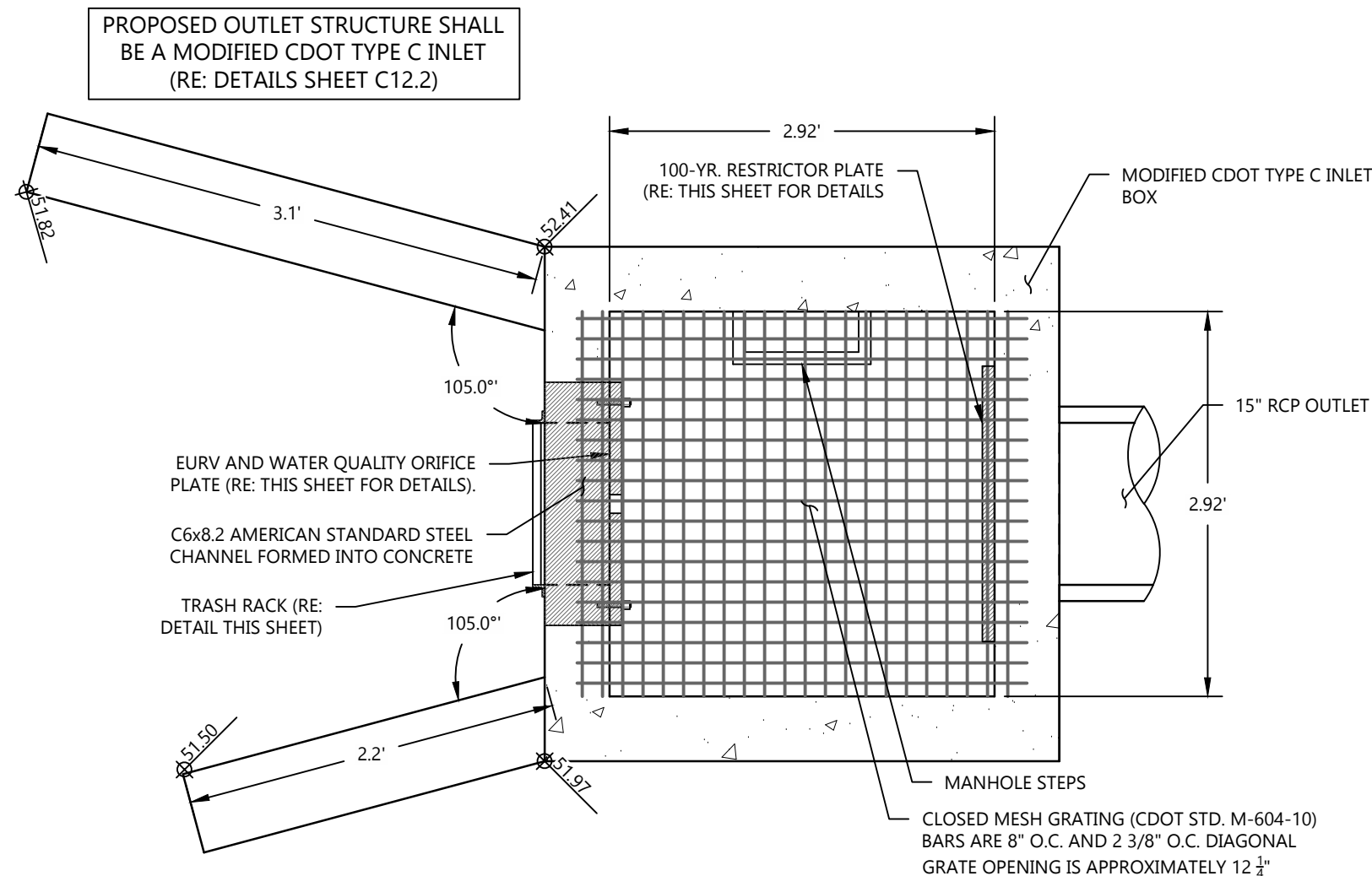
POND A DETAIL
DETENTION POND A

ELEVATION 25 - PHASE 1
CIVIL CONSTRUCTION DRAWINGS

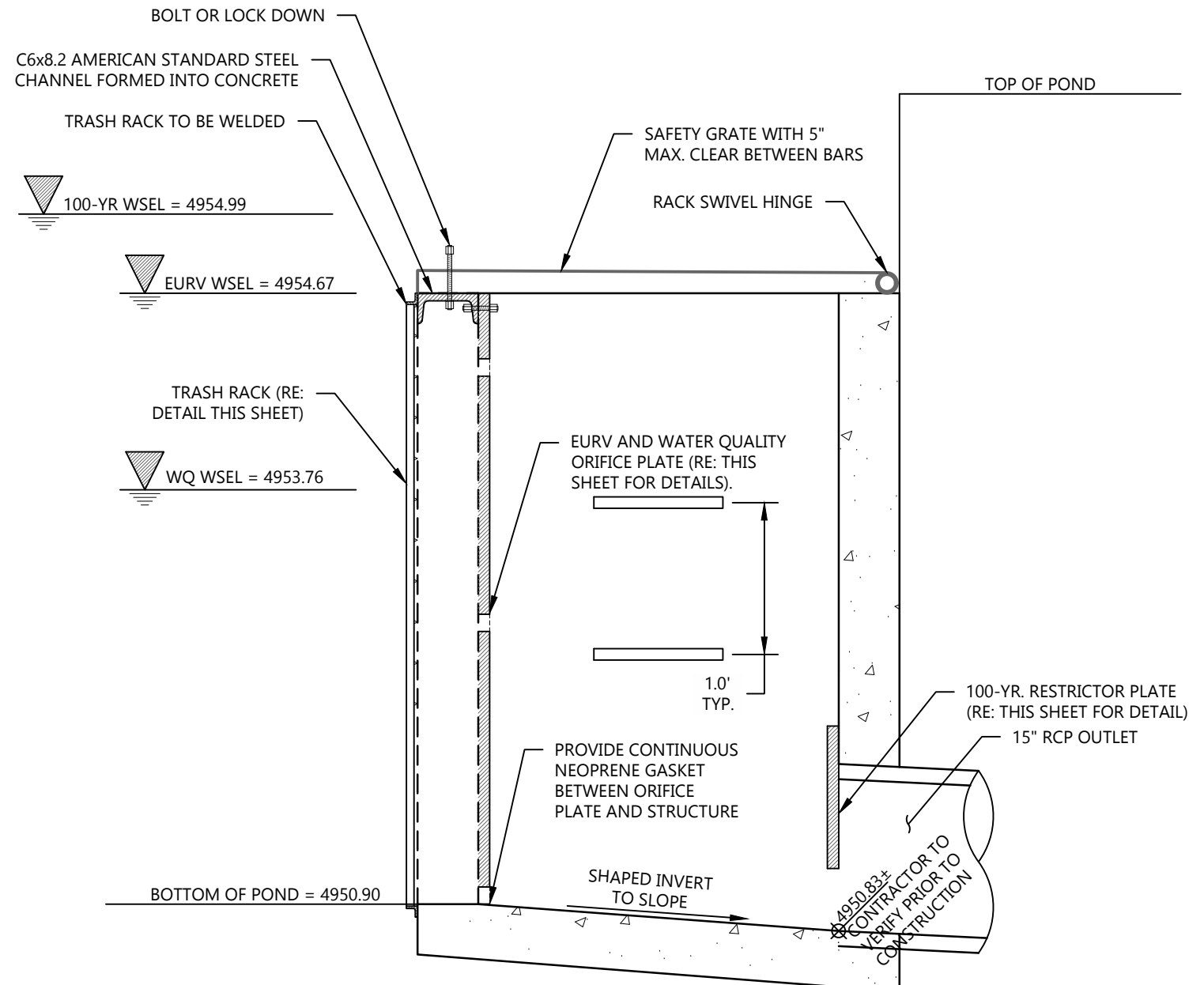
MEAD

CO

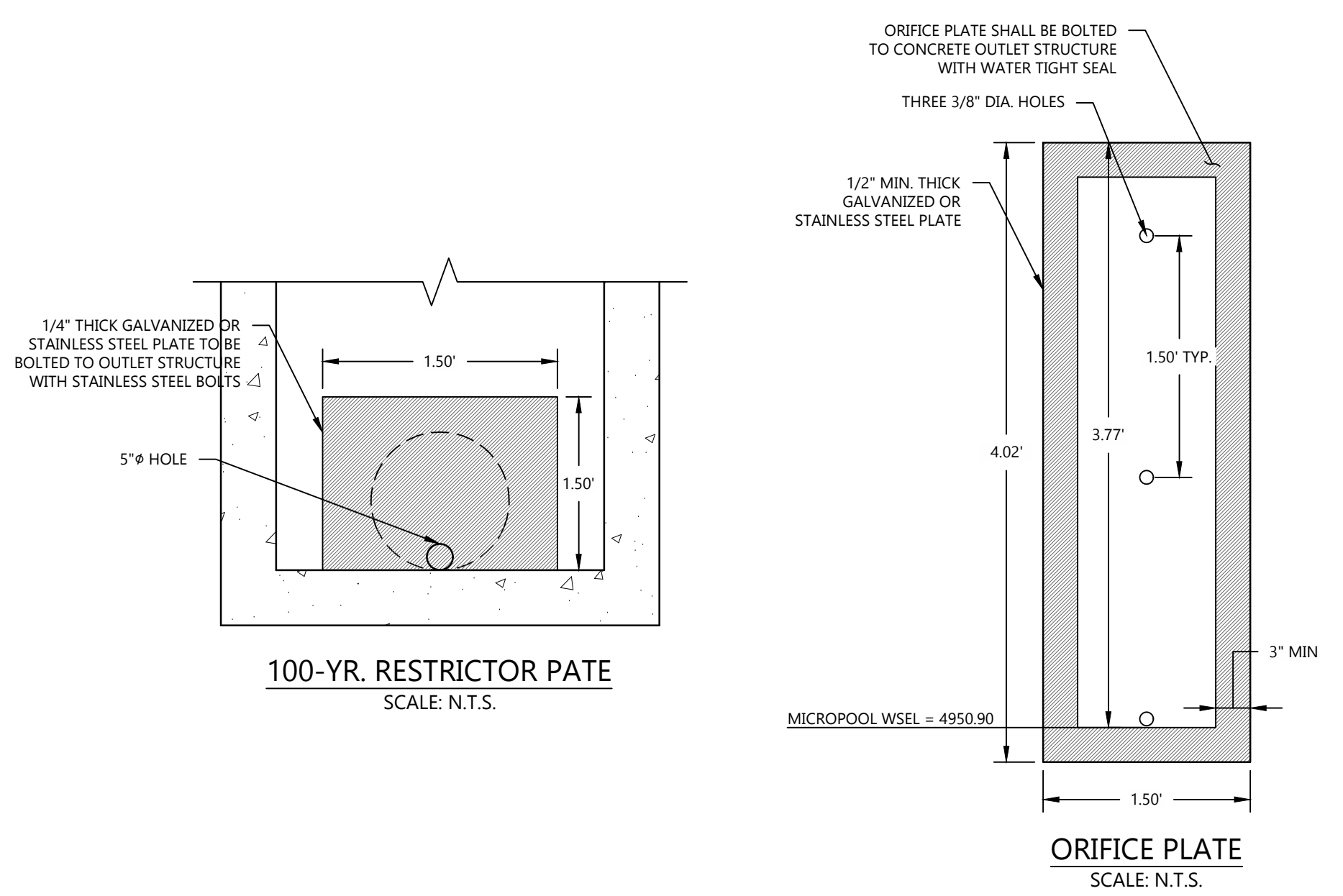
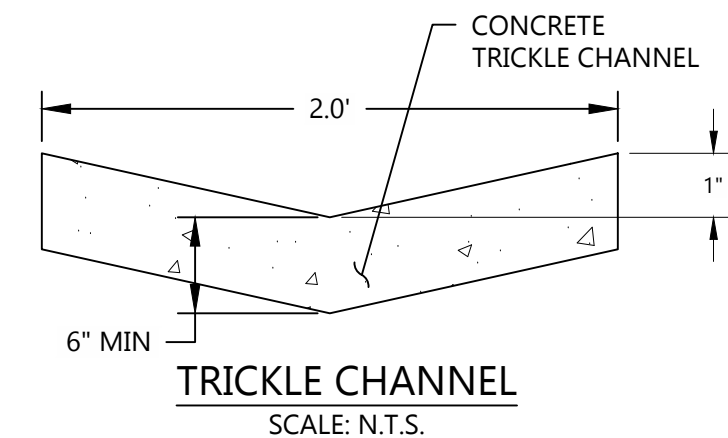
DRAWING NO. C6.1



OUTLET STRUCTURE OPENING DETAIL
SCALE: N.T.S.



OUTLET STRUCTURE SECTION
SCALE: N.T.S.



TOWN OF MEAD APPROVAL
THESE PLANS ARE HEREBY APPROVED FOR ONE YEAR FROM DATE OF THE TOWN ENGINEER'S APPROVAL

APPROVED BY: _____
TOWN ENGINEER

DATE _____

PROOF CIVIL
consulting engineers
600 Grant Street | Suite 210 | Denver, CO

SEAL:

FOR AND ON BEHALF OF PROOF CIVIL CO.

REVISIONS	
NO.	DESCRIPTION

PROJ. NO.:	21029
DATE	8/25/2021
DRAWN BY:	
CHECKED BY:	

POND B DETAIL
DETENTION POND B

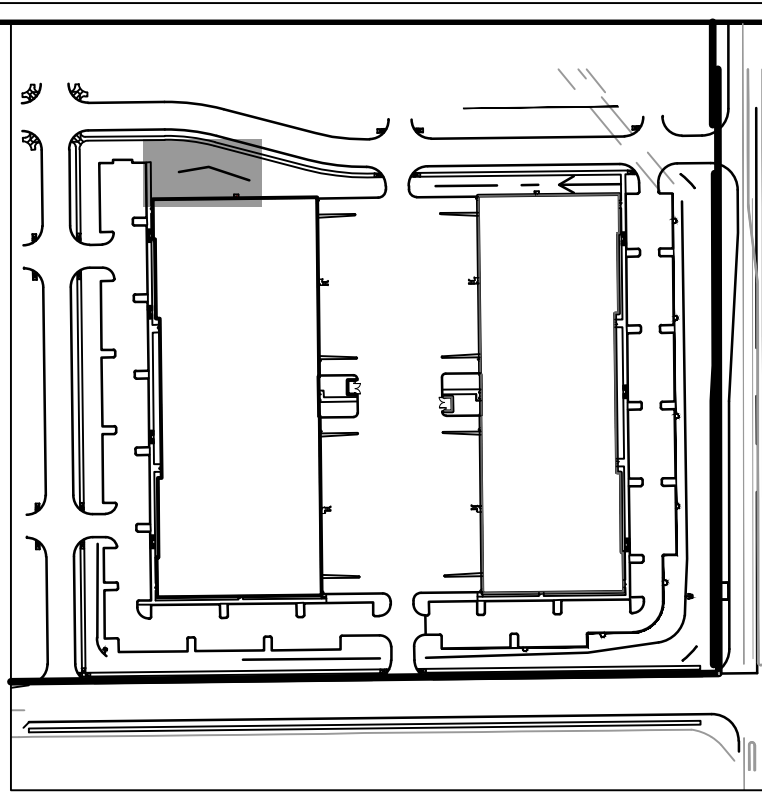
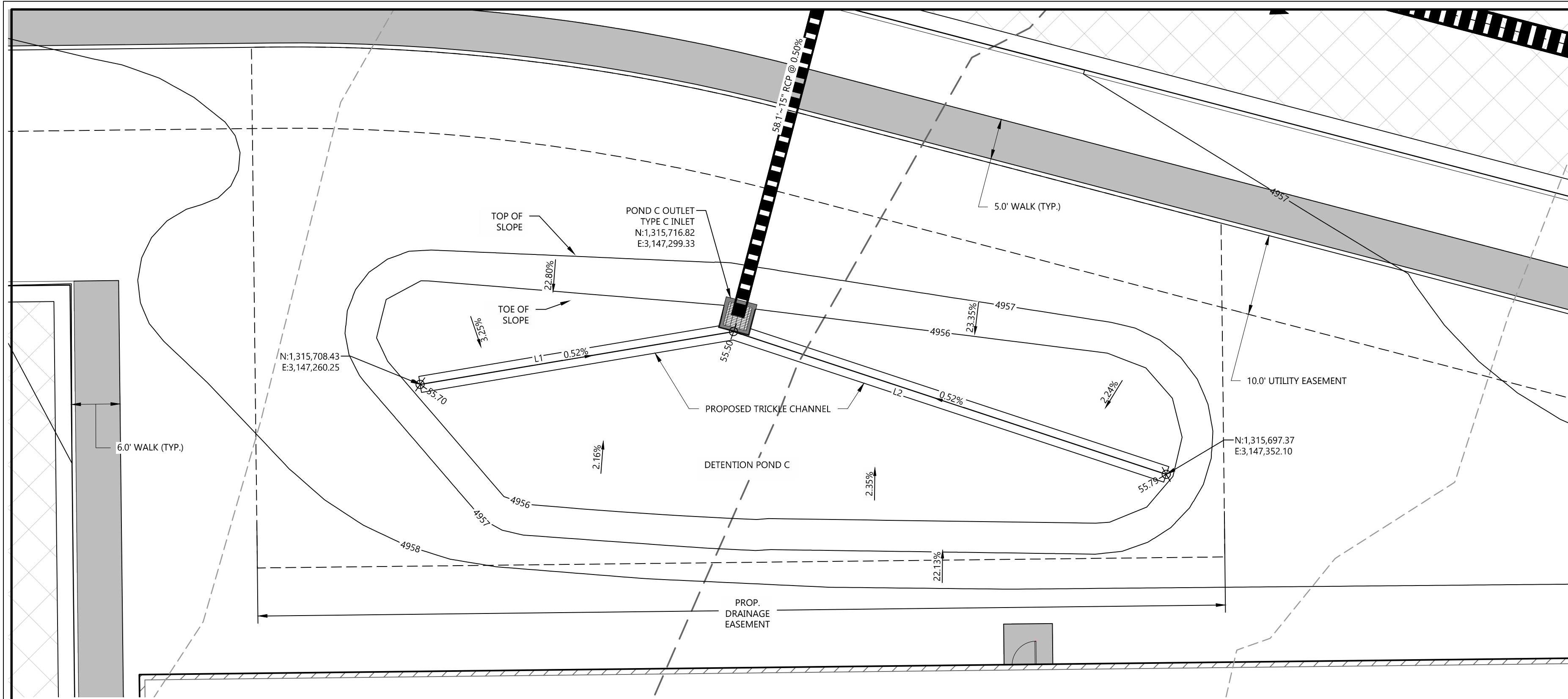
ELEVATION 25 - PHASE 1
CIVIL CONSTRUCTION DRAWINGS

MEAD

CO

DRAWING NO.

C6.2



SEE SHEET C1.0 & C1.1 FOR LEGEND AND GENERAL NOTES

BENCHMARK:

A GPS DERIVED ELEVATION WAS ESTABLISHED AT AN ONSITE BENCHMARK NEAR THE NORTH PROPERTY LINE OF SUBJECT PROPERTY, BEING A SET #4 REBAR WITH 1" PINK PLASTIC CAP "FLATIRON CONTROL" WITH AN ELEVATION OF 4965.65 FEET. A CHECK SHOT, 0.1% WAS TAKEN ON NGS POINT P-329, BEING A BENCHMARK DISK ON CONCRETE MONUMENT LOCATED 0.8 MILES FROM SITE WITH A PUBLISHED ELEVATION OF 4953.57 FEET (NAVD88). NO DIFFERENTIAL LEVELING WAS PERFORMED TO ESTABLISH THIS ELEVATION.

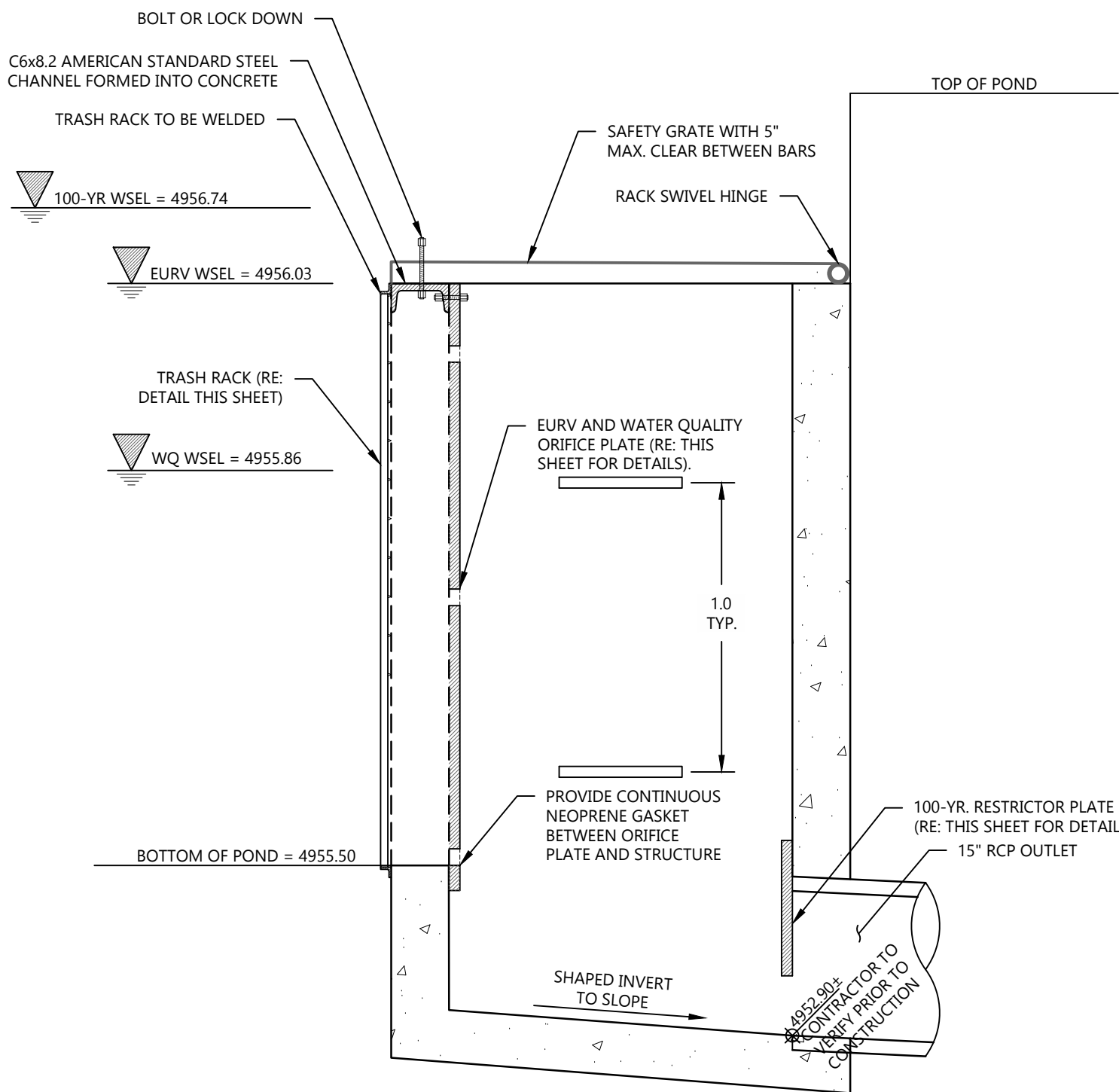
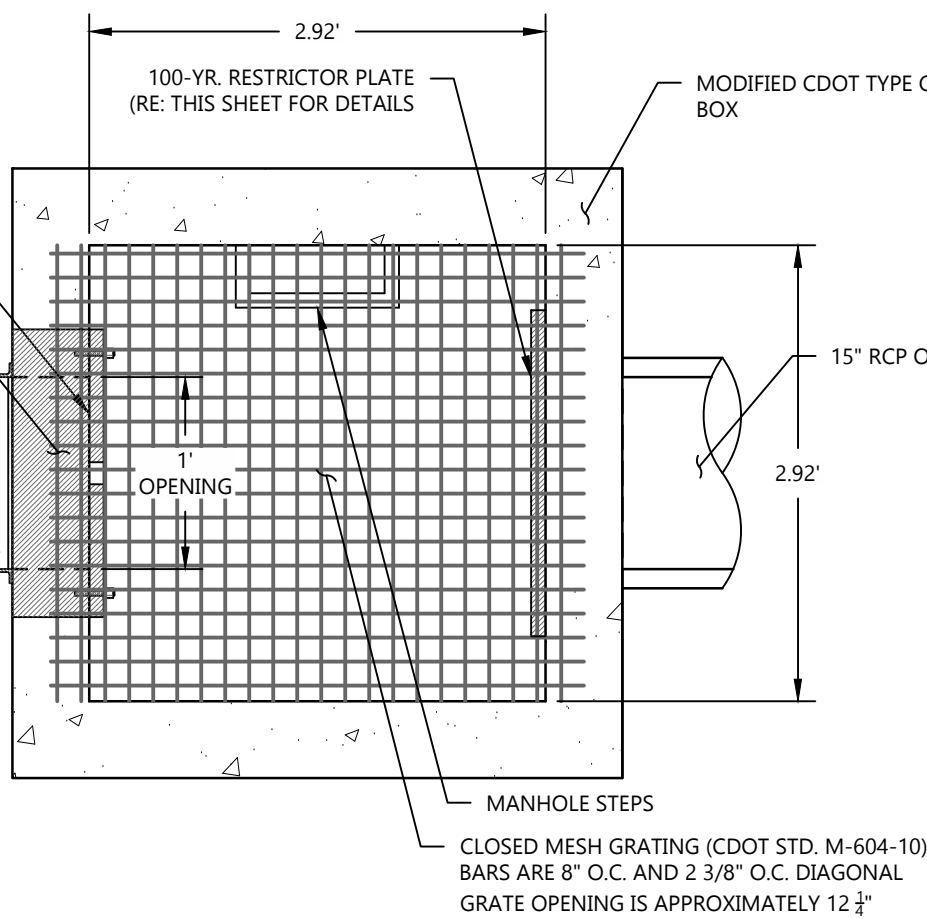
NOTES:

- SPOT ELEVATION VALUES ARE BASED ON THE COLORADO STATE PLANE COORDINATE SYSTEM, NORTH AMERICAN DATUM 1983 (NAD 83), WITH THE TWO LEADING DIGITS TRUNCATED (ADD 4900), AND DO NOT RELATE TO ARCHITECTURAL ELEVATIONS RELATIVE TO FINISHED FLOOR (I.E. +100'-0").
- UNLESS SPECIFICALLY SHOWN OTHERWISE, ALL SIDEWALKS TO SLOPE 1.8% AWAY FROM BUILDINGS OR STRUCTURES TOWARD PARKING LOTS, DRIVE LANES, ROADS OR LOW POINTS.
- UNLESS SPECIFICALLY SHOWN OTHERWISE, ALL PROPOSED WALKS AND TRAILS SHALL BE ADA ACCESSIBLE WITH A MAXIMUM LONGITUDINAL SLOPE OF 5.0%.
- ALL GRADING SHALL CONFORM WITH THE GEOTECHNICAL RECOMMENDATIONS FROM THE CURRENT GEOTECHNICAL STUDY FOR THIS PROJECT.
- PROPOSED ACCESSIBLE PARKING SPOTS SHALL HAVE 2.0% MAX SLOPE IN ANY DIRECTION.
- ALL ELEVATION SPOTS ALONG CURB INDICATE FLOWLINE ELEVATION UNLESS OTHERWISE NOTED.
- TOP OF RETAINING WALL IS TO BE FLUSH WITH BACK OF CURB.
- MAXIMUM FINISHED GRADES SHALL BE 4:1 (H:V).
- THE CONTRACTOR IS RESPONSIBLE TO LOCATE ALL EXISTING UTILITIES ONSITE PRIOR TO CONSTRUCTION AND PROTECT OR RELOCATE ALL EXISTING UTILITIES DURING GRADING OPERATIONS. THIS PLAN DOES NOT CONSTITUTE A UTILITY LOCATE.
- THE CONTRACTOR SHALL NOTIFY THE ENGINEER IMMEDIATELY OF ANY DISCREPANCIES WITH THESE PLANS.

PROPOSED OUTLET STRUCTURE SHALL BE A MODIFIED CDOT TYPE C INLET (RE: DETAILS SHEET C12.2)

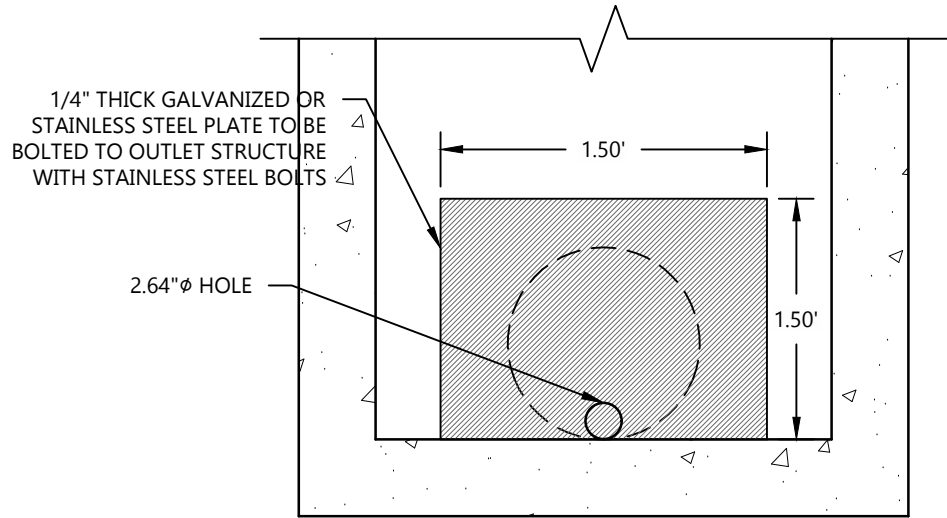
EURV AND WATER QUALITY ORIFICE PLATE (RE: THIS SHEET FOR DETAILS).
C6x8.2 AMERICAN STANDARD STEEL CHANNEL FORMED INTO CONCRETE

TRASH RACK (RE: DETAIL THIS SHEET)

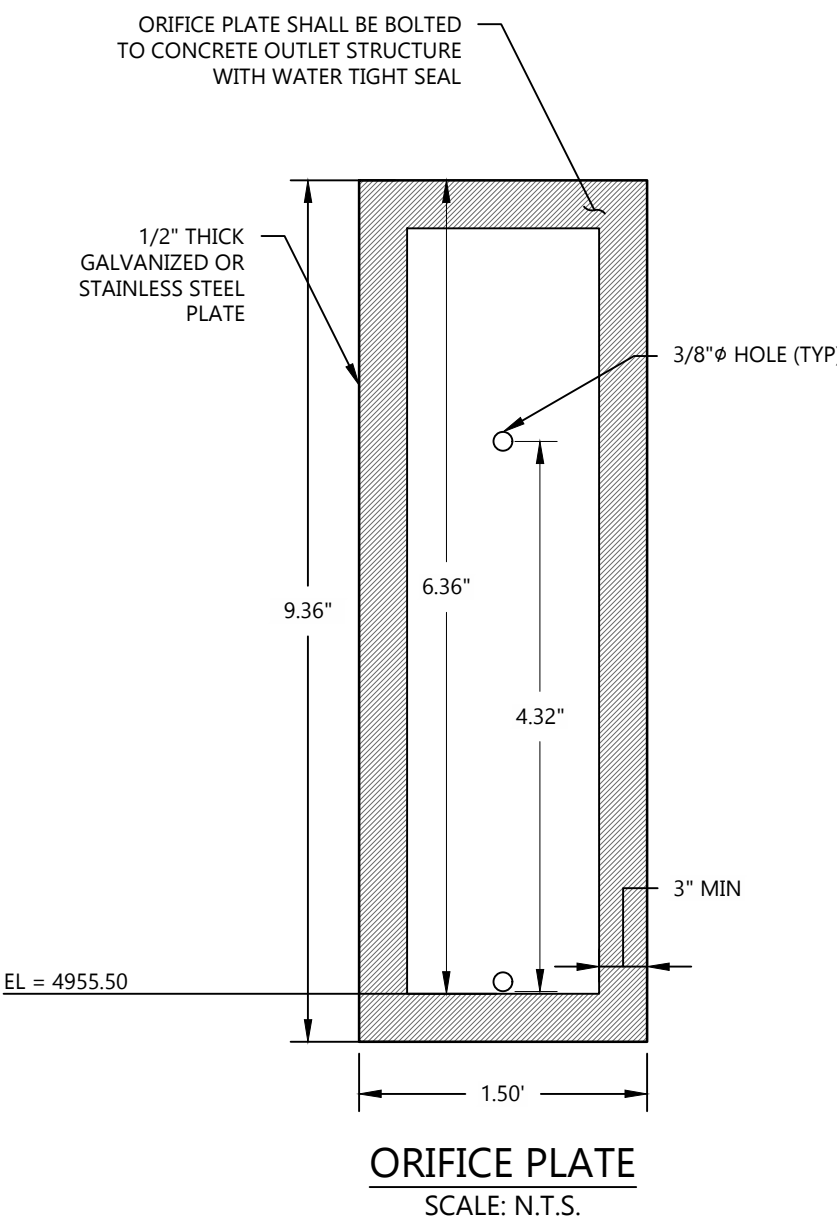


OUTLET STRUCTURE SECTION
SCALE: N.T.S.

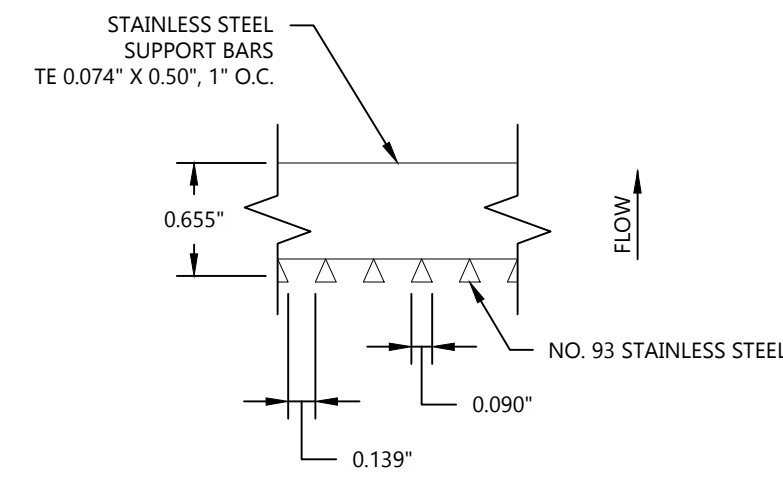
LINE TABLE		
LINE No.	LENGTH	DIRECTION
L1	39.13'	N80° 26' 43"E
L2	56.08'	N71° 44' 56"W



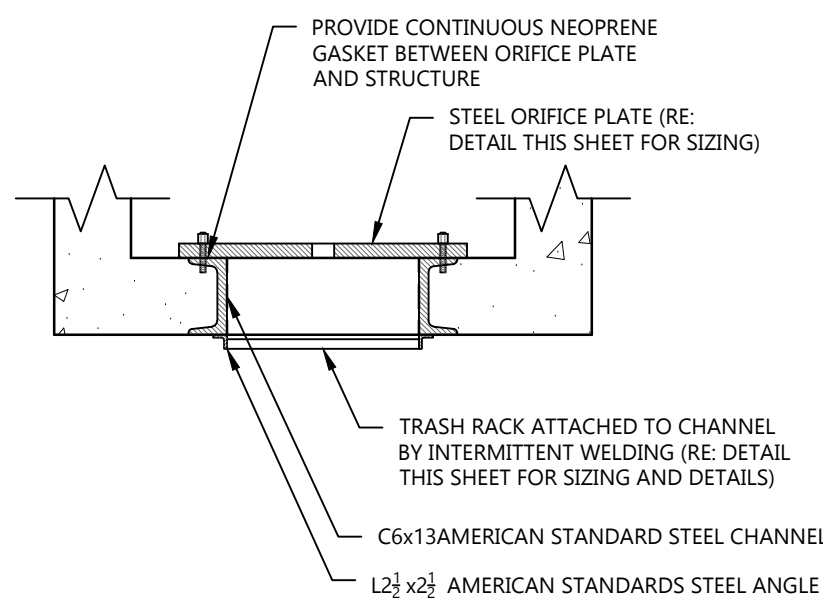
100-YR. RESTRICTOR PATE
SCALE: N.T.S.



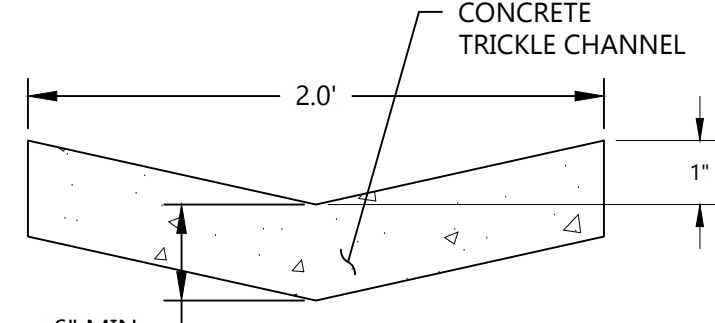
ORIFICE PLATE
SCALE: N.T.S.



TRASH RACK DETAIL
SCALE: N.T.S.



OUTLET STRUCTURE OPENING DETAIL
SCALE: N.T.S.



TRICKLE CHANNEL
SCALE: N.T.S.



TOWN OF MEAD APPROVAL
THESE PLANS ARE HEREBY APPROVED FOR ONE YEAR FROM DATE OF THE TOWN ENGINEER'S APPROVAL

APPROVED BY: _____ DATE: _____

TOWN ENGINEER

PROOFcivil
consulting engineers
600 Grant Street | Suite 210 | Denver, CO

SEAL:

REVISIONS

NO.	DATE	DESCRIPTION

PROJ. NO.: 21029

DATE: 8/25/2021

DRAWN BY: _____

CHECKED BY: _____

POND C PLAN & DETAIL
DETENTION POND C

ELEVATION 25 - PHASE 1
CIVIL CONSTRUCTION DRAWINGS

MEAD

DRAWING NO. C6.3