



# OPEN CANVAS

THE NEWSLETTER OF THE LEAGUE OF MILWAUKEE ARTISTS

FEBRUARY, 2023

## Presidential Perspective

### LMA Presidents Letter February 2023

Happy February, League of Milwaukee Artists,

With the promise of Spring comes many LMA exhibition opportunities. All of these are on our website for you to enter. Please check it out at <https://milwaukeeartists.org/> for all the dates and details of these upcoming events. Also, if you haven't already, join our LMA Members Facebook page at:

<https://www.facebook.com/groups/1012219459600743>

This year we have many events that you can enter, why not submit to all the events? Being in shows looks great on your resume and reinforces the League of Milwaukee Artist's presence in Wisconsin.

This Saturday we are offering a critique of your work at our meeting. Having your work critiqued by a professional can really help you expand and think about your work in other ways you hadn't thought of before. It can also help you decide on a piece to enter into one of our shows.

Creatively yours,  
Judy



#### Your Board

##### President

Judy Gahn-Murphy  
[rtbyjudy@gmail.com](mailto:rtbyjudy@gmail.com)

##### Vice President

Bob Fesser  
[waysofwax@gmail.com](mailto:waysofwax@gmail.com)

##### Membership Chair

Karen Uttech  
[kjltaj@gmail.com](mailto:kjltaj@gmail.com)

##### Exhibit Chair

May Klisch  
[mayklisch@gmail.com](mailto:mayklisch@gmail.com)

##### Treasurer

Debra Patterson  
[d91bravo@gmail.com](mailto:d91bravo@gmail.com)

##### Publicity Chairs

Mary Prince  
[mary.prince88@yahoo.com](mailto:mary.prince88@yahoo.com)  
Laura Fesser  
[laurafesser@yahoo.com](mailto:laurafesser@yahoo.com)

##### Recording Secretary

Tom Smith  
[jtsmith5@sbcglobal.net](mailto:jtsmith5@sbcglobal.net)

##### Webmaster

David Kurtz  
[davidlkurtz@wi.rr.com](mailto:davidlkurtz@wi.rr.com)

##### Other Positions

##### Newsletter Editor

Tom Smith  
[jtsmith5@sbcglobal.net](mailto:jtsmith5@sbcglobal.net)

##### Hospitality

Donna Staats

## LMA Meeting Information

Meetings are held on the second Saturday of each month starting at 9:30 am (ending at approximately 11:30 am). We meet at Cardinal Stritch University, 6801 North Yates Rd, Milwaukee, in the Joan Steel Stein Center for Communications & Fine Arts

**ROOM CFA 125** Map available on LMA website here:

<https://milwaukeeartists.org/meetings-1>

\*\*\*\*\*

### Upcoming Meeting Preview: Saturday, February 11th.

For our February meeting, members are encouraged to bring a recent piece they want to have critiqued and get feedback on.

Our guest judge will be Elio Garcia. Elio is a member of MARN's Curatorial Advisory Committee and juried the current MARN exhibition, "The Further We Reach, The Closer We See. He also is an interdisciplinary artist himself.

Elio is a graduate from the Milwaukee Institute of Art and Design with a Bachelor of Fine Arts. His practice ranges from, poetry/prose, video work, painting/drawing, mixed media paintings, sculpture/installation, and experiments with upcycling garments.

He has exhibited work in group shows at Walker's Point Center for the Arts and Between Two Galleries. His work has not been limited to just the realms of the arts, but is also inclusive of community-based work through non-profit organizations. From the likes of working in community centers, to public schools, and arts-based organizations, Elio has over eight years of mentorship and facilitation catered to various age groups. This combination of the arts and community-based work is the bridge he aims to continually maintain.



To see a video interview with  
Elio click on this link!

<https://www.fox6now.com/news/gallery-night-mke>

## *Artist Opportunities*

Are you teaching a workshop or know of a space looking for artists? Tell us about it here! I've also found various opportunities from my usual sources. **If you know of an o**

**ppportunity that you'd like to share with fellow artists, please email me sometime before each newsletter deadline!**

*Do you know how to access the web pages I refer to in "The Open Canvas"? A link will be underlined, and usually a bit "grayed-out". Simply put your cursor on top of the link, press ctrl and click! It should take you automatically to the website or page.*

**Call for Artists: Exhibition Application for Madison Public Library 2023-2024** <https://www.cityofmadison.com/news/call-for-artists-exhibition-application-for-madison-public-library-2023-2024>

**For you photographers:** <https://www.worldphotoclub.org/>

**Scroll down on this page for an exhibit JUST FOR WOMEN!** (sorry guys!)  
<https://www.d-artcenter.org/call-for-artists-.html>

The JAMES WATROUS GALLERY in Madison has a great opportunity:  
<https://www.wisconsinacademy.org/2023-call-artists-and-curators>

Ever hear of the show at the Racine Art Museum with art made from those awful marshmallow "Peeps"? Enter here! (a friend of mine won 1<sup>st</sup> place last year!)  
<https://www.ramart.org/artist-resources/call-for-artists/>

Several of our members have been in shows at The Art Garage in Green Bay. Here's your chance: <https://theartgarage.org/collections/artist-opportunities>

Check out "artshow" for a bunch of stuff!  
<https://artshow.com/juriedshows/midwest.html>

Out of Madison, "Integrated Art Group curates art locally and nationally for healthcare facilities and corporate offices. We are expanding our art portfolio. If you're a talented artist we welcome you to submit your work below."

<https://www.integratedartllc.com/calls-for-artists>

**Go north young man (or woman!)** and enter the 36th Annual Northern National Art Competition here:  
[https://artist.callforentry.org/festivals\\_unique\\_info.php?ID=11050](https://artist.callforentry.org/festivals_unique_info.php?ID=11050)

## *Member Doings*

Here I'll post exhibits you are in, awards, or special recognition you have received. I'll also be happy to post "Marketplace" art items you may be wanting to sell. I do not post members that are in our own shows. Go see them in person!

Please remember that all submissions to the newsletter need to be sent directly to me at [jtsmith5@sbcglobal.net](mailto:jtsmith5@sbcglobal.net)

Several members are showing in the Rogues Artists Group show "The Zodiac", at Inspiration Studios. The exhibit is located at 1500 S. 73rd Street in West Allis and is open Saturdays in February from 10 am to 1 pm. **Gwen Granzow** won Best of Show, and Honorable Mention went to **Laurie Runnoe**, Second Place to **Tom Smith**, and First Place to **JJ Joyce**.

**Lindsay Schwarz** was in the member's show at MOWA Dec-Jan 21; she will be donating two pieces of art to the 16th street clinic for their silent auction.

Several members are participating in the Wisconsin Visual Artists "Hip2B Square" exhibit at the Art\*Bar. They are **Marcia Hero, Diane Zeni, Tom Smith, Julie San Felipe, and Laurie Runnoe**. The Art\*Bar is at 722 E Burleigh St, Milwaukee WI. The event will open with a Reception on Friday, February 17th from 5:00 to 8:00 pm.

**Bob Fesser** and **Cherie Burbach** have pieces juried into the "Home" Exhibition at The Art Garage in Green Bay. Fesser's "Memories of Freedom" and "Solitude", and Burbach's fiber art piece "Neighborhood" and mini-art gallery dollhouse "Artful Home" were selected. Fesser's "Memories of Freedom" won 3rd Place. The exhibition runs from February 1st thru February 25th.

**Ken Vonderberg** has received a "Fav 15%" award in the BoldBrush December online painting competition and has a drawing in "NūD, The Art of the Figure" exhibition at Gallery at Graphite in Edmonds, WA from 1/21/2023 - 3/18/2023. He also will have a portrait in the "Figures or Faces" exhibit at the Las Lagunas Gallery in Laguna Beach, CA from 3/2/2023 - 3/31/2023.

**Nick Schroeder, Marcelline Weinsheim, and Karen Utech** have work in the *11th Annual Members' Exhibit* at the Cedarburg Cultural Center running from January 21 – March 5, 2023. Schroeder has two ceramic wall tiles, Weinsheim has her oil painting titled "The Study", and Utech has two watercolor paintings in the show.

**Nick Schroeder** also has two ceramic wall tiles in the *Celebrating Women* juried exhibition in the Kavanagh Gallery at the Fine Line Creative Arts Center, St. Charles, Ill. The show runs from February 16 to March 24, 2023. There will be a public opening reception from 6–8 pm on February 16.

**Karen Utech** is also a participant in the ArtAsPoetryAsArt event coordinated by the Lakeshore Artists Guild.

---

**Colette Ody Smith** will be offering an online/zoom workshop through the Pastel Society of America. Time to sign up is short, but there is still room. February 17, 18, 19, 2023, from 1p.m. to 5p.m. "Composition as Key to Abstract Realism in Contemporary Landscape". Each day will include direct instruction and examples, with individual work time and feedback. You can use the link below to see more information from the catalog on their website. [PDF Flip \(pastelsocietyofamerica.org\)](https://pastelsocietyofamerica.org)

Monoprints by **Jack Pachuta and Jewell Riano-Bradley** will be part of "The Art of Master Printmaker Paul Yank's Studio Artists" exhibit at the Center for the Visual Arts in Wausau. The show opens on Friday, March 24th and runs until Saturday, May 27th with the opening reception on Friday, March 31st. Several of Yank's original monoprints will be featured along with the work of five artists who were taught printmaking by Yank.

**Cherie Burbach** is also in the "24 Hour Show" opening February 4th at the Arts Mill in Grafton, WI. Artists had just 24 hours to create a painting and each work will be auctioned off in this fun event. Exhibit runs through Feb. 28th.

**Terri Lockwood** will be exhibiting at the newly remodeled Waukesha State Bank Art Gallery (located in the lobby of the Waukesha Civic Theatre) from March 4th-April 10th with reception to take place on March 4th from 2pm-7pm. For further details, please go to: [www.waukeshacivictheatre.org](http://www.waukeshacivictheatre.org) Her painting "Himeji Castle" won Honorable Mention in this month's exhibit "Trips and Travels" at Main Street Gallery in Cedarburg, Wisconsin."

The busy **Julie San Felipe** is also showing at the Irish American Heritage Center, Chicago "Celtic Spring" opening reception 2/24, 7-9pm, and closing reception 4/30 2-5pm. She is also in the WVA statewide "Perspectives 2023" with a March 4 reception, and up through 4/15, at the Thelma Sadoff in Fond du Lac. Finally, Julie is in Watercolor Wisconsin, up through 4/15, at the Charles Wustum in Racine.

**Renee Couture** and three other artists (from WCAL) are showing their work at Tudor Oaks Senior Living in Muskego. The work will be on display in their community room for the months of February and March.

**Jeanne Bril** will have pastel and acrylic paintings on exhibit at No Studios in their Sky Room. The opening reception is on Friday February 17 from 7-9 pm, two other artists have work on display. No Studios is located at 1037 W McKinley Avenue in downtown Milwaukee, at the former Pabst Brewery site.

***Speaking of No Studios, go to our website Exhibitions tab at <https://milwaukeeartists.org/exhibitions> to apply for this unique opportunity. More info about No Studios (a very cool spot and a great opportunity for a fabulous show) is on the same page!***

## Milwaukee Art Museum Update

From Member Mauree Childress: Your Milwaukee Art Museum hours are Wednesday, 10am-5pm; Thursday, 10am-8pm; and Friday-Sunday 10am-5pm.

- *The Ashcan School and The Eight: "Creating a National Art"* will end on February 19, 2023. The Ashcan School emerged during the first years of the 20<sup>th</sup> Century as a revolutionary art group. These artists embraced a loose painterly style to portray factories and immigrants, congested urban streets and bawdy entertainments. Some praised the artists as "creating a national art" while others dismissed them as painters of rubbish or "ashcans." The Ashcan School and The Eight have renewed relevance today with their emphasis on class, gender, immigration, urban life, and other subjects deeply embedded in the cultural fabric of our nation. The Milwaukee Art Museum has one of the largest collections of the Ashcan School and The Eight, and the exhibition features prints, drawings, paintings, and pastels.
- Opening on February 24<sup>th</sup> in the Herzfeld Center for Photography and Media Arts is [Native America: In Translation](#). In this exhibition, 10 artists consider Indigenous histories, cultures, and representation through a contemporary lens. Photography, a medium historically used to suppress and stereotype Native cultures, is reclaimed by these artists, who are, in the words of the curator Wendy Red Star, "opening up space in the art world for new ways of seeing and thinking."

The Museum Café on the Café Level, under Windhover Hall, is open. The Kohl's Art Studio is open Friday–Sunday, 10am–4pm. Reserve your admission tickets and find information on parking, safety protocols, and more at [mam.org/visit](http://mam.org/visit).



Images: Everett Shinn (American, 1876–1953), *Nightclub Scene*, 1934

Martine Gutierrez (American, b. 1989), *Queer Rage, Imagine Life-Size, and I'm Tyra* (detail), from the series *Indigenous Woman*, 2018. Inkjet print.

### **Mauree also recommends attending this show:**

[Rediscovering Ruth Grotenrath: All Things Belong To This Earth](#) at the Warehouse Art Museum in Milwaukee until March 31.

"Ruth Grotenrath was born in Milwaukee, Wisconsin in 1912... The Warehouse Art Museum's exhibition is the first comprehensive retrospective of her work. It begins with black-and-white images made for the 1929 Riverside High School yearbook. The exhibition includes early social realism for the Work Progress Administration (WPA), textile designs, and numerous still lifes. Most of the exhibition features Grotenrath's invention of a unique, personal art, for which she is known and remembered." [From the Warehouse Art Museum website <https://wammke.org/> ]



## Around the Web

### Surfing the web!

Here you'll find a link or 2 to an interesting art related article, blog post, or whatever! You will need to put your cursor over the link and press CTRL, then click to read the entire post. Email me with any links you'd like to offer to share. Try something-you'll like it!



***Disclaimer: some of these sites are commercial and may have the bane of pop ups or ads trying to get you to sign up for their newsletters, etc. They all are safe however and I've visited them and find them worth the look.***

**You think we live in a polluted society? Check this out!**



<https://hyperallergic.com/796492/did-air-pollution-inspire-impressionism/>

**Do you get burned out? Uninspired? This NPR article/podcast may help!**



<https://www.npr.org/2021/12/06/1061925009/creative-rut-burnout-getting-out>

**The Uffizi Gallery shares a break-down of this famous Renaissance painting!**



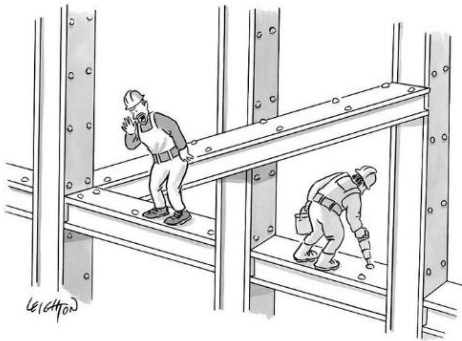
<https://www.uffizi.it/en/online-exhibitions/portinari-triptych>

From Michelle Savas Thompson: For sale: multiple fixtures for the display and sale of art. Solid aluminum racks on wheels as well as convenient folding racks for travel.

Also have a couple aluminum shelves that can be hung on metal grids or used on a tabletop. Most pieces from Graphic Display Systems. Pop-up shelter from EZ-Up also available. Reasonable prices to support a family estate. Discounts given for multiple items.

Contact Jesse at: [jesscmess@gmail.com](mailto:jesscmess@gmail.com).

# The Funny Page!



"Escher! Get your ass up here."



This is how people ignored each other before smartphones



Don't blame me-I didn't write 'em!

An artist has a 6-year-old child who also likes to draw so he drew a horse. The artist said, "You drew the horse all wrong."

The child replied, "How did I draw it?" The artist asked, "Why does the horse have wings?"

The child replied, "Why can't it have wings?"

The artist said, "It isn't a horse if it has wings."

The child replied, "Then why did you call it a horse?"

Whenever my artist girlfriend is sad, I let her draw things on my body.

I give her a shoulder to crayon.

**I saw a graffiti artist spraying a police station in a thick font.**

**Now that is bold.**

I once insulted an artist about his bad painting-he just brushed it off.

When Pablo Picasso was a young struggling artist, he was several months behind in the rent.

The landlord came by and told him that if he didn't come up with the money he would be evicted on Tuesday.

Picasso exclaimed, "Before you kick me out, just think, years from now people will look at this building and say the great Picasso lived there."

The landlord looked at him blankly and said, "And if you don't come up with the money they can start doing it Tuesday."



Here's an article from the online magazine

# Alchemy, Warfare, and Scenes from a Harem

By Christopher Volpe

Share this article: [f](#) [t](#) [g+](#) [in](#)



On August 25, 1758, a Prussian soldier, a young officer who'd grown up a nobleman yet proudly chose the life of patriotism and battle, squinted through the dusty, late August sun beating down on his uniform's greatcoat.

The Russian army he faced outmanned his own by more than 1,000 infantrymen and had twice the number of armed men on horseback. Yet, history records that on that day King Frederick's Prussians narrowly defeated the Russian forces at Zorndorf (now Sarbinowo, Poland), leaving 21,000 Russians dead. Though almost too close to call, it was another victory for Prussia's class of military noblemen who notched numerous unlikely wins against Europe's encroaching great powers, successfully

fighting to establish a united Germany, despite having drastically fewer resources and manpower.

The unique color of that young man's uniform that day at Zorndorf came from a newly created pigment, accidentally discovered in 1705, that would come to be known as Prussian Blue. It owes its existence to chance and a down-and-out alchemist who parlayed an error into a fortune.

## Kur-Brandenburg.



Grenadier-Unteroffizier.

Grenadier.

Grenadier-Offizier.

Infanterie-Regiment Fürst Leopold von Anhalt-Dessau.

(1806 Inf.-Rgt. v. Renouard No. 3.)

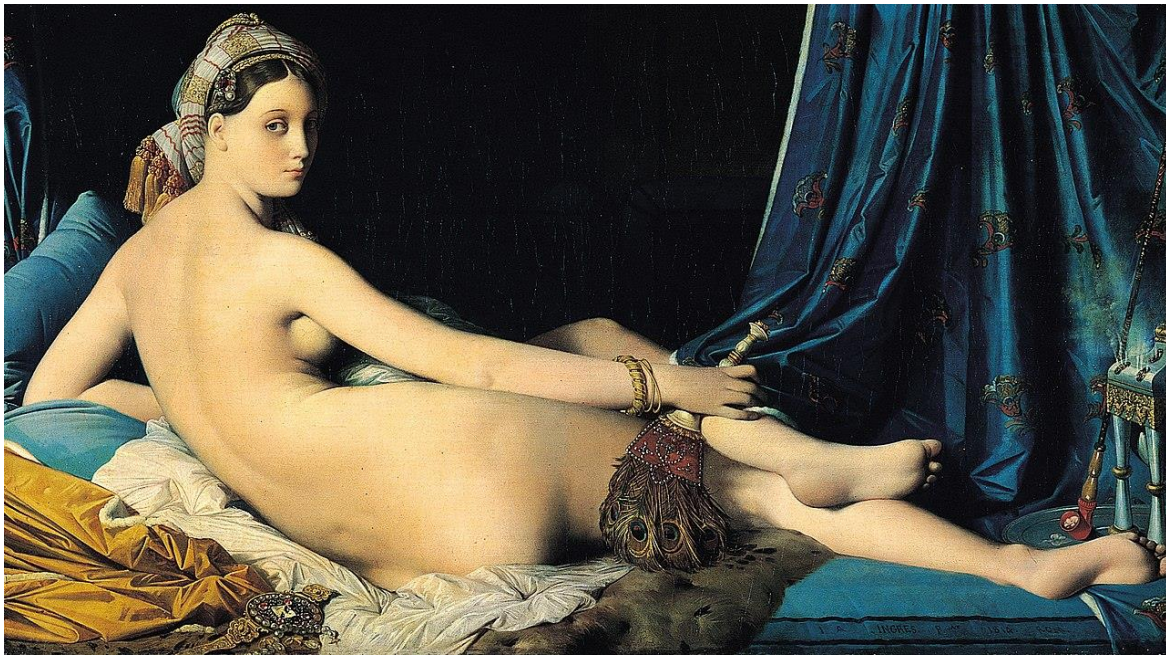
**1698.**

Das im Jahre 1665 errichtete Regiment wurde 1698 das Leib-Regiment des „alten Dessauer“.  
In der Uniform, die unser Bild zeigt, focht das Regiment in den Jahren 1703–1706 bei Bonn, Höchstädt, Cassano, Calcinato, Turin und in einer Reihe anderer Schlachten und Gefechte mit grosser Auszeichnung.  
Nach langer ruhmreicher Geschichte fand das Regiment in der Katastrophe von 1806 seine Auflösung.

*“I say, Sir, that jacket of yours is rather a lovely shade of blue....” “Thank you, Sir. And may I return the compliment to you, Sir!”*

It was the first artificial blue pigment, and over the years it acquired several other “blue” names, including Berlin, Parisian, and Turnbull’s blue. Before the 18th century, blue was a rarity in painting. Only a single mine in Afghanistan produced lapis lazuli, the semi-precious mineral ground to make the Ultramarine blue (so named because it literally came, via trade ships, from *beyond the sea*). Because Ultramarine was so expensive to make and in such short supply, until Prussian came along, blue was almost exclusively reserved for religious paintings, such as Michelangelo’s ceiling frescoes at the Vatican. There were other blues, including indigo and azurite, but they were all greenish, weak, or tended to fade.

However, by 1814, when Ingres painted the decidedly secular harem girl in *The Grand Odalisque*, he could employ the revolutionary, saturated, and reliable Prussian blue as a means of accentuating his subject’s exoticism.



Jean\_Auguste\_Dominique\_Ingres,\_La\_Grande\_Odalisque,\_1814

It was discovered sometime between 1704 and 1706 in a dimly lit paint-grinder’s workshop in Berlin. Jacob Diesbach was mixing up some cochineal red (created from crushed beetles) with iron sulfate when he realized he’d run out of a crucial ingredient – potash. He dashed out to the nearest supplier, a disreputable alchemist named Johann Konrad Dippel, who sold him a batch that turned his mixture first pink, then purple, and finally a deep blue. Diesbach went back to the man and demanded to know what was going on. They realized that the potash he’d supplied had reacted with impurities in the



iron sulfate and somehow produced the compound *ferrocyanide*, which is still the main chemical component in the paint.



Japanese woodblock printing artists such as Hokusai fell in love with it at once.

Despite the “cyanide” part of the name, Prussian blue is not toxic. (By the way, phthalocyanine blue, or “phthalo blue” for short, is very similar but made a bit differently, using copper instead of iron sulfate and happens to be a bit more transparent too). A few decades later, a photographer-chemist figured out how to use “cyan” in combination with the new invention of photo-sensitive paper and the first *blueprints* were born. Both Prussian and phthalocyanine are considered “transparent” pigments because their crystalline nature allows light to bounce *through* instead of *off* the pigment’s surface – unlike the solids in a tube of the more opaque Ultramarine.

Prussian blue plays very well with white, and it’s got tremendous tinting strength – as well as an annoying ability to somehow get itself everywhere and anywhere (think cheeks, sleeves, tabletops, ears....), which is unfortunate – because its “staining” quality makes it one of the harder pigments to clean up.

## Last Page Stuff

### Exhibit Opportunities

- You must be an LMA member in good standing. Due to Covid 19 the requirement of attending two meetings in 12 months has been waived. All other requirements apply.
- **ONLY WORKS THAT HAVE BEEN CREATED WITHIN THE LAST 3 YEARS AND HAVE NOT BEEN PREVIOUSLY EXHIBITED IN ANY OTHER LMA SHOW WILL BE CONSIDERED.**

### New Exhibits

**"IN PRAISE OF SPRING" AT THE POLISH CENTER ART GALLERY...and NŌ STUDIOS FEATURED ARTIST 2023**

To Enter Go to the Exhibitions tab at our website at

<https://milwaukeeartists.org/exhibitions>

\*\*\*Note that Entries for "IN PRAISE OF SPRING" must be submitted digitally by midnight on March 3rd, 2023.

Welcome new member Mary Nevicosi! Visit her art at

<https://www.saatchiart.com/Nevicosi>

Know an artist friend who should join LMA? Tell them to go to our website to find out how to join! The submission links for 2021 are on our website here:

<https://milwaukeeartists.org/join-lma>

### Upcoming New Member Jury Dates

Submission Deadline	Acceptance Announcement
January 20, 2023	January 26, 2023
April 21, 2023	April 27, 2023
August 18, 2023	August 24, 2023
November 17, 2023	November 22, 2023

**Speaking of emails, check your Spam folder if you have not been getting emails from LMA. Because we use a service which sends out mass emails, some of you may be having them sent to Spam. Don't forget to look at our website though, ([www.milwaukeeartists.org](http://www.milwaukeeartists.org)) and our LMA Members Facebook page!**



*Finally, eh?*