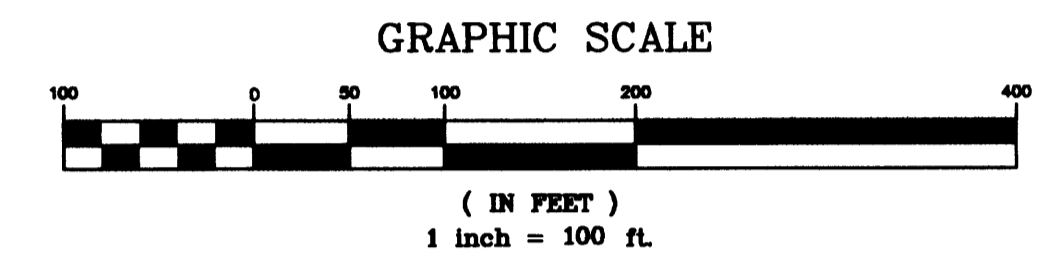
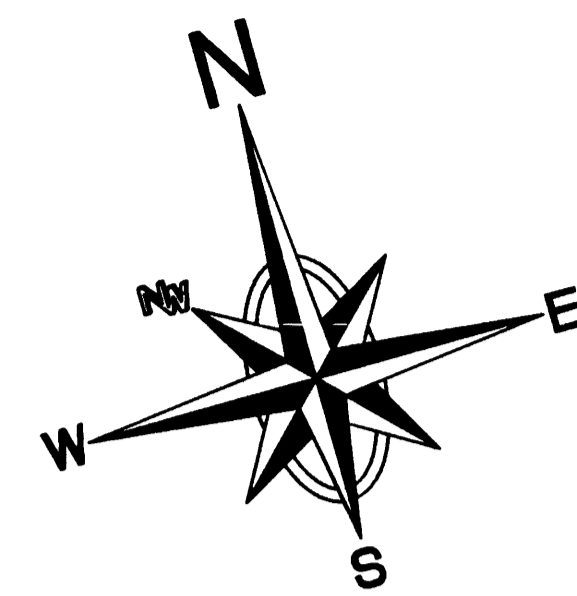


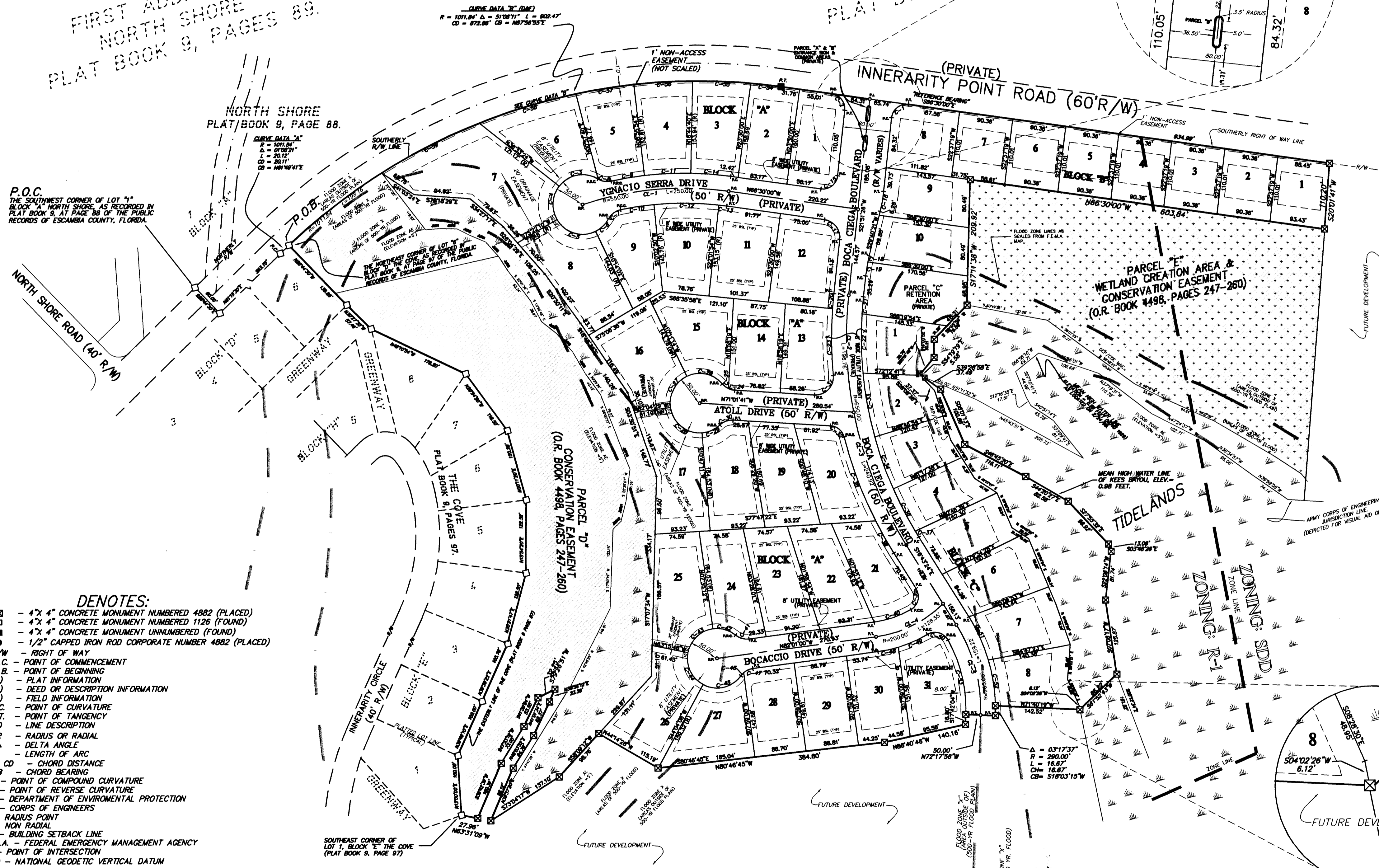
A RECORD PLAT OF RUSSELL BAYOU AT INNERARITY ISLAND PHASE 1

A SUBDIVISION IN A PORTION OF SECTION 15, TOWNSHIP 3 SOUTH, RANGE 32 WEST,
JUAN INNERARITY GRANT, ESCAMBIA COUNTY, FLORIDA.
APRIL 2001



FIRST ADDITION TO
NORTH SHORE
PLAT BOOK 9, PAGES 89.

NORTH SHORE
PLAT BOOK 9, PAGE 88.



LOT AND RIGHT OF WAY CURVE INFORMATION

LOT	ARC	LENGTH	BEARING	CHORD	CHORD BEARING	AREA
1
2
3
4
5
6
7
8
9
10
11
12
13
14
15
16
17
18
19
20
21
22
23
24
25
26
27
28
29
30

CENTER LINE CURVE INFORMATION

ARC	LENGTH	BEARING	CHORD	CHORD BEARING	AREA
...
...
...
...

- DENOTES:**
- - 4" x 4" CONCRETE MONUMENT NUMBERED 4882 (PLACED)
 - - 4" x 4" CONCRETE MONUMENT NUMBERED 1126 (FOUND)
 - - 4" x 4" CONCRETE MONUMENT UNNUMBERED (FOUND)
 - - 1/2" CAPPED IRON ROD CORPORATE NUMBER 4882 (PLACED)
- R/W** - RIGHT OF WAY
P.O.C. - POINT OF COMMENCEMENT
P.O.B. - POINT OF BEGINNING
PI - PLAT INFORMATION
(D) - DEED OR DESCRIPTION INFORMATION
(F) - FIELD INFORMATION
P.C. - POINT OF CURVATURE
P.T. - POINT OF TANGENCY
L30 - LINE DESCRIPTION
R - RADIUS OR RADIAL
Δ - DELTA ANGLE
L - LENGTH OF ARC
CH & CD - CHORD DISTANCE
CB - CHORD BEARING
PCC - POINT OF COMPOUND CURVATURE
PRC - POINT OF REVERSE CURVATURE
DEP - DEPARTMENT OF ENVIRONMENTAL PROTECTION
COE - CORPS OF ENGINEERS
RP - RADIUS POINT
NR - NON RADIAL
BSL - BUILDING SETBACK LINE
F.E.M.A. - FEDERAL EMERGENCY MANAGEMENT AGENCY
P.I. - POINT OF INTERSECTION
NGVD - NATIONAL GEODETIC VERTICAL DATUM

NW NORTHWEST FLORIDA ENGINEERING & SURVEYING, INC.
 A PROFESSIONAL SERVICE ORGANIZATION
 1500 N. Palafox St. Pensacola, FL 32501 (850) 432-1052
 106 Willing St. Milton, FL 32570 (850) 626-9270

NOTICE:
 THIS PLAT, AS RECORDED IN ITS GRAPHIC FORM, IS THE OFFICIAL DEPICTION OF THE SUBDIVIDED LANDS DESCRIBED HEREIN AND WILL IN NO CIRCUMSTANCES BE SUPPLANTED IN AUTHORITY BY ANY OTHER GRAPHIC OR DIGITAL FORM OF THE PLAT. THERE MAY BE ADDITIONAL RESTRICTIONS THAT ARE NOT RECORDED ON THIS PLAT THAT MAY BE FOUND IN THE PUBLIC RECORDS OF ESCAMBIA COUNTY, FLORIDA.

OWNER & DEVELOPER
 RUSSELL BAYOU CORPORATION
 4300 BAYOU BOULEVARD, SUITE 21
 PENSACOLA FLORIDA, 32503
 PHONE: (850)932-9790
 FAX: (850)932-9791

PB 17 P 21A