

CORPS OF ENGINEER WETLAND LINE

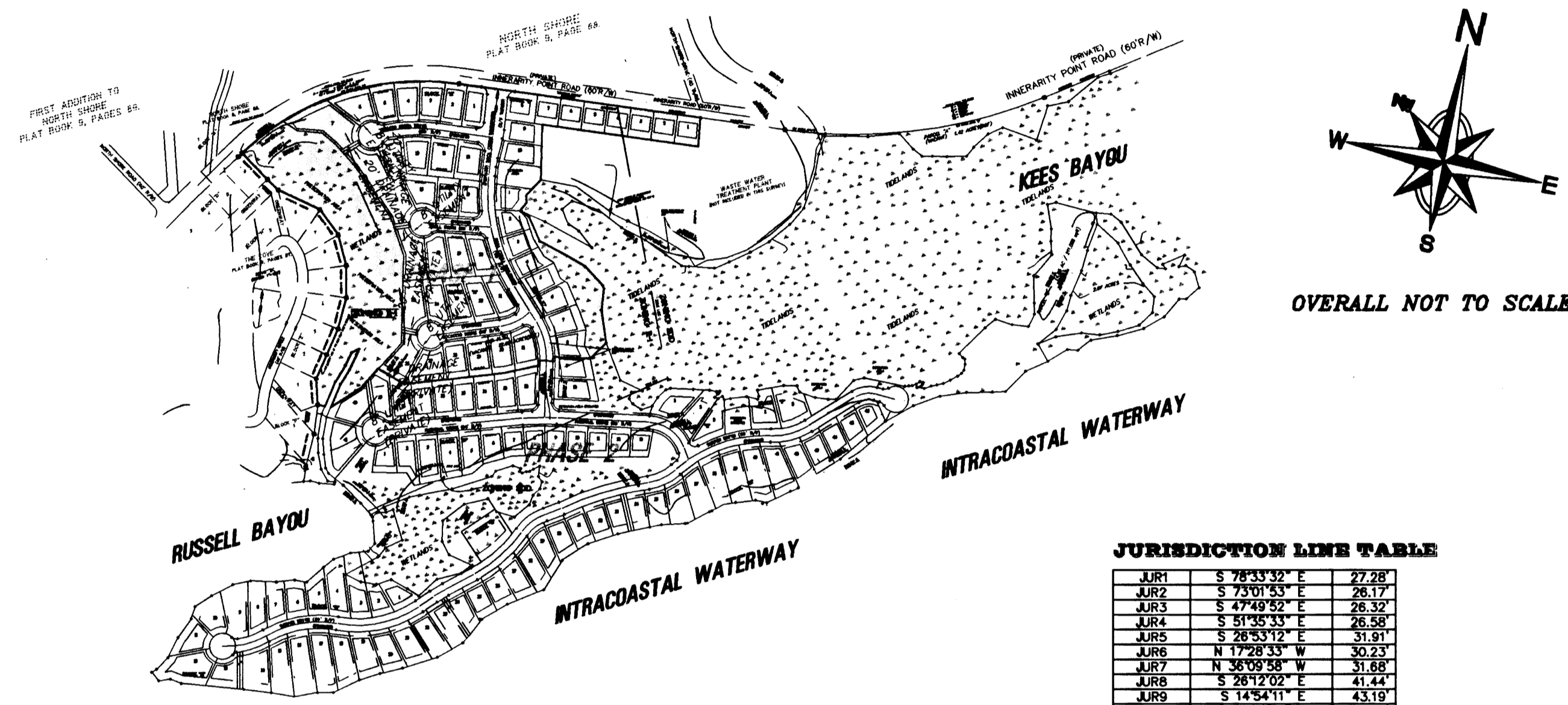
Table with columns for LINE, DISTANCE, and DESCRIPTION. It lists detailed survey data for wetland boundaries.

DESCRIPTION

DESCRIPTION AS PREPARED BY NORTHWEST FLORIDA ENGINEERING AND SURVEYING INC. COMMENCE AT THE SOUTHWEST CORNER OF LOT 1, BLOCK "A",...

RUSSELL BAYOU AT INNERARITY ISLAND PHASE 2

A SUBDIVISION IN A PORTION OF SECTION 15, TOWNSHIP 3 SOUTH, RANGE 32 WEST, JUAN INNERARITY GRANT, ESCAMBA COUNTY, FLORIDA. JUNE 2001



JURISDICTION LINE TABLE with columns for JURISDICTION, X, Y, and Z coordinates.

GENERAL NOTES

- 1. THE PLAT AS SHOWN HEREON WAS PREPARED BY NORTHWEST FLORIDA ENGINEERING AND SURVEYING, INC. 2. THE MEASUREMENTS AS SHOWN HEREON WERE MADE TO THE STANDARDS...

CERTIFICATE OF APPROVALS

Notarized signatures and dates for the Director of Growth Management and County Engineer.

NOTICE: THIS PLAT, AS RECORDED IN ITS GRAPHIC FORM, IS THE OFFICIAL DEFINITION OF THE SUBDIVIDED LANDS DESCRIBED HEREIN...

DEDICATION: KNOW ALL MEN BY THESE PRESENTS THAT RUSSELL BAYOU CORPORATION, A FLORIDA CORPORATION, AND FAYETTE DENNISON (OWNER OF LOTS 10, 11 AND 12, BLOCK "A")...

SIGNED, SEALED AND DELIVERED IN THE PRESENCE OF: WITNESSES and signatures for Russell Bayou Corporation and Fayette Dennison.

NOTARY PUBLIC

STATE OF FLORIDA, COUNTY OF ESCAMBA. I, ERNE LEE MAGAÑA, 2001 WAS ACKNOWLEDGED BEFORE ME THIS 21st DAY OF MAY...

CERTIFICATE OF APPROVAL OF CLERK OF THE CIRCUIT COURT

I, ERNE LEE MAGAÑA, CLERK OF THE CIRCUIT COURT OF ESCAMBA COUNTY, FLORIDA, HEREBY CERTIFY THAT THE WITHIN PLAT COMPLIES WITH ALL THE REQUIREMENTS...

CERTIFICATE OF APPROVAL OF COUNTY COMMISSIONERS

I, ERNE LEE MAGAÑA, CLERK OF THE CIRCUIT COURT OF ESCAMBA COUNTY, FLORIDA, HEREBY CERTIFY THAT THE WITHIN PLAT COMPLIES WITH ALL THE REQUIREMENTS...

ENGINEER'S CERTIFICATE

I, JAMES L. BAYNES, JR., P.E., HEREBY CERTIFY THAT I AM THE ENGINEER OF RECORD FOR RUSSELL BAYOU AT INNERARITY ISLAND PHASE 2...

SURVEYOR'S CERTIFICATE

THIS PLAT IS A TRUE AND CORRECT REPRESENTATION OF THE LAND SURVEYED AND WAS PREPARED UNDER MY DIRECTION AND SUPERVISION...

CERTIFICATE OF ATTORNEY

I, JAMES M. WEBER, AS A MEMBER OF THE FLORIDA BAR, AND ON BEHALF OF RUSSELL BAYOU CORPORATION, HEREBY CERTIFY THAT I HAVE EXAMINED THE PLAT HEREON...

NORTHWEST FLORIDA ENGINEERING & SURVEYING, INC. A PROFESSIONAL SERVICE ORGANIZATION. 1500 N. PALAFOX ST. PENSACOLA, FL 32501. (850) 432-1062

RUSSELL BAYOU AT INNERARITY ISLAND PHASE 2 SHEET 1 OF 2 PLAT BOOK 17, PAGE 22