

DEED LINE TABLE

LINE	DIRECTION	DISTANCE
11	N87°56'30" W	26.85
12	N87°56'30" W	26.85
13	S01°52'30" E	18.77
14	N87°56'30" W	26.85
15	N87°56'30" W	26.85
16	N87°56'30" W	26.85
17	N87°56'30" W	26.85
18	N87°56'30" W	26.85
19	S93°56'30" W	11.60
20	S89°56'30" W	7.90
21	S85°56'30" W	7.90
22	S81°56'30" W	7.90
23	S77°56'30" W	7.90
24	S73°56'30" W	7.90
25	S69°56'30" W	7.90
26	S65°56'30" W	7.90
27	S61°56'30" W	7.90
28	S57°56'30" W	7.90
29	S53°56'30" W	7.90
30	S49°56'30" W	7.90
31	S45°56'30" W	7.90
32	S41°56'30" W	7.90
33	S37°56'30" W	7.90
34	S33°56'30" W	7.90
35	S29°56'30" W	7.90
36	S25°56'30" W	7.90
37	S21°56'30" W	7.90
38	S17°56'30" W	7.90
39	S13°56'30" W	7.90
40	S09°56'30" W	7.90
41	S05°56'30" W	7.90
42	S01°56'30" W	7.90
43	S01°56'30" W	7.90
44	S01°56'30" W	7.90
45	S01°56'30" W	7.90
46	S01°56'30" W	7.90
47	S01°56'30" W	7.90
48	S01°56'30" W	7.90
49	S01°56'30" W	7.90
50	S01°56'30" W	7.90

CURVE INFORMATION

CHORD	RADIUS	LENGTH	CHORD BEARING	DELTA
CL1	100.00	157.08	N87°56'30" W	157.08
CL2	100.00	157.08	N87°56'30" W	157.08
CL3	100.00	157.08	N87°56'30" W	157.08
CL4	100.00	157.08	N87°56'30" W	157.08
CL5	100.00	157.08	N87°56'30" W	157.08
CL6	100.00	157.08	N87°56'30" W	157.08
CL7	100.00	157.08	N87°56'30" W	157.08
CL8	100.00	157.08	N87°56'30" W	157.08
CL9	100.00	157.08	N87°56'30" W	157.08
CL10	100.00	157.08	N87°56'30" W	157.08
CL11	100.00	157.08	N87°56'30" W	157.08
CL12	100.00	157.08	N87°56'30" W	157.08
CL13	100.00	157.08	N87°56'30" W	157.08
CL14	100.00	157.08	N87°56'30" W	157.08
CL15	100.00	157.08	N87°56'30" W	157.08
CL16	100.00	157.08	N87°56'30" W	157.08
CL17	100.00	157.08	N87°56'30" W	157.08
CL18	100.00	157.08	N87°56'30" W	157.08
CL19	100.00	157.08	N87°56'30" W	157.08
CL20	100.00	157.08	N87°56'30" W	157.08

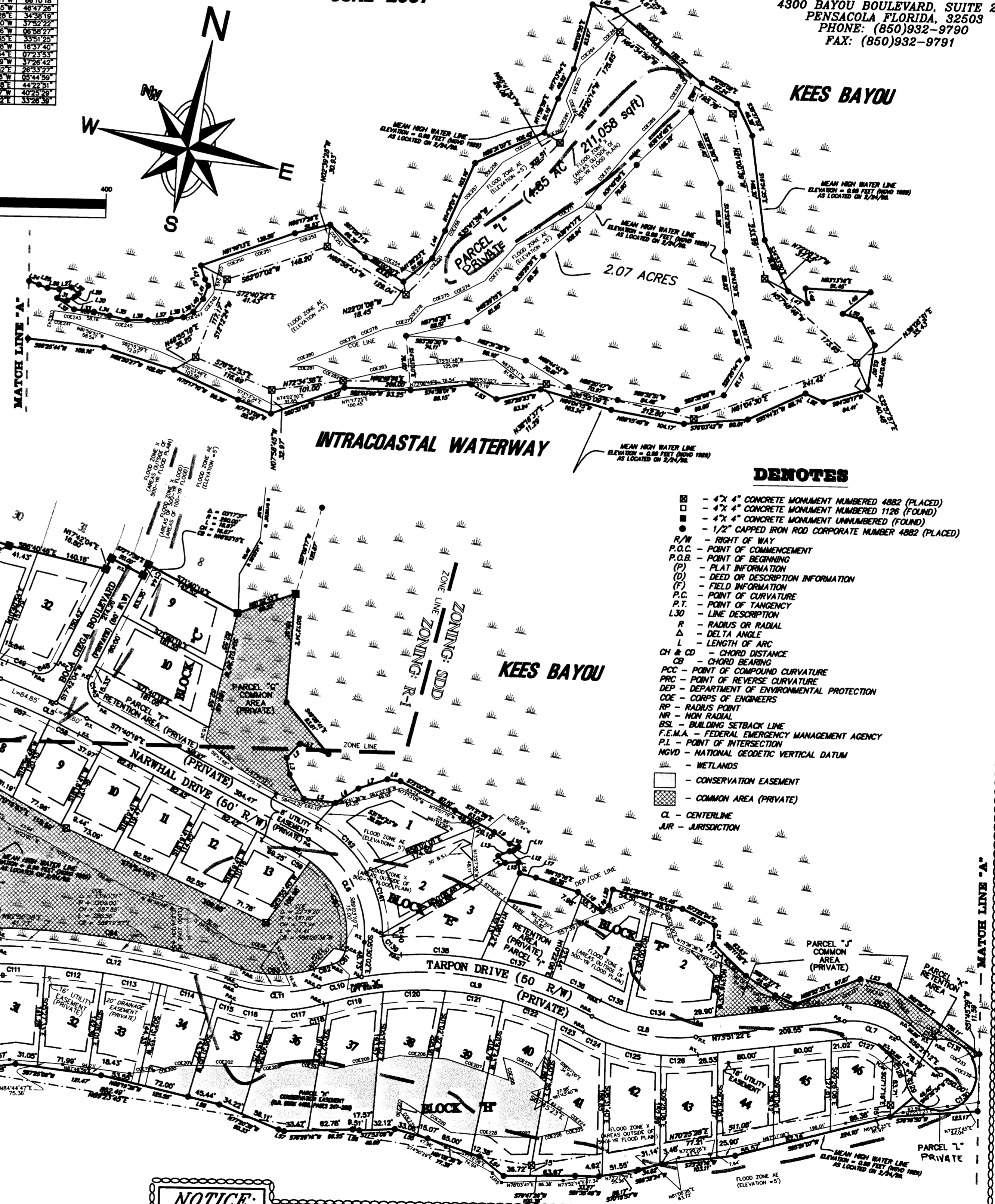
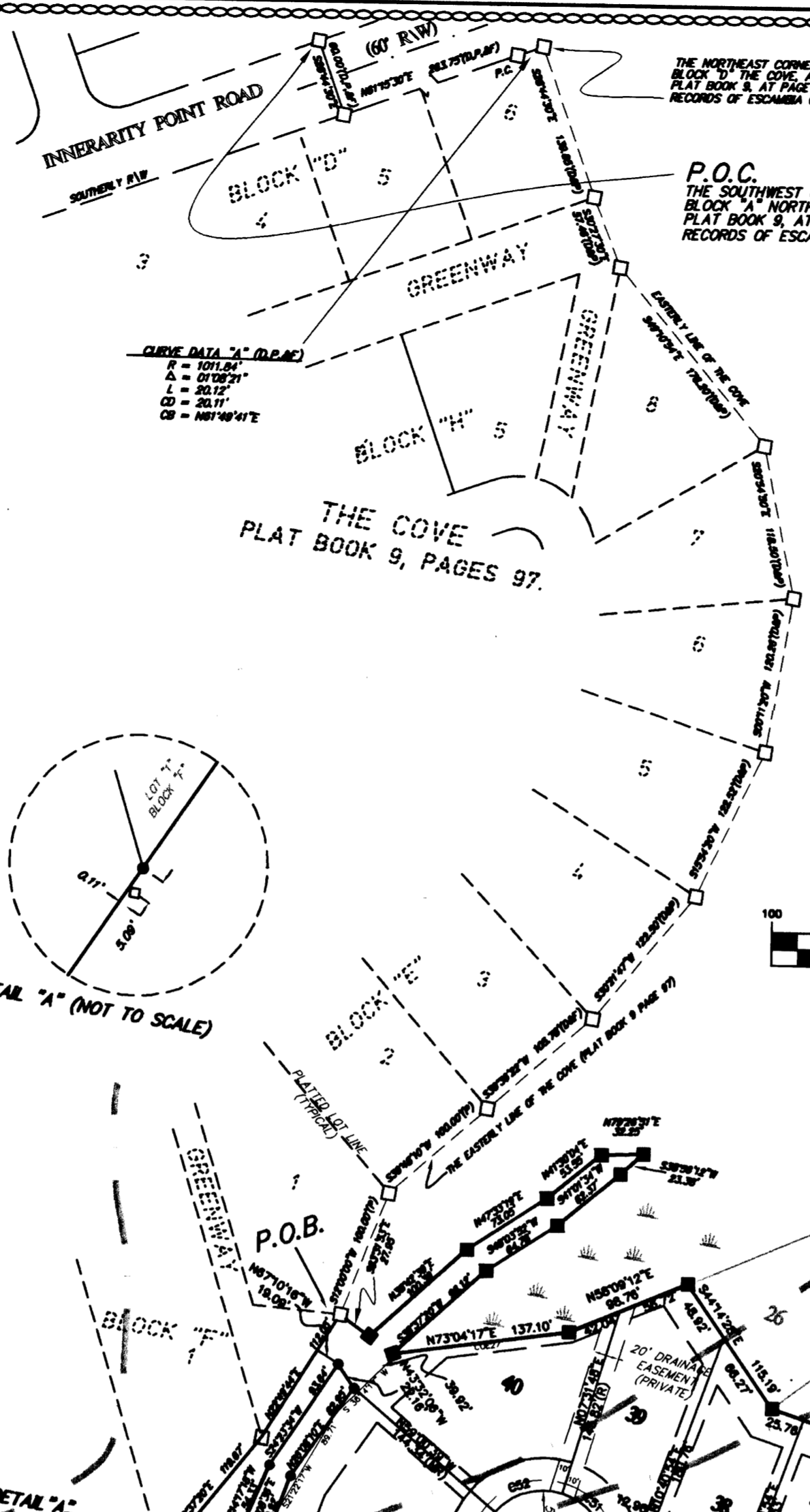
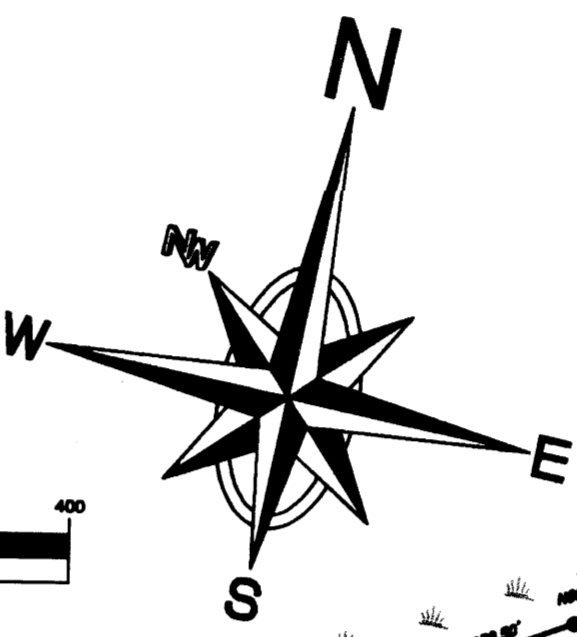
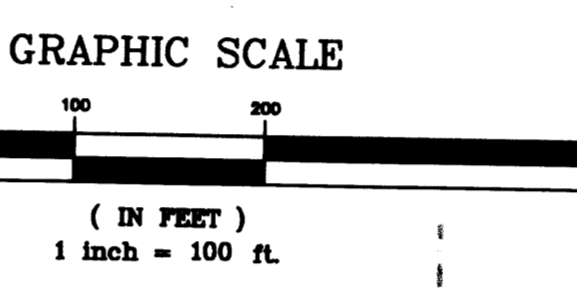
A RECORD PLAT OF RUSSELL BAYOU AT INNERARITY ISLAND PHASE 2

A SUBDIVISION IN A PORTION OF SECTION 15, TOWNSHIP 3 SOUTH, RANGE 32 WEST,
JUAN INNERARITY GRANT, ESCAMBIA COUNTY, FLORIDA.
JUNE 2001

OWNER & DEVELOPER
RUSSELL BAYOU CORPORATION
4300 BAYOU BOULEVARD, SUITE 21
PENSACOLA, FLORIDA 32503
PHONE: (850) 932-9790
FAX: (850) 932-9791

CENTERLINE CURVE DATA

CL	TYPE	START	END	CHORD	DELTA
CL1	100.00	157.08	N87°56'30" W	157.08	157.08
CL2	100.00	157.08	N87°56'30" W	157.08	157.08
CL3	100.00	157.08	N87°56'30" W	157.08	157.08
CL4	100.00	157.08	N87°56'30" W	157.08	157.08
CL5	100.00	157.08	N87°56'30" W	157.08	157.08
CL6	100.00	157.08	N87°56'30" W	157.08	157.08
CL7	100.00	157.08	N87°56'30" W	157.08	157.08
CL8	100.00	157.08	N87°56'30" W	157.08	157.08
CL9	100.00	157.08	N87°56'30" W	157.08	157.08
CL10	100.00	157.08	N87°56'30" W	157.08	157.08
CL11	100.00	157.08	N87°56'30" W	157.08	157.08
CL12	100.00	157.08	N87°56'30" W	157.08	157.08
CL13	100.00	157.08	N87°56'30" W	157.08	157.08
CL14	100.00	157.08	N87°56'30" W	157.08	157.08
CL15	100.00	157.08	N87°56'30" W	157.08	157.08
CL16	100.00	157.08	N87°56'30" W	157.08	157.08
CL17	100.00	157.08	N87°56'30" W	157.08	157.08
CL18	100.00	157.08	N87°56'30" W	157.08	157.08
CL19	100.00	157.08	N87°56'30" W	157.08	157.08
CL20	100.00	157.08	N87°56'30" W	157.08	157.08



- DENOTES**
- - 4" x 4" CONCRETE MONUMENT NUMBERED 4882 (PLACED)
 - - 4" x 4" CONCRETE MONUMENT NUMBERED 1126 (FOUND)
 - - 4" x 4" CONCRETE MONUMENT UNNUMBERED (FOUND)
 - - 1/2" CAPPED IRON ROD CORPORATE NUMBER 4882 (PLACED)
 - R/W - RIGHT OF WAY
 - P.O.C. - POINT OF COMMENCEMENT
 - P.O.B. - POINT OF BEGINNING
 - (P) - PLAT INFORMATION
 - (D) - DEED OR DESCRIPTION INFORMATION
 - (F) - FIELD INFORMATION
 - P.C. - POINT OF CURVATURE
 - P.T. - POINT OF TANGENCY
 - L30 - LINE DESCRIPTION
 - R - RADIUS OR RADIAL
 - Δ - DELTA ANGLE
 - L - LENGTH OF ARC
 - CH & CD - CHORD DISTANCE
 - CB - CHORD BEARING
 - PCC - POINT OF COMPOUND CURVATURE
 - PRC - POINT OF REVERSE CURVATURE
 - DEP. - DEPARTMENT OF ENVIRONMENTAL PROTECTION
 - COE - CORPS OF ENGINEERS
 - RP - RADIUS POINT
 - NR - NON RADIAL
 - BSL - BUILDING SETBACK LINE
 - F.E.M.A. - FEDERAL EMERGENCY MANAGEMENT AGENCY
 - P.I. - POINT OF INTERSECTION
 - NOVD - NATIONAL GEODETIC VERTICAL DATUM
 - - WETLANDS
 - - CONSERVATION EASEMENT
 - - COMMON AREA (PRIVATE)
 - CL - CENTERLINE
 - J.R. - JURISDICTION

NW NORTHWEST FLORIDA ENGINEERING & SURVEYING, INC.
A PROFESSIONAL SERVICE ORGANIZATION
1500 N. Palafox St.
Pensacola, FL 32501
(850) 432-1062

105 Willing St.
Milton, FL 32570
(850) 626-9270

INTRACOASTAL WATERWAY

NOTICE:
- THIS PLAT, AS RECORDED IN ITS GRAPHIC FORM, IS THE OFFICIAL DEPICTION OF THE SUBDIVIDED LANDS DESCRIBED HEREIN AND WILL IN NO CIRCUMSTANCES BE SUPPLANTED IN AUTHORITY BY ANY OTHER GRAPHIC OR DIGITAL FORM OF THE PLAT.
- THERE MAY BE ADDITIONAL RESTRICTIONS THAT ARE NOT RECORDED ON THIS PLAT THAT MAY BE FOUND IN THE PUBLIC RECORDS OF ESCAMBIA COUNTY, FLORIDA

RUSSELL BAYOU AT INNERARITY ISLAND PHASE 2
SHEET 2 OF 2

RESTRICTIVE COVENANTS,
OFFICIAL RECORDS BOOK 4719, PAGE(S) 501
PLAT BOOK 17, PAGE 22A

PB 17 P 22A