



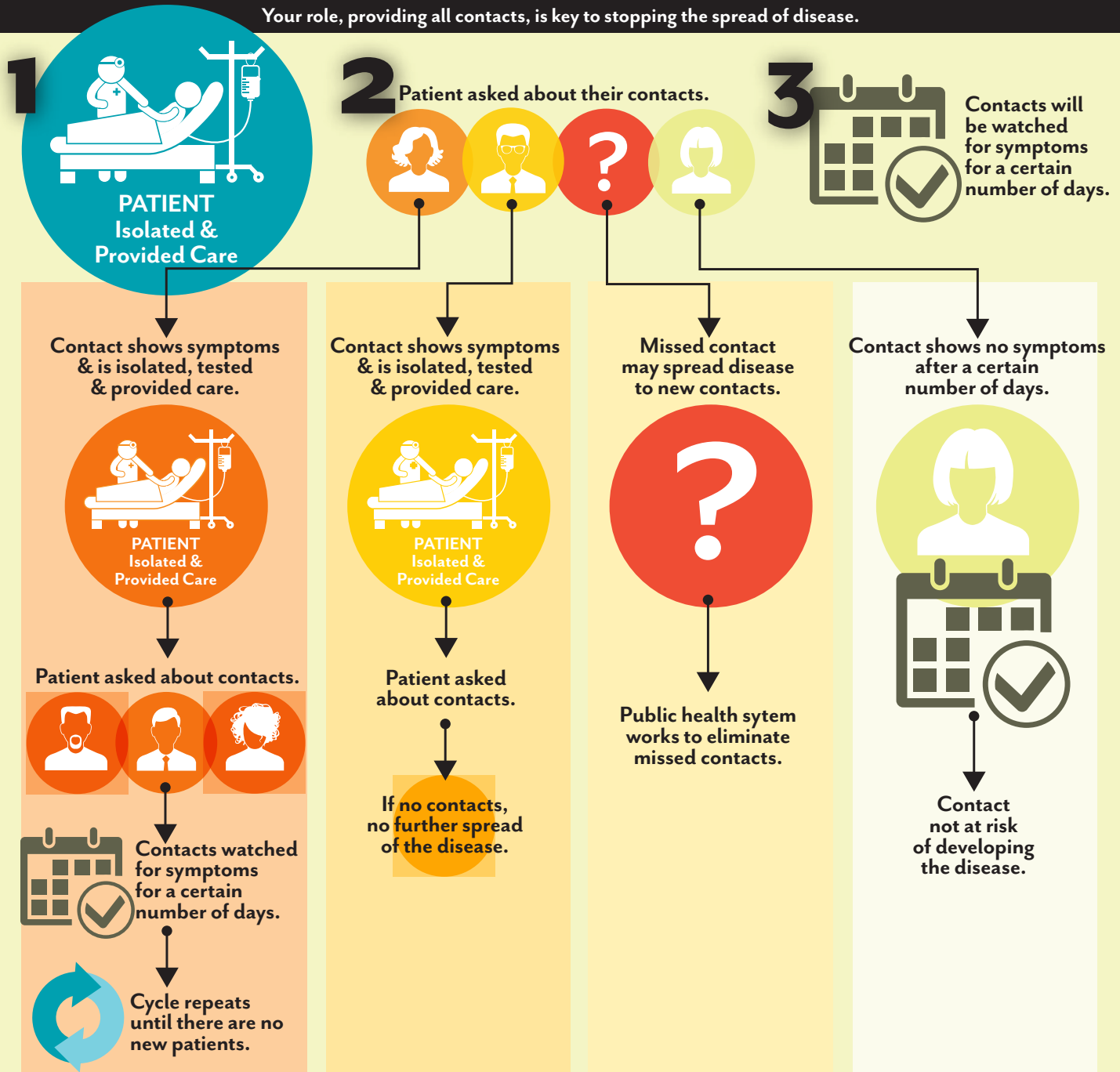
Contact Tracing Can Contain Infectious Disease Outbreaks

FloridaHealth.gov • Florida Department of Health

If you are diagnosed with a certain disease, you will be asked by a local public official—an epidemiologist—about everyone with whom you have had contact. The epidemiologist will talk to each person and ask them about their health. This is called contact tracing and is a core public health function.

- Contact tracing tracks and prevents the spread of disease.
- Epidemiologists find everyone who has been in contact with the sick person.
- Contacts are watched for symptoms for a certain number of days.

Your role, providing all contacts, is key to stopping the spread of disease.



Local county contact information can be found at FloridaHealth.gov.