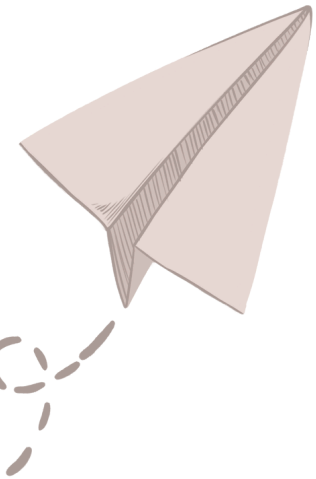
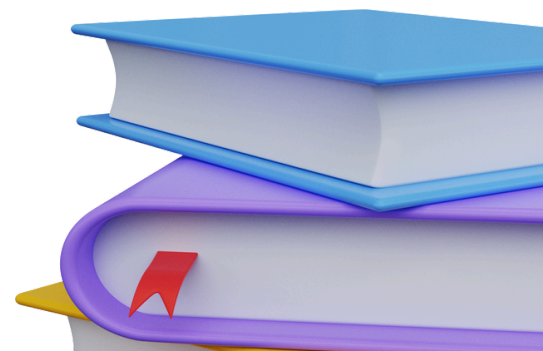


5 SIGNS YOUR CHILD IS IN THE WRONG SCHOOL



Your child only gets one chance at childhood—
make sure they're in the right place to thrive.



Are you seeing the **SIGNS**

Choosing the right school is one of the most important decisions you'll ever make for your child.

Sometimes, the signs that a school isn't the right fit are subtle—but they can have a lasting impact.

Here's how to know when it's time to explore a better option.



SIGN 1 Your Child Dreads Going to School

If mornings are filled with anxiety, tears, or refusal, your child may not feel seen or safe in their current environment.

SIGN 2 Your Child Says They're Bored or "Not Learning Anything"

When the school isn't meeting their learning pace—either too slow or too fast—kids quickly disengage.

SIGN 3 Large Class Sizes Mean Your Child Gets Lost

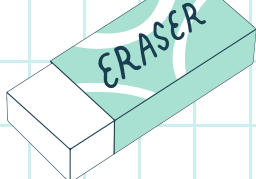

In classrooms with 25+ students, it's almost impossible for teachers to give each child the attention they deserve.

SIGN 4 You're Not Aligned With the School's Values

If the school's culture, teaching style, or disciplinary approach doesn't match your family's priorities, it can create frustration at home and at school.

SIGN 5 Your Child Isn't Growing in Confidence

A great school helps your child feel capable, valued, and excited to grow. If your child's self-esteem is shrinking instead of blossoming, something's wrong.



What If There's a School That's the Right Fit?

At Warda Foundation Academy, we help children love learning again.

We grow courage, build confidence, and meet students exactly where they are.



Small Class Sizes

Student-Led Pacing



Weekly Field Trips

Life Skills Enrichment Program

Schedule a Tour Today and See the Difference.



810-354-8046