

# PRINT, GRAPHICS, SIGNS & BANNERS

## 2025 Catalog

SBE CERTIFIED PRINT SERVICE PROVIDER



Google Street View  
trusted

### Print Graphics

**Apparel** Embroidery Signs  
Social Media Video  
& Virtual Reality

**PUBLICIDAD IMPRESA  
Y DIGITAL**

CHECK  
OUT OUR  
**5 STARS**  
REVIEWS  
ON GOOGLE



Heavy Duty Aluminum Signs  
Custom Tow Signage

PICKUP • UPS SHIPPING • DELIVERY  
TO YOU FOB SHIPPING POINT

HOMESTEAD OFFICE PARK  
NOW LEASING OFFICES  
On-site management  
(305) 988-6400  
HomesteadOffice@LeoniCompanies.com

TRITECH  
(305) 7...

MARLIN



## One-Stop PRINTING SERVICES



[www.printwebandsocialmediadesignbymarthamelo.com/view-catalog-2025](http://www.printwebandsocialmediadesignbymarthamelo.com/view-catalog-2025)



[www.printwebandsocialmediadesignbymarthamelo.com](http://www.printwebandsocialmediadesignbymarthamelo.com)

**PWSMD By Martha Melo**  
**SBE Certified Print Services with +30 years of experience**

Our company provides services for signs, banners, and large-format printing for several fields, industries, and organizations such as Safety Construction signs and Banners, Directional Way-Finding signage for buildings, Parking Tow Signs, Real Estate, Apartments, and HOA Signs, and Large-Format Printing for Education, Government, Financial, and Healthcare institutions. We also offer Signs for Political Campaigns, Legal branding, Restaurant Advertising, Retail POP, Event Trade-Show Exhibits, Vehicle Graphics, Carbonless Forms, Embroidery, Screen Printing Apparel, Promotional Products, Envelopes, Business Cards, EDDM Mailer Cards, Postcards, Flyers, Brochures, Folders, and more!

**PWSMD Online Catalog - Exhibit & Display Products**

We provide Professional Project Management, Graphic Design, Print Production, and Installation processes from start to completion. We have a selection of signs and banners printed with premium materials such as rigid, fabric, vinyl, or mesh. Find all you need in one place, from POP displays and event information to way finders and safety signs. We print High-quality materials to produce your signs, banners, and large-format jobs to promote your business and services.

<https://pwsmdbymarthamelocapabilitystatement.com>

**TESTIMONIAL**

Lucia Soria - President Of Ram-Tech Construction  
Thank you for support local Small Businesses





# PRODUCTS GUIDE

## **Aluminum Heavy Duty .080in. White** [Page 4](#)

Aluminum Sandwich Board 3mm - White (Maxmetal®) [Page 4](#)

Aluminum 0.045" - Gloss [Page 5](#)

Aluminum 0.045" Dye Sub [Page 5](#)

Coroplast 4mm White Plastic [Page 6 & 7](#)

Coroplast 10mm White Plastic [Page 6 & 7](#)

A-Frame (Sidewalk Signs) 2 inserts 4mm White Coroplast [Page 8](#)

PVC 3mm [Page 9 & 10](#)

Acrylic Sign - 1/4" Clear (Transparent Acrylic) [Page 11](#)

White Styrene 0.015 inch [Page 11](#)

**Backdrops With Stand** (Hardware) 13oz Scrim Vinyl - Outdoor [Page 12](#)

**Outdoor Banners** 13oz Scrim Vinyl [Page 13](#)

Mesh Banner - 8oz Outdoor [Page 13](#)

**79oz Polyester - 10X10 Tents** [Page 14](#)

13oz Scrim Vinyl - Outdoor Banners For Events

Outdoor Banner Stands - Collapsible Light-weight [Page 15](#)

Standard Retractable Banner Stand - 10mil Smooth Banners (Indoor) [Page 15](#)

Tube Displays - 9oz Fabric [Page 16](#)

Tabletop Retractable Displays - 10mil Smooth Banner [Page 16](#)

**Retractable Banner Luxury Premium Stand**

10mil Smooth Banners (Indoor) [Page 17](#)

Smooth Banner Material 10mil [Page 17](#)

Table Covers 9oz Polyester [Page 18](#)

Table Cover Knit Fabric 8.11oz Polyester [Page 18](#)

Feather Flags 3oz Polyester (one or two sided) [Page 19](#)

Pole Flags 3oz Polyester [Page 19](#)

**Car Magnets** 30mil Full-color [Page 20](#)

Canvas - 17mil Artist Canvas [Page 21](#)

Fabric Banners - 9oz Polyester Premium [Page 21](#)

Fabric Banners - 8.11oz Polyester Knit Fabric [Page 21](#)

**Window, Decals, Cut Vinyl, & Perforated** [Page 22](#)

**Vehicle Lettering** -Car Wraps [Page 23](#)

8mil Photo Poster - Gloss

8oz Mesh Banner - Outdoor

9mil Backlit - Matte

9oz Premium Polyester

74oz Polyester

**HOW TO ORDER** ([Click here](#))

# METAL SIGNS

## Custom Printed Aluminum Signs



### Aluminum Heavy Duty

Full Color CMYK printing on a sturdy, rust-proof 0.08" heavy duty aluminum for maximum outdoor or indoor durability. Available in a variety of sizes with round corners, straight corners.

#### Weather Conditions

Heavy duty

#### Optional:

Drill holes and  
Standoffs Hardware

#### Bleed

Extra color to edges: Yes  
Please add 0.5" of bleed all around your artwork.

#### Locations availability

One single sided

#### 4mm Coroplast Sign popular uses

- Tow Away Area Signs
- HOA Signs
- Metal Signs For Business
- Stop Custom Signs
- Safety Signs
- Real estate Signs
- Healthcare
- Educational Institutions
- Retail

#### Available Sizes

6"x6" to 46"x36"

# METAL SIGNS



## Aluminum Dye Sub

Printed using dye-sublimation on white gloss 0.045" aluminum panels. The dye sublimation on aluminum printing process results in outstanding image clarity and color vibrance offering high-definition images for photography and display artwork. Drill hole and Hardware available

### 4mm Coroplast Sign popular uses

- Personal, Business Office, and Event Signage
- Healthcare
- Art museums
- Travel & Hospitality

### Dimensions

Width from 6" to 42"

Height from 6" to 36"

### Bleed: Yes

Please add 0.5" of bleed all around your artwork.



## Aluminum Sandwich Board (Maxmetal®)

The board signs are composed of two .012" aluminum sheets with a polyethylene core, resulting in a total thickness of 1/8" (3mm). Suitable for both indoor and outdoor use, they are produced using UV inks on pre-painted white or brushed silver signs with optional drill holes for easy attachment to posts, fences, or surfaces. Their supreme durability makes them ideal for long-term use in healthcare, manufacturing, and parking facilities.

### Dimensions

Width from 6" to 36"

Height from 6" to 46"

# COROPLAST

## Corrugated Signs



### Yard Signs

Full-color CMYK printing on rigid white corrugated plastic with optional metal grommets. Durable enough with UV-cured inks and waterproof durability to be staked outdoors.

#### Coroplast Signs popular uses

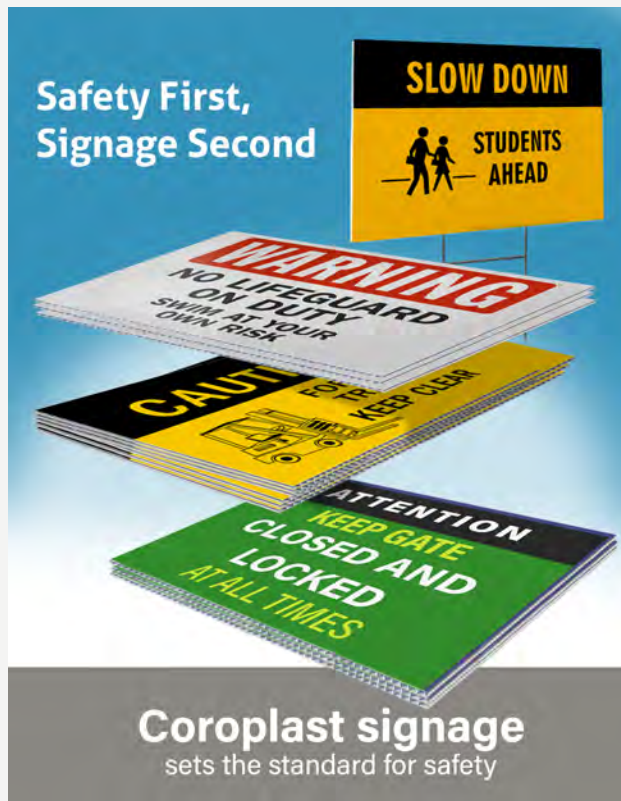
- Safety
- Promotional
- Directional
- Events
- Political
- Real estate
- Healthcare
- Educational Institutions
- Retail



# WHITE COROPLAST Plastic Signs



PWSMD's custom Corrugated White Plastic Signs are perfect for outdoor or indoor use. Durable, lightweight and waterproof, cost-effective solution for large advertising needs in neighborhoods around your business, real estate, political campaigns and more!



## Colors

Full-Color process (CMYK)

## Weather Conditions

At regular temperatures, oils, solvents, and water do not affect the coroplast material, which also lends nicely to the endurance of the sign.

## Add Metal H-stakes

order with vertical flutes\*

## Bleed

Yes, please add 0.5" all around to your artwork.

## Locations:

One single sided 4/0

Two Sided 4/4

## Dimensions:

Available sizes 6"x6" to 46"x36"

## Thickness

4mm (Political, Events, and Safety)

10mm (Outdoor Real Estate Signs)

## Contour Cut:

Yes\* (Only One single-sided)\*

Size 6"x6" to 46"x36"

# A-FRAMES

## Sidewalk Signs

### Sandwich Boards (A-Frame)

The interchangeable 4mm Coroplast inserts fits in the durable heavy duty Sidewalk frame. Each insert is printed in full color (please add 0.5" all around for bleed).



#### Specs

##### **Deluxe Sandwich Board**

Includes the frame and 2 inserts each 24" width x 36" height

##### **MDX Sandwich Board\***

Includes the frame and 2 inserts each 18" width x 24" height  
Portrait orientation\*

##### **Quick Sandwich Board\***

Includes the frame and 2 inserts each 24" width x 18" height  
Landscape orientation\*

##### **Full Color:**

Yes (please add 0.5" bleed all around).



24"X36" SANDWICH BOARD



Custom 24x36" A-Frames  
With 2 Promotional Coroplast Inserts

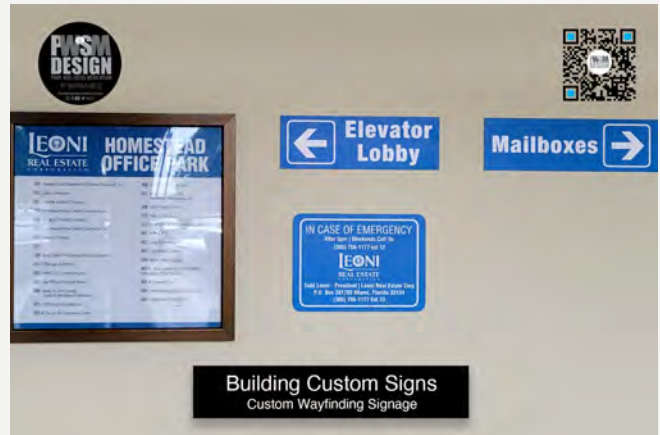


# PVC

## Custom Office & Business Signs



PWSMD's custom PVC Plastic Signs are perfect for outdoor or indoor advertising.



# PVC

## Custom Plastic Signs PVC Photo Prints



### Wayfinding Signage Directional Business Signs

3mm PVC Signs (1/8" thickness) are printed on a smooth, vibrant, white rigid plastic that is lightweight and durable and weather resistant. Great for both indoor and outdoor use, with a low-glare matte appearance, the PVC provides High-Quality prints and boards whether viewed from a distance or up close.

#### Dimensions:

6"x6" to 46"x36"

One single sided

#### Silver Standoffs and Hardware:

Optional top (2) or on each corner (4)

Please add to your artwork 0.5" of bleed all around. Full Color process (CMYK)

Check out also: White PVC Counter Cards



# ACRYLIC, SYNTHETIC & CANVAS Decor Signs



## 1/4" Clear Acrylic

Clear Acrylic signs offer translucence, glass-like clear look. Material is lighter and more durable than glass. High-Quality Print Materials with a sophisticated and stylish finished look to make your brand stand out.

### Dimensions

6"x6" to 46"x36"

One single sided

### Silver Standoffs and Hardware:

Optional top (2) or on each corner (4)

Please add to your artwork 0.5" of bleed all around. Full Color process (CMYK)



## Synthetic - Waterproof .015"

White Matte finish, synthetic material printed on a .015" (15mil) matte white polyethylene substrate. Flexible and suitable for indoor and temporary outdoor signage

### Dimensions

Width from 6" to 48"

Height from 6" to 120"

One single sided

Please add to your artwork 0.5" of bleed all around.

Full Color process (CMYK)

# EVENT BANNERS

## Backdrops, Trade Show Displays, & Step & Repeat Banners



### Backdrop Banner Stands

Custom-printed, full-color CMYK graphics are printed on durable 13oz scrim vinyl. Easy setup and take down as well. This is a great option for indoor and outdoor events.

**Dimensions:**

95" x 96"

**Hardware**

8 x 10 Telescopic Banner Stand" includes carrying case.



### Outdoor Booth Banners

Outdoor Banners printed on Waterproof, durable 13oz scrim vinyl with UV-cured inks these banners are waterproof.

**Dimensions**

Width from 12" to 192"

Height from 12" to 1800"

**Finish options:**

Pole Pockets

Grommets and Hems

Velcro

Rope

D-Rings

# CUSTOM BANNERS

## Outdoor Scrim Vinyl & 8oz Mesh



### 8oz Mesh Vinyl Banners

The Mesh Banners are economical, light 8oz mesh vinyl Produced on 8oz mesh vinyl to allow 37% airflow through, these banners are the ideal choice for outdoor signage in a wide range of settings.

Please note: because the banner is comprised of perforated/mesh material, it will appear slightly more transparent than traditional vinyl banners.

#### Dimensions

Width from 12" to 120"  
Height from 12" to 360"

#### Finish options:

Pole Pockets  
Grommets and Hems



# EVENT TENTS

## Fabric Canopy, & Aluminum Frame



### 10'X10' Tent Fabric 790z Polyester

The full color Event tents are the perfect large-scale marketing medium to get noticed at festivals, conventions, trade shows, and more.

**Imprint Area:**  
Color extended to edges  
(please include the bleed)

**Template available:** Yes  
We provide a template with instructions for setup.

Event tents are printed in CMYK color format with UV ink technology on 7.9oz water-repellent fabric. Tents include 4 fabric panels and can feature up to 4 different designs (one for each side).

#### **Dimensions:**

120" x 120"

### Outdoor Booth Banners

Outdoor Banners printed on Waterproof, durable 13oz scrim vinyl with UV-cured inks these banners are waterproof.

#### **Dimensions**

Width from 12" to 192"

Height from 12" to 1800"

#### **Finish options:**

Pole Pockets, Grommets and Hems, Velcro Rope or D-Rings



# BANNER STANDS

## Trade Show Exhibits, Pop UP Displays



### Outdoor Light-weight Banner Stands

The outdoor version is a custom-printed, grommeted banner, printed in full-color CMYK graphics on durable 13oz scrim vinyl. An excellent and economical way for all your outdoor events.

This product is also available on 10mil indoor vinyl with near-photo quality.

#### Dimensions:

24" x 60"

#### Hardware:

Includes collapsible banner stand and carrying case.



Light Weight Collapsible Banner  
Outdoor and Indoor Event Banners



Standard Retractable Banner  
Pop up Retractable Banners (Roll Up)

### Standard Retractable (Indoor)

Our Retractable Banner helps showcase your products and services with a pull-up POP display. This stand includes a full-color retractable banner printed on 10mil indoor vinyl, loaded in a sturdy economical aluminum base. Comes with a carrying case.

#### Available Sizes:

33" x 80"

# BANNER STANDS

## Fabric Tube Displays

## Tabletop Displays



### Dye sublimation on 90z polyester

Fabric Tube Display feature high quality graphics printed individually using dye sublimation on 90z Premium Polyester Fabric. The CMYK color process print vibrant images! these displays are sewn together to create a double-sided display. You have also the option are interchangeable, and cannot be missed as they a

The display comes with carrying case. Travel and setup is easy. Weight with fabric: 14 - 18 lbs

#### Available Sizes:

24"x90", 36"x90", and 48"x90"

Bleed: 0.125" (0.625 on each side)

## Pop-Up Banner Stands In Tabletop Display Size

Available in a variety of tabletop-friendly sizes, these retractable banners are printed on 10mil premium smooth bannner (indoor vinyl). These promotional products are great for trade-show, university orientations, and indoor events of all kinds.

High-Quality Print Materials with a sophisticated and stylish finished look to make your brand stand out.

#### Available Sizes:

11" x 17"

15.75" x 32"

8.25" x 12"



# BANNER STANDS

## Pop UP Displays & Retractable Banners



### Premium Retractable Stand

The Premium Retractable Banner Stands is a more stylish alternative to our Standard Retractable. The base is bigger with chrome accents. Printed in full-color CMYK process, the pull-up banner printed on premium indoor smooth banner is a great option to show-case to promote your products or services. Collapsible and portable, with carrying case.

**Dimensions:**  
33"x80"

### Smooth, Matte Finish 10oz Vinyl

The premium smooth banner is great for displaying graphics indoors. The vibrant CMYK color process is high-quality printing, ensuring that your artwork stand out. *Note: these banners are not scuff resistant or waterproof.*

**Dimensions:** Width from 12" to 58"  
Height from 12" to 120"

Optional:

- No Grommets
- Corners Only
- Every 2 ft.



# TABLE COVER

## 8' or 6' Printed Tablecloths



### Table Covers 9oz Polyester

Table Throws and Runners are printed on Premium 9oz Polyester and produced with superior quality dye sublimation equipment for long lasting color. Fully customizable across the surface, they add a finished look to table displays, trade-show booths, and more. Wrinkle-resistant for easy care. Dry-cleaning is recommended for long lasting usage.

#### Available Sizes:

Table Throws  
132"x90"  
and 156"x90"

Table Runners  
24"x84"  
to 60"x84"



### 8.11oz Polyester – Knit Fabric

This lightweight fabric is made of Poly-blend fibers. Unique sublimation dyes are transferred to a very smooth texture in CMYK Color process.

#### Dimensions

Width from 12" to 56" (including bleed 60")  
Height from 12" to 360"

At PWSMD we have a full Cut & Sew service, ask for details.



# FLAGS PRINTING

## Flag Marketing

## Custom Outdoor Flags



### Feather Flags (one or two sided)

Produced on 3oz polyester and printed using superior dye sublimation equipment for the longest lasting color available, this Flag is great to promote your business and services.

Available: indoor or outdoor hardware. Flags can be folded, stored and assembled with ease.

#### Dimensions

24" x 81" (8 ft)  
32" x 123" (12 ft Regular)  
32" x 99" (10 ft)  
36" x 123" (12 ft Jumbo)  
37" x 161" (15 ft)"s



Template available for left or right pole

### Pole Flags

Produced on 3oz polyester with sublimation process, these flags can be used outdoor or indoor.

Additional:

None (Pole Not Included)  
Pole + Wall Bracket

Imprint area: One single sided  
Please add 0.5" of bleed all around

#### Dimensions

24" x 36"  
36" x 60"  
48" x 72"



# CAR MAGNETS

## Magnetic Signs

## Flexible Size &

## VEHICLE GRAPHICS



CAR MAGNETS - VEHICLE SIGNS

### 30mil Car Magnets

Car door magnets are printed on a heavy-duty glossy material with CMYK full-color process. The mobile advertising is a great tool to maximize brand awareness wherever you go. Car door magnets are ideally suited for vehicles but can also be used on other surfaces like temporary signs at construction sites or any other changing work environments where metal surfaces are present.

#### Company Car Magnets

We offer large car magnets and big car magnets in any size for vehicles. You can start with a blank design or customize our templates to suit your needs. Most popular sizes to fit on standard sedans, SUV's or Pickups:

24"x18"  
and 18"x12"

#### Dimensions:

Width from 9" to 36"  
Height from 9" to 36"

# CANVAS & POLYESTER

## Custom Printed Fabrics



### 17mil Artist Canvas

Printed on lightweight, high-quality 17mil canvas using vibrant CMYK colors, this material is great for all decor, point of sale displays, and your personal photos capturing the same look and feel of an artist's painted canvas. Perfect for both mounting and framing and can be easily rolled into a square tube for safe shipping.

#### Dimensions

Width from 12" to 48"

Height from 12" to 120"

### 9oz Polyester – Premium

These lightweight wrinkle-resistant banners are printed with superior quality dye sublimation equipment in CMYK for long lasting color. Ideal for trade-shows, retail, and other interior applications. Optional pole pockets, grommets, or sewn hems.

#### Dimensions

12"x12" to 110"x360"



### 8.11oz Polyester – Knit Fabric

This lightweight fabric is made of Poly-blend fibers. Unique sublimation dyes are transferred to a very smooth texture in CMYK Color process.

#### Dimensions

Width from 12" to 56" (including bleed 60")

Height from 12" to 360"

At PWSMD we have a full Cut & Sew service, ask for details.

# WINDOW GRAPHICS

## Custom Window, Decals, Cut Vinyl, & Perforated



### Standard Vinyl Graphic

The vibrant CMYK colors are printed on high-quality digital printing. The is for both indoor and outdoor use. The full color adhesive is available for contour cut graphics with matte or gloss lamination.

#### Dimensions:

Width from 6" to 58"

Height from 6" to 120"

#### Cut Vinyl Lettering:

See next page for specs



Window Graphics  
Perforated, Cut Vinyl Graphics and Full Wraps

### See-Through Perforated Window Vinyl Graphic

See-through perforated window vinyl graphics are printed on 6mil white flexible vinyl front with a clear removable acrylic adhesive back. The perforated film allows see-through graphics for retail stores or flat vehicle windows.

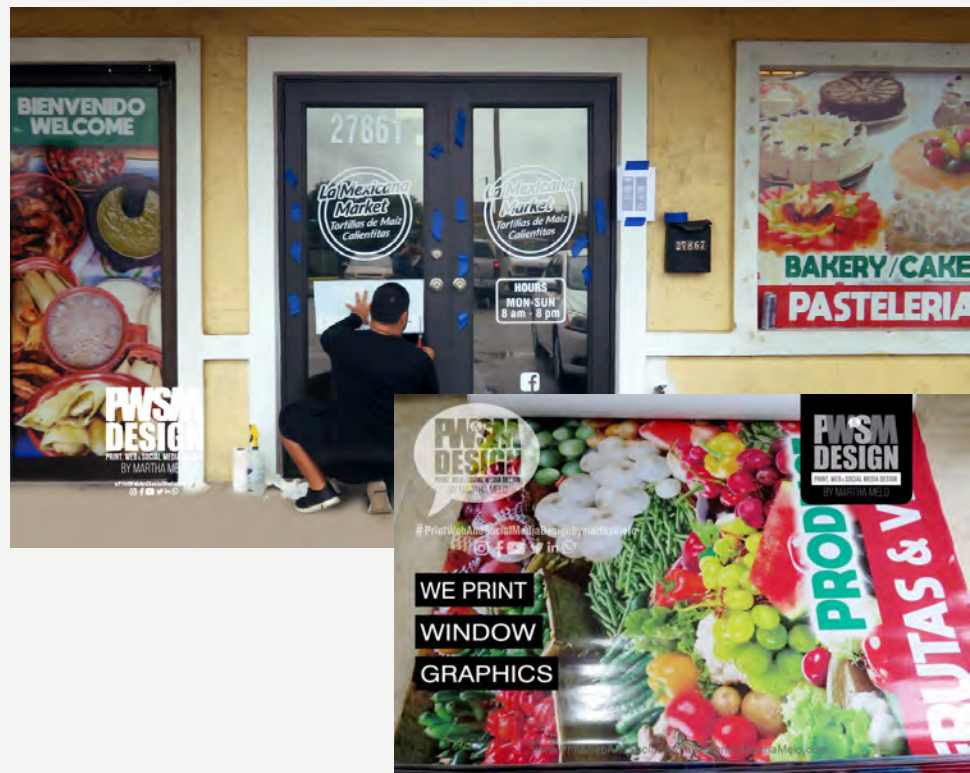
#### Stock:

6mil See through Vinyl

#### Dimensions:

Width from 6" to 58"

Height from 6" to 120"



# VEHICLE LETTERING

## For Trucks, Trailers, Vans and More



### 2.5MIL Cut Vinyl

Cut vinyl adhesive permanent, durable, and aesthetically flexible for a variety of purposes for your vehicle graphics such as DOT's #, Brandings, and services. Available ORACAL® 651 Intermediate Cal ideal for medium-term indoor and outdoor lettering (ask for color chart, and ORACAL® 951 Premium Cast for solid black for long-term indoor & Outdoor cast

#### Dimensions

Width from 12" to 24"

Height from 12" to 120" (50 yards roll)

#### Optional:

Cut Lettering + Partial wraps.

### Full Color Adhesive Vinyl Wraps

Printed on high performance adhesives, from Avery which is made to go over rivets to calendared Arlon we have the right material for all your graphics. We also match the cast lamination for the cast vinyl.

**Lamination:** Gloss or Matte

#### Dimensions:

Imprint area 47.5" on 48" material"  
Height from 6" to 120"

#### Cut Vinyl Lettering:

See above for cut vinyl specs



# PROFESSIONAL SIGNS, HIGH QUALITY PRINTING, AND GRAPHIC DESIGNS SOLUTIONS



Branded Promotional Hats  
Embroidery



Pens - Gold Metallic Imprint  
Uncommon Promotional Gifts



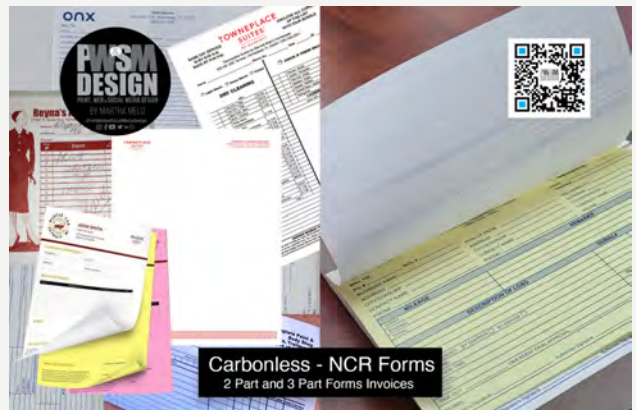
Brochures - Trifold or Bifold  
Promotional Materials & Menus



T-SHIRTS



BUSINESS CARDS



Carbonless - NCR Forms  
2 Part and 3 Part Forms Invoices

## HOW TO ORDER

1. Please send us an email with all specs for your job (quantity, size, and information for your message, etc). You will receive a quote with all the details and pricing.
2. After you've placed your order, the approval process includes a revision of your job before send it to production.
3. After receiving your final approval, we will send your job to production. When your job is ready we have available Pickup, shipp across the USA, and delivery to your FOB point\* (Add before you place your order)