



ATHMIC BIOTECH

SOLUTIONS PVT LTD

www.athmicbiotech.com



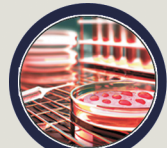
MOLECULAR BIOLOGY



BIOCHEMISTRY



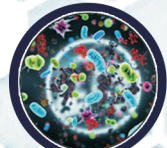
PLANT TISSUE CULTURE



ANIMAL CELL CULTURE



PHYTOCHEMISTRY



MICROBIOLOGY



TRUSTFUL COMPANION

TO REALIZE YOUR RESEARCH THOUGHTS

Contact: 0471-2401707, 8848185240

email: mail@athmicbiotech.com

CONNECT WITH US



RESEARCH AND ANALYSIS SERVICES

Following are the Research / Analysis Services offered here

Animal cell culture

- Anticancer assays
- Biocompatibility/ Cytotoxicity testing
- Fluorescent assays
- Morphological evaluation
- Metabolism studies
- Anti-diabetic studies
- Anti inflammatory evaluation
- Cosmetic in vitro sample analysis
- Anti-aging studies
- Antioxidant assays
- Oxidative stress markers
- DNA damage detection
- Cell membrane transporters
- Gene expression studies

Microbiology

- Microbial Identification
- Microbial Analysis
- Shelf Life Determination
- Active Microbial Air Monitoring
- Bioburden Testing
- Water Potability Testing
- Anti Biofilm studies
- Microbiological Risk assessment

Molecular Biology

- Nucleic Acid Isolation (DNA, RNA, Metagenomic DNA..)
- Sanger Sequencing
- Next-Generation Sequencing (Whole Genome, Transcriptome, Metagenome ..)
- Gene expression studies (RT-PCR, q-PCR, q-RT-PCR)
- Genotyping studies
- Plant viral indexing
- Taxonomic Identification & Characterization
- *Insilico* Primer Designing
- Oligonucleotide Synthesis
- qPCR Analysis (*Insilico* Designing & Analysis, Probes & Primer synthesis)
- Soil, Plant & Aquaculture Diagnostics



ATHMIC BIOTECH
SOLUTIONS PVT LTD



Phytochemistry

- Soxhlet & cold extraction
- Qualitative & Quantitative Phytochemical analysis
- Pigment Analysis
- Estimation of Metals & Minerals

Nutritional Analysis

- Carbohydrates, Total soluble sugars, Reducing sugar, Starch, Amylose, Protein, Amino acids, Gluten, Fat, Crude fibre, Calorific value, Oxalate, Oleoresin, Phytic acid, Moisture content, Acidity, Vitamic C (Ascorbic acid), Lycopene, Acid value, Peroxide value, Iodine value, Organic acids, Minerals – Ca, Fe, Na, K, P, NO₃

Pharmacological Studies

- Anticancer Assays
- Antioxidant Assays
- Antidiabetic Assays
- Antimicrobial Studies
- Anthelmintic Studies

Proteomics & Enzymes

- Protein separation (SDS- PAGE)
- Western Blotting
- General Enzyme assays (Amylase, Protease, Pectinase, Cellulase, Chitinase..)
- Enzyme kinetics
- Enzyme immobilisation


Plant Tissue Culture

- Micropropagation
- Cell suspension culture
- Hairy root culture
- Callus Initiation
- Somatic embryogenesis
- Protoplast culture

AVAILABLE FACILITIES

- ChemiDoc™ MP Imaging system
- Invitrogen Mini Blot Module (Western Blot system)
- Thermo Fisher Scientific PAGE Analysis System
- CFX Connect Real-Time PCR
- SimpliAmp Thermal Cycler (PCR Thermocycler)
- Gelstan Advanced GelDoc
- Multiskan SkyHigh Microplate Spectrophotometer
- Eppendorf CO₂ Incubator
- Labomed Inverted Microscope (Fluorescence Microscopy)
- Thermo Fisher Scientific Double Beam UV Spectrophotometer
- Remi Temperature Controlled Benchtop Centrifuge
- Biological safety cabinets Class II
- Liquid Nitrogen Cell Storage System
- Soxhlet Extractor
- Other Basic Laboratory Equipments (Animal Cell Culture, Biochemistry, Microbiology, Molecular Biology, Plant Tissue culture)



- 
- ➔ On Demand Technology Development
 - ➔ Analysis & Testing
 - ➔ Internship Opportunities
 - ➔ Hands on Training programs
 - ➔ Research Guidance
 - ➔ Scientific Content Writing

Scientific methods can unlock any mystery with unwavering commitment and proper guidance. We've got you covered.

Athmic Biotech Solutions Pvt. Ltd.
Kalliyoor, Trivandrum - 695042 Kerala
Ph: 0471-2401707, +91 9020247093
email: mail@athmicbiotech.com
web: www.athmicbiotech.com