

Installation Guidelines – Dry Lay Application

Getting Started

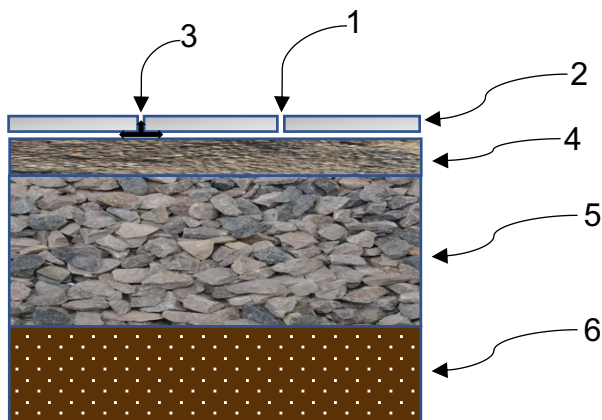
Stargres Porcelain Pavers prides itself on Safety & Quality. Please ensure to be equipped with the appropriate PPE (Personal Protective Equipment) prior to beginning the installation.

Please note:

- Installations should always be done on undisturbed native subsoil. Drainage and frost protection must also be considered when designing the space.
- The porcelain surface and the base should always slope away from buildings and/or structures to prevent potential water damage.
- Local building codes should always be reviewed prior to design and installation.
- A rubber mallet can be used to adjust / compact the paver. Use of heavy machinery/compactors can damage or break the paver.
- The cross section of the installation in this document is a guideline. A qualified professional should always determine actual design specifications.
- A diamond blade designed for porcelain should be used to cut the paver. Always wet-cut porcelain pavers for best results, this will also prevent harmful dust from getting airborne.

Installations:

A successful installation requires a proper base. The below cross section is the recommended base construction for Stargres Porcelain Pavers.



| Layer | Material Specifications |
|-------|---|
| 1 | Polymeric Jointing Sand |
| 2 | Stargres Porcelain Paver 2cm |
| 3 | 3mm Spacer |
| 4 | Minimum 2" Thick of 1/4" Limestone Screening – <i>Properly Compacted & Leveled/Sloped</i> or Dry Pack Mix of Screening, Cement, & Water <i>Leveled/Sloped</i> |
| 5 | Minimum 8" Thick of 3/4" Clear Gravel – <i>Properly Compacted Leveled/Sloped</i> |
| 6 | Undisturbed Native Soil |

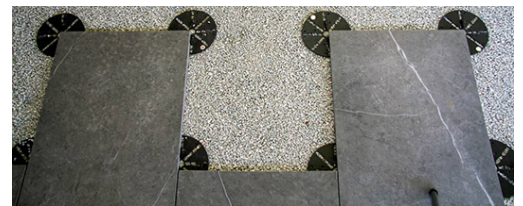
Once the area has been dug down to undisturbed native soil, followed by filling the space with **Minimum 8" Thick** of $\frac{3}{4}$ " Clear Gravel, this material is then compacted well to provide a strong base.



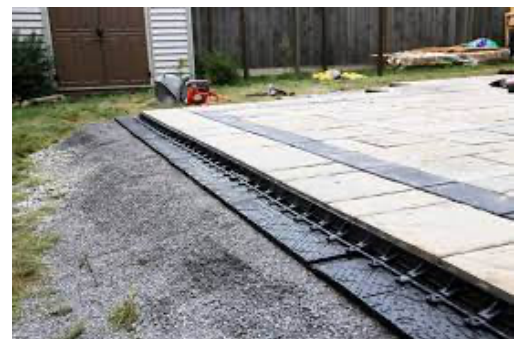
Next the **Minimum 2" Thick** of $\frac{1}{4}$ " Limestone Screening – *Properly Compacted & Leveled/Sloped* or Dry Pack Mix of Screening, Cement, & Water *Leveled/Sloped*. Keeping in mind to slope away from the building foundation and structures from the highest point to the lowest point. This will allow proper drainage and will prevent standing water.



To Install the porcelain pavers carefully lay them into place onto the 5mm black plastic spacer pads to ensure corners and edges align with each other. Lay them into place and gently tamp them with a rubber mallet.



To Finish edging, 2 cm gator paving edger is recommended installed every second hole using 6'-12' nailing.



When all the stones are in place and levelled / sloped properly, the joints can be swept full of polymeric sand. Kindly follow the instructions of the polymeric sand manufacturer, keeping in mind to keep the sand within the joints and not on the surface of the porcelain paver. Polymers in the sand can leave behind residue on the surface of the porcelain paver which would require extensive cleaning afterward.

