

Ashland Paper Mills

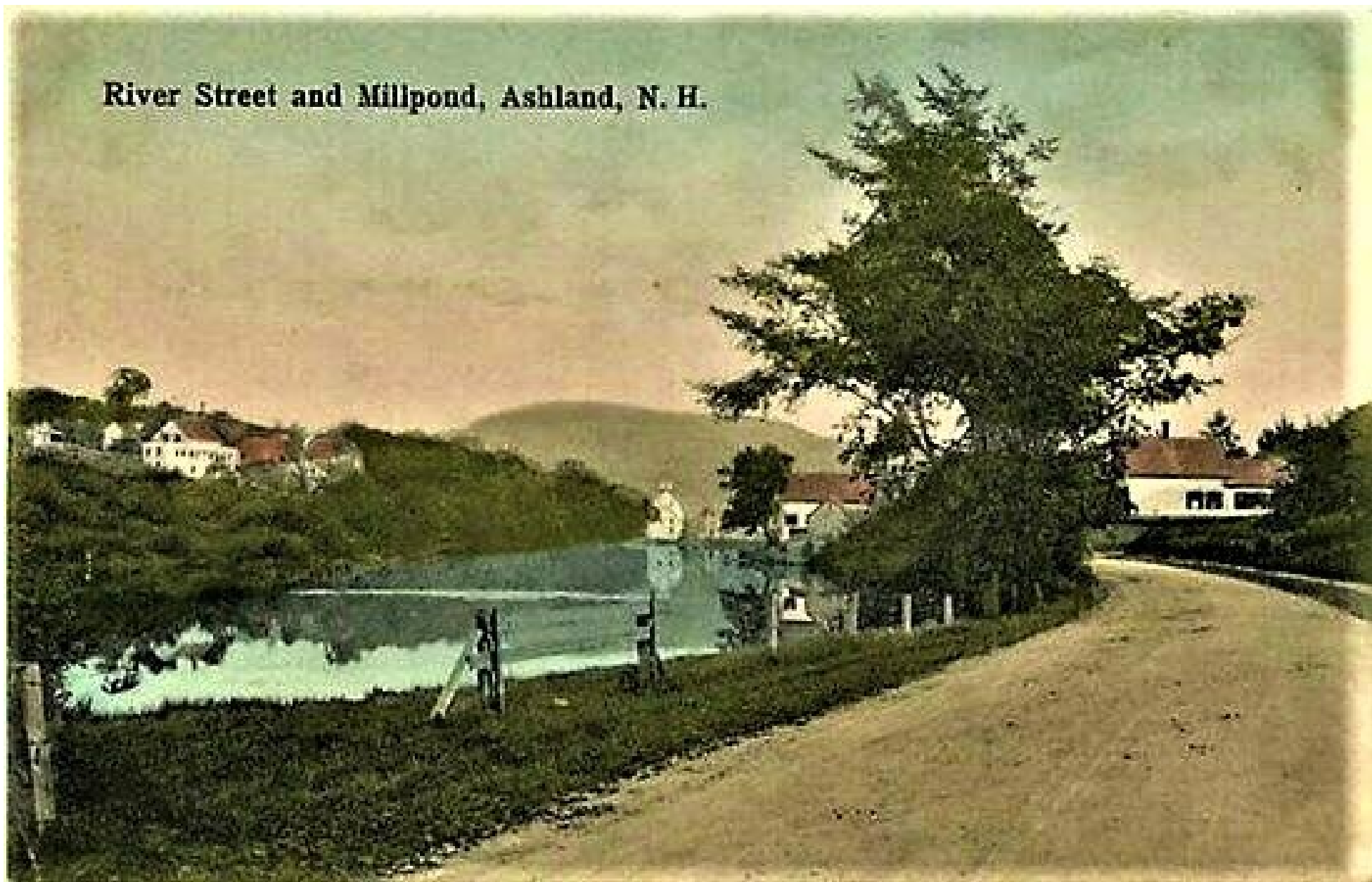
The railroads created a national economy in which goods could be shipped cheaply almost anywhere near a rail line.

This was the beginning of an international economy. In 1880, just 11 years after the first transcontinental railroad was completed in 1869, the Plymouth newspaper reported that Wilder & Co., the Ashland Paper Mills, was shipping paper to China via San Francisco.



No 3 CONTINENTAL PAPER MILL ASHLAND N.H.

River Street and Millpond, Ashland, N. H.

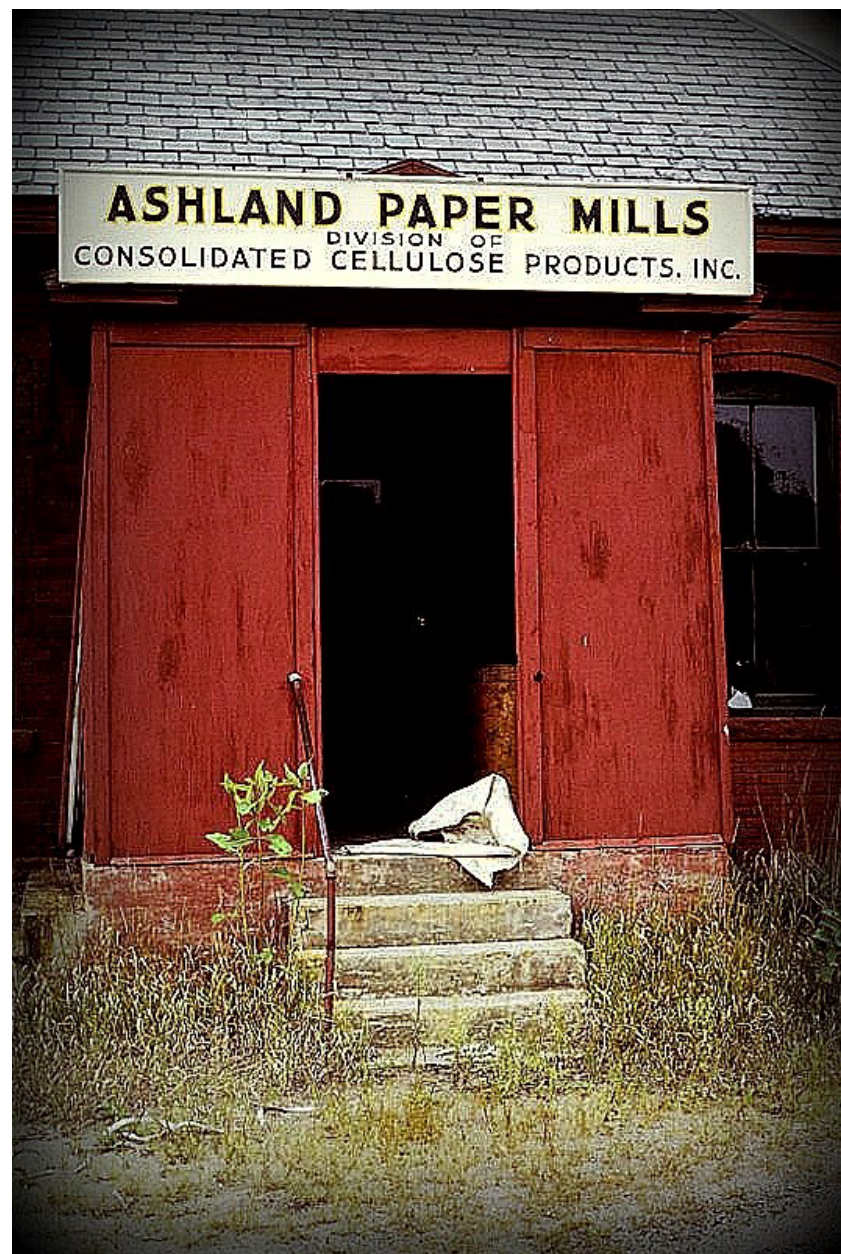






Ashland Fire
Department in the
1980s responded to
multiple fires at the
site of the abandoned
paper mill, which last
operated in 1971.











Continental Paper Mills, Ashland, N. H.







