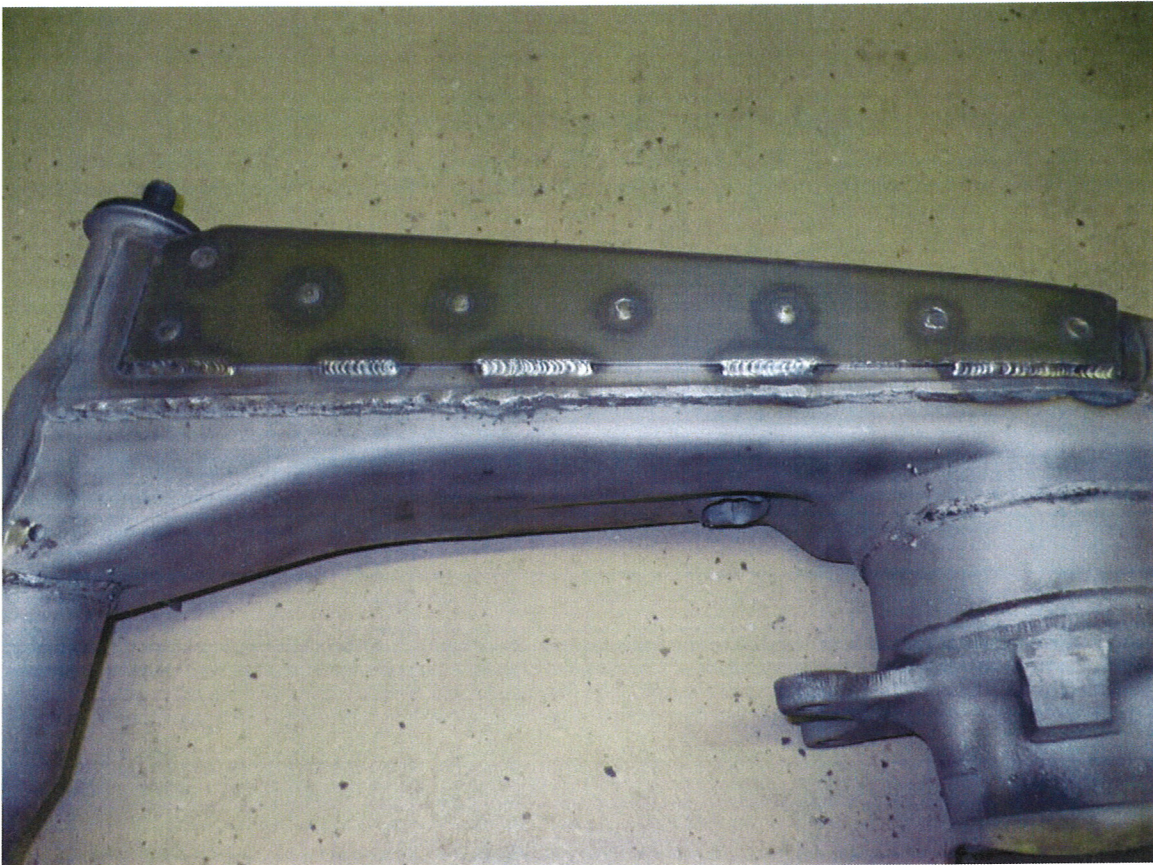


Porsche 914 Rear Trailing Boxed Arm Stiffener

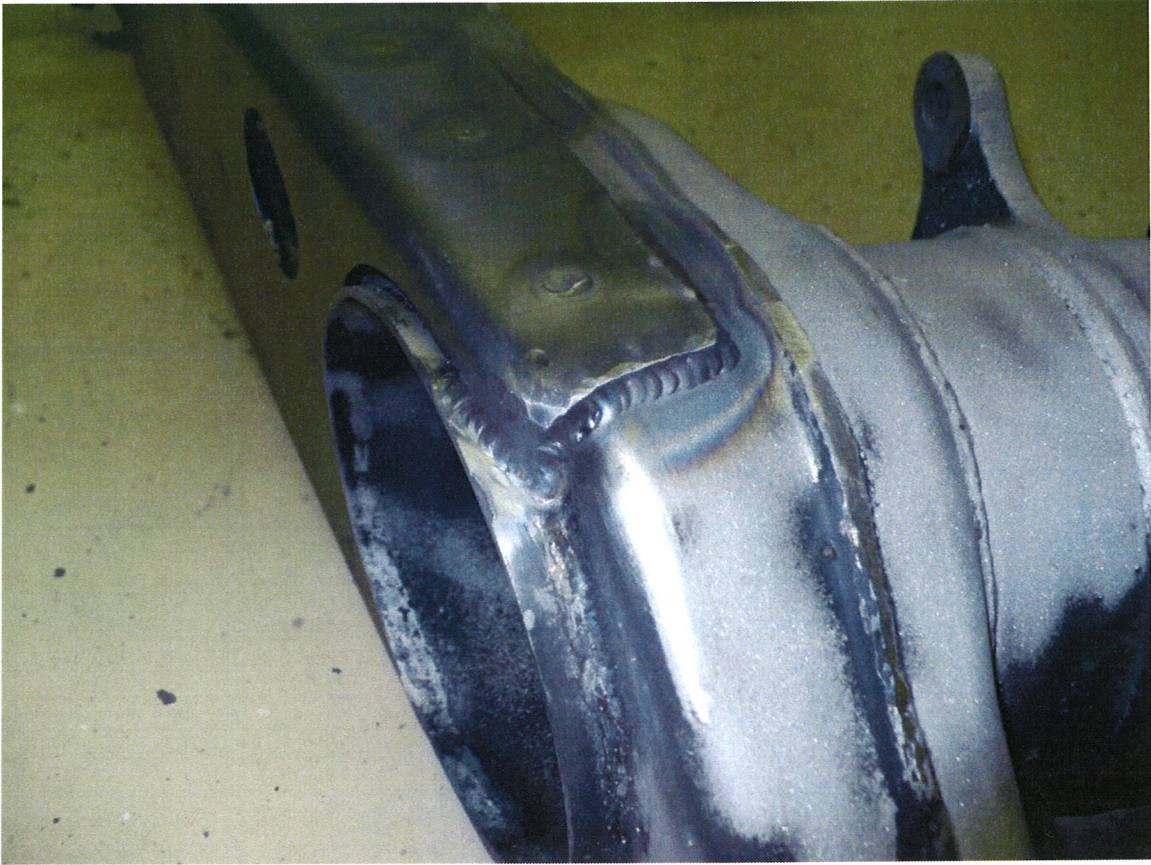
Installation Instructions

Do not circumvent any safety practices while doing this installation. Use safety glasses, face shields and welding gloves to protect yourself when drilling, grinding or welding.

1. Areas to be welded must be cleaned of all undercoating, dirt and grease.
2. Before attaching the panels, check the trailing arms for cracks, especially on the top and bottom, and all production welds. Re-weld any cracks or defective spots that you find.
3. The panels come preformed but as welding proceeds, additional forming may be required.
4. To make your work easier, first drill two holes in the trailing arm for each panel, and attach the panels with sheet metal screws. This will hold the panels while they are being welded.
5. Weld thru each hole in the panel and also weld along the perimeter with inch long welds with about an inch in between. See the attached pictures for an example.







Thank You!
Maddogs Motor Sports
Grand Rapids, Michigan

www.maddogsmotorsports.com

