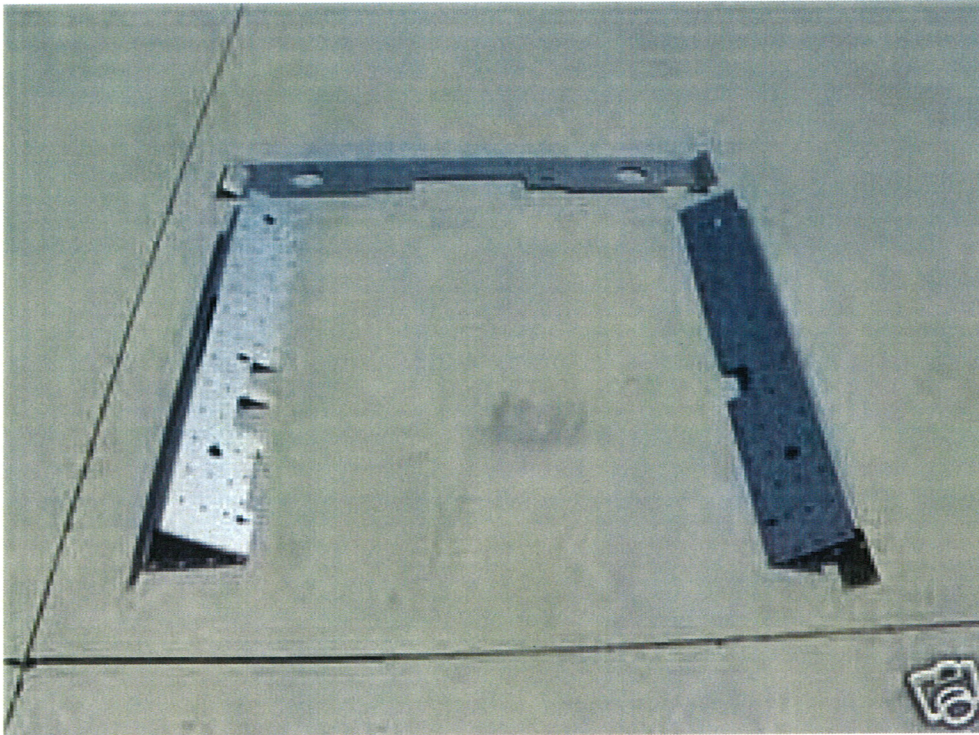


## Inner Longitude Stiffening Kit Instructions

**Do not bypass any safety practices while doing this installation. Use a jack and jack stands, safety glasses, face shields and welding gloves to protect you when drilling, grinding or welding. Be sure you disconnect the car's battery before starting to weld.**

The 914 Inner Longitude kit is composed of three 16-gauge chassis strengthening panels. TIG or heli-arc welding is the recommended attaching procedure, as this puts less heat into the chassis. Stitch weld along all panel edges and weld each hole. This kit will significantly stiffen the 914 chassis by tying the two longitude panels and the firewall together to "BOX" the frame. If you are upgrading your 914 to a six cylinder, doing autocross, or if you simply want to stiffen the whole chassis up this kit is for you. This kit has proven to significantly stiffen the 914 chassis against cracking and breaking, as well as aiding in the distribution of heavy suspension loading during hard cornering.



1. Areas to be welded must be cleaned of all undercoating, dirt and grease.
2. Before attaching the panels, check the chassis for cracks, especially on the top and forward edges of the production mounting plate, and all production welds where two or more panels come together. Reweld any cracks or defective spots that you have found.
3. Pre-form the panels as much as possible. As welding proceeds, additional forming may be required.

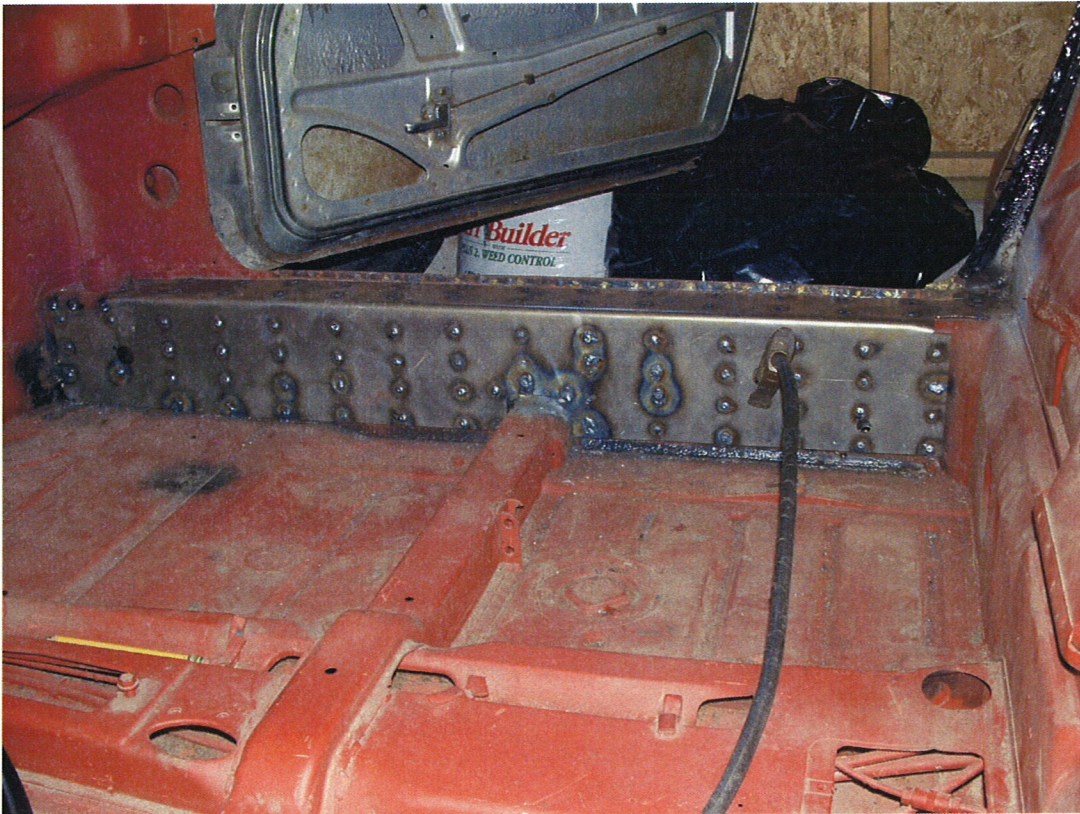


4. To make your work easier, first drill two holes in the chassis for each panel, and attach the panels with sheet metal screws to check the fit up. Once you are satisfied with the placement, and to ensure that the stiffening panel is held tight to the body, you will want to drive a #10 self tapping sheet metal screw in each hole and use clamps where ever possible. I know it is a lot of work but the reason for driving a screw in each hole is to hold the panel in place while you weld and when you remove the screw it leaves a nice little hole to weld the two panels together. Now start at one end of the panel and remove a couple screws at a time and fill the hole with weld, after a couple of welds move to another panel and repeat, this will help spread the heat out and not stress the chassis.

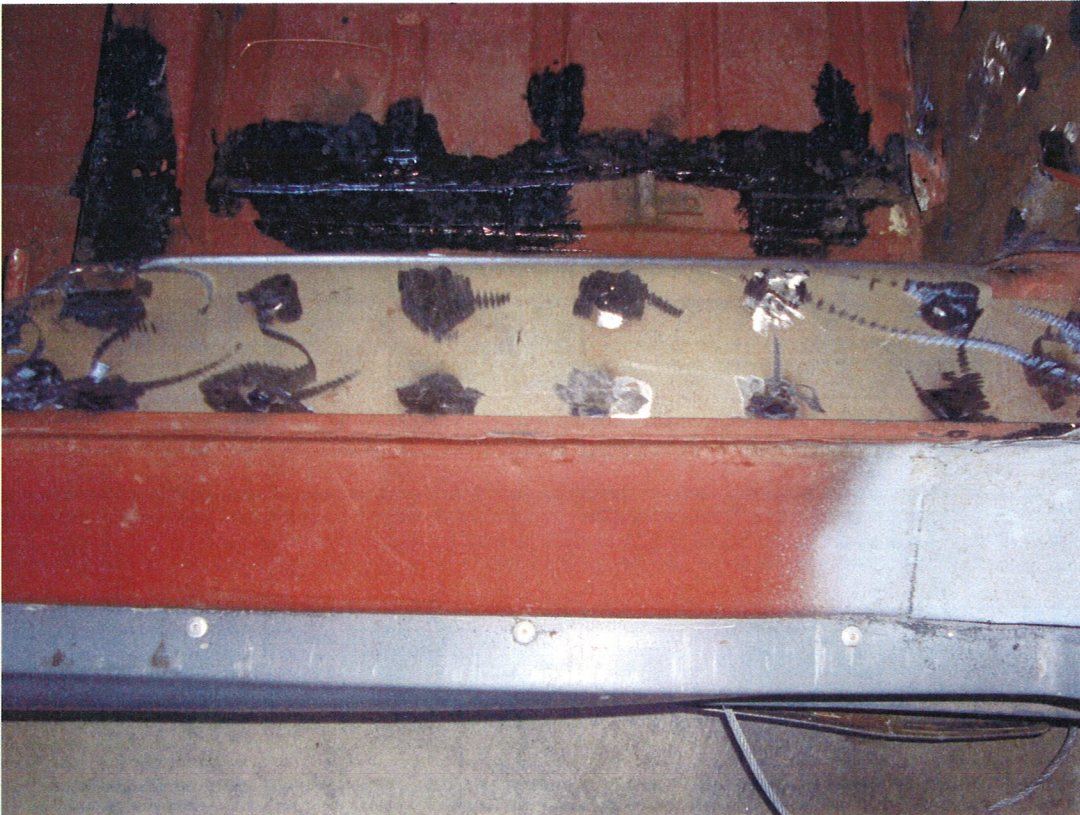








5. Once you are done welding and depending on how good of a welder you are, you will have to grind all those welds flat!



6. Now give the panels a nice coat of primer and/or paint and when you put your carpet and padding back in you won't even know that it's there.





**Good Luck!**

**Thank You!**  
**Maddogs Motor Sports**

Grand Rapids, Michigan  
[www.maddogsmotorsports.com](http://www.maddogsmotorsports.com)