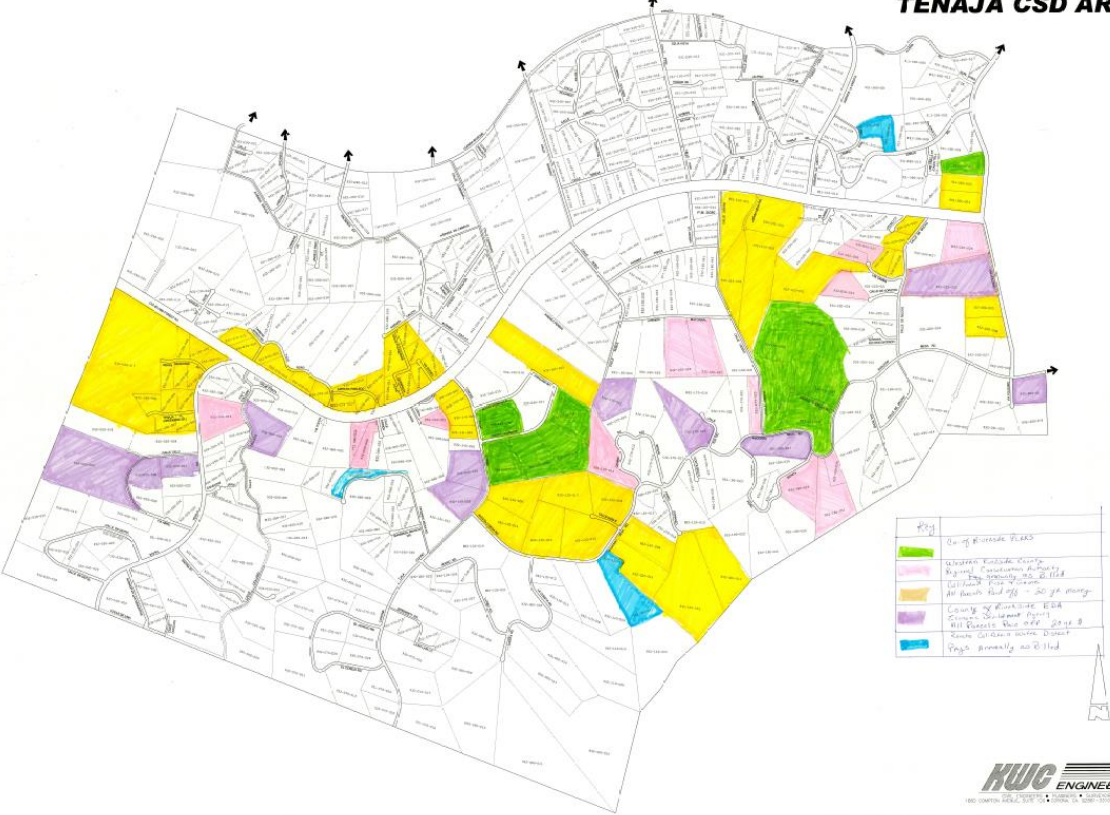


**SANTA ROSA PLATEAU
TENAJA CSD AREA**



Color	Description
Green	City of Riverside Parks
Yellow	Western Riverside County Regional Sanitation Authority (RSWA) - Sanitary No. 21128 - 22128 - 23128 - 24128 - 25128 - 26128 - 27128 - 28128 - 29128 - 30128 - 31128 - 32128 - 33128 - 34128 - 35128 - 36128 - 37128 - 38128 - 39128 - 40128 - 41128 - 42128 - 43128 - 44128 - 45128 - 46128 - 47128 - 48128 - 49128 - 50128 - 51128 - 52128 - 53128 - 54128 - 55128 - 56128 - 57128 - 58128 - 59128 - 60128 - 61128 - 62128 - 63128 - 64128 - 65128 - 66128 - 67128 - 68128 - 69128 - 70128 - 71128 - 72128 - 73128 - 74128 - 75128 - 76128 - 77128 - 78128 - 79128 - 80128 - 81128 - 82128 - 83128 - 84128 - 85128 - 86128 - 87128 - 88128 - 89128 - 90128 - 91128 - 92128 - 93128 - 94128 - 95128 - 96128 - 97128 - 98128 - 99128 - 100128
Purple	County of Riverside EDA (San Juan Capistrano) - All Parcels that are part of San Juan Capistrano EDA
Blue	Parcels currently not listed



1800 CENTER ROAD, SUITE 100, COSTA MESA, CA 92626 • TEL: 714.440.1111 • FAX: 714.440.1112