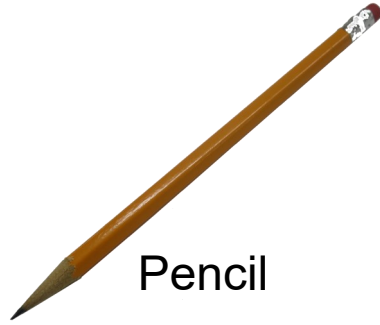


How to Finish Crosswalks

Suggested Materials



Stampinup
Chalk Pen

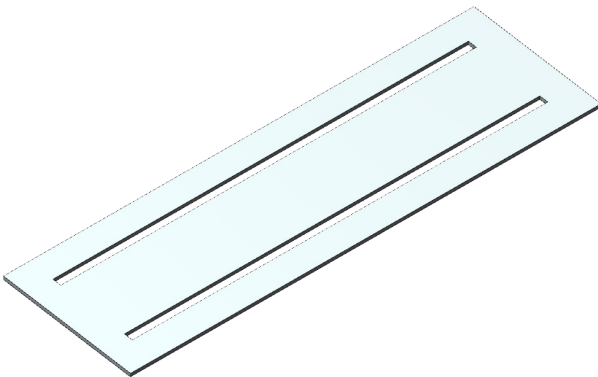


Pencil

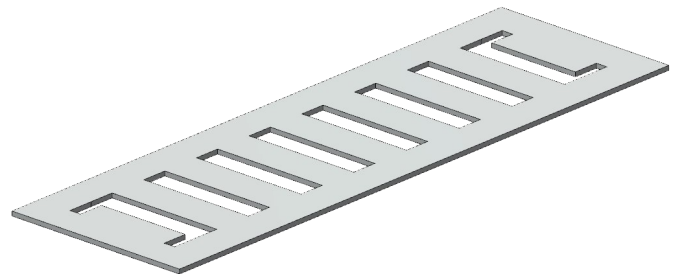


Painter's Tape

Crosswalk Parts



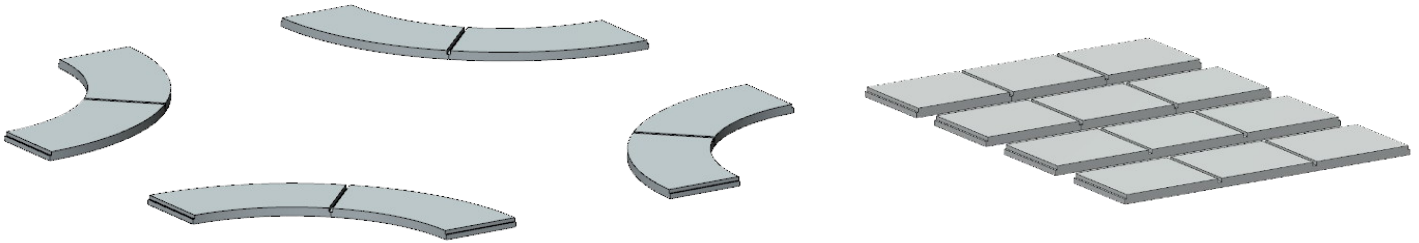
Standard Crosswalk Template
Part # TMP-007



School Crosswalk
Overlay Template
Part # TMP-008

How to Finish Crosswalks

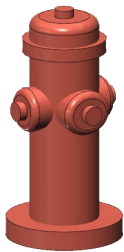
Other Available Crosswalk Accessories Available at Bobsminiatures.com



Intersection and various
Lengths of Sidewalks



Pavement Stop Template

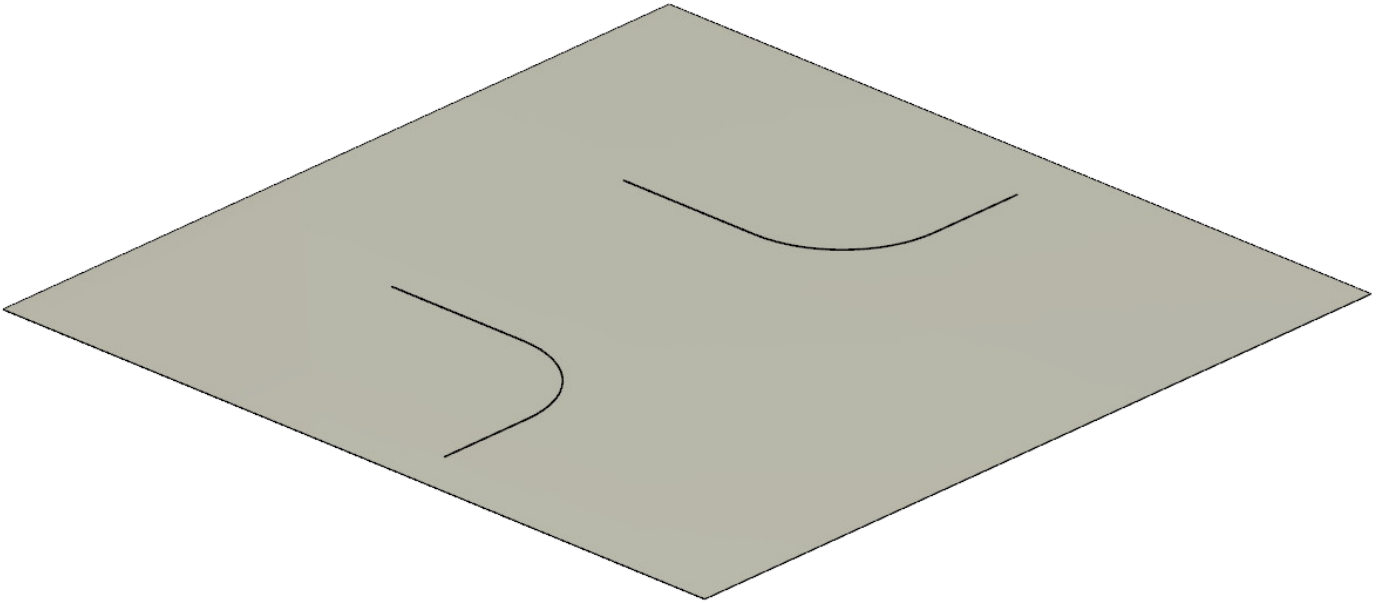


Fire Hydrant



Stop Signs

How to Finish Crosswalks



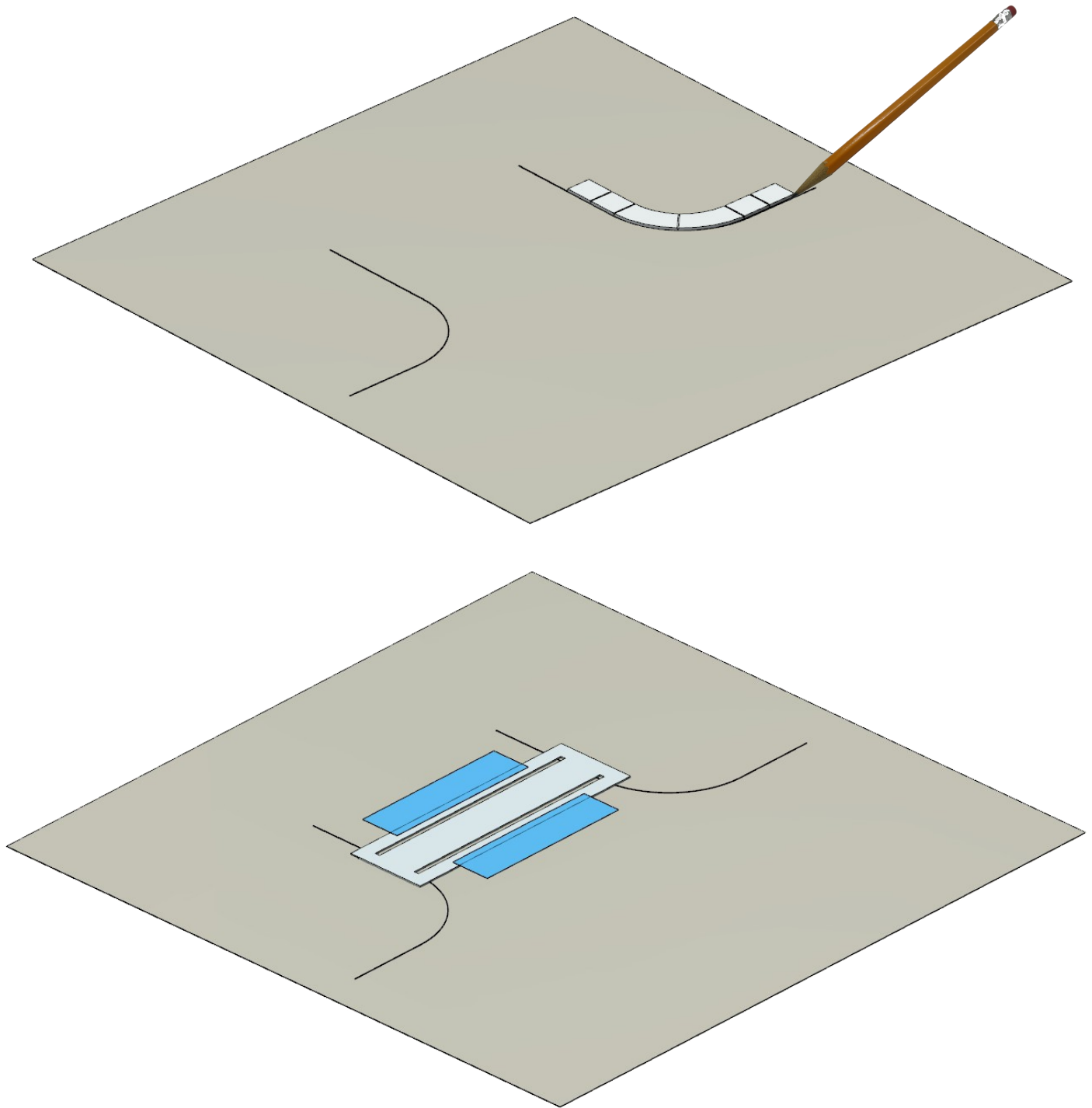
Most traffic lanes are approximately 12' wide and adjacent shoulders are usually about 8' wide. So, I made my crosswalk templates a tad longer than 40 HO scale feet to accommodate a 40' roadway. The roadway can be any width as the templates can be moved and realigned back and forth.

Using a pencil, draw 2-parallel lines on your layout at the location of your crosswalk. I made my lines 5.55" (approx. 40 HO scale feet) apart.

If you are adding a crosswalk to an intersection, the standard intersection curve is approx. 20' in radius. Using a compass, make an arc that is tangent to the intersection prolongations approx. 2.75" in radius.

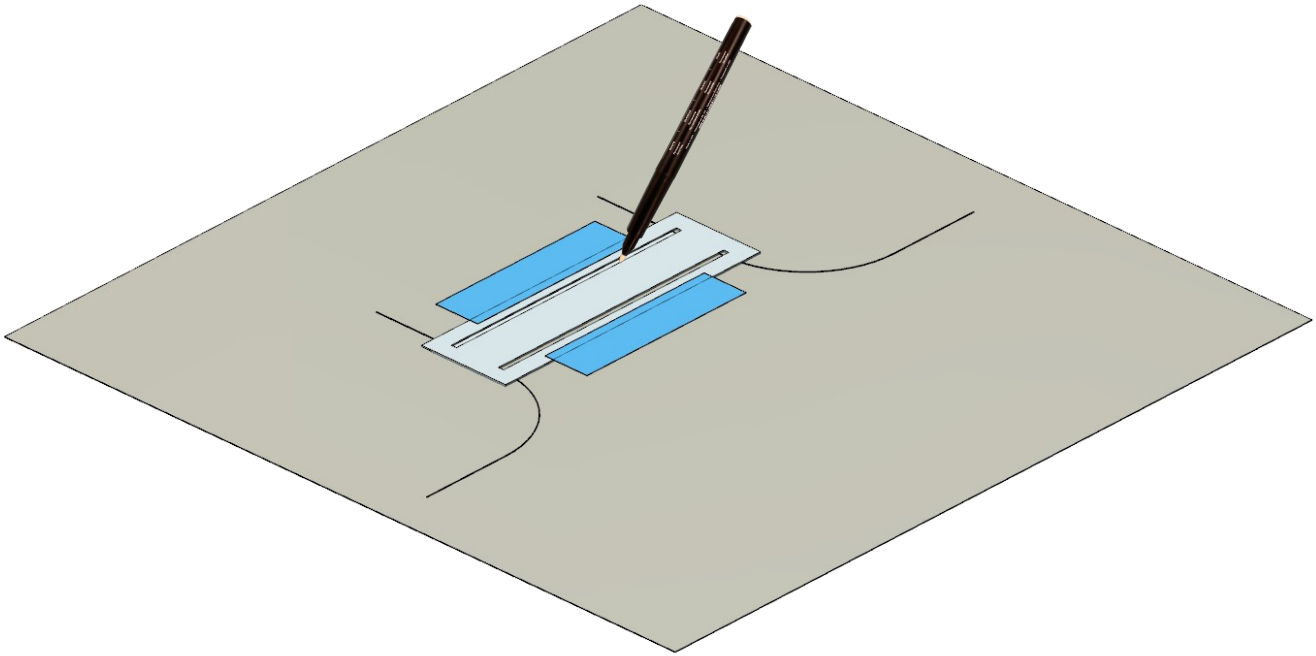
I suggest using my intersection sidewalk as a curve template instead of a compass. See next page.

How to Finish Crosswalks



Align the standard crosswalk template across the roadway at the desired location and use 2-strips of painters tape to hold it in place.

How to Finish Crosswalks



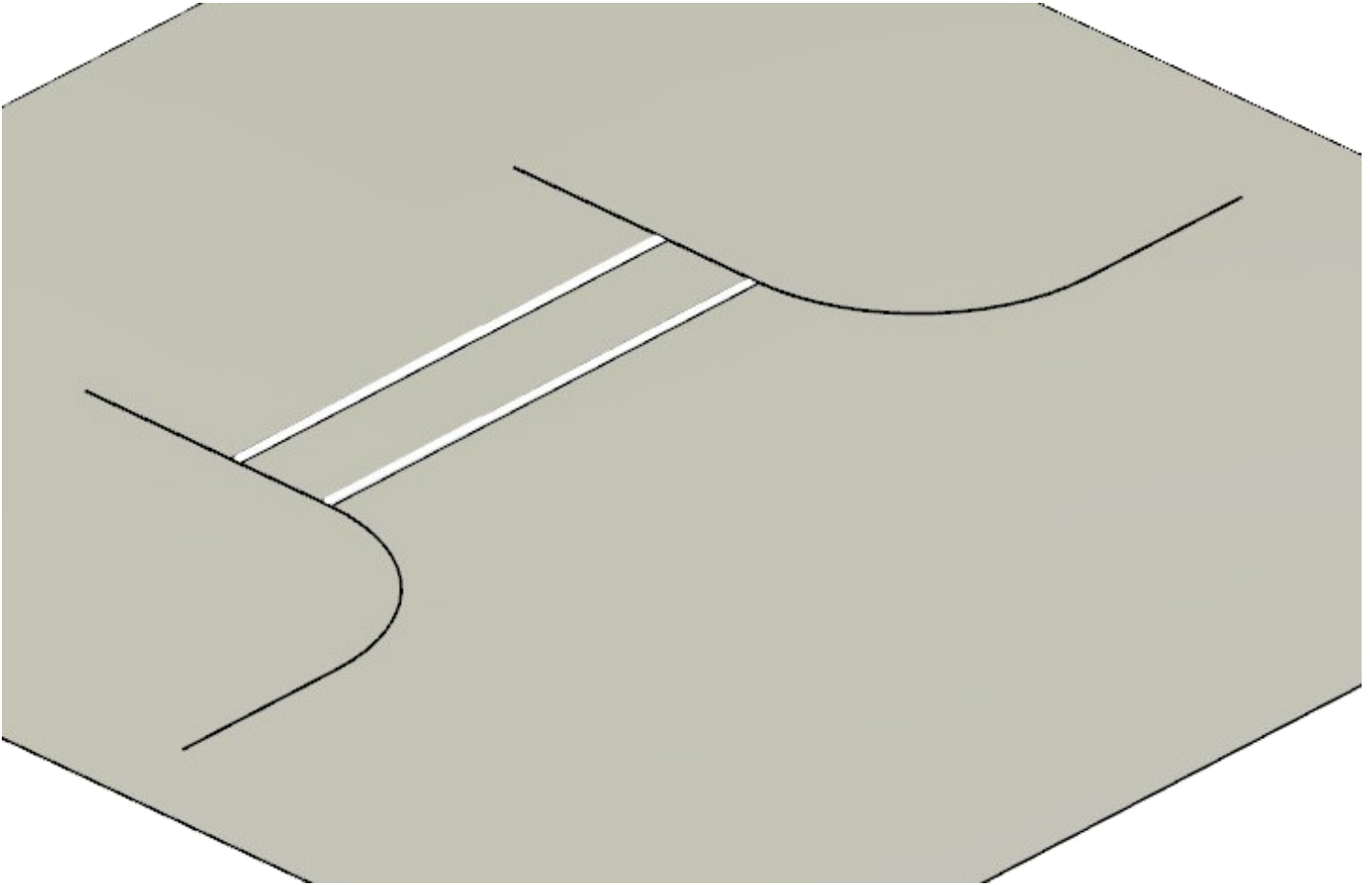
Using a White marking pen, trace the inside of each template groove. I use a white chalk pen from Stampin' Up at:

www.stampinup.com/ecweb/default.aspx

The chalk pen leaves a durable, permanent line. Apply several coats and let dry a couple of minutes between coats.

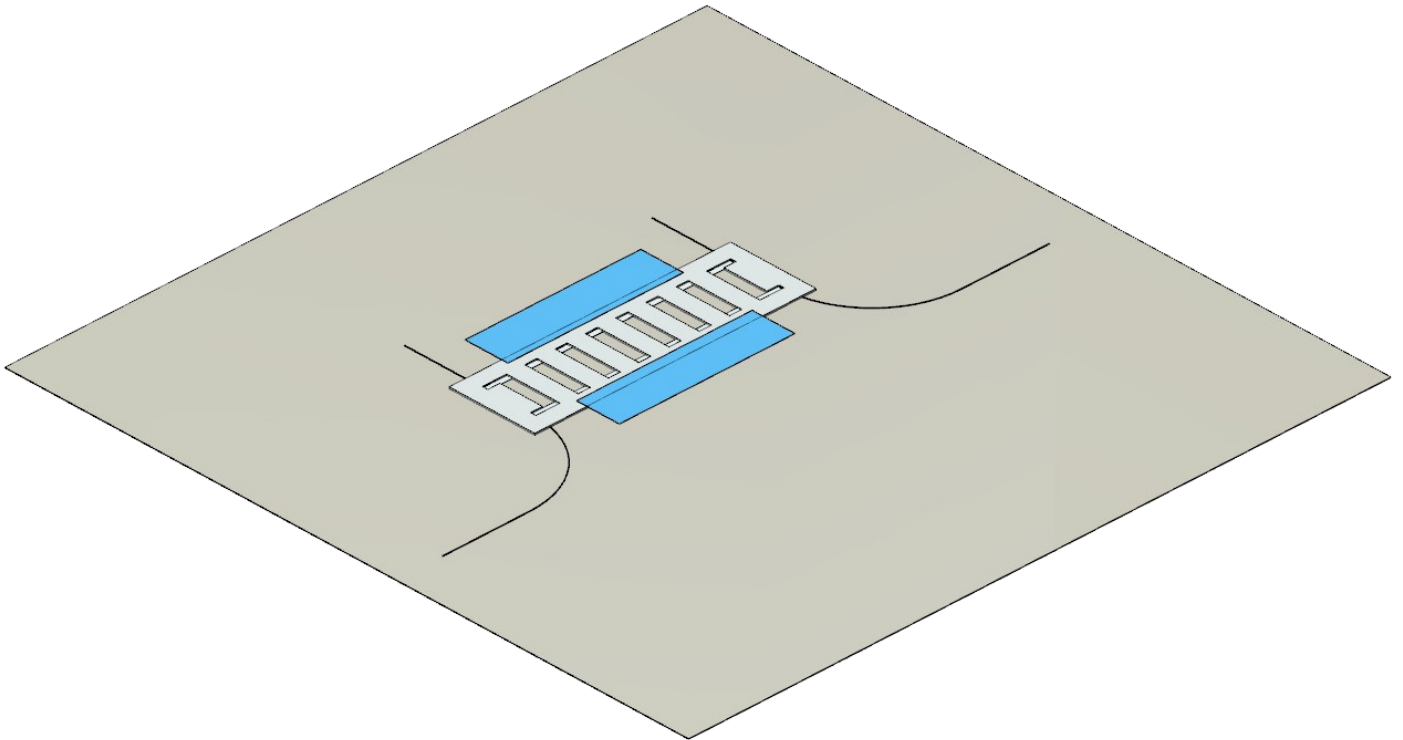
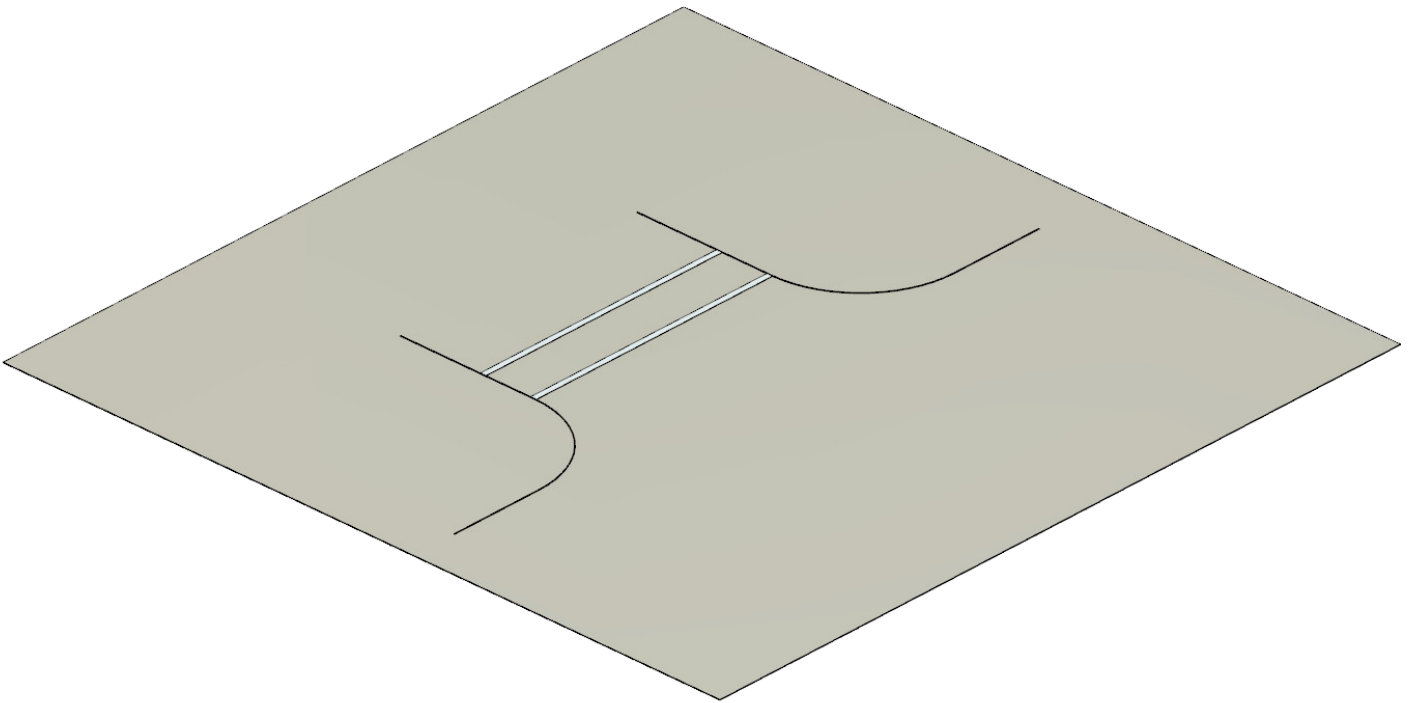
You can also spray paint the lines. It gets a little messy as you have to mask the surrounding area for overspray. Add small strips of blue tape to the bottom of the template to keep the paint from bleeding under the template. Be sure to use several light coats.

How to Finish Crosswalks



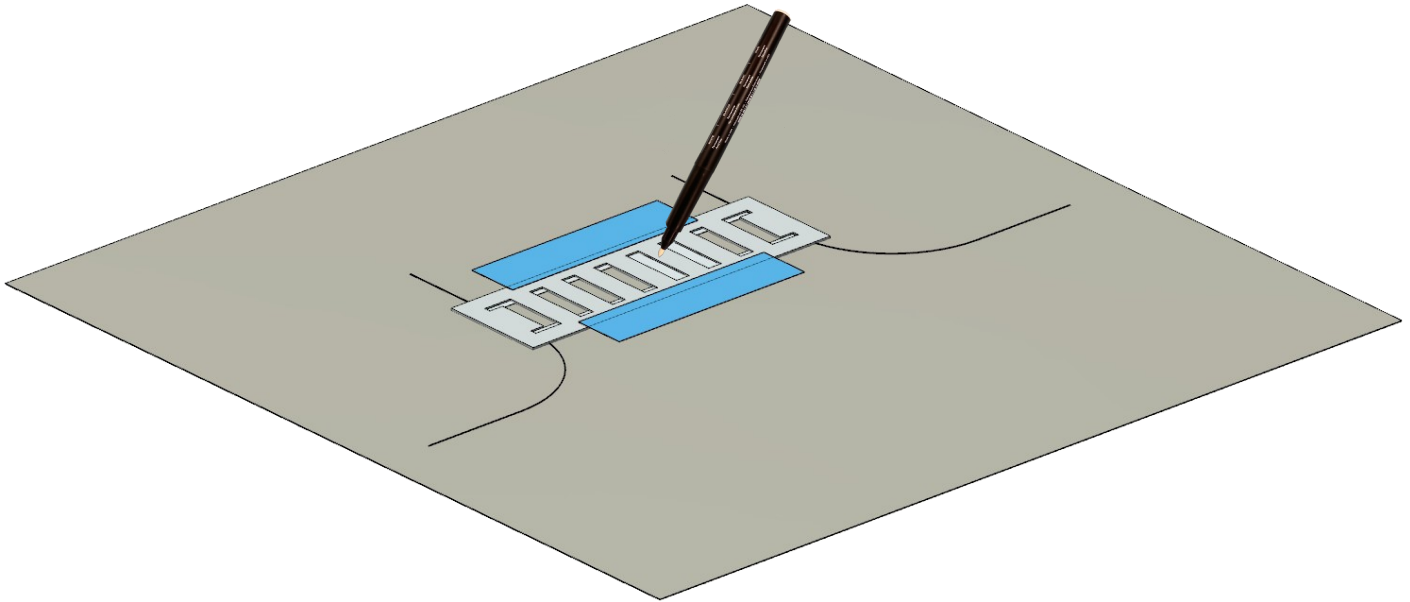
Remove the tape and the template . . .there is your crosswalk.

How to Finish Crosswalks



To make a school crosswalk, first create a standard crosswalk using the above procedures and let it dry well. Carefully align the school crosswalk overlay template over the standard crosswalk and secure it into position with painter's tape.

How to Finish Crosswalks



Use a White marking pen and trace the inside of each template groove. I use a white chalk pen from Stampin' Up.

The chalk pen leaves a durable, permanent line. Apply several coats and let dry a couple of minutes between coats.

You can also spray paint the lines. It gets a little messy as you have to mask the surrounding area for overspray. Add small strips of blue tape to the bottom of the template to keep the paint from bleeding under the template. Be sure to use several light coats. If you paint the school crosswalk, be sure the standard crosswalk is also painted.

How to Finish Crosswalks

