



Here are 55 ways we can assist you at Pharmers PTY Ltd

A Responsible Pharmacist Application Locums:

- 3 or 6 months IRP locum (pre-license)
- Recording / monthly locum (post-license)

C Pharmaceutical Licenses:

- GPP Premise scouting (within SA)
- Health shop establishment
- New pharmacy feasibility study (mini / full)
- Community pharmacy x 5 packages (SAPC + NDoH)
- Compounding only restriction (SAPC + NDoH)
- Wholesale pharmacy (SAPC + NDoH + SAHPRA)
- Manufacturing pharmacy (SAPC + NDoH + SAHPRA)
- Import / Export manufacturer only
- Cannabis licenses (cultivate, manufacture, export)
- Business cash flow forecast (loan application)
- Pharmacy rescue / revamp / innovation audit
- Recording / Medical aid accounts / SOPs / Policies
- Licensed establishment sale and purchasing
- SAPC pharmacy grading inspection pack

E Professional Council Registrations:

- Pharmacists (annual renewal / foreign)
- Nurses+ (annual renewal / foreign)
- General practitioners (annual renewal / foreign)
- Intern exam prep
- Pharmacist CPDs (8 pack)

G Quality System Documents:

- Compilation of quality policy,
- Compilation of quality manual
- Compilation of Site Master File (SMF)
- Compilation of Standard Operating Procedures (SOPs)
- Facility audit (GMP, GPP, GWP, GCP, GRP)
- Stability protocols
- Validation protocols

B Medicine Registrations + Lifecycle Management:

- eCTD Baseline registrations (MRF/MBR - Seq 0000)
- eCTD NCEs, Biologics medicine registrations
- eCTD Generic medicine registrations
- 3D-listing complementary medicines registration
- Complementary medicine label reviews
- Vet medicine registration (DAFF Act 101 & Act 36)
- Pharmacovigilance updates + reports (ADRs, ICSRs, AEFIs)
- Medical writing compilations (m1.3 PI/PIL/Label/translations)
- Section 21 applications
- Clinical trial protocols
- NAPPI CODE applications
- Detained CatD release

D Medical Device Establishment Licenses:

- Distribution license only (SAHPRA)
- Wholesale license only (SAHPRA)
- Manufacturing license only (SAHPRA)
- Any Medical Device license + ISO 13485 (SAHPRA)
- ISO 13485 certification only (SAHPRA)
- Radiation device

F Business Development:

- NHI Readiness Strategy
- Pre-license and post-license compliance strategy
- Pharmaceutical organizational strategy (plan)
- Regulatory intelligence (plan / retainer)
- Regulatory marketing, marketing material and artwork design / review

H Recruitments + Retainers + Reps:

- Short placement (organizations/ professionals)
- Permanent placement (organizations/ professionals)
- 6 or 12 months consultant retainers
- Sale representatives programme

HOW CAN WE HELP



Pharmers
In-Depth Personalised Pharmacare

PHARMERS CONSULTING SERVICES

PROFESSIONAL CONSULTING INFORMATION SHEET

Hey there, welcome to Pharmers! Your compliance is our expertise and business.

In this brochure you will find:

A. Responsible Pharmacist locums	page 3
B. Medicine Registration + Lifecycle management	page 3
C. Pharmacy licenses	page 4
D. Medical device establishment licenses	Page 8
E. Professional Council registration	page 9
F. Business Development Services	page 9
G. Quality System Documentation	page 11
H. Recruitment Services, Retainers & Reps	Page 11
I. Ts & Cs with Payment Details	Page 15
J. Pre-consultation Questionnaire	Page 17
K. Service Request Form	Page 18

Client Instruction:

>>Step 1

Peruse through this brochure to the section of interest

>>Step 2

Proceed to the last page to enter applicant details and services selection code(s) on SRF. If any discount codes apply, enter them in the right column.

>>Step 3

Use the pre-consultation questionnaire if need or available services listed are not clear

>>Step 4

Return signed SRF to info@pharmers.co.za.

This brochure does not contain an exhaustive list of services; should you not have found what you need, request it in the “other” box on the Service Request Form. Please note that for licensing packages a compulsory project consultation with apply (you may book online at www.pharmers.co.za/book-appointment) or request a time and date by email. This should be scheduled immediately after your project is selected and SRF returned.

A project sheet will be sent to you upon securing your booking with specific project information such as deliverables, timelines, and requested documents to be returned. A complementary relevant and related training video is available for all project types to further assist our clients maintain compliance after we handover.

A. RESPONSIBLE PHARMACIST LOCUMS

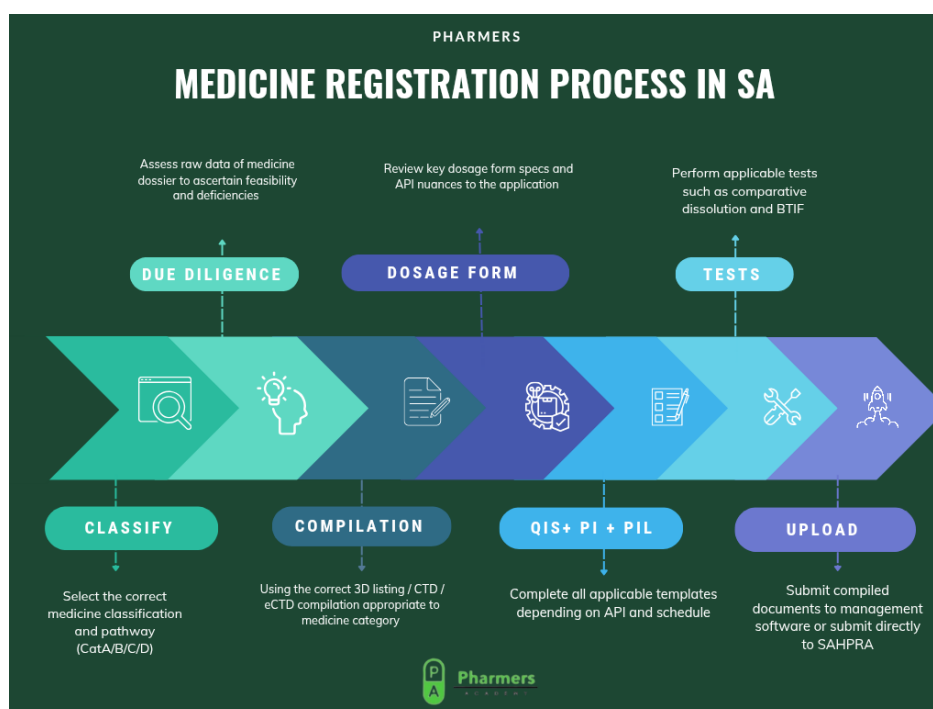
According to the Pharmacy Act, the Medicines Act, the PIC/s and GMP standards, you require a registered pharmacist to take up legal responsibility of your pharmaceutical establishment. To hire a temporary pharmacist who will be responsible for your license application or establishment recording, you can opt from the following:

Code	Description	Duration	Cost
IRP	Interim RP (pre-license)	3 or 6 months	R25k or R50k
RRP	Recording RP locum (post-license)	1 day - 1 month	R10 000

Any other short term RP request can be customised by email.

B. MEDICINE REGISTRATION + LIFECYCLE MANAGEMENT

According to the Medicines and Related Substance act, you may register medicines in South Africa to the SAHPRA under any of the four available medicine categories. A,B,C,D.



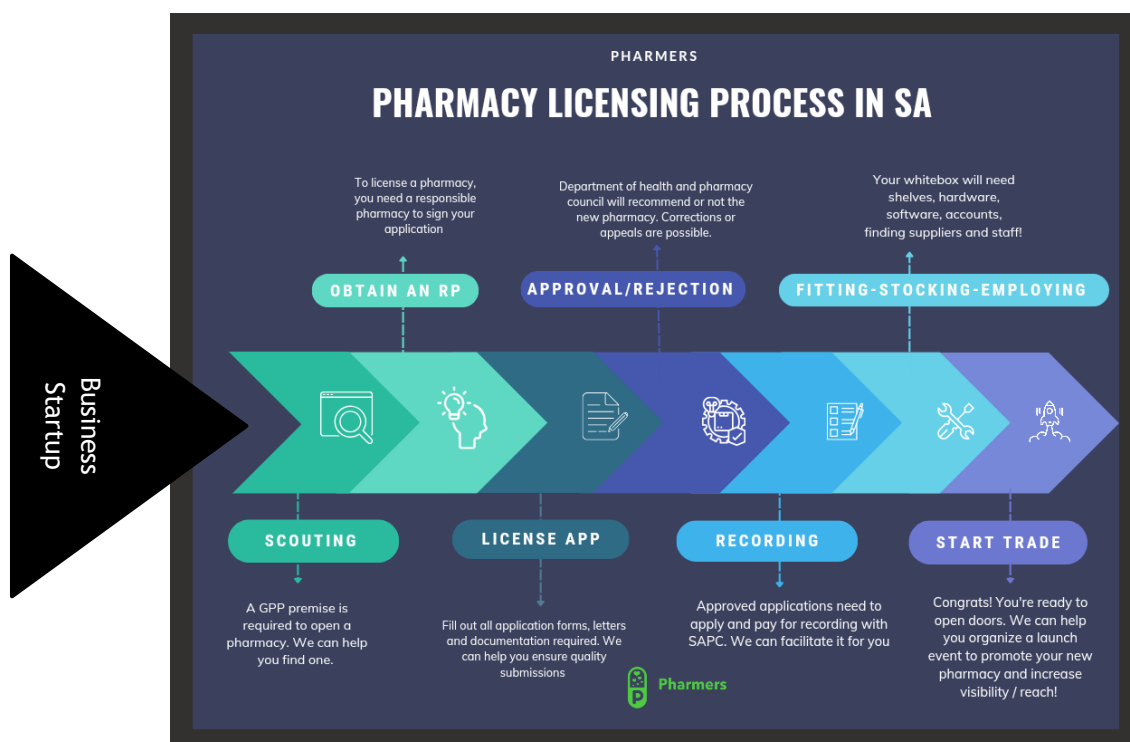
To register your medicines, use the appropriate route or let us review your API and recommend the correct route for you:

Medicine Category	Description	Duration	Cost
A, B, C	Screening, m1-5, QOS, QIS, BTIF, PI, Label & PIL	150 - 200 hours	R1000 / hour
D	3D list, PI and PIL, module 1 - 3	10 -25 hours	R1000 / hour

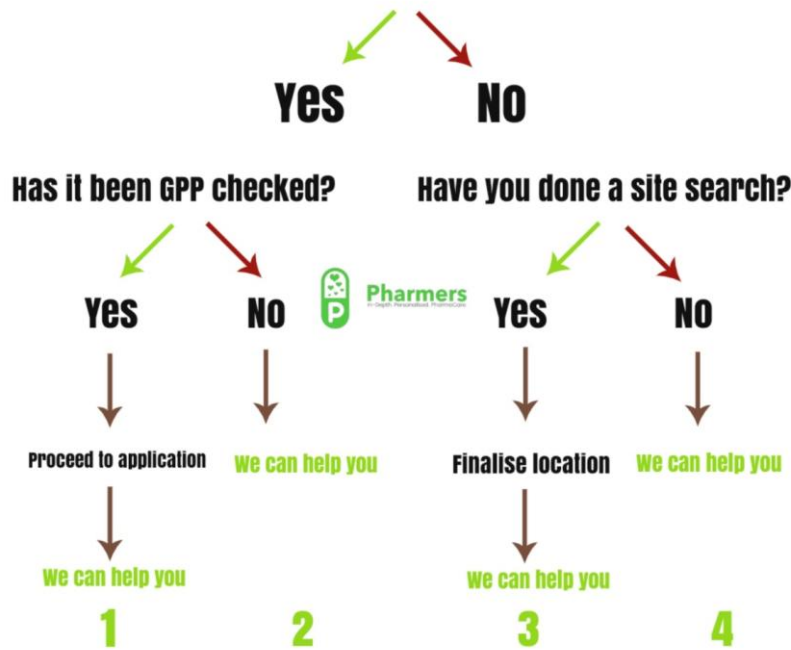
CatD Manuf	Manufacturing license for complementary meds registration	6 months	R80 000
Category review	Label / source data	1 hour	R1000 / hour
NAPPI code	Application per health product	1 day	R1000 / hour
DetCatD	Release of detained Cat D product(s) application	3 days	R6000
Sec21	Section 21 SAHPRA application	15 days	Various
NB: Compilation of part or full dossier is possible. You will need to book a project call so we can discuss the exact requirements and the right approach for you.			

C. PHARMACY LICENSES

We have several curated options of licencing services available depending on your needs. Whether you require a pharmacy licence (**community, institutional, consultant, wholesale, or manufacturing**) a medicines import/export license, or a medical device one (including IVDs) for manufacturing, distribution or wholesale, you've come to the right place. The National Department of Health as well as the South African Pharmacy Council are the two authorities who process pharmacy license applications. This takes approximately 4 months from date of submission. The steps are as outlined below:



Do you have a pharmacy premise?



Before your consultation, prepare the following:

- Any questions on your project / opportunity
- Your project or ideal geographical location
- Your preferred package option
- Rough idea of budget / outcomes / end goal
- By when you'd like to start /accomplish it etc.

Pharmacy Licence package options:

2026 PHARMERS' PHARMACY LICENSE PACKAGES

1	2	3	4	5
Lite	Comprehensive	Business	VIP	Signature
<ul style="list-style-type: none"> • All documents provided • Own RP • Submission • Follow up • License collection 	Lite package plus: <ul style="list-style-type: none"> • Floorplans/3Ds/Sit eMap • Interim Responsible Pharmacist • Official pop stats • SOPs / Policies • CSD MAAA • license hand delivery / courier 	Comprehensive package plus: <ul style="list-style-type: none"> • Premise Scouting • Business plan + Cashflow forecast • Recording of Pharmacy Including R26k fees • PNCS application + fees for practice number • BHF application + fees for 12 medical aids • Premise fitting admin assistance • Wholesaler accounts (application + onboarding assistance) • Staff recruitment up to 3 (interview + shortlisting (pharmacist, assistants, cashier/cleaner) • Pharmacy launch flyers 	Business package plus: <ul style="list-style-type: none"> • Company reg/ setup • Premise rental deposit • Pharmacy software (inventory, dispensing, clinic options) + purchase • Hardware purchase (full set up - 2 x dispensing stations, 1x till, scanners, printers, • Recruitment up to 5 + contracts and KPIs • General staff training • Sales + strategy training • Shop fitting (R100k) • Stock (R200k) • SAPC Inspection pack • Clinic / MTM strategy + training • Pharmacy launch • Social Media set up • 6 months dispensary + clinic management 	VIP package plus: <ul style="list-style-type: none"> • Software purchase + 3 months license • Hardware purchase (VIP setup + another R50k of office/clinic furniture) • General staff training • Dispensary sales + strategy training • Shop fitting (R150k) • Front shop + dispensary stock mix (R400k) • Unlimited staff recruitment • Pharmacy cameras + installation • Content + indemnity insurance application • Branding / signage • 3 months outdoor trailer advert • Dispensing coats / scrubs + name tags • Clinic strategy • MTM strategy + pharmacist training • Pharmacy marketing launch + open day • Social Media set up + 6 months marketing • Another 6 months dispensary + clinic management
R25 000	R45 000	R200 000	R750 000	R1 500 000

Contact PHARMERS at info@pharmers.co.za or call 010 222 0118

Code		Name	Description	Duration	Costs (excl VAT)
InsPSAPC		We will pack and deliver your custom: <ul style="list-style-type: none"> Binder: SOPs + Policies, Contracts, log sheets, S6 destruction, ADR reporting, clinic forms Reference Books: med dictionary, SAMF, 'cology, EMGuidance app, and electronic copies Signage: directional, restricted, waiting area, pharmacy operating hours, Objects: Schedule 6 register, Weighing scale, Counting trays x 2, Spatula, Fire extinguisher, Mortar + pestle, Measuring cylinders, Temperature logger, Fridge alarm, 2 logo name tags, 2 scrub tops; 		Approx.. 15 days delivery	R40 000
P A C K A G E S	DFUT	Done-for-you Training	New pharmacy / new staff training for optimised dispensary management and operations. GPP focused.	7 days	R5 000
	DFUlite	Done-for-you lite	Pharmacy license application with your own pharmacist and your own premise	7 days	R25 000
	DFUPL	Done-for-you license app - comprehensive	Full pre-license service from start to license, including: CIPC company registration, IRP + cover letters, floorplans, CSD application (MAAA), SOP pack, 6-part online application, etc	14 days	R40 000
	DFUB	Done-for-you business	This is the premium package for business people who are looking to license one or multiple premises. Includes scouting, recruitment, training, and more post-licensing assistance.	From 06 months	R200 000
	DFUVIP	VIP	Full package pre-and post- licensing including scouting, licensing, recruitment, staff training, 3 rd party accounts and registrations, shop fitting, stock, pre-launch marketing campaign and accompaniment for the first half operational year including social media, clinic and dispensary management.	From 06 months	R750 000
	Signature	Experience	Full VIP pack plus additional stock, additional management assistance and additional fittings/ furniture	12 months	R1.5M
A-la-carte services		Choose individual services from below.			

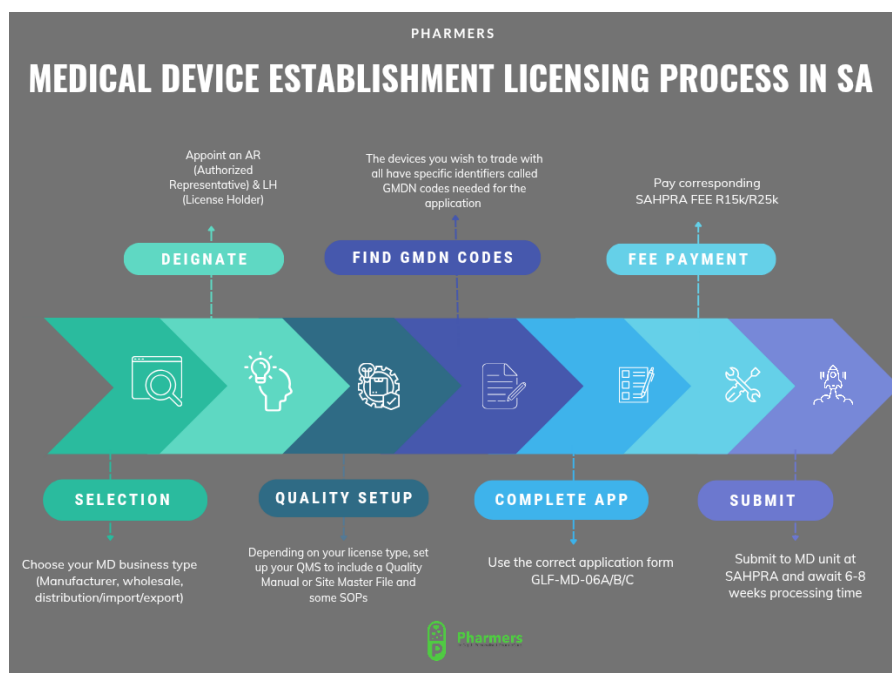
Service Code	Service	Service Description	Approx. Days	Cost
PRE-LICENSE SERVICES				
FEA	Feasibility	Project feasibility in terms of licensing. Check to see if your project will be viable before investing in it fully. Gauteng only	10 days	R8000
MFEA	Mini Feasibility	Check your project feasibility with a desktop review on key elements before starting. Nationwide	7 days	R5000
SCO	Scouting	Search for GPP premises suitable for the desired pharmacy type in 3 chosen geographical locations within SA x2 cycles as needed.	15 days	R6 500
POST-LICENSE SERVICES				
REC	Recording of Pharmacy	Paper and online application with applicable fees after the pharmacy is recommended and approved.	7 days	R3 000
VLC	License Changes (various)	Any changes to existing application (ownership, relocation, tradename). All letters, online application, hard copy & floorplans (subject to size)	14 days	From R10 000
BHF	Practice Number, medical aid bouquet, wholesaler accounts	Online review and application, of documents (CIPC, lease agreement, ID of directors, ID and & Reg of RP, proof of current registration of the pharmacy), support documents, online submission, application for the web access. Registration of your pharmacy as a designated service provider to 5 medical aids bouquets (includes preferred provider applications) and wholesaler application to top 4 accounts.	Up to 14 days	R10 000
BRR	Business Rescue & Revamp	Is your pharmacy in ICU on the verge of death? Before you sell, let us come in and revive it	2 months	R25 000
Renew	Various renewals	Professional Licenses or permit renewals for healthcare professionals	10 days	R3000
BUDG	Post license Budgets	Receive a detailed budget breakdown of what you would require as a basic guide to open a small pharmacy + clinic	1 day	R1000
BUSCAS	Cashflow forecast	36 months cashflow, start up budget (opening), ongoing budget,	10 days	R15 000
WSL	Wholesale license	SAPC wholesale application with full SAHPRA application (including SMF)	2 months	From R80 000
MSL	Manufacturing license	SAPC application with full SAHPRA application (GMP, including SMF)	3 months	From R80 000
MCL	Medicinal cannabis	To obtain a license to cultivate, distribute or manufacture medicinal cannabis	3 months	From 50 000

The time frame for applications varies. The minimum time for new, full is 3 months, according to the SAPC publishing. To minimise time wasted, ensure your submission is correct the first time you apply. GPP compliance is crucial. Your premises are the most likely area to be non-compliant, so pay extra attention to their requirement.

Remember, we are here to help should you want us to take over your application process, refer to the add-on services that follow and select all that apply. To be discussed during your consultation.

D. MEDICAL DEVICES:

Welcome to Pharmers' professional medical devices (including IVDs) licensing information sheet! We have several



curated options of licencing services available depending on your need according to the Pharmacy, and The Medicine and Related Substances Acts. Whether you require a **manufacturing** (manufacture, pack, label, service, import, export), **distribution** import, export, distribute) or **wholesale** (storage, transportation, delivery) license, you've come to the right place. 3 types exist: manufacturing, distribution and wholesaling (quality manual or SMF required). The SAHPRA fees are R25 200 for manufacturing, R15 600 for distribution and R15 600 for wholesale. The first step to understand the process and requirements.

The fourth one is an export only but requires an existing wholesale license. You've come to the right place. We provide license

application services with SAHPRA.

Medical Devices Licence Service Descriptions:

Code	Name	Description	Duration	Costs (incl VAT)
DFUMD	Comprehensive Done-for-you	A full application covering all four classes (A,B,C,D) - Comprises 6.22 pdf & excel application, company registration, AR + LH letters, SMF / quality manual, SAHPRA FEE	Up to 15 working days	R45 000
DFUPMD	Premium ISO Done for you	All of the above, plus branding, compliance site visit with recommendations, CSD registration, ISO 13485 SOPs, special LOA, ISO 13485 Implementation Support	Up to 15 days, then up to 3 months	R110 000
A-la-carte options				
Quality Manual	QUM	Required for MD applications (manufacturing and distribution)	10 days	R25 000
AMD	License amendment	Various changes (additions / removal / to existing license	10 days	R10 000

E. PROFESSIONAL COUNCIL REGISTRATIONS

If you are a healthcare professional (HCP) needing assistance with your registrations to the following councils; SAPC, SANC, HPCSA you may apply.

CODE	NAME	DESCRIPTION	DURATION	COSTS
HCPR	HCP renewals	Renew your annual council memberships and registrations	10 days	R3000
HCPC	HCP custom	Customise your request	n/A	Custom
FPR	Foreign professional registration	Register in SA from	3 months	R5000
IEx	Intern exam	Preparation notes / questions	3 days	R2000
CPD	SAPC Pharmacist CPDs	Get the 6 CPD pack template	5 days	R2000

F.

Foreign registered professionals seeking to register in South Africa may also seek assistance.

F. BUSINESS DEVELOPMENT SERVICES

We have services available depending on your needs. Whether you require a pharmacy license, a medical device license, health shop plan, startup financial risk advice, a startup budget, or CIPC company registration, you have come to the right place. Start your business with expert advice. The first step to effectively resolving your query is for us to define and understand it adequately. Kindly complete the attached Pre-Consultation questionnaire fully. This is not a compulsory step, but it ensures that you do not waste your resources (time and money) unnecessarily by embarking on a project that is not feasible or has some disqualifying element. We review your project and discuss your project deliverables and timelines. We are here to be partnering with you on this exciting new journey and wish you the very best outcome.

Entrepreneurs who wish to begin in various projects can opt for helpful services such as:



The NHI bill is signed into law. It is piloted and being rolled out for years already. If you didn't know it, the CCMD patient parcels which many pharmacies registered at "pick up points" issue out are already an implementation of the NHI. Whether you are for or against the fund, is irrelevant. You should be seizing the opportunities that present to the primary health care space adequately, earlier than later. To assist you we have three packages available for pharmacy readiness. Does your pharmacy provide multidisciplinary access to healthcare? Mental health, allied health practitioners etc.? Do you have essential equipment for out patients and even in-patients? What are your support services in place? Let us help you get ready at your preferred convenience level.



CODE	NAME	DESCRIPTION	DURATION	COST (EXCL VAT)
NHIL	Lite readiness service	Mind map and tools to redesign your pharmacy and its services for the NHI partnership - requirements for accreditation/ certification and the 10 Ideal pharmacy component checklist.	1 month	R13000
NHIC	Comprehensive readiness service	Receive the lite deliverables as well as stepwise guidance, assessment and recommendations to redesign your pharmacy for NHI suitability and partnership. Includes community engagement.	3 months	R45 000
NHIVIP	VIP readiness service	All the comprehensive deliverables as well as personal accompaniment in implementation of all 10 components and coaching/ staff training at your premise during your preferred times. Includes systems testing and launch.	6 months	R130 000
Comp	Pre/post license compliance	Various	Various	Various
OrgS	Organizational strategy	Various	Various	Various
RegI	Regulatory intelligence	Various	Various	Various
MarkM	Marketing material / artwork design or review	Various / mostly treated as hourly work	Various	Various

Ensure you discuss your project and requirements in depth before making this booking

G. QUALITY SYSTEM DOCUMENTS

To ensure quality:

Code	Name	Description	Duration	costs
SMF	Site Master file	Full site master file designed for your premise and activities	10 days	15 000
QUM	Quality Manual	A customised quality manual depicting your quality strategy for compliance	10 days	20 000
	SOPP	Pack of all	10 days	R5000
facAudit	Facility audit	Departmental / full audit GMP, GPP, GWP, GDP	Per schedule	R20 000
Prot	Protocols	Stability or validation protocols	Per request	Variable
QuC	For customized needs, contact our consultants prior to booking			

H. RECRUITMENT, RETAINER SERVICES & REPS

You can now opt into one of our recruiting services as an employer or an employee!

RECRUITMENT - Employer tiers

	Description	Unique Benefits						Costs (excl VAT)	Duration
		Candidate review & shortlisting	Contract negotiating	Induction / Scope / CPD training	Background / criminal checks	Listing & Advertising	Interviewing candidates		

Tier 1	Entry level tier satisfies the recruitment need of organizations wishing to be listed					X		FREE	Once off
Tier 2	Moderate tier satisfies the recruitment needs of organizations wishing to be assisted (1 vacancy)	X			x	X	x	R5000	1 month
Tier 3	Premium tier satisfies the recruitment needs of organizations wishing to be accompanied (1 vacancy)	X	x		x	X	x	R11000	3 months
Tier 4	Platinum tier satisfies the recruitment needs of organizations wishing to be pampered & customized (1 or more vacancies)	X	x	X	x	X	x	R30 000	6 months

Our wide extensive network of pharmacy professionals ensures we have the biggest pool of qualified candidates to pair with your skill requests.

no other fee or salary percentage commission will be required from the organization.



RECRUITMENT - Employee tiers

Here is the employee section. We have 3 tiers for you.

	Description	Unique Benefits					Costs (excl VAT)	Duration
		Submit to advert listing	Contract negotiating & Induction	Induction / Scope / CPD training	CV / resume upgrade	Interview preparation		
Tier 1	Entry level tier is mean to satisfy the recruitment need of	X			X		1000	Once off

	candidates wishing to simply list their cv/ resume							
Tier 2	Moderate tier is meant to satisfy the recruitment needs of candidates wishing to be assisted with their CV/resume as well as	X			X	X	R3000	1 month
Tier 3	Premium tier is meant to satisfy the recruitment needs of candidates wishing to be accompanied / bonus recruiter contacts and meeting directly	X	X	X	X	X	R10000	3 months

Submit your CV/ resume to be considered for any short- and long-term placements and vacancies.

REPS

Become a sales rep for Pharmers. Earn commission up to 30% selling our products and services in a predictable way. Be flexible, work remotely and on your own time! Using your social media or other channels, provide promotional information directly to customers. Training & ongoing support provided with the one-time initial joining fee of R500. A toolkit containing personalized rep codes, product and service images, descriptions and packages on offer is available to the reps.

Contact info@pharmers.co.za to receive an application form.



Retainers

You can now opt into one of our retainer packages that suits your company or individual need.

	Description	Unique Benefits	Costs	Duration
Package 1 (PPARet6)	Medico-pharmaceutical companies often require expert consulting and training for their organization. At various stages of their growth, they will need to receive accurate industry information, liaise with the authorities for various applications or queries as well as train new and existing employees towards high quality performance and compliance. Select from our GxP training (GMP, GPP, GCP, GWP, GRP), our Quality training (RP, QA) or even our regulatory affairs training (RA, PV). There are a lot more to pick from. Additionally enjoy services such as medicine registration, license application, amendments, various medical writing compilations / brochures, compliance / QMS documentations, inspection readiness, and more.	<ul style="list-style-type: none"> Unlimited (onsite/offsite) consulting work with designated recurring meeting slots and monthly industry specific updates and Regulatory / Pharmacovigilance / Quality Assurance or other recommendations Internal audits & assistance QMS / documentation review Unlimited (onsite / offsite) training requests with monthly dedicated refresher / upskilling training and or material Scheduled monthly calendar meetings Ongoing expert advice and recommendations / communication with priority booking 	<p>10 or less employees or 3 or less departments:</p> <p>R600 once off enrolment admin fee</p> <p>R4500 / monthly (Excluding VAT)</p> <p>-----</p> <p>11 or more employees or 4 or more departments:</p> <p>R600 once off enrolment admin fee</p> <p>R5600 / month Excluding VAT</p>	<u>Six months</u> from the time of enrolment with one complementary handover week
Package 2 (PPARet12)			<p>10 or less employees or 3 or less departments:</p> <p>R600 once off enrolment admin fee</p> <p>R4000/ monthly excluding VAT</p> <p>-----</p> <p>11 or more employees or 4 or more departments:</p> <p>R600 once off enrolment admin fee</p> <p>R5100 / month</p> <p>Excluding VAT</p>	<u>Twelve months</u> accompaniment from the date of enrolment with two complementary handover weeks
Package 3 (PPARetX)	Customised to client specific need			

I. TERMS & CONDITIONS

Before you make a booking (or payment confirmation), please note the following:

Terms & Conditions:

Our Terms and Conditions section is like a contract between us. Pharmers make information and services available to its customers, and customers should follow rules of engagement.

By booking a service with us, you agree to all of our terms and conditions as stated on this document and our website. We respect your privacy and ensure all personal information obtained through phone/email/ website is kept secure in accordance with the "POPIA" of South Africa (The Protection of Personal Information Act 4 of 2013). As the client, you will communicate any changes to orders before making said changes, failure to do so can result in withdrawal and cancellation of services upon breach. Online bookings must be made according to availability for the intended consultation date (at least 3 days before). -When you book for a paid service, an invoice for payment will be sent to you soon after. Make payment into Pharmers account (as shown below) within 24 hours to confirm the appointment. When you book a service, an invoice is valid and payable up to 72 hours from issue. -If this payment is not received through a proof of payment email (send pdf to info@pharmers.co.za) then the booking will automatically be cancelled. -Pharmers automatically provides confidentiality in all projects and consultations. If you desire a written & signed NDA, please request one by email. -Floorplans drawn have a maximum of 3 alterations with the original architect of plans and the timelines will be subject to availability of that architects. We cannot predict how quickly this will be. -Licencing services are limited to full initial submissions of applications.

These services do not include any subsequent need/requests for recordings or providing shop fittings etc. unless booked for such additional services. -Although Pharmers has an excellent track record of approvals, we cannot guarantee any outcome deliberated by the national authorities (SAPC, NDoH, SAHPRA). We may assist in correcting or appealing for reconsideration where appropriate. -All additional payments required to SAPC or SAHPRA are to be paid by the applicant directly and the proof of payment sent to Pharmers for inclusion in application documents. -You may request that Pharmers make those payments on your behalf as an applicant, by including these payments to your invoice. -For projects above R20 000, a 50% deposit can be requested to commence the project and the 40% balance due on submission (subject to case number). -Pharmers will not be held liable for delays incurred by applicants. -defaulters who refuse or fail to pay their balances after work has been done, relinquish their right to privacy. Pharmers may release their full name, IDs, and addresses or even business profile to recover funds any way it deems fit. Whether through legal or public means. -Pharmers will not be held liable for negative outcomes due to applicant doings. -Pharmers will not process any refunds for services booked; but can offer alterations or changes to the business' discretion. -Pharmers Refund policy as described for masterclasses can be found in the Academy tab. -Other specific terms and conditions can be found on invoice or in project sheet prior to making payment. -It is the client responsibility to ensure they understand fully what they are paying for.

Online bookings are required for consultation, must be made at least 3 days before the intended consultation date. Invoice must be paid in full to confirm. Face-to-face consultations will be booked at our office either on a Friday at least 3 days before. SITE visits must also be made 3 days prior and paid fully. When you book for a consultation, an invoice for payment will be sent to you soon after. Make payment into Pharmers' account (as shown below) within 24hours to confirm the appointment. If this payment is not received through a PDF proof of payment email (send pdf to info@pharmers.co.za) then the booking will automatically be cancelled. Pharmers provides confidentiality in all projects and consultations. If you desire a written & signed NDA, please request one by email. Floorplans drawn have a maximum of 3 alterations and the timelines will be subject to availability of our architects. We cannot predict how quickly this will be. Licencing services are limited to full initial submissions of applications. These services do not include any subsequent need for recordings or providing shop fittings etc. see our post-licensing services for more information. The DFUVIP is the exception. Although Pharmers has an excellent track record of approvals, we cannot guarantee any outcome deliberated by the national authorities (SAPC, NDoH, SAHPRA), should the need arise, we will assist in correcting or appealing for reconsideration as best we can. All additional payments/ fees required to SAPC or SAHPRA are to be paid by the applicant directly and the proof of payment sent to Pharmers. Use banking details on following page. Ensure the reference is correct. We can help you confirm For projects above R20 000, a 60/40 % split can be requested to commence the project and pay the 40% balance on submission; for projects above R100 000, a 33% x3 payment tranche can be paid every 2 months out of the 6. No liability for unauthorised changes on application forms or other late replies will be accepted by Pharmers. Late replies or responses leading to project cancellations and liabilities will not be accepted by Pharmers. A project is deemed cancelled after 7 days of inaction from the client side. Balance payments for split payment agreements are due 10 days after project begins or on the day of submission of the project. Penalty fees for late payments will apply at 5% increase immediately after first date of delay and accrue daily until payment is made. Cancelled projects can only be reinstated at the discretion of Pharmers after receiving a reinstating fee. Please note that all projects carry risk. We mitigate these with our experience and are generally successful. However, should a new requirement, rule or change occur during the application or processing of your license / project; it is outside of our scope and control. It is the client's responsibility to ensure the population statistics are recent and available Verbal discussions and communication from clients require an email follow up to ensure understanding on all parties. If you do not understand your project terms, please request clarity before signing. You will be liable for any misunderstanding leading to project failure.

No special or private conversations with any staff member will override or supersede these terms and conditions for trade.

Thanks again for your interest in Pharmers. We trust that you have found excellent value in your experience with us thus far.

TO MAKE a PAYMENT after receiving a quote or invoice; USE FOLLOWING DETAILS:

To pay Pharmers:

STANDARD BANK

ACCOUNT NAME: PHARMERS CONSULTING (PTY)

ACCOUNT NUMBER: 10 24 8528465

ACCOUNT TYPE: CHEQUE

BRANCH CODE: 051001

REFERENCE: **SERVICE CODE / INVOICE NUMBER**

To pay SAHPRA:

ABSA BANK

ACCOUNT NAME: SOUTH AFRICAN HEALTH PRODUCT REGULATORY AUTHORITY

ACCOUNT NUMBER: 40-5939-2080

ACCOUNT TYPE: CHEQUE

BRANCH CODE: 632005

REFERENCE: **SPECIFIC CODE**

To pay SAPC:

STANDARD BANK

ACCOUNT NAME: SOUTH AFRICAN PHARMACY COUNCIL

ACCOUNT NUMBER: 011 885 866

ACCOUNT TYPE: CHEQUE

REFERENCE: **PHARMACY NAME**

The next page is a pre-consultation / pre-project questionnaire that may help you describe your need better before we begin your project. Use it if needed and return to info@pharmers.co.za or academy@pharmers.co.za

We're here to partner with you on this exciting new journey and wish you the best outcome.

J. PRE-CONSULTATION QUESTIONNAIRE (FILL IF FURTHER CLARITY IS NECESSARY)

WHERE ARE YOU BASED GEOGRAPHICALLY?	
WHAT URGENCY DO YOU HAVE?	
WHAT IS THE NATURE OF YOUR REQUEST?	
WHAT OUTCOMES/ DELIVERABLES DO YOU REQUIRE FOR SATISFACTION?	
WHAT IS YOUR END-GOAL OBJECTIVE AFTER ACQUIRING THIS SERVICE?	
WHAT IS YOUR PAIN-POINT FOR NOT DOING THIS ON YOUR OWN?	
IS PERSONAL AND EXPERIENTIAL GUIDANCE SOMETHING YOU NEED?	
LIST ALL ADD-ON SERVICES YOU REQUIRE ABOVE THE CONSULTATION.	
DO YOU REQUIRE ADDITIONAL STRATEGIC GUIDANCE?	
WHEN WOULD YOU LIKE TO BOOK? DATE AND TIME?	
BY WHEN WOULD YOU LIKE THE PROJECT TO START AND FINISH? / DEADLINES?	
ANY OTHER REMARKS TO NOTE?	

Thanks again for your interest in Pharmers. We trust that you have found excellent value in your experience with us thus far.

Kindly familiarise yourself with our general Ts & Cs as listed on our website. For the case of appeals, please note there are no guarantees. The factual and motivational points will be highlighted to present in the best possible way and submitted at risk.

Disclaimer: Pharmers has successfully assisted hundreds of applicants on their various projects. We will not be held accountable of any failures in obtaining a license once correct application is submitted. The recommendations we give are according to GPP. Non-compliance liabilities will not be accepted. Please note that this purchased herein is non-refundable. If you are not satisfied, we may investigate the cause, adjust or replace the service at the discretion of the managing director.

If your project is compiled and or submitted, and you fail to pay the balance required on submission or any other follow up payment; Pharmers can cancel your application (notifying the authorities) and you will forfeit the entire project and any progress made. A reinstating fee will apply should the payment be received within time (discretion of Pharmers) of R2500.

K. SERVICE REQUEST FORM



Pharmers
In-Depth. Personalised. PharmaCare.

PHARMERS CONSULTING - VARIOUS PHARMERS SERVICES

Applicant Title:		First Name:	
Last name:		Current Position:	
Company:		Email:	
Company VAT Number:		Physical Street Address:	
Contact Number:		City/ Town:	
Current industry:		Date:	

SERVICE CODE SELECTION (please use all codes in above info sheet that apply)

Service Code e.g., DFUMD	Done-For-You ✓	A-La-Carte ✓	Apply Discount Code e.g., LEAP30
....			
....			
....			

Other / no code request:

All license and permit projects require a project call. Please select your preferred date and time

Date:	
Time:	

NB: This application form needs to be completed in full; Enter the correct service codes and select either done-for-you or A-la-carte; If you have a discount code (as seen on social media or our website) please insert it in the correct (last) column

Total Services (Cost):	R	Other Comments:	
TOTAL Payment Due including 15% VAT:	R		

PAYMENT OPTIONS SELECTION (please tick box which applies)

One Full Payment	<input type="checkbox"/>	2 x 50% (projects above R20 000)	<input type="checkbox"/>	3 x 33% (projects above R100 000)	<input type="checkbox"/>
-------------------------	--------------------------	---	--------------------------	--	--------------------------

Please return completed form to info@pharmers.co.za for an invoice to be generated for your selection

I have read all the terms and conditions and agree

Applicant Signature: Date: ... / ... / 2026