

ROBIEL®

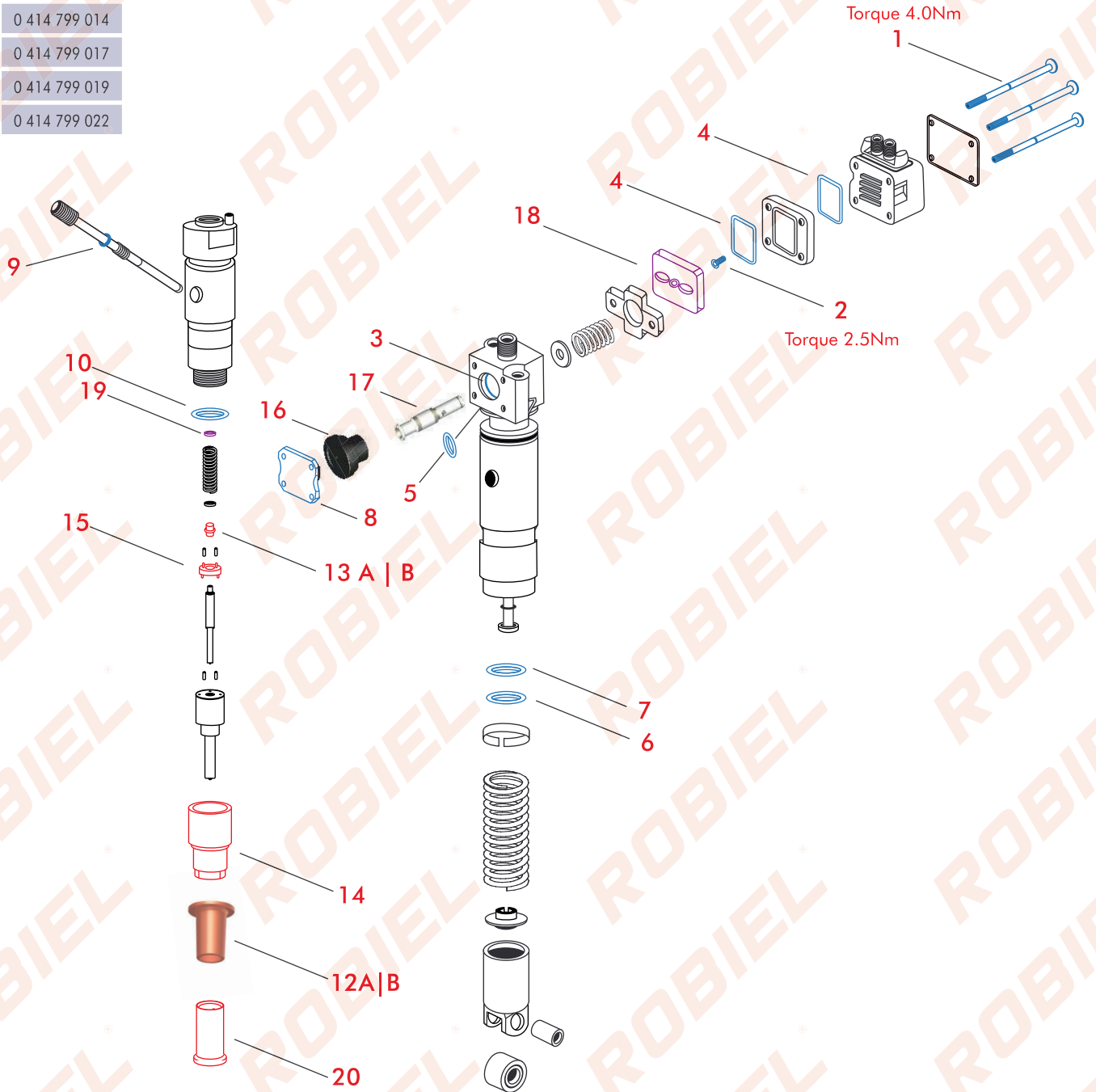
EUP Units
Unidades EUP



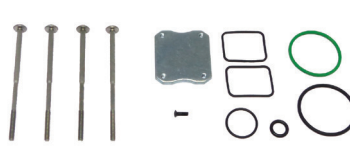

MBB EUP | PLD - SMALLER UNIT
 UNIDAD MBB EUP | PLD - MENOR

5914 | 915 | Acello 915C | 1620 | 1215
 1218 | 1418 | 1723 | 1728 | 1933
 Atego 2425
 Atego 2428

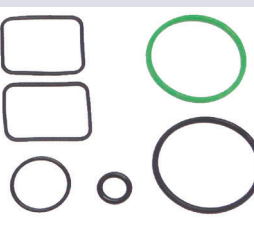

UNIT CODE
0 414 799 003
0 414 799 004
0 414 799 006
0 414 799 008
0 414 799 012
0 414 799 013
0 414 799 014
0 414 799 017
0 414 799 019
0 414 799 022



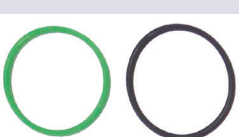

420.90.08		REPAIR PARTS - EUP 712C UNIT W/ SCREW		
		<i>REPARACION UNIDAD EUP 712C C/ TORNILLO</i>		
REFERENCE		F 00H N37 070		
Nº	ROBIEL CODE	REFERENCE	DESCRIPTION	PACK
1	250.20.70	-	Bolt - Tornillo (torque 4.0Nm)	04un.
2	250.21.70	F 00H N35 725	Bolt - Tornillo (torque 2.5Nm)	01un.
3	421.21.18	F 00H N35 723	O-ring - Anillo	01un.
4	421.23.31	F 00H N37 008	Profile Ring - Anillo Perfil	02un.
5	421.00.925	F 00H N35 985	O-ring - Anillo	01un.
6	421.03.726	F 00H N37 622	O-ring - Anillo	01un.
7	421.03.826	F 00H N37 621	O-ring - Anillo	01un.
8	801.00.40	-	Plate - Placa	01un.

420.99.994		REPAIR RINGS SET - MBB 4C UNIT COMPLETE		
		<i>REPARACION ANILLOS UNIDAD MBB 4 CIL COMPLETA</i>		
REFERENCE		Units 0 414 799 003 008		
Nº	ROBIEL CODE	REFERENCE	DESCRIPTION	PACK
3	421.21.18	F 00H N35 723	O-ring - Anillo	01un.
4	421.23.31	F 00H N37 008	Profile Ring - Anillo Perfil	02un.
5	421.00.925	F 00H N35 985	O-ring - Anillo	01un.
6	421.03.726	F 00H N37 622	O-ring - Anillo	01un.
7	421.03.826	F 00H N37 621	O-ring - Anillo	01un.

420.75.648		REPAIR RINGS SET - MBB 712C 4C UNIT		
		<i>REPARACION ANILLOS UNIDAD MBB 712C 4 CIL</i>		
REFERENCE		F 00H N37 454 A 028 997 56 48		
Nº	ROBIEL CODE	REFERENCE	DESCRIPTION	PACK
6	421.03.726	F 00H N37 622	O-ring - Anillo	01un.
7	421.03.826	F 00H N37 621	O-ring - Anillo	01un.

420.37.003		REPAIR PARTS - MBB 712C NOZZLE HOLDER		
		<i>REPARACION PORTA INYECTOR MBB 712C</i>		
REFERENCE		-		
Nº	ROBIEL CODE	REFERENCE	DESCRIPTION	PACK
9	421.01.130	A5419970545 2 430 210 082	O-ring - Anillo	01un.
10	421.02.130	A5419970645 2 430 210 081	O-ring - Anillo	01un.
12	600.03.01	F 00Z W00 001 906 017 07 60	Seal Ring - Manguito Sellado	01un.




SPARE PARTS Repuestos				
Nº	ROBIEL CODE	REFERENCE	DESCRIPTION	PACK
2	250.21.70	-	Bolt - Allen - Unit Amature <i>Tornillo Placa Atraque Unidades</i>	06un.
3	421.21.18	F 00H N35 723	O-Ring - MBB Unit - 20.50x1.70mm <i>Anillo Unidad MBB</i>	06un.
4	421.23.31	F 00H N37 008	Profile Ring - Solenoid - 27.30x34.50x1.70mm <i>Anillo Perfil Solenoide</i>	12un.
5	421.00.925	F 00H N35 985	O-Ring - MBB Unit - 9.00x2.50mm <i>Anillo Unidad MBB</i>	06un.
6	421.03.726	F 00H N37 622	O-Ring - MBB 712C Unit - 36.00x2.60mm <i>Anillo Unidad MBB 712C</i>	06un.
7	421.03.826	F 00H N37 621	O-Ring - MBB 712C Unit - 38.00x2.60mm <i>Anillo Unidad MBB 712C</i>	06un.
9	421.01.130	A5419970545	O-Ring - MBB Injection Unit - 11.00x3.00mm <i>Anillo Unidad Inyectora MBB</i>	10un.
10	421.02.130	A5419970645	O-Ring - MBB Injection Unit - 21.00x3.00mm <i>Anillo Unidad Inyectora MBB</i>	10un.
12A	600.03.01	F 00Z W00 001 906 017 07 60	Seal Ring - Smaller MBB 2324K Nozzle Holder - 17.00mm <i>Manguito Sellado de la Tobera MBB 2324K Menor</i>	06un.
12B	600.03.02	906 017 05 60	Seal Ring - Larger MBB 2324K Nozzle Holder - 19.00mm <i>Manguito Sellado de la Tobera MBB 2324K Mayor</i>	06un.
13A	305.02.11	2 433 124 377 F 00Z B20 002	Pin - Pressure - 712 Electronic Nozzle <i>Top de Presion de la Tobera 712 Electronica</i>	06un.
13B	305.02.12	2 433 124 393 F 00Z B20 001	Pin - Pressure - EU1 / EUP Unit Nozzle <i>Top de Presion de la Tobera Unidad EU1 / EUP</i>	06un.
14	315.06.27	2 433 349 189	Nut - Nozzle-Retaining MBB 712/914/1215 Electronic <i>Tapa de la Tobera MBB 712/914/1215 Electronica</i>	01un.
15	D00.36.221	2 430 136 221 F 00Z Z20 003	Intermediate Disc - MBB / Scania Electronic <i>Disco Intermedio MBB / Scania Electronica</i>	01un.
20	220.03.08	-	Protective Cap - Injectors / Units Nozzle - 7.00mm <i>Tapa Protectora p/ Tobera Inyectores / Unidades - 7.00mm</i>	01kit.
R1	340.03.15	A 906 092 0510	Valve - Return - MBB 1415/1215C/714 - 4.5kg <i>Valvula Retorno MBB 1415/1215C/714</i>	01un.
R2	340.03.151	A 906 092 1210	Valve - Return - MBB OM 906 LA - 4.5kg <i>Valvula Retorno MBB OM 906 LA</i>	01un.
R3	340.03.26	-	Valve - Return - MBB 1938 Power Circuit - 0.5Kg <i>Valvula de Retorno Circuito de Alimentacion MBB 1938</i>	01un.
R4	002.01.1433	A 906 070 1433	Tube for Fuel Injection - Electronic MBB 712C <i>Tubo Inyector MBB 712C Electronica</i>	01un.



16

PLUG - EUI | PDE MBB UNIT
TAPON DE LA UNIDAD EUI | PDE MBB



ROBIEL CODE	REFERENCE	THICKNESS(mm)
165.09.50	-	9.50
165.09.51	-	9.51
165.09.52	-	9.52
165.09.53	-	9.53
165.09.54	-	9.54
165.09.55	-	9.55
165.09.56	-	9.56
165.09.57	-	9.57
165.09.58	-	9.58
165.09.59	-	9.59
165.09.60	-	9.60
165.09.61	-	9.61
165.09.62	-	9.62
165.09.63	-	9.63
165.09.64	-	9.64
165.09.66	-	9.66
165.09.67	-	9.67
165.09.68	-	9.68

02 UNITS



415.00.07

BOSCH EUP / PLD PLUG KIT
KIT DE TAPONES PARA UNIDADES BOSCH EUP / PLD



06 UNITS BY MEASURE

90 UNITS

17

ELEMENT - EUI | EUP UNIT VALVE
ELEMENTO VALVULA UNIDADES EUI | EUP



ROBIEL CODE	REFERENCE	THICKNESS(mm)
340.05.01	-	7.000
340.05.02	-	7.005
340.05.03	-	7.010
340.05.04	-	7.015
340.05.05	-	7.020
340.05.06	-	7.025
340.05.07	-	7.030
340.05.08	-	7.040
340.05.09	-	7.050
340.05.10	-	7.060
340.05.11	-	7.070

01 UNIT



415.00.06

BOSCH EUI / PDE - EUP / PLD VALVES KIT
KIT DE VALVULAS PARA UNIDADES BOSCH EUI / PDE - EUP / PLD



06 UNITS BY MEASURE

66 UNITS

18 **ARMATURE PLATE - EUI | EUP UNIT**
PLACA ATRAQUE UNID EUI | EUP 
 Ø Int.: 18.50 Ø Ext.: 24.00



ROBIEL CODE	REFERENCE	THICKNESS(mm)
801.03.85	-	3.85
801.03.87	-	3.87
801.03.89	-	3.89
801.03.91	-	3.91
801.03.93	-	3.93
801.03.95	-	3.95
801.03.400	-	4.00
801.03.405	-	4.05
801.03.410	-	4.10

04 UNITS

415.00.09

BOSCH EUI / PDE - EUP / PLD ARMATURE PLATE KIT
 KIT DE PLACAS DE ATRACAMIENTO PARA UNIDADES BOSCH EUI / PDE - EUP / PLD



06 UNITS BY MEASURE

54 UNITS

19 **SHIM - EUI | PDE - EUP | PLD UNIT NOZZLE**
CALZO TOBERA UNIDAD EUI | PDE - EUP | PLD 
 Ø Int.: 3.00 Ø Ext.: 8.00



ROBIEL CODE	REFERENCE	THICKNESS(mm)
803.09.080	2 430 102 280	0.80
803.09.085	-	0.85
803.09.090	2 430 102 290	0.90
803.09.095	-	0.95
803.09.10	2 430 102 300	1.00
803.09.105	-	1.05
803.09.11	2 430 102 310	1.10
803.09.115	-	1.15
803.09.12	2 430 102 320	1.20
803.09.125	-	1.25
803.09.13	2 430 102 330	1.30
803.09.135	-	1.35
803.09.14	2 430 102 340	1.40
803.09.145	-	1.45
803.09.15	2 430 102 350	1.50
803.09.155	-	1.55
803.09.16	2 430 102 360	1.60
803.09.165	-	1.65
803.09.17	2 430 102 370	1.70
803.09.175	-	1.75
803.09.18	2 430 102 380	1.80
803.09.185	-	1.85
803.09.19	2 430 102 390	1.90

12 UNITS



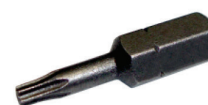
323.01.20

Nozzle tester Adapter
 MBB Electronic Injector
 Adaptador Prueba Tobera Inyector
 MBB Electronica 



323.01.06

Tip for Torque Wrench
 MBB Electronic Unit Screw
 Puntera Torx del Tornillo Unidad
 Electronica MBB 



323.01.11

Tip for Torque Wrench
 Unit Screw
 Puntera Torx del Tornillo Unidad 



323.01.3241

Rotating Vise W /
Indexer Pin
Morsa Giratoria con Pin index



323.01.325

Adjusting Bracket
MBB EUP Unit
Soporte de Regulacion Unidad MBB EUP



323.02.12

Cleaning Brush
Cepillo de Limpieza
Ø 10.00mm



323.02.13

Cutting Oil
Aceite corte



323.02.16

Small Torque Wrench
Mini Torquimetro
1 à 8NM



323.01.792

Fixing Tool - EUP Unit
Step Plate
Herramienta Fijacion de la Placa de Apoyo Unidad EUP



323.01.98

Housing Tool - EUI/EUP Valve
Herramienta Alojamiento Valvula EUI/EUP
7.000 to 7.030



323.01.99

Polishing Tool - EUI/EUP Seat
Herramienta Acabamiento Asiento EUI/EUP
7.000 to 7.030



323.01.100

Grinding Tool - EUI/EUP Seat
Herramienta Rectificar Asiento EUI/EUP
7.000 to 7.030



323.02.18

Housing Tool - EUI/EUP Valve
Herramienta Alojamiento Valvula EUI/EUP
7.040 to 7.070



323.02.19

Polishing Tool - EUI/EUP Seat
Herramienta Acabamiento Asiento EUI/EUP
7.040 to 7.070



323.02.20

Grinding Tool - EUI/EUP Seat
Herramienta Rectificar Asiento EUI/EUP
7.040 to 7.070



323.50.041

Bosch EUI | EUP Valve
Changeover kit
*Kit de Herramientas Unidades
Bosch EUI | EUP - Troca de la Valvula*



323.50.111

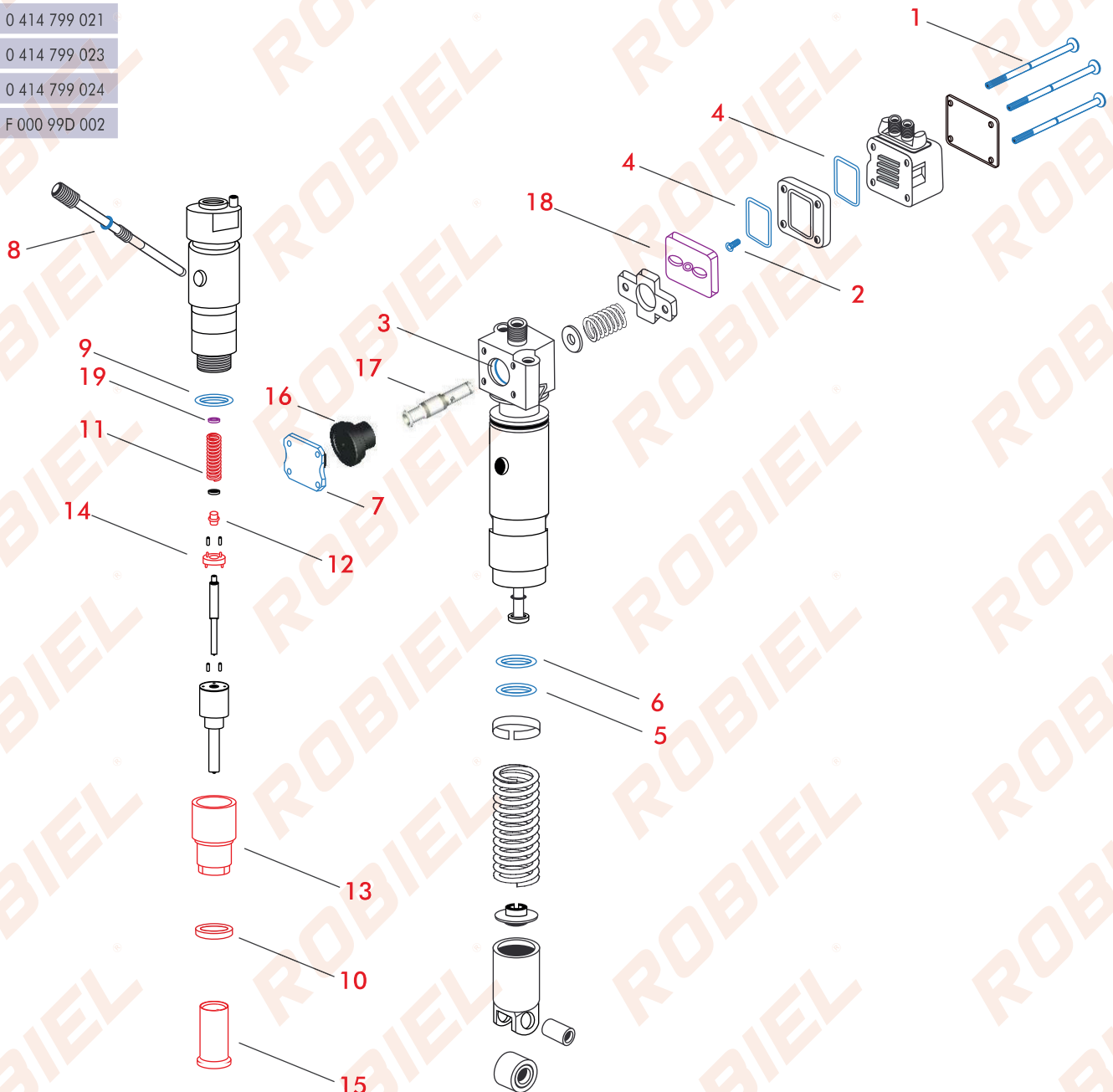
Bosch EUI | EUP Units Tool Kit
*Kit de Herramientas Unidades
Bosch EUI | EUP*



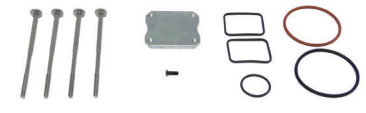

MBB EUP | PLD - BIGGER UNIT
 UNIDAD MBB EUP | PLD - MAYOR

UNIT CODE
0 414 799 001
0 414 799 005
0 414 799 007
0 414 799 009
0 414 799 010
0 414 799 011
0 414 799 015
0 414 799 016
0 414 799 018
0 414 799 020
0 414 799 021
0 414 799 023
0 414 799 024
F 000 99D 002

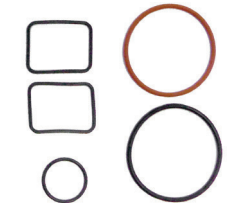

457|541|542|
 1938LS|2638LS|1938S
 26445S|1944S|2638S1634LS
 ACXOR2035|2040|2044|2540|2544|2644



420.70.69		REPAIR PARTS - EUP 1938 UNIT W/ SCREW		
		REPARACION UNIDAD EUP 1938 C/ TORNILLO		
REFERENCE		F 00H N37 069		
Nº	ROBIEL CODE	REFERENCE	DESCRIPTION	PACK
1	250.20.70	-	Bolt - Tornillo (torque 4.0Nm)	04un.
2	250.21.70	F 00H N35 725	Bolt - Tornillo (torque 2.5Nm)	01un.
3	421.21.18	F 00H N35 723	O-ring - Anillo	01un.
4	421.23.31	F 00H N37 008	O-ring - Anillo	02un.
5	421.04.624	023 997 65 48	O-ring - Anillo	01un.
6	421.05.025	023 997 64 48	O-ring - Anillo	01un.
7	801.00.40	-	Plate - Placa	01un.

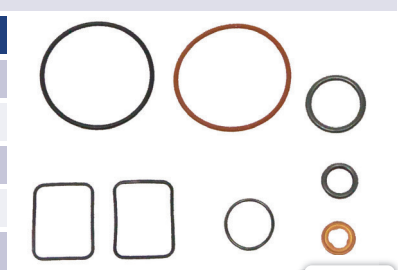

420.37.070		REPAIR RINGS SET - MBB 1938 6C UNIT		
		REPARACION ANILLOS UNIDAD MBB 1938 6C		
REFERENCE				
Nº	ROBIEL CODE	REFERENCE	DESCRIPTION	PACK
3	421.21.18	F 00H N35 723	O-ring - Anillo	01un.
4	421.23.31	F 00H N37 008	Profile Ring - Anillo Perfil	02un.
5	421.04.624	023 997 65 48	O-ring - Anillo	01un.
6	421.05.025	023 997 64 48	O-ring - Anillo	01un.

420.37.001		REPAIR PARTS - MBB 1938 NOZZLE HOLDER		
		REPARACION PORTA INYECTOR MBB 1938		
REFERENCE				
Nº	ROBIEL CODE	REFERENCE	DESCRIPTION	PACK
8	421.01.130	A5419970545 2 430 210 082	O-ring - Anillo	01un.
9	421.02.130	A5419970645 2 430 210 081	O-ring - Anillo	01un.
10	600.02.01	906 017 02 60	Washer - Arandela	01un.




420.37.002		REPAIR PARTS - MBB 1938 NOZZLE HOLDER UNIT		
		REPARACION UNIDAD / PORTA INYECTOR MBB 1938		
REFERENCE				
Nº	ROBIEL CODE	REFERENCE	DESCRIPTION	PACK
3	421.21.18	F 00H N35 723	O-ring - Anillo	01un.
4	421.23.31	F 00H N37 008	Profile Ring - Anillo Perfil	02un.
5	421.04.624	023 997 65 48 F 00H N35 933	O-ring - Anillo	01un.
6	421.05.025	023 997 64 48 F 00H N35 932	O-ring - Anillo	01un.
8	421.01.130	A5419970545 2 430 210 082	O-ring - Anillo	01un.
9	421.02.130	A5419970645 2 430 210 081	O-ring - Anillo	01un.
10	600.02.01	906 017 02 60	Washer - Arandela	01un.

SPARE PARTS
Repuestos

Nº	ROBIEL CODE	REFERENCE	DESCRIPTION	PACK
2	250.21.70	-	Bolt - Allen - Unit Amature <i>Tornillo Placa Atraque Unidades</i>	06un.
3	421.21.18	-	O-Ring - MBB 1938 Unit - 20.50x1.70mm <i>Anillo Unidad MBB 1938</i>	06un.
4	421.23.31	F 00H N37 008	Profile Ring - Solenoid - 27.30x34.50x1.70mm <i>Anillo Perfil Solenoide</i>	12un.
5	421.04.624	023 997 65 48	O-Ring - MBB 1938 Unit - 45.00x2.50mm <i>Anillo Unidad MBB 1938</i>	06un.
6	421.05.025	023 997 64 48	O-Ring - MBB 1938 Unit - 47.00x2.50mm <i>Anillo Unidad MBB 1938</i>	06un.
8	421.01.130	A5419970545	O-Ring - MBB 1938 Injection Unit - 11.00x3.00mm <i>Anillo Unidad Inyectora MBB 1938</i>	10un.
9	421.02.130	A5419970645	O-Ring - MBB 1938 Injection Unit - 21.00x3.00mm <i>Anillo Unidad Inyectora MBB 1938</i>	10un.
10	600.02.01	906 017 02 60	Washer - MBB Eletronic Unit Nozzle <i>Arandela Tobera Unidad MBB Eletronic</i>	01kit.
11	225.01.37	2 434 614 041	Spring - MBB 1938 Nozzle Holder Pressure <i>Resorte de Presion del Porta Inyector MBB 1938</i>	01un.
12	305.02.12	2 433 124 393 F 00Z B20 001	Pin - Pressure - EUI / EUP Unit Nozzle <i>Top de Presion de la Tobera Unidad EUI / EUP</i>	06un.
13	315.06.22	2 433 349 503 2 433 349 189	Nut - Nozzle-Retaining 1938 MBB <i>Tapa de la Tobera MBB 1938</i>	02un.
14	D00.36.221	2 430 136 221 F 00Z Z20 003	Intermediate Disc - MBB / Scania Electronic <i>Disco Intermedia MBB / Scania Electronica</i>	01un.
15	220.03.08	-	Protective Cap - Injectors / Units Nozzle - 7.00mm <i>Tapa Protectora p/ Tobera Inyectores / Unidades - 7.00mm</i>	01kit.
R1	340.03.191	A 457 070 0246	Valve - Gear Pump OM 457 w/ Filter <i>Valvula Bomba de Alimentacion OM 457</i>	01un.
R2	340.03.26	Pressão 0.5Kg	Valve - Return - MBB 1938 Power Circuit <i>Valvula de Retorno Circuito de Alimentacion MBB 1938</i>	01un.
R3	002.01.1033	A 457 070 1033	Tube for Fuel Injection - Electronic MBB 1938 <i>Tubo Inyector MBB 1938 Electronica</i>	01un.



16

PLUG - EUI | PDE MBB UNIT
TAPON DE LA UNIDAD EUI | PDE MBB



ROBIEL CODE	REFERENCE	THICKNESS(mm)
165.09.50	-	9.50
165.09.51	-	9.51
165.09.52	-	9.52
165.09.53	-	9.53
165.09.54	-	9.54
165.09.55	-	9.55
165.09.56	-	9.56
165.09.57	-	9.57
165.09.58	-	9.58
165.09.59	-	9.59
165.09.60	-	9.60
165.09.61	-	9.61
165.09.62	-	9.62
165.09.63	-	9.63
165.09.64	-	9.64
165.09.66	-	9.66
165.09.67	-	9.67
165.09.68	-	9.68

02 UNITS



415.00.07

BOSCH EUP / PLD PLUG KIT
KIT DE TAPONES PARA UNIDADES BOSCH EUP / PLD



06 UNITS BY MEASURE

90 UNITS

17

ELEMENT - EUI | EUP UNIT VALVE
ELEMENTO VALVULA UNIDADES EUI | EUP



ROBIEL CODE	REFERENCE	THICKNESS(mm)
340.05.01	-	7.000
340.05.02	-	7.005
340.05.03	-	7.010
340.05.04	-	7.015
340.05.05	-	7.020
340.05.06	-	7.025
340.05.07	-	7.030
340.05.08	-	7.040
340.05.09	-	7.050
340.05.10	-	7.060
340.05.11	-	7.070

01 UNITS



415.00.06

BOSCH EUI / PDE - EUP / PLD VALVES KIT
KIT DE VALVULAS PARA UNIDADES BOSCH EUI / PDE - EUP / PLD



06 UNITS BY MEASURE

66 UNITS

18 **ARMATURE PLATE - EUI | EUP UNIT**
PLACA ATRAQUE UNID EUI | EUP 
 Ø Int.: 18.50 Ø Ext.: 24.00



ROBIEL CODE	REFERENCE	THICKNESS(mm)
801.03.85	-	3.85
801.03.87	-	3.87
801.03.89	-	3.89
801.03.91	-	3.91
801.03.93	-	3.93
801.03.95	-	3.95
801.03.400	-	4.00
801.03.405	-	4.05
801.03.410	-	4.10

04 UNITS

415.00.09

BOSCH EUI / PDE - EUP / PLD ARMATURE PLATE KIT
 KIT DE PLACAS DE ATRACAMIENTO PARA UNIDADES BOSCH EUI / PDE - EUP / PLD



06 UNITS BY MEASURE

54 UNITS

19 **SHIM - EUI | PDE - EUP | PLD UNIT NOZZLE**
CALZO TOBERA UNIDAD EUI | PDE - EUP | PLD 
 Ø Int.: 3.00 Ø Ext.: 8.00



ROBIEL CODE	REFERENCE	THICKNESS(mm)
803.09.080	2 430 102 280	0.80
803.09.085	-	0.85
803.09.090	2 430 102 290	0.90
803.09.095	-	0.95
803.09.10	2 430 102 300	1.00
803.09.105	-	1.05
803.09.11	2 430 102 310	1.10
803.09.115	-	1.15
803.09.12	2 430 102 320	1.20
803.09.125	-	1.25
803.09.13	2 430 102 330	1.30
803.09.135	-	1.35
803.09.14	2 430 102 340	1.40
803.09.145	-	1.45
803.09.15	2 430 102 350	1.50
803.09.155	-	1.55
803.09.16	2 430 102 360	1.60
803.09.165	-	1.65
803.09.17	2 430 102 370	1.70
803.09.175	-	1.75
803.09.18	2 430 102 380	1.80
803.09.185	-	1.85
803.09.19	2 430 102 390	1.90

12 UNITS



323.01.20

Nozzle tester Adapter
 MBB Electronic Injector
 Adaptador Prueba Tobera Inyector
 MBB Electronica



323.01.06

Tip for Torque Wrench
 MBB Electronic Unit Screw
 Puntera Torx del Tornillo Unidad
 Electronica MBB



323.01.11

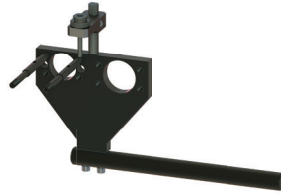
Tip for Torque Wrench
 Unit Screw
 Puntera Torx del Tornillo Unidad





323.01.3241

Rotating Vise W /
Indexer Pin
Morsa Giratoria con Pin index



323.01.325

Adjusting Bracket
MBB EUP Unit
Soporte de Regulacion Unidad MBB EUP



323.02.12

Cleaning Brush
Cepillo de Limpieza
Ø 10.00mm



323.02.13

Cutting Oil
Aceite corte



323.02.16

Small Torque Wrench
Mini Torquimetro
1 ò 8NM



323.01.792

Fixing Tool - EUP Unit
Step Plate
Herramienta Fijacion de la Placa de
Apoyo Unidad EUP



323.01.98

Housing Tool - EUI/EUP Valve
Herramienta Alojamiento Valvula EUI/EUP
7.000 to 7.030



323.01.99

Polishing Tool - EUI/EUP Seat
Herramienta Acabamiento Asiento EUI/EUP
7.000 to 7.030



323.01.100

Grinding Tool - EUI/EUP Seat
Herramienta Rectificar Asiento EUI/EUP
7.000 to 7.030



323.02.18

Housing Tool - EUI/EUP Valve
Herramienta Alojamiento Valvula EUI/EUP
7.040 to 7.070



323.02.19

Polishing Tool - EUI/EUP Seat
Herramienta Acabamiento Asiento EUI/EUP
7.040 to 7.070



323.02.20

Grinding Tool - EUI/EUP Seat
Herramienta Rectificar Asiento EUI/EUP
7.040 to 7.070



323.50.041

Bosch EUI | EUP Valve
Changeover kit
Kit de Herramientas Unidades
Bosch EUI | EUP - Troca de la Valvula



323.50.111

Bosch EUI | EUP Units Tool Kit
Kit de Herramientas Unidades
Bosch EUI | EUP

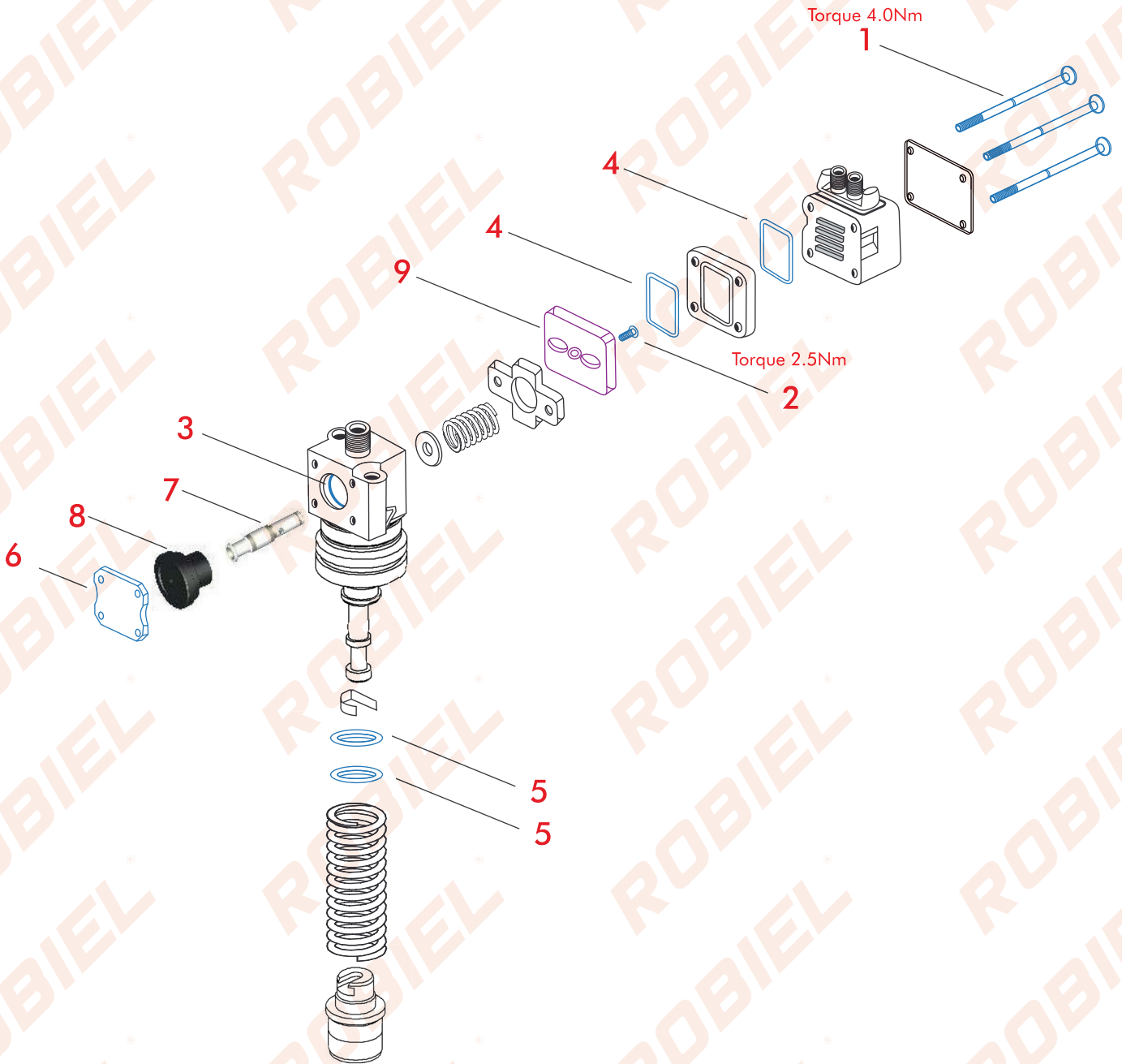




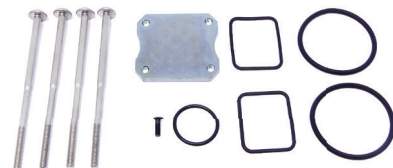
VOLVO EUP UNIT
UNIDAD VOLVO EUP

Volvo L120E | L90E | L70E |
EC210B | EC140B | KHD | Deutz
D6D Tier 2 | D4D | PLD 1A100

UNIT CODE
0 414 750 002
0 414 750 003
0 414 750 004



420.00.52		REPAIR PARTS - EUP VOLVO UNIT		
REFERENCE		F 000 419 052 - 0 414 750 002 0 414 750 003 0 414 750 004		
Nº	ROBIEL CODE	REFERENCE	DESCRIPTION	PACK
1	250.20.70	-	Bolt - Tornillo (torque 4.0Nm)	04un.
2	250.21.70	F 00H N35 725	Bolt - Tornillo (torque 2.5Nm)	01un.
3	421.21.18	F 00H N35 723	O-ring - Anillo	01un.
4	421.23.31	F 00H N37 008	Profile Ring - Anillo Perfil	02un.
5	421.03.826	F 00H N37 621	O-ring - Anillo	02un.
6	801.00.40	-	Placa	01un.



SPARE PARTS				
Repuestos				
Nº	ROBIEL CODE	REFERENCE	DESCRIPTION	PACK
2	250.21.70	-	Bolt - Allen - Unit Amature <i>Tornillo Placa Atraque Unidades</i>	06un.
3	421.21.18	-	O-Ring - VolvoUnit - 20.50x1.70mm <i>Anillo Unidad Volvo</i>	06un.
4	421.23.31	-	Profile Ring - Solenoid - 27.30x34.50x1.70mm <i>Anillo Perfil Solenoide</i>	12un.



7	ELEMENT - EUI EUP UNIT VALVE		
ELEMENTO VALVULA UNIDADES EUI EUP			
ROBIEL CODE	REFERENCE	THICKNESS(mm)	
340.05.01	-	7.000	
340.05.02	-	7.005	
340.05.03	-	7.010	
340.05.04	-	7.015	
340.05.05	-	7.020	
340.05.06	-	7.025	
340.05.07	-	7.030	
340.05.08	-	7.040	
340.05.09	-	7.050	
340.05.10	-	7.060	
340.05.11	-	7.070	
01 UNIT			



415.00.06 BOSCH EUI / PDE - EUP / PLD VALVES KIT
KIT DE VALVULAS PARA UNIDADES BOSCH EUI / PDE - EUP / PLD

06 UNITS BY MEASURE

66 UNITS

8

PLUG - EUI | PDE MBB UNIT
TAPON DE LA UNIDAD EUI | PDE MBB



ROBIEL CODE	REFERENCE	THICKNESS(mm)
165.09.50	-	9.50
165.09.51	-	9.51
165.09.52	-	9.52
165.09.53	-	9.53
165.09.54	-	9.54
165.09.55	-	9.55
165.09.56	-	9.56
165.09.57	-	9.57
165.09.58	-	9.58
165.09.59	-	9.59
165.09.60	-	9.60
165.09.61	-	9.61
165.09.62	-	9.62
165.09.63	-	9.63
165.09.64	-	9.64

02 UNITS

415.00.07

BOSCH EUP / PLD PLUG KIT
KIT DE TAPONES PARA UNIDADES BOSCH EUP / PLD



06 UNITS BY MEASURE

90 UNITS

323.01.20

Nozzle tester Adapter
MBB Electronic Injector
Adaptador Prueba Tobera Inyector
MBB Electronica



323.01.06

Tip for Torque Wrench
MBB Electronic Unit Screw
Puntera Torx del Tornillo Unidad
Electronica MBB



323.01.11

Tip for Torque Wrench
Unit Screw
Puntera Torx del Tornillo Unidad



9

ARMATURE PLATE - EUI | EUP UNIT
PLACA ATRAQUE UNID EUI | EUP



Ø Int.: 18.50 Ø Ext.: 24.00

ROBIEL CODE	REFERENCE	THICKNESS(mm)
801.03.85	-	3.85
801.03.87	-	3.87
801.03.89	-	3.89
801.03.91	-	3.91
801.03.93	-	3.93
801.03.95	-	3.95
801.03.400	-	4.00
801.03.405	-	4.05
801.03.410	-	4.10

04 UNITS

415.00.09

BOSCH EUI / PDE - EUP / PLD ARMATURE PLATE KIT
KIT DE PLACAS DE ATRACAMIENTO PARA UNIDADES BOSCH EUI / PDE - EUP / PLD



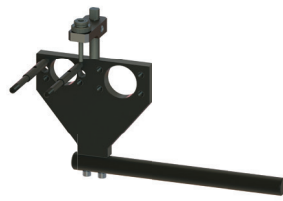
06 UNITS BY MEASURE

54 UNITS



323.01.3241

Rotating Vise W /
Indexer Pin
Morsa Giratoria con Pin index



323.01.325

Adjusting Bracket
MBB EUP Unit
Soporte de Regulacion Unidad MBB EUP



323.02.12

Cleaning Brush
Cepillo de Limpieza
Ø 10.00mm



323.02.13

Cutting Oil
Aceite corte



323.02.16

Small Torque Wrench
Mini Torquimetro
1 à 8NM



323.01.792

Fixing Tool - EUP Unit
Step Plate
Herramienta Fijacion de la Placa de Apoyo Unidad EUP



323.01.98

Housing Tool - EUI/EUP Valve
Herramienta Alojamiento Valvula EUI/EUP
7.000 to 7.030



323.01.99

Polishing Tool - EUI/EUP Seat
Herramienta Acabamiento Asiento EUI/EUP
7.000 to 7.030



323.01.100

Grinding Tool - EUI/EUP Seat
Herramienta Rectificar Asiento EUI/EUP
7.000 to 7.030



323.02.18

Housing Tool - EUI/EUP Valve
Herramienta Alojamiento Valvula EUI/EUP
7.040 to 7.070



323.02.19

Polishing Tool - EUI/EUP Seat
Herramienta Acabamiento Asiento EUI/EUP
7.040 to 7.070



323.02.20

Grinding Tool - EUI/EUP Seat
Herramienta Rectificar Asiento EUI/EUP
7.040 to 7.070



323.50.041

Bosch EUI | EUP Valve
Changeover kit
Kit de Herramientas Unidades
Bosch EUI | EUP - Troca de la Valvula



323.50.111

Bosch EUI | EUP Units Tool Kit
Kit de Herramientas Unidades
Bosch EUI | EUP

