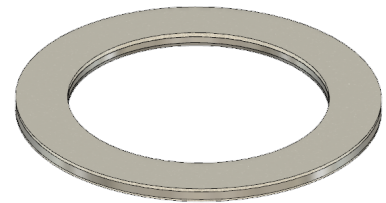
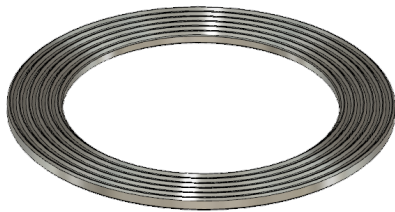




# ACHE (Air Cooled Heat Exchanger) Gasket Product Range

## Description:

3S ACHE gaskets are manufactured as a Kammprofile KP-1 seal with a range of metallic core and sealing layers available. The Kammprofile serrations are in accordance with ASME B16.20-2017 (figure GM-2.1-1). The core thickness on these style gaskets is typically 1/16" (1.6mm) or 1/8" (3.2mm).



PLUG DESCRIPTION	PLUG SIZE
G5	5/8
G6	3/4
G7	7/8
G8	1
G9	1 1/8
G10	1 1/4
G11	1 3/8
G12	1 1/2
G13	1 5/8
G14	1 3/4

## Standard Stock

### Cores

Carbon Steel

304 SS

316 SS

Sealing Layers

Graphite (all grades)

PTFE (all grades)

Mica

Ceramic

CNAF

Other core materials are available on request with a quick turnaround time.

