



CAMBRIDGE WATERFRONT
DEVELOPMENT, INC.

Community Update Meeting

July 31, 2025



WELCOME & INTRODUCTIONS







Yacht Maintenance

Working Waterfront



Maritime History



Cambridge Harbor



CAMBRIDGE HARBOR

PROPOSED LAND USE GUIDELINES



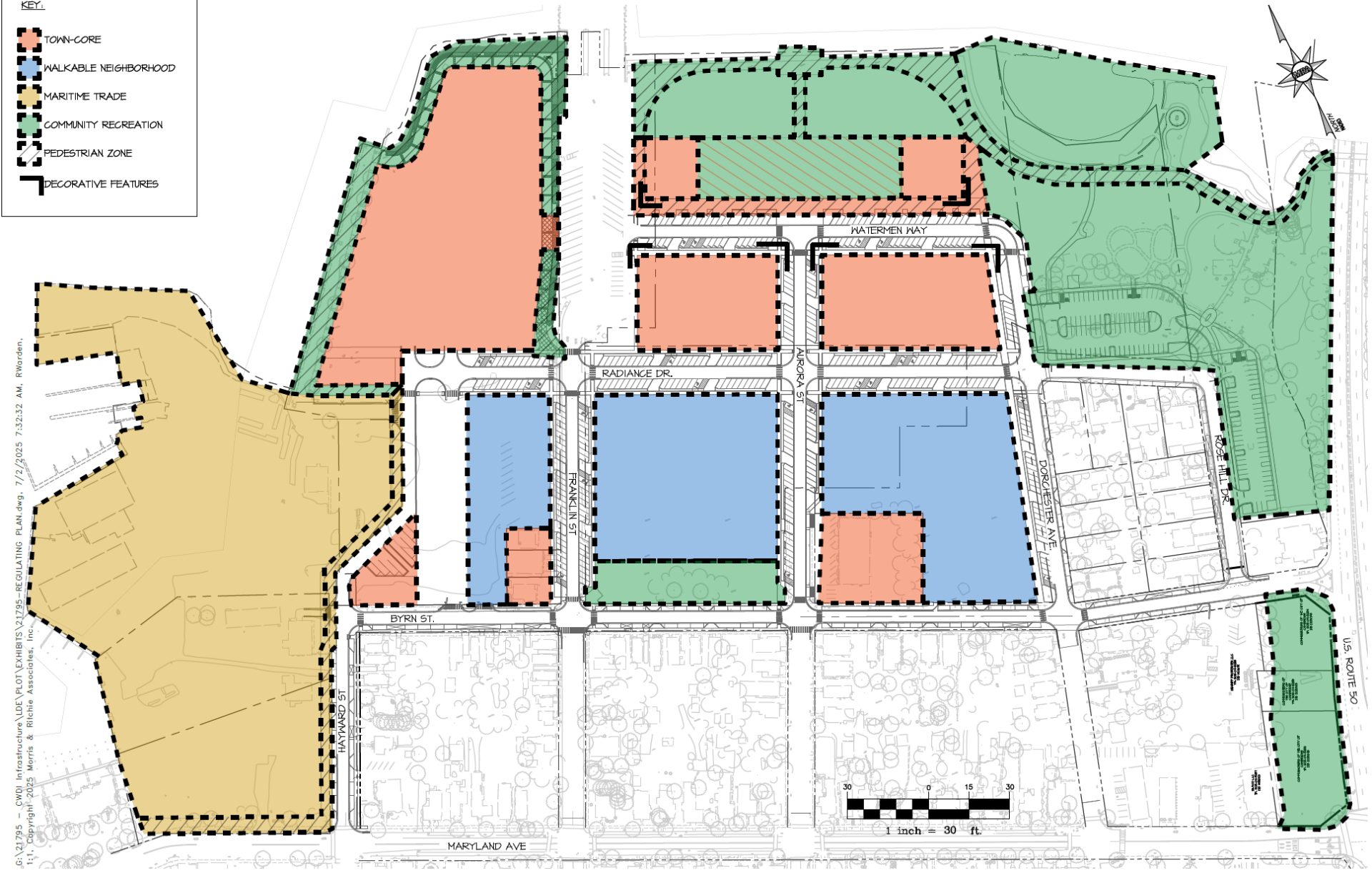
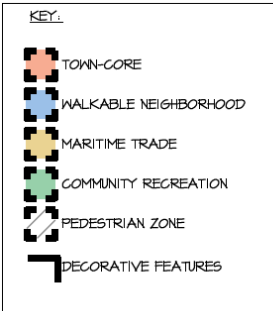
CONTENTS

1	Regulating Plans	04
1.1	Conceptual Map	04
1.2	Proposed Master Plan	05
1.3	Map of Proposed Designated Areas	06
2	Typical Design Features	07
2.1	Fences, Walls, and Structural Landscaping	07
2.2	Manufacturing	09
2.3	Leisure and Recreation	09
2.4	Public Art	10
2.5	Street and Path Lighting	10
2.6	Traffic Calming Street Design	11
2.7	Wayfinding and Signage	11
2.8	Public Space and Design	12
3	Building Types	13
3.1	Auxiliary Dwelling Units	13
3.2	Warehouses	13
3.3	Garage Houses	14
3.4	Mini Houses	14
3.5	Garages	15
3.6	Stacked Homes	15
3.7	Public Spaces	16
3.8	Public Spaces	16
3.9	Commercial Mixed Use	17
3.10	Maritime Workshops	17
3.11	Cafe Structures	18
4	Possible Frontage Deviations	19
4.1	Frontages	19
4.2	Public Spaces	19
4.3	Public Spaces	20
4.4	Public Spaces	20

CONTENTS

5	Town Core (TC) Standards	21
5.1	Description of Designated Area	21
5.2	Permitted Building Types	21
5.3	Allowed Frontage Deviations	21
5.4	Build-to-Line	22
5.5	Setbacks	22
5.6	Building Form	22
5.7	Building Height	22
5.8	Encroachments into Public Way	22
5.9	Parking	22
6	Walkable Neighborhood (WN) Standards	23
6.1	Description of Designated Area	23
6.2	Permitted Building Types	23
6.3	Allowed Frontage Deviations	23
6.4	Build-to-Line	24
6.5	Setbacks	24
6.6	Building Form	24
6.7	Building Height	24
6.8	Encroachments into Public Way	24
6.9	Parking	24
7	Maritime Trade (MT) Standards	25
7.1	Description of Designated Area	25
7.2	Permitted Building Types	25
7.3	Allowed Frontage Deviations	25
7.4	Build-to-Line	26
7.5	Setbacks	26
7.6	Building Form	26
7.7	Building Height	26
7.8	Encroachments into Public Way	26
7.9	Parking	26
8	Community Recreation (CR) Standards	27
8.1	Description of Designated Area	27
8.2	Permitted Building Types	27
8.3	Allowed Frontage Deviations	27
8.4	Build-to-Line	28
8.5	Setbacks	28
8.6	Building Form	28
8.7	Building Height	28
8.8	Encroachments into Public Way	28
8.9	Parking	28

Regulating Plan



U.S. ROUTE 50

Concept Master Plan





Cambridge Waterfront Park



Hotel and Public Boardwalk

Cambridge Harbor Concept Perspective Renderings



Hotel and Parking Plaza



Watermen Way

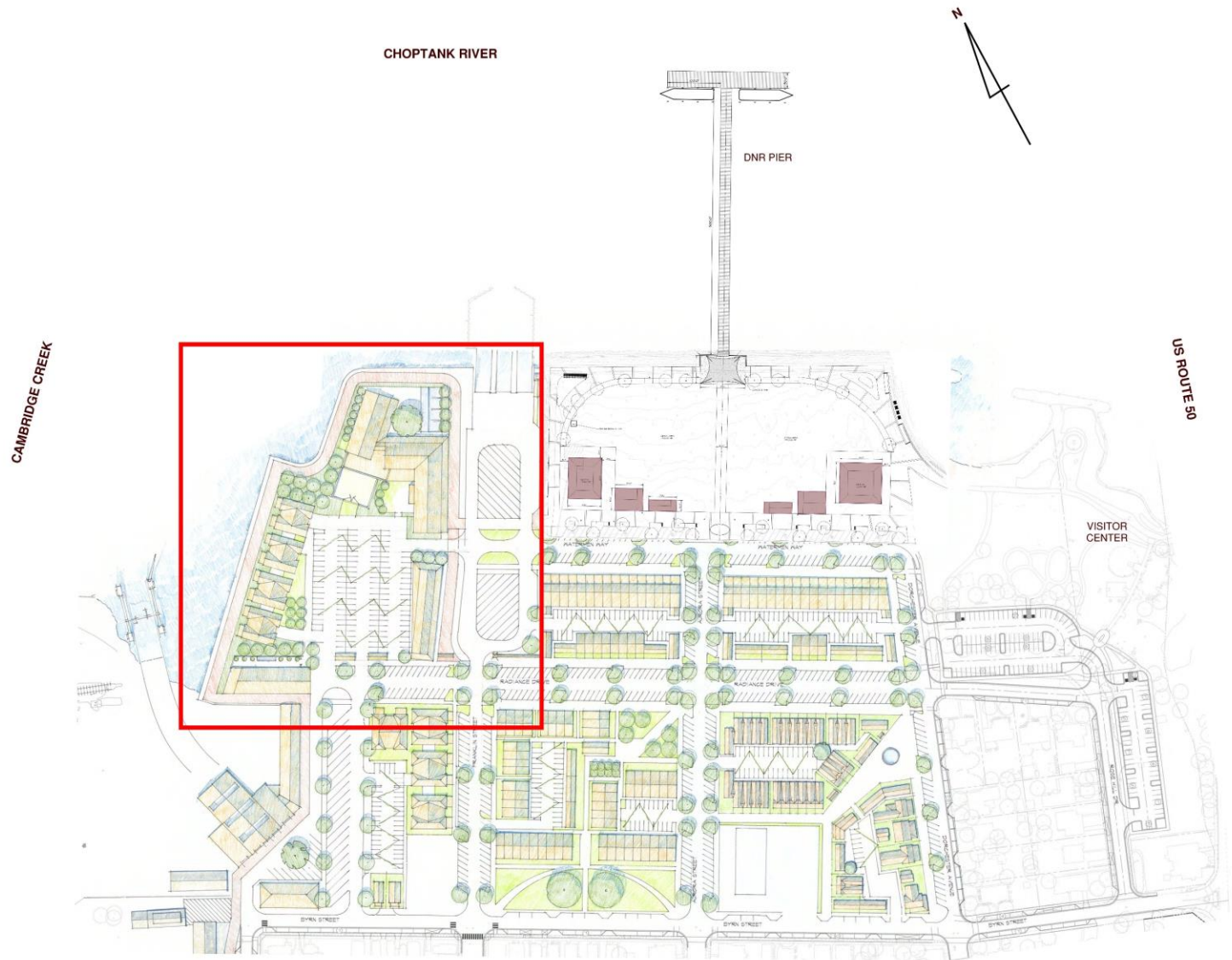


Yacht Maintenance Company and Richardson Maritime Museum

Cambridge Harbor Concept Perspective Renderings Street View



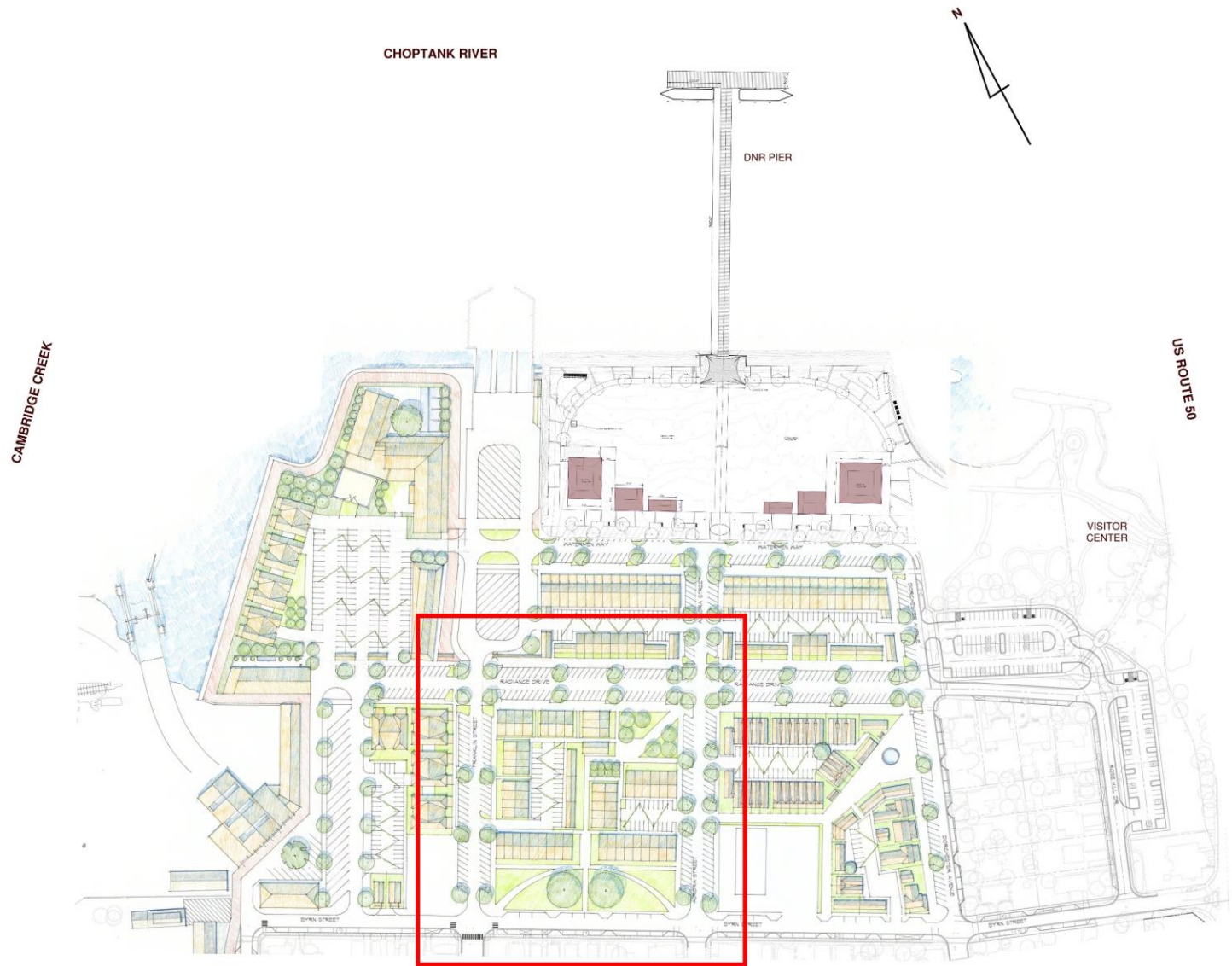
Concept Master Plan



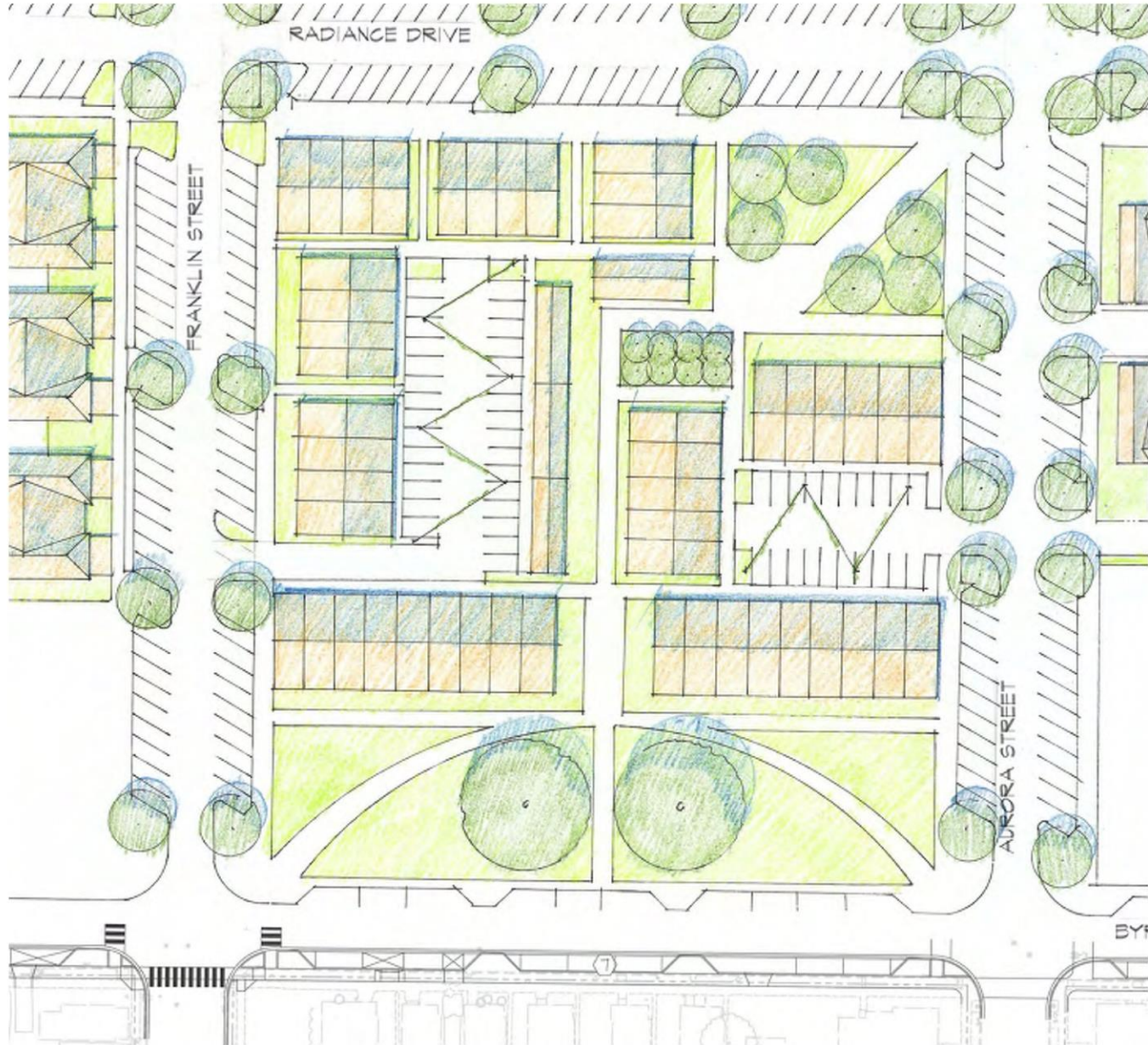
Hotel, Residential & Commercial



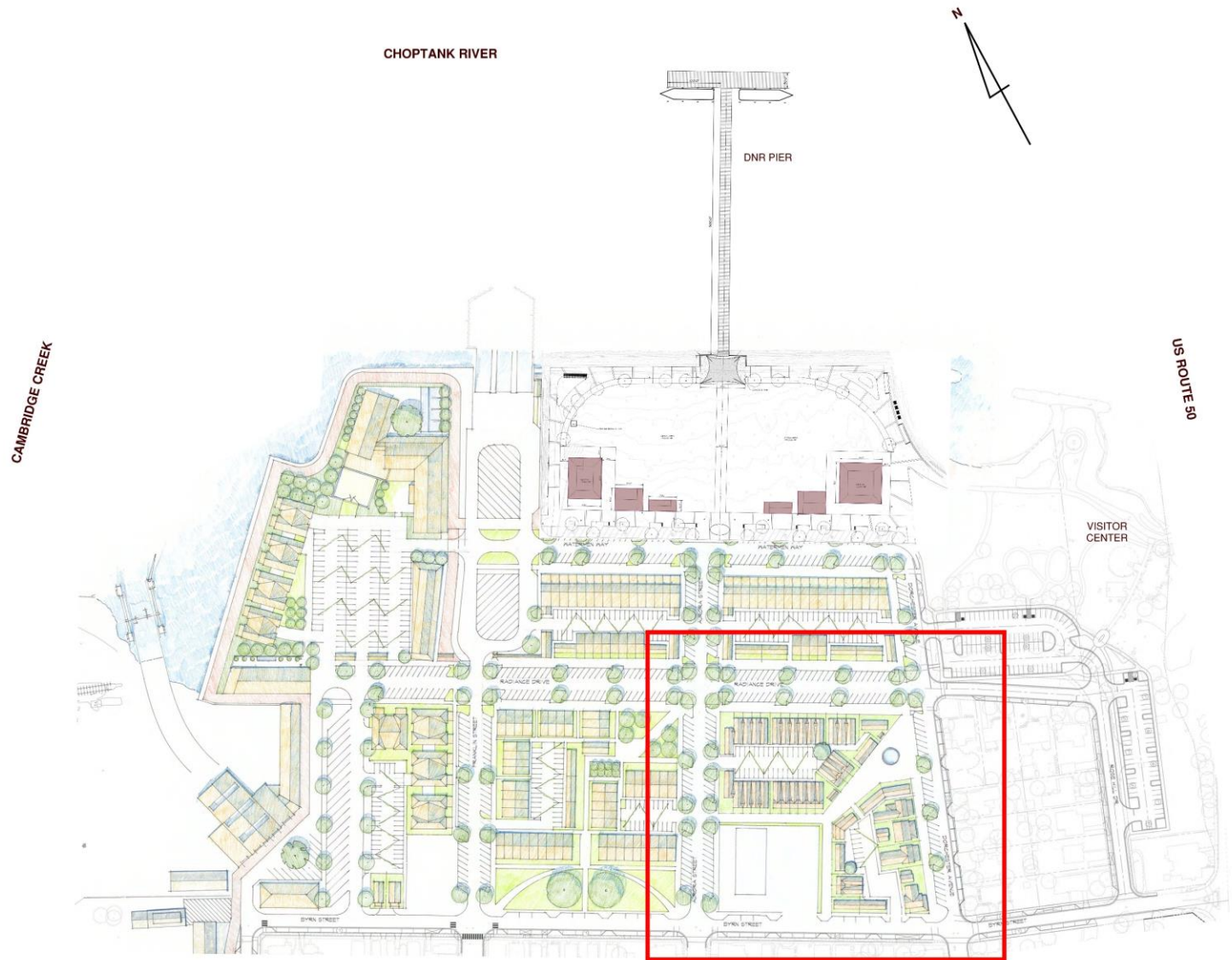
Concept Master Plan



Walkable Neighborhood & Tree Park



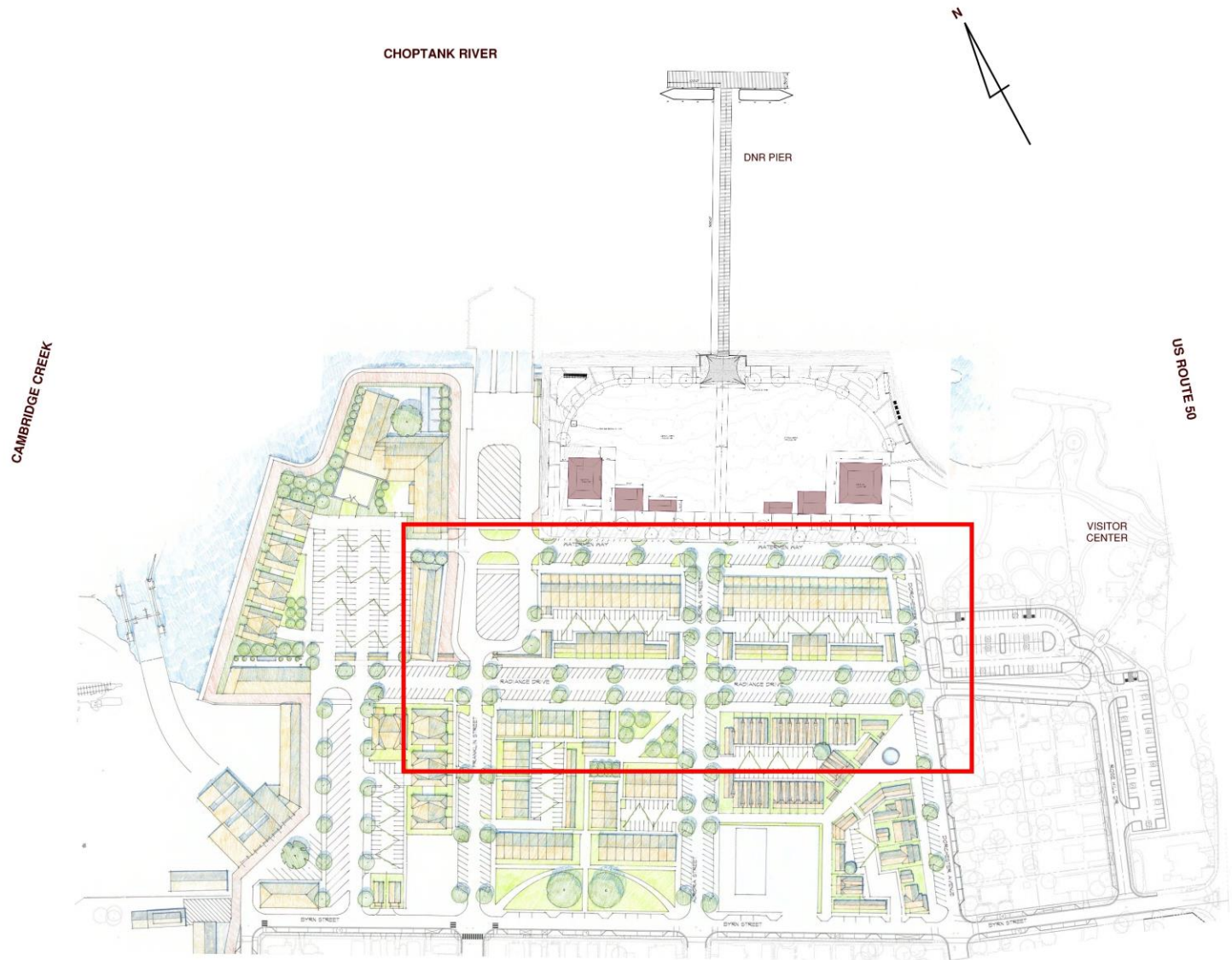
Concept Master Plan



Walkable Neighborhood



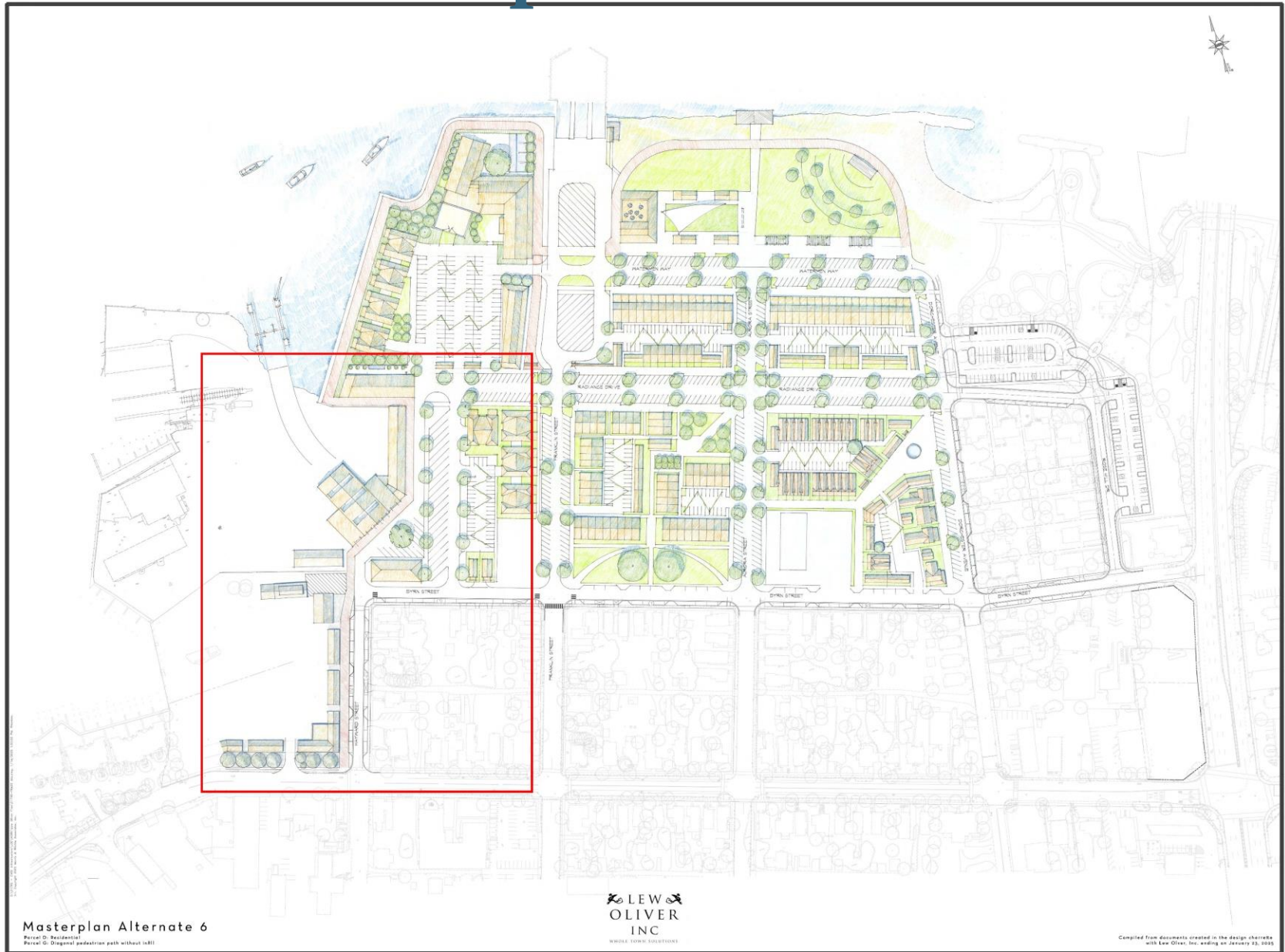
Concept Master Plan



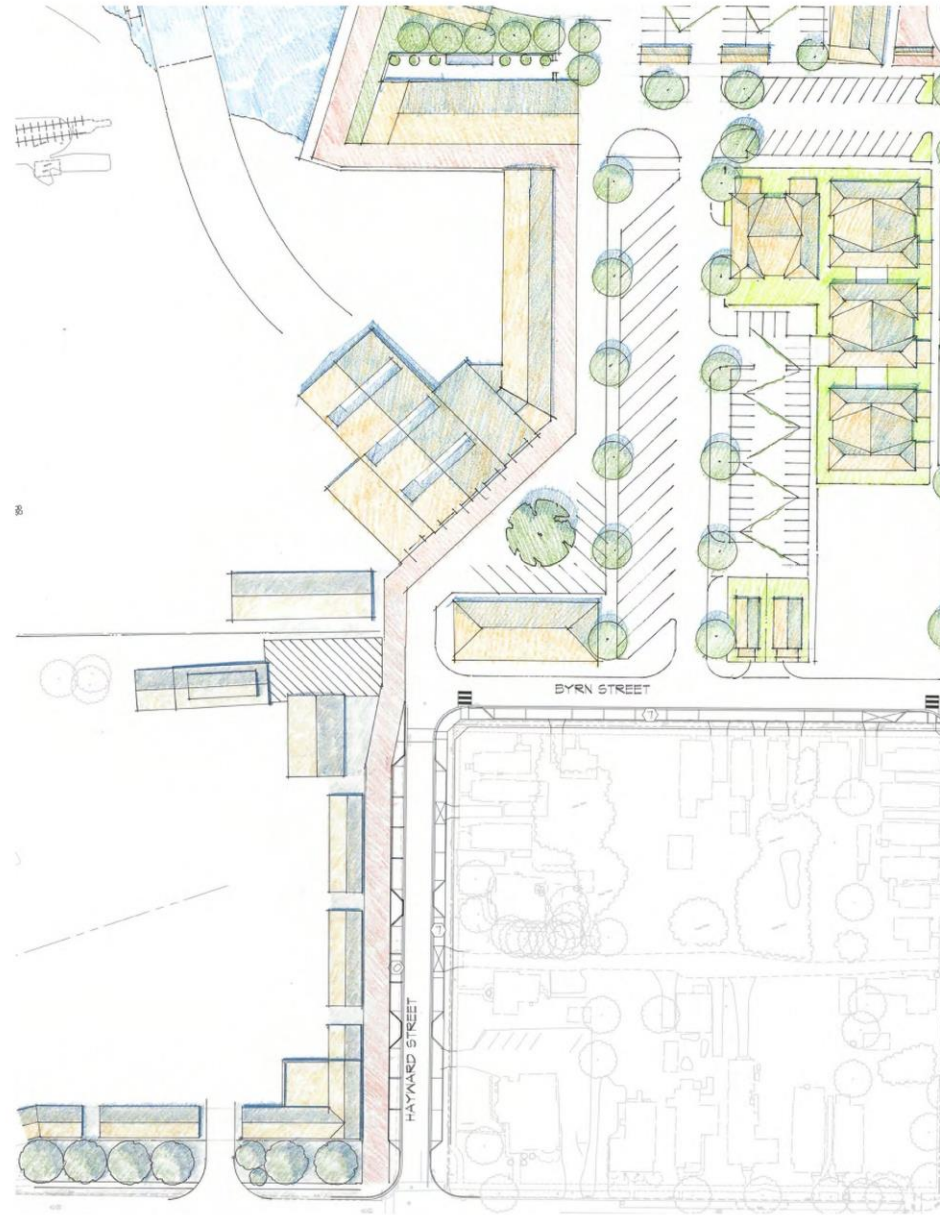
Mixed Used Residential/Commercial



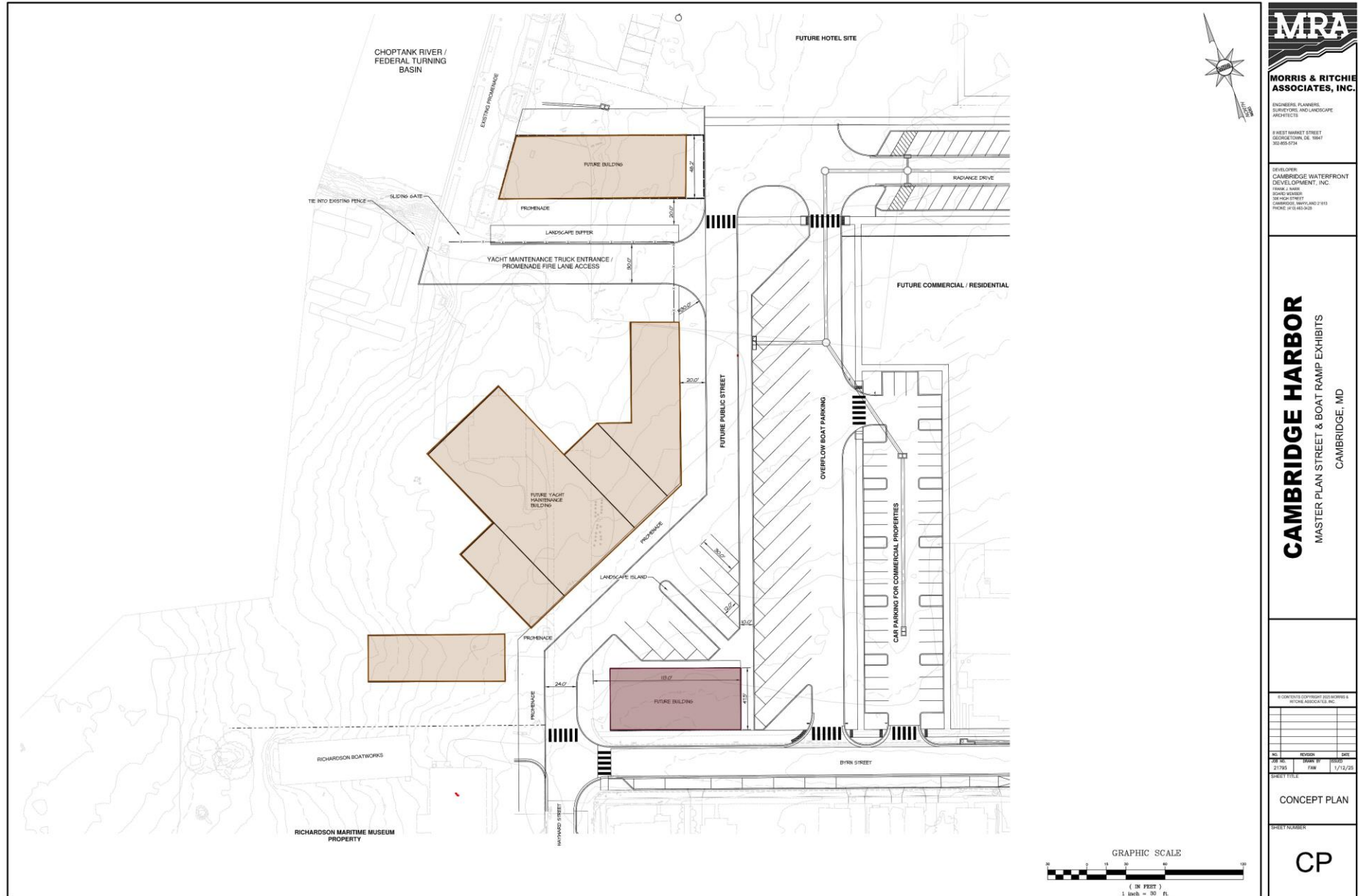
Concept Master Plan



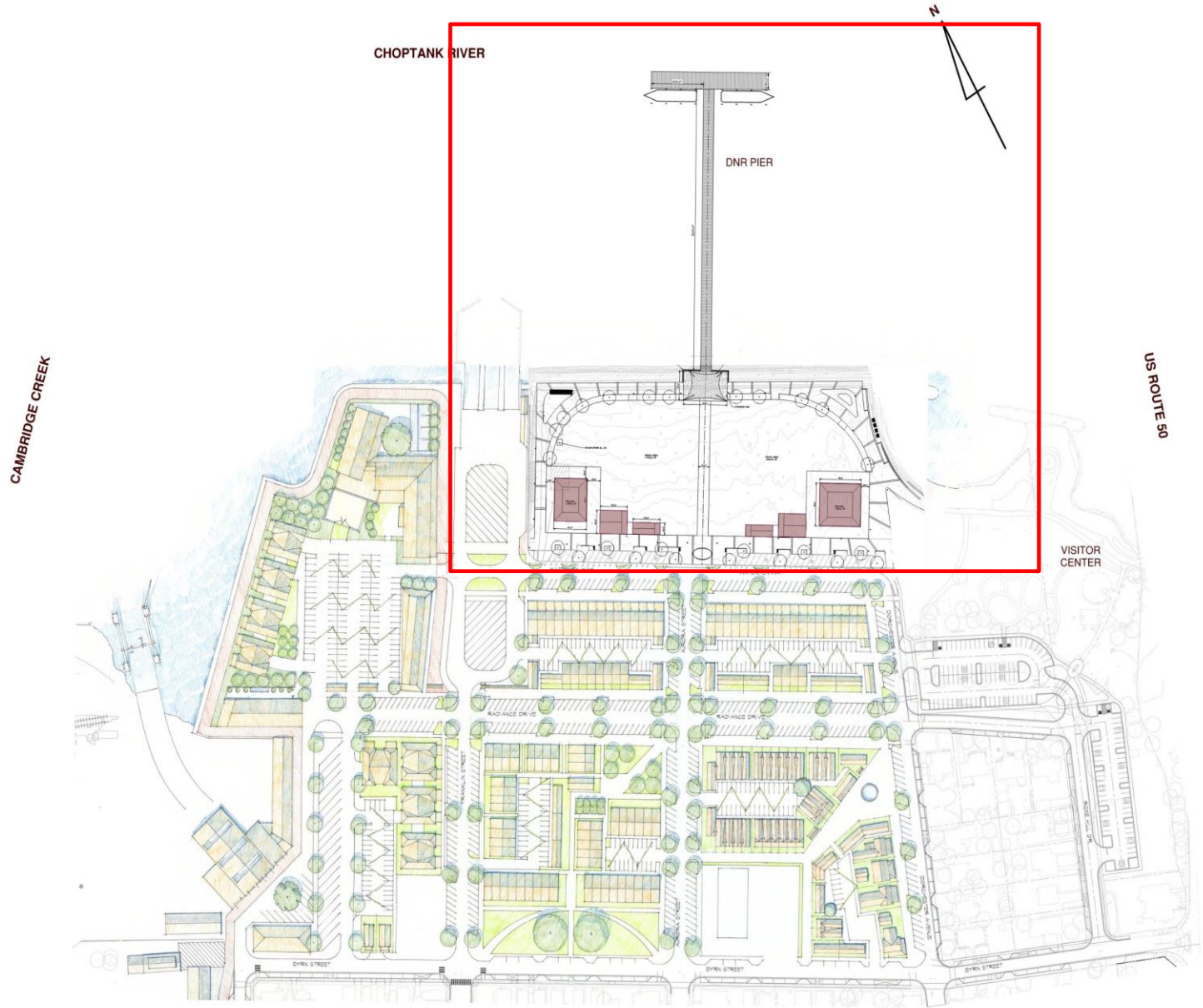
Hayward St – Maritime Way



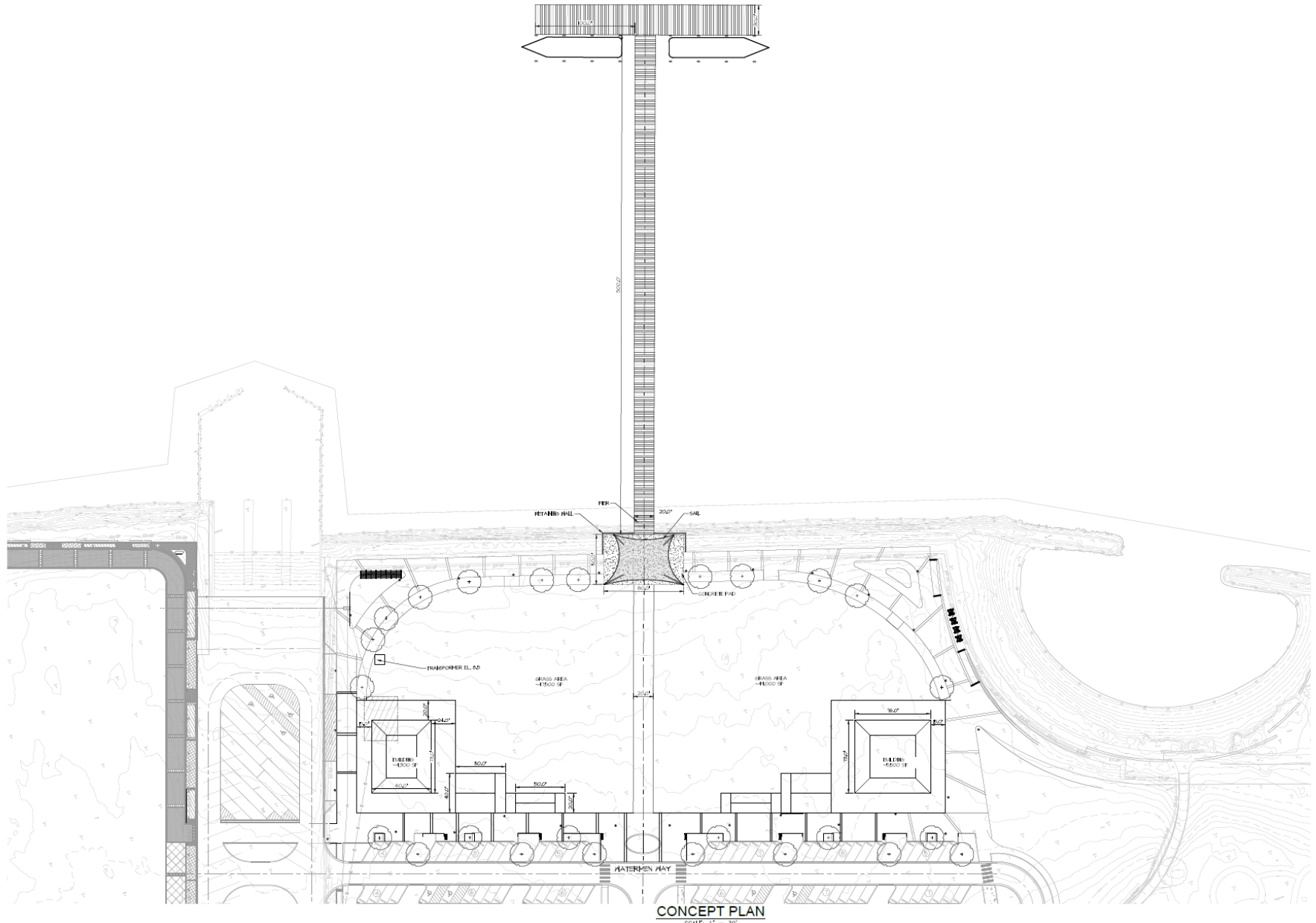
Yacht Maintenance/Maritime Way



Concept Master Plan



G:\2795 - CMC Infrastructure \EPC\PHASE 2\ACT\2795\20 PH2 SITE PLAN.dwg, 5/14/2025 8:34:04 AM, Rework on I-1, Copyright 2025 Harris & Wicks Associates, Inc.



CH



What's Next



August

- Hotel Meeting
- Advertise Chief Administrative Officer Position (CAO)
- Quarterly Partner Meeting

September

- Issue Broker RFP
- Interview CAO Candidates
- Complete Promenade Pathway

October

- Hire CAO
- Interview Broker Candidates
- Design Guidelines & Zoning Approvals

November

- Select Broker
- Complete Promenade Landscaping
- Quarterly Partner Meeting

December

- Finalize Development Offering Memorandum
- Complete Infrastructure Design
- Identify Additional Land Needed by Yacht Maintenance

January

- Offering Memorandum Hits the Streets!
- Receive Preliminary Market Data from Development Community



Scan QR Code to Ask a Question

