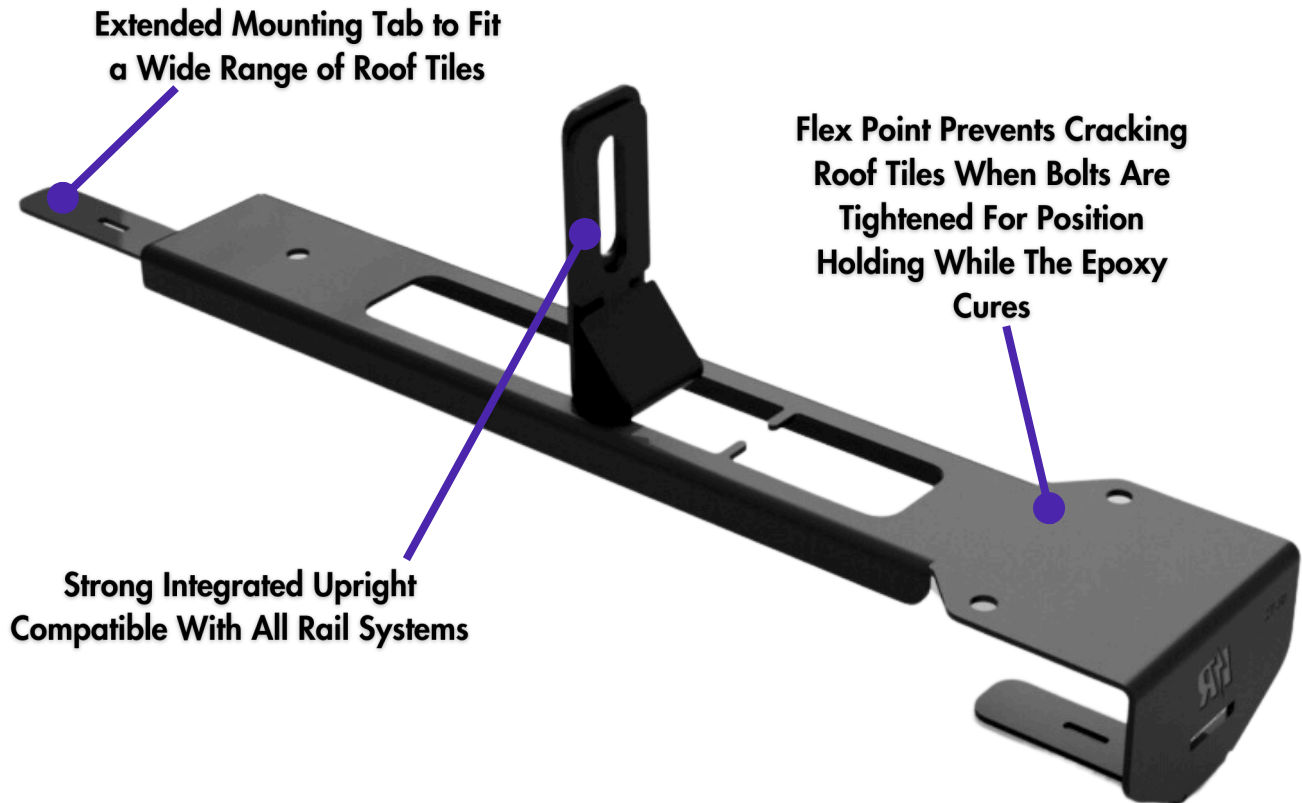


LIGHTNING FAST TILE ROOF INSTALLATION

The IR-T1 TileBallast™ No Penetration Tile Roof Mounting System is revolutionizing the industry with its unique, non-invasive design. This mount uses our own IntegraGel Fast Setting Industrial Strength Epoxy to create a large ballasted foot from the heavy concrete tiles that are nested and overlapping each other, and even increases the structural integrity of the roof.

With extensive outdoor and wind tunnel testing, the IR-T1 is the most highly tested and engineered product on the market and provides peace of mind to the homeowner with no risk of a leak. Each mount is formed from high-strength steel and black zinc plating for superior corrosion resistance. The integrated upright is compatible with all solar module rail racking systems, ensuring quick installations and reducing installer fatigue.



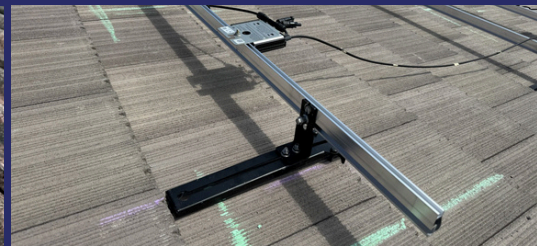
The Most Highly Tested & Engineered Solar Roof Mount In The Industry

The IR-T1 has undergone rigorous testing to evaluate its performance under the most severe wind and snow load conditions, and was tested in the George E. Boeing Aeronautical Wind Tunnel, where it successfully withstood wind speeds exceeding 165 MPH with a safety factor of 3:1.



No Roof Penetration, No Tile Removal

The IR-T1 represents the first and only non-invasive solar roof mount specifically designed for tile roofs. This innovative solution not only streamlines the installation process, making it significantly faster and easier than other options on the market but also assures homeowners who may worry about the risk of a roof leak.



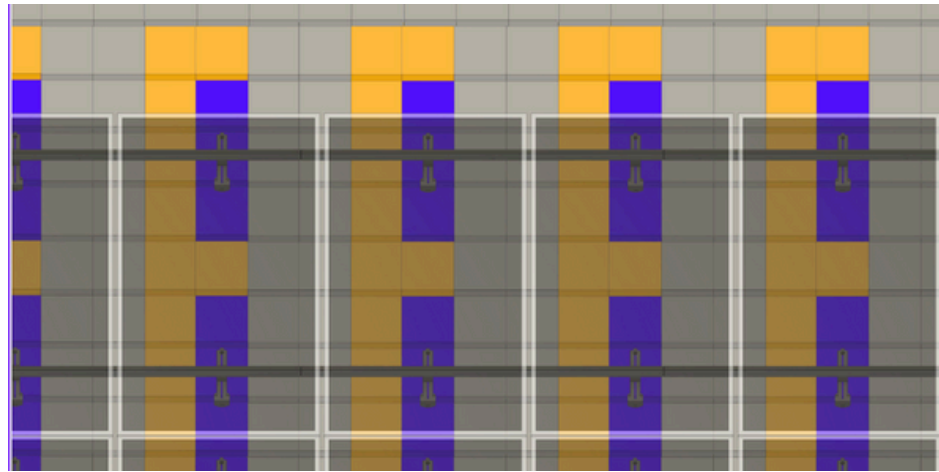
4x Faster Than Traditional Tile Roof Hooks

With no need to remove tiles and penetrate the roof, the IR-T1 is up to 4x faster any other option on the market and jobs can be completed much faster with far less fatigue, all while increasing the structural integrity of the roof with the use of IntegraGel (see back page for more information).

See How The IR-T1 Transforms Standard Roof Tiles Into a Large Nested Ballast Foot!

Legend

- Concrete Adhesive Bonded Tiles
- Nested/Overlapping Tiles



IntegraGel Fast Setting Industrial Strength Epoxy

IntegraGel is an industrial strength two part epoxy that works synergistically with the IR-T1. This unique epoxy is the key to our patent-pending installation method and keeps each mount solidly bonded as an integral part of the tile roof. Each tube of IntegraGel can be used for up to ten roof mounts, includes a mixing nozzle and fits into any standard caulk gun, greatly contributing to the lightning fast install times of the IR-T1 TileBallast™ system.



IntegraRack® backs all of its products with a 25 year limited product warranty. IntegraRack also guarantees that all products are built to withstand the harshest environmental conditions when properly installed.

MORE IR-T1 INFO



VISIT OUR WEBSITE

