

PHOTODIVERSITY™
FILMS LLC



PHOTO COURTESY @COPYRIGHT

ADAPTIVE VISIONS™

PhotoDiversity Education Series Pitch Deck
Produced by The Zoological Lighting Institute for
ZLI's Adaptation Campaign

The Science of
Cetaceans and Light

ADAPTIVE VISIONS™

PhotoDiversity Education Series

Produced by **The Zoological Lighting Institute**
for the **ZLI Adaption Campaign**

ZLI Charitable Mission:

Supporting the Sciences of Light and Life through the Arts
for Animal Welfare and Wildlife Conservation

ZLI Adaptation! Campaign Purpose:

Exploring relationships of light to life within natural environments,
combatting debilitating anti-Asian biases with compassion.



PHOTO @COPYRIGHT © BENNY YUNIARTO

This media production provides a science-driven, fiscally viable, and globally scalable educational resource to enhance community well-being and resilience.

It links science to animal welfare and wildlife conservation, without apology for the complexity of the subject matter.

(NHK / PBS / streaming-compatible)

PhotoDiversity Education projects inform **ZLI Campaign Media Suites**, bringing science to diverse audiences for maximum engagement and impact.

ZLI's Adaptation Media Suite:

INHUMANITIES ANIME:

THE AFTERLIFE OF WHALES™

KUYŌ SHŌKON CINEMA

WHALEFALL™

PHOTODIVERSITY EDUCATION:

ADAPTATIVE VISIONS™

PHOLKTALES:

SHONTAKU™ (Adapting The Book of Jonah)

CHIBIKAMA:

TILLY'S WORLD™ (cruelty free haute couture)



FORMAT

SERIALIZED EDUCATIONAL SHORTS:

33 episodes (15 min each)

Live Action, In-situ + Studio/Lab Settings

EACH EPISODE:

Anchored by a specific cetacean species (whales, dolphins, porpoises)

Narrated by *The Afterlife of Whales* anime voice talent

INTEGRATES:

Pure Science

Veterinary Care

Conservation Impact

The Zoological Lighting Institute recognizes LIGHT as *the* core physical factor in biological viability and well-being.

Adaptive Visions recognizes the differences in cetacean photobiology, despite the similarities which allow for uniform classification as cetaceans.

Adaptive Visions elevates 'Asian' contributions to the field, in an overt attempt to combat the anti-Asian hate that galvanizes around whales, dolphins, and porpoises.

THE ZLI DIFFERENCE

ZLI Framework:

This organizational system articulates the complex relationships of light to life simply and clearly, improving educational outcomes and application.

In brief, the ZLI Framework explores how light affects living bodies, structures mental relationships, while driving ecological systems.

This structure improves efficiency in not only understanding, but fund distribution in awarded grants, and educational outcomes.

Light and the Five Domains:

As light is central to biological viability and well-being, the practical Light and the Five Domains approach informs better decision-making in animal care and wildlife conservation, while opening conversations that foster multi-cultural participation.

The LFD Method considers mental function, nutrition, health (sexual, developmental, epidemiological), behavior, and environmental construction in terms of the capacity of living organisms to function fully. The understanding that this develops prevents misguided anthropomorphism from inducing harm rather than aid.





Bottlenose Dolphin

Sato's Beaked Whale

Sei Whale

Striped Dolphin

Dwarf Sperm Whale

Cuvier's Beaked Whale



Bryde's Whale



Humpback Whale



Spinner Dolphin



Amoux's Beaked Whale



Hector's Dolphin



False Killer Whale



North Atlantic Right Whale



Risso's Dolphin



Amazon River Dolphin



Tucuxi



Bowhead Whale



Pantropical Spotted Dolphin



Beluga



Orca (1) Ecotype - Bigg's



Sperm Whale



Pilot Whale Long Finned



Blue Whale



Narwhal



Baiji - Yangtze River Dolphin



Chinese White Dolphin



Vaquita



Gervais's Beaked Whale



Short-Beaked Common Dolphin



Southern Right Whale



Orca (2) Ecotype - Subantarctic



Indian Ocean Humpback Dolphin



Irrawaddy Dolphin



Ganges River Dolphin



Pygmy Sperm Whale



Yangtze Finless Porpoise

EDUCATIONAL CONTENT

Every Episode of **THE AFTERLIFE OF WHALES™** features a particular cetacean integrated into the story-telling, linked to an **Adaptations™** live action educational series episode.

This grounds the story in real world contexts, highlighting the importance of whales, dolphins, and porpoises that Aya and Miki encounter. It also gives **The Afterlife of Whales™** added educational value, serving the mission of **The Zoological Lighting Institute (501 c(3))**.

Adaptations™ episodes sync with **The Afterlife of Whales™** but will be distributed separately as a stand-alone educational series to foster photobiological understanding, leading to more effective conservation and welfare initiatives.

CASTING

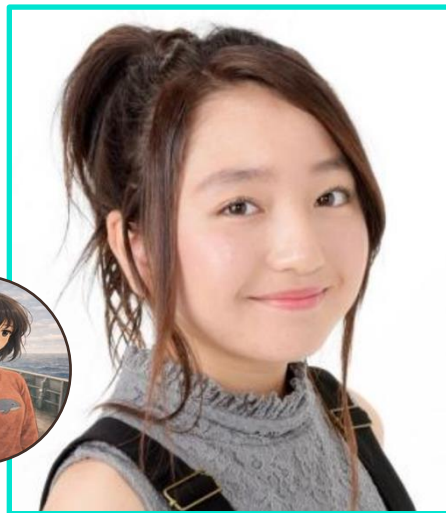
VOICE TALENT

OKIJIMA AYA

- **EMERGING AINU / Hokkaido-based talent**

or

- **KANON TANI**
- Rina Takeda



JORGE NAKAMURA

- **WAGNER MOURA**
- Kento Yamazaki
- Masaki Okada



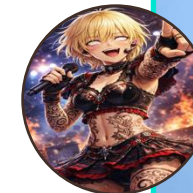
OKIJIMA MIKI

- **TAO OKAMOTO**
- Nana Komatsu
- Fumi Nikaido



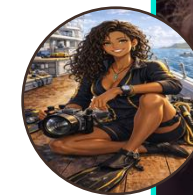
OKIJIMA ERIKO

- **AINA THE END**
- Suzuka Nakamoto
- Atarashii Gakko!



TILLY LILLY

- **TINA KUNAKEY**
- Zendaya
- Maria Borges



FINANCIAL OPPORTUNITIES

Entertainment Revenue Supporting Global Conservation

ADAPTATIVE VISIONS is designed as a premium educational co-production, developed charitably and then moved to for-profit commercial production combining commercial distribution with mission-driven partnerships that support environmental initiatives.

Production Model

- Premium wildlife series designed for global streaming platforms
- International co-production structure (Japan / North America / Europe)
- Science-rich education supporting larger media franchise

Revenue Opportunities

- Global streaming licensing
- International distribution and broadcast rights
- Merchandise and fan culture participation
- Educational and environmental partnerships

Mission Alignment

Revenue generated by the series supports conservation connected to **ZLI's Adaptation Campaign** and **ZLI's Little Birds Initiative**.

Participate in **ADAPTIVE VISIONS!**

Three ways to join the project

INVESTMENT

Co-production and equity participation opportunities

SPONSORSHIP

Brand partnerships aligned with animal welfare and ecojustice
Series • Seasonal • Episodic

DONATION

Charitable supporters of **Save a Billion Birds!** are eligible for US based tax deductions.

INVESTMENT OPPORTUNITIES

Class B vs Class V Comparison



ADAPTIVE VISIONS™ offers two types of impact investment shares, addressing different investor financial needs. Class B offers straightforward profit-sharing, while Class V adds a CSR generating donation component and perks.

Feature	Class B	Class V
Price Point	\$75,000 Invested / Share	\$75,000 Invested + \$75,000 Donated
Investment participation	✓	✓
Waterfall participation	✓	✓
Capital return timing	Standard	Early timing preference
Profit share	Equal	Equal
Production access	Limited	Priority
Premiere invitations	Limited	VIP
Cultural recognition	No	Yes
Future investment priority	No	Yes
Donation tax deduction	No	Yes

INVESTOR TIERS:

Spectrum	Violet	Indigo	Blue	Green	Yellow	Orange	Red
200+ Shares	$199 \leq x \leq 100$ Shares	$99 \leq x \leq 50$ Shares	$49 \leq x \leq 20$ Shares	$19 \leq x \leq 10$ Shares	$9 \leq x \leq 2$ Shares	1 Share	<1 (joint Purchase)

REVENUE POTENTIAL

Charitable Purpose, Financial Returns



PHOTODIVERSITY[™]
FILMS^{LLC}

WATERFALL CONSCIOUS FIRST YEAR EARNINGS SUPPORT RESPONSIBLE BUSINESSES AND COMMUNITY GOOD ALIKE!

After charitable development by **The Zoological Lighting Institute**, **PhotoDiversity Films** procurement makes investment possible.

ESTIMATED three season INVESTOR ROI

ASSUMING \$68,000,000 NET PROFIT
(Median Expectation)

Total Budget = \$18,000,000

First Year Distribution Net Profit = \$68,000,000

- \$8.0 M IP Acquisition/Licensing Fee
(ZLI Content)
- First payout to Investors (120%) = \$21,600,000
- Producer Catch-Up = \$7,00,000
- Remaining Money to be Split = \$31.400,000

\$ 8.6 M Class A /

\$ 25.12 M Class V+B

(FIRST INVESTOR PAYOUT + SPLIT) =

\$46.72 M

ADAPTIVE VISIONS Investor Potential

Investment Structure

- Total investor shares: 240
- Investment per share: \$75,000
- Total investor capital: \$18M
- Net profit estimate (average): \$68M

Waterfall Distribution Result

- Investors receive full capital return first
- Producer catch-up applied
- Remaining profit split 80% investors / 20% producer

Investor Outcome

Investor Value Proposition

- Capital returned first
- Profit participation after catch-up
- Participation in global franchise growth

Investment converts \$75,000 into approximately \$195,000 per share upon average project success.

Class B and V yield identical profit-generating results, but class V adds non-profit tax implications. Consult a licensed tax professional for individual circumstances.

METRIC	RESULT
Investor preferred payout	\$21.6M
Investor profit share	\$25.12M
Total investor payout	\$46.72M
Return per share	~\$195K
Profit per share	~\$120K
Investment multiple	~2.6x

CLASS B EFFECTIVE ECONOMICS

Item	Amount
Investment	\$75,000
Cash returned	~\$194,667
Investment profit	~\$119,667

CLASS V EFFECTIVE ECONOMICS

Item	Amount
Total cash paid	\$150,000
Tax savings	~\$27,750
Effective cost	\$122,250
Cash returned	~\$194,667
Net gain	~\$72,417

UNDERWRITING

Sponsorship with CSR Value



'Underwritten by' Sponsorships are Available for Purchase

UNDERWRITING SPONSORSHIP

for **ADAPTIVE VISIONS™** includes

Series, Seasonal, Episodic, and Product Placement opportunities. Though as a purchase these are not tax deductible, these place brands in highly prominent spots in the show, for all time.

PRODUCT PLACEMENTS for co-branded merchandise (1-5% Product Line Revenue upon Agreement) are also available. Selected sponsors may choose to have products featured as prop elements within scenes. These are 'quiet' inclusions, placed without being called out. Inclusion is competitive, subject to Director Approval.

SERIES

\$12,000,000

One Available

Series Sponsor Logo will precede opening credits, announcing every episode in perpetuity.

Series Sponsor granted licensing rights and 'presented by' credit.

SEASONAL

\$4,000,000

Three Available

Season Sponsor Logos introduces after credits, closing each seasonal episode but preceding next episode preview.

Seasonal Sponsors gain limited licensing rights for one season (e.g., tech, apparel).

EPIODIC

\$750,000

Thirty-three Available

Episode Sponsor Logos included on three in-show scientific content scene breaks.

Episode Sponsors gain limited rights to co-promote / screen that episode.

ADAPTATIVE VISIONS™ offers different kinds of sponsorships for its series and movie productions. Following traditional anime scene card entries, these create life of in-show partnerships for lasting value.

DONATIONS

ADAPTATION Charitable Development and ZLI's Little Birds Initiative



Converts illiquid and unprofitable real estate into tax refunds while advancing bird conservation for communities.

AUDIENCE PARTICIPATION

- Viewers learn about cetaceans (science and cultural impact) throughout the series
- Fans participate in global awareness campaigns, such as biking for birds and birding tours
- Communities may choose to implement bird-friendly design to create funding streams

TURNING EDUCATION INTO IMPACTFUL REAL-WORLD CONSERVATION

Sponsored by ZLI's Adaptation Campaign, [Adaptive Visions](#) connects audiences to unique donation strategies that earn significant tax refunds whilst protecting the animals they love.

ZLI'S LITTLE BIRDS INITIATIVE DONATION STRATEGY

Donors may choose to participate in **ZLI's Little Birds Initiative** in lieu of outright cash donations. This initiative converts financially unproductive and illiquid building facades into tax refunds, while ensuring that buildings and development are wildlife-friendly. Donor tiers reflect participating building FMV, resulting in tax refunds AND charitable development in support of ZLI's Adaptation Campaign and the Adaptive Visions™ Series.

DONOR TIERS:

Spectrum	Violet	Indigo	Blue	Green	Yellow	Orange	Red
\$50 M+	\$10 M+	\$5 M+	\$2.5M +	\$1 M +	\$500 K +	\$100K +	\$75 K +

THANK YOU!

James Karl Fischer, PhD

Executive Director, ZLI

james@zoolighting.org

85 Broad Street, 17th Floor

New York, NY 10004

Direct line: +01-973-979-1984

tel. (New York): +01-212-317-2927

tel. (Los Angeles): +01-213-320-2020

e-mail: admin@zoolighting.org

THE ZOOLOGICAL LIGHTING INSTITUTE

is dedicated to supporting science through the arts
for animal welfare and wildlife conservation.

See www.zoolighting.org for more information.