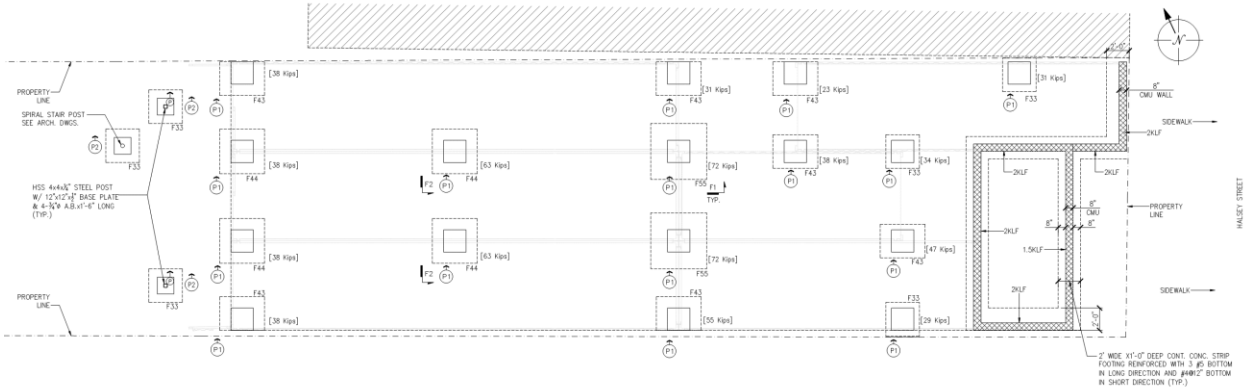


(Courtesy of C+C Architecture)

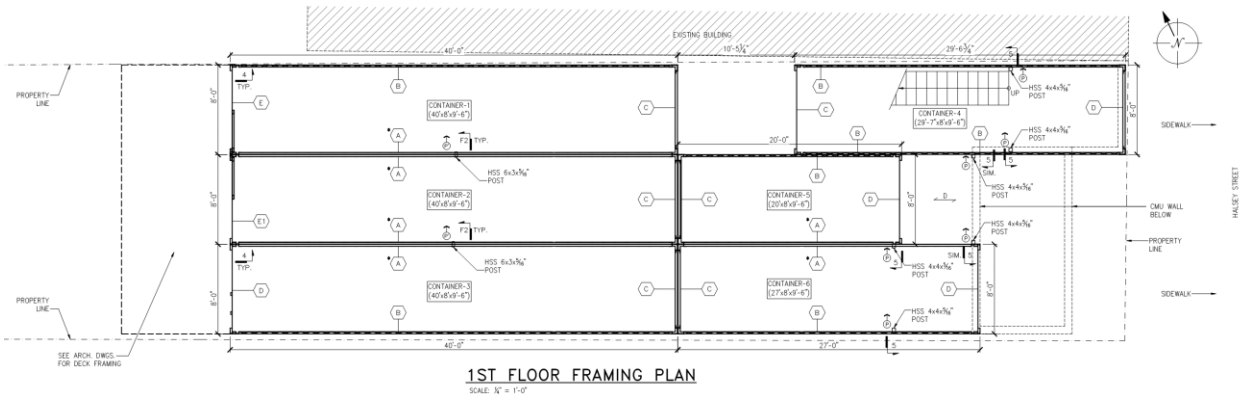
CONTAINER HOUSE, Newark, NJ

Active Design Group collaborated on a prototype structure of recycled steel shipping containers with C + C Architecture. The building is a three (3) story 3 family residential development located at 393 Halsey Street, Newark. Gross area is 2,888 square feet above grade. Each unit occupies each floor with 9'-0" ceiling. Total 18 containers were used in various length but same width and height; 10 containers (40' x 8' x 9'-6"), 4 containers (20' x 8' x 9'-6"), 4 containers (27' x 8' x 9'-6"). All containers are founded on concrete piers. Pitched roof was added to control rainwater and mounting surface was provided for future solar panels. All containers are painted.

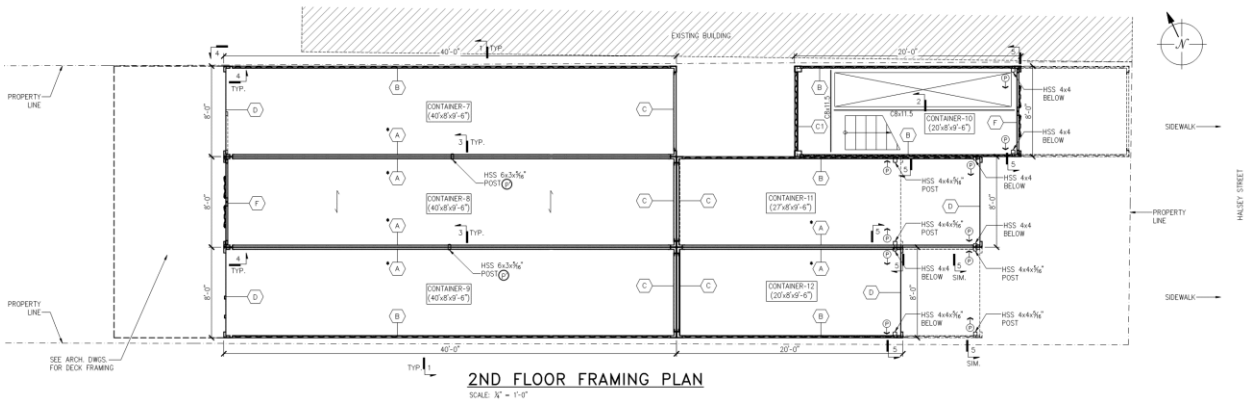
Overall construction cost is estimated 10 ~ 15 % lower than traditional construction.



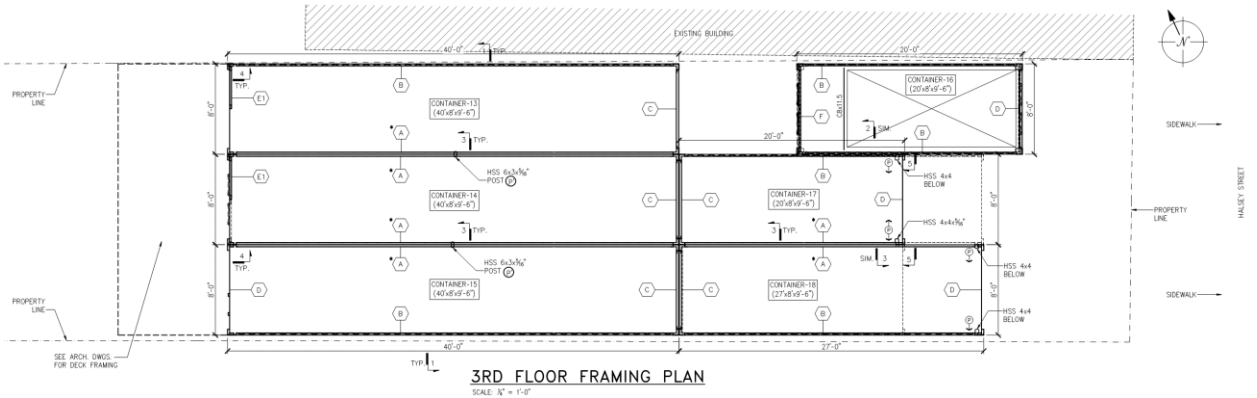
Foundation Plan



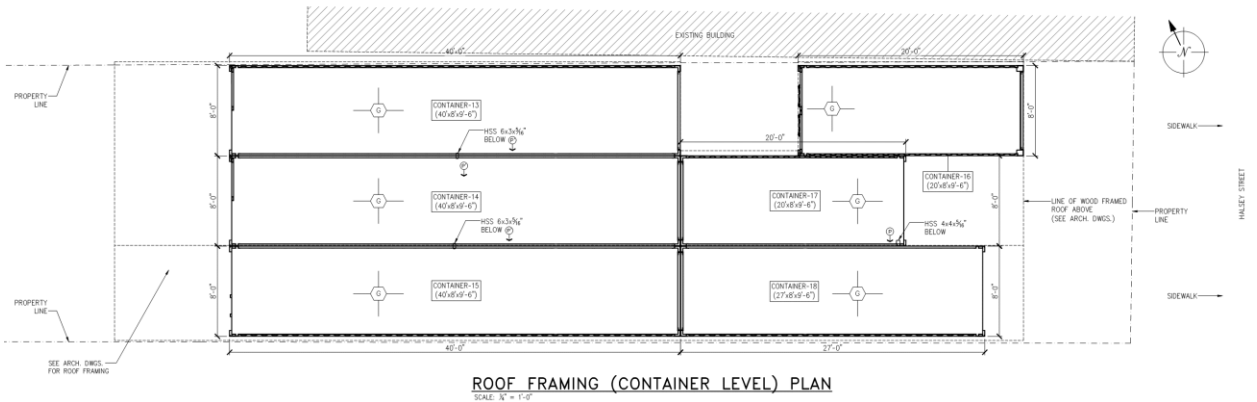
1st Floor Plan



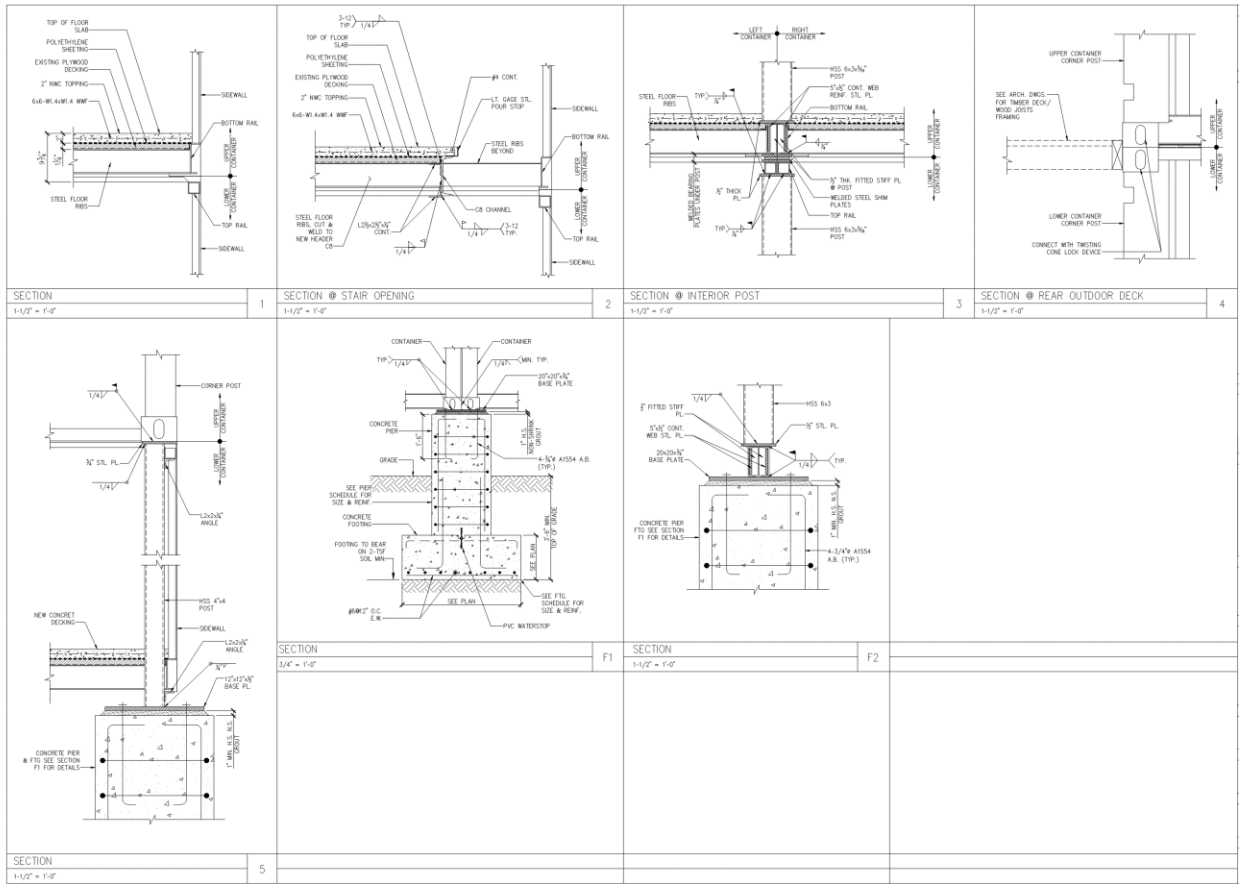
2nd Floor plan



3rd Floor Plan



Roof Plan



Sections and Details