



PRODUCT CATALOG

2025

info@patriotetchworks.com
713-449-2707
<https://PatriotEtchworks.com>
1266 Black River Ct
Whitewater Wisconsin 53190



CONTENTS

01	CUSTOM HATS Introduction	05	CUSTOM APPAREL Shirts that speak volumes because branding doesn't stop at hats.
02	RICHARDSON112 Full customization	06	CUSTOM MERCH Everything tastes better with your logo on it.
03	CUSTOMIZATIONS Your hat, your rules because boring isn't in our vocabulary.	07	RTIC OUTDOORS Every drink needs a tumbler
04	OTTO BEANIES Keeping your self warm in chilly times	08	BACK COVER This section just looks better with 8 things instead of 7.



RICHARDSON 112

The anatomy of a legend

Consistency is the 112's secret, and indeed what has made it America's Favorite Cap. For 19 years, a consistent approach to shape, fit, construction, and materials all hallmarks of Richardson quality has made new fans of the 112 with every purchase and kept the old fans coming back.



02

THE

112

America's
FAVORITE CAP

The Richardson 112 Mesh Snapback is the go-to choice for a reason—classic style, unbeatable comfort, and a fit that works for everyone.

With a wide range of colors and styles to choose from, it's easy to find options that align perfectly with your brand's look and feel. To get exactly what you want, when you want it, we recommend selecting a few favorite colors early. Some of our most popular shades sell out fast and may be backordered for months due to high demand.

NEW COLORWAYS Solid and Combination ARRIVING EARLY 2025



ALL COLORWAYS Solid, Split, Tri, and Alternate



[Y] = Available in YTH size, [S] = Available in SM size, [LG-XL] = Available in LG-XL size.



RICHARDSON 112

DESCRIPTION

The Richardson 112 is the gold standard in hats, trusted by businesses, brands, and enthusiasts for its unmatched quality, comfort, and timeless design. With its structured crown, breathable mesh back, and adjustable snapback fit, this hat offers the perfect blend of style and function. Its versatility makes it ideal for customization, providing a premium canvas for leather patches, logos, and branding.



Fit & Shape

Crafted in our most popular structured profile, the 112's Mid Pro shape is inspired by classic baseball headwear. Not to high, not to low, just right



Construction

With 5 and 6 Panel options and premium finish details across the family of models,the 112 delivers Richardson quality in every stitch



Materials

With a variety of premium materials, finishes and prints. All combined with our signature Trucker Mesh, ensures there's a 112 model that's perfect for you!



PATRIOT ETCHWORKS CUSTOMIZATIONS



01 LEATHER PATCHES

Our top-grain leather panels are crafted from premium-quality leather sourced from American cattle, ensuring unmatched durability



02 ACRYLIC PATCHES

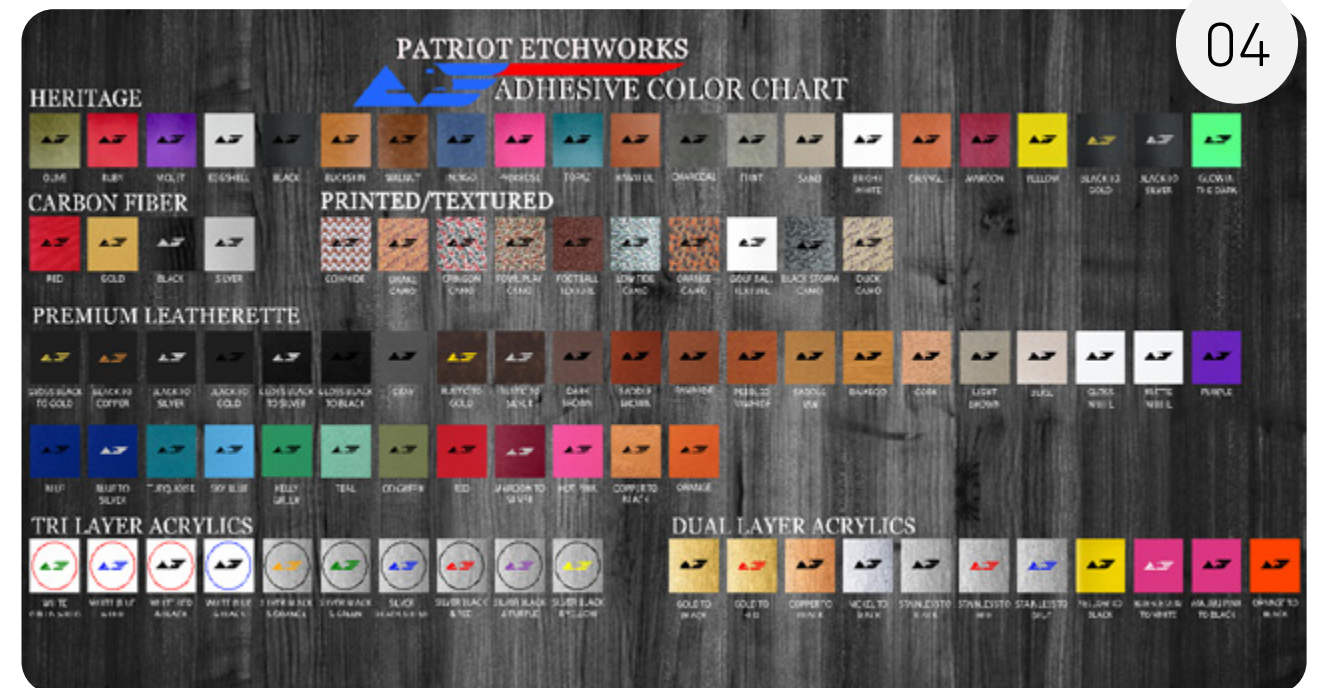
Acrylic patches offer a vibrant, durable option for detailed designs, combining bold colors with a modern, professional look.



03 CUSTOM HAT CLIP

Add a distinctive touch to your hats with custom laser-engraved hat clips, perfect for QR codes, logos, dates, or any personalized design.

At Patriot Etchworks, customization is at the core of everything we do. From precision laser-engraved drinkware to detailed promotional items, we craft pieces that reflect your brand's identity with professionalism and pride. Choose from a wide variety of product styles, materials, and finishes to create items that truly stand out. Whether you're representing a business, a team, or a mission, our custom engraving solutions help you make a bold, lasting impression with quality you can trust.



04

CUSTOM COLOR OPTIONS

Customize your look with leatherette patches in a variety of bold color options designed to match your brand and stand out.



05

CUSTOM PATCH SHAPES

Stand out with custom patch shapes tailored to your design, offering endless possibilities to create unique and eye-catching styles.

Stay warm and on-brand with custom beanies featuring your company logo. Designed for comfort, style, and durability, these high-quality beanies make the perfect gift for employees, clients, or promotional giveaways. Available in a variety of colors and materials, they offer a cozy fit and all-day wear, while keeping your logo front and center.

AVAILABLE ACRYLIC KNIT BEANIE COLORS



NAVY



BLACK



DARK GREEN



NEON YELLOW



NEON ORANGE



GOLD

AVAILABLE COTTON BLEND BEANIE COLORS



NAVY



BLACK



RED



DARK GREEN



WHITE



GREY



Cozy Custom Beanies

Ideal Promotional Cold Weather Gear

We offer a wide selection of blank beanies perfect for

- Acrylic Patches
- Leather patches
- Other customization techniques

Beanies provide warm coverage during cold months which means they get worn frequently. Your branding will be visible each time the hat is used. Beanies easily tuck into bags and pockets making them accessible and convenient gear.

Beanies come in versatile colors like black, gray, navy, burgundy, olive, and tweed that coordinate with winter outerwear.

Perfect For Promoting

Winter Events, Resorts, and Activities

Coffee Shops and Cafes



*MORE COLORS AND STYLES ONLINE . CONTACT US FOR UP TO DATE STYLES AND COLOR OPTIONS

04



CUSTOM APPAREL

Expand your branding with our premium custom apparel.

- **Hoodies**
- **Crew necks**
- **T-shirts**
- **Polos**

Designed for comfort and style, our apparel options are fully customizable with your logo, slogan, or unique design.

Whether you need casual wear for your team or professional polos for corporate events, we offer high-quality materials and expert printing or embroidery for a polished, long-lasting finish.

With a variety of styles, colors, and sizes to choose from,

Our custom apparel ensures your brand looks its best in any setting.



CUSTOM T-SHIRT

Comfortable and versatile, our custom Gildan 5000 t-shirts are perfect for showcasing your brand with high-quality prints that last. Featuring 100% cotton t-shirts from Next Level and Bella and Canvas

*UNLIMITED COLORS, DOUBLE SIDED, SLEEVES
ADDITIONAL COST



CUSTOM HOODIE

Gildan 18500 Hoodie: The Heavy Blend collection is now made with finer yarns and new MVS Air spinning technology, that improves the fabric by reducing pilling, enhancing durability and creating a smoother printing

*UNLIMITED COLORS, DOUBLE SIDED, SLEEVES
ADDITIONAL COST



CUSTOM CREWNECK

The Gildan 18000 sweatshirt offers a solid build and soft interior, making it ideal for printing, layering, or everyday use. If you're sourcing for your shop or team, you can get the Gildan crewneck sweatshirt in bulk, including the popular Gildan fleece crewneck sweatshirt a smart choice for comfort and value across the board.

*UNLIMITED COLORS, DOUBLE SIDED, SLEEVES
ADDITIONAL COST



CUSTOM POLO

Our Gildan 8800 Polo's are 50% preshrunk cotton, 50% polyester; DryBlend fabric wicks moisture away from the body; welt-knit collar and cuffs; heat transfer label; woodtone buttons; double-needle stitched hemmed bottom; three-button placket

*ONE COLOR PRINT, DOUBLE SIDED. SLEEVES
ADDITIONAL COST



Show your pride. Share your story.

Custom-branded gear isn't just merch, it's a powerful way to showcase your mission, your identity, and what your business stands for.

Let our products go to work for you. Built with purpose and precision our gear stands at attention delivering for you.

- **INCREASED VISIBILITY**
- **STRONGER BRAND RECOGNITION**

And a **BOLD** presence that commands respect.

With our product lineup you can mix and match to find the items that work best for you

- **LEATHER AND SLATE COASTERS**
- **WALLETS**
- **LED PEN FLASHLIGHTS**
- **KEY CHAINS**
- **BOTTLE OPENERS**

Each crafted with high-quality materials and designed to leave a lasting impression. These practical, everyday items not only enhance your brand's presence but also create meaningful connections with employees and clients.



01 FLASHLIGHTS

Compact and powerful, this battery-operated flashlight is laser-engraved with your business details perfect for branding, promotions, or everyday use.

06



02 LEATHER COASTER

Premium leather coasters in your choice of round or square, perfect for a polished and durable branded touch.



03 SLATE COASTER

Elegant slate coasters available in round or square, adding sophistication to any space with your custom engraving.



04 MINIMALIST WALLET

Streamlined and durable, our minimalist wallets combine sleek design with practicality.



05 KEYCHAINS

Premium leather keychain, laser-engraved for a bold, custom touch durable, stylish, and built to last.



KEY CHAIN BOTTLE OPENERS

Compact, practical, and ready to impress, our Laser Engraved Keychain Bottle Openers are the perfect blend of convenience and customization. Crafted from durable metal and designed to clip onto your keys, backpack, or cooler, these openers are always within reach when it's time to crack open a cold one, while offering everyday functionality.



USB THUMB DRIVE

Combine function with sleek personalization using our Laser Engraved USB A Thumb Drives. Built for everyday storage needs, these drives feature a durable metal or plastic casing and are precision laser engraved with your custom logo, text, or design creating a clean, permanent mark that won't fade or rub off. Make a lasting impression with every file transfer professional, practical, and perfectly personalized.

SOFT TOUCH STYLUS PENS



Add a pop of color and smooth functionality to your writing experience with our Soft Touch Stylus Pens. These sleek pens feature a soft rubberized coating for a comfortable, slip-free grip, paired with vibrant solid color accents beneath the barrel for a bold, modern look. Equipped with a responsive stylus tip for seamless use on all touchscreen devices, they're perfect for multitasking between paper and digital work.



SLIM LEATHER KOOZIES

LEATHER KOOZIES

These koozies are designed to snugly fit standard 12oz cans and can be customized with heat transfer vinyl or laser engraving, making them popular for personalized gifts and party favors. They provide a leather-like look and feel, often with a textured surface, and are available in various colors



BOTTLE OPENERS

Elevate your barware with the rugged sophistication of our Heritage Collection Premium Leatherette Bottle Openers.

Wrapped in high-quality leatherette that offers the look and feel of genuine leather, these openers combine durability with timeless style. Each piece is expertly crafted and customizable, making it the perfect gift, promotional item, or addition to your home bar.



Custom engraved cups are the perfect blend of style and functionality.

Designed to leave a lasting impression these durable, high-quality cups are ideal for promoting your business, celebrating events, or creating personalized gifts that stand out.

With precision laser engraving, your logo, name, or artwork becomes a permanent feature that won't fade or peel, ensuring your design stays vibrant for years to come.

Available in a variety of sizes and colors, they're a versatile choice for everything from corporate swag to unique keepsakes. Whether it's coffee in the morning or a cold drink after a long day, these cups make every sip special



Crafted custom just for you!



07

GET CUSTOMIZED

Your brand on our high-quality products. We provide end-to-end service including: design, promotional material stuffing, and drop shipping. Take advantage of our low-minimum order quantities on Drinkware, Coolers, and Bags.



THE REAL DEAL

Hardworking Gear for All

We believe everyone deserves to enjoy the outdoors with gear they can rely on. That's why all our products are engineered the right way, made with quality materials and durable designs, to achieve two simple things, keeping your drinks icy cold and your wallet happy.



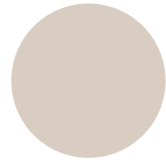
We carry most RTIC drinkware, if you have something in-mind we probaly carry it and can make your idea come to life!

HOW TO ORDER



DREAM IT!

Got an idea? Bigfoot riding a dirt bike? A bold logo that screams YOU? Share your vision! Our customization options make anything possible.

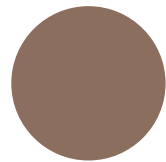


DESIGN IT!

Our team of perfectionists brings your idea to life. We craft it, tweak it, and make sure it's 100% awesome before moving on.

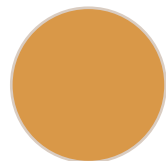


THIS SPACE IS BLANK SO YOU
CAN DREAM IT HERE OR USE IT
FOR ORDER NOTES



ORDER IT!

Pick your favorite merchandise from our catalog hats, shirts, tumblers and more. We'll take it from there!



ROCK IT

Wear it, show it off, and own the look that's uniquely yours. Heads will turn guaranteed.

08

PS: Our products make for great fund raising opportunities for schools, churches, and other causes.
Send us an email at info@patriotetchworks.com for more information.

WHY PATRIOT ETCHWORKS

WHEN IT COMES TO CUSTOM-BRANDED MERCHANDISE, PATRIOT ETCHWORKS STANDS OUT FOR OUR PRECISION, QUALITY, AND COMMITMENT TO SERVICE. AS A DISABLED VETERAN-OWNED BUSINESS, WE TAKE PRIDE IN EVERY PRODUCT WE DELIVER AND WE BACK IT UP WITH A GUARANTEE, IF AN ENGRAVING EVER FADES OR FAILS DUE TO CRAFTSMANSHIP, WE'LL REPLACE THE ITEM. THAT'S OUR PROMISE TO YOU: MERCHANDISE BUILT TO LAST AND BACKED BY INTEGRITY.

OUR ADVANCED LASER ENGRAVING TECHNOLOGY SETS US APART FROM THE COMPETITION. WE OFFER A WIDE RANGE OF CUSTOMIZABLE PROMOTIONAL PRODUCTS FROM STAINLESS STEEL DRINKWARE AND TOOLS TO CORPORATE GIFTS AND BRANDED GEAR ALL PERSONALIZED WITH SHARP, DETAILED ENGRAVINGS. WHETHER YOUR BRAND CALLS FOR CLEAN MINIMALISM OR INTRICATE DETAIL, WE DELIVER CRISP, PROFESSIONAL RESULTS THAT ELEVATE YOUR IMAGE.

AT PATRIOT ETCHWORKS, WE NEVER CUT CORNERS. WE REFUSE TO USE CHEAP OR UNRELIABLE PRODUCTS. EVERY ITEM WE SOURCE IS SELECTED FOR DURABILITY, APPEARANCE, AND FUNCTION SO YOU CAN BE CONFIDENT THAT YOUR BRAND IS REPRESENTED WITH QUALITY THAT MATCHES YOUR STANDARDS.

OUR SERVICE DOESN'T STOP AT THE SALE. WE'RE COMMITTED TO EXCEPTIONAL CUSTOMER SERVICE AT EVERY STAGE FROM YOUR FIRST INQUIRY THROUGH TO DELIVERY. NEED HELP FINALIZING YOUR LOGO LAYOUT OR CHOOSING THE RIGHT PRODUCT FOR YOUR AUDIENCE? WE'RE HERE TO GUIDE YOU. IF AN ISSUE EVER COMES UP, WE'LL MAKE IT RIGHT QUICKLY AND RESPECTFULLY.

WHEN YOU WORK WITH PATRIOT ETCHWORKS, YOU'RE NOT JUST ORDERING PROMOTIONAL ITEMS. YOU'RE INVESTING IN PROFESSIONAL CRAFTSMANSHIP, DEPENDABLE SERVICE, AND PRODUCTS THAT SPEAK VOLUMES ABOUT YOUR BRAND.



Cody Gordon **FOUNDER & CEO**

"As a proud U.S. Marine Corps veteran, I bring a passion for precision, discipline, and craftsmanship into every project at Patriot Etchworks. With a deep respect for service and a creative eye for design, I specialize in delivering high-quality, customized solutions that help businesses across the nation stand out with purpose. From concept to completion, I am dedicated to making sure each piece reflects the values, identity, and mission of the client while upholding the integrity and work ethic instilled during my time in uniform."



Corey St.Clair **VP of Sales**

"As a proud Marine Corps Veteran, I bring discipline, integrity and a unwavering commitment to excellence with everything I do. At Patriot Etchworks, those core values are the foundation of how I run my business and serve my clients. I believe in more than just selling custom merch, I believe in building real relationships and delivering top-notch service with every order."

Whether you're a small business owner, a corporate team, a nonprofit or growing brand, my mission is to help you create quality, customized merchandise that reflects your values and leaves a lasting impression. I don't just want your business, I want to earn your trust."

713-449-2707
WHITEWATER WISCONSIN 53190

INFO@PATRIOTETCHWORKS.COM
HTTPS://PATRIOTETCHWORKS.COM