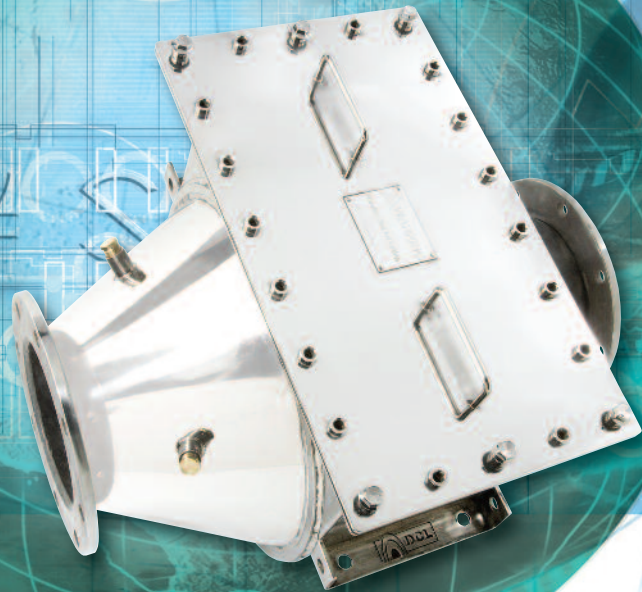


Emission Control Solutions



RICE NESHAP
Compliance

Natural Gas | Diesel | Dual-Fuel

RICE NESHAP

Your compliance toolkit at a glance
from the leader in emission control solutions...

Are you ready for RICE NESHAP? With the recent passing of the US EPA rule for reciprocating internal combustion engines to meet the national emission standards for hazardous air pollutants (commonly called the RICE NESHAP rule), many existing in-service engines will require retrofit with catalytic emission control.

When it comes to upgrading industrial engines in gas compression, power generation and co-generation, DCL is the world leader in engineered catalyst systems, with thousands of successful installations in North America, Europe and Asia.

DCL catalyst systems are specifically designed for long term, problem free operation under the harshest environments for heat, vibration and catalyst fouling. DCL experience not only includes modern high speed engines, but extends to old legacy engines, compressor integrals, engines with high oil consumption, and a wide variety of liquid and gaseous fuels.

In fact, we've engineered catalyst systems for just about every type of engine and application out there. When it comes to RICE NESHAP compliance, your company's environmental reputation is at stake. Call the worldwide experts who know how to do it right. Call DCL.



CUSTOM ENGINEERED Catalytic Silencers

500 to 10,000 hp

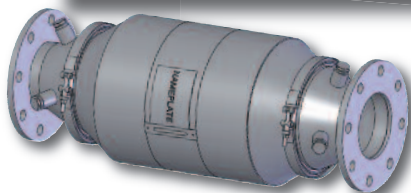
- Vertical catalytic silencers for site specific requirements
- Ground access for catalyst elements
- Engineered to fit directly into the exhaust system of an existing plant
- Designed for meeting site specific structural loads, including wind and stack
- Designed for site specific sound attenuation
- Available in stainless steel or mild steel
- Available with special surface coatings and insulation options



MINE-X® Catalytic Converters

50 to 700 hp

- High efficiency brazed metal catalyst elements
- Simple and effective v-clamp design for easy servicing
- Modular design easily accommodates more catalyst elements
- Heavy gauge stainless steel construction



QUICK-LID® Catalytic Converters

300 to 3,000 hp

- Available with high efficiency brazed and non-brazed metal catalyst elements
- Stainless steel catalyst housings
- Fast delivery and easy servicing of catalyst elements
- Patented system for gasket-free sealing of catalyst elements

