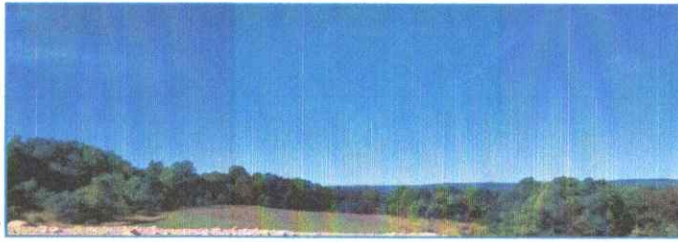
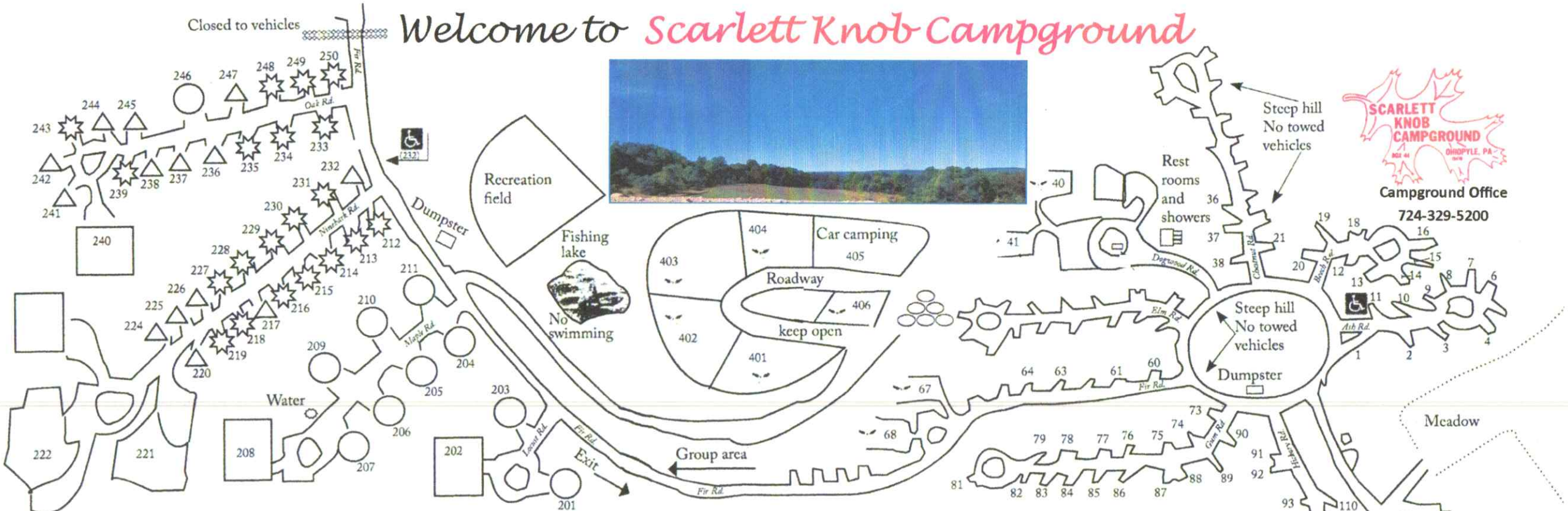









# Welcome to *Scarlett Knob Campground*



**Scarlett Knob Campground**  
Campground Office  
724-329-5200



-  **Handicapped accessible**
-  **Boy Scout site**
-  **2 TO 4 ADULTS**  
SITE MARKERS have yellow numbers on green backs.
-  **5 TO 8 ADULTS**  
SITE MARKERS have white numbers on green backs.
-  **9 TO 16 ADULTS**  
SITE MARKERS have white numbers on yellow backs.
-  **17 TO 35 ADULTS**  
SITE MARKERS have white numbers on blue backs.
-  **36 TO 60 ADULTS**  
(hand-drawn shapes)  
SITE MARKERS have white numbers on black backs.

Upon arrival, please inspect your site for existing damage. Immediately report any damage to the office staff by phone at 724-329-5200. (All sites that have been occupied any day are inspected before the next campers arrive.)

**Trees** - Do not disturb standing trees. Ropes tied to trees for tarps or hammocks are fine. Hang lanterns far from tree trunk to avoid burning tree. No tools, nails, screws, eye hooks in trees.

**Fires** - Keep camp fires contained to existing fire ring(s). Do not move existing or build additional fire rings.

**Tables & rocks** are not to be moved.

All vehicles are to remain on designated roadways. Dirt bikes, mini-bikes, ATVs, UTV's and golf carts are not to be driven on this property.

Bicycles are permitted. Helmets are required when riding on grounds.

**Children** - Guests are responsible for the behavior of children. We request campers 16 & under be accompanied by an adult if leaving the camp site. Please do not leave children unattended on grounds.

If you would like a different site, please return to the office and check with staff for availability.

House Pets are welcome. Pets must be controlled on a leash of 6 feet or less, and attended at all times. Pets are not to be left on grounds. When you go off grounds, they must go with you. Please REGISTER pets upon arrival.

Respect Please respect the rights & privacy of other campers.

Excessive Noise, abusive, drunken, or offensive behavior will not be permitted at any time.

The use of Fireworks is not permitted on grounds.

### Quiet Hours

Family Area Quiet Hours (Sites 1 - 110) are from 9pm to 9am. Group Area Quiet Hours (Sites 201 - 250) are from Midnight to 9am. During Quiet Hours, please turn radios/electronic devices off. Conversations in the site are welcome, as long as they can not be heard outside the campsite. 'Noise After Quiet Hours' - Call 724-329-5200.

