

# *The Biscayne*

## The Biscayne



Elevation A

Jeff Whiting  
(614) 202-9763  
jeff.whiting@trinity-homes.com  
www.OHNewHomes.com

35  
YEAR  
WARRANTY

MEMBER  
BIA  
The Home Builders

EQUAL HOUSING  
OPPORTUNITY





TRINITY  
HOMES



# The Biscayne

## Illustrated Plan Options

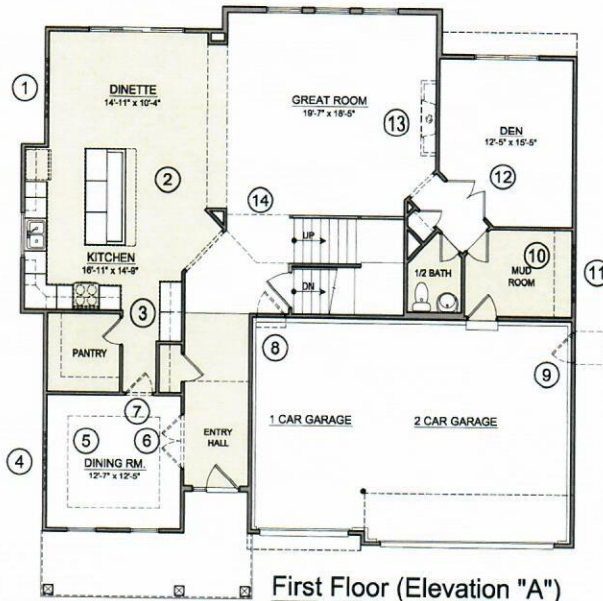
- 01 2860-2 SH Side Dinette Windows
- 02 Deluxe Kitchen
- 03 Bar I/L of Standard Cabinets
- 04 2860-2 SH Side Dining Room Windows
- 05 Tray Ceiling
- 06 2668-2 15 Lite Entry hall Door
- 07 2668 15 Lite Pantry Hall Door
- 08 2868 House to Garage Door
- 09 2868 Garage Service Door
- 10 Mud Room Cubbies
- 11 5010 FX Mud Room window
- 12 2668-2 15 Lite Den Door I/L of standard
- 13 Direct Vent / Prefabricated Fireplace
- 14 Extended Entry Hall Floor
- 15 6060 Soaking Tub I/L of 3660 Tub
- 16 Shower Door Return Panel
- 17 Upper Stair Railing I/L of Half Walls
- 18 Laundry Tub
- 19 (3) 3430 FX Transom Great Room Windows
- 20 Master Cathedral Ceiling
- 21 Master Tray Ceiling
- 22 Master Closet Island

Shaded areas indicate hard floor surface

Additional options not illustrated are available, please request from Sales Consultant

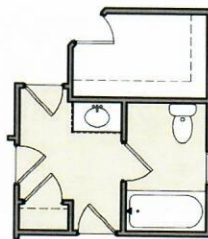
### Symbol key

- Approx. Furnace and Hot Water Heater Location.
- Sump Pump Location
- Electric Service Location (Subject to Change)
- Steel Post Location
- Exterior A/C Unit

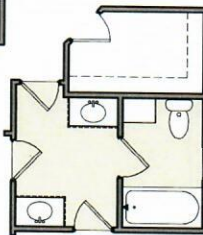


First Floor (Elevation "A")

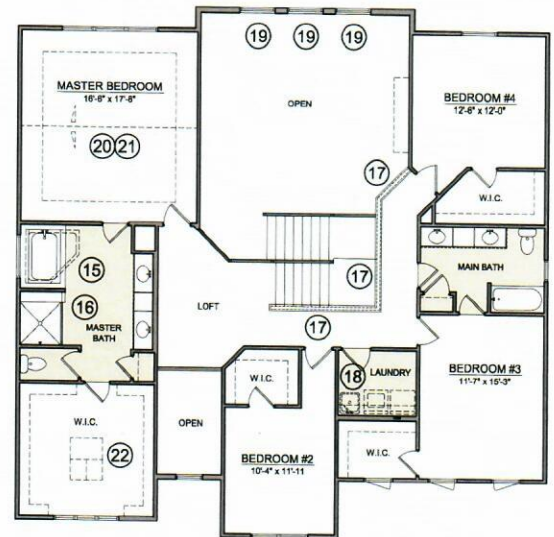
9' Ceilings



OPTIONAL  
JACK & JILL BATH  
1 BOWL

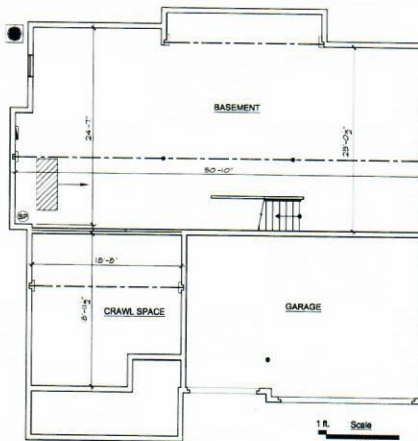


OPTIONAL  
JACK & JILL BATH  
2 BOWL

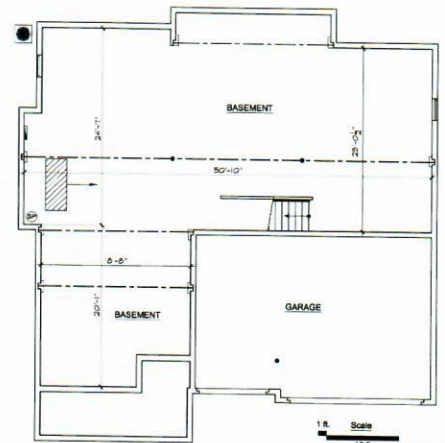


Second Floor (Elevation "A")

8' Ceilings



Elevation "A" - Standard Basement Plan



Elevation "A" - Optional Full Basement Plan

35 YEAR WARRANTY  
MEMBER BIA  
The Home Builders Association of America  
BROKER PARTICIPATION WELCOME

Jeff Whiting  
(614) 202-9763  
jeff.whiting@trinity-homes.com  
www.OHNewHomes.com