

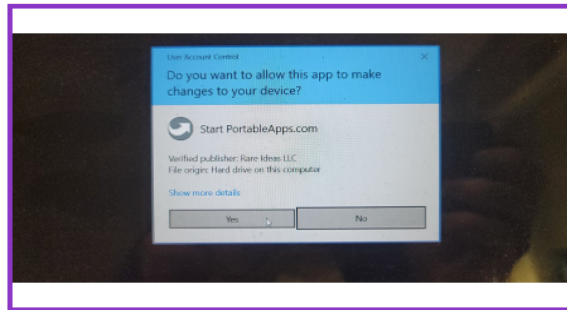


# First Name Almanac PRO-Main Menu

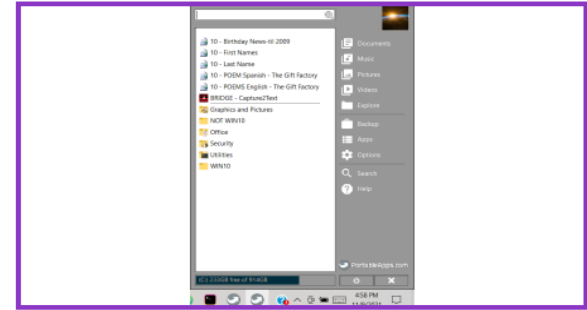
Sponsored by KKSoft.biz & EasyGiftWizard.com



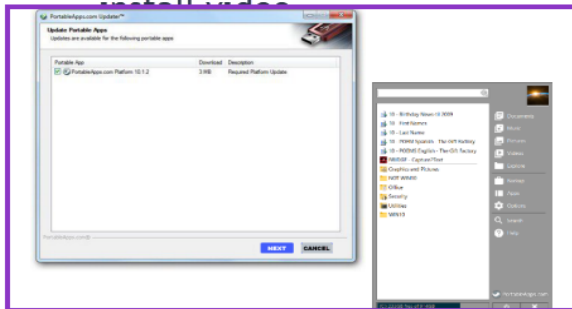
1 Double LEFT click on the START menu icon we PINNED to the TASK BAR at the end of the



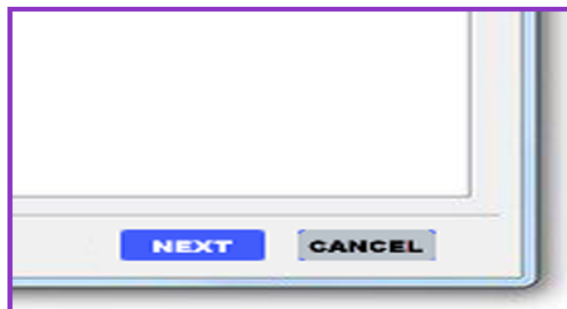
2 Some systems might ask if you want to run the Portable Apps menu. Say YES! This will open our MAIN MENU.



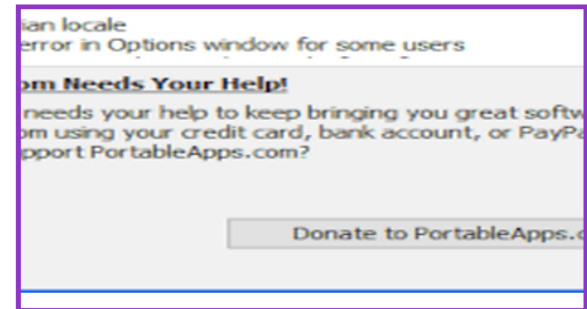
3 The menu will pop-up on the right, above the CLOCK. Wait a moment to see if there is an UPDATE window pop-up.



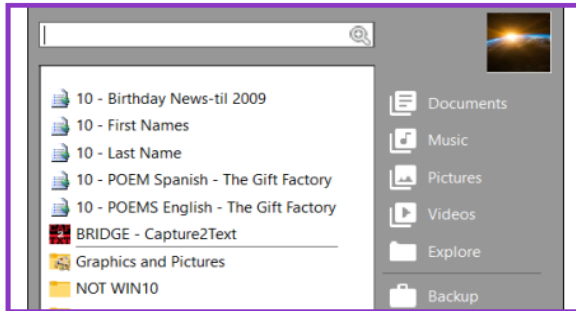
4 If there is then you do not *always* need to update, you could CANCEL. But if you press NEXT then you MUST NOT STOP it while updating.



5 \* NEXT will begin the UPDATE which takes about 1 minute.  
\* CANCEL will safely close the UPDATE window. You can then use the menu.

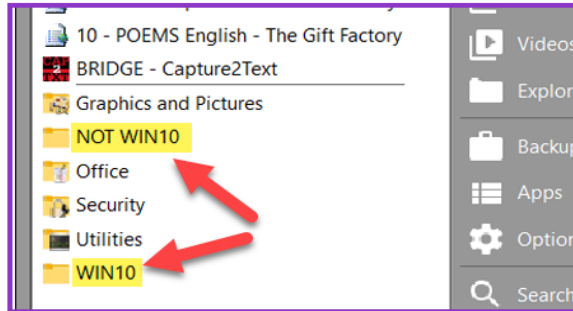


6 If you do update, then on the FINISH screen it will ask for a DONATION. They would appreciate if you do! We pay with each install we sell.



**7** The menu found on the lower right of our screen.

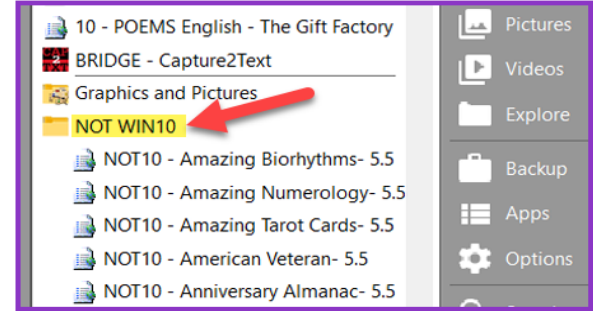
The main apps, First Names, etc. are in the top half above the BRIDGE and the center line.



**8** Two folders have all the apps.

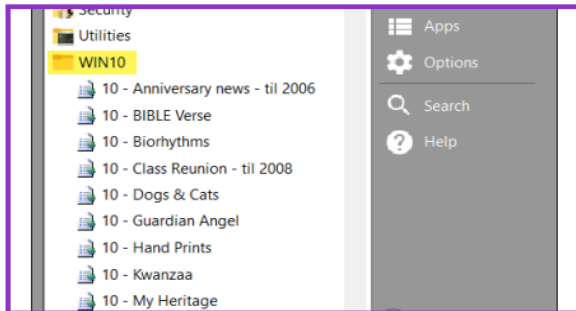
These two folders are below the BRIDGE and the center line.

- \* NOT WIN10 folder
- and
- \* WIN10 folder



**9** Click the NOT WIN10 folder to find all the apps which run great in XP, Vista, 7 & 8, but not in WIN10

These newer apps were written in Visual Basic 6 (VB6) I have not been able to convert these for WIN 10.



**10** Click open the WIN10 folder to find all the WIN10 apps you purchased. They also run great in XP, Vista, 7 & 8, as well as WIN 10.

(WIN 11 has not been tested!)



**11** Note: You are allowed up to three installs; e.g. maybe an XP at home, a WIN10 at work, and a WIN-8 as a backup. You may use only one at a time to create products.

(NOT three active locations)

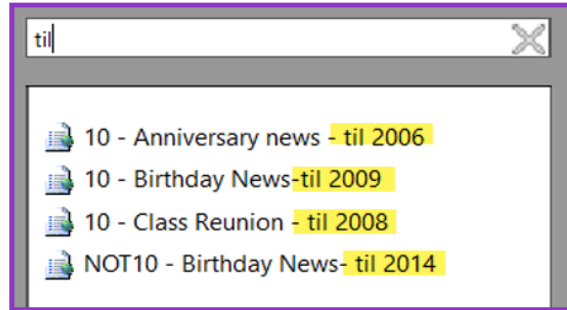


**12** There is *nothing wrong* with using one install to display names to customers, and another to create products. Or You might have an old XP to run the NOT WIN10 apps and WIN10 apps on another!

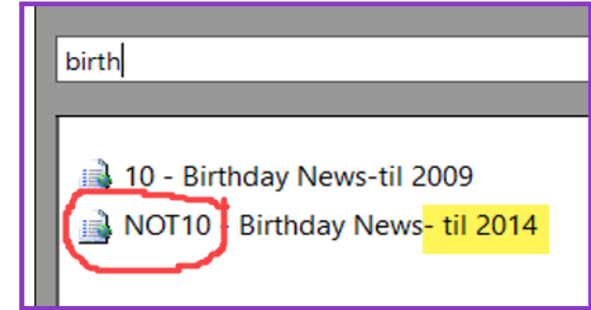


**13** All the apps are XP, Vista, 7, & 8 compatible.

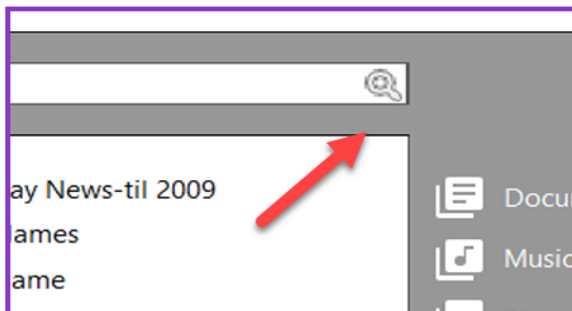
\* "10 -" are the older VB (Visual Basic) apps that *could* be fixed to also run in WIN10.  
\* "NOT10" are the newer apps, written in VB6, and *could not* be fixed for WIN10.



**14** Apps using date data can not be updated. They say "- till a DATE". Without Ken's source code I can not update these. Ken sent out yearly updates, but no one has shared any of these with me so that I could figure them out. **HELP!**



**15** Use the "NOT 10" versions on XP, Vista, 7, & 8 they are newer than the "10 -" versions. e.g. Birthday News is the Birthday Chronicles. Note the NOT10 goes "till 2014" where "10-" version is only "till 2009."

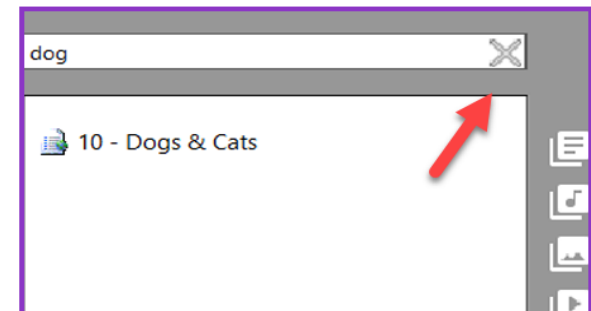


**16** A search field is at the top of the menu. Use it to find apps.

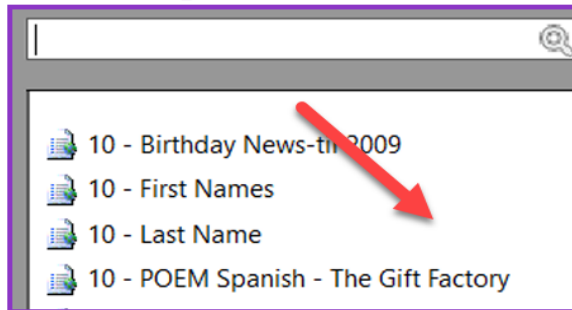
This field has a spyglass at its right end. Click in this field and begin to type the name of the app you want to find.



**17** Type in the search field to find an app. I typed "dog." As I typed it displayed matches. It found the Dog & Cat app I was looking for. 10 - denotes that it is WIN 10 compatible. It can use it in 10 as well as XP, Vista, 7 & 8.



**18** Click on the X to clear the search, then at the right end of the search field.



19 To run an app SINGLE CLICK on it. Do not double click! If you double click it will open the app twice.



20 The first time you open an app give it time. It will take a little longer than normal while it builds its data structures. Last Names, the first time, can take several minutes.



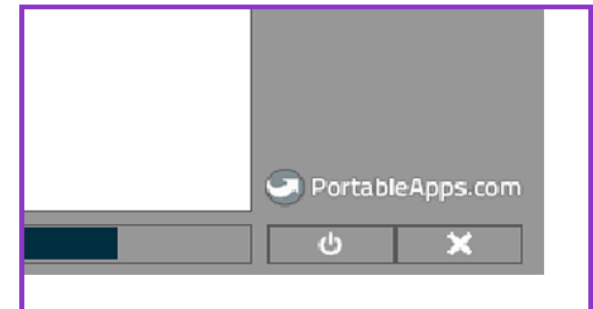
21 The HOME screen for the app will open.



22 Wait as long as the mouse pointer is spinning. Move the mouse a little, it is ready to use when the mouse pointer returns.



23 NEVER click on the power button!  
It will shut down WINDOWS. You have been warned!



24 To close the menu, click on the X at the lower right of the menu.

When closing the menu be sure all opened KKSoft apps have been closed first.