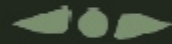


CATORCE LOFT



M I D T O W N

CLASSIC ZONE OF MAZATLÁN

Mazatlán offers the experience of walking through streets and alleys with vibrant stories on a magnificent journey through its historical past.

Its Historic Center houses architecture with traditional houses and majestic buildings, which today represents a new investment opportunity in traditional areas.



CATORCE LOFT



M I D T O W N

It offers architecture with a delicate fusion of elegance and simplicity in an atmosphere of exclusivity for a home, representing a heritage that transcends through its own essence.

Catorce Loft brings together tradition and visual harmony in spacious areas that allow you to enjoy a unique lifestyle exclusive to the southern part of the city.



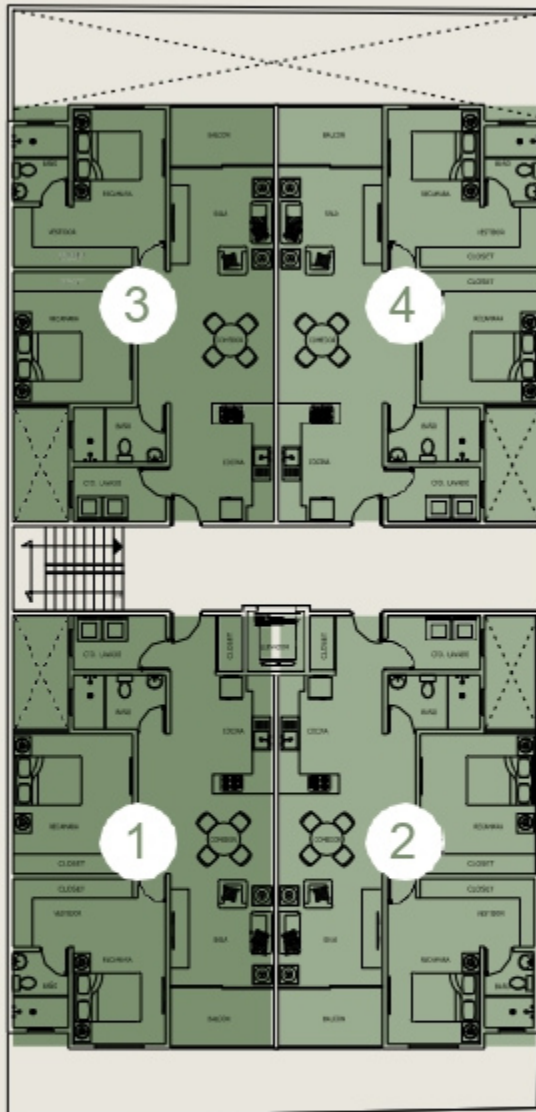




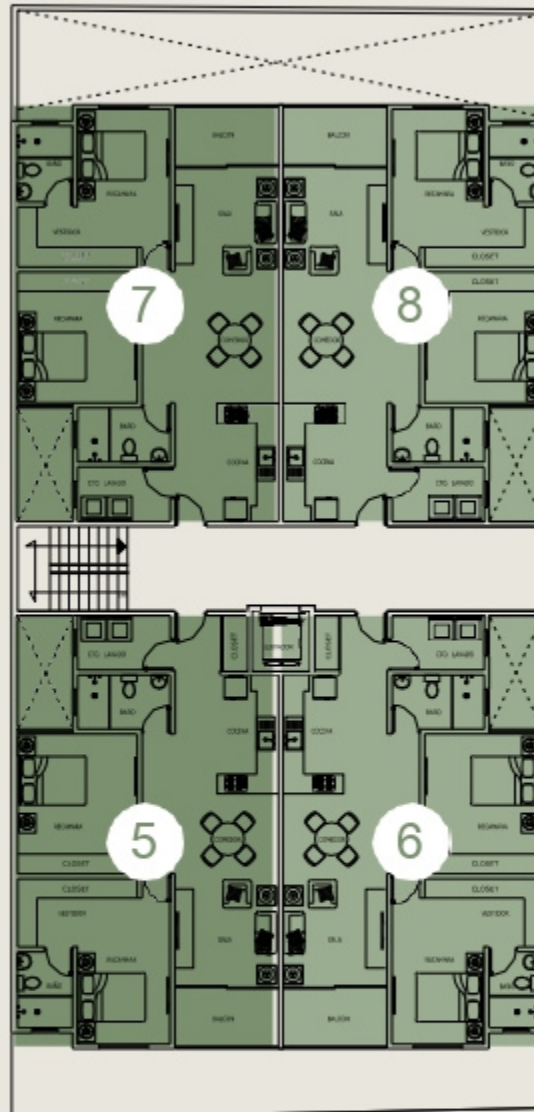
It consists of 14 condominiums spread across 4 levels and parking.



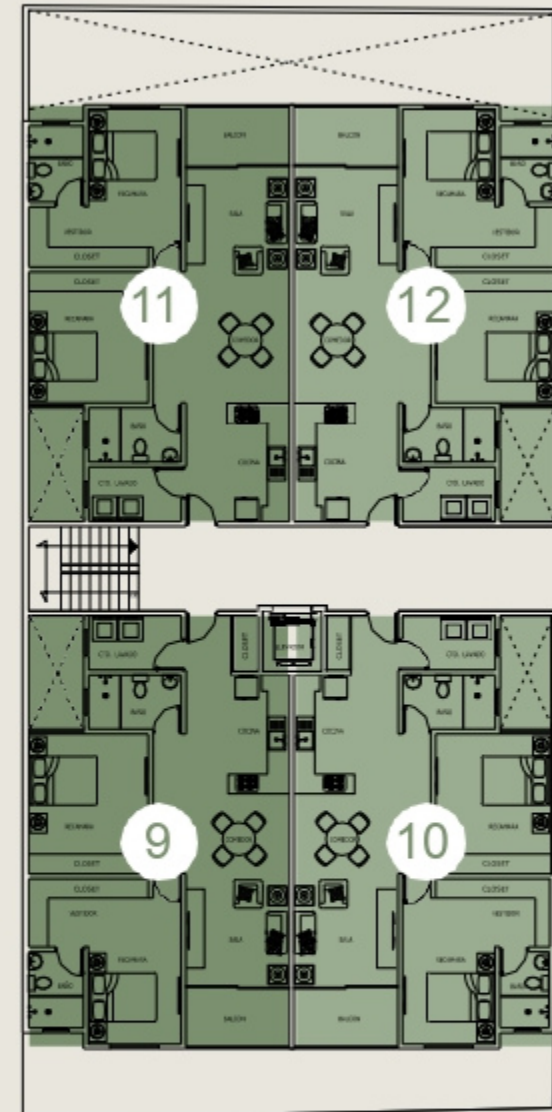
Each condominium is designed to create a home where you can feel the peace and freshness offered by the lifestyle on the Pacific Ocean.



Architectural plan, Level 1

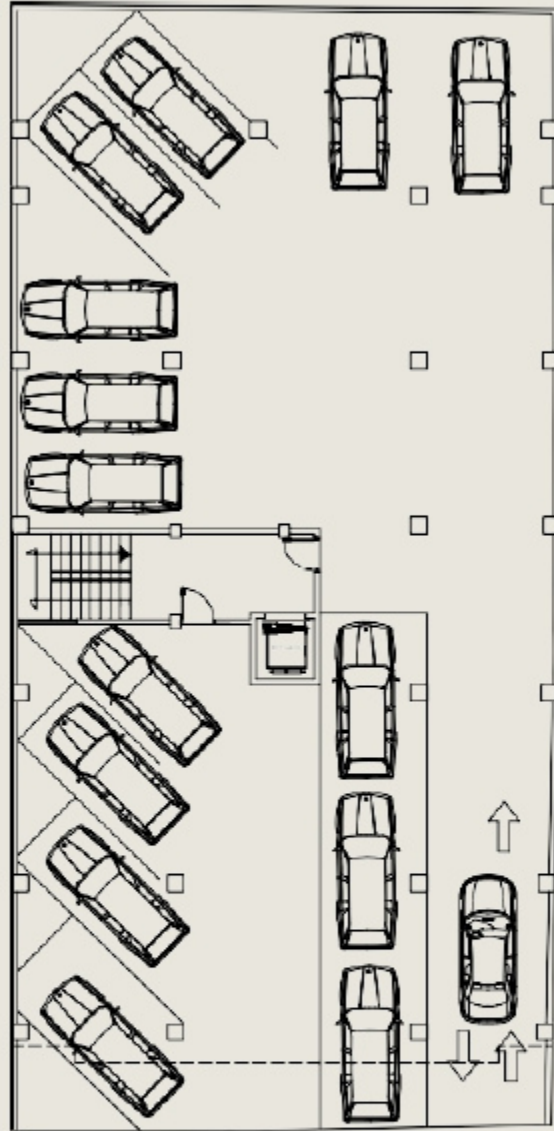


Architectural plan, Level 2

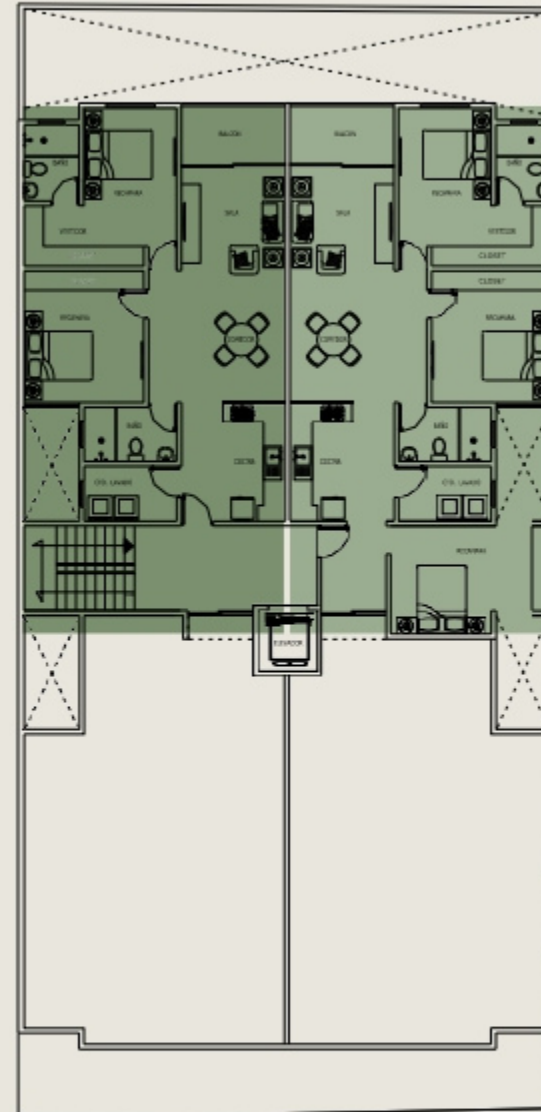


Architectural plan, Level 3





Ground floor architectural plan



Architectural plan, Level 4



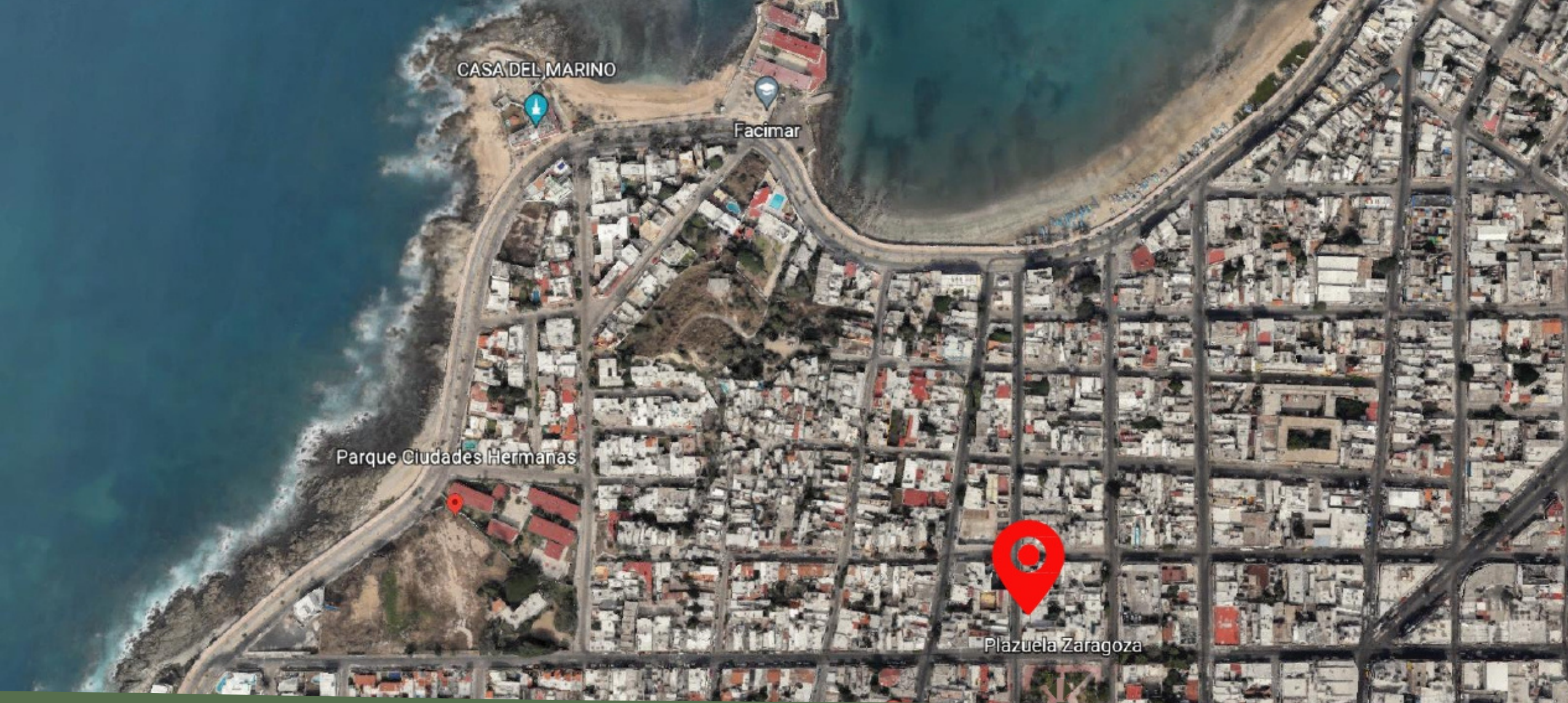


- * 1033.34 ft²
- * 2 bedrooms with closets
- * 2 bathrooms with tempered glass enclosures
- * Kitchen with stove and hood
- * Laundry room
- * Heater
- * 3 A/C units
- * 1 parking space









5 de Mayo 2204, Centro, 82000 Mazatlán, Sinaloa.

<https://maps.app.goo.gl/gLXXVGL7URMG6vJp8>



Ask for our financing plans.