



Where truth is explored, identity is remembered, and becoming is written in real time.



THE COST OF

Consensus

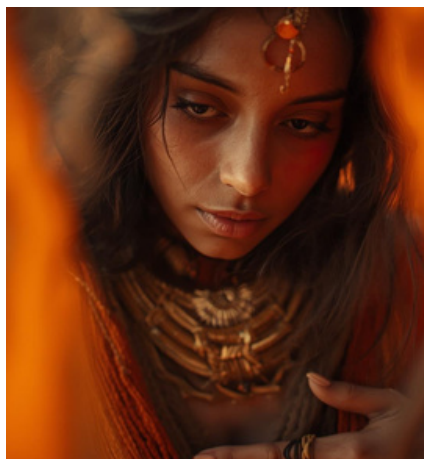
There is a habit many thoughtful women develop over time. It begins with care.

You want to make the right decision. You want to consider the impact on others. You want to avoid unnecessary conflict.

So before deciding, you ask.

**A friend.
A partner.
Someone you trust.**

**You gather perspectives.
You listen.
You weigh options.**



At first, this feels responsible. Even wise.

But somewhere along the way, something subtle begins to shift.

The decision no longer belongs fully to you. It becomes a negotiation with the room.

When Thoughtfulness Becomes Dependency

Listening is not the problem.

Perspective can expand understanding. Advice can reveal angles you had not considered.

But there is a difference between: seeking input and outsourcing authority.

And that line is easy to cross.

When every decision requires validation, something important begins to weaken. Your *internal* compass.

Instead of asking: *"What feels true for me?"*

The question becomes: *"What will everyone else think?"*

And slowly, without noticing, your centre of authority moves outward.



The Habit of Polling *the Room*

”
The more you
ask the room
who you should
be, the quieter
your own voice
becomes.

For many women, this habit did not begin as insecurity. It began as adaptation. You learned to: read the room, anticipate reactions, maintain harmony.

Perhaps disagreement once felt unsafe. Perhaps approval created stability. Perhaps being understood mattered more than being expressed.

So you developed awareness. Sensitivity. Consideration. Emotional intelligence. But over time, that awareness turned outward. Instead of listening inward first, you began scanning the room.

The Body Already Knows

Long before the mind finishes analysing a decision, the body responds.

A sense of ease. A subtle resistance. Expansion. Or tightening.

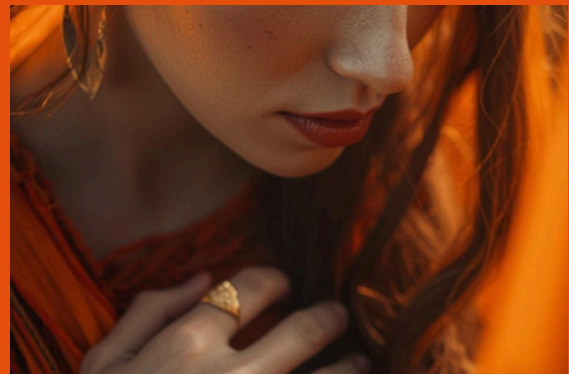
This is not instinct without reason. It is integration.

Your body processes:

- past experience
- emotional memory
- personal values

faster than conscious thought. Which is why truth is often *felt* before it is articulated.

But when the habit of external validation dominates, that signal is ignored. The room becomes louder than the body.



“Clarity does
not require
consensus. It
requires
honesty.”

The Cost of Consensus

Consensus creates comfort. It maintains harmony. It avoids tension. It keeps relationships stable.

But consensus rarely reflects truth. It reflects agreement. And agreement is not the same as alignment. Because the decisions that move your life forward will not always feel comfortable to others.

They may:

- disrupt expectations
- challenge dynamics
- require change

And when you choose consensus over clarity, something subtle begins to happen. You start living slightly off course. Not dramatically wrong. But not fully aligned.

The Erosion of Self-Trust

Self-trust does not disappear all at once. It fades gradually. Each time you override what you feel in favour of what others think, the connection weakens.

You begin to hesitate. To second-guess. To look outward for reassurance. Until even simple decisions feel uncertain.

Not because you don't know.
But because you've stopped listening.

The Turning Point

At some point, something becomes clear. The problem was never perspective. The problem was sequence.

You were asking the room first. Instead of yourself. And the shift is simple. But powerful.

Pause. Before asking anyone else.

Notice:

- what your body is telling you
- what feels aligned
- what feels true

Then, if needed, invite perspective.

Not to decide for you. But to expand your awareness

Internal Authority

Internal authority does not mean ignoring others. It means returning the decision to where it belongs.

Inside your own awareness.

You can still:

- listen
- consider
- reflect

But the final decision does not require agreement.

It requires clarity.



The Identity Shift

Over time, something changes.

You stop being:

"someone who needs to check with others"

And become:

- someone who listens inward
- someone who trusts their response
- someone who can hold disagreement without collapsing

This is not disconnection.

It is self-leadership.

Conclusion: **Your** Life Is Not a Group Decision

The desire to consider others often comes from care.

But care becomes distortion when it overrides truth.

Your life is not a committee project.

It is an expression of:

- your values
- your direction
- your willingness to listen inward

Consensus may create harmony. But harmony without authenticity eventually becomes constraint.

And the decisions that shape your life will not always be agreed upon.

They will simply be *clear*.



”

The moment you
stop polling the room
is the moment your
life becomes your
own.

—
Nelia C Pereira