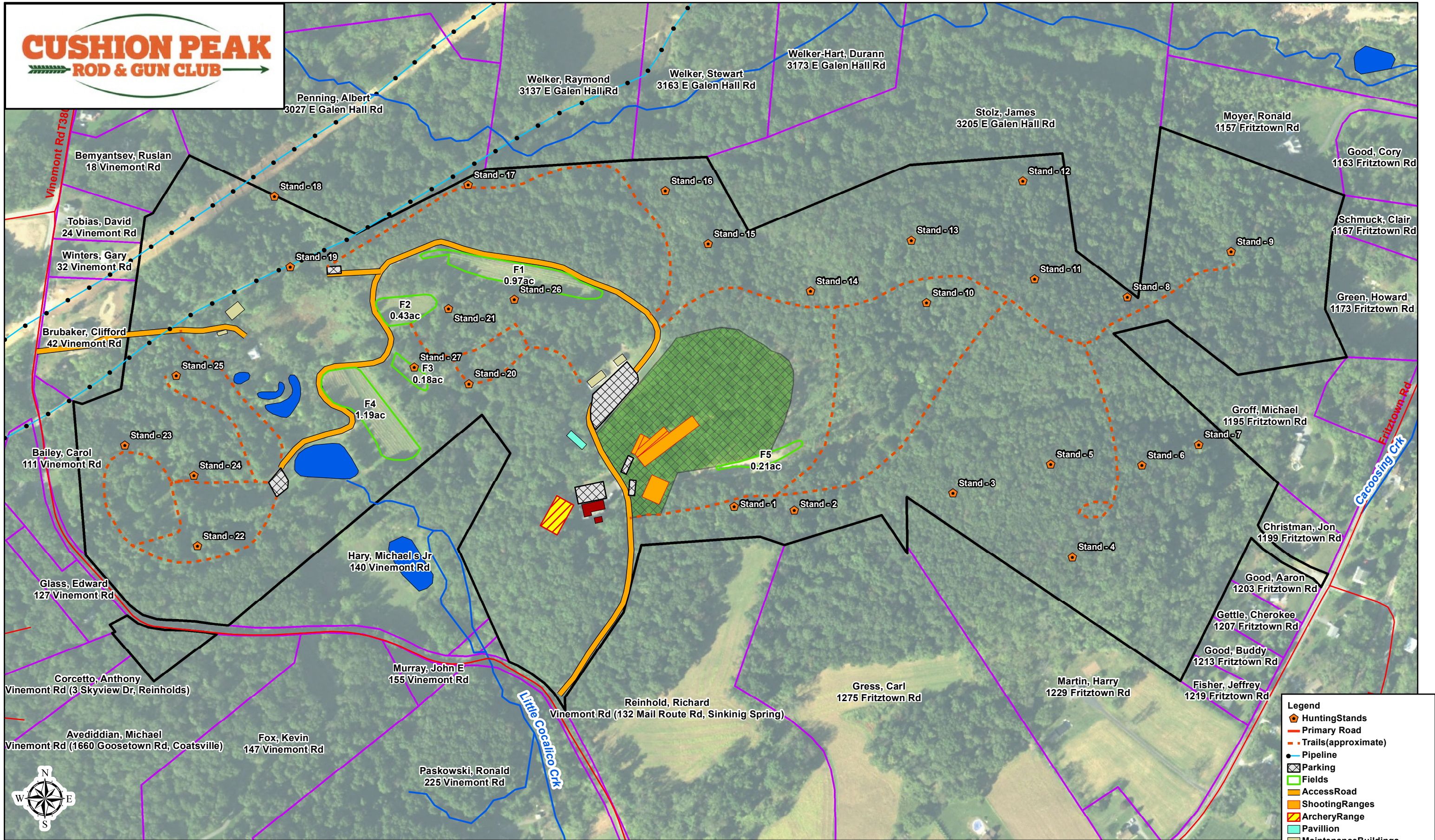


# CUSHION PEAK ROD & GUN CLUB



Legend	
	Hunting Stands
	Primary Road
	Trails (approximate)
	Pipeline
	Parking
	Fields
	Access Road
	Shooting Ranges
	Archery Range
	Pavillion
	Maintenance Buildings
	Club House
	Propagation Area (No Hunting)
	Property Boundary
	Neighboring Property

## CUSHION PEAK ROD AND GUN CLUB- TREE STAND DESCRIPTIONS

STAND #	HIEGHT	GPS LOC.	DESCRIPTOIN/LOCATION:	NOTES:
1	14'	40.28877 / -76.08269	2-MAN STEEL STAND, AT&T LINE NEAREST CLUB HOUSE	
2	12'	40.28872 / -76.08189	2-MAN STEEL STAND, AT&T LINE NEAR #1	
3	12'	40.28886 / -76.07978	2-MAN STEEL STAND, AT&T LINE ACROSS VALLEY FROM #2	
4	12'	40.28819 / -76.07821	2-MAN STEEL STAND, HILLSIDE TOWARD FRITZTOWN RD.	
5	12'	40.28914 / -76.07847	2-MAN STEEL STAND, HILLSIDE TOWARD FRITZTOWN RD.	
6	12'	40.28911 / -76.07726	1-MAN STEEL STAND, HILLSIDE TOWARD FRITZTOWN RD.	
7	13'	40.28931 / -76.07650	1-MAN STEEL STAND, HILLSIDE TOWARD FRITZTOWN RD.	
8	13'	40.29083 / -76.07741	1-MAN STEEL STAND, JUST BEFORE #9 SAME TRAIL	
9	13'	40.29127 / -76.07602	1-MAN STEEL STAND, FURTHERST STAND NEAR MOYER PROP.	
10	12'	40.29081 / -76.08008	2-MAN STEEL STAND, VALLEY NEAR PROPOGATION AREA	
11	21'	40.29103 / -76.07864	1-1/2-MAN STEEL STAND, HILLSIDE FACING GALEN HALL RD.	
12	12'	40.29203 / -76.07877	2-MAN STEEL STAND, HILLSIDE FACING GALEN HALL RD.	
13	13'	40.29145 / -76.08027	1-MAN STEEL STAND, HILLSIDE FACING GALEN HALL RD.	
14	12'	40.29095 / -76.08162	2-MAN STEEL STAND, HILLSIDE FACING GALEN HALL RD.	(WAS STAND 8B)
15	12'	40.29145 / -76.08297	LARGE STEEL PLATFORM NEAR PARKING LOT	NEEDS RE-PAINTED (WAS #14 NOW IT IS #15)
16	12'	40.29200 / -76.08353	2-MAN STEEL STAND, FACING GALEN HALL RD.	(WAS #15 NOW #16)
17	12'	40.29210 / -76.08615	2-MAN STEEL STAND/FIRST PIPELINE TOWARD GALEN HALL RD.	(WAS #16 NOW #17)
18	12'	40.29202 / -76.08873	2-MAN STEEL STAND/SECOND PIPELINE NEAR VINEMONT RD.	(WAS #17 NOW #18) IS NOW OUT OF SAFETY ZONE
19	GROUND	40.29130 / -76.08854	HANDICAP ACCESSIBLE BLIND ON 1ST PIPELINE/FOOD PLOT	6'X6' RED NECK BLIND "SEE USE REGULATIONS"
20	13'	40.29007 / -76.08619	2-MAN STEEL STAND/IN WALK THROUGH ARCHERY RANGE	NEW STAND
21	12'	40.29084 / -76.08644	2-MAN STEEL STAND 1ST FIELD DOWN HILL ABOVE POND	(WAS #22 NOW #21)
22	12'	40.28847 / -76.08984	WOOD PLATFORM ABOVE THE POND (WAS #21 NOW #22)	<b>ARCHERY ONLY- WITHIN RIFLE SAFETY ZONE</b>
23	12'	40.28951 / -76.09078	2-MAN STEEL STAND (WAS #19 NOW #23) ABOVE ORCHARD	<b>ARCHERY ONLY- WITHIN RIFLE SAFETY ZONE</b>
24	15'	40.28919 / -76.08987	2-MAN STEEL STAND BETWEEN ORCHARD & POND	NEW STAND (NEAR SMALL WOOD PLATFORM WAS #20)
25	14'	40.29021 / -76.09008	2-MAN STEEL STAND/NEAR OLD CABIN PONDS	(WAS #18 NOW #25)
26	12'	40.29092 / -76.08557	2-MAN STEEL STAND/NEAR TOP FIELD & ARCHERY RANGE	NEW USED STAND (POOR CONDITION REPLACE NEXT YR)
27	12'	40.29025 / -76.08691	1-MAN STEEL STAND, 2ND FIELD DOWN HILL ABOVE POND	NEW USED STAND- NO SAFETY RAIL

GENERAL NOTE: ALL STANDS NEED BRUSH CLEARING OF TRAILS AND SHOOTING LANES CUT, JOIN THE COMMITTEE AND HELP IF YOU HUNT HERE!