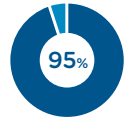


# BTL EMSELLA™

## SAY NO TO INCONTINENCE



FDA CLEARED FOR  
TREATMENT OF INCONTINENCE



OUTSTANDING  
RESULTS\*



TREATS ENTIRE  
PELVIC FLOOR AREA



PATIENTS REMAIN  
FULLY CLOTHED

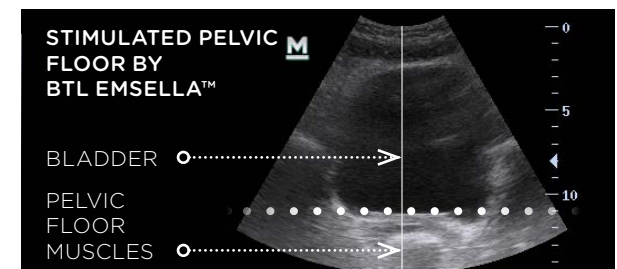
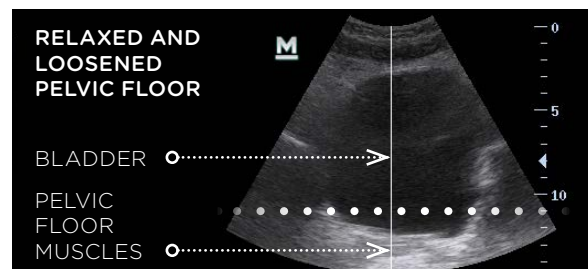
### BTL EMSELLA™

### A Breakthrough Treatment for Incontinence

## BACKED BY SCIENCE

Scientific research has shown that **95%** of treated patients reported **significant improvement** in their **quality of life**.\*

A frontal view of the **pelvic floor muscles and bladder** using ultrasound imaging.



EMSELLA.COM | INFO@BTLNET.COM



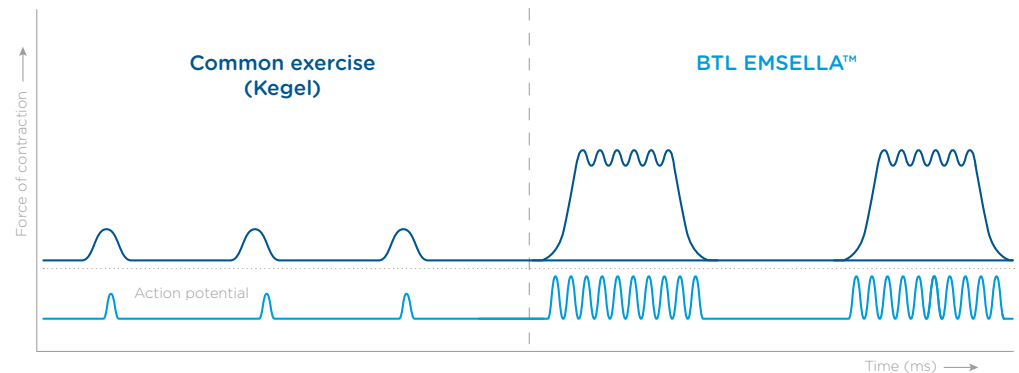
# FULLY FOCUSED ON INCONTINENCE

BTL EMSELLA™ utilizes **High-Intensity Focused Electromagnetic technology** (HIFEM) to cause **deep pelvic floor muscles stimulation** and restoration of the neuromuscular control.

Key effectiveness is based on focused electromagnetic energy, in-depth penetration and stimulation of the **entire pelvic floor area**.

A single BTL EMSELLA™ session brings **thousands of supramaximal pelvic floor muscle contractions**, which are extremely important in muscle re-education of incontinent patients.

## Myogram



## TECHNOLOGY THAT WORKS FOR YOU



"We place all our stress incontinence and overactive bladder patients on this chair. They are loving the 28-minute treatments. It is so easy sitting fully clothed on the chair, reading a magazine, and getting a full pelvic workout as if you had a private pelvic floor trainer beside you without the sweat!"

**Red Alinsod, M.D.**  
Alinsod Institute for Aesthetic  
Vulvovaginal Surgery



"I have never seen anything quite as innovative as the BTL EMSELLA™ for the treatment of incontinence. After treating and observing 20 different women with both urge and stress and mixed forms of incontinence I was pleasantly surprised and happy to see the relief my patients obtained from this therapy."

**Joseph Berenholz, M.D.**  
Diplomate American Board  
of Obstetrics and Gynecology



"BTL EMSELLA™ is the great opportunity in terms of speed of efficacy and modesty because patients don't have to undress. The BTL EMSELLA™ can offer significant and tangible improvement in the patients' quality of life."

**Tracey Sims, M.D.**  
General Practitioner,  
Greenfields Medical Chambers

\*HIFEM Technology Can Improve Quality of Life of Incontinent Patients, Berenholz J., MD, Sims T., MD, Botros G., MD, Individual results may vary. \*\*Once the therapy is started, there is no need for an additional operator activity. ©2017 BTL Group of Companies. All rights reserved. This document includes registered and/or unregistered U.S. or foreign trademarks. The products, the methods of manufacture or the use may be subject to one or more U.S. or foreign patents or pending applications.

099-79EMSOS176FENUS101  
BTL\_Emsella\_LF\_One-sheeter-176F\_ENUS101



BTL EMSELLA™ is intended to provide entirely non-invasive electromagnetic stimulation of pelvic floor musculature for the purpose of rehabilitation of weak pelvic muscles and restoration of neuromuscular control for the treatment of urinary incontinence in women.