

The Rebalancing America *and Beyond* Initiative™

The IGLUE PROJECT ADVISORY BOARD



Michelle Patterson
TouchPointe
CEO



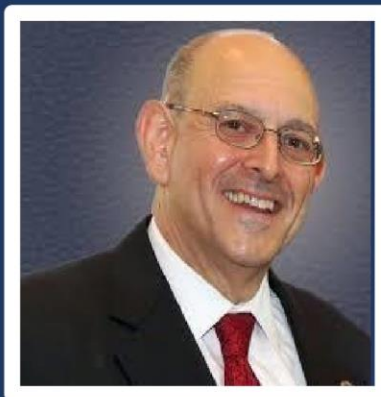
Dr. Fitzgerald Craan
Catholic Charities
Family Stabilization



Werner Berger
Quest736
Transformational Expeditions



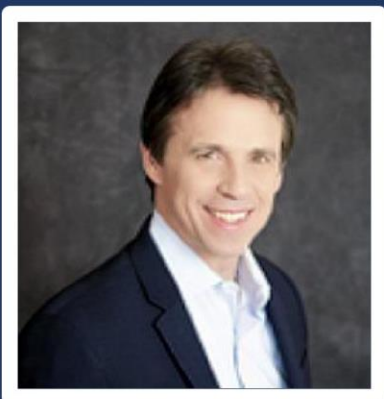
Dr. Tarashaon Broomes New
York Blood Center
Nurse Practitioner



Vincent Vicari, MBA
America's SBDC
Regional Director



Caryn O' Sullivan
Appetites for Life, LLC
Health/Nutrition Coach



Chris Salem
CRS Group Holdings
Life and Business Strategist
Radio Show Host



Beverly Cribbs, MsW
Bailey Vaughn Group LLC
President & CEO



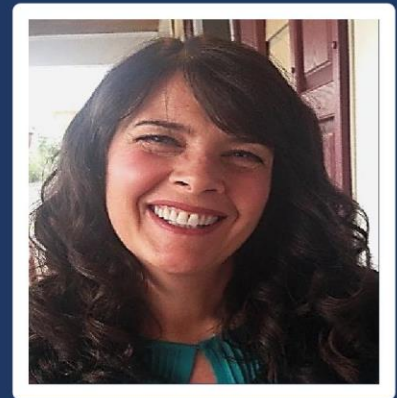
Richard Perro
Spiritual Advisor
Numerologist



Tsao-Lin E. Moy, L.Ac.,
MSOM Integrative Healing
Arts Master/Oriental Healing
Medicine



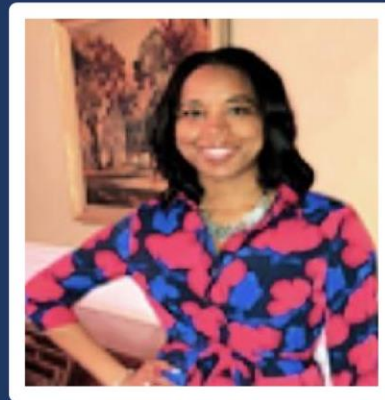
Tammy Web
Goodwin College
Sports Psychology Expert



Debbie Peterson
Wellness Gala
Founder & CEO



Joan Herrmann
Change Your Attitude,
Change Your Life
Host & Executive Producer



Monica Pope, MPA
New Jersey Superior Court
Child Welfare Advocate