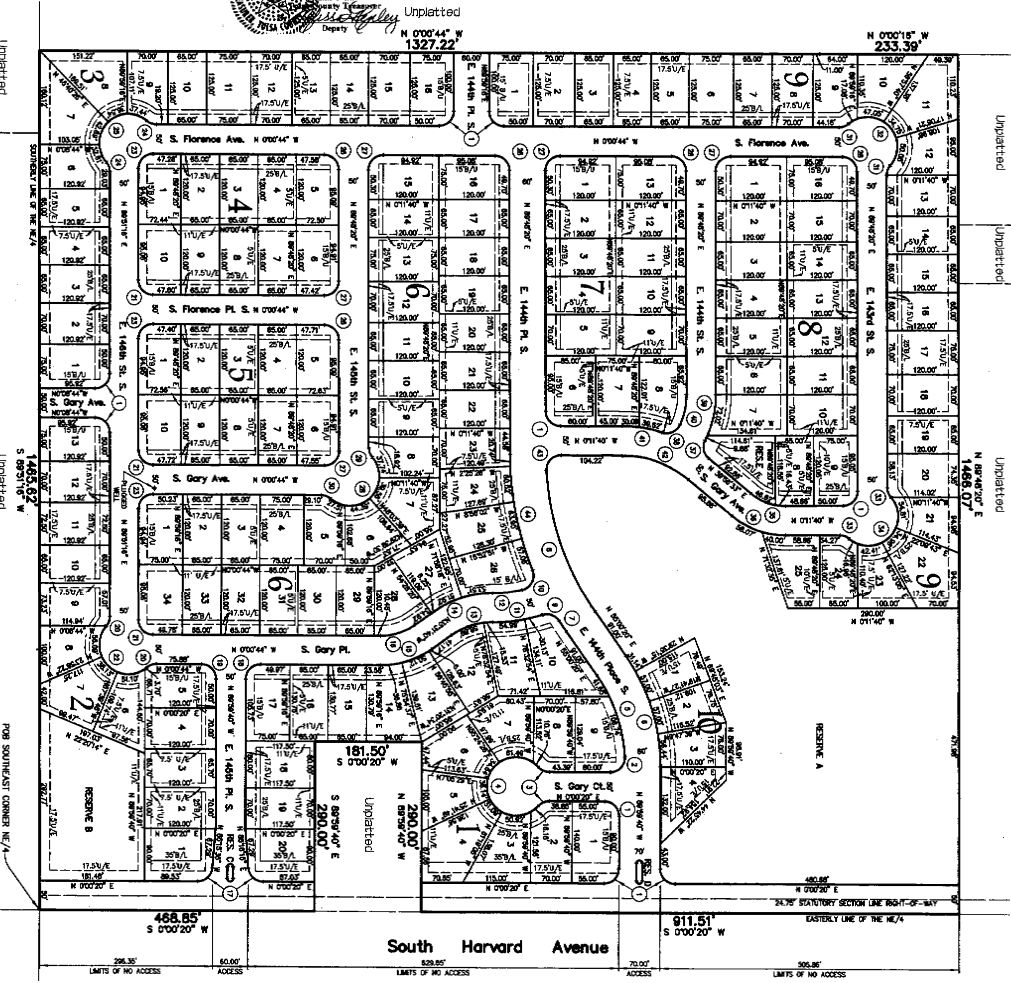


The Reserve at Harvard Ponds

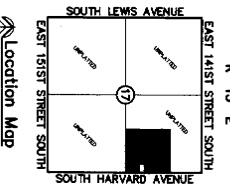
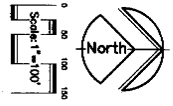
PART OF THE NE 1/4 OF SECTION 17, TOWNSHIP 17 NORTH, RANGE 13 EAST
 AN ADDITION TO THE CITY OF BIRBY, TULSA COUNTY, OKLAHOMA

Block	Street Address	Block	Street Address
Block 1	14401 S. GARY PL.	Block 17	3115 E. HARVARD BL.
Block 2	14402 S. GARY PL.	Block 18	3116 E. HARVARD BL.
Block 3	14403 S. GARY PL.	Block 19	3117 E. HARVARD BL.
Block 4	14404 S. GARY PL.	Block 20	3118 E. HARVARD BL.
Block 5	14405 S. GARY PL.	Block 21	3119 E. HARVARD BL.
Block 6	14406 S. GARY PL.	Block 22	3120 E. HARVARD BL.
Block 7	14407 S. GARY PL.	Block 23	3121 E. HARVARD BL.
Block 8	14408 S. GARY PL.	Block 24	3122 E. HARVARD BL.
Block 9	14409 S. GARY PL.	Block 25	3123 E. HARVARD BL.
Block 10	14410 S. GARY PL.	Block 26	3124 E. HARVARD BL.
Block 11	14411 S. GARY PL.	Block 27	3125 E. HARVARD BL.
Block 12	14412 S. GARY PL.	Block 28	3126 E. HARVARD BL.
Block 13	14413 S. GARY PL.	Block 29	3127 E. HARVARD BL.
Block 14	14414 S. GARY PL.	Block 30	3128 E. HARVARD BL.
Block 15	14415 S. GARY PL.	Block 31	3129 E. HARVARD BL.
Block 16	14416 S. GARY PL.	Block 32	3130 E. HARVARD BL.

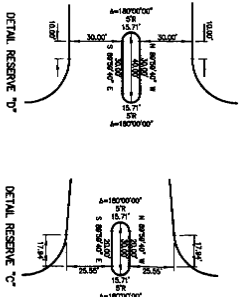
CERTIFICATE
 I hereby certify that all real estate taxes involved in this plat have been paid as reflected by the current tax roll. Security as provided has been provided in the amount of \$ 500.00 per trust receipt no. 6028 to be applied to 20 04 taxes. This certificate is NOT to be construed as payment of taxes. If taxes in full but is given in order that the plat may be recorded. 20 04 taxes may exceed the amount of the deposit.
 Witness my hand and the seal of my office this 13th day of October 2004.
 Earlene Wilson, County Clerk



FINAL PLAT
 I HEREBY CERTIFY THAT THE PART HEREIN REPRESENTED IS A TRUE AND CORRECT COPY OF THE ORIGINAL RECORD OF THIS PLAT AS FILED IN THE PUBLIC RECORDS OF TULSA COUNTY, OKLAHOMA, ON THIS 13TH DAY OF OCTOBER 2004.
 EARLENE WILSON, COUNTY CLERK



Scale of Bearings
 THE BASIS OF BEARINGS IS AN ASSUMED BEARING OF SOUTH 00°00' WEST ALONG THE EASTLY LINE OF SECTION 5 NORTHWEST 1/4, TOWNSHIP 36 NORTH, RANGE 18 WEST (1/4) SECTION, TULSA COUNTY, OKLAHOMA.



OWNER:
Spartan Development, LLC.
 AN OKLAHOMA LIMITED LIABILITY COMPANY
 14850 South Harvard
 Bixby, Oklahoma 74008
 Phone: (918) 366-2828

SURVEYOR:
Tanner Consulting, LLC.
 5323 South 7th Avenue
 Tulsa, Oklahoma 74105
 Phone: (918) 745-9929

STATE OF OKLAHOMA
 COUNTY OF TULSA
 I, **Earlene Wilson**, County Clerk, do hereby certify that this plat is a true and correct copy of the original record of this plat as filed in the public records of this county, Oklahoma, on this 13th day of October 2004.
 Earlene Wilson, County Clerk



