

Unified Communication Hub

Centralizes all communication across field operations, remote sites, and corporate control centers—ensuring no message is lost during critical moments..

Real-Time Crisis Monitoring

Executives, safety officers, and control room teams can monitor events as they unfold—even remotely or offline.

Built for Critical Environments

Optimized for speed, clarity, and low-latency communication under extreme conditions —

GLOBAL CRISIS COMMUNICATION TOOL GCCT

Empowering rapid, coordinated, and transparent crisis response for critical energy operations.



WHY GCCT

- Actively used across all regions where the company operates
- Designed for a small group of key users, ensuring rapid and focused decision-making
- Intuitive, responsive, and easy to navigate — even under extreme stress
- Provides full traceability of crisis actions and communications
- Supports structured post-crisis reporting and review

Disaster Risk Management Concept

In times of crisis, clear, accurate, and timely communication is critical. Our software is a specialized communication and activity logging tool designed to support effective crisis management. It enables teams across multiple locations to seamlessly record and track all communications and operational activities in real time.

Built to support high-pressure environments, GCCT ensures that every message, decision, and action is documented and accessible. Whether coordinating emergency services, managing internal incident responses, or handling large-scale disruptions, the system provides a centralized hub for communication and activity tracking.

Dual Logbook System

Practice Log: For training and drills
Operational Log: For real-time events
Every actn and communication is recorded for future reference and review.

Post-Crisis Reporting

Automatically generated reports based on logs, ideal for debriefing, audits, and future planning.

Critical Usability Focus

Though used by a small group of key individuals, GCCT is optimized for responsiveness and clarity, especially under pressure.

For more information please visit us on the Web at:

www.soulco-codecraft.com

GCCT Features and Benefits



Developed with deep insight into the challenges of emergency management, **GCCT is more than a tool—it's a strategic asset.** Whether you're responding to a local emergency or a global crisis, GCCT ensures your organization is **ready, aligned, and effective.**

A **mission-critical platform** that supports disaster preparedness, real-time crisis handling, and comprehensive recovery documentation.

Organizational Benefits

- Faster and more coordinated crisis response
- Transparent and traceable communication
- Simplified training via practice mode logs
- Automatic reporting for audits, debriefings, and lessons learned
- Centralized system that connects executives and operations seamlessly

SERVICES AVAILABLE

- Technical Support
- Custom Implementation according to customer need.
- Cloud based solution
 - Highly secured
 - High availability
 - Maintenance free

www.soulco-codecraft.com



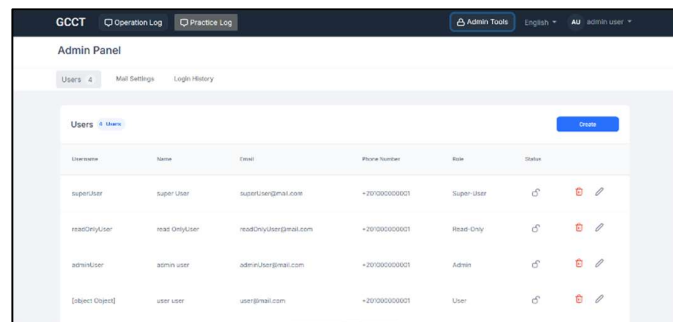
SOULCO CODECRAFT
Craft Codes with Soul

GCCT Main functions

Admin Panel – User Management

The **Admin Panel** allows full control over user roles and system settings:

- View, create, edit, and remove users
- Assign different access levels (Super-User, Read Only, Admin, User)
- Track login history and manage system notifications.



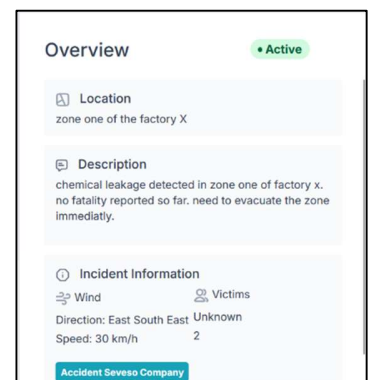
The screenshot shows the GCCT Admin Panel interface. At the top, there are tabs for 'Operation Log' and 'Practice Log', and a user profile for 'Admin User'. The main section is titled 'Admin Panel' and has sub-tabs for 'Users' (4), 'Mail Settings', and 'Login History'. The 'Users' tab is active, displaying a table of users with columns for Username, Name, Email, Phone Number, Role, and Status. There are icons for adding, deleting, and editing users. The table lists four users: superUser, readOnlyUser, adminUser, and user user.

Username	Name	Email	Phone Number	Role	Status
superUser	super user	superUser@gmail.com	+201000000001	Super-User	Active
readOnlyUser	read Only user	readOnlyUser@gmail.com	+201000000001	Read-Only	Active
adminUser	admin user	adminUser@gmail.com	+201000000001	Admin	Active
[object Object]	user user	user@gmail.com	+201000000001	User	Active

- ◆ Ensures secure, role-based access to sensitive crisis information.

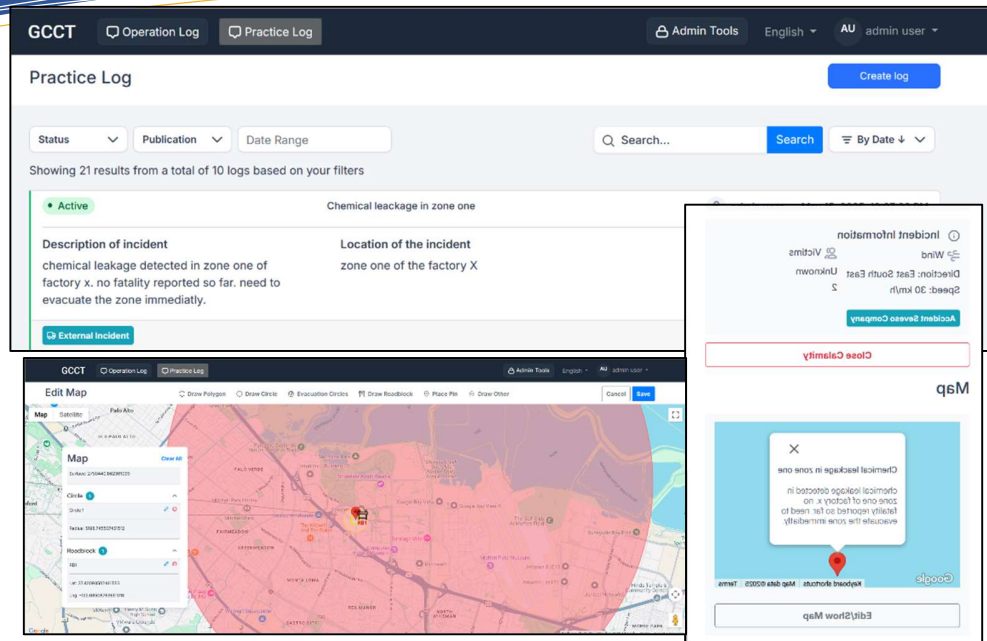
Log Detail – Real-Time Communication Record

- During a crisis, all communications are captured in the **Log Detail View**:
- Real-time exchange of information between users
- Communication threads tied to specific incidents
- Filters to quickly access messages by users or type.



The screenshot shows the 'Overview' section of the Log Detail View. It includes a status indicator 'Active' in a green circle. The 'Location' section shows 'zone one of the factory X'. The 'Description' section contains text about a chemical leakage. The 'Incident Information' section lists 'Wind' direction and speed, and 'Victims' count. At the bottom, there is a button labeled 'Accident Seveso Company'.

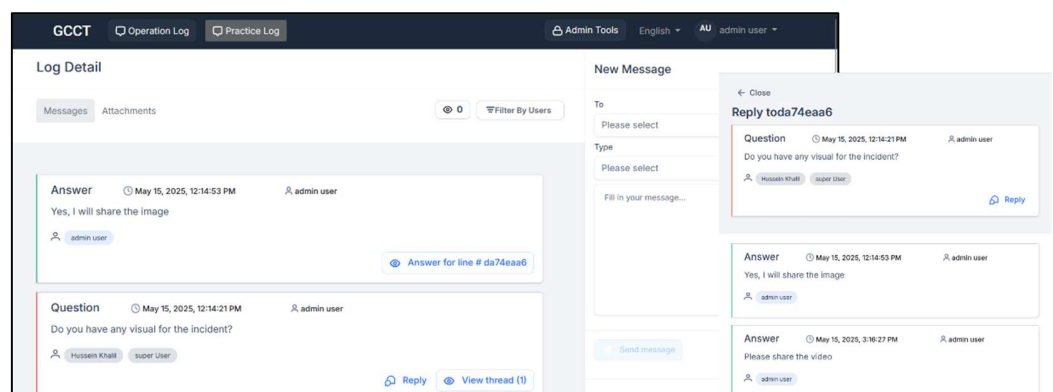
Overview	
Location	zone one of the factory X
Description	chemical leakage detected in zone one of factory x. no fatality reported so far. need to evacuate the zone immediatly.
Incident Information	
Wind	Direction: East South East Speed: 30 km/h
Victims	Unknown 2
Accident Seveso Company	



- ◆ All activities are logged and timestamped to enable full post-crisis

Threaded Messaging – Clear Communication Threads

- Detailed **message threads** help teams:
- Track back-and-forth communication
- Clarify who responded and when
- Understand the progression of actions and decisions



- ◆ Improves collaboration and accountability during high-pressure situations.