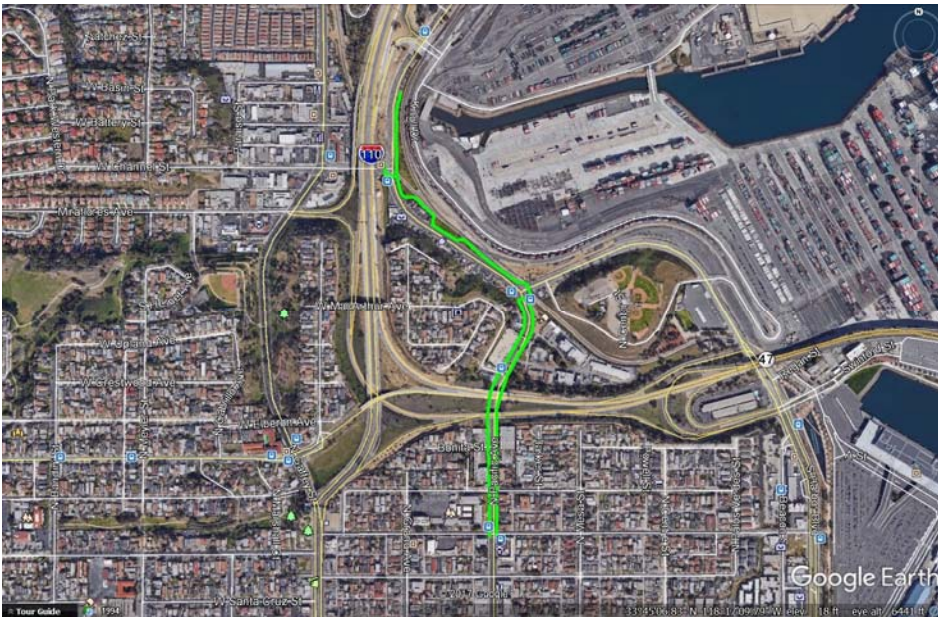
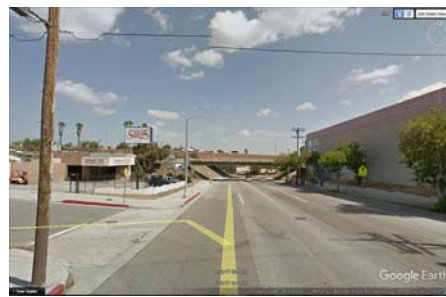


## OPPORTUNITY #12 - N. PACIFIC TO JOHN S. GIBSON BICYCLE PARKWAY CONNECTION



This opportunity is designed to close the gaps between existing and/or planned bike/pedestrian pathways along N. Pacific Ave. from O'Farrell St. north to Channel St. This would connect to existing bike lanes along N. Pacific Ave. at O'Farrell St. It would also connect to the existing pedestrian path that runs on the northeast side of N. Pacific Ave. from Channel St. to where it ends just north of the Front St.-N. Pacific Ave. intersection.

There is also ample opportunity to beautify the section of N. Pacific Ave. from O'Farrell St. to Front St. with street tree plantings. It would appear that the sidewalks along both sides of N. Pacific Ave. in this segment are wide enough to create con-



crete cut-outs to accommodate large stature trees. We would recommend creating at least 5 ft. x 10 ft. cut-outs and then plant these with Canary Island Pines. The photos on this page show some views of this pathway. The underpass also provides an opportunity for a mural.

