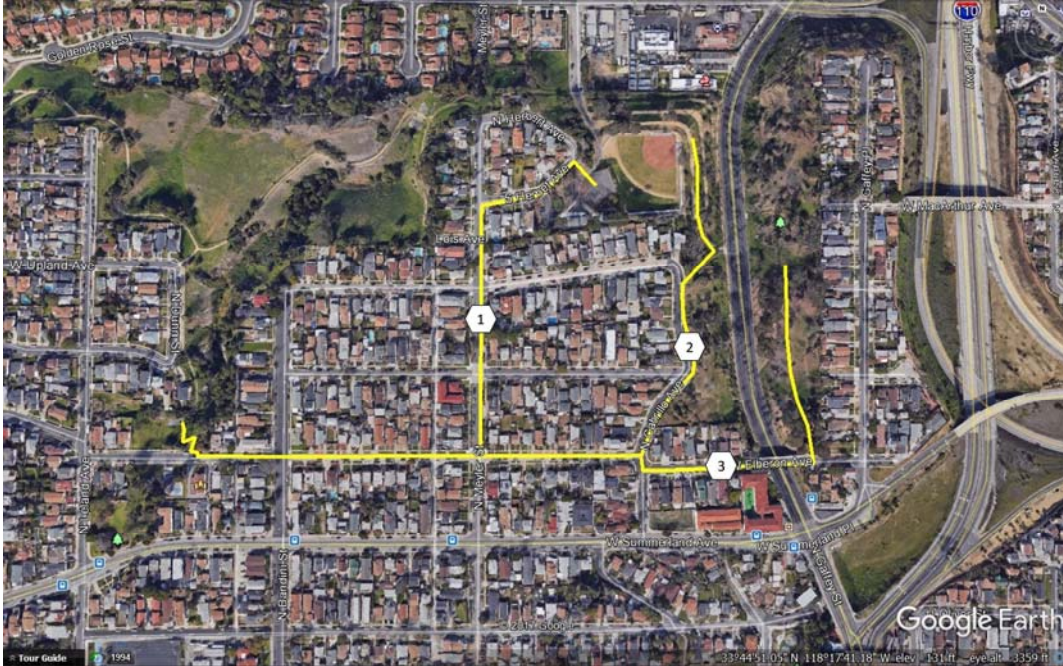


## OPPORTUNITY #15 - PECK PARK TO LELAND PARK PEDESTRIAN PATHWAYS

The opportunity here is to create a pedestrian pathway between Peck Park and Leland Park. Although the eastern boundary of Peck Park and western boundary of Leland Park are, in fact, very close, there currently is no continuous path connecting the two parks. Due to existing land ownership issues at other potential connection points, some closer linkages between the two parks do not appear feasible.



Therefore, the proposal is to link the south entrance of Peck Park at W. Elberon Ave. just west of N. Bandini St. to Leland Park at three (3) different locations (SEE CALL-OUTS ON MAP TO LEFT):

1. The first path would follow Elberon to Meyler St. and then proceed north to S. Herbert Ave. where it will veer east to the west entrance of Leland Park at the active play area.

2. The second path would continue east on Elberon past Meyler St. to Cabrillo Ave. and then turn north to the currently unimproved portion of Leland Park south of the developed portion of the park. A new improved trail would need to be added in this portion of Leland Park to connect to the terraces downhill from the ballfield on the approach to Miraflores Ave.
3. The third path would continue east past Cabrillo Ave. across the W. Elberon Bridge over N. Gaffey St. to Leland Park East. This portion of the park is used by joggers and people to walk their dogs; however, there is also ample opportunity to work with the existing Leland Park Advisory Board (PAB) to develop ideas for improvements to this section of Leland Park.

As an added value these various pathways would connect to other proposed pathway opportunities— Opportunity #13—the Peck Park to Bandini Canyon Park pedestrian and bicycle pathway and Opportunity #18—the proposed sidewalk along N. Gaffey St. from the Elberon Bridge to Miraflores Ave.