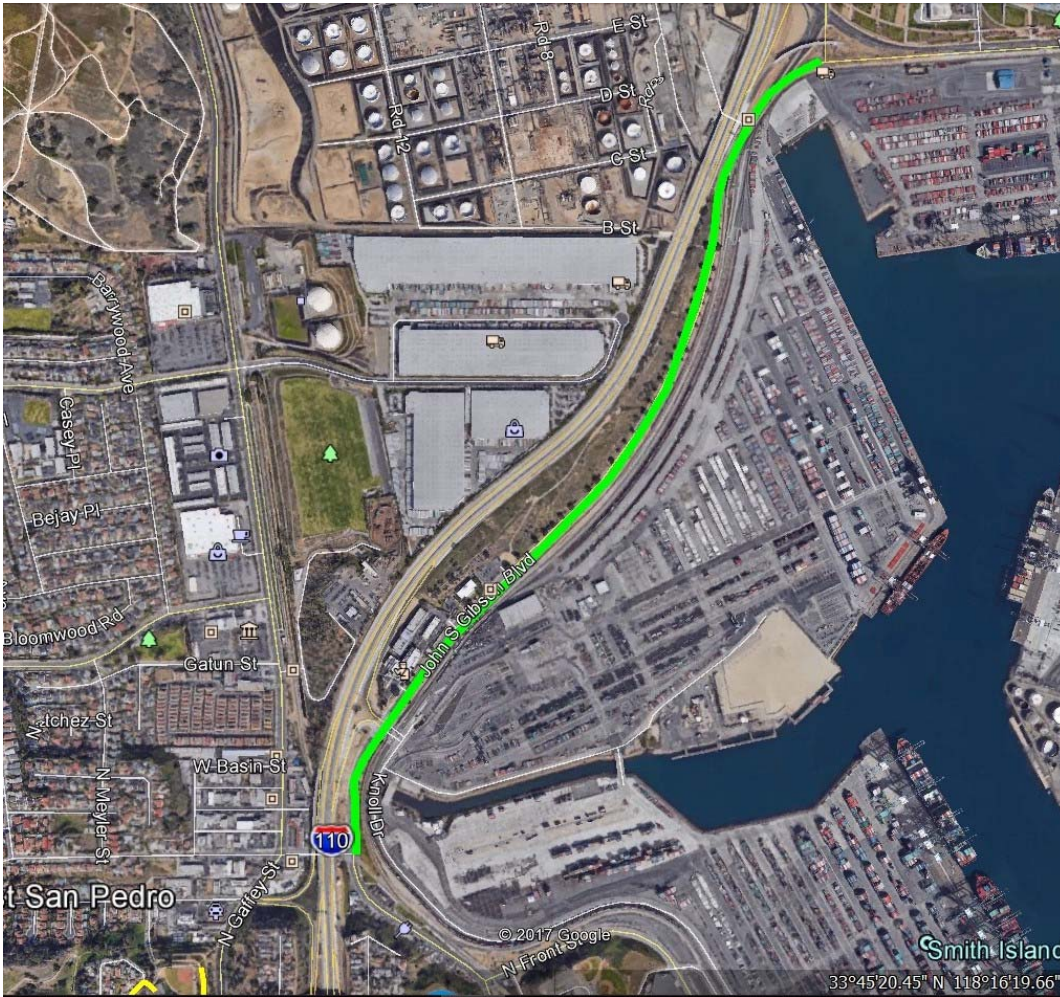


OPPORTUNITY #13 - JOHN S. GIBSON PARKWAY ENHANCEMENT



While John S. Gibson is a designated scenic highway that has existing bike lanes on both sides of the street and a number of trees planted in sidewalk cut-outs, especially on the east side of the street, there remains ample opportunity for significant environmental and aesthetic improvement between Channel St. and Harry Bridges Blvd. This is especially true now that the various Interstate 110 ramp construction improvements have been completed.

This opportunity dovetails nicely with the proposed bike lane connections shown in Opportunity #11 that will provide the much needed connections to N. Pacific Ave. from the existing parkway/greenway improvement just north of where N. Pacific Ave. intersects Front St. The

goal should be to create a “green screen” along the east side of John S. Gibson Blvd. that will also provide a “shaded parkway” for both bicyclists and pedestrians jogging or walking along this stretch of the Boulevard. As part of this enhancement, it is recommended that street trees along John S. Gibson receive regularly scheduled pruning utilizing local private community-based resources.

While some trees have been planted along the Caltrans right-of-way as part of the Interstate 110 ramp improvements there is still ample opportunity for additional tree planting, especially on the west side of John S. Gibson and within the median. This would include hillside areas that are on Port of Los Angeles property.

It is recommended that the remaining chain link fence at the northwest corner of Channel and John S. Gibson be removed and the area fully landscaped. This scenic highway would also be greatly enhanced by undergrounding the utilities along it.

This project should be eligible for State Resources Agency Environmental Enhancement & Mitigation Program (EEMP) funding beginning with the 2018/19 grant cycle.

