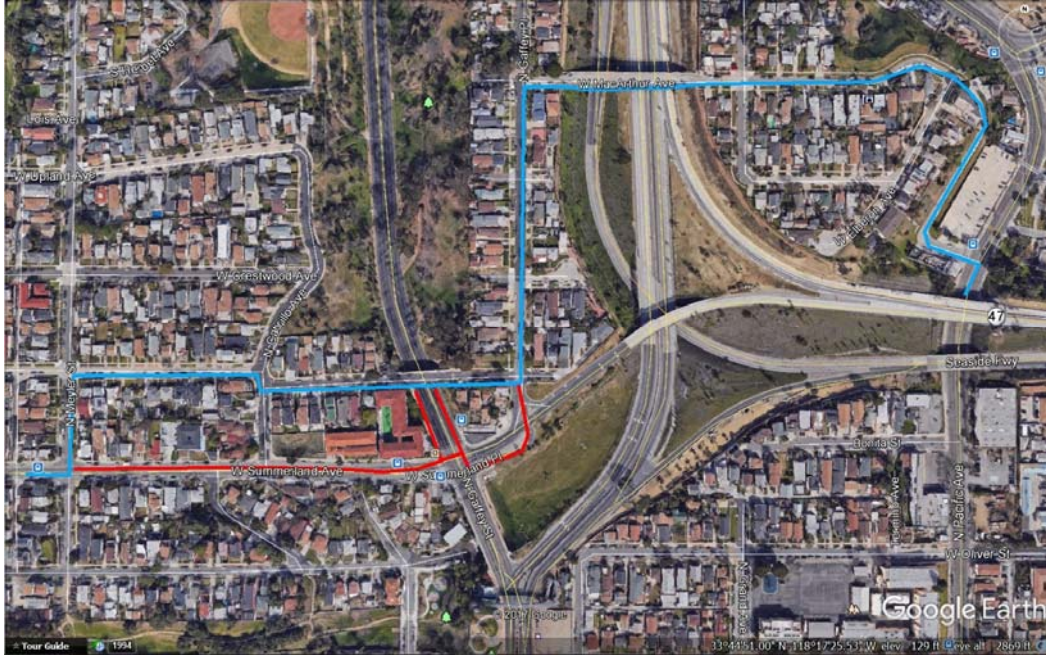


OPPORTUNITY #16 - SUMMERLAND TO GAFFEY & PACIFIC BIKE CONNECTIONS

The opportunity here is to create bicycle, as well as enhanced pedestrian, path connections between the end of the bicycle lanes on W. Summerland Ave. just east of Meyler St. and the existing bicycle paths on N. Gaffey St. and the proposed new bicycle path extension on N. Pacific Ave. The blue lines on the adjacent map show the W. Summerland to N. Pacific pathway connection, while the red lines show the W. Summerland to N. Gaffey St. connection.



N. Pacific pathway connection, while the red lines show the W. Summerland to N. Gaffey St. connection.

First, let's look at the Summerland to N. Pacific pathway. There are actually two (2) different alternative routes proposed to accomplish this. The blue-lined path would direct cyclists to turn left at Meyler St., go north to Elberon Ave. and then head east along Elberon Ave. over the bridge to N. Gaffey Pl. Then the route

would proceed north to McArthur Ave. over the bridge at the 110 Freeway, and wind down the hill to W. Upland Ave. to N. Pacific Ave. At this point the cyclist could proceed south on the proposed southbound bicycle lane along N. Pacific Ave. (Opportunity #11) and eventually turn at 6th or 7th Street into Downtown San Pedro and continue on to the Port of LA as desired, or, of course, continue south on Pacific Ave. beyond those streets towards the San Pedro Coastal Area. As the residential streets along this pathway are not wide enough to create a dedicated bike lane, this pathway would be designated a bicycle route with wayfinding signage to assist with directions.

Now let's look at the red-lined pathway. This functions as both an alternative connector from the end of the W. Summerland bike lanes just east of Meyler to the blue-lined pathway that goes from N. Gaffey Pl. to N. Pacific Ave., and as a separate connector to the existing bike lanes at N. Gaffey St. As with the blue-lined pathway there is not enough room for a dedicated bike lane; however, this portion of the pathway could be designated a bike route with wayfinding signage to both the N. Pacific bike lanes and the N. Gaffey bike lanes.

As an added value, both of these alternative pathways connect to the proposed pedestrian pathways between Peck Park and Leland Park, as well as the proposed pedestrian pathway between Peck Park and Bandini Canyon Trail.