

Rybka Hardware is there when you're at the end of your rope. Quality hardware supplies for since 1946. Keeping the residents and contractors from all over the region building and repairing their properties.

This kit is a beautiful representation of an old school hardware store. It can be built easily in a few nights. Take your time and enjoy the process. You can build it into Rybka's or use your imagination to see what you can come up with for your railroad!

Tools & Supplies

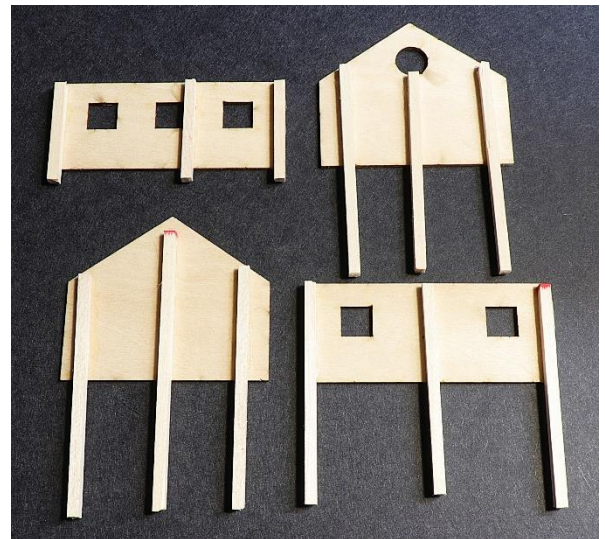
- | | | |
|--------------------------------------|----------------------------|--------------------|
| ✓ Hobby knife, with a 11 Xacto Blade | ✓ 1-2-3 blocks (optional) | ✓ Paints & Brushes |
| ✓ Fine File | ✓ Small magnets (optional) | ✓ Tweezers |
| ✓ Square & Ruler | ✓ NWSL Chopper (optional) | ✓ Patience |
| ✓ Pounce tool or T-Pin/Needle | ✓ PVA glue or wood glue | ✓ Fun |
| | ✓ Cyanoacrylate glue (CA) | |

Pre-assembly

1. Inspect all sheets of laser cut materials against the diagrams provided in the instructions, checking for any missing pieces or damaged parts. Please reach out to us with any issue.
2. Before starting your model, read through these instructions completely to become familiar with the parts and assembly sequence.

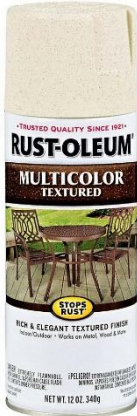
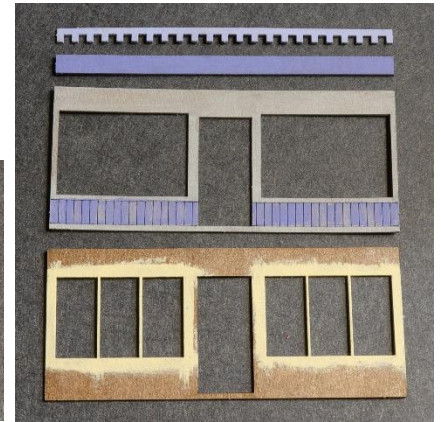
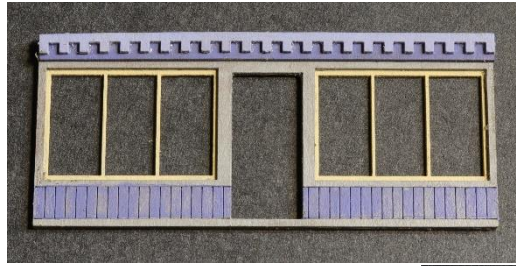
Bracing & Corner Molding

3. In the kit we provide 1/8"x1/8" stripwood (**RED** tip) to brace the backside of the clapboard pieces. Remove parts #1-4 from clapboard sheet. Cut the 1/8" stripwood to fit on the smooth side of the parts. Reference the parts list for bracing location.
4. We suggest you paint the walls and corner molding your desired color before adding the corner molding. Add the corner molding using the 1/16"x1/16" stripwood (**GREEN** tip) provided in the kit. The 4 corner moldings are glued to the sides of parts# 1,2. Cut the 1/16" corner molding about 1/8" longer than the edge of the wall that it will be glued to. Use 1-2-3 blocks or other squared weights to hold it in place while the glue dries. Trim the corner molding flush to top and bottom edges of walls.

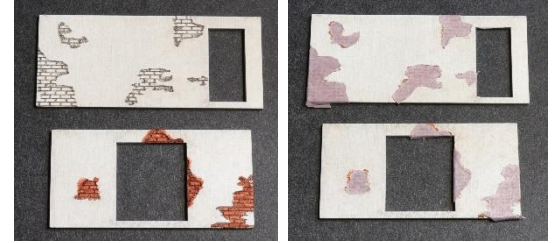


Main Building

5. The main building has a “masonry” first floor. Start by assembling the decorative store front. It is created by layering parts #5,6,7,8. We suggest painting the parts before assembly to achieve crisp lines. #5 is the base. Then place #6 on top, making sure the scribed lines face up. You can add more layers of detail by using # 7 & 8 for the dental molding on the top of the wall.



6. For the other 3 walls you need parts #23,24,25. These parts have engraved brick pattern on them, and the rest is a smooth surface. We modeled this as an old, damaged stucco wall. Start by paint the brick areas and allow them to dry. Mask off the bricks with a painter's tape.



To achieve the look of stucco we use textured spray paint by Rustoleum #239121 Caribbean Sand. Apply 1-2 coats of the texture paint. You can leave the color as is, but we dry brushed a tan over it to add more depth. Once dry, remove the tape to reveal the brick.

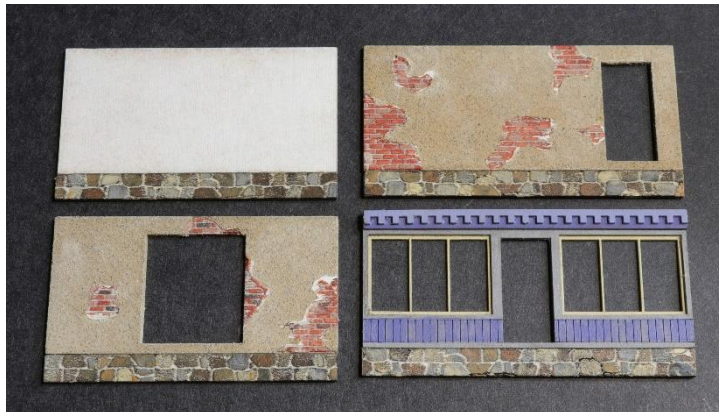


Scan me! foundation, paint the foundation using your color of choice. On our website we have a “Mine Mount Minute How-to” showing you how to paint random stone. It is an easy technique with great results. QR code to access.

8. With all the bottom floor parts prepared, it is time to assemble the foundations and walls. The two short foundations #30 are



glued to the bottom of walls 23 & 24. The long foundations #31 are glued to the bottom of # 25 and the store front assembly from step 5.



9. Now attach the 1st floor walls to the braced clapboard walls #1-4 from step 1. The peeked end walls are a little narrower than the stucco walls #23 & 24. Center them to each other.

10. This is the time you want to use 1-2-3 blocks and small magnets to assure the walls are glued together square. Start with part #3/25 back wall laying clapboard side down. Glue on the 2 short sides (parts #1/23, 2/24). Allow it to dry. Then lay down front wall assembly, clapboard side down. Flip over the assembly of parts #1,2,3 and glue the assembly to the edges of the front wall along the corner moldings. Again, square up walls using 1-2-3 blocks and magnets.



11. The left side addition is made from Board-n-Batten parts #9,10,11. Since the grain of the wood runs vertically on these pieces, be sure to adhere the 1/8" x 1/8" stripwood (RED tip) bracing horizontally. As shown on the bracing diagrams.



12. Again, stain and paint the front and back of the walls prior to adding the corner molding using the 1/16"x1/16" stripwood (GREEN tip). Then paint the molding piece and add them to edge of walls #9&11. Then trim the top and bottom to match the wall profiles.

13. Using the 1-2-3 blocks, glue the long walls #9,11 to the end wall #10.

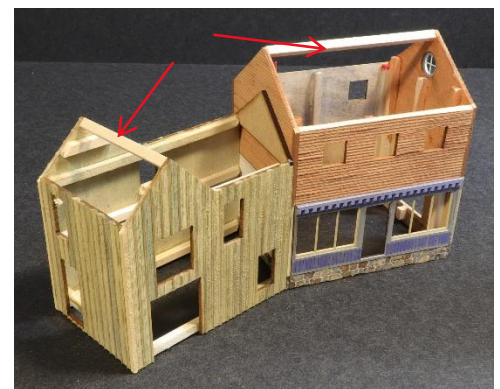


14. Add the spacer roof peak part #12 by lining the notch on #12 to the notches at the tops of #9&11. This squares up the assembly and adds support for the roof sheets in a later step.

15. Attach the addition assembly to the blank wall side of the main structure. The front edge of the addition should be even with the front corner of the main

structure. **OPTIONAL This assembly can be rearrange to be added to the back wall for a different look.**

16. Use two piece of 1/8" x 1/8" stripwood (RED tip) to create the roof ridge beams at the peak of both gables ends. These will support the roof sheet parts in a later step.



Windows & Doors

17. The windows are by Tichy Train Group. Just like any plastic kit, the plastic doors need to be washed off with mild dish detergent and warm water. Paint them with your desired color. There is a sheet of clear acetate that has the glazing for doors and windows already precut to the correct sizes.

18. Now just test fit them into the different openings, and glue them once happy with the fit. Use all the pictures provided to help with locations.

19. The small wooden door on the second floor of the addition is made with parts #21,22. Stain or paint them before assembly for clean lines.



Roof

20. Add the two roof panels parts #13,14 on top of the addition. A little fiddling may be needed to get them aligned.



21. Using 1/8" x 1/8" stripwood (**RED** tip) to make the ridge beam between #14 and #12. Part #14 has lines engraved on it to show you the center peak of the ridge, and part #12 has a notch on top to rest the one end of the beam into. This piece is a little tricky to cut the compound angles on the ends. Take your time. We suggest cutting the angles a little longer and then use a file to fit it to the correct size.



22. Now add the roof sheets #15,16 to the center section. The engraved lines on #14 will show you the angle they should rest at.

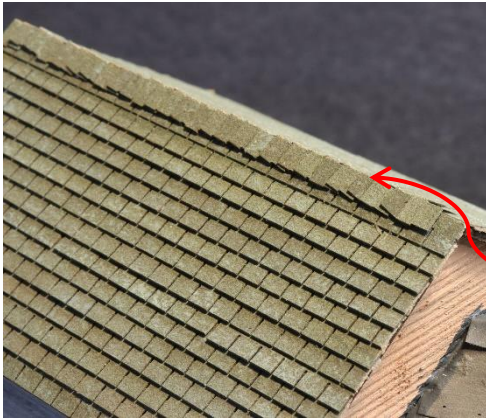
23. We painted the valley of this roof a grimy black color before applying the paper rolled roofing sheets. Also paint and weather the rolled roofing before applying. Start at the bottom edge, using the engraved lines on the roof as a guide, layer the strips with a slight overlap. Continue until you reach the top. Once both roofs are covered, cut one of the rolled roofing strips in half lengthwise. Use this thin strip as the ridge cap.



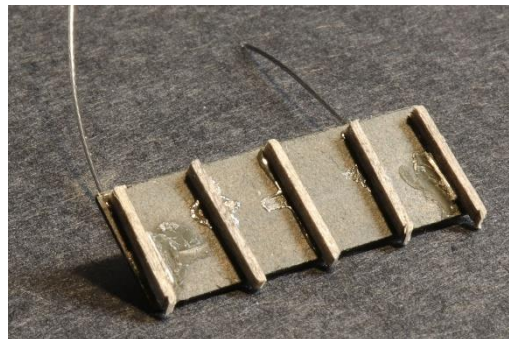
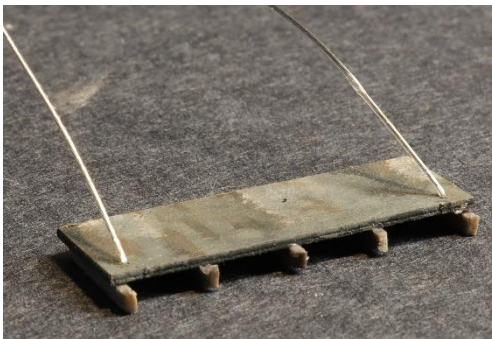
24. Moving onto the main roof, attach parts #17,18 with the engraved lines facing up. Be sure to center them so there are even overhangs on both sides. We use thin double stick tape used for weatherstripping windows. To adhere the shingle strips to the roof.
25. Now is a great time to paint and attach the 3-tab shingles to the main roof.

On our website there is a Mine Mount Minute how-to on painting convincing shingle colors, easily and quickly.

26. You can use double stick tape or glue to attach the strips of shingles. I prefer the double stick tape method. Start at the bottom of #17 and place the first strip slightly overhanging the bottom edge. The next row of strip shingles overlaps the previous row just above the vertical slots of each shingle. Keep the rows nice and straight (unless you want a worn and weathered roof).



27. To create the ridge cap, cut the strips of shingles into two tabs wide. Then bend them into a V-shape. Start at one end and glue these across the ridge. Be sure to half lap each shingle.
28. There are two small roof overhangs, One on each end of the structure. The first is a small roof above the door on the addition part #19. Add a few short pieces of 1/32" x 1/16" stripwood (BLUE tip) on the bottom like rafters. You can paint it or add weathered rolled roofing to it. The easy way to attach it is simply glue it to the wall with a slight pitch for rain runoff. A little more challenging but adds a lot of detail is to use the silver metal thread provided in the kit, and drill holes in the bottom corners of #19. Then drill two holes in the wall about 1/4 inch above the roof. Add small drops of CA glue underneath the roof and inside the building to hold it in place.



29. The large dock roof overhang is created with parts #20,26. The support brackets #26 x4 are evenly spaced on the bottom side of #20. Paint it your desired color and then add strips of rolled roofing.



Sidewalks, Docks & Stairs

30. The kit comes with a full base with sidewalks to attach the structure to. We painted and weathered the sidewalks before permanently glueing the building in place. We suggest carefully adding weigh on top of the model so that it dries flat to the base.



31. While the base dries it is time to assemble the two loading docks & stairs. The small wood dock for the back door is made

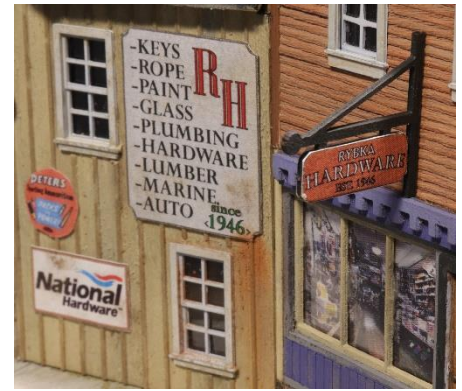
from parts #36,37. Stain them before gluing the legs #37 x2 to the bottom, non-scribed side of #36.

32. The large concrete dock for the double door end is parts #28 x2, 29. The two #28 are identical. We painted them separately before gluing them together. It makes it look like poured slabs to build up the height of the dock. The top of the dock is part #29 with scribed cracks and joints.
33. The small and medium sized stairs are resin details. Rinse them off with warm water and soap before painting them. These are versatile and can be placed in several places around the docks
34. The long tiered front stairs and created from parts #32.33.34.35. Glue them up like a pyramid, but make sure one long side is all flush with each other. We used a 1-2-3 block to help with this process.



Signs & Details

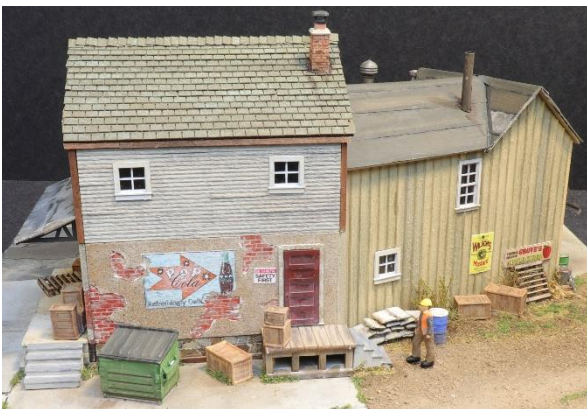
35. The kit comes with a variety of signs that can add life to your model. There are no specific spots for any of the signs. Cut them out with a new sharp hobby blade and glue them to the walls.
36. The one RYBKA Hardware sign sticks out from the wall on a bracket and mounting plate. This is part #27. Depending on your color choice for the build, there are a couple color schemes that can be added to both sides of the bracket. Then glue it to the wall above the main entrance door.
37. The resin detail parts should be rinsed off with warm soapy water and dried before painting. The straight roof vent and the brick chimney are installed by filing the bottoms to match the pitch of the roofs. Or you can drill or cut small holes for them to fit snugly in with glue. Glue them into the locations you like. Paint around the base with a grimy black color to simulate tar sealant. The trashcans, boxes, barrels and other resin details can be placed around the building and on the sidewalk where you see fit.
38. The one specific detail part is the hoist beam bracket and the cleats. These are painted and stalled above the wood crossbuck door under the peak of the roof of the addition. With the cleats, one next to the top door and the other near the bottom double door. There is a piece of natural twine to use as a lifting rope. Run this rope through the hoist pulley and wrap around each cleat and hold in place with a small drop of CA glue.
39. Other details we provide are a couple wooden pallets. There is a separate directions sheet to assemble them. The kit comes with qty 2 pallets. But you can get more packs of pallets at MineMountModels.com



The model will be complete at this point. Add as many details as you would like. Create a wonderful scene on your model railroad or diorama. We want to thank you for enjoying the building of **RYBKA Hardware**

. Please share your finished build by sending good quality pictures to info@MineMountModels.com and we will post them in the "Customer Build Gallery" section of our website. Also, check out our other products by visiting www.MineMountModels.com .

**Thank you,
Ron & Michelle**



Page left blank