

Pier 7 Food & Fuel is there when your boat and body are low on fuel. Premium gas and quality food are a hallmark of Pier 7. Keeping the residents and shipmen from all over the region fueled up and ready to go.

This kit is a beautiful representation of a waterfront multipurpose pier. It can be built easily in a few nights. Take your time and enjoy the process. You can build it into Pier 7 or use your imagination to see what you can come up with for your railroad!

Tools & Supplies

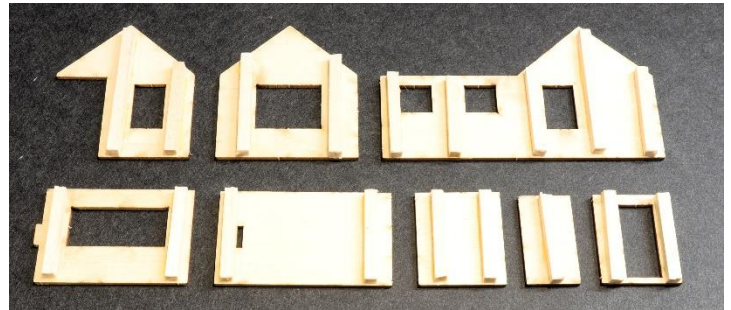
- | | | |
|--|----------------------------|--------------------|
| ✓ Hobby knife, with an #11 Xacto Blade | ✓ 1-2-3 blocks (optional) | ✓ Paints & Brushes |
| ✓ Fine File | ✓ Small magnets (optional) | ✓ Tweezers |
| ✓ Square & Ruler | ✓ NWSL Chopper (optional) | ✓ Patience |
| ✓ Pounce tool or T-Pin/Needle | ✓ PVA glue or wood glue | ✓ Fun |
| | ✓ Cyanoacrylate glue (CA) | |

Pre-assembly

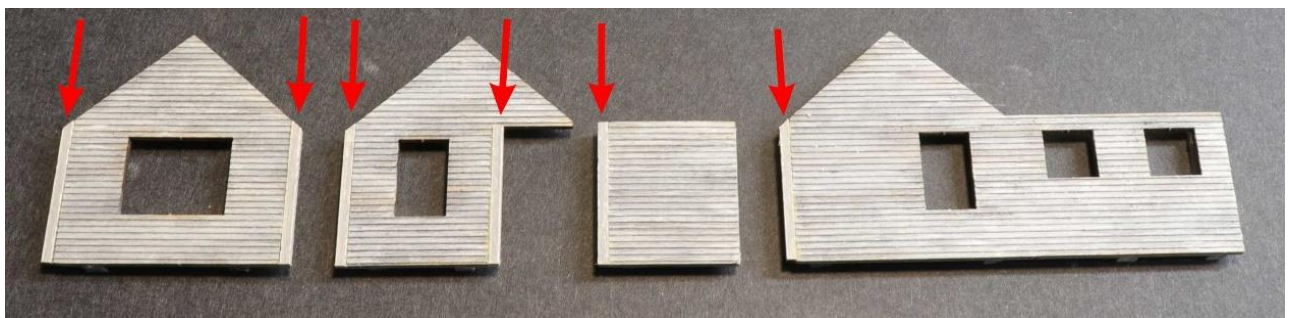
1. Inspect all sheets of laser cut materials against the diagrams provided in the instructions, checking for any missing pieces or damaged parts. Please reach out to us with any issue.
2. Before starting your model, read through these instructions completely to become familiar with the parts and assembly sequence.

Bracing & Corner Molding

3. In the kit we provide 1/8"x1/8" stripwood (**RED** tip) to brace the backside of the clapboard pieces. Remove parts #1-8 from clapboard sheet. Cut the 1/8" stripwood to fit on the smooth side of the parts. Reference the parts list for bracing location.

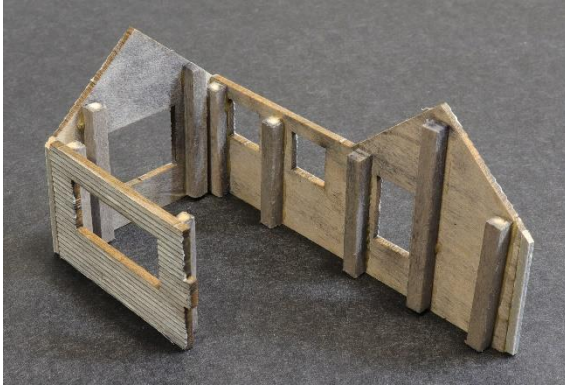


4. We suggest you paint the walls and corner molding your desired color before adding the corner molding. Add the corner molding using the 1/16"x1/16" stripwood (**GREEN** tip) provided in the kit. The 6 corner moldings are glued to the sides of parts# 1,2,5,8. Cut the 1/16" corner molding about 1/8" longer than the edge of the wall that it will be glued to. Use 1-2-3 blocks or other squared weights to hold it in place while the glue dries. Trim the corner molding flush to top and bottom edges of walls.

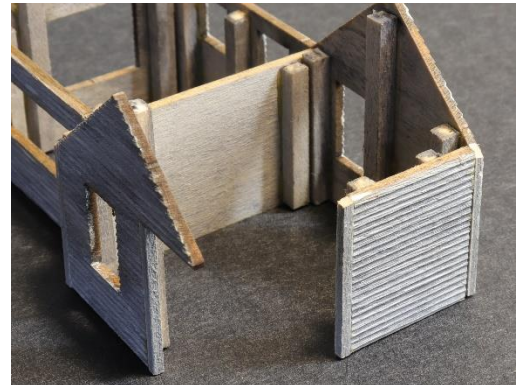
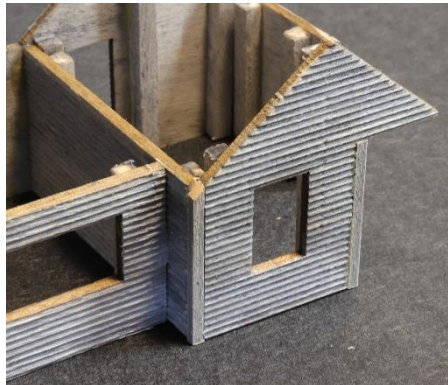


Main Building

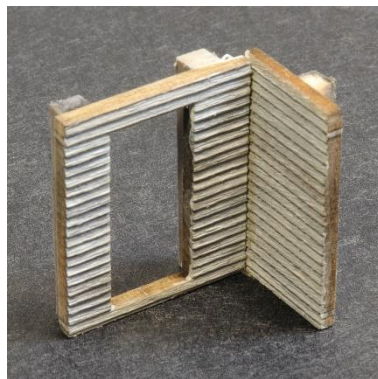
5. Start assembling the main building with parts #1-. This is the time you want to use 1-2-3 blocks and small magnets to assure the walls are glued together square. Glue #1&3 to the ends of #2 short sides. Allow it to dry. Then fit part #4 in between 1&3. The tab and slot on 3&4 will line up. Again, square up walls using 1-2-3 blocks and magnets.



6. The next walls to add are parts #5&8. Wall #5 is glued to the end of #4. And wall #8 is glued to the corner post of #1.



7. Glue parts #6&7 in the configuration shown in the picture.
8. Insert the 6&7 wall assembly into the open between #5&8.
9. At this time take a few minutes and file the top edge of #8 to match the angle of the roof.



10. Use a piece of 1/8" x 1/8" stripwood (RED tip) to create the roof ridge beam at the peaks of #1&5. (LEFT)

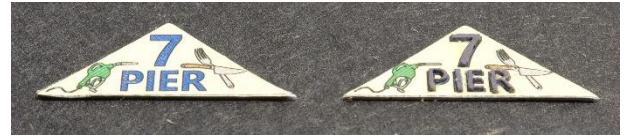
11. Add the small panel part #13 on top of #6/7 to create a ceiling. (RIGHT)



12. I find it easier to stencil on the “GAS” sign before adding the roofing and windows. The structure lays flat on your work surface. Use the stencil provided. Tape it on your desired location. I recommend applying a few light passes of paint instead of a single heavy coat.



13. You can apply the “Pier 7” wall signs at this time, too. They are made from parts #19 triangles and the printed triangle signs on the Bracing & Schematics sheet. You can make a simple plain paper sign or add the “PIER 7” cut letters next to #19. They give a 3 dimensional look to the signs. The larger “7” is glued to the peak of #2 gable end.



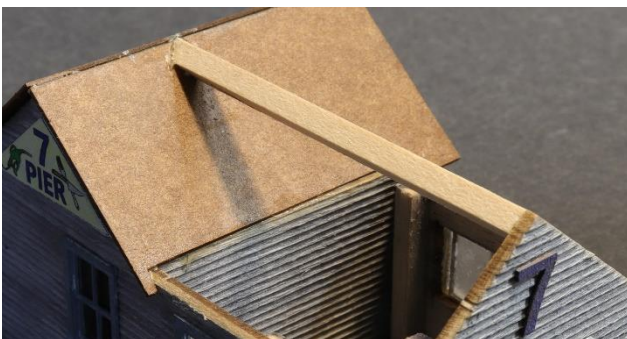
Windows & Doors

1. The windows are by Tichy Train Group. Just like any plastic kit, the plastic doors need to be washed off with mild dish detergent and warm water. Paint them your desired color. There is a sheet of clear acetate that has the glazing for doors and windows already precut to the correct sizes.
2. Now just test fit them into the different openings, and glue them once happy with the fit. Use all the pictures provided to help with locations.
3. The three-pane service window is made from parts #28,29, require a little more construction. **Again, the kit offers two options for the window. They can be built in the closed or open position** Add the three clear glazing prior to assembling the pieces.



Roof

4. Add the two roof panels parts#9,10 on top of the wall sections that the ridge beam was added. A little fiddling may be needed to get them to align. (RIGHT)



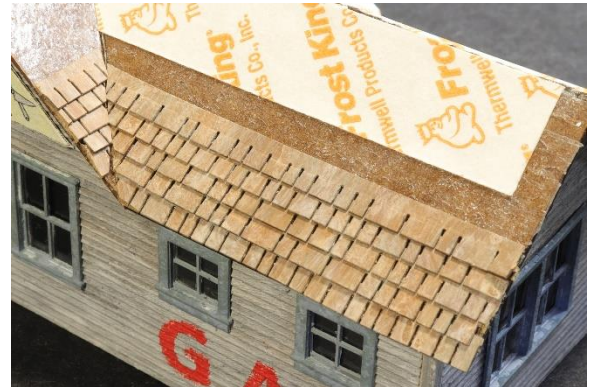
5. It is time to add another ridge beam 1/8” x 1/8” stripwood (RED tip) between the #2 peak and the #10 roof. We engraved the triangular lines on #10 to guide you where the center should land. Cut the length slightly longer. Then file a bevel to the end that rests on #10. Glue into place once satisfied with the fit. (LEFT)



6. Glue on the roof parts #11,12. Again, you might have to fiddle a bit to line them up.
7. Now is a great time to paint and attach the straight edge shake shingles to the main roof.

On our website MineMountModels.com is a Mine Mount Minute how-to on painting convincing shingle colors, easily and quickly.

8. You can use double stick tape or glue to attach the strips of shingles. I prefer the double stick tape method. Start at the bottom of the roof lines and place the first strip slightly overhanging the bottom edge. The next row of strip shingles overlaps the previous row just above the vertical slots of each shingle. Keep the rows nice and straight (unless you want a worn and weathered roof).

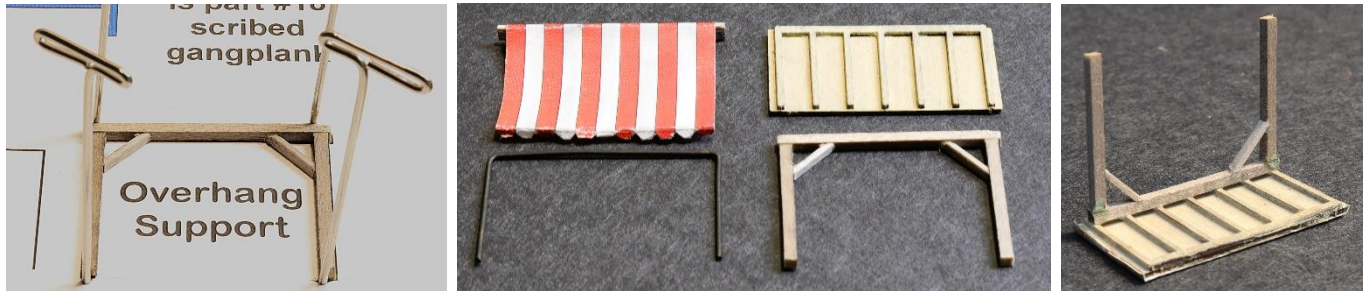


9. When the shingles reach the intersection of the roof valleys, cut angles to match the pitch of the roof. Now continue adding the shingles to the peak of the roof.
10. With the shingles installed on both sides of the roof, you can add the ridge cap shingles to the peak. Take your painted strips of shingles and cut a bunch of them into 1/4" long pieces. Fold these pieces in half to fit over the peak. Start on one end of the roof and layer the small ridge cap pieces across the length. It is overlapping the strips on the main roof going horizontally.



11. Now is a good time to add 1/32"x1/16" stripwood (BLUE tip) to the three gable ends, under the roof lines.

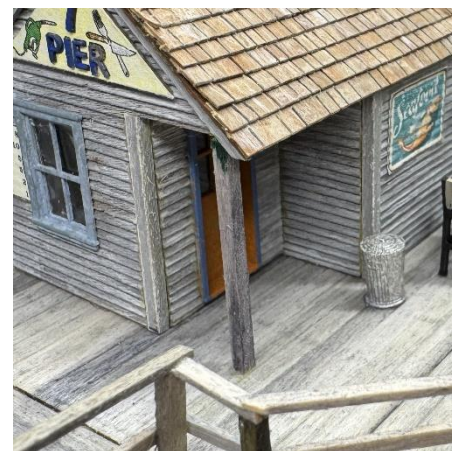
12. The other two small roofs have different overhangs. The red & white striped awning is created using the printout on the Signs sheet, a length of 1/32"x 3/32" stripwood (PURPLE tip), and the 1/32" BRASS rod. Bend the brass rod to match the schematic on the sign sheet. You can adjust the length of the arms depending on how open you want your awning. The stripwood is glued to the top edge, back side of the awning. It helps hold the assembly to the building. Providing a rigid surface to glue.
13. The wooden overhang is used over the service window. The roof section is made from parts #20,21. The support beams are created with 1/32"x1/16" stripwood (BLUE tip) and 1/16"x1/16" stripwood (GREEN tip). Use the schematic and T-Pins to construct the legs and cross bracing



14. Paint and weather the paper sheet provided to make the tarpaper roof. Now add the rolled tarpaper sheets to the small roof #21.
15. Before attaching the overhangs, assemble the service counter for under the window on wall #3. It uses parts# 30,31.



16. The awning goes above the window on wall #2. The ends of the brass rod are glued on the wall about halfway from the top of the window. Create a slight curve to the red & white sheet. The wood overhang is glued above the service window on wall #3, just under the shingle line. The wood legs rest on the ground.
17. Add a support post at the corner of the doorway using 1/16"x1/16" stripwood (GREEN tip)



Signs & Details

18. The kit comes with a variety of signs that can add life to your model. There are no specific spots for any of the signs... except for the one MENU next to the service window.
19. The remaining signs can be cut out and applied to the walls by whatever technique you normally use.
20. The resin detail parts should be rinsed off with warm soapy water and dried before painting. The straight roof vent and the brick chimney are installed by filing the bottoms to match the pitch of the roofs. Glue them into the locations you like. Paint around the base with a grimy black color to simulate tar sealant. The trashcans and other resin details can be placed around the building and on the sidewalk where you see fit.
21. Other details we provide are some "rope". You can bundle it in spool or have it dangling from some of the railings.
22. More fun resin details are the seagulls and pigeons



23. *At this time, you want to go to the separate Pier Construction direction provided. All the other signs and details will be applied to the pier. Once completed, you can finish the last few steps of the PIER 7 Food & Fuel scene.



24. More details included are signage for around the pier pilings. Various signs, ladders, gas pumps, mounted marlins. Some signs are mounted to laserboard, then attached to pilings Parts #22,23,24,25 are some of these boards.



25. The flagpole is made from 1/16"x1/16" stripwood (GREEN tip) about 3 inches long, a length of the twine, and the printed double flag from the sign sheet.



The model will be complete at this point. Add as many details as you would like. Create a wonderful scene on your model railroad or diorama. We want to thank you for enjoying the building of Pier 7 Food & Fuel.

. Please share your finished build by sending good quality pictures to info@MineMountModels.com and we will post them in the "Customer Build Gallery" section of our website. Also, checkout our other products by visiting www.MineMountModels.com .

**Thank you,
Ron & Michelle**