

Utopia Cafe is a little slice of paradise. They are best known for their famous pies, but you can just as easily get a great breakfast, lunch, or dinner. Keeping the residents and visitors of Utopia, TX fed since just after the founders first set foot in the beautiful hamlet. They declared the town was an oasis from the heat of Texas... a true Utopia on Earth.

This kit is a beautiful representation of a small-town cafe. It can be built easily in a few nights. Take your time and enjoy the process. You can build it into Utopia or use your imagination to see what you can come up with for your railroad!

### Tools & Supplies

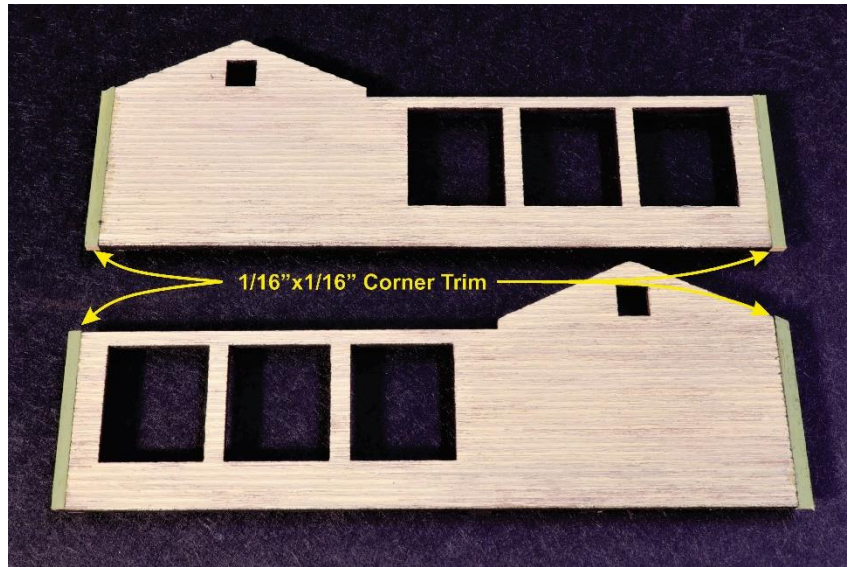
- |  |                            |                    |
|--|----------------------------|--------------------|
| ✓ Hobby knife, with an #11 Xacto Blade | ✓ 1-2-3 blocks (optional)  | ✓ Paints & Brushes |
| ✓ Fine File                            | ✓ Small magnets (optional) | ✓ Tweezers         |
| ✓ Square & Ruler                       | ✓ NWSL Chopper (optional)  | ✓ Patience         |
| ✓ Pounce tool or T-Pin/Needle          | ✓ PVA glue or wood glue    | ✓ Fun              |
|  | ✓ Cyanoacrylate glue (CA)  |                    |

### Pre-assembly

1. Inspect all sheets of laser cut materials against the diagrams provided in the instructions, checking for any missing pieces or damaged parts. Please reach out to us with any issue.
2. Before starting your model, read through these instructions completely to become familiar with the parts and assembly sequence.

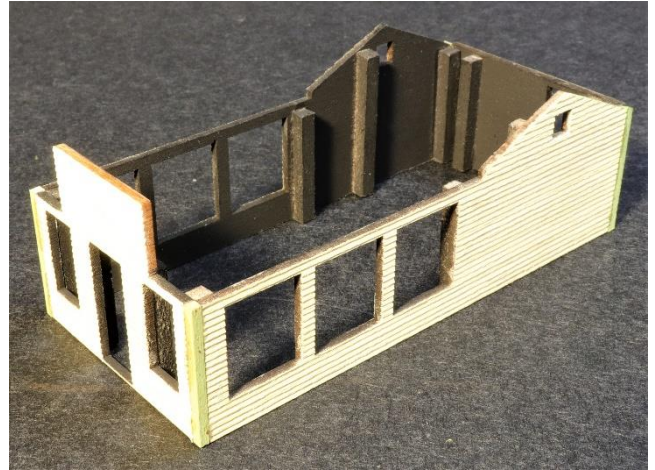
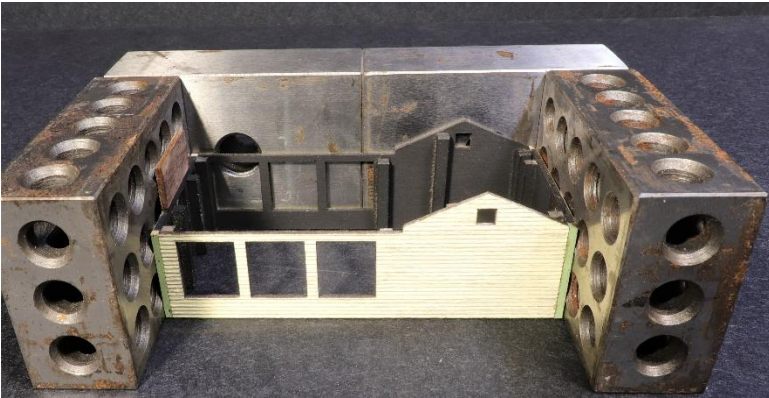
### Bracing & Corner Molding

3. In the kit we provide 1/8"x1/8" stripwood (**RED** tip) to brace the backside of the clapboard pieces. Remove parts #1-4 from clapboard sheet. Cut the 1/8" stripwood to fit on the smooth side of the parts. Reference the parts list for bracing location. We suggest you paint the walls and corner molding your desired color before adding the corner molding. Add the corner molding using the 1/16"x1/16" stripwood (**GREEN** tip) provided in the kit. The 4 corner moldings are glued to the sides of parts# 1,2. Cut the 1/16" corner molding about 1/8" longer than the edge of the wall that it will be glued to. Use 1-2-3 blocks or other squared weights to hold it in place while the glue dries. Trim the corner molding flush to top and bottom edges of walls.



## Main Building

- The main building requires parts #1-4. This is the time you want to use 1-2-3 blocks and small magnets to assure the walls are glued together square. Start with part #1, laying clapboard side down. Glue on the 2 short sides (parts #3,4). Allow to dry. Then lay down part #2, clapboard side down. Flip over the assembly of parts #1,3,4, and glue the assembly to the edges of part #2 along the corner moldings. Again, square up walls using 1-2-3 blocks and magnets.



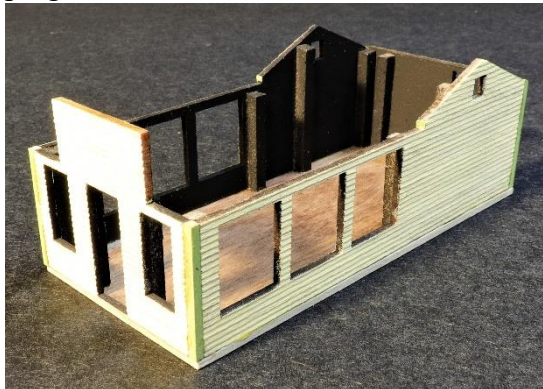
## Windows & Doors

- The windows are laser cut 1/64" plywood with an adhesive backing. While the doors are by Tichy Train Group. Just like any plastic kit, the plastic doors need to be washed off with mild dish detergent and warm water. Paint them your desired color. The windows require a little more construction. There are 2 narrow windows (parts #15,16,17) for both sides of the front door. The long side walls have 3 wide windows each (parts #18,19,20). Each window is made up of 3 parts: the sash (#16 & 19), the casement/frame (#15 & 18), and the sill (#17 & 20). Paint all the window parts while they are still attached to the large plywood sheet. We find it easier to cut out the sash, then peel off the adhesive backing on the corresponding frame, then stick the sash to the back of the frame. Being sure to center it on the frame. Now adhere the small sill piece to the inside bottom edge of the frame. Once it tries, you can cut out your completed window from the sheet.

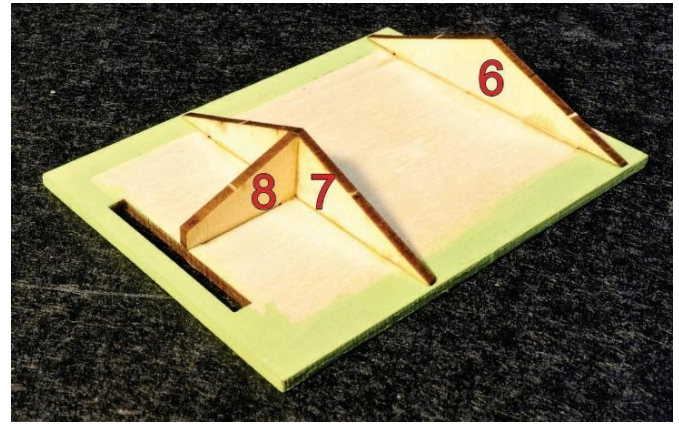
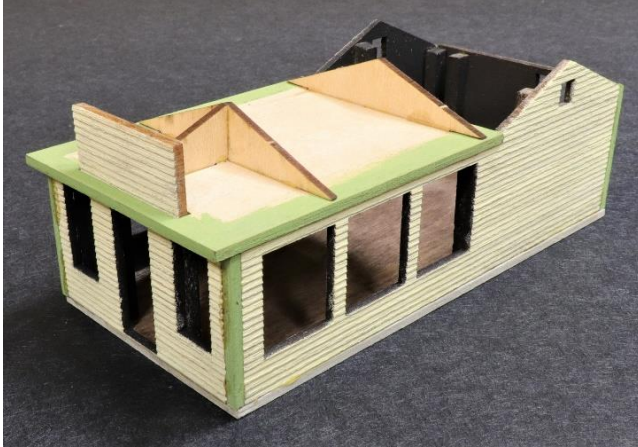
The kit includes a sheet of clear acrylic glazing. Cut the acrylic to match the sizes of the different windows. Use an appropriate glue to stick the glazing to the back of the windows. Install the window and door frames into the clapboard structure.

## Foundation & Roof

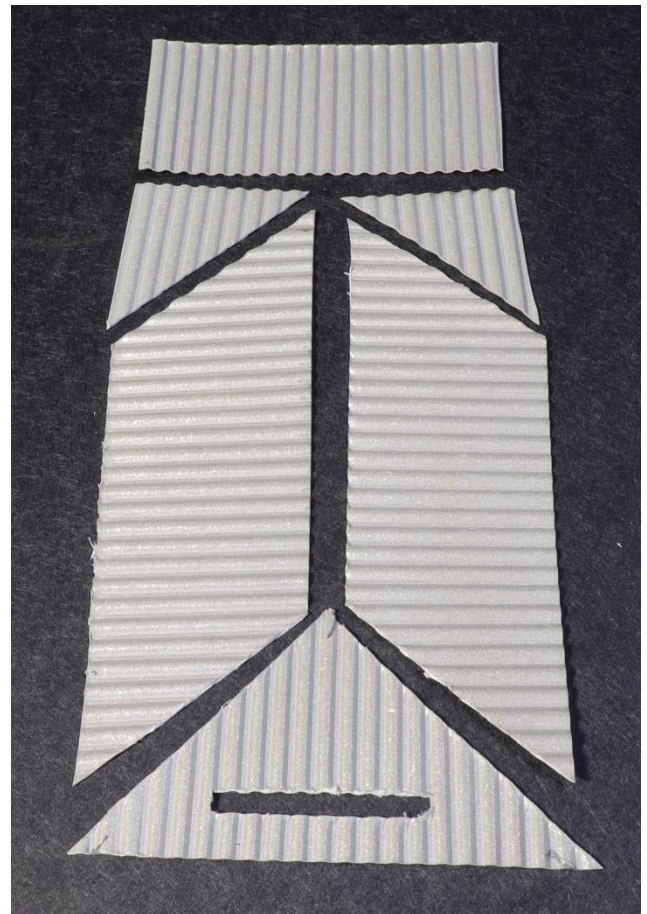
- The foundation (part #14) is an optional part, but it does help keep the walls square, and raises the whole structure off the ground like it is built on a poured slab foundation. Paint or stain both sides of the foundation to help it from warping. We stained it a dark brown to simulate wooden floor boards, and painted the thin edges a concrete color. This makes it look like a poured concrete slab from the outside. Once it is dry, glue it to the bottom of the 4 walls.



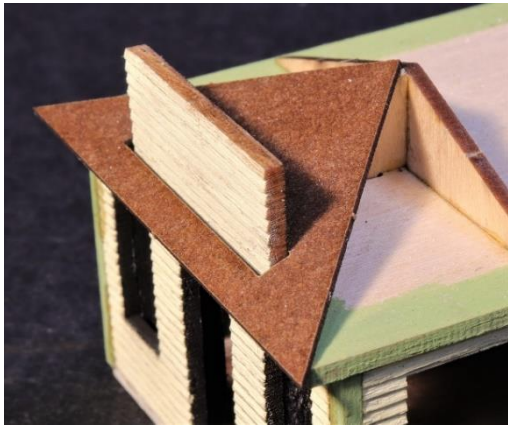
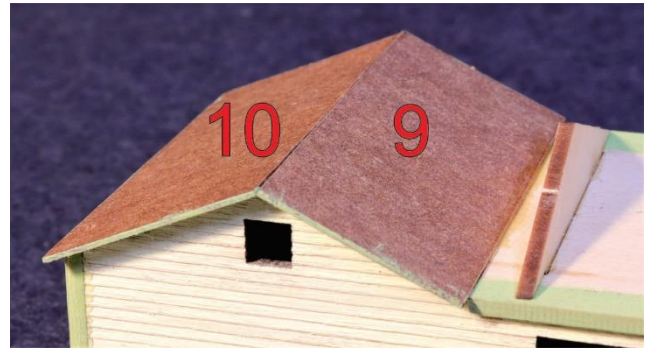
7. Paint the underneath side of part #5 the same color as your trim. This will be visible. Once dry, you can flip over #5 and add the roof supports (parts # 6,7,8). The tabs on the 3 supports will fit into the slots of #5.
8. Attach the roof assembly to the flat, front section of the main building. The slot in #5 will slide around the raised section of wall #4.



9. Add a length of 1/8x1/8 stripwood (RED tip) to fit the width of the roof peak. This will support the roofing sheets (parts #9,10).
10. Use the pieces for the roof sheathing (parts #9,10,11,12,13) as templates to cut out the shapes of the “metal” roofing material. This is the sheets of silver corrugated heavy paper. It's better to cut it a little larger than the template. You can always fine tune the sizes once you have the roofing attached to the structure.



11. Attach #9 (narrower) is on the front side of the peak. The wider sheet #10 goes on the rear side of the peak.
12. Attach part #13 (triangular) to the front slope of the building. The slot will slide over the raised wall section of the front #4.
13. Now you can add the 2 trapezoidal roof sheets (part #11,12) to each side of the sloped roof supports.



14. Paint the corrugated roof panels your desired color. Metal panels come in a variety of colors.
15. We used a thin layer of wood glue or other PVA type glue to adhere the roofing panels to the sub-roof. Start with the front triangle and the 2 smaller triangles on the back roof. Then you can work the other trapezoidal panels around them, trimming to fit.
16. Cut narrow strips of the corrugated roofing material. They should be the width of one high rib and a low half rib on each side. It's best described by the picture below. You will need about 10 strips. These will cover the ridge tops of the roof.



17. Use the strips to cover the peaks of the roof. Start on the angled front edges. Follow those by going across the top from front to back. This stretch requires two pieces. Just butt the edges against each other. Trim the back piece even with the peak of the cross roof. Finish up the roof cap with two pieces going across the peak of the back roof. Trim the ends even with the edges of the roof.

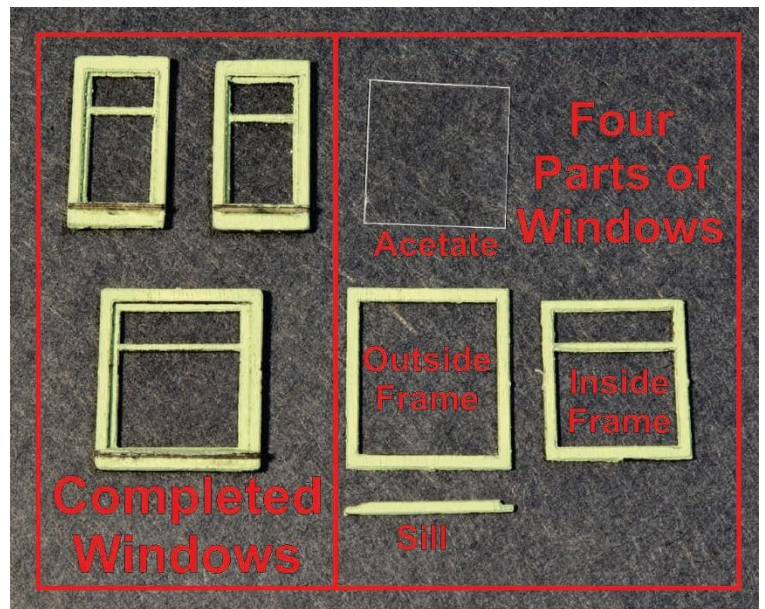


### Doors & Windows

18. The doors are straight forward. They are Tichy Train Group #8009 & 8049 doors. Simply rinse them off with warm soapy water, prime and paint them your desired trim color. Cut a small piece of the clear acetate plastic (included in the kit) the size of the 4 panes in the door, and glue it to the back of the front door 8009. Once dry, glue 8009 into the front wall (#4) opening. The back door 8049 is glued into the back wall (#3) opening.



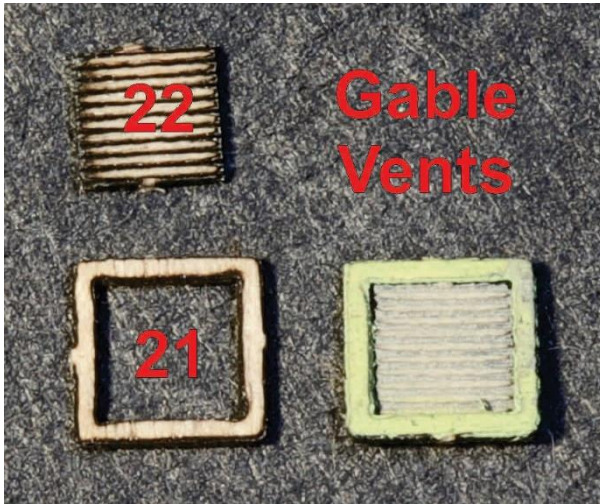
19. The windows are cut from 1/64" plywood that has an adhesive backing. We find it easiest to paint the pieces while they are still attached to the carrier sheet. Each window frame is assembled from three pieces. The two small front windows use parts # 15,16,17. An outside trim frame (15), an inside mullion frame (16), and a sill (17). Start by peeling off the protective film from the back of #15. Stick on #16 to the adhesive on #15, being sure to center it in the frame. Then peel off the protective film on the sill #17 and stick it to the outside bottom part of the 15/16 assembly. You may have to add a small amount of glue to adhere the sill securely. Cut a small piece of the clear acetate to the size of #16. Peel of the film from the back of #16 and stick on the acetate. You have a completed window assembly. Repeat this one more time with parts #15,16,17. For a total of two windows.



20. The six larger side windows are assembled the same way as in step 19, but use parts #18,19,20. An outside trim frame (18), an inside mullion frame (19), and a sill (20).
21. When all the windows are completed, you can install the two small windows into part #4, and the six large windows into part #1 & 2.



22. There are two small vents in the gable peaks of #1 & 2. They use parts #21 (outside frame) and #22(louvers). Peel off the protective film from the back of #21 and stick on #22. You might want to paint the piece before assembly for a cleaner finished look. Glue the vents into the small square openings in #1 & 2.



23. Use a piece of 1/32" x 3/32" stripwood (BLUE tip) to add trim around the sign board of #4 that is on top of the roof.



### Signs & Details

24. The kit comes with a variety of signs that can add life to your model. There are no specific spots for any of the signs... except for the one Utopia Café roof sign, and the “Daily Specials” for the sandwich boards. The sandwich board is laser cut into 1/64 brown laser board. Apply the “Specials” sign on one side, being sure that they are facing opposite directions. Then fold it in half. See photo right for reference.



25. The resin detail parts should be rinsed off with warm soapy water and dried before painting. The straight roof vent is installed by carefully drilling a hole that is slightly smaller than the diameter of the bottom of the vent. Glue into the opening. Paint around the base with a grimy black color to simulate tar sealant. The curved vent is for one of the side walls. Just glue it directly to the clapboard wall. The trashcans can be placed around the back of the building.

The model will be complete at this point. Add as many details as you would like. Create a wonderful scene on your model railroad or diorama. We want to thank you for enjoying the building of **The Utopia Cafe**. Please share your finished build by sending good quality pictures to [info@MineMountModels.com](mailto:info@MineMountModels.com) and we will post them in the "Customer Build Gallery" section of our website. Also, checkout our other products by visiting [www.MineMountModels.com](http://www.MineMountModels.com).

**Thank you,  
Ron & Michelle**



