

Glenn's Grill is there for your early morning breakfast, quick lunch break, family dinner, and the after-the-bar late night snack. Glenn grew tired of the chef's life in a BIG commercial kitchen. So, he decided to open his own diner, and live the life of a chef the way he wanted to cook it up. Quality food since 1983. Keeping the families, fishermen, and tourists from all over the region well fed and full of good spirits.

This kit is a cool little representation of a greasy spoon diner that can be found in many towns and cities. It can be built easily in a few nights. Take your time and enjoy the process. You can build it into Glenn's or use your imagination to see what you can come up with for your railroad!

Tools & Supplies

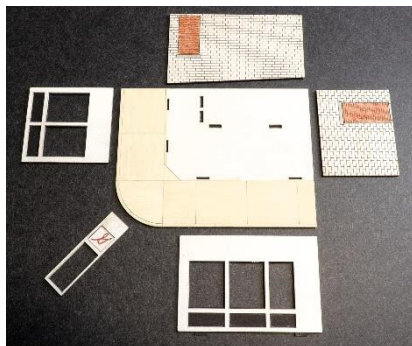
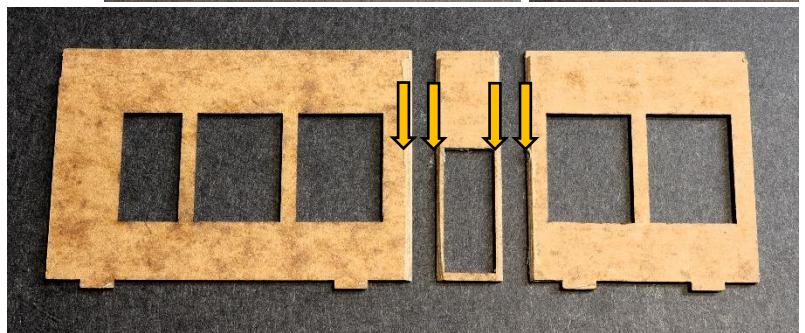
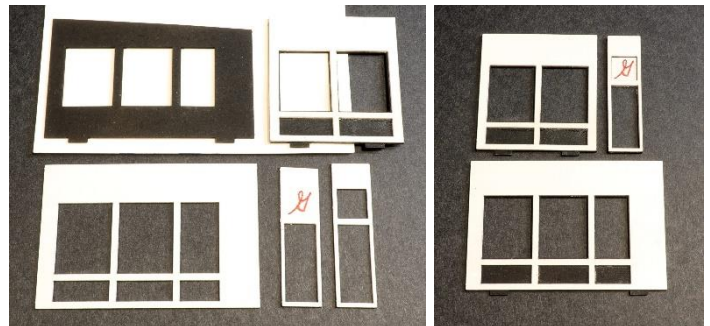
- ✓ Hobby knife, with a #11 Xacto Blade
- ✓ Fine File
- ✓ Square & Ruler
- ✓ Pounce tool or T-Pin/Needle
- ✓ 1-2-3 blocks (optional)
- ✓ Small magnets (optional)
- ✓ NWSL Chopper (optional)
- ✓ PVA glue or wood glue
- ✓ Cyanoacrylate glue (CA)
- ✓ Paints & Brushes
- ✓ Tweezers
- ✓ Patience
- ✓ Fun

Pre-assembly

1. Inspect all sheets of laser cut materials against the diagrams provided in the instructions, checking for any missing pieces or damaged parts. Please reach out to us with any issue.
2. Before starting your model, read through these instructions completely to become familiar with the parts and assembly sequence.

Bracing & Corner Molding

3. Start by assembling the long and short walls that face the sidewalk and street view. Part #1 is glued on top of part # 2, part # 3 on top of #4, and part #5 on #6. Be sure to line up the main bottoms of the walls. You will see small tabs on the bottom of # 2 and #4. They should stick out the bottom of the wall once glued together. We suggest you paint the layered walls before assembling them.
4. After the three walls have dried, sand or file the back edges where the angled door wall meets the other two walls. These angles should be approximately 22.5 degrees to create a cleaner 45



degree joint once they are assembled. Take care when filing on the sides of the door frame.

5. Glenn's comes with a base and sidewalk, part #7, to help complete the scene. Paint the sidewalk your preferred concrete color.

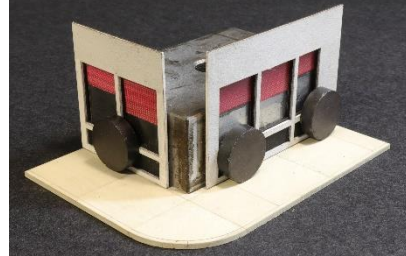
6. Prep the long and short back walls, parts #8 and 9, that have cinderblocks and doorways engraved on them. Decide which of the two doors you want to be an entrance. We designed it to be versatile, depending on where you need a back alley or lot. Just score the door open you want to use and pop out the brick filler piece.



7. The doors are by Tichy Train Group. Just like any plastic kit, the plastic doors need to be washed off with mild dish detergent and warm water. Paint them with your desired color. There is a sheet of clear acetate that has the glazing for doors and windows already precut to the correct sizes. Add the red shade from the schematic sheet or create your own window coverings.



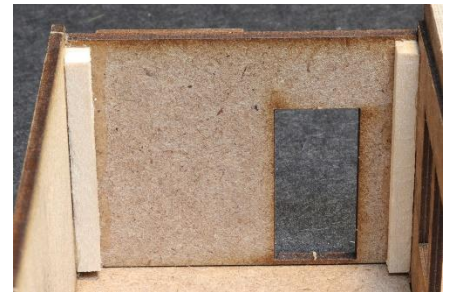
8. Now just test fit them into the different openings, and glue them once happy with the fit. Use all the pictures provided to help with locations.
9. When you are satisfied with the preassembly of the walls, it is time to install them onto the sidewalk sheet. Start with the 1/2 and 3/4 walls and glue them into the slots in the sidewalk. Use the 1-2-3 blocks to square them up. Then add the 5/6 doorway wall between the other walls.



10. We provided a checkboard pattern for the floor. Also, parts #18, 19, and 20 are for the counter.

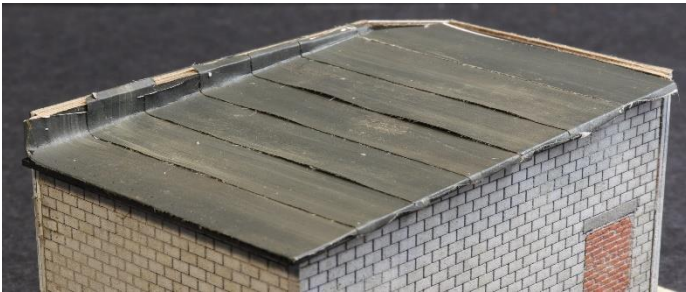
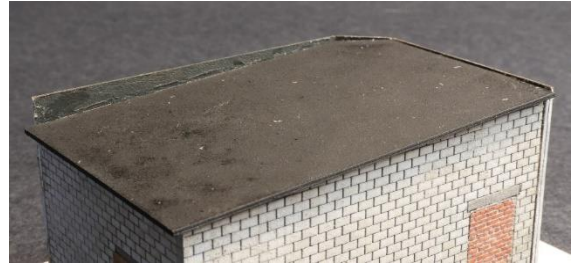
***We have tables and chairs, and condiment trays available on MineMountModels.com that can be used to further detail the inside. ***

11. In the kit we provide 1/8"x1/8" stripwood (RED tip) to brace the backside of short back wall #9. Cut the 1/8" stripwood to fit on the smooth side of the parts. Reference the parts list for bracing location. The wood helps strengthen the corners.
12. Now you can add back walls 8 and 9. Again, using the 1-2-3 blocks to square everything up.



Roof

13. Add the roof panel part #13 on top of the walls. Pay attention to the angle on the top of wall #4 and 8. The roof will pitch down toward the back, short wall.
14. Turning to the front of the building, build up the layered dentil modeling. Each of the three walls has three parts that are stacked to create the detail. We like to paint each layer a different color to make the lines pop out. Also, file the back edges to 22.5 degrees, just like the walls. The molding will look better.
15. We painted the valley of this roof a grimy black color before applying the paper rolled roofing sheets. Also paint and weather the rolled roofing before applying. Start at the bottom edge, using the engraved lines on the roof as a guide, layer the strips with a slight overlap. Continue until you reach the top.

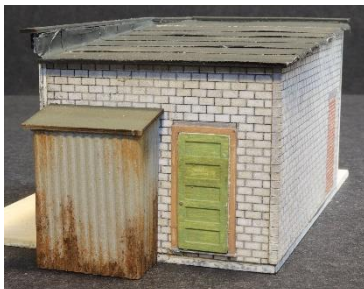
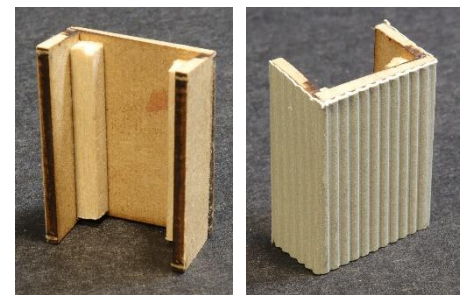


16. Now add parts #15, 16, 17 to the top edge of the front walls, above the dentil molding.

Cold Storage Bump Out

***The small bump out is an optional part of the kit. Omit it if you plan to have other structures butt up against both back walls of Glenn's ***

17. Add 1/8"x1/8" stripwood (RED tip) to strengthen the short side walls parts #11 and 12. See schematic for location. Attach both walls to the back of part #10. Fill the top of #10 to match the angle of the side walls.



18. Wrap the corrugated material around the walls with the lines running vertically.

19. Add the roof part #14. Apply the rolled roofing to finish it off.

20. This assembly can be placed anywhere along the two back walls.



Signs & Details

- The kit comes with a variety of signs that can add life to your model. There are no specific spots for any of the signs. Cut them out with a new sharp hobby blade and glue them to the walls.
- The main sign is the roof billboard. The wood support brackets are created using 1/16" x 1/16" stripwood (**GREEN** tip) and 1/32" x 1/16" stripwood (**BLUE** tip). Use the template provided to layout the three vertical leg assemblies.
- Then connect the three legs with the 1/32" x 1/16" stripwood (**BLUE** tip) for the horizontal cross members. There are also a couple short vertical pieces on the top to help support the tall letters of "Glenn's".



24. We suggest painting the sign lettering and spatula prior to attaching them to the wood support assembly. Start with the spatula as the bottom layer. Then apply the remaining "Glenn's Greasy Spoon GRILL" letters to complete the billboard.

25. The resin detail parts should be rinsed off with warm soapy water and dried before painting. The cyclone roof vent and gooseneck vent are installed by

filing the bottoms to match the pitch of the roof. Glue them into the locations you like. Paint around the base with a grimy black color to simulate tar sealant. The trash cans, and other resin details can be placed around the building and on the sidewalk where you see fit.

The model will be complete at this point. Add as many details as you would like. Create a wonderful scene on your model railroad or diorama. We want to thank you for enjoying the building of **Glenn's Greasy Spoon.**

. Please share your finished build by sending good quality pictures to info@MineMountModels.com and we will post them in the "Customer Build Gallery" section of our website. Also, check out our other products by visiting www.MineMountModels.com .

**Thank you,
Ron & Michelle**

