



**Greater Atlanta Australian
Shepherd Club**

<http://www.gaasc.org>

Jubilee Stock Dog Trial 2018

New Dates

November 1 - 4, 2018

2 ASCA Farm Dog Trial (sheep/cattle/ducks/mixed)

4 ASCA Stockdog Trials

Hardrock Aussies Farm,

Cartersville, GA

<https://www.facebook.com/HardrockAussies>

\$50 Cash awarded to the High Combined Farm Dog 11/01/2018

(Sponsored by Dean Jennings)

\$50 Cash awarded to the High Combined Farm Dog 11/02/2018

(sponsored by Hardrock Farm/David Evans)

Belt Buckle Awards: High Combined Area Trials

(sponsored by GAASC)

High Combined ALL Trials

(Sponsored by Hardrock Aussies)



Wendy Eldredge
(678) 427-2713
wigglywendy@yahoo.com

Renee Watson
(770) 510-8641
renwatson@comcast.net

WE APPRECIATE TEAM PLAYERS!



We need people to help. This is a great way to learn something more about events you would like more experience with. Contact any event secretary & let them know how you can help. We will have professional stock handlers for Cattle and Sheep, but we need timers and Duck wranglers. Thank you!

Course Director:

Wendy Eldredge (678) 427-2713, wigglywendy@yahoo.com

Renee Watson (770) 510-8641, renwatson@comcast.net

Event Committee: Renee Watson, Cheryl Padgett, Dean Jennings

- All trials will be conducted under the rules and regulations of ASCA Stockdog program. The rule book is available at <https://www.asca.org/Portals/0/StockdogRules.pdf> or call ASCA at 979-778-1082
- Current immunization record and/or certificate of health from your veterinarian may be requested.
- Disputes must be brought to the immediate attention of the course director and will in all cases follow the dispute regulations outlined in the ASCA Stockdog rule book, pages 76-83.
- ASCA has the right to reprimand or suspend any person or persons from any or all privileges of ASCA for conduct prejudicial to the best interests of the Australian Shepherd, ASCA events or ASCA. Exhibitors are to maintain the highest level of sportsmanship and are to conduct themselves accordingly. Foul or abusive language, yelling at exhibitors or judges, disorderly conduct, and/or poor sportsmanship will not be allowed and shall be disciplined in accordance with Chapter 11 and the ASCA Dispute Rules and ASCA Discipline Guidelines.
- Visit ASCA.org for updated entry forms or for Non-ASCA dogs apply for a QT Number

Fellowship Dinner: Join us Saturday night for a Dutch treat dinner at one of the local Cartersville restaurants. As host, Cheryl Padgett (hardrockaussies@yahoo.com) will select the restaurant and make reservations. Please let Cheryl know if and how many in your party plan to attend.

Event Awards: (In all awards both qualifying and non-qualifying scores count; so hang in there and don't get "thank you'd")

Flat Ribbons award for 1st through 4th place, and qualifying score

Rosettes for High In Trial Started, Open and Advanced

Rosette for High Scoring Champion of Record (Aussie only)

Rosette for High Scoring Junior (showing in junior class only)

Rosette and Beanie Baby Witch for New WTCH Title and New FTCH Title

Farm Dog Trial Awards:

Flat Ribbons award for 1st through 4th place, and qualifying scores

Ties will be broken by high score on the most complex stock common to the tied individuals (complexity=Cattle, mixed, sheep, duck). If a tie still exists then the same criteria will be used for the highest score on the sort, then gather, then time. If there is no common stock, then the score with the most complex stock wins.

Award restrictions: For Exhibition Only dogs do not qualify for any awards. The word "Dog" indicates that it may be any herding breed or cross breed of herding origin as outlined and approved by ASCA.

Pre-Entry for all breeds opens September 1, 2018. Pre-Entry must be postmarked prior to closing date October 26, 2018. Day of entries will be happily accepted for any available class. Absolutely no new entries accepted for a trial after that trial has started. The waiting list will be used in the event of competitor withdraw or no-show.

Entries must have clearly visible USPS postmark. No meter mail allowed. No DHL. UPS, telephone, email, or faxed entries will be accepted. Overnight entries accepted only if signature is waived. Incomplete or unintelligible entry forms may delay the confirmation of your entry.

ATTENTION EXHIBITORS Run Orders will be drawn each day for all trials that day.

These shows will be judged and run by the Show Rules of the Australian Shepherd Club of America. Dogs must be ready for judging. Neither the club nor the chairman will be responsible or obligated to furnish any services for notifying exhibitors or their agents of class judging. Entry fees will not be refunded in the event a dog is absent, disqualified, excused, or barred from competition by action of the show committee. Entry fees will only be refunded if the refund request is received before the pre-entry closing date, no entry fee will be refunded if the show cannot be opened or completed by reasons of riots, civil disturbances, fire, Acts of God, or public emergency. The show-giving club, the Show Chairman, their agents, officers, and/or committee shall assume no responsibility for injury to children. Judges may be substituted. All dogs must be leashed or crated at all times, except when competing. No electrical and/or mechanical training devices will be permitted on the show grounds. Please clean up after your dogs. Class Conflicts: Please notify the appropriate ring official of your conflict. For the safety of your dogs and others all dogs must have current vaccinations against rabies, distemper/parvo, you are asked to bring a copy of the rabies certificate with you.

Run Orders for all Trials will be drawn the day of each trial

Handler's Meetings each day at 8:30 am - Run order posted daily

Farm Dog Trials: Two Farm Trials

Cheryl Padgett(GA) Thursday November 1, 2018

Gates open at 7:00AM

Parking in lower pasture only unless otherwise directed

Handler's meeting at 8:30 AM; trials begin immediately after completion of handlers meeting.

Cattle (Beef Mix-breed), Mixed Cattle/Sheep, Sheep (Hair Mix-breed), Ducks (mix-breeds) (actual run order may vary)

Kim Schneider (MN) Friday November 2, 2018

Gates open at 7:00AM

Parking in lower pasture only unless otherwise directed

Handler's meeting at 8:30 AM; trials begin immediately after completion of handlers meeting.

Cattle (Beef Mix-breed), Mixed Sheep/Ducks, Sheep (Hair Mix-breed), Ducks (mix-breeds) (actual run order may vary)

Stock head count will be 5-Cattle, 5-Sheep, 5-Ducks and 5 each Cattle and sheep for the mixed.

Specifications for all Farm Trials are listed at the end of this premium.

Farm Dog Trial entries **per day** will be limited to **8** Cattle, **8** Mixed, **8** Sheep and **8** Ducks.

A waiting list will be established for classes as they fill, watch the ASCA-L, Facebook Event page for entry updates. Entry limits may be adjusted based on pre-entry interest.

Running order will be a daily draw and begin with the Advanced classes

Saturday November 3, 2018 —Arena Trials Gates open at 7:00AM. Parking in upper or lower pastures—stay well away from the Arena. The Arena trials on Saturday will run both Cattle and Ducks concurrently. Ms. Vest will judge 1st trial Cattle while Ms. Schneider judges 1st trial Ducks. Once both cattle and both ducks are complete there will be a short lunch break while the sheep are set up. Ms. Vest will judge the 1st Sheep trial and Ms. Schneider the 2nd Sheep trial. Entry limits per day for Arena trials will be 24-Cattle (12/trial), 32-Duck (16/trial), and 50- Sheep (22/trial). We will be running 3 head of Cattle, 3 head of Sheep and 5 head of Ducks. Run order will be assigned by Course Director and posted prior to the handler's meetings. Entry limits may be adjusted based on pre-entry interest.

<u>Trial</u>	<u>Judge</u>	<u>Registration</u>	<u>Judging</u>	<u>Course</u>
1 st Trial	Rachel Vest (GA)	07:30-08:00 AM	9:00 AM	A-course C/S
1 st Trial	Kim Schneider (MN)			A-course Ducks
2 nd Trial	Rachel Vest (GA)	07:30-08:00 AM	9:00 AM	A-course Ducks
2 nd Trial	Kim Schneider (MN)			A-course C/S

Arena Trials:

Sunday November 4, 2018 Arena Stock Dog Course B (Counterclockwise)

Gates open at 7:00AM. Parking in upper or lower pastures—stay well away from the Arena.

The Arena trials on Saturday will run both Cattle and Ducks concurrently. Ms. Schneider will judge 1st trial Cattle while Ms. Vest judges 1st trial Ducks. Once both cattle and both ducks are complete there will be a short lunch break while the sheep are set up. Ms. Schneider will judge the 1st Sheep trial and Ms. Vest the 2nd sheep trial. Entry limits per day for Arena trials will be 24-Cattle (12/trial), 32-Duck (16/trial), and 50- Sheep (22/trial). We will be running 3 head of Cattle, 3 head of Sheep and 5 head of Ducks. Run order will be assigned by Course Director and posted prior to the handler's meetings. Entry limits may be adjusted based on pre-entry interest.

<u>Trial</u>	<u>Judge</u>	<u>Registration</u>	<u>Judging</u>	<u>B-Course (Counterclockwise)</u>
1 st Trial	Rachel Vest (GA)	7:30-8:00 AM	8:30 AM	B-course C/S
1 st Trial	Kim Schneider (MN)			B-course Ducks
2 nd Trial	Rachel Vest (GA)	7:30-9:00 AM	8:30 AM	B-course Ducks
2 nd Trial	Kim Schneider (MN)			B-course C/S

Please use the ASCA Entry Forms attached with this flier, or go to <https://www.asca.org/Portals/0/StockEntry.pdf>

Please print legibly and complete all portions of the entry form.

Bitches in heat will run in order.

Entries open on September 1, 2018 to all herding breeds. Pre-entry will be closed on October 26, 2018. Please do not send entries with a signature delivery. Make checks payable to GAASC and mail all entries to:

GAASC, c/o Renee Watson, 5129 Hugh Howell Rd, Stone Mountain, GA 30087

There will be a \$35.00 service charge for any returned checks. Refunds issued up to pre-entry deadline.

Substitutions allowed with dogs that you own or co-own.

Farm Dog Trial Thur. & Friday Nov 1 & 2 2018		
<u>class</u>	<u>Pre-entry</u>	<u>Day Of (If Available)</u>
Sheep	\$50.00	\$60.00
Cattle	\$60.00	\$70.00
Ducks	\$35.00	\$45.00
Mixed	\$60.00	\$70.00
*All 4 Classes	\$175.00	\$210.00

These are prices for Regular and FEO Farm Dogs

*Junior Handler must run in the Working Jr. Handler level to qualify or this discounted price.

FACILITY: This is a private farm, so please treat it with respect. On Friday park in the lower pasture; Saturday and Sunday you park in either the lower or upper pasture. Toilet facilities will be on site.

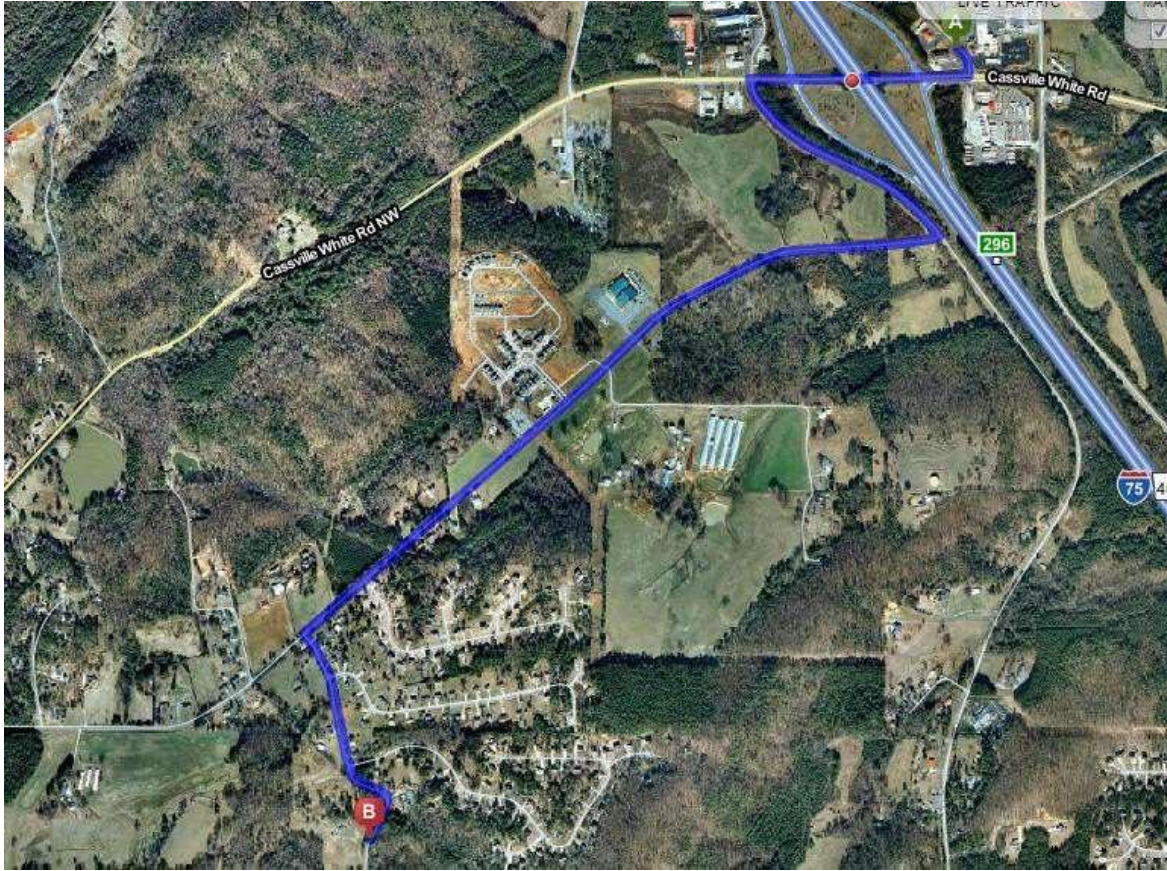
All Class all trials discounted price \$750.00

Arena Trial November 3-4, 2018			
<u>Class</u>	<u>Pre-entry</u> Entries received before October 26, 2018	<u>Day Of (If Available)</u> Entries received after October 26, 2018	<u>*Junior Handler</u>
Sheep	\$45.00	\$55.00	\$15.00
Cattle	\$55.00	\$65.00	\$20.00
Ducks	\$35.00	\$45.00	\$10.00
*All 3 Classes per trial (any combination of dogs you own or co-own, same handler)	\$125.00	\$140.00	\$40.00

NOTICE TO EXHIBITORS

—ASCA has the right to reprimand or suspend any person or persons from any or all privileges of ASCA for conduct prejudicial to the best interests of the Australian Shepherd, ASCA events or ASCA. Exhibitors are to maintain the highest level of sportsmanship and are to conduct themselves accordingly. Foul or abusive language, yelling at exhibitors or judges, disorderly conduct, and/or poor sportsmanship will not be allowed and shall be disciplined in accordance with Chapter 11 and the ASCA Dispute Rules and ASCA Discipline Guidelines.

Directions to show site: Address for GPS 445 Shinall Gaines Rd NW Cartersville, GA 30121. From Interstate 75 take exit 296 (Cassville-White Rd.) turn West (from Atlanta it's a left turn) and turn left on first road—Peoples Valley Road (if you pass the gas stations you went too far). Go .4 miles and turn Right on Old Cass-White Road. Go 1.3 miles and turn Left onto Shinall Gaines Rd. Go about .2 miles; Farm is on right. Look for Black Gate.



OVERNIGHT PARKING IS NOT AVAILABLE

Camping:

KOA - 800 Cassville White Rd Nw, Cartersville, GA 30121 (770) 382-7330

Hotels -*Double check pet policy before booking your rooms.*

Cartersville North Inn & Suites – 11 Kent Dr NW, Cartersville,GA (770) 386-9259 (Host Motel – ask for ‘dog show’ rate)

Microtel Inn and Suite – 1348 Joe Frank Harris Pkwy, Cartersville, GA (678) 605-9331

Days Inn - 5618 Hwy. 20 Se, Cartersville, GA (770) 382-1824

Best Western Garden Inn & Suites - 5663 Highway 20 NE, Cartersville, GA (770) 386-1569

Hampton Inn - 5600 Hwy. 20 Se, Cartersville, GA (770) 382-8999

Knights Inn - 420 E Church St, Cartersville, GA (770) 386-7263

Quality Inn -235 S. Dixie Ave., Cartersville, GA (770) 386-1361

Red Roof Inn – 28 Hwy 20 Spur, I-75 exit 290, Cartersville, GA (770) 387-1800

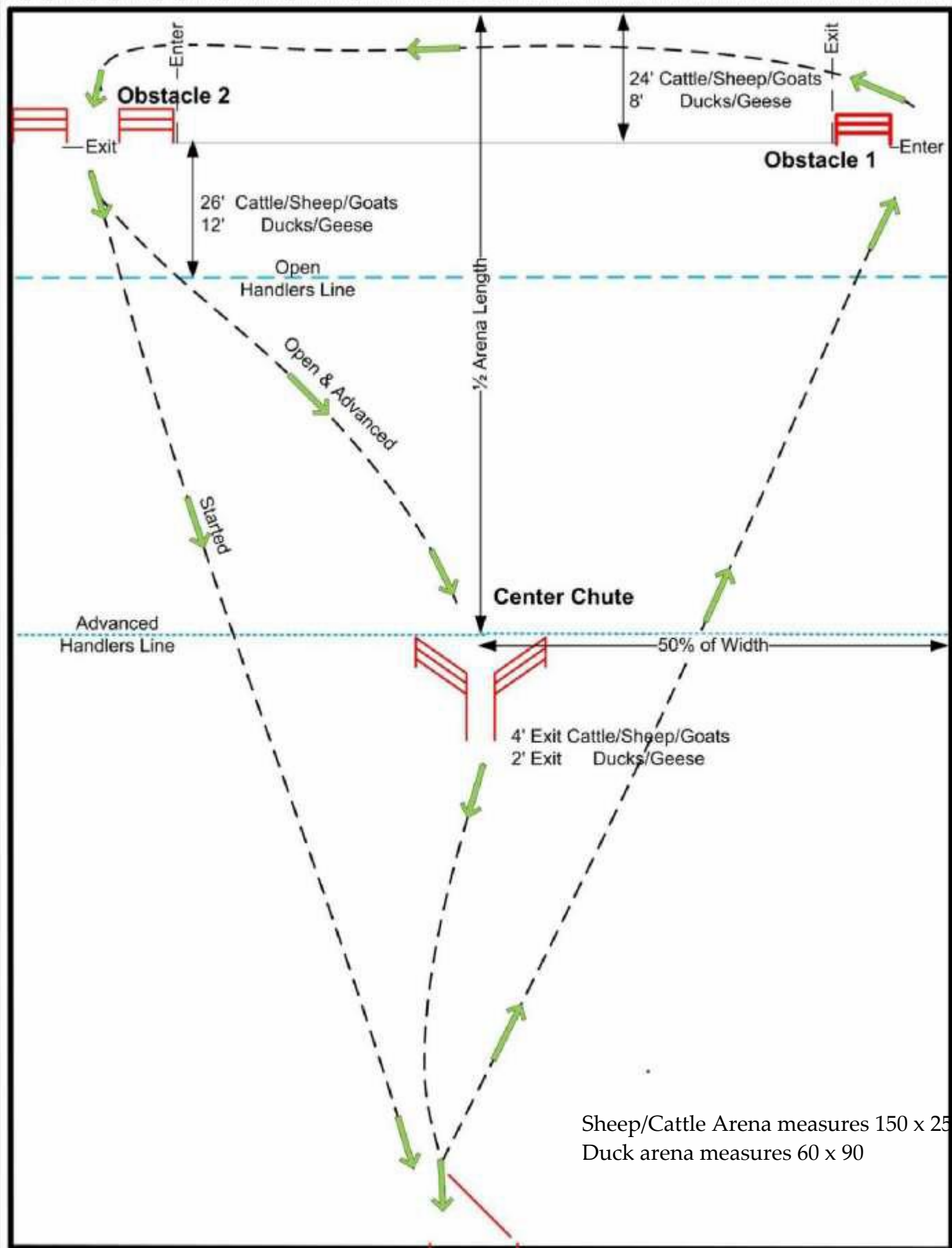
Please, no dog washing in the motels, and please **pick up after your dog** at the motel and show grounds.

Veterinarian Services:

Westside Animal Hospital: Dr. Lisa Walker. 201 Doulthit Ferry Rd. Cartersville, GA 30120 (770) 607-3055. Emergency after hours (770) 547-9153 <http://www.cartersvillevets.com/westside-animal-hospital/>

Taff, William DVM Large Animal Veterinary Hospital. 1482 Old Alabama Road, Taylorsville, GA (770) 382-7475

COURSE A



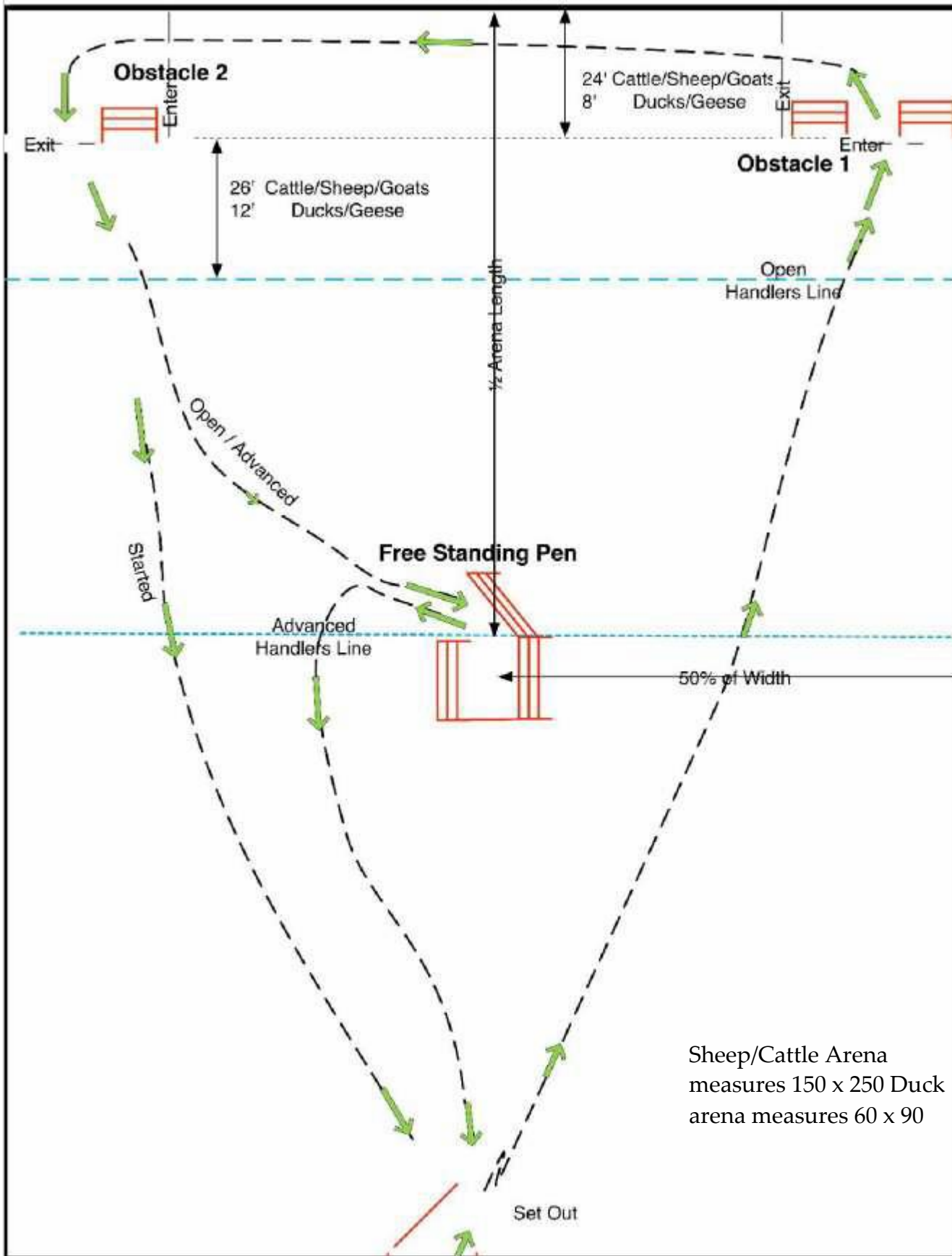
Sheep/Cattle Arena measures 150 x 250
 Duck arena measures 60 x 90

Minimum Arena Size
 Cattle/Sheep/Goats 100' x 200'
 Ducks/Geese 60' x 90'
 Maximum Ducks/Geese 100' x 100'

Take-Pen
 Re-Pen

* Panel Opening
 10' Cattle/Sheep/Goats
 4' Ducks/Geese

Course B C-Clockwise



Sheep/Cattle Arena
measures 150 x 250 Duck
arena measures 60 x 90

Minimum Arena Size
Cattle/Sheep/Goats 100' x 200'
Ducks/Geese 60' x 90'

* Panel Opening
10' Cattle/Sheep/Goat
4' Ducks/Geese

GAASC Farm Trial 1 – Cattle

Time: 18 minutes, warnings at 10 and 3 minutes Tie Breaker: #1 GATHER, #2 SORT

Tasks must be attempted in order. Handler is responsible for closing all gates including chute back gate and head gate. Course will start with 5 head of stock in Pens 6, 7, 8 and 9 with all course gates closed.

Task	Points
PEN #1 – move stock from Pen Specified by Judge through Front Alley into Pen 1	6
PEN #2 – move stock from Pen 1 into Pasture	7
TASK #1, FIELD WORK – move stock to driveway end of Pasture, call dog off and move to cone Advanced handler drives stock, Open handler may drive or fetch	20
GATHER – send dog from cone to gather stock into Pen 1 Advanced handler stays at cone until dog is sent, Open handler may move up halfway before sending dog	20
PEN #3 – move stock from Pen 1 into Pen 2	6
SORT – sort 3 marked head into Pen 3 from Pen 2, then reunite all in Pen 2 Sort direction at handler's discretion	25
TASK #2, FOOTBATH – move stock from Pen 2 thru Footbath into Pen 4	20
PEN #4 – move stock from Pen 4 into Chute	6
CHUTE – inspect/doctor stock from Inspection Alley and move through Back Alley into open pen Advanced handler sprays stock for parasites, Open handler inspects stock	20

GAASC Farm Trial 1 – Mixed, Sheep & Cattle

Time: 18 minutes, warnings at 10 and 3 minutes Tie Breaker: #1 GATHER, #2 SORT

Tasks must be attempted in order. Handler is responsible for closing all gates including chute back gate and head gate. Course will start with 5 head of sheep in pasture and 5 head of cattle in Pens 6, 7, 8 and 9 with all course gates closed.

Task	Points
SHEEP GATHER – send dog from cone to gather stock and into Wide Alley. Advanced handler stays at cone until dog is sent, Open handler may move up halfway before sending dog	20
SHEEP PEN #1 – move stock from Wide Alley into Pen B	6
SHEEP SORT – sort 3 marked head into Pen C from Pen B, then reunite all in Pen B Sort direction at handler's discretion	25
SHEEP TASK #1 TRAILER – move stock from Pen B through Narrow Alley and Pen D to load stock into trailer Unload stock and move stock back through Pen D and Narrow Alley into Pen B (leave trailer gate open)	20
SHEEP PEN #2 – move stock from Pen B through Narrow Alley into open pen Advanced handler stays at gate while dog moves stock out of pen, Open handler may move anywhere	6
Time will stop with sheep in open pen with gate closed. Time will restart when gate is opened to cattle stock pen specified by judge.	
CATTLE PEN #3 – move stock from Pen Specified by Judge through Front Alley into Pen 2	7
CATTLE TASK #2, FOOTBATH – move stock from Pen 2 thru Footbath into Pen 4	20
CATTLE PEN #4 – move stock from Pen 4 into Chute	6
CATTLE CHUTE – inspect/doctor stock from Inspection Alley and move thru Alley into open pen Advanced handler sprays stock for parasites, Open handler inspects stock	20

GAASC Farm Trial 1 – Sheep

Time: 14 minutes, warnings at 7 and 3 minutes Tie Breaker: #1 GATHER, #2 SORT

Tasks must be attempted in order. Handler is responsible for closing all gates including chute back gate and head gate. Course will start with 5 head of stock in Pens 6, 7, 8 and 9 with all course gates closed.

Task	Points
PEN #1 – move stock from Pen Specified by Judge through Front Alley into Pen 1	6
PEN #2 – move stock from Pen 1 into Pasture	7
TASK #1, FIELD WORK – move stock to driveway end of Pasture, call dog off and move to cone Advanced handler drives stock, Open handler may drive or fetch	20
GATHER – send dog from cone to gather stock into Pen 1 Advanced handler stays at cone until dog is sent, Open handler may move up halfway before sending dog	20
PEN #3 – move stock from Pen 1 into Pen 2	6
SORT – sort 3 marked head into Pen 3 from Pen 2, then reunite all in Pen 2 Sort direction at handler's discretion	25
TASK #2, FOOTBATH – move stock from Pen 2 thru Footbath into Pen 4	20
PEN #3 – move stock from Pen 4 into Chute	6
CHUTE – inspect/doctor stock from Inspection Alley and move through Back Alley into open pen Advanced handler sprays stock for parasites, Open handler inspects stock	20

GAASC Farm Trial 1 – Ducks

Time: 12 minutes, warnings at 7 and 3 minutes Tie Breaker: #1 GATHER, #2 SORT

Tasks must be attempted in order. Handler is responsible for closing all gates including chute back gate and head gate. Course will start with 5 head of stock in Gather basket and all gates closed.

Tasks must be attempted in order. Handler is responsible for closing all gates including chute back gate and head gate. Course will start with 5 head of stock in Pen 3 and all gates closed.

Task	Points
PEN #1 – move stock from Pen 3 into Large Pen	6
TASK #1 BRIDGE – move stock over Bridge and clockwise through Underpass Advanced handler must stay behind Underpass until stock enters bridge, Open handler may move anywhere	20
TASK #2, FOOTBATH – move stock from Underpass thru Footbath Advanced handler must stay 5' from Foot Bath until stock enters Footbath, Open handler may move anywhere	20
CHUTE – move stock into Chute, load stock into Crate and move Crate to Wagon	20
GATHER – send dog from spigot to gather stock into Large Pen Advanced handler stays at spigot until dog is sent, Open handler may move up halfway before sending dog	20
PEN #2 – move stock from Large Pen into Pen 1	7
SORT – sort 3 marked head into Pen 2 from Pen 1 then reunite all in Pen 1 Sort direction at handler's discretion	25
PEN #3 – move stock from Pen 1 into Pen 2	6
PEN #4 – move stock from Pen 2 into Alley	6

GAASC Farm Trial 2 – Cattle

Time: 18 minutes, warnings at 10 and 3 minutes Tie Breaker: #1 SORT, #2 GATHER

Tasks must be attempted in order. Handler is responsible for closing all gates including chute back gate and head gate. Course will start with 5 head of stock in Pens 6, 7 and 8 with all course gates closed and feed in feed bunk.

Task	Points
PEN #1 – move stock from Pen Specified by Judge through Front Alley and Pen 1 into Pen 2	10
SORT – sort 3 marked head into Pen 3 from Pen 2, then reunite all in Pen 1 Sort direction at handler's discretion	25
PEN #2 – move stock from Pen 1 to Pasture	5
TASK #1 FIELD WORK – move stock to feed bunk in Pasture, call dog off and move to cone Advanced handler drives stock, Open handler may drive or fetch	20
GATHER – send dog from cone to gather stock and move stock to Pen 1 Advanced handler stays at cone until dog is sent, Open handler may move up halfway before sending dog	20
PEN #3 – move stock from Pen 1 to Pen 2	5
TASK #2, FOOTBATH – move stock from Pen 2 thru Footbath to Pen 4	20
PEN #4 – move stock from Pen 4 into Chute	5
CHUTE – inspect/doctor stock from Inspection Alley and move through Back Alley to open pen Advanced handler sprays stock for parasites, Open handler inspects stock	20

GAASC Farm Trial 2 – Mixed, Sheep & Ducks

Time: 14 minutes, warnings at 7 and 3 minutes Tie Breaker: #1 SORT, #2 GATHER

Tasks must be attempted in order. Handler is responsible for closing all gates including chute back gate and head gate. Course will start with 5 head of ducks in Pen 3, 5 head of sheep in Pens G, H and J with trailer gate open and all other gates closed.

Task	Points
SHEEP PEN #1 – move stock from Judge Specified Pen through Narrow Alley into Pen B	6
SHEEP SORT – sort 3 marked head into Pen C from Pen B, then reunite all in Pen B Sort direction at handler's discretion	25
SHEEP TASK #1 TRAILER – move stock from Pen B through Narrow Alley and Pen D to load stock into trailer Unload stock and move stock back through Pen D and Narrow Alley into Pen B (leave trailer gate open)	20
SHEEP PEN #2 – move stock from Pen B through Narrow Alley into open pen Advanced handler stays at gate while dog moves stock out of pen, Open handler may move anywhere	7
Time will stop with sheep in open pen with gate closed. Time will restart when gate is opened to duck pen 3.	
DUCK PEN #3 – move stock from Pen 3 into Large Pen	6
DUCK TASK #2, FOOTBATH – move stock thru Footbath Advanced handler must stay 5' from Foot Bath until stock enters Footbath, Open handler may move anywhere	20
DUCK CHUTE – move stock into Chute, load stock into Crate and move Crate to Wagon	20
DUCK GATHER – send dog from spigot to gather stock through Large Pen into Pen 1 Advanced handler stays at spigot until dog is sent, Open handler may move up halfway before sending dog	20
DUCK PEN #4 – move stock from Pen 1 through Pen 2 into Alley	6

GAASC Farm Trial 2 – Sheep

Time: 14 minutes, warnings at 7 and 3 minutes Tie Breaker: #1 SORT, #2 GATHER

Tasks must be attempted in order. Handler is responsible for closing all gates including chute back gate and head gate. Course will start with 5 head of stock in Pens 6, 7, 8 and 9 with all course gates closed and feed in feed bunk.

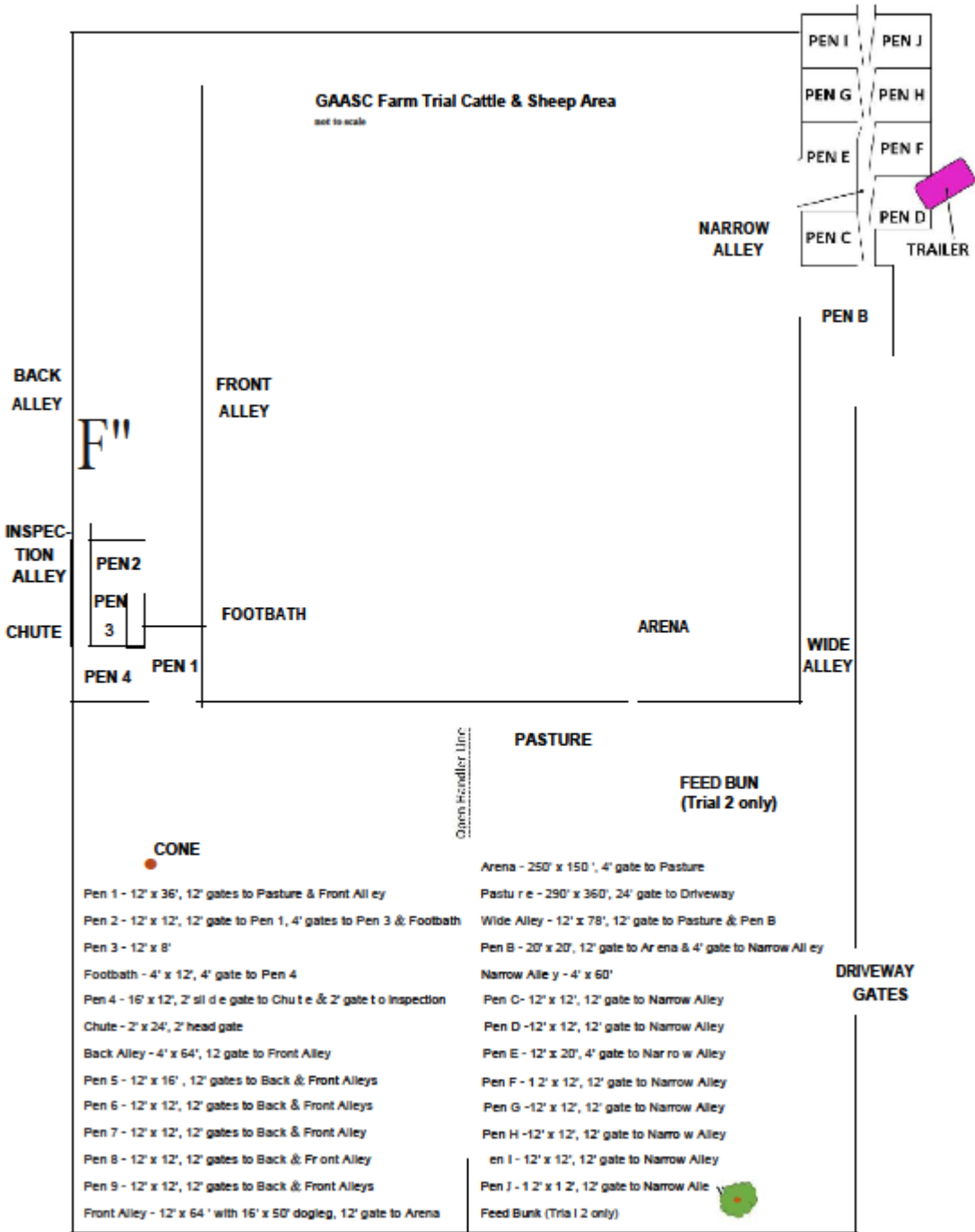
Task	Points
PEN #1 – move stock from Pen Specified by Judge through Front Alley and Pen 1 into Pen 2	10
SORT – sort 3 marked head into Pen 3 from Pen 2, then reunite all in Pen 1 Sort direction at handler's discretion	25
PEN #2 – move stock from Pen 1 to Pasture	5
TASK #1 FIELD WORK – move stock to feed bunk in Pasture, call dog off and move to cone Advanced handler drives stock, Open handler may drive or fetch	20
GATHER – send dog from cone to gather stock and move stock to Pen 1 Advanced handler stays at cone until dog is sent, Open handler may move up halfway before sending dog	20
PEN #3 – move stock from Pen 1 to Pen 2	5
TASK #2, FOOTBATH – move stock from Pen 2 thru Footbath to Pen 4	20
PEN #4 – move stock from Pen 4 into Chute	5
CHUTE – inspect/doctor stock from Inspection Alley and move through Back Alley to open pen Advanced handler sprays stock for parasites, Open handler inspects stock	20

GAASC Farm Trial 2 – Ducks

Time: 12 minutes, warnings at 7 and 3 minutes

Tie Breaker: #1 SORT, #2 GATHER Task

	Points
GATHER – send dog from spigot to gather stock into Large Pen Advanced handler stays at spigot until dog is sent, Open handler may move up halfway before sending dog	20
PEN #1 – move stock from Large Pen into Pen 1	10
SORT – sort 3 marked head into Pen 2 from Pen 1 then reunite all in Pen 1 Sort direction at handler’s discretion	25
PEN #2 – move stock from Pen 1 into Large Pen	5
TASK #1 BRIDGE – move stock over Bridge and clockwise through Underpass Advanced handler must stay behind Underpass until stock enters bridge, Open handler may move anywhere	20
TASK #2, FOOTBATH – move stock from Underpass thru Footbath Advanced handler must stay 5’ from Foot Bath until stock enters Footbath, Open handler may move anywhere	20
CHUTE – move stock into Chute, inspect than release through Large Pen into Pen 1	20
PEN #3 – move stock from Pen 1 into Pen 2	5
PEN #4 – move stock from Pen 2 into Alley	5



GAASC Farm Trial Duck Area

Gather ~85'

Large Pen - 40' x 90', 3' gate to Gather Area

Pen 1 - 8' x 10', 6' gate to Large Pen, 4' gate to Pen 2

Pen 2 - 8' x 10', 2' gate to Alley

Alley - 2' x 12', 2' gate to Pen 3

Pen 3 - 8' x 10', 5' gate to Large Pen

Bridge - 10' x 1.5'

Underpass - 2' x 2' x 2'

Footbath - 3' x 8'

Chute - 10' x 2' with 2' front & 3' back gates

Crate (Trial 2 only)

Wagon (Trial 2 only)

not to scale



VOLUNTEERS ARE NEEDED – IT DOESN'T HAPPEN WITHOUT YOU!
If you can steward a conformation class or assist at the stock arenas,
you will be loved and adored forever!
Please contact either show or trial secretary to sign up!

Turkey Trot
Obedience/Rally
November 2018

Toys for Tots
Conformation
December 2018

Paw Thaw
Obedience/Rally
January 2019

Spring Fling
Conformation/Stockdog
April 2019

~ Show Chairs and prize donations are needed for all shows. ~
Contact any BoD member for details

Sponsor a class or a whole show!
See your name in print!
Enjoy public recognition!
Contact any show secretary or committee member for details.