



<http://www.gaasc.org>

GAASC Spring Fling

April 4 – 7, 2019

1 ASCA Ranch Trial (cattle/sheep)

1 ASCA Farm Dog Trial (sheep/cattle/ducks/mixed)

4 ASCA Stockdog Trials

Hardrock Aussies Farm,

Cartersville, GA

Suzanne Kinman Memorial Award

presented to the dog shown in conformation and in the Stockdog trials with the highest arena herding score. In the event of a tie, Cattle score takes precedence. Please mark your conformation entry if your dog is also trialing.

\$50 Cash awarded to High Combined Farm Dog (Sponsored by Dean Jennings)

\$50 Cash awarded to High Combined Ranch Dog (Sponsored by Hardrock Aussies)

Most Promising Started Buckle

Sponsored by GAASC

High Combined Buckle

Sponsored by GAASC

Spring Fling Champion Buckle

Sponsored by Hardrock Farm

(High Combined Farm and Arena)



WE APPRECIATE TEAM PLAYERS!

We need people to help. This is a great way to learn something more about events you would like more experience with. Contact any event secretary & let them know you'd like to learn and help. We will have professional stock handlers for Cattle and Sheep, but we need timers and Duck wranglers. Thank you!

Stock Dog Course Director – Wendy Eldredge, wigglywendy@yahoo.com, 678-427-2713

Stockdog Committee: Cheryl Padgett, Renee Watson

- All trials will be conducted under the rules and regulations of ASCA Stockdog program. The rule book is available at <https://www.asca.org/Portals/0/StockdogRules.pdf> or call ASCA at 979-778-1082
- Current immunization record and/or certificate of health from your veterinarian may be requested.
- Disputes must be brought to the immediate attention of the course director and will in all cases follow the dispute regulations outlined in the ASCA stockdog rule book, pages 76-83.

Fellowship Dinner: Join us Saturday night for a Dutch treat dinner at one of the local Cartersville restaurants. As host, Cheryl Padgett (hardrockaussies@yahoo.com) will select the restaurant and make reservations. Please let Cheryl know if and how many in your party plan to attend.

Awards

Flat Ribbons award for 1st through 4th place, and qualifying score

Rosettes for High In Trial Started, Open and Advanced

Rosette for High Scoring Junior (showing in junior class only)

Rosette for New WTCH Title

Ranch Trial:

Flat Ribbons awarded for 1st through 4th place, and qualifying scores

\$50 Cash awarded to High Combined Ranch Trial Dog (sponsored by Hardrock Aussies)

Farm Dog Trial:

Flat Ribbons award for 1st through 4th place, and qualifying scores

\$50 Cash awarded to High Combined Farm Trial Dog (sponsored by Dean Jennings).

Ties will be broken by high score on the most complex stock common to the tied individuals (complexity=Cattle, sheep, mixed cattle/sheep, duck). If a tie still exists then the same criteria will be used for the highest score on the sort, then gather, then time. If there is no common stock, then the score with the most complex stock wins.

Award restrictions: For Exhibition Only dogs do not qualify for any awards. The word "Dog" indicates that it may be any herding breed or cross breed of herding origin as outlined and approved by ASCA.

NO PRE -ENTRIES ACCEPTED PRIOR TO A POSTMARK DATE OF February 1, 2019. PRE-ENTRIES MUST BE POST MARKED BY March 27, 2019. Random draw for run order, ALL trials, after pre-entry closes.

Entries must have clearly visible USPS postmark. No meter mail allowed. No DHL. UPS, telephone, email, or faxed entries will be accepted. Overnight entries accepted only if signature is waived. Incomplete entry forms including registration numbers and entries received without registration papers will NOT be accepted. Please make sure your entry form includes the dog's call name and your e-mail address. Registered owner of dog must submit entry check with their name on the check & send a copy of the dogs registration/tracking # form showing registered owner with the entry form. **Bitches in heat will run in order for all trials.**

For current ASCA Stockdog Rules, Stockdog Entry forms and ASCA Tracking Membership, please visit

<https://www.asca.org/home/business-office/rules-forms/>

Handler's Meetings each day at 8:00 am - Run order posted daily
 Specifications for Ranch and Farm Trials are listed at the end of this premium

Ranch Trials: 260 Old Wax Rd SE, Aragon, GA

Thursday, April 4, 2019 Judge: Brad Warren (CA)

Handler's meeting at 8:00 AM each day, trials begin immediately after completion of handlers meeting.

Cattle (Beef Mix), Sheep (Hair Mix),

Stock head count will be 10-Cattle, 10-Sheep,

Specifications for all Ranch Trials are listed at the end of this premium.

Entries will be limited to 8 Cattle, 8 Sheep.

A waiting list will be established for classes as they fill, watch the ASCA-L, Facebook Event page for entry updates.

Running order will be a random draw.

Farm Dog Trials:

Friday, April 5, 2019 Judge: Brad Warren (CA)

Handler's meeting at 8:00 AM each day, trials begin immediately after completion of handlers meeting.

Cattle (Beef Mix), ducks (Mix), mixed Cattle/Sheep, Sheep (Hair Mix),

Stock head count will be 5-Cattle, 5-Sheep, 5-Ducks and 5 each Cattle and sheep for the mixed.

Farm Dog Trial entries will be limited to 8 Cattle, 8 Ducks, 8 Mixed and 8 Sheep.

A waiting list will be established for classes as they fill, watch the ASCA-L, Facebook Event page for entry updates.

Running order will be a random draw and begin with the Advanced classes

Saturday & Sunday April 6 - 7 —Arena Trials

The Arena trials on Saturday and Sunday will run both Cattle and Ducks concurrently. Once both cattle and both ducks are complete there will be a lunch break while the sheep are set up. Entry limits per day for Arena trials will be 22-Cattle (11/trial), 35-Duck (17/trial), and 35-Sheep (17/trial). We will be running 3-5 head of Cattle, 3-5 head of Sheep and 5 head of Ducks.

Arena Trials:

Saturday, April 6, Arena Stock Dog Trials

Course B counter clockwise

		Judge	Registration	Judging
Trial #1	Sheep/Cattle	Robert Myrick (GA)	7:30-8:00 AM	8:30 AM
	Ducks	Brad Warren (CA)	7:30-8:00 AM	8:30 AM
Trial #2	Ducks	Robert Myrick (GA)	7:30-8:00 AM	8:30 AM
	Sheep/Cattle	Brad Warren (CA)	7:30-8:00 AM	8:30 AM

Sunday, Sept 14, Arena Stock Dog Trials

Course H counter clockwise

		Judge	Registration	Judging
Trial #1	Ducks	Robert Myrick (GA)	7:30-8:00 AM	8:30 AM
	Sheep/Cattle	Brad Warren (CA)	7:30-8:00 AM	8:30 AM
Trial #2	Sheep/Cattle	Robert Myrick (GA)	7:30-8:00 AM	8:30 AM
	Ducks	Brad Warren (CA)	7:30-8:00 AM	8:30 AM

Pre-entries for all Breeds open February 1, 2019 to all herding breeds. Pre-entries close March 27, 2019

Entries received after closing date may be subject to a waiting list. 'Day of entries' as available.

Please use the Official ASCA Entry Forms attached with this flier, or go to <https://www.asca.org/Portals/0/StockEntry.pdf>

Please print legibly and complete all portions of the entry form.

Bitches in heat will run in order,

Make checks payable to GAASC and mail all entries to: GAASC, c/o Cheryl Padgett, 445 Shinall Gaines Rd, Cartersville, GA 30121.

There will be a \$35.00 service charge for any returned checks. Refunds issued up to pre-entry deadline. Substitutions allowed with dogs that you own or co-own.

Ranch Trial	Pre-entry	Day of (if available)
Sheep	\$100	\$125
Cattle	\$100	\$125

Pre-Entry Discount Same dog ALL ARENA TRIALS/CLASSES \$425

Farm Dog Trial Friday April 5, 2019		
Class	Pre-entry	Day Of (If Available)
Sheep	\$50.00	\$60.00
Cattle	\$60.00	\$70.00
Ducks	\$35.00	\$45.00
Mixed	\$60.00	\$70.00
*All 4 Classes	\$175.00	\$210.00

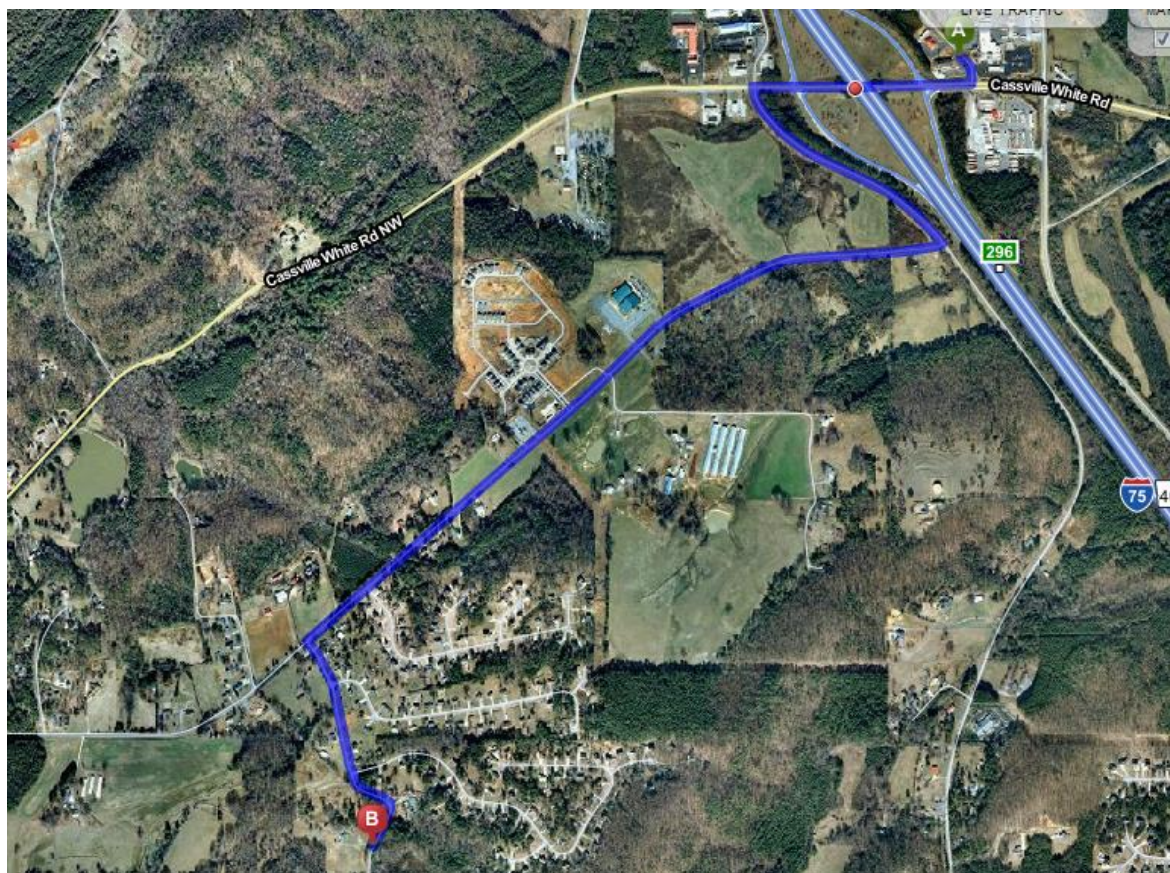
These are prices for Regular and FEO Farm Dogs

***Junior Handler must run in the Working Jr. Handler level to qualify or this discounted price.**
FACILITY: This is a private farm, so please treat it with respect. On Friday park in the lower pasture; Saturday and Sunday you park in either the lower or upper pasture. Toilet facilities will be on site.

Arena Trial April 6 - 7, 2018			
Class	Pre-entry	Day Of (If Available)	*Junior Handler
	Entries received before March 27, 2018	Entries received after March 27, 2018	
Sheep	\$45.00	\$55.00	\$15.00
Cattle	\$55.00	\$65.00	\$20.00
Ducks	\$35.00	\$45.00	\$10.00
*All 3 Classes per trial (any combination of dogs you own or co-own, same handler)	\$125.00	\$140.00	\$40.00

FACILITY: This is a private farm, so please treat it with respect. Do not park along the fence line on the left side of the driveway on Friday due to the influence you may inadvertently have on the stock. A toilet will be on site.

Directions to show site: Address for GPS 445 Shinall Gaines Rd NW Cartersville, GA 30121. From Interstate 75 take exit 296 (Cassville-White Rd.) turn West (from Atlanta it's a left turn) and turn left on first road—Peoples Valley Road (if you pass the gas stations you went too far). Go .4 miles and turn Right on Old Cass-White Road. Go 1.3 miles and turn Left onto Shinall Gaines Rd. Go about .2 miles; Farm is on right. Look for Black Gate.



OVERNIGHT PARKING IS NOT AVAILABLE

Camping:

KOA - 800 Cassville White Rd Nw, Cartersville, GA 30121 (770) 382-7330

Hotels -*Double check pet policy before booking your rooms.*

Baymont Inn & Suites – 11 Kent Dr NW, Cartersville, GA (770) 386-9259

Microtel Inn and Suite – 1348 Joe Frank Harris Pkwy, Cartersville, GA (678) 605-9331

Days Inn - 5618 Hwy. 20 Se, Cartersville, GA (770) 382-1824

Best Western Garden Inn & Suites - 5663 Highway 20 NE, Cartersville, GA (770) 386-1569

Hampton Inn - 5600 Hwy. 20 Se, Cartersville, GA (770) 382-8999

Knights Inn - 420 E Church St, Cartersville, GA (770) 386-7263

Quality Inn -235 S. Dixie Ave., Cartersville, GA (770) 386-1361

Red Roof Inn – 28 Hwy 20 Spur, I-75 exit 290, Cartersville, GA (770) 387-1800

Please, no dog washing in the motels, and please *pick up after your dog* at the motel and show grounds.

Veterinarian Services:

Westside Animal Hospital: Dr. Lisa Walker. 201 Doulthit Ferry Rd. Cartersville, GA 30120 (770) 607-3055. Emergency after hours (770) 547-9153 <http://www.cartersvillevets.com/westside-animal-hospital/>

Taff, William DVM Large Animal Veterinary Hospital. 1482 Old Alabama Road, Taylorsville, GA (770) 382-7475

GAASC Ranch Trial, April 4, 2019 – 160 Old Wax Road SE Aragon, GA

Time: Cattle 30 minutes, warnings at 10 and 5 minutes

Tie Breaker: #1 PASTURE, #2 ALL PEN WORK

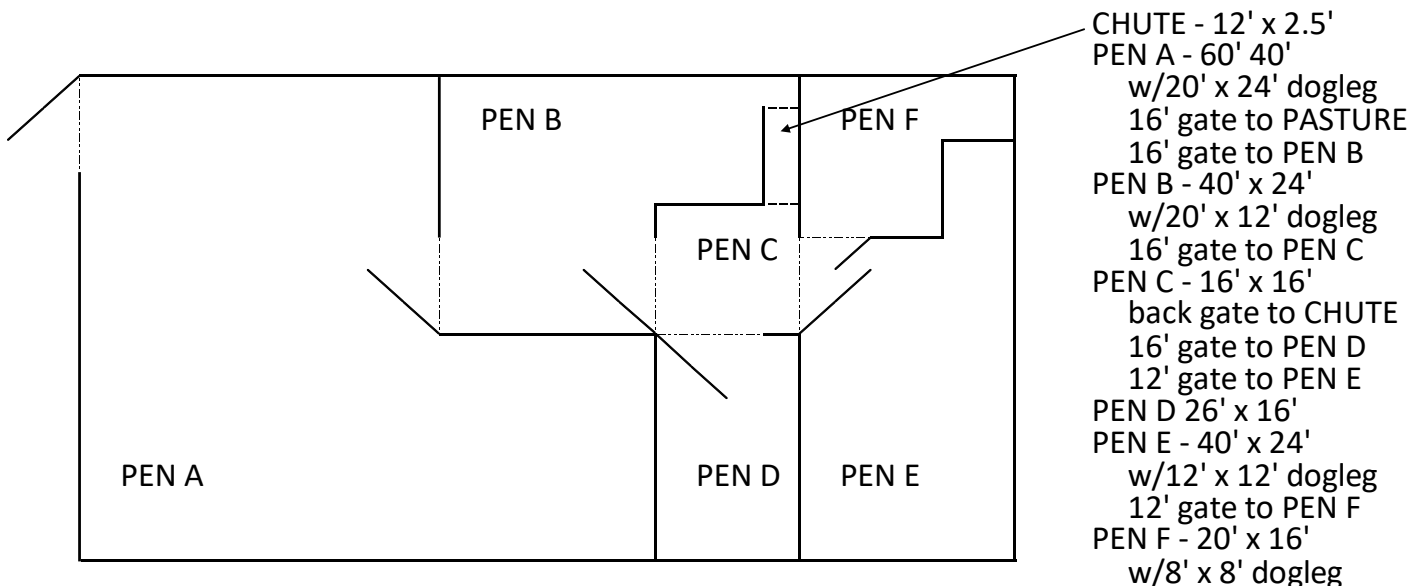
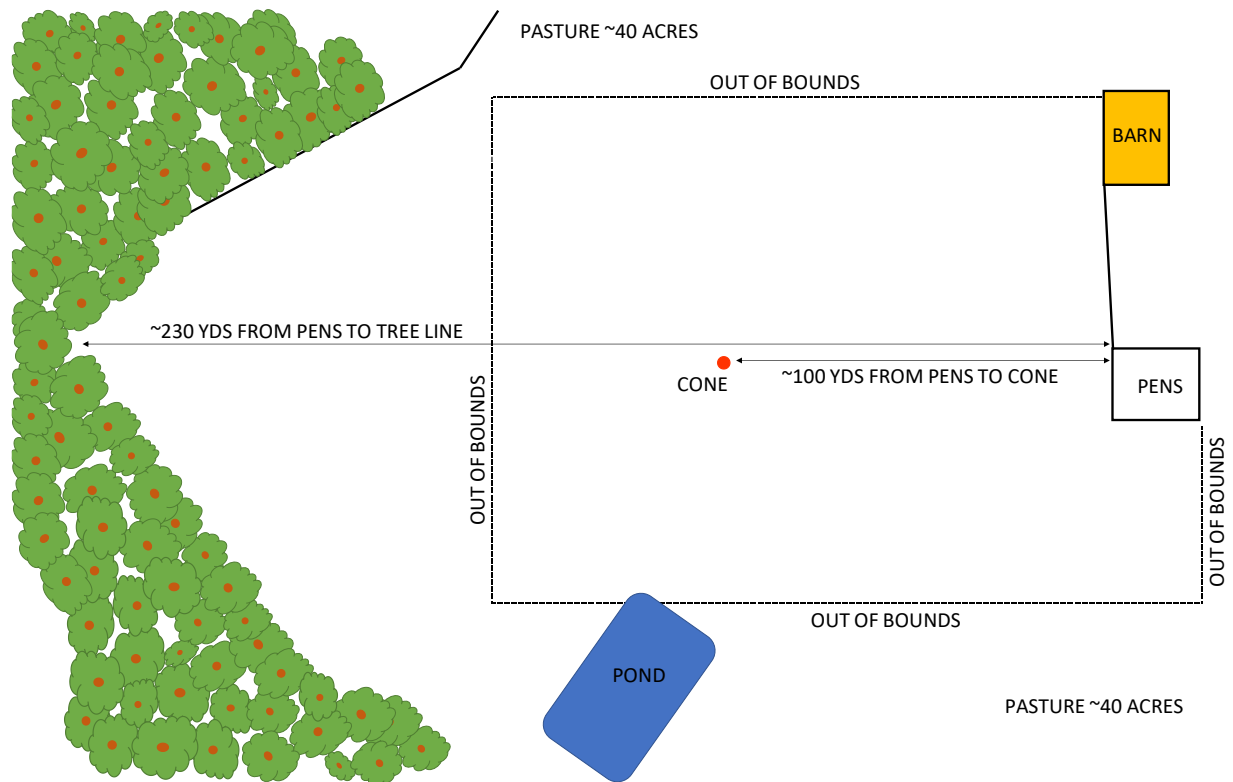
Sheep 25 minutes, warnings at 10 and 5 minutes

Tasks must be attempted in order. Handler is responsible for closing all gates including chute back gate and head gate.

Course will start with 10 head of stock in Pens A and D with all course gates closed.

Must earn 75 or more out of 100 possible points to receive a qualifying score.

Task	Points
PEN #1 – move stock from Pen A into Pasture	10
PASTURE – move stock out to and around cone in Pasture than back into Pen A	40
PEN #2 – move stock from Pen A into Pen B	5
SORT – sort 5 head from Pen B into Pen C, sort direction at handler's discretion	20
CHUTE – move 5 sorted head from Pen C through Chute and reunite with stock in Pen B	20
PEN #3 – move stock from Pen B through Pens C and E into Pen F	5



Farm Trial 04/05/2019

Judge Brad Warren

GAASC Farm Trial – Cattle

Time: 18 minutes, warnings at 10 and 3 minutes

Tie Breaker: #1 GATHER, #2 SORT

Tasks must be attempted in order. Handler is responsible for closing all gates including chute back gate and head gate. Course will start with 5 head of stock in Pens 6, 7 and 8 with all course gates closed.

Task	Points
PEN #1 – move stock from Pen Specified by Judge through Front Alley into Pen 1	6
PEN #2 – move stock from Pen 1 into Pasture	7
TASK #1, FIELD WORK – move stock to driveway end of Pasture, call dog off and move to cone Advanced handler drives stock, Open handler may drive or fetch	20
GATHER – send dog from cone to gather stock into Pen 1 Advanced handler stays at cone until dog is sent, Open handler may move up halfway before sending dog	20
PEN #3 – move stock from Pen 1 into Pen 2	6
SORT – sort 3 marked head into Pen 3 from Pen 2, then reunite all in Pen 2 Sort direction at handler's discretion	25
TASK #2, FOOTBATH – move stock from Pen 2 thru Footbath into Pen 4	20
PEN #4 – move stock from Pen 4 into Chute	6
CHUTE – inspect/doctor stock from Inspection Alley and move through Back Alley into open pen Advanced handler sprays stock for parasites, Open handler inspects stock	20

Farm Trial – Mixed Cattle & Sheep

Time: 20 minutes, warnings at 10 and 3 minutes

Tie Breaker: #1 GATHER, #2 SORT

Tasks must be attempted in order. Handler is responsible for closing all gates including chute back gate and head gate.

Task	Points
SHEEP PEN #1 – move stock from Judge Specified Pen to Pen 1	6
SHEEP TASK #1 TRAILER – move stock from Pen into Pasture and load stock into trailer Unload stock, move stock to Alley A gate, call dog off and move to cone Advanced handler must drive stock to Alley A gate, Open handler may drive or fetch stock to Alley A gate	20
SHEEP GATHER – send dog from cone to gather stock and move into Pen 1 Advanced handler stays at cone until dog is sent, Open handler may move up halfway before sending dog	20
SHEEP SORT – sort 3 marked head into Pen 2 from Pen 1, then reunite all in Pen 1 Sort direction at handler's discretion	25
SHEEP PEN #2 – move stock from Pen 1 to Open Pen	6
CATTLE PEN #3 – move stock from Pen Specified By Judge into Pen 2	7
CATTLE TASK #2, FOOTBATH – move stock from Pen 2 thru Footbath into Pen 4	20
CATTLE PEN #4 – move stock from Pen 4 into Chute Advanced handler stays at Footbath gate, Open handler may move anywhere in Pen 4	6
CATTLE CHUTE – inspect/doctor stock and move to open pen Advanced handler sprays stock for parasites, Open handler inspects stock	20

GAASC Farm Trial – Sheep

Time: 14 minutes, warnings at 7 and 3 minutes

Tie Breaker: #1 GATHER, #2 SORT

Tasks must be attempted in order. Handler is responsible for closing all gates including chute back gate and head gate. Course will start with 5 head of stock in Pens 6, 7, 8 and 9 with all course gates closed.

Task	Points
PEN #1 – move stock from Pen Specified by Judge through Front Alley into Pen 1	6
PEN #2 – move stock from Pen 1 into Pasture	7
TASK #1, FIELD WORK – move stock to driveway end of Pasture, call dog off and move to cone Advanced handler drives stock, Open handler may drive or fetch	20
GATHER – send dog from cone to gather stock into Pen 1 Advanced handler stays at cone until dog is sent, Open handler may move up halfway before sending dog	20
PEN #3 – move stock from Pen 1 into Pen 2	6
SORT – sort 3 marked head into Pen 3 from Pen 2, then reunite all in Pen 2 Sort direction at handler's discretion	25
TASK #2, FOOTBATH – move stock from Pen 2 thru Footbath into Pen 4	20
PEN #3 – move stock from Pen 4 into Chute	6
CHUTE – inspect/doctor stock from Inspection Alley and move through Back Alley into open pen Advanced handler sprays stock for parasites, Open handler inspects stock	20

GAASC Farm Trial – Ducks

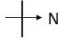
Time: 12 minutes, warnings at 7 and 3 minutes

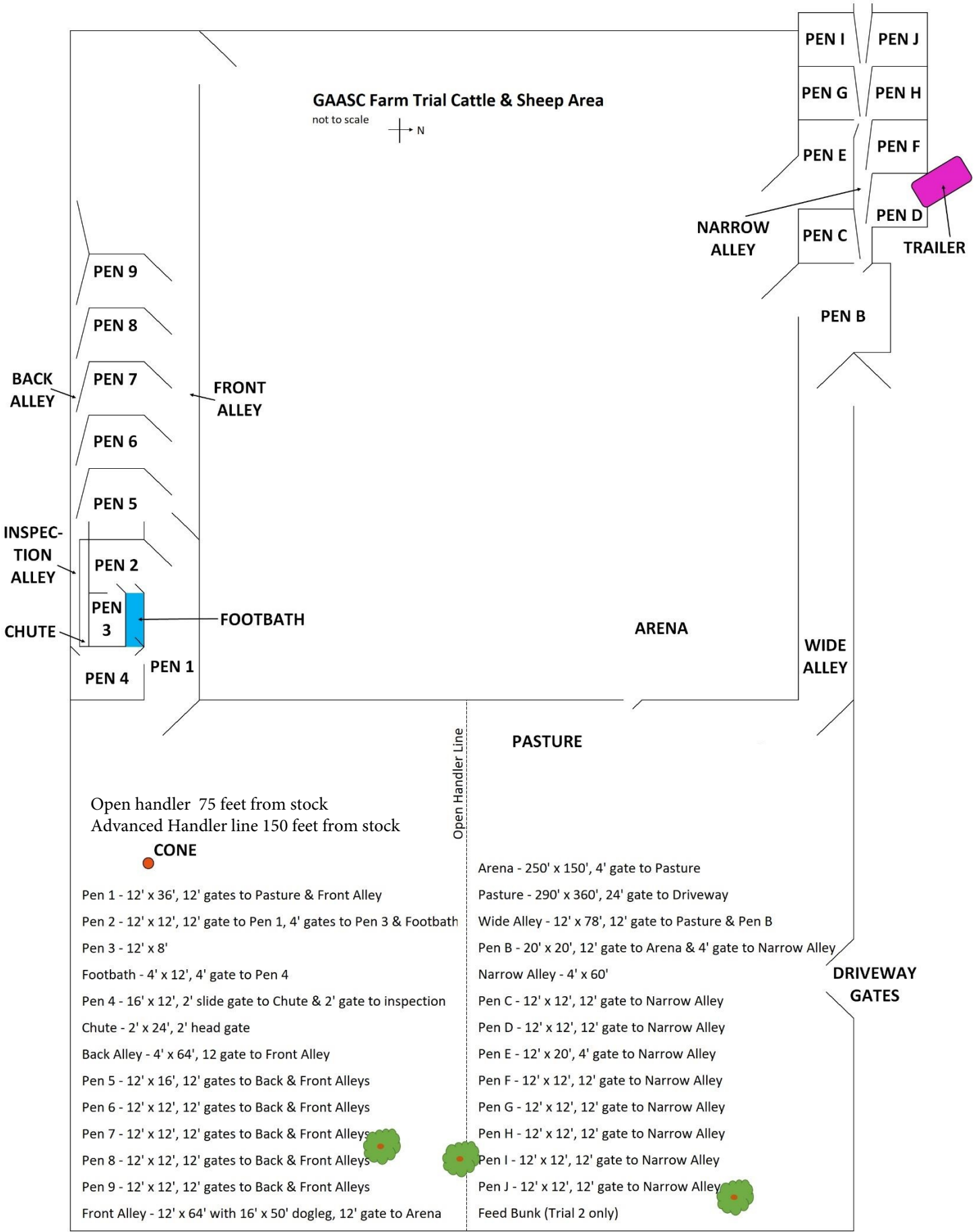
Tie Breaker: #1 GATHER, #2 SORT

Tasks must be attempted in order. Handler is responsible for closing all gates including chute back gate and head gate. Course will start with 5 head of stock in Gather basket and all gates closed.

Task	Points
GATHER – send dog from spigot to gather stock into Large Pen Advanced handler stays at spigot until dog is sent, Open handler may move up halfway before sending dog	20
PEN #1 – move stock from Large Pen into Pen 1	10
SORT – sort 3 marked head into Pen 2 from Pen 1 then reunite all in Pen 1 Sort direction at handler’s discretion	25
PEN #2 – move stock from Pen 1 into Large Pen	5
TASK #1 BRIDGE – move stock over Bridge and clockwise through Underpass Advanced handler must stay behind Underpass until stock enters bridge, Open handler may move anywhere	20
TASK #2, FOOTBATH – move stock from Underpass thru Footbath Advanced handler must stay 5’ from Foot Bath until stock enters Footbath, Open handler may move anywhere	20
CHUTE – move stock into Chute, inspect than release through Large Pen into Pen 1	20
PEN #3 – move stock from Pen 1 into Pen 2	5
PEN #4 – move stock from Pen 2 into Alley	5

GAASC Farm Trial Cattle & Sheep Area

not to scale 



Open handler 75 feet from stock
Advanced Handler line 150 feet from stock

CONE

- Pen 1 - 12' x 36', 12' gates to Pasture & Front Alley
- Pen 2 - 12' x 12', 12' gate to Pen 1, 4' gates to Pen 3 & Footbath
- Pen 3 - 12' x 8'
- Footbath - 4' x 12', 4' gate to Pen 4
- Pen 4 - 16' x 12', 2' slide gate to Chute & 2' gate to inspection
- Chute - 2' x 24', 2' head gate
- Back Alley - 4' x 64', 12 gate to Front Alley
- Pen 5 - 12' x 16', 12' gates to Back & Front Alleys
- Pen 6 - 12' x 12', 12' gates to Back & Front Alleys
- Pen 7 - 12' x 12', 12' gates to Back & Front Alleys
- Pen 8 - 12' x 12', 12' gates to Back & Front Alleys
- Pen 9 - 12' x 12', 12' gates to Back & Front Alleys
- Front Alley - 12' x 64' with 16' x 50' dogleg, 12' gate to Arena

Open Handler Line

PASTURE

- Arena - 250' x 150', 4' gate to Pasture
- Pasture - 290' x 360', 24' gate to Driveway
- Wide Alley - 12' x 78', 12' gate to Pasture & Pen B
- Pen B - 20' x 20', 12' gate to Arena & 4' gate to Narrow Alley
- Narrow Alley - 4' x 60'
- Pen C - 12' x 12', 12' gate to Narrow Alley
- Pen D - 12' x 12', 12' gate to Narrow Alley
- Pen E - 12' x 20', 4' gate to Narrow Alley
- Pen F - 12' x 12', 12' gate to Narrow Alley
- Pen G - 12' x 12', 12' gate to Narrow Alley
- Pen H - 12' x 12', 12' gate to Narrow Alley
- Pen I - 12' x 12', 12' gate to Narrow Alley
- Pen J - 12' x 12', 12' gate to Narrow Alley
- Feed Bunk (Trial 2 only)

DRIVEWAY GATES

GAASC Farm Trial Duck Area

- Gather ~85'
 - Large Pen - 40' x 90', 3' gate to Gather Area
 - Pen 1 - 8' x 10', 6' gate to Large Pen, 4' gate to Pen 2
 - Pen 2 - 8' x 10', 2' gate to Alley
 - Alley - 2' x 12', 2' gate to Pen 3
 - Pen 3 - 8' x 10', 5' gate to Large Pen
 - Bridge - 10' x 1.5'
 - Underpass - 2' x 2' x 2'
 - Footbath - 3' x 8'
 - Chute - 10' x 2' with 2' front & 3' back gates
 - Crate (Trial 2 only)
 - Wagon (Trial 2 only)
- not to scale

