

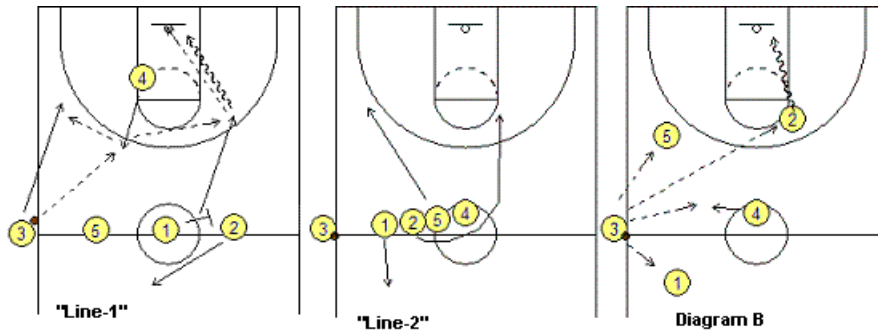
## **Sideline Out-of-Bounds Plays**

From the Coach's Clipboard Basketball Playbook, @ <http://www.coachesclipboard.net>

Here are a few sideline out-of-bounds plays.

### **Sideline Play, "Line-1"**

This sideline play can be used as a standard sideline play or a half-court, last second play when we only have a few seconds left on the clock. O4 starts low and sprints up to receive the pass from O3. Meanwhile, O1 screens for O2 and after screening, cuts hard to the back-side wing for a quick pass from O4 and the shot, or lay-up, depending on how much time is left. After in-bounding the ball, O3 cuts to the left wing and could also get the pass and last-second shot. If both wings are covered, O4 may have to take the shot. If time is not a factor, O2 is our safety pass in the back-court.



### **Sideline Play, "Line-2"**

This sideline play also uses a "line" set (see diagrams above), and tries to get a lob pass to O2 going to the hoop. Of course, you can change this to fit your own personnel. O1 cuts into the back-court as our safety outlet. O2 cuts hard around O5 and O4. O3 looks to make the lob pass over the top to O2 cutting to the hoop. After O2 cuts, O5 moves to the ball-side wing area and O4 cuts straight toward the ball. If the pass goes to O1, O5 or O4, then just set up in your usual half-court offense.

### **Sideline Play "Pairs"**

The pairs are O1 and O5, and O2 and O4. O4 screens for O2 and O2 comes over the top of the screen (especially if the ball is near half-court). If the ball is being in-bounded partway up the sideline, then O2 might cut below the screen (baseline). O3 looks to O2 for the first option. If open, O2 could shoot the 3-point shot, or shot-fake and shoot the jumper. Or O2 could pass inside to O4 posting uu... often a mis-match if the defense switched a "big for a little". O5 screens for O1 and O1 is our safety pass if O2 is not open. O5 could even be open for the pass inbounds.

