



Leaders In Transformational Education (LITE)



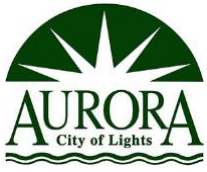
Community Youth Services 2018 Resource and Referral Guide Service Area: Aurora, IL

Funded in part by the Department of Human Services

The CYS Resource and Referral Guide is a description of agencies providing services in or near the designated service area. The referral guide is designed to familiarize youth and families with information regarding referral sources and the referral process for them.

Updated August 2018

ABOUT AURORA, IL



Aurora, a suburb of [Chicago](#), is a city predominantly in [Kane County](#) and [DuPage County](#), with portions extending into [Kendall](#) and [Will](#) counties. It is located in the outer region of [Greater Chicago](#) in the [U.S. state of Illinois](#). It is the [second most populous city in the state](#), and the [114th most populous city in the country](#). The population was 197,899 at the [2010 census](#), and was estimated to have increased to 199,963 by July 2013. Once a mid-sized manufacturing city, Aurora has grown tremendously since the 1960s. Founded within Kane County, Aurora's city limits and population have since expanded into DuPage, Will, and Kendall counties. Between 2000 and 2003, the [U.S. Census Bureau](#) ranked Aurora as the 34th fastest growing city in the United States. From 2000 to 2009, the U.S. Census Bureau ranked the city as the 46th fastest growing city with a population of over 100,000.

In 1908, Aurora officially adopted the nickname "City of Lights", because it was one of the first cities in the United States to implement an all-electric street lighting system in 1881.^[8] Aurora's historic downtown is located on the [Fox River](#), and centered on [Stolp Island](#). The city is divided into three regions, The West Side, located on the west side of the Fox River, The East Side, located between the eastern bank of the Fox River and the Kane/DuPage County line, and the Far East Side/Fox Valley, which is from the County Line to the city's eastern border with [Naperville](#).

ABOUT LEADERS IN TRANSFORMATIONAL EDUCATION (LITE)

Leaders in Transformational Education (L.I.T.E.) work with opportunity youth and their families. We partner with community stakeholders gathering information to identify the unique characteristics of opportunity youth within your community. The L.I.T.E. model is tailored to meet needs and build strengths. We align strategies with our mission and stakeholder goals. Our approach is real world, project -based learning; building academic, employment, and social emotional knowledge, skills, and abilities. The L.I.T.E. model is comprehensive, wrapping youth with supports, education, and training to achieve their goals.



TABLE OF CONTENTS

| | |
|--|-----------|
| <i>About Aurora, IL</i> | <i>1</i> |
| <i>About Leaders In Transformational Education (LITE).....</i> | <i>2</i> |
| <i>Referral vs. Referral System</i> | <i>4</i> |
| <i>EDUCATION</i> | <i>5</i> |
| <i>WORKFORCE DEVELOPMENT</i> | <i>8</i> |
| <i>HEALTH & WELLNESS</i> | <i>10</i> |
| <i>YOUTH SERVICES</i> | <i>14</i> |
| <i>Public Libraries</i> | <i>18</i> |
| <i>Great Community Resources</i> | <i>18</i> |
| <i>FAITH-BASED INSTITUTIONS.....</i> | <i>19</i> |

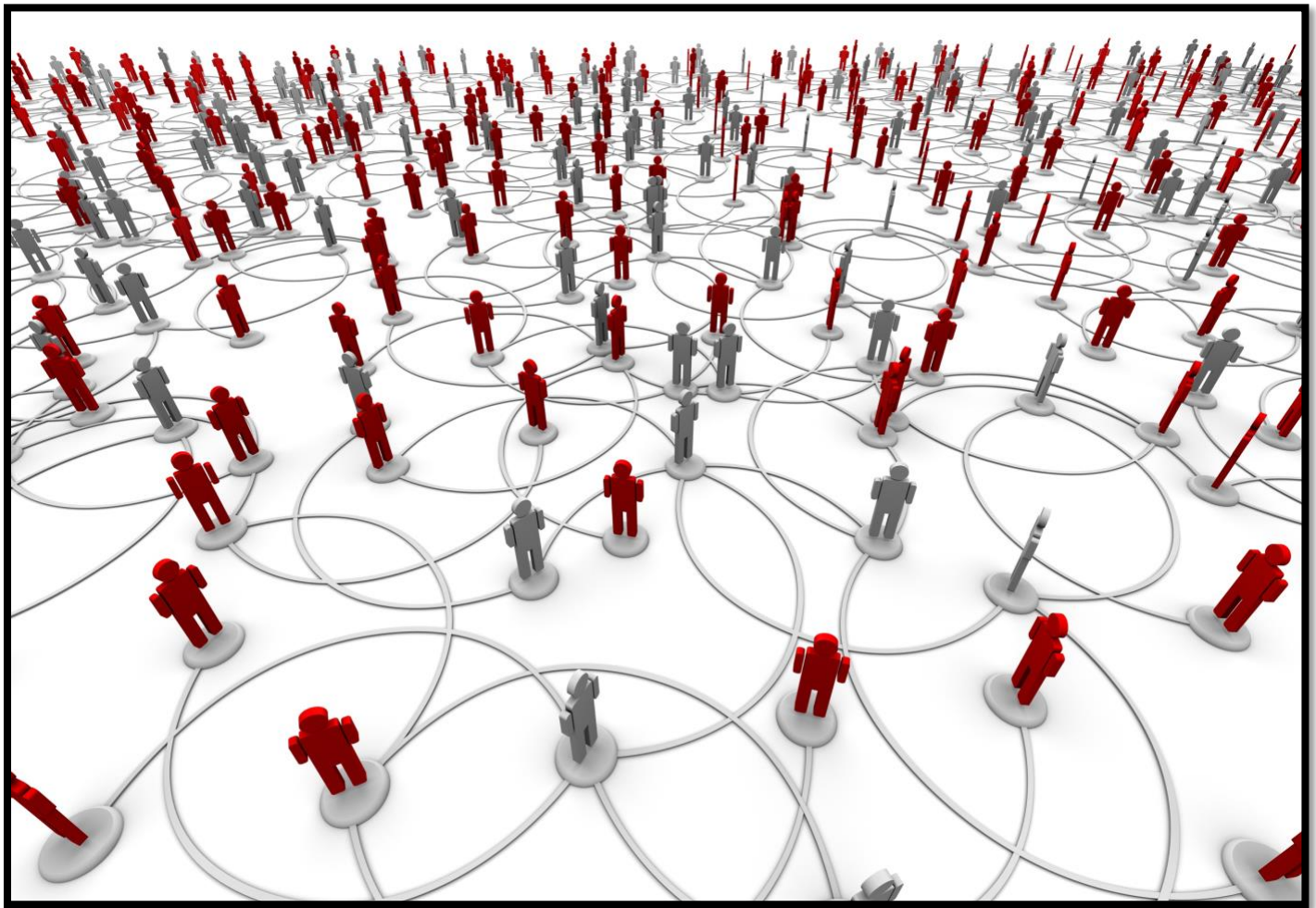
REFERRAL VS. REFERRAL SYSTEM

Referral:

The term referral is used to describe a process of assisting youth in obtaining preventative health services through a variety of activities, including, but not limited to, connecting students to youth-friendly providers and support services

A referral system:

A set of resources and processes to increase youth awareness of school-based and community-based health service providers, increase referral of youth to school-based and community-based health service providers, and increase the number of adolescents receiving youth-friendly health care services. LITE Leaders negotiate a referral system for all community residents.



www.liteleaders.org

EDUCATION



www.liteleaders.org

| Name of Provider and Location | Population & Services | Hours of Operation | Referral process | Total Capacity |
|--|--|---|---|-----------------------|
| Leaders In Transformational Education (LITE) 31 W. Downer Place, suite 101 Aurora, IL. 60506 | Ages 16-24 Serving to get drop-out and disconnected youth back on track to completing their education | 9:00 am – 9:00 pm | Contact LITE for referral to community resources | 60 youth |
| College of Dupage 425 Fawell Blvd. Glen Ellyn 60137 1223 Rickert Drive, Naperville, IL 60540 | Serving high school and older adults. GED PREP ESL | M-H 7:30 am – 10:00 pm F 7:30 am – 5:00 pm S 7:30 am – 3:00 pm | Open registration during | Unknown |
| Waubensee Community College 18 S. River Street, Aurora, IL 60506 | Adult Education Free GED ESL Workforce Education | 7:00 am – 9:30 pm | Open Registration during semester start | Unknown |
| Aurora University 347 S. Gladstone Aurora, IL 60506 -4892 | Ages 17 and older / males and females Adult Education College credit courses | 7:00 am – 6:00 pm | Open Registration | Unknown |
| Aurora East School District 131 Extensions 1685 N. Farnsworth Ave. Aurora, IL 60505 630-299-3084 | Alternative Education services for truant youth | 7:55 am – 3:05 pm | School District 131 makes referrals to the Extension campus | Unknown |
| Aurora East High School 500 Tomcat Lane, Aurora, IL corner of Smith Boulevard and Fifth Ave. | Public four-year high school | 7:55 am – 3:05 pm | There are 7 Aurora feeder schools to East Aurora High School | Unknown |
| Regional Office of Education (ROE) 28 N. 1 st . Street, Geneva, IL 60134 630-232-5955 | Truancy Prevention Homeless Education Regional Safe School Home Schooling Juvenile Justice Center Student Loan Forgiveness | 8:00 am – 5:00 pm | Contact ROE | Unknown |
| Communities in Schools 501 College Ave. cis@cisaurora.org Phone: 630-844-2662 | Elementary Middle School High School / After-school | 9:00 – 5:00 pm | School personnel refer youth to communities in schools for services | Unknown |

| | | | | |
|--|---|--|--|--|
| | Services to coordinate social services and educational needs located in schools for a at risk student from dropping out | | | |
|--|---|--|--|--|

WORKFORCE DEVELOPMENT



www.liteleaders.org

| Name of Provider and Location | Population & Services | Hours of Operation | Referral process | Total Capacity |
|-------------------------------|-----------------------|--------------------|------------------|----------------|
|-------------------------------|-----------------------|--------------------|------------------|----------------|

| | | | | |
|--|---|---|---|--|
| Bridging the GAP Aurora East High Sc500 Tomcat Lane, Aurora, IL corner of Smith Boulevard and Fifth Ave. | Workforce Education Mentoring Life Skills Education | 7:30 am – 4:00 pm | Contact BTG Coordinator directly | Open |
| DVA Leadership & Development Training Consultants 123 Forestview Lane Aurora, IL 773-671-3315 | Professional Development for youth workers Workforce Development / Job Readiness Life Skills Education (youth) Soft Skills Education (youth) | 7:00 am – 7:00 pm | Contact DVA for scheduling | Professional development for youth workers (75) Youth Education (50 per training cycle) Motivational Speaking engagements on Leadership Workforce Readiness Community Organizing |
| Waubansee Community College Adult Ed. Department 18 S. River Street, Aurora, IL 60506 | 17 yrs. and older Vocational certifications College courses (credit and non-credit) Workforce Education | 7:30 am – 9:00 pm | Direct Contact | Unknown |
| BMO Harris Aurora Campus 1252 N. Lake Street 630-236-9200 www.bmoharris.com | Community Outreach Community-based Education / Financial Literacy | 8:00 – 4:00 pm | Contact BMO Harris Aurora Branch and ask for the community outreach staff | Up to 30 per session |
| Quad County Urban League 1685 N Farnsworth Ave, Aurora, IL 60505 630-851-2203 www.qcul.org | Construction skills development Youth workforce development Nicor Gas Career Academy Solar Energy Job Training UPS plant engineer mechanic training | Monday – Friday Generally 8:00 – 4:00 | Call or visit website to fill out a contact form. | Unknown at this time |
| Central State SERS WIOA – Youth Program 31 W. Downer Place, suite 308 Aurora, IL. 60506 708-715-5300 | Job placement Occupational skills training Career planning Work readiness workshop | Monday- Friday 9:00 – 5:00 | Contact Jose Zambrano | unknown |

HEALTH & WELLNESS



www.liteleaders.org

| Name of Provider and Location | Population & Services | Hours of Operation | Referral process | Total Capacity |
|---|---|--|--|--|
| Aurora University Wellness Center 1400 Southlawn Phone: 630-844-5434 wellness@aurora.edu | The AU Wellness Center provides college-specific nursing care and promotes health, wellness and preventive care for the Aurora University community. Care received in the Wellness Center is nurse-directed and based on physician-approved clinical protocols. Services are free and available to all currently enrolled AU students. However, there is a small fee for protocol-specific prescription medication offered. Counseling Services Emergency and after-hours care Immunization Records | Appointments are recommended, but students may also be seen as "walk-ins" during office hours on a first-come, first-served basis. Monday-Friday 8:30 am – 4:00 pm | Walk-in Appointment Contact via phone and/or email | AU students only |
| Hessed House 659 South River St. Aurora, IL 60506 630-897-2156 | PADS overnight Emergency Shelter providing food, shelter, laundry and on-site counseling Day-time drop in center Transitional Living Community provides temporary on-site housing and opportunity for up to 52 homeless persons Hessed House sees 16 newly homeless individuals each week – that's one new homeless individual every 8 1/2 hours. Hessed House strives to get 16 or 17 individuals out of homelessness each week. Mental health, substance abuse, medical, employment assistance | Hours: 7pm – 7 am Shelter programs Everyday 659 S. River Street Office: 9:00 am – 5:00 pm | Contact Hessed House for Assessment | 52 beds 500 men, women and children weekly 88 mats for overnight shelter |
| Kane County Health Department 1340 Highland Ave., Aurora, IL 60506 Phone: 630-208-3801 www.Kanehealth.com | Organized by 3 divisions -Division of Health Promotion -Division of Disease Prevention -Division of Community Health Resources 1. Monitor health status and understand health issues facing the community. 2. Protect people from health problems and health hazards. 3. Give people the information they need to make healthy choices. 4. Engage the community to identify and solve health problems. 5. Develop public health policies and plans. 6. Enforce public health laws and regulations. 7. Help people receive health services. 8. Maintain a competent public health workforce. 9. Evaluate and improve programs and interventions. 10. Contribute to and apply the evidence base of public health. | Monday – Friday 8:30 am – 4:30 pm | Contact directly via phone | |

| | | | | |
|---|--|---|--|--|
| Provena Mercy Center – Behavioral Health Services 1325 N. Highland Ave., Aurora, IL 60506 630-859-2222 www.provena.org | Specialties Include: Intensive outpatient therapy, addiction assessments for adults & adolescents, fully accredited school for inpatient children & teens, entire life span behavioral health services (ages 3 through older adult) Services Include: Highly structured adult, child, & adolescent intensive outpatient services, individual & group intensive outpatient counseling for adults, children, & adolescents. Adult, child, & adolescent inpatient, partial hospitalization for adults, children & adolescents; Intensive outpatient for older adults, and intensive outpatient program for cognitively impaired older adults, child development program for ages 3-12 for children struggling with depression, anxiety, behavioral problems and attention disorders, detox, inpatient services, intensive outpatient program for adult addicts, and inpatient addiction program for adults 18 & older. | 24-hour outpatient psychological assessment | Contact directly for an assessment | intensive outpatient program for cognitively impaired older adults, child development program for ages 3-12 for children struggling with depression, anxiety, behavioral problems and attention disorders, detox, inpatient services, intensive outpatient program for adult addicts, and inpatient addiction program for adults 18 & older. |
| Mutual Ground 418 Oak Avenue, Aurora 630-897-0084 | Services to address domestic violence and sexual assault provide prevention training and intervention free of charge. | Monday – Friday 9:00 am – 5:00 pm | Refer Male/Female Adolescents, adults and families | 28 bed shelter provides referrals to other locations. |
| VNA Health Care 400 N. Highland Ave. Aurora, IL 60506 630-892-4335 for house calls, press 1 for English, then choose option 6 | comprehensive primary care and community health services Family practice Pediatrics OB/GYNE Behavioral Health Community Health Flu Shots, WIC, Healthy Families, Prenatal/Family Case Management, Blood Pressure/Wellness Clinic / Community Resources VNA Mobile Health Clinic | Monday – Friday 9:00 am – 5:00 pm | Same day walk-in care for your family is available Call for appointment | Unknown |
| Breaking Free 120 Gale Street Aurora, IL 630-897-1003 bilingual services | Substance Abuse Counseling, DUI Dual diagnoses counseling Mental health services Parent Education Classes | Monday – Friday 9-5 pm | Walk-in Direct Contact | Unknown |
| Family Counseling Services of Aurora 70 S. River Street 630-844-2662 payment or services bilingual service available | Behavioral Health Services to include psychiatric, substance abuse (teens and adults) Serving youth 6-17 in need of additional support because of emotional and/or behavioral problems. | No hours listed | Unknown | By appointment |

| | | | | |
|---|---|--|----------------|---------|
| | Independent Living Community Living Training Social Skills / Workforce employment Skills Positive leisure activities Money management | | | |
| Gateway Foundation 400 Mercy Lane Aurora, IL 877-505-4673 | Drug rehabilitation and alcohol treatment center, Residential, outpatient, bridge and aftercare programming. Adult men, women | 24-hours residential | Unknown | Unknown |
| Life Spring through Wayside Cross Ministries 215 E. New York Street Aurora, IL 60505 630-892-4239 | Housing for women who lost housing due to substance abuse and financial issues. Services include: GED Prep Computer Skills, Finances, Cooking and Transitional Living | Monday 9am – 6 pm Tuesday – Friday 9am – 7pm Saturday 9am – 5 pm | Direct contact | Unknown |
| Lutheran Family Services 120 Gale Street Aurora, IL 60506 630-896-2714 | Child Welfare Services Foster Care | Monday – Friday 9am – 5pm | | Unknown |
| Planned Parenthood 305 E. New York st. Aurora, IL. 60504 630-585-0500 | Affordable Health Care Sex Education Abortion services Birth control | | | |

YOUTH SERVICES



www.liteleaders.org

| Name of Provider and Location | Population & Services | Hours of Operation | Referral process | Total Capacity |
|--|---|---|---|----------------|
| Family Focus 550 Second Ave. Aurora, IL | Parents as teachers for parents of children 0-30, youth development 1 st . grade to 12 th . prep for college, after school program, family advocacy, support and resources for at risk and DCFS families, Parents too soon-parenting classes, parental mentoring Immigration services | Monday – Friday 9:00 – 5:00 pm | Direct contact | Unknown |
| African American Men of Unity 30 S. Stolp Ave. Suite 311 630-606-1910 | Serving youth 7-18 years old. Male/Female Mentoring, Anger Management, Conflict Resolution, College Readiness, Cultural Enrichment Field Trips, Career Education & Development | Daily Afterschool hours Event hours as scheduled | Contact AAMOU directly Via Aurora Township | Unknown |
| Triple Threat Mentoring 100 So. River Road Aurora, IL 630=570-9506 | Serving Male and Female 17 and older Mentoring Elementary and Middle School programs available Athletics, Art, Academics | Hours of Operations vary | Direct Contact | Unknown |
| | | | | |
| 360 Degree youth services | | | | |
| United Way | | | | |
| Quad County Urban League 1685 N. Farnsworth Aurora, IL 60505 | The Quad County Urban League (QCUL) is a tax-exempt, 501(c)(3) non-profit organization. The mission of the QCUL is to secure equal opportunities for all disadvantaged persons and people of color, including African Americans, women and persons | | | |

| | | | | |
|---|--|--|---|--|
| 630-t851-2703 | <p>with disabilities. The Quad County Urban League is dedicated to advocating and establishing programs that facilitate the social and economic growth of residents in the communities of DuPage, Kane, Kendall and Will Counties in Illinois. The Quad County Urban League is an affiliate of the National Urban League and a member agency of the United Way.</p> <p>Programs: Workforce Development Education</p> | | | |
| <p>Youth Services Bureau of Illinois Valley www.ysbiv.org 630-820-6303 1700 Farnsworth Ave. Aurora, IL</p> <p>Youth Services Bureau of Illinois Valley www.ysbiv.org 630-820-6303 1700 Farnsworth Ave. Aurora, IL</p> | <p>FOSTER CARE A program for children in state custody who are unable to remain safely in their home.</p> <p>CHILDREN FIRST</p> <p>HOPE HOUSE Provides supervised visitation for children in homes with a history of domestic violence, sexual abuse, stalking, or child abuse.</p> <p>RUNAWAY AND HOMELESS YOUTH A 24 hour crisis intervention program which provides services to runaway youth, and youth that are locked out of their homes or refuse to return home.</p> <p>STREET OUTREACH</p> <p>TRANSITIONAL LIVING PROGRAM</p> <p>REDEPLOY ILLINOIS Redeploy Illinois was created in 2004 by the General Assembly to provide services to youth at risk of commitment to the Illinois Department of Corrections.</p> <p>SECOND CHANCE Second Chance provides services to youth who would otherwise be removed from their homes and communities due to high-risk, unmanageable behavior.</p> <p>SOLUTIONS COUNSELING Offers intensive out-patient and mental health therapy treatment by Master degreed and licensed therapists trained in child and family centered intervention; Includes individual, marital and family counseling.</p> <p>INTACT FAMILY SERVICES A program established by the Department of Children and Family Services (DCFS) meant to provide reasonable efforts to preserve families to enable children to remain safely at</p> | | <p>Hope House: The focus is to keep all parties safe. Referrals are made by courts, law enforcement & self. (Available in LaSalle county)</p> <p>Intact: Referrals by DCFS</p> <p>REDEPLOY: Referrals are made by the LaSalle County Juvenile State's Attorney's office and the LaSalle Juvenile Probation Department.</p> <p>SECOND CHANCE Referrals are made by the LaSalle County Juvenile State's Attorney's office and the LaSalle Juvenile Probation Department.</p> <p>Counseling is available for Children and Adults and most insurance companies are accepted. (Available in the following offices: LaSalle, Ottawa, Princeton and Streator).</p> <p>Referrals are made by the following: DCFS, Probation, self, Churches and Community. (Available in Rockford, Freeport and Belvidere)</p> | |

| | | | | |
|---|--|-----|-----------------------------------|--|
| | <p>home and avoid separation and/or placement of the children.</p> <p>YOUTH GIVING BACK Community Services/Restitution works closely with local courts, Peer Courts, Police Departments and Juvenile Probation to involve young people in meaningful work projects to “pay back” their community for petty delinquent offenses. Available in LaSalle and DePue.</p> <p>HISPANIC CENTER Provides families with information in Spanish and links them to services in Spanish. Includes collaboration with Illinois Valley Community College literacy programs. (Available in Bureau, DeKalb, Grundy, LaSalle, Lee and Putnam counties)</p> <p>YSB CHILD DEVELOPMENT CENTER A child day care facility licensed by DCFS, the National Council of Accreditation for Children and Family Services, and QRS. Accepts children ages 15 months to 6 years of age. (Located in the city of LaSalle)</p> <p>TRADITIONAL PARENTING PROGRAM Provides parents the opportunity to enhance their parenting skills, set appropriate expectations and limits. Clients must be 21 years of age or older. Referrals are made by the following: DCFS, Probation, self, Churches and Community. (Available in Rockford, Freeport and Belvidere)</p> <p>OUTREACH COUNSELING</p> <p>INTENSIVE PLACEMENT STABILIZATION</p> | | | |
| <p>Fox Valley 1-2-1 Mentoring Family Counseling Services 630-844-2662 eward@aurorafcs.org</p> | <p>Personalized mentoring local youth who struggle to succeed because of emotional and/or behavioral problems.</p> <ul style="list-style-type: none"> ▪ Independent living skills ▪ Community living Skills ▪ Social skills ▪ Workforce education ▪ Money management | N/A | No referral information available | |

PUBLIC LIBRARIES

| Name of Provider and Location | Population & Services | Hours of Operation | Referral process | Total Capacity |
|--|-----------------------|--------------------|------------------|----------------|
| Aurora Public Library Santori 101 S. River Street Aurora, IL 630-264-4100 | Community wide | 8:00 am – 8:00 pm | Open door | Over 450 |
| Aurora Public Library Eola Road Branch 555 S. Eola Road, Aurora, IL 630-264-3400 | Community wide | 9am – 8 pm | Open door | |
| Aurora Public Library West Branch 233 S. Constitution Drive Aurora, IL 6320-264-3600 | Community wide | 9am – 6pm | Open door | |
| | | | | |

GREAT COMMUNITY RESOURCES

| Name of Provider and Location | Population & Services | Hours of Operation | Referral process | Total Capacity |
|--|---|---|------------------|----------------|
| Interfaith Food Pantry Address: 1110 Jericho Rd, Aurora, IL 60506 Phone: (630) 897-2127 | Community food pantry | Hours: Closed today Wednesday Closed Thursday 10AM–2PM Friday Closed Saturday Closed Sunday Closed Monday 10AM–2PM Tuesday 10AM–2PM | Walk in | Open |
| Society of St. Vincent DePaul Our Lady of Good Counsel Conference 615 Talma Street 630-236-1285 | Community residents in need of referrals and connections to local services to help the poor and assist with local organization support. | N/A | Direct Contact | No limit |

FAITH-BASED INSTITUTIONS

| Church Name | Community Resources |
|--|---|
| Our Lady of Mercy Catholic Church 701 S. Eola Road, Aurora, IL 60504 630-851-3444 www.olmercy.com | Parish Resource Library Religious Education Singles / Married couple's ministry |
| Trinity Episcopal Church 218 E. Benton St. Aurora, IL 60505 630-897-7283 www.trinityaurora.org | Prayer Chain Services Religious Resources for Gays and Lesbians |
| Annunciation Catholic Church 1820 Church Road, Aurora, IL 630-851-1436 | Annunciation BVM Catholic Elementary School |
| St. Therese of Jesus Catholic Church 271 N. Farnsworth Ave. Aurora, IL 60505 630-898-5422 | Religious Education |
| First Presbyterian Church 325 E. Downer Place Aurora, IL 60605 630-844-0050 8:00 am – 10:30 | Religious Education Children and Youth Ministries |
| First Baptist Church 15 Oak Ave. Aurora, IL 60506 630-897-9310 Sunday services 10:30 9:15 Sunday School | Religious Education Sunday School Youth and Adult ministries |
| Ginger Creek Community Church 2850 Ginger Woods Parkway, Aurora 630-631-0100 www.gingercreek.org Sunday Services 9:00 am, 10:30 am | Religious Education Youth services Youth and adult ministries |
| Living Stone Christian Church 1319 North Lake Street Aurora, IL 60505 Lscconline.com Sunday Worship Services 10:00 am | Religious Education Life Skills Education |

| | |
|--|--|
| Deeper Life Classes 7:00 pm | |
| The Edge Church 1801 N. Eola Road Aurora, IL www.edgeaurora.com 331-684-8732 | Life & Doctrine Education Community Groups Coed Group – Financial Peace University |
| Restoration Church 1460 W. Indian Trail Aurora, IL 708-226-0433 | Youth Ministry Addiction Recovery Services Men and Women |

www.liteleaders.org