

LMarte™



**LM** feel the difference



SCULPT MASTERPIECES

# LMArte™



## AESTHETIC LAYERING SUCCESS

LM-Arte™ is a set of innovative instruments for aesthetic restorations that is designed especially for composite layering. Each instrument is color-coded and named after its main function, enabling you to administer easy, efficient and quick restorative treatments. The lightweight and ergonomic LM™ handle design, together with high-quality tip materials, provides excellent tactile sensitivity and easy handling for the best clinical results.

### COLLABORATION WITH STYLEITALIANO™

LM-Arte™ instrument series has been developed in collaboration with Styleitaliano™, a group of skilled dentists who share our passion for improving dentistry.

The Styleitaliano™ movement emerged from a simple idea of two friends – Walter Devoto and Angelo Putignano. The renowned experts in conservative and esthetic dentistry had noticed that although materials suitable for creating beautiful direct restorations were available, appropriate instruments for employing these successfully were lacking.



Styleitaliano™ is a growing community of skilled dental practitioners who contribute ideas to enhance the simplicity and predictability of everyday dental procedures. Today, it reaches thousands of dentists on social media through illustrative demonstration videos, courses, lectures and conferences. Read more about the Styleitaliano™ philosophy at [www.styleitaliano.org](http://www.styleitaliano.org) and be part of the success!



Follow and join the  
Styleitaliano™ community  
on Facebook and  
Instagram



## LMArte™ Solo - INSTRUMENT DUO FOR SIMPLIFYING YOUR DAILY CASES

**NEW!**

### WHY?

These instruments are ideal for simplifying your daily cases: with just two instruments, you can perform most of your high-end anterior and posterior restorations.

### WHAT?

LM-Arte™ Solo instruments simplify everything from modeling to ergonomics and even hygiene, with fewer instruments needed on the tray. Streamline your restorative instrumentation with this duo that is all you need for your daily anterior and posterior direct composite restoration cases.



Read more on the following pages, and  
visit the LM™ website at [www.lm-dental.com/LM-Arte](http://www.lm-dental.com/LM-Arte)

# COMPREHENSIVE INSTRUMENT RANGE



LM-Arte™ Applicata

**LMErgoSense®** LM 46-49 ES  
**LMErgoMax™** LM 46-49 XSI



LM-Arte™ Applicata Twist

**LMErgoSense®** LM 464-494 ES  
**LMErgoMax™** LM 464-494 XSI



LM-Arte™ Modella

**LMErgoSense®** LM 442-443 ES  
**LMErgoMax™** LM 442-443 XSI



LM-Arte™ Condensa

**LMErgoSense®** LM 488-489 ES  
**LMErgoMax™** LM 488-489 XSI



LM-Arte™ Misura

**LMErgoSense®** LM 496-497 ES  
**LMErgoMax™** LM 496-497 XSI



LM-Arte™ Posterior Misura

**LMErgoSense®** LM 498-499 ES  
**LMErgoMax™** LM 498-499 XSI



LM-Arte™ Cusp Misura

**LMErgoSense®** LM 468-469 ES  
**LMErgoMax™** LM 468-469 XSI



LM-Arte™ Fissura

**LMErgoSense®** LM 481-487 ES  
**LMErgoMax™** LM 481-487 XSI



LM-Arte™ Eccesso

**LMErgoSense®** LM 307-308 ES  
**LMErgoMax™** LM 307-308 XSI



LM-Arte™ Solo Anterior

**LMErgoSense®** LM 431-433 ES  
**LMErgoMax™** LM 431-433 XSI



LM-Arte™ Solo Posterior

**LMErgoSense®** LM 434-438 ES  
**LMErgoMax™** LM 434-438 XSI

## SELECTED INSTRUMENT SETS FOR YOUR UNIQUE RESTORATIONS



### LM-Arte™ Set

Full set of instruments for anterior restorations in LM-Servo™ 5 cassette including

- LM-Arte™ Eccesso
- LM-Arte™ Misura
- LM-Arte™ Fissura
- LM-Arte™ Applicata
- LM-Arte™ Condensa

**LMErgoSense®** LM 6840 ES

**LMErgoMax™** LM 6840 XSI



### LM-Arte™ Posterior Set

Full set of instruments for posterior restorations in LM-Servo™ 5 cassette including

- LM-Arte™ Posterior Misura
- LM-Arte™ Cusp Misura
- LM-Arte™ Fissura
- LM-Arte™ Modella
- LM-Arte™ Condensa

**LMErgoSense®** LM 6844 ES

**LMErgoMax™** LM 6844 XSI



### LM-Arte™ Complete Set

Full set of instruments for any restoration cases in LM-Servo™ 8 cassette including

- LM-Arte™ Eccesso
- LM-Arte™ Misura
- LM-Arte™ Applicata
- LM-Arte™ Posterior Misura
- LM-Arte™ Cusp Misura
- LM-Arte™ Fissura
- LM-Arte™ Modella
- LM-Arte™ Condensa

**LMErgoSense®** LM 6848 ES

**LMErgoMax™** LM 6848 XSI

### Handle options

All LM-Arte™ instruments are available with two ergonomic handle options:



**LMErgoSense®**

The larger diameter and design provide exceptional grip proven to be ergonomic and efficient in scientific clinical testing.

Ø 13.7 mm

The handle is available with an integrated LM DTS™ RFID tag, a unique feature for improved asset management and patient safety. See more at [www.dentaltracking.com](http://www.dentaltracking.com).



**LMErgoMax™**

The classic ergonomic design functions well in all clinical procedures and guarantees excellent tactile sensitivity. Ø 11.5 mm



## ONE INSTRUMENT FOR DIRECT VENEERING LM-Arte™ Solo Anterior

Instrument for high-end esthetic anterior restorations. Rounded and straight spatulas are designed for modeling anterior teeth, especially labial surfaces.

**Sharp tip**  
Precision modeling  
Micromodeling  
Limit marking  
Scratching

**Straight edges**  
Scraping

**Flat profile**  
Flattening  
Uniform

**Thin blade**  
Proximal modeling

**Convex profile**  
One-point modeling  
Create depressions  
Create buccal profile  
Create cervical profile  
Access difficult areas

**Angled edge**  
Definition  
Scraping

**Sharpened edges**  
Cut, split, separate  
Marginal ridges

**Rounded tip**  
Delicate delimitation  
Cervical contouring



## ONE INSTRUMENT FOR POSTERIOURS LM-Arte™ Solo Posterior

Instrument for high-end posterior composite restorations. The plugger end is designed for bulk filling and composite material modeling. The sharp end enables contouring of the occlusal surface anatomy.

**Flat profile**  
Big excess removal  
Medium excess removal

**Angulation**  
Access  
for deep  
cavities

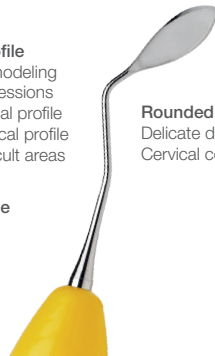
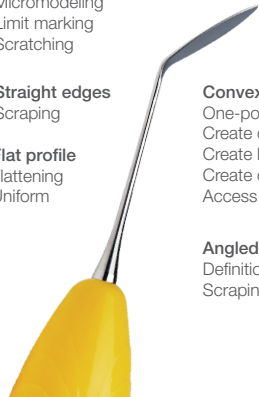
**Flat end**  
Plugger

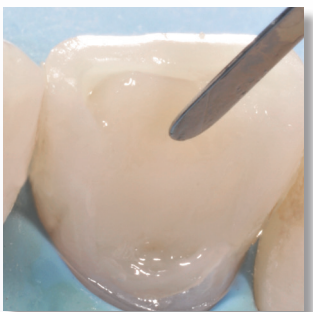
**Semi-rounded edges**  
Slope forming  
Excess removal  
Margin removal

**4-5 mm bulk-fill safety area**  
Probe for bulk-fill materials

**Tapered profile**  
Fine excess removal  
Slope modeling  
Secondary anatomy

**Sharp tip**  
Precision modeling  
Micromodeling  
Limit marking  
Scratching  
Flow distribution  
Bubble elimination

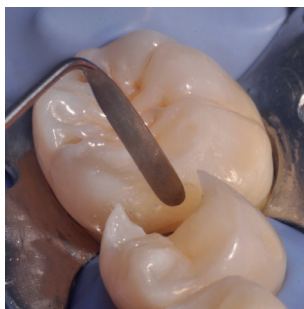




## APPLY ELASTICALLY

### LM-Arte™ Applica

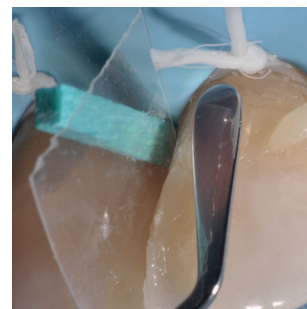
A very thin, flexible spatula designed for transporting and esthetic modeling of the composite. The flexible working end gently and precisely sculpts composite layers to imitate the natural shape of the tooth. The thin tip of the Applica enables modeling in narrow spaces or against the matrix band.



## APPLY WITH A TWIST

### LM-Arte™ Applica Twist

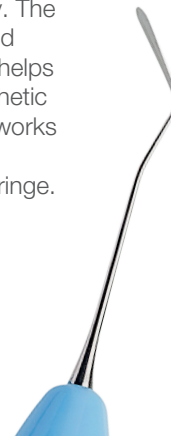
Especially fine, flexible and narrow spatula for composite modeling. The Applica Twist is used for easy modeling in the approximal spaces and marginal ridges in the matrix. Its bent tips make it possible to reach awkward areas without complicating the working position of the hand unnecessarily.



## MODEL FLEXIBLY

### LM-Arte™ Modella

Especially fine, wide spatula for composite modeling. Particularly suited to large tooth surfaces such as the buccal surfaces of the incisors. The wide spatula end flattens the composite effectively. The flexibility, delicacy and sharpness of the tip helps to create precise esthetic details. The spatula works well for applying the composite from a syringe.

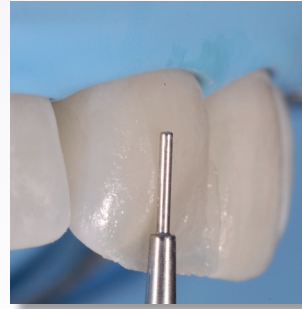




## PUSH SOFTLY

### LM-Arte™ Condensa

A long, round plugger designed especially for modeling a composite. Its angulated shanks enable unrestricted access to all cavities. Condensa has both a thick and a thin tip that can be used in cavities of different sizes, in both anterior and posterior areas. The rounded working end enables a delicate compacting of composite without any risk of adhesion.



## APPLY EVENLY

### LM-Arte™ Misura

A unique instrument used to apply the correct horizontal and vertical thicknesses of composite layers on the anterior restorations. After layering but before polymerization of the dentine composite, the thinner, cylindrical tip is placed on the natural tooth

enamel. The unpolymerized composite below the cylindrical tip is then gently modelled, leaving an optimal space for the enamel composite layer. The thicker, short tip of the Misura is placed horizontally at the margin of the prepared cavity, leaving the edge of the tip on the original enamel. This allows you to determine the right amount of transparent composite to apply on the finishing line. The final esthetic restoration consists of correctly balanced opaque and translucent composites, avoiding the unpleasant gray effect of some composites.







## FILL EVENLY

### LM-Arte™ Posterior Misura

Posterior version of the popular Misura instrument. Designed for providing the required vertical thickness of composite layers on posterior restorations. The forked tip of the instrument allows modeling of the proximal wall to match the height and anatomy of the neighboring tooth with the presence of a matrix.



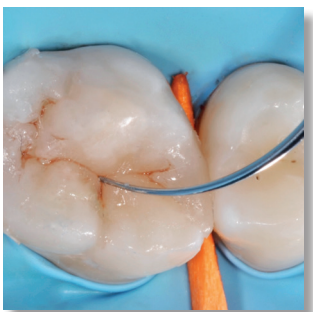
## EVALUATE EXPLICITLY

### LM-Arte™ Cusp Misura

Unique instrument for estimating cusp thickness and height for evaluating the need for cusp preparation when performing adhesive restorations. Ideal for evaluating the strength of the natural tooth structure and choosing the restorative technique to be used. If the forked instrument tip penetrates up to its marks, the tooth structure is too weak to withstand occlusal forces with a direct restoration, and other clinical options must be considered.



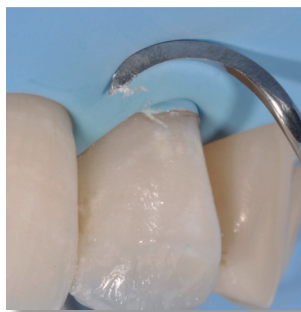
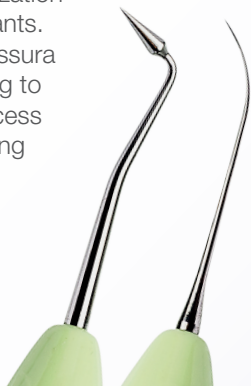
NEW!



## SCULP DELICATELY

### LM-Arte™ Fissura

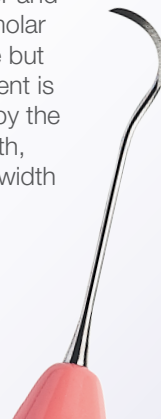
A modeling instrument with extremely sharp pointed tips. The conical tip is perfect for sculpting the anatomy of the occlusal area of the posterior teeth with just one instrument. The fine, probe-shaped tip is optimal for modeling fissures and mamelons as well as for layering characterization composites and sealants. The flexibility of the Fissura enables gentle probing to ensure there is no excess bonding resin remaining on tooth surfaces.



## FINISH NEATLY

### LM-Arte™ Eccesso

An instrument designed for the removal of composite and bonding residue. The special angulated working ends of the Eccesso are ideal for the removal of excess from cervical anterior and interproximal molar areas. This fine but robust instrument is characterized by the optimized length, thickness and width of its blade.



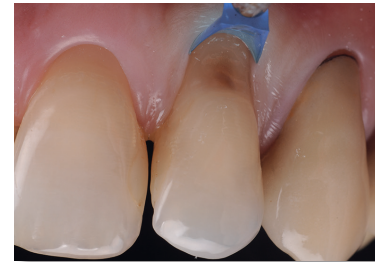
Visit Styleitaliano™ website at [www.styleitaliano.org](http://www.styleitaliano.org) for restorative clinical cases with LM™ instruments



# OVERCOME THE GINGIVAL RETRACTING CHALLENGE - LMGengiva™

The aim in restorative treatment of a cervical lesion is to achieve perfect margin sealing, a strong bond and optimal polishing of the composite material. Mechanical gingival retraction in cervical restorations can be traumatic if improperly performed.

The LM-Gengiva™ instrument with gingival retractors is used to avoid injuring the gingiva unnecessarily and obtain the best clinical result. With this method, the desired end result is achieved: the soft tissue is not harmed and the esthetic requirements are met.



## GINGIVAL RETRACTORS

- Retract the gingiva from the restoration
- Hardness of the plastic tip allows for a strong retraction
- The plastic tips allow a certain flexibility for more adaptation while pressing
- The tip acts as a tight seal between the gingiva and tooth
- Protects the gingiva and reduces the likelihood of debonding failure
- The bonding interface and the gingival margin can be seen clearly; ideal contrast with soft tissues
- Can be customized with a drill to fit a convex or concave root detect
- No bonding of the adhesive materials to the tip surface
- No interference with polymerization
- Disposable



### LM-Gengiva™ gingival retracting kit

**LMErgoSense®** LM 7556K ES

**LMErgoMax™** LM 7556K XSI



Incl. LM-Gengiva™ hand instrument, blue gingival retractors (assortment of around 90 pcs, 30 pcs/size) and LM-MultiLever™ for the removal of plastic working ends.

# LM Dental™

 LM-Instruments Oy

Norrbyn rantatie 8 | FI-21600 Parainen | Finland

Tel. +358 2 4546 400

info@lm-dental.com | www.lm-dental.com

